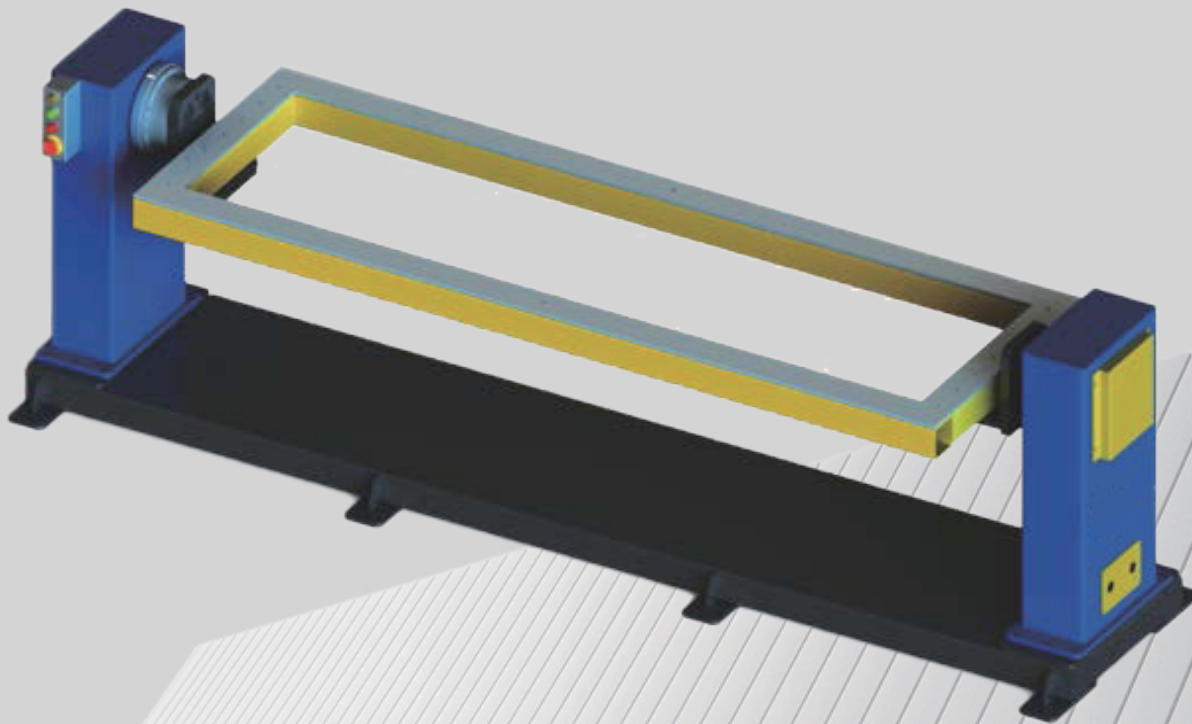


Moka positioners catalog



POSITIONERS

Single Axis Turning Frame



Model	MKA-D1-250A	MKA-D1-500A	MKA-D1-1000A	MKA-D2-250A	MKA-D2-500A	MKA-D2-1000A	MKA-D2-2000A
Payload (kg)	250	500	1000	250	500	1000	2000
Base plate to center of the spindle (mm)	700	700	700	700	700	700	700
Positioner frame size (mm)	1800×800	1800×800	1800×800	2500×800	2500×800	2500×800	2500×800
Rotation speed (°/s)	60	60	40	60	60	40	40
Repeat positioning accuracy (arcmin)	±1.0	±1.0	±1.2	±1.0	±1.0	±1.2	±1.2
Rotation angle (°)	±180	±180	±180	±180	±180	±180	±180
Eccentricity (mm)	≤150	≤150	≤100	≤150	≤150	≤100	≤100
Center of gravity distance (mm)	≤300	≤300	≤200	≤300	≤300	≤200	≤200

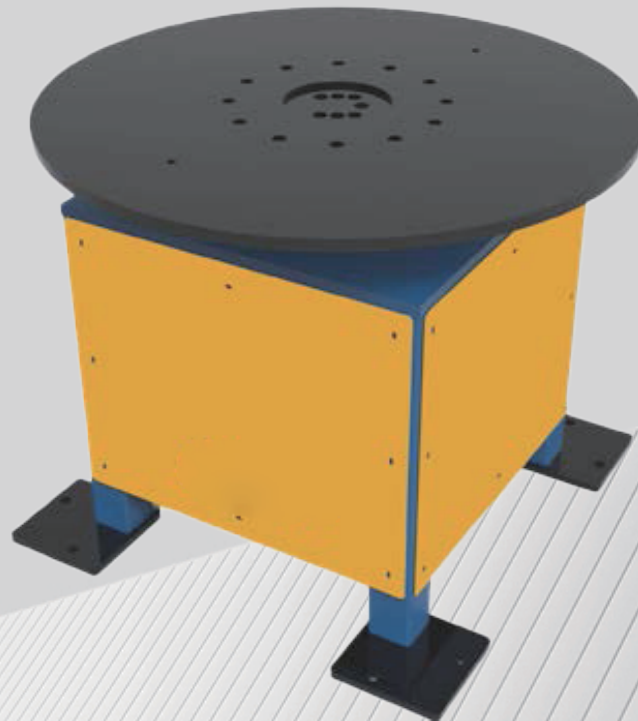


ATTENTION

Please read the user manual and relevant documentations before use.

Contact official staff or distributor of MOKA if there are any errors, faults or if the positioner is a harm to human safety.

All data, drawings and specifications provided in this catalog are purely for information purposes and do not constitute a guarantee of these characteristics. The extent of goods delivered and services performed is determined by the subject matter of the specific contract. No liability accepted for errors or omissions.



Model	MKA-D3-200A	MKA-D3-500A	MKA-D3-1000A
Payload (kg)	200	500	1000
Disc Diameter (mm)	350	500	800
Rotation speed (°/s)	60	60	40
Repeat positioning accuracy (arcmin)	±1.0	±1.0	±1.0
Rotation angle (°)	±360	±360	±360
Eccentricity (mm)	≤200	≤250	≤300
Center of gravity distance (mm)	≤200	≤250	≤300



ATTENTION

Please read the user manual and relevant documentations before use.

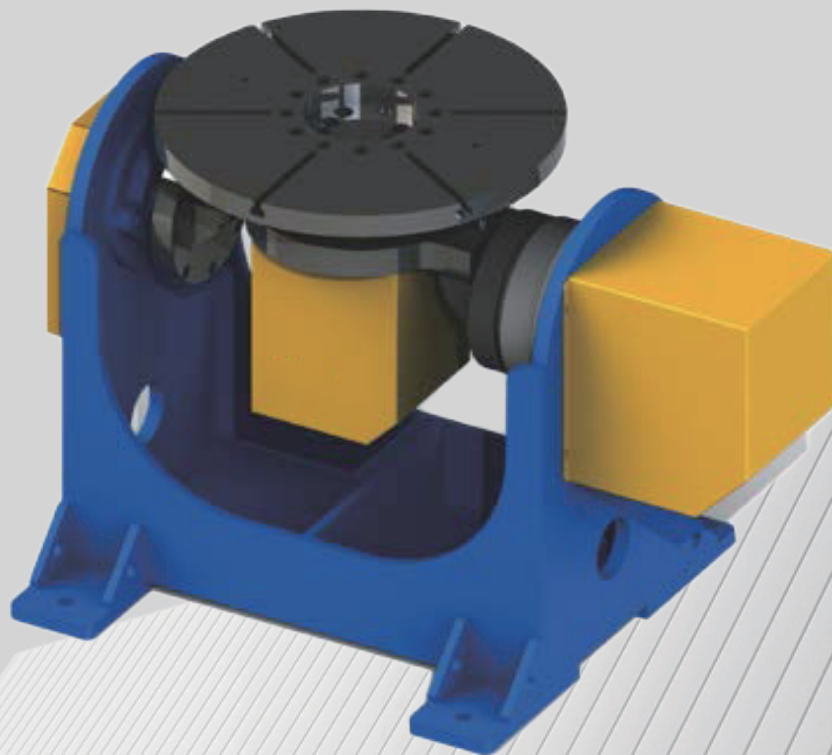
Contact official staff or distributor of MOKA if there are any errors, faults or if the positioner is a harm to human safety.

All data, drawings and specifications provided in this catalog are purely for information purposes and do not constitute a guarantee of these characteristics. The extent of goods delivered and services performed is determined by the subject matter of the specific contract. No liability accepted for errors or omissions.



POSITIONERS

Double-axis P-type Positioner



Model	MKA-S1-200A	MKA-S1-300A	MKA-S1-500A	MKA-S1-1000A
Payload (kg)	200	300	500	1000
Disc Diameter (mm)	400	500	600	600
Rotation speed (°/s)	Axis 1: 80 /Axis 2: 80	Axis 1: 60 /Axis 2: 80	Axis 1: 50 /Axis 2: 50	Axis 1: 50 /Axis 2: 50
Repeat positioning accuracy (arcmin)	±1.0	±1.0	±1.5	±1.5
Rotation angle (°)	Axis 1: ±90 /Axis 2: ±360	Axis 1: ±90 /Axis 2: ±360	Axis 1: ±90 /Axis 2: ±360	Axis 1: ±90 /Axis 2: ±360
Eccentricity (mm)	≤120	≤100	≤100	≤100
Center of gravity distance (mm)	≤120	≤100	≤100	≤100

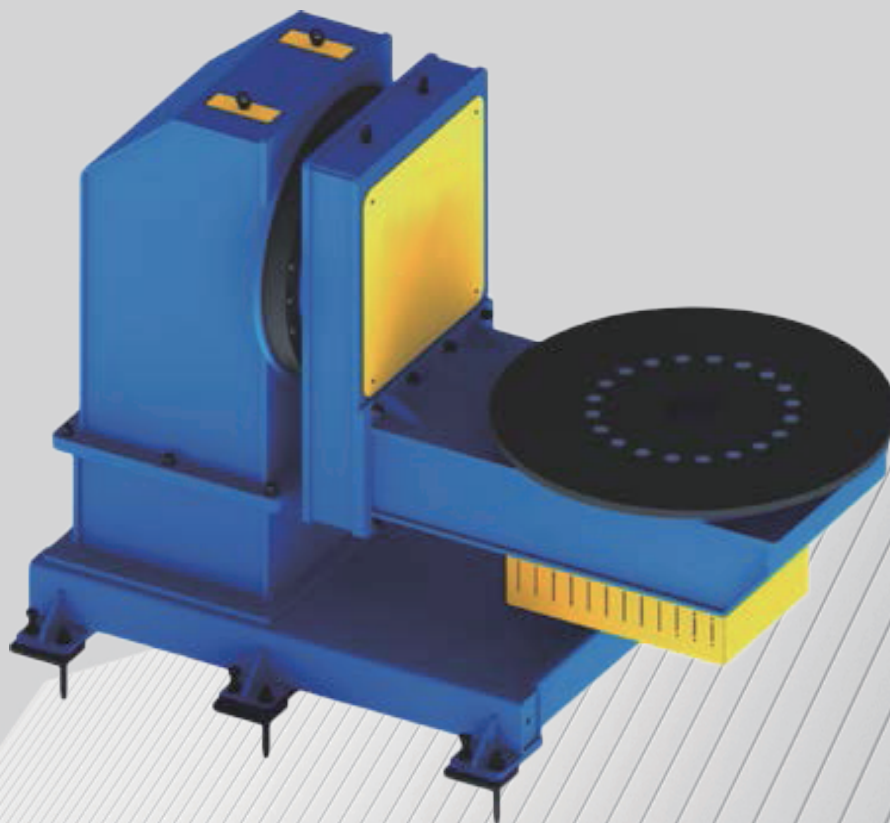


ATTENTION

Please read the user manual and relevant documentations before use.

Contact official staff or distributor of MOKA if there are any errors, faults or if the positioner is a harm to human safety.

All data, drawings and specifications provided in this catalog are purely for information purposes and do not constitute a guarantee of these characteristics. The extent of goods delivered and services performed is determined by the subject matter of the specific contract. No liability accepted for errors or omissions.



Model	MKA-SL2-500A	MKA-SL2-1000A	MKA-SL2-2000A
Payload (kg)	500	1000	2000
Disc Diameter (mm)	400	500	600
Rotation speed (°/s)	Axis 1: 50 /Axis 2: 70	Axis 1: 50 /Axis 2: 70	Axis 1: 20 /Axis 2: 20
Repeat positioning accuracy (arcmin)	±1.5	±1.5	±1.5
Rotation angle (°)	Axis 1: ±175 /Axis 2: ±360	Axis 1: ±175 /Axis 2: ±360	Axis 1: ±175 /Axis 2: ±360
Eccentricity (mm)	≤250	≤200	≤150
Center of gravity distance (mm)	≤500	≤400	≤300

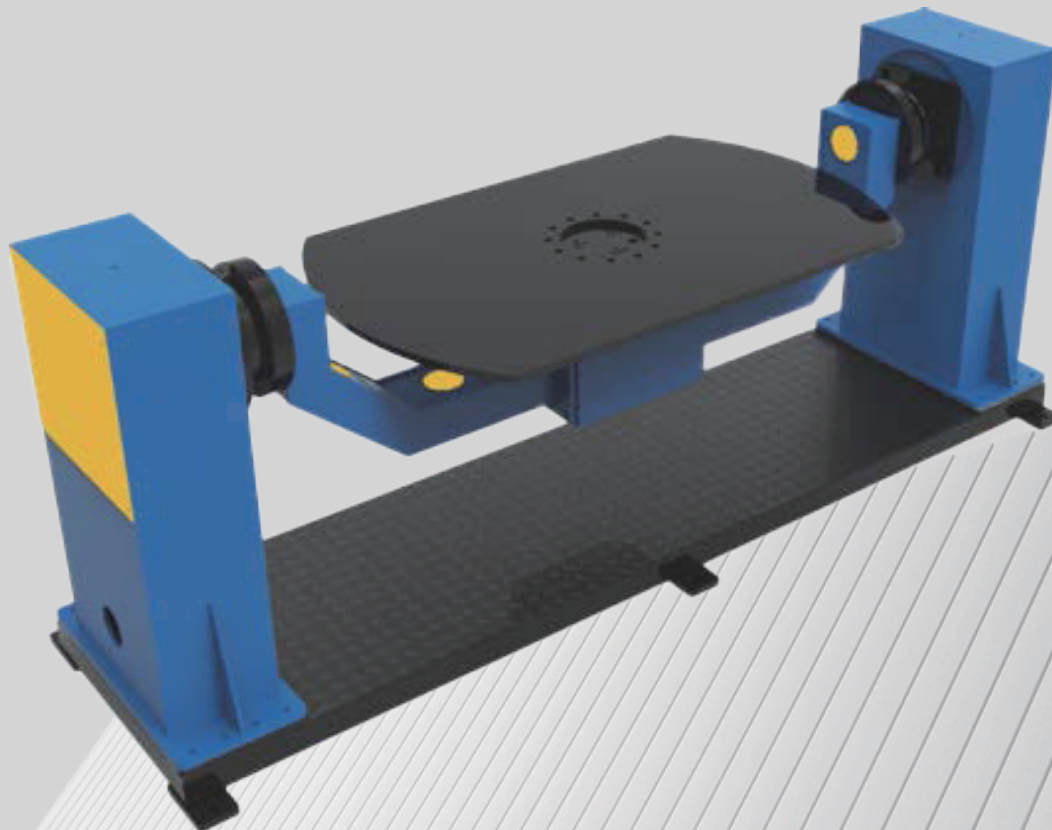


ATTENTION

Please read the user manual and relevant documentations before use.

Contact official staff or distributor of MOKA if there are any errors, faults or if the positioner is a harm to human safety.

All data, drawings and specifications provided in this catalog are purely for information purposes and do not constitute a guarantee of these characteristics. The extent of goods delivered and services performed is determined by the subject matter of the specific contract. No liability accepted for errors or omissions.



Model	MKA-SC3-200A	MKA-SC3-500A	MKA-SC3-1000A
Payload (kg)	200	500	1000
Disc Diameter (mm)	450	500	650
Rotation speed (°/s)	Axis 1: 60 /Axis 2: 75	Axis 1: 60 /Axis 2: 75	Axis 1: 20 /Axis 2: 75
Repeat positioning accuracy (arcmin)	±1.0	±1.0	±1.5
Rotation angle (°)	Axis 1: ±175 /Axis 2: ±360	Axis 1: ±175 /Axis 2: ±360	Axis 1: ±175 /Axis 2: ±360
Eccentricity (mm)	≤100	≤100	≤100
Center of gravity distance (mm)	≤200	≤200	≤200

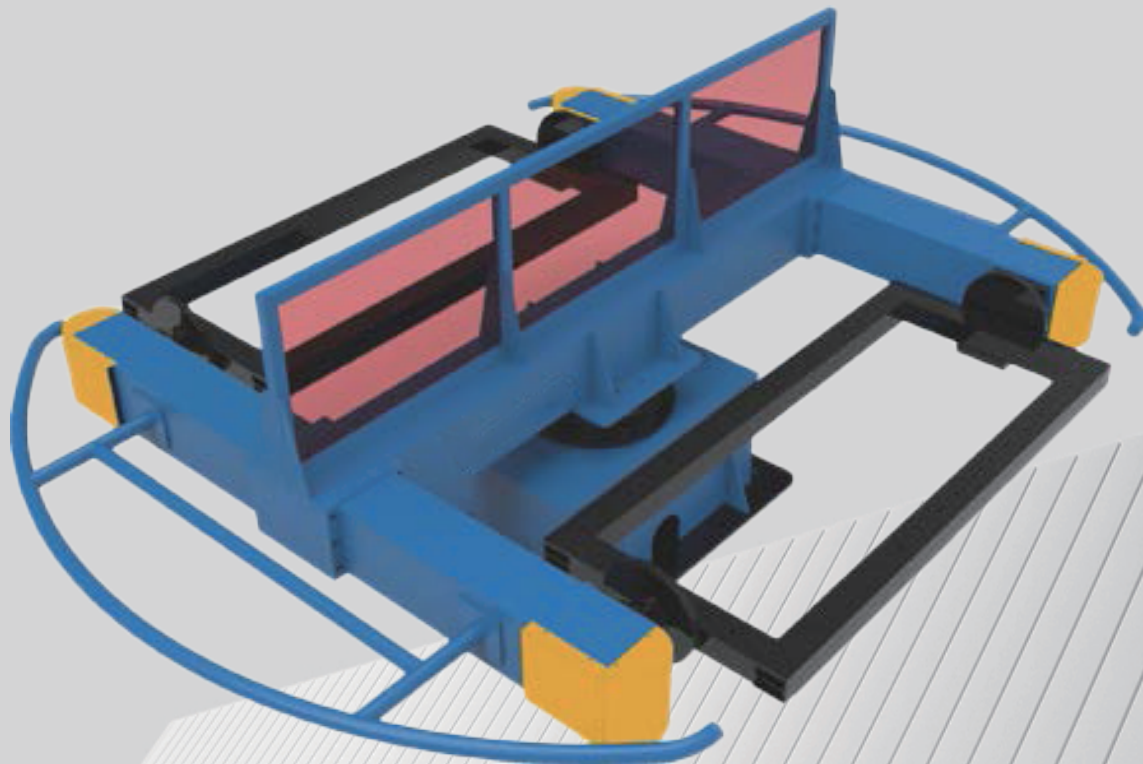


ATTENTION

Please read the user manual and relevant documentations before use.

Contact official staff or distributor of MOKA if there are any errors, faults or if the positioner is a harm to human safety.

All data, drawings and specifications provided in this catalog are purely for information purposes and do not constitute a guarantee of these characteristics. The extent of goods delivered and services performed is determined by the subject matter of the specific contract. No liability accepted for errors or omissions.



Model	MKA-SP1-500A	MKA-SP1-1000A
Payload (kg)	500	1000
Radius of gyration (mm)	650	650
Axis 1 rotation angle (°)	±180	±180
Axis 2 rotation angle (°)	±360	±360
Axis 3 rotation angle (°)	±360	±360
Axis 1 rotation speed (° / S)	30	30
Axis 2 rotation speed (° / S)	60	60
Axis 3 Rotation Speed (° / S)	60	60
Repeat positioning accuracy (arcmin)	±1.5	±1.5
Eccentricity (mm)	≤150	≤150
Center of gravity distance (mm)	≤300	≤300

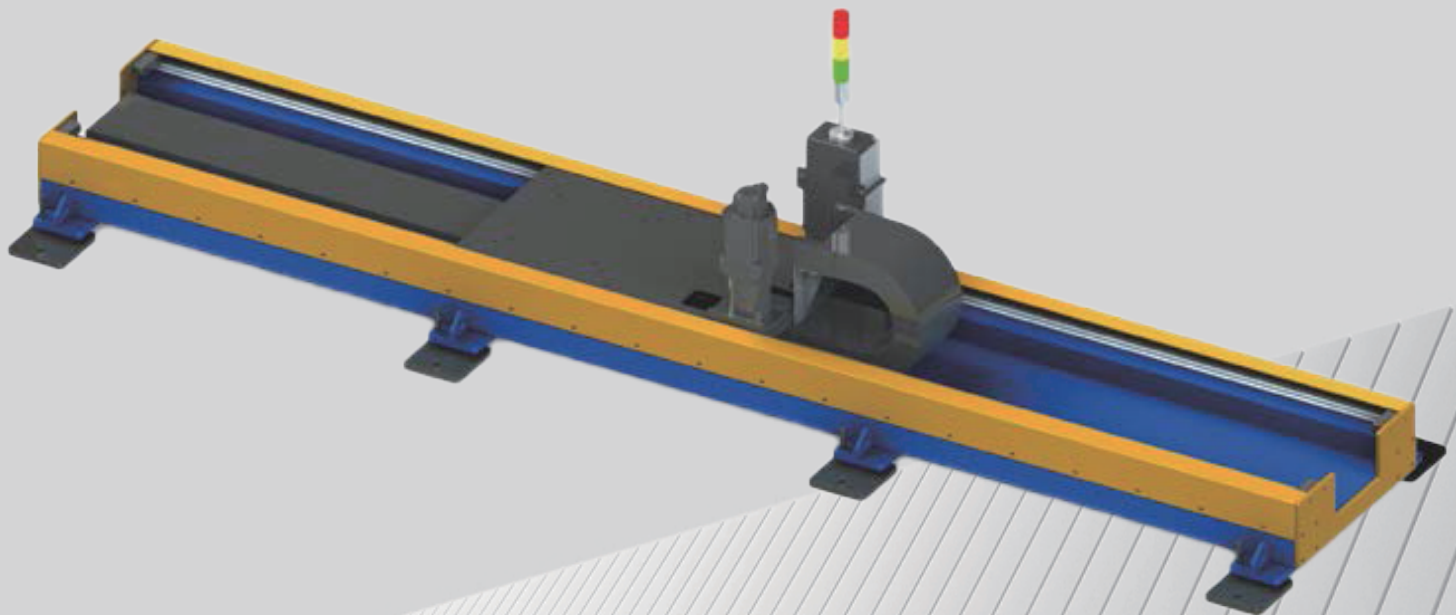


ATTENTION

Please read the user manual and relevant documentations before use.

Contact official staff or distributor of MOKA if there are any errors, faults or if the positioner is a harm to human safety.

All data, drawings and specifications provided in this catalog are purely for information purposes and do not constitute a guarantee of these characteristics. The extent of goods delivered and services performed is determined by the subject matter of the specific contract. No liability accepted for errors or omissions.



Model	MKA-DZX1-3000-500A	MKA-DZX1-4000-500A	MKA-DZX1-5000-500A	MKA-DZX1-6000-500A
Payload (kg)	500	500	500	500
Ground rail total length (mm)	3000	4000	5000	6000
Effective stroke (mm)	2300	3300	4300	5300
Maximum walking speed (M/min)	15	15	15	15
Repeat positioning accuracy (mm)	±0.05	±0.05	±0.08	±0.08

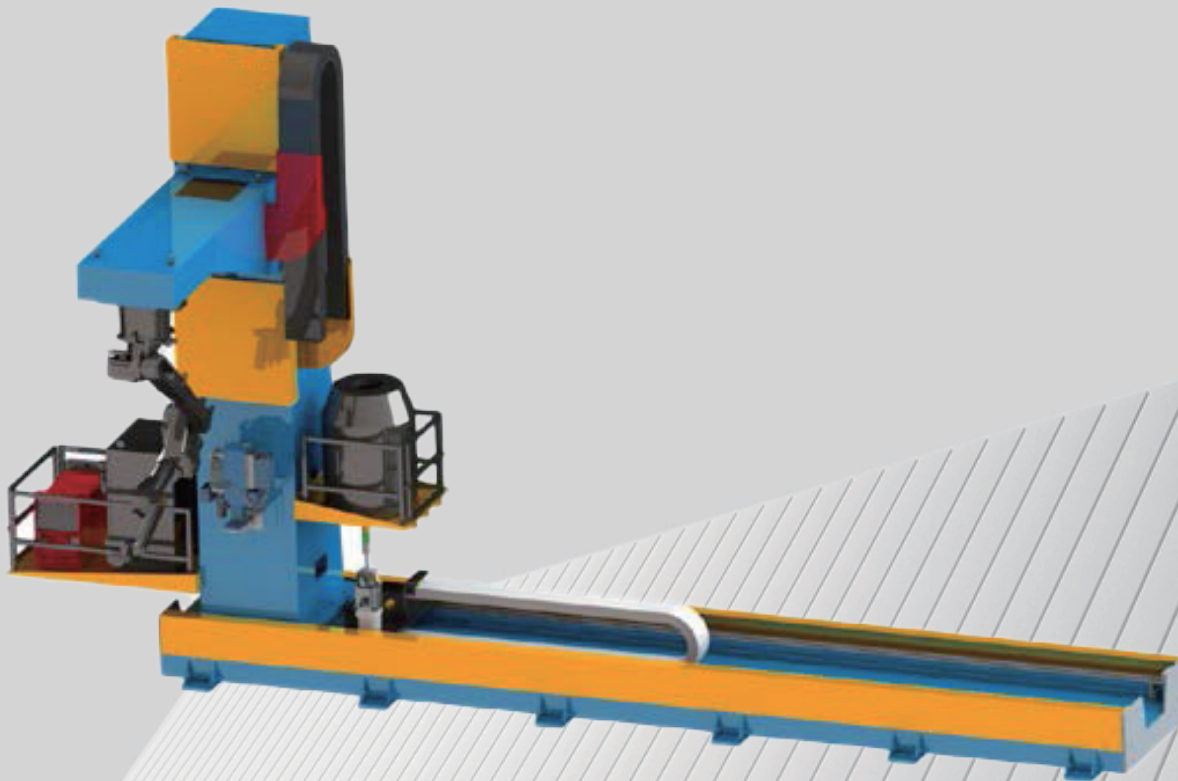


ATTENTION

Please read the user manual and relevant documentations before use.

Contact official staff or distributor of MOKA if there are any errors, faults or if the positioner is a harm to human safety.

All data, drawings and specifications provided in this catalog are purely for information purposes and do not constitute a guarantee of these characteristics. The extent of goods delivered and services performed is determined by the subject matter of the specific contract. No liability accepted for errors or omissions.



Model	MKA-XZXB-3000	MKA-XZXB-4000	MKA-XZXB-5000
Payload (kg)	4000	4000	4000
Ground rail total length (mm)	4000	5000	6000
Effective stroke (mm)	3000	4000	5000
Z-axis travel (mm)	1000~2000	1000~2000	1000~2000
Maximum walking speed (M/min)	12	12	12
Repeat positioning accuracy (mm)	±0.08	±0.08	±0.08

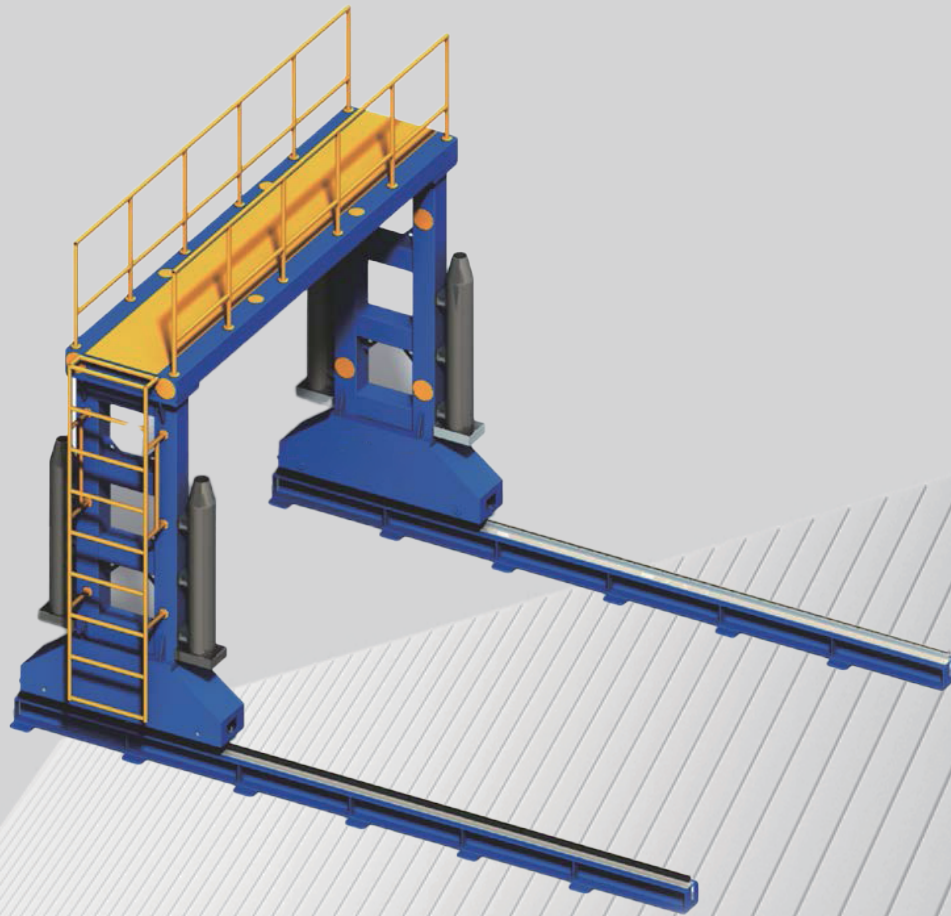


ATTENTION

Please read the user manual and relevant documentations before use.

Contact official staff or distributor of MOKA if there are any errors, faults or if the positioner is a harm to human safety.

All data, drawings and specifications provided in this catalog are purely for information purposes and do not constitute a guarantee of these characteristics. The extent of goods delivered and services performed is determined by the subject matter of the specific contract. No liability accepted for errors or omissions.



Model	MKA-LMXZ-4000-X	MKA-LMXZ-5000-X
Payload (kg)	1000	1000
Gantry span (mm)	4000	5000
Effective stroke (mm)	Customized	Customized
Walking speed (M/min)	8	8
Repeat positioning accuracy (mm)	±0.08	±0.08

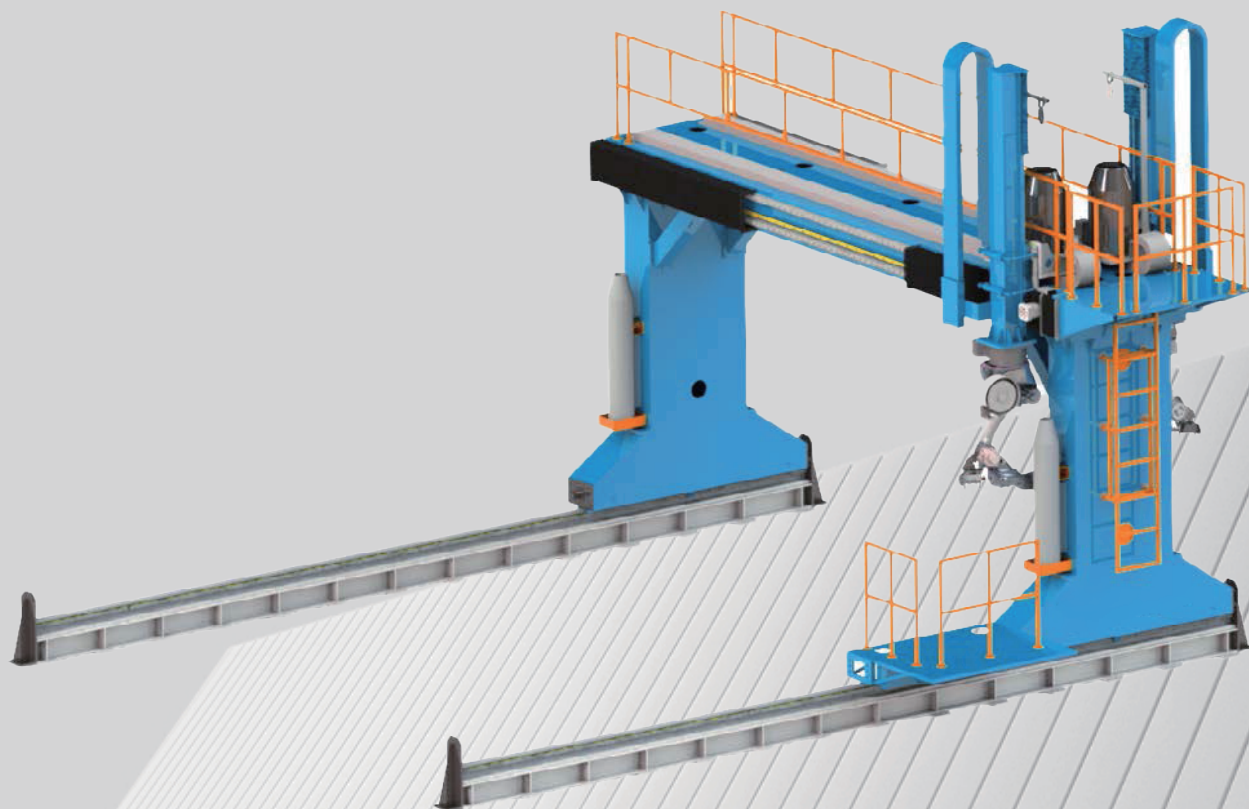


ATTENTION

Please read the user manual and relevant documentations before use.

Contact official staff or distributor of MOKA if there are any errors, faults or if the positioner is a harm to human safety.

All data, drawings and specifications provided in this catalog are purely for information purposes and do not constitute a guarantee of these characteristics. The extent of goods delivered and services performed is determined by the subject matter of the specific contract. No liability accepted for errors or omissions.



Model	MKA-LMXYZ-5000	MKA-LMXYZ-6000	MKA-LMXYZ-7000
Payload (kg)	1000	1000	1000
Gantry span (mm)	5000	6000	7000
Z-axis travel (mm)	1000~2000	1000~2000	1000~2000
Effective stroke (mm)	Customizable	Customizable	Customizable
Walking speed (M/min)	8	8	8
Repeat positioning accuracy (mm)	±0.08	±0.08	±0.08



ATTENTION

Please read the user manual and relevant documentations before use.

Contact official staff or distributor of MOKA if there are any errors, faults or if the positioner is a harm to human safety.

All data, drawings and specifications provided in this catalog are purely for information purposes and do not constitute a guarantee of these characteristics. The extent of goods delivered and services performed is determined by the subject matter of the specific contract. No liability accepted for errors or omissions.



Committed to providing customers with
the most valuable products

WUHU MOKA ROBOT TECHNOLOGY CO., LTD

ADD: NO.19 WEISI ROAD, JIUJIANG DISTRICT, WUHU, ANHUI, CHINA

PHONE: +86-18262626857

WHATSAPP: +86-18262626857

EMAIL: thomas@mokarobot.com

WEBSITE: www.mokarobot.com