



Supplemental Streetscaping and Park Plans for Bennet, Nebraska

MC RATERMAN

for Pr. Kim Todd, HORT 896 *Parks Planning Studio*
and Dr. Zhenghong Tang, CRPL 990 *Planning Studio*



CONTENTS

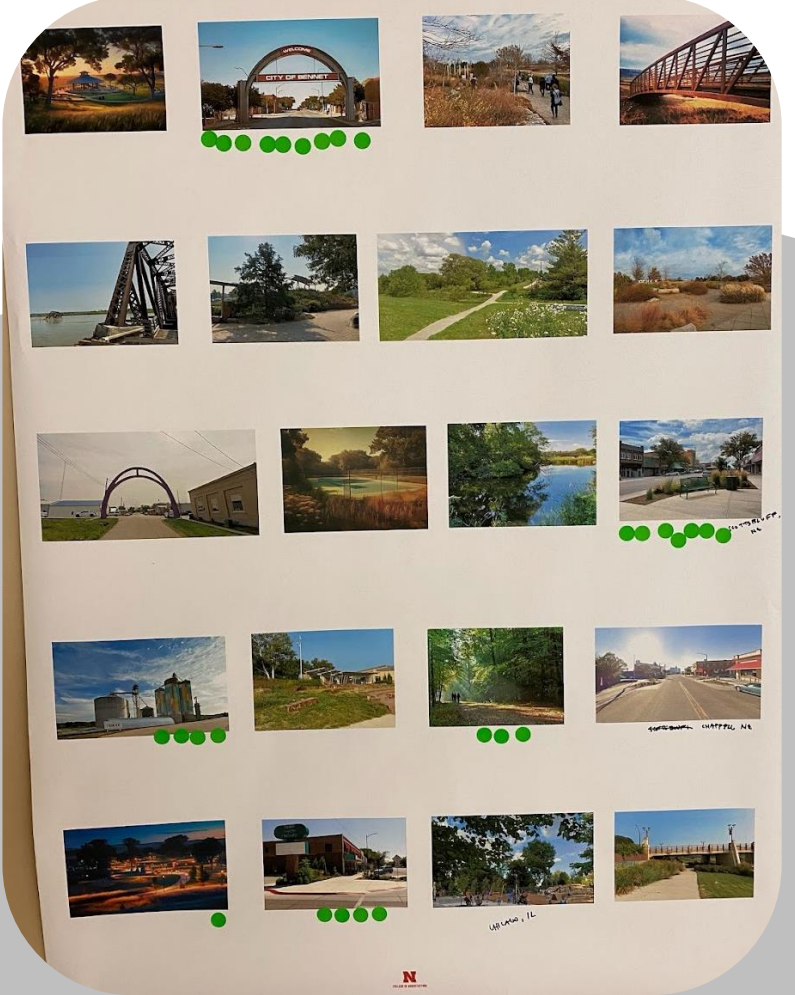
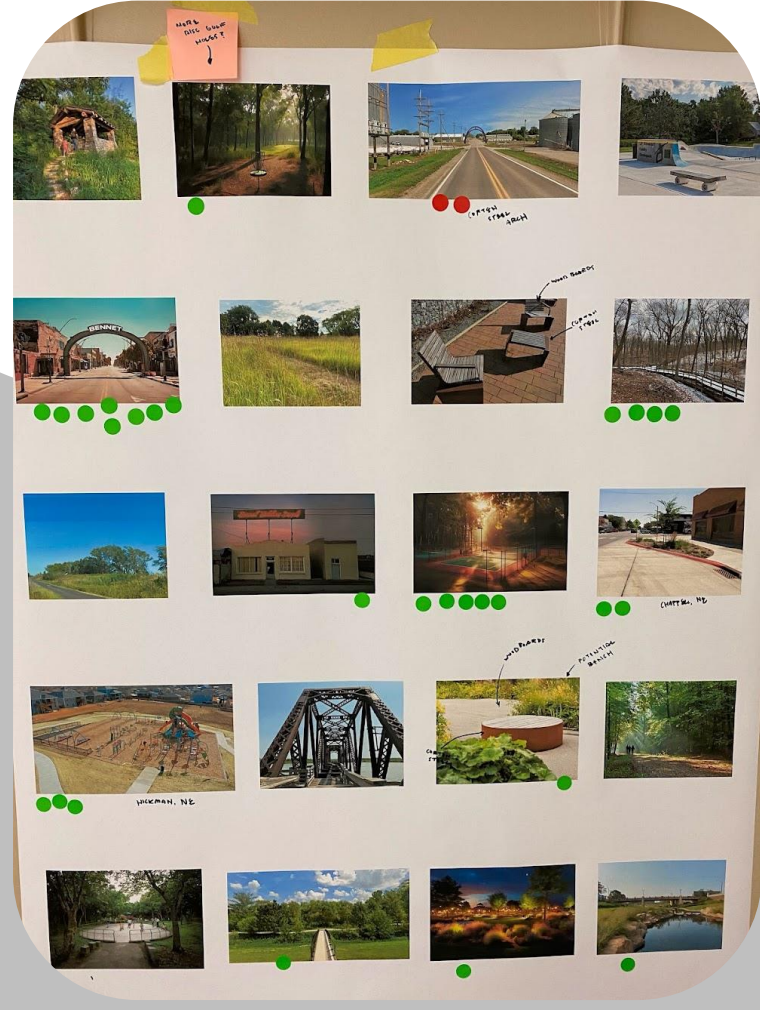
Streetscaping
4

Cottonwood Park
11

Bennet Park
20

Whispering Pines Park
25

Bennet Community Plaza
29





Streetscaping




Materials

“The designers recommend the use of Corten steel in conjunction with wood boards to construct or otherwise source streetscape amenities and furniture. The use and combination of these materials was initially inspired by Bennet’s resident welding shops and wood-working shops. These material choices not only complement an industrial look—through the steel’s naturally occurring rust-colored patina—but also serve as an appropriate transition into the naturalistic look that the recommended native plant materials will hold. Outdoor furniture, by virtue of the utilization of these materials, will be durable and straight-forward to maintain.”

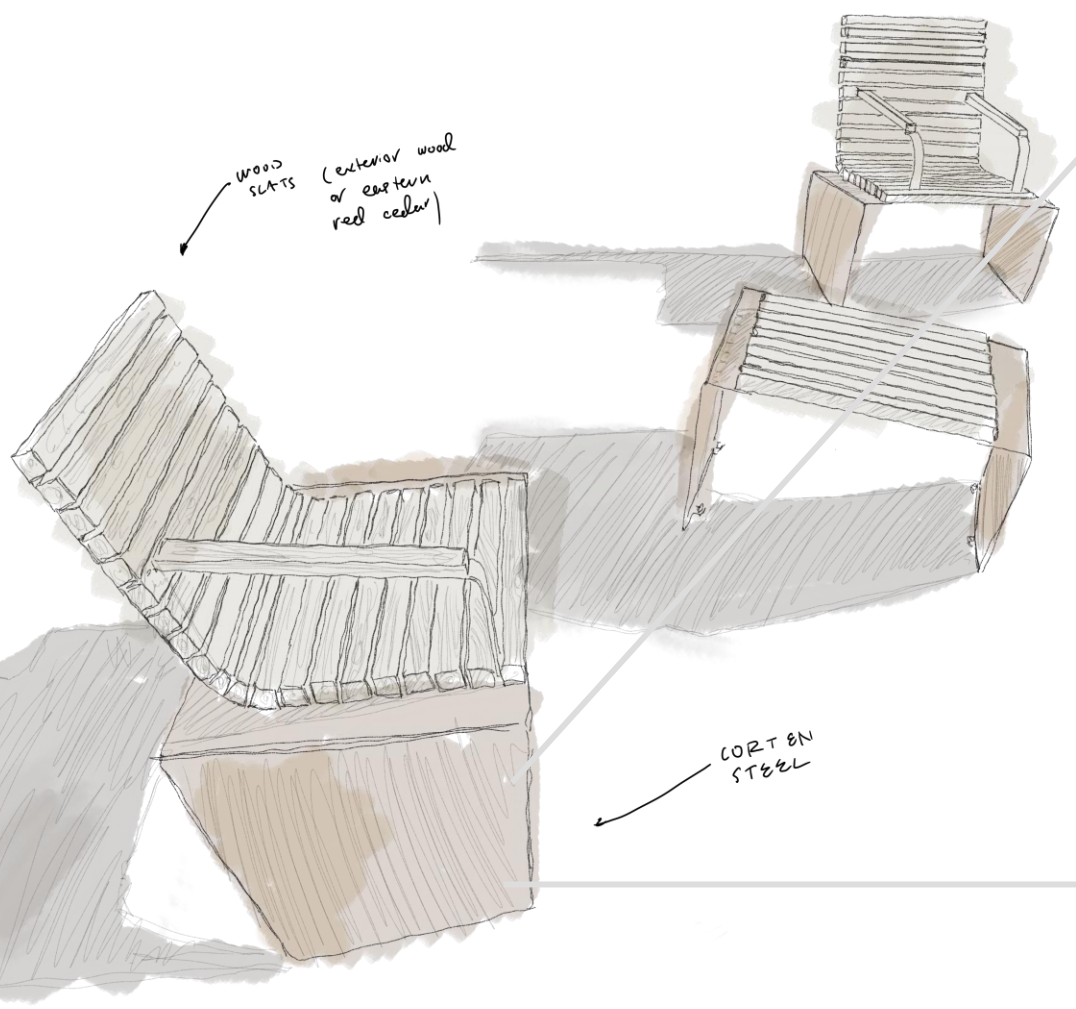
From the *Bennet, NE Downtown Economic Development Plan* adopted 2023, section written by author





“A good city is like a good party—people stay longer than really necessary, because they are enjoying themselves.”

JAN GEHL

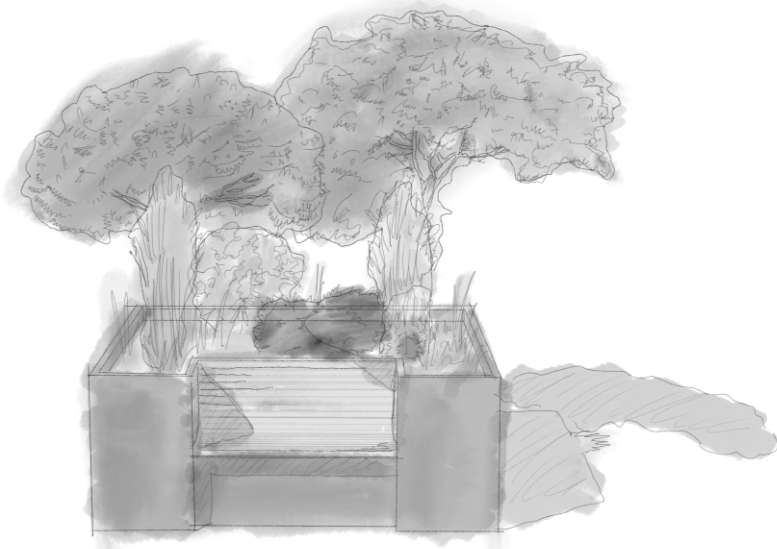


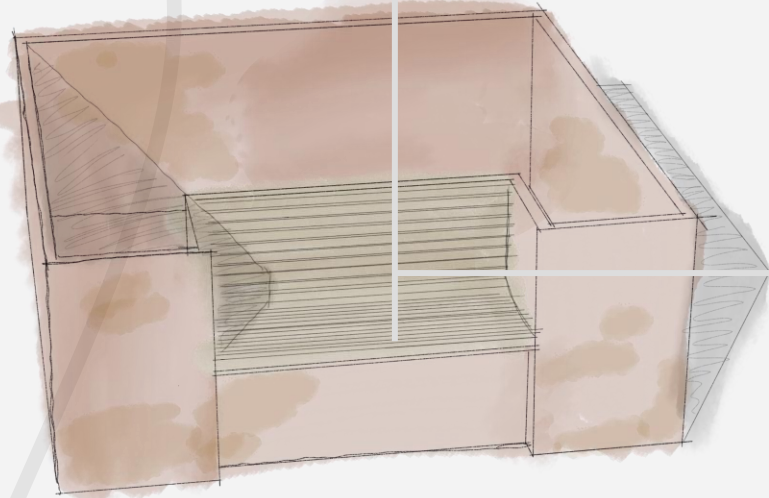
based on digital photograph, sketch by author



introduction

Seating and landscaping elements can be combined in order to create even more interesting streetscaping; this combination provides particular benefits for those engaging with the installations directly and coming into close contact with selected plant materials.





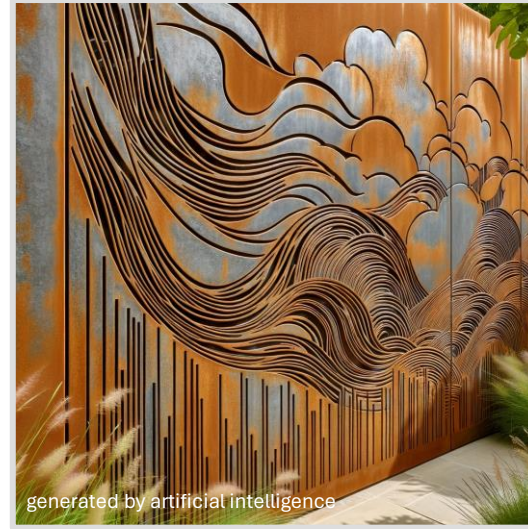
based on three-dimensional model by author, sketches by author



digital photograph, digitally manipulated by author



digital photograph



generated by artificial intelligence



digital photograph, digitally manipulated by author



generated by artificial intelligence



digital photograph



digital photograph



Cottonwood Park

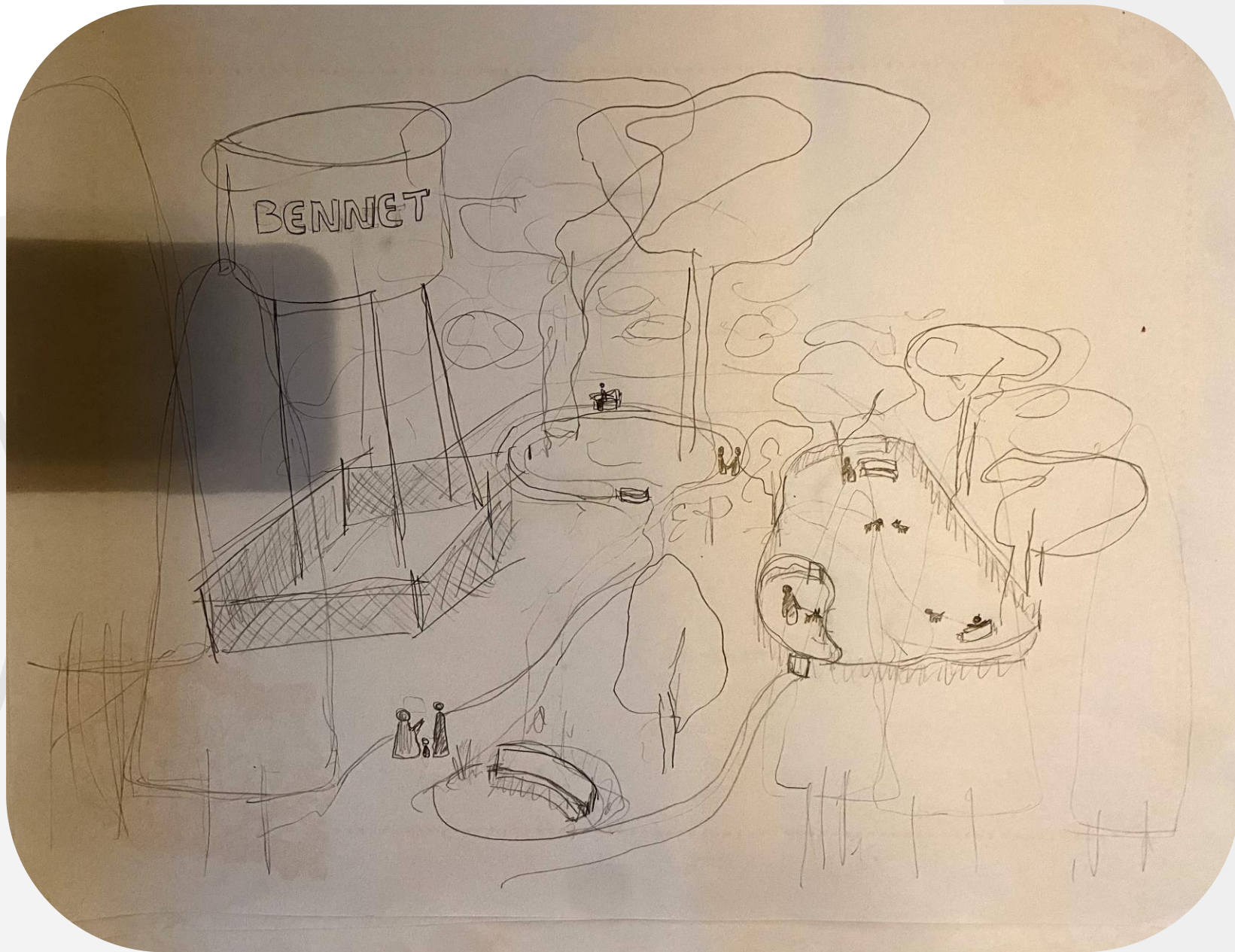


Cottonwood Park Plan Overview

The vision for the yet-to-be-constructed Cottonwood Park is to serve as a dense and vibrant park space defined by a feeling of being ‘wrapped up’ by landscaping and social activity. The park is envisioned as having an energetic core encapsulated by a substantial amount of foliage, and therefore feeling like a ‘pod’.

Primary aims for Cottonwood Park:

- To serve as a park for the ‘in-between’ ages not typically served by traditional parks
 - Play and socialization opportunities are aimed at middle and high-school aged youth
 - Offer reunion opportunities for young adults living between school and their childhood home
- To serve as a dog park for the immediate community of Bennet
 - Give teenagers and young adults the ability to socialize with their peers and older adults in a relaxed environment
 - Give dog-owners the ability to meet other locals with similar interests
- To serve as a ‘multipurpose’ and ‘overflow’ site for the adjacent Bennet Elementary



early concept art,
sketch

Kentucky Coffee Tree
Gymnocladus dioica

Bur Oak
Quercus macrocarpa

Eastern Cottonwood
Populus deltoides

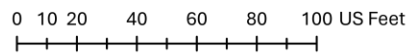
Kentucky Coffee Tree
Gymnocladus dioica

Honey Locust
Gleditsia triacanthos

Honey Locust
Gleditsia triacanthos

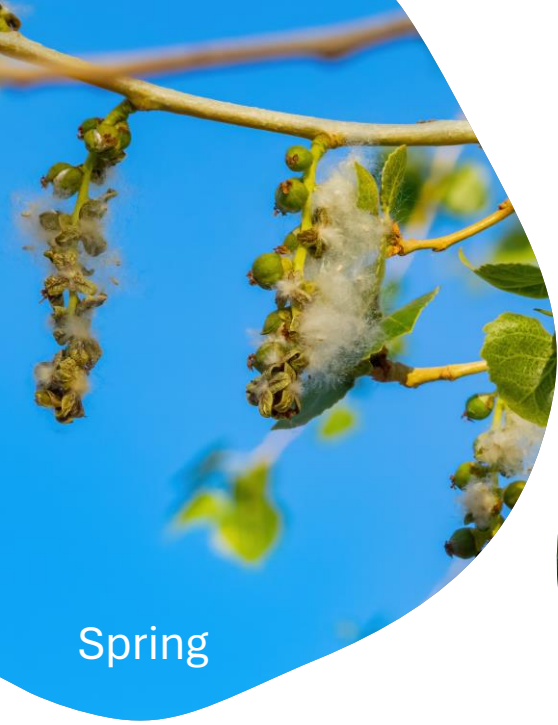
Eastern Red Cedar
Juniperus virginiana

Eastern Red Cedar
Juniperus virginiana



Cottonwood Park, Proposed Overstory Tree Plantings





Spring



Summer

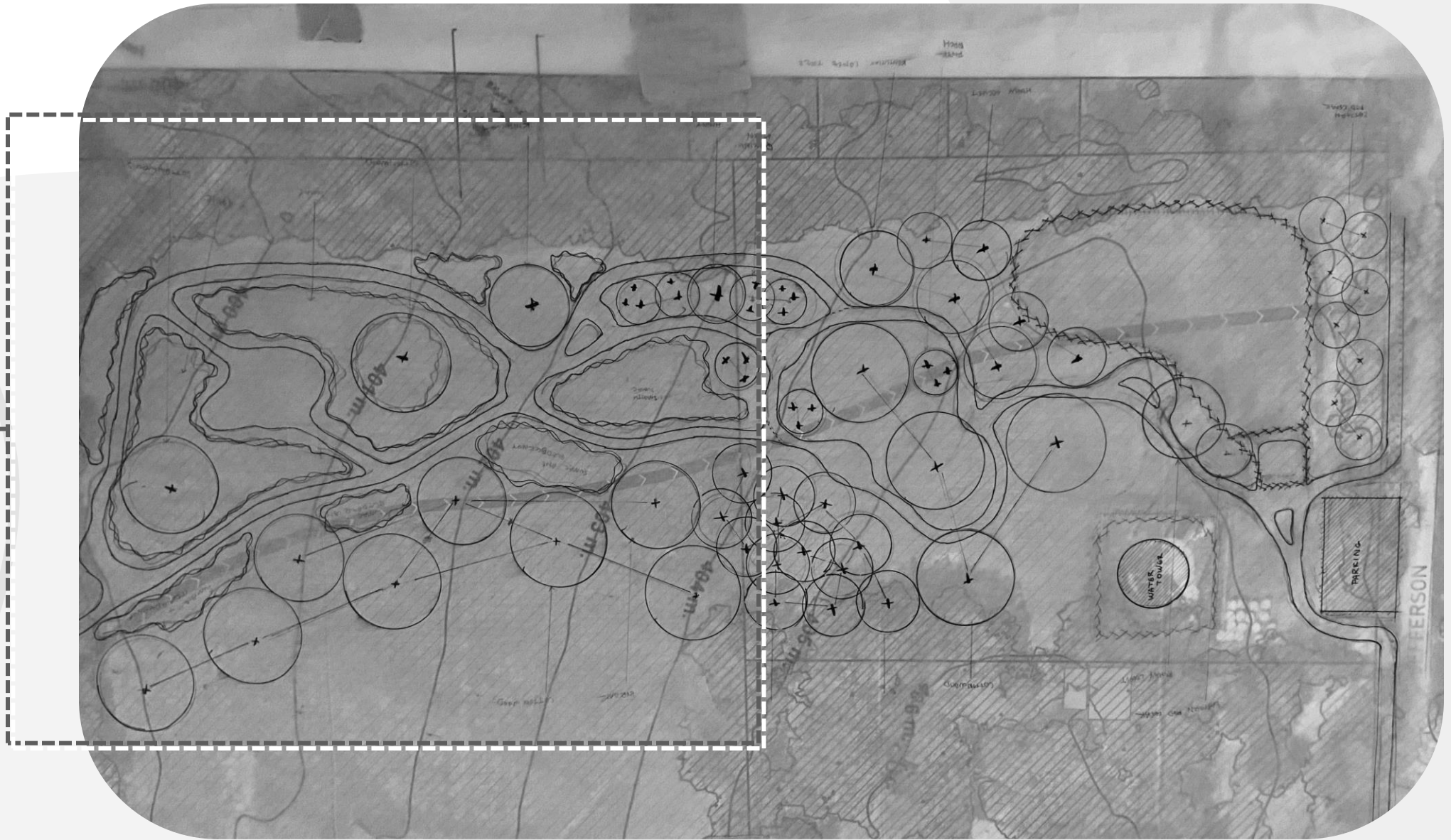


Autumn

Eastern Cottonwood

Populus deltoides

potential additional
park area, acquired
through donation





Summer



Winter

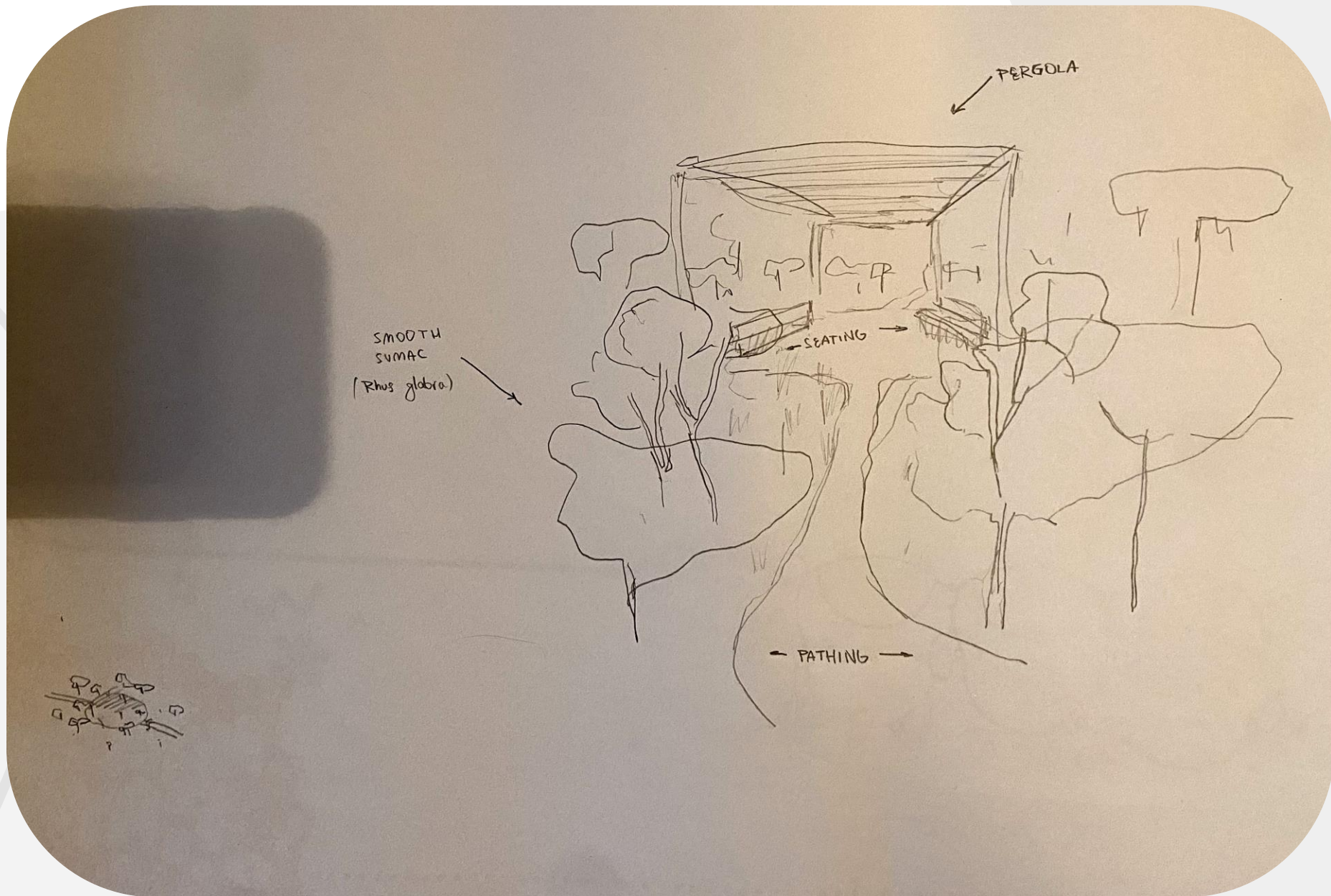


Autumn

Smooth and Staghorn Sumacs

Rhus spp.

early concept art,
sketch



Cottonwood Park Addition: Sumac Groves



3-dimensional model by author, render by artificial intelligence software



Bennet Park



Bennet Park Plan Overview

The vision for Bennet Park is to serve as a central node for the city and support space for the downtown; activity here is aimed at being particularly multi-generational and heavily supported by nearby equipment and amenities. The park is designed to be in use for every hour of the day that Bennet's downtown is occupied, and is especially aimed at families and visiting guests.

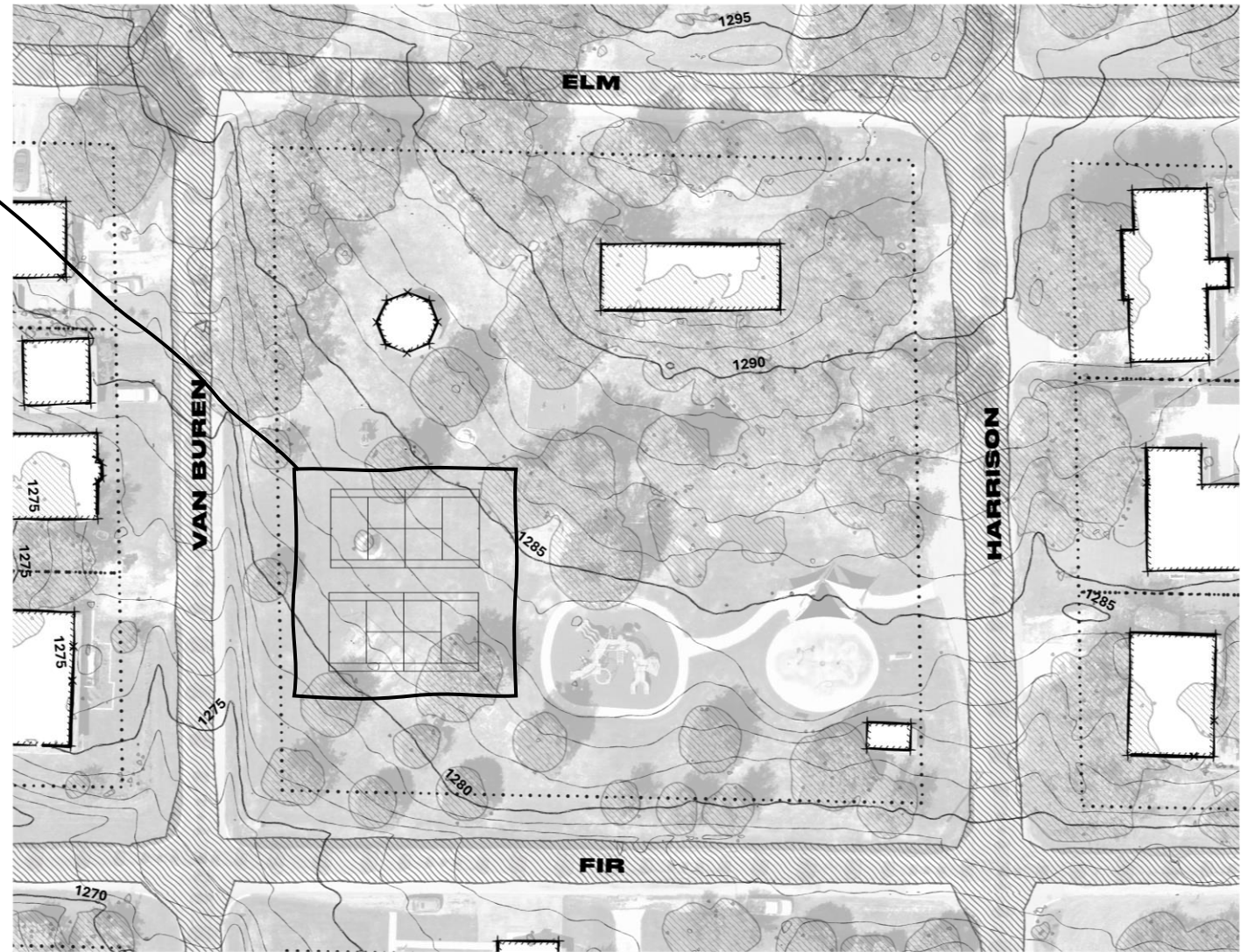
Primary aims for Bennet Park:

- To continue to provide a 'go-to' park for families of Bennet with young children, providing a more traditional park experience
- With the addition of possible racket courts, to be a new site of recreation for those interested in playing tennis and pickle-ball
- To be one of many central meeting spots that support city activities
 - To provide a potential 'home ground' for visitors of Bennet who do not live directly in the community
 - To be a site where downtown activities can launch from

Two Standard Doubles
Tennis Court:
36' x 78' each
+
Additional Buffer Zone:
120' x 120'

5-6 trees relocated or
removed

5-6 park structures
relocated or removed

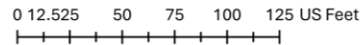
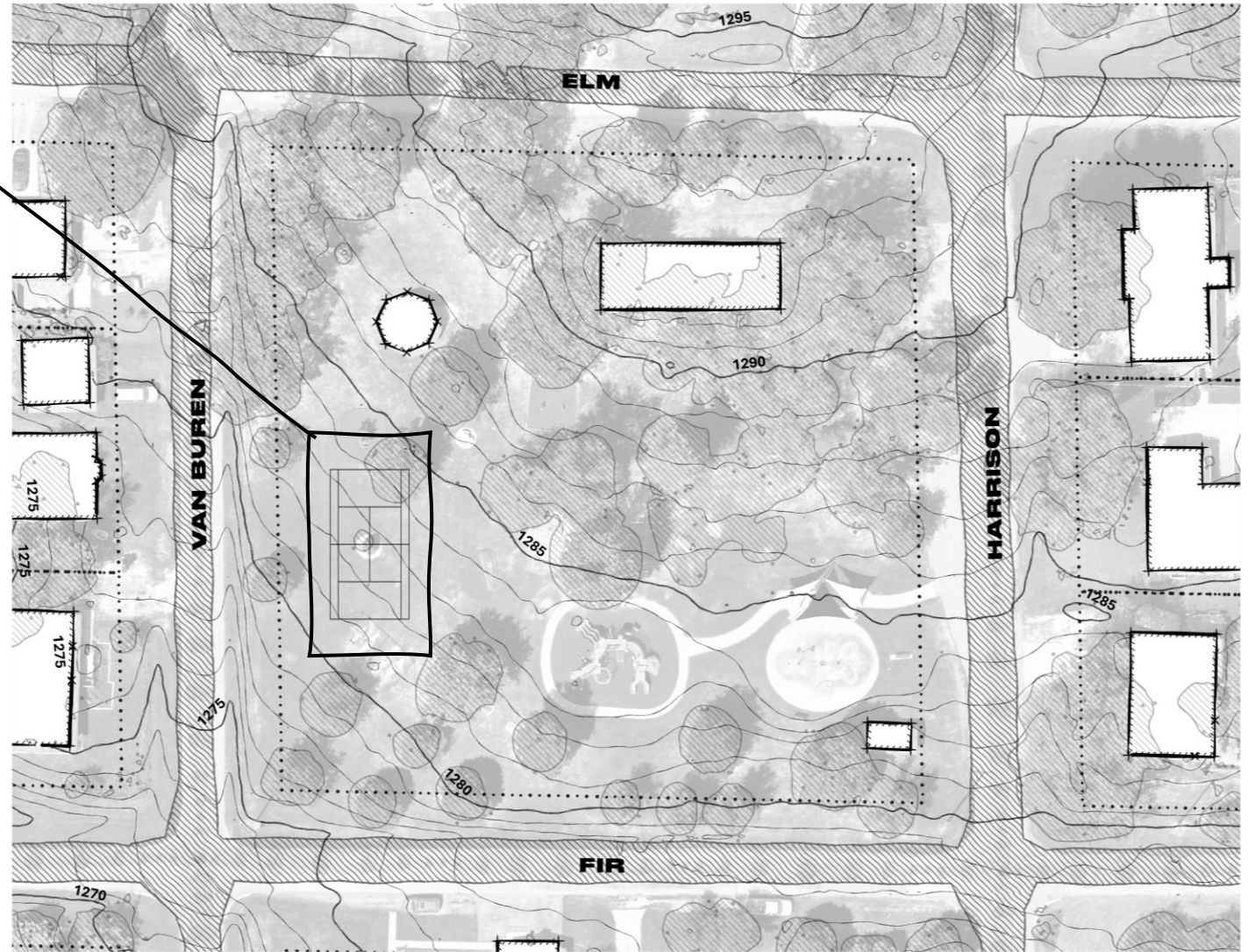


Bennet Park, Demonstration of Tennis and Pickleball Addition

One Standard Double
Tennis Court:
36' x 78'
+
Additional Buffer
Zone: 60' x 120'

2-3 trees relocated or
removed

4-5 park structures
relocated or removed



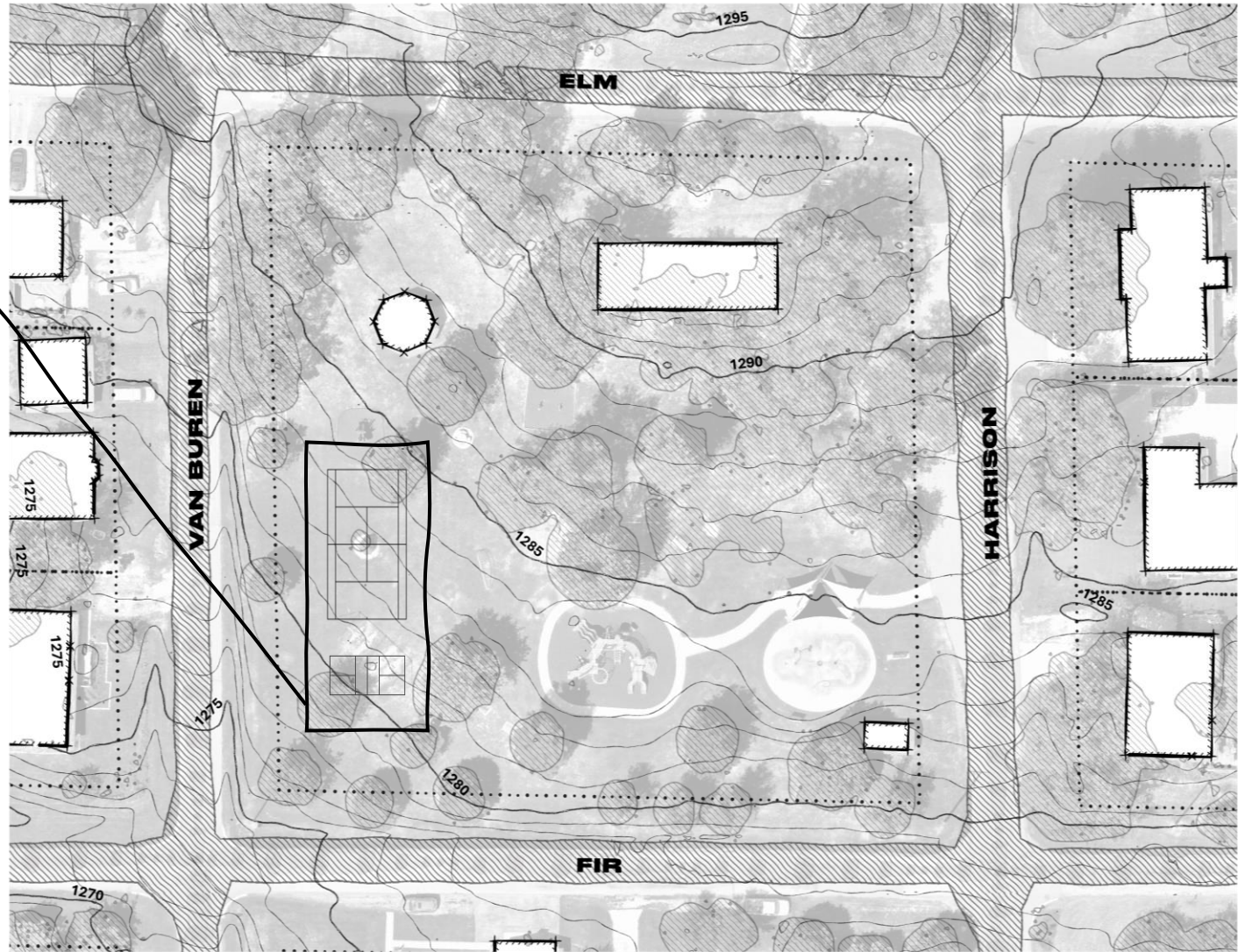
Bennet Park, Demonstration of Tennis and Pickleball Addition



One Standard Double
Tennis Court:
36' x 78'
+
One Standard
Pickleball Court:
44' x 24'
+
Additional Buffer
Zone: 60' x 150'

4-5 trees relocated or
removed

4-5 park structures
relocated or removed



0 12.525 50 75 100 125 US Feet

Bennet Park, Demonstration of Tennis and Pickleball Addition





Whispering Pines Park



Whispering Pines Park Plan Overview

The vision for Whispering Pines Park is both as a disc golf course and as a walking trail circuit embedded in a stylized prairie; continuing to utilize and improve Whispering Pines Park as a disc golf course is understood to be compatible with the aim of introducing native prairies and pollinator gardens to the site. Simultaneous use by disc golfers and pedestrians in this environment should contribute to laid-back pastoral feel.

Primary aims for Whispering Pines Park:

- To continue to serve as an interesting disc golf course with variable difficulty levels
- To serve as a walking trail in a lush, Nebraska-style, naturalistic park environment
- To contribute to future flood control, water resource management, and nature education
 - Work with the adjacent creek as an aesthetic and strategic asset



generated by artificial intelligence

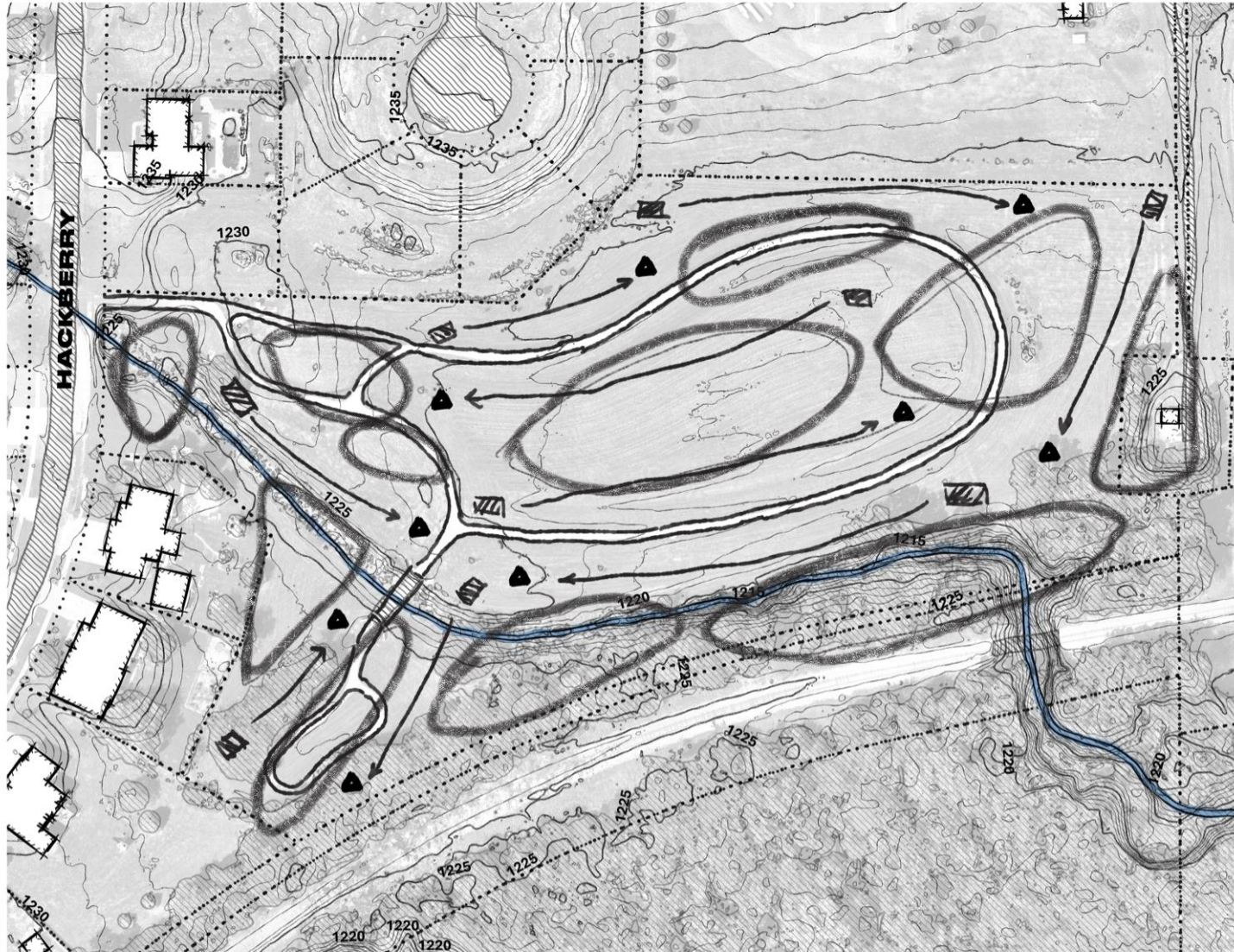
Turf grass at Whispering Pines park can be periodically replaced with plantings of native grasses and perennials as budget allows; these areas can begin in the least obtrusive spaces of the course in order to gauge public response, measure success, and gather additional support.

Over the course of the following years, the periodic installation of additional plantings can defray costs and demonstrate plants best suited for the area.

Eventually, a quilt work of ‘native prairies’ will compose ‘the green’ and ‘the rough’ of the course, depending on mowing and management in each pocket.



digital photograph



Whispering Pines Park, Demonstration of Disc Golf Prairie

With strategic plantings of hardy native grasses and perennials in selected areas, the course can be selectively mowed to allow for taller growth in some areas, and closer crops in others:

- Little Bluestem (*Schizachyrium scoparium*)
- Side Oats Grama (*Bouteloua curtipendula*)
- Blue Grama Grass (*Bouteloua gracilis*)
- Buffalo Grass (*Bouteloua dactyloides*)

- Black-Eyed Susan (*Rudbeckia hirta*)
- Coreopsis (*Coreopsis spp.*)
- Yarrow (*Achillia millefolium*)
- Foxglove Beardtounge (*Penstemon digitalis*)
- Purple Prairie Clover (*Dalea purpurea*)

The background features a stylized palm frond in the upper left corner. The rest of the background is composed of large, overlapping abstract shapes in shades of gray and white, creating a modern, minimalist aesthetic. A thin horizontal line is visible near the bottom of the page.

Bennet Community Plaza

Bennet Community Plaza Plan

Overview

The vision for a new community plaza in Bennet is a progression beginning with pavilion-style hardscaping, progressing to the addition of outdoor seating, amenities, and structures, and then culminating with the construction of new building to serve as a community center. This plaza will then serve as an all-purpose and year-round gathering space for the people of Bennet.

Primary aims for Bennet Community Plaza

- To, through the application of a multi-stage and multi-year process, build a public community center for the city
- To provide an additional public venue for downtown events to launch from and end at
- To be a city space capable of providing a venue for larger-scale events like concerts, celebrations, and public forums

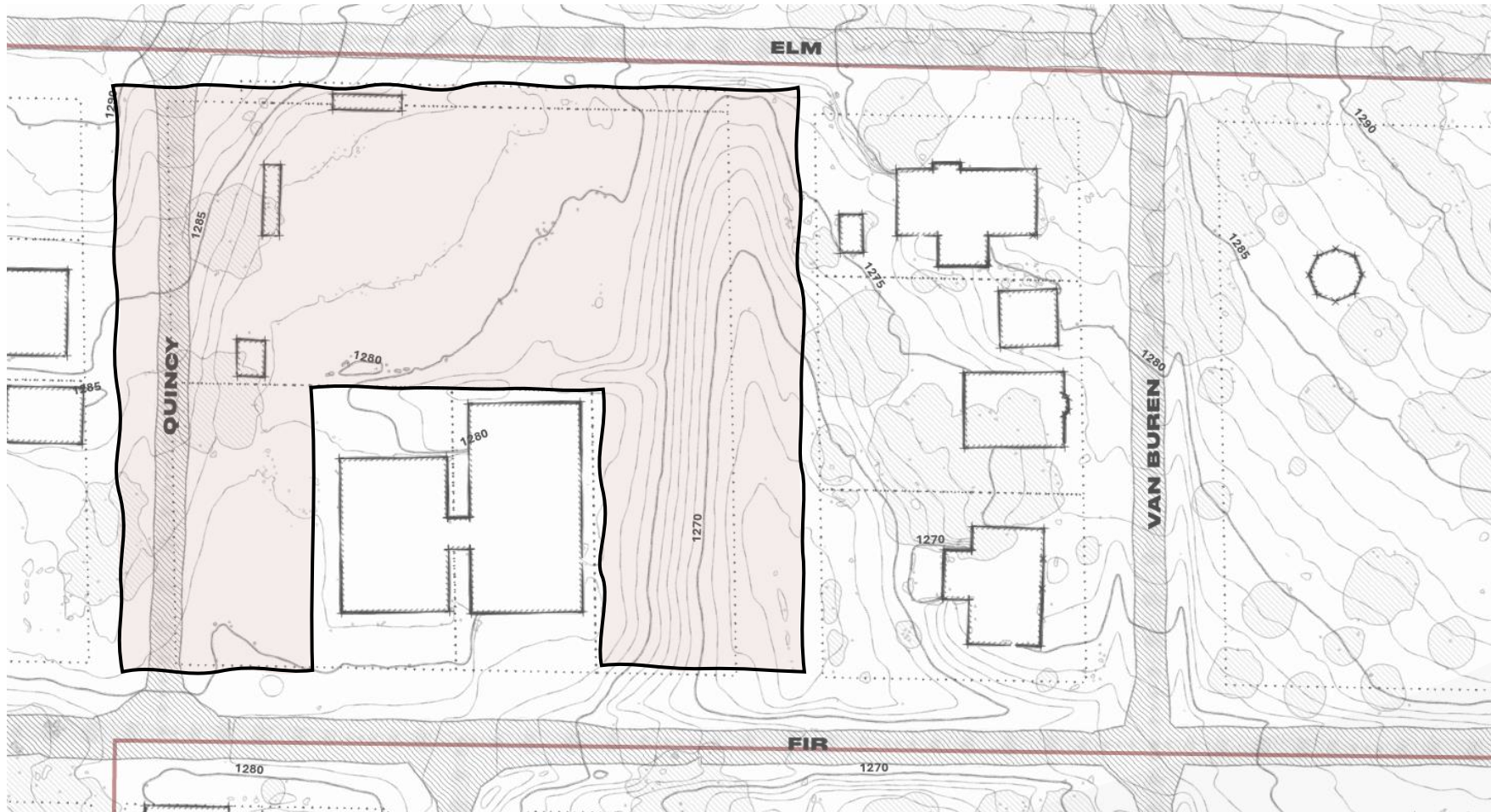
“At the community open house, the recommendation of a community center was by far one of the most popular reaction points and was met with an overwhelmingly positive response. The authors, therefore, strongly recommend the establishment of a new and intentional community space for the city of Bennet.

Developing a central community space sits at the intersection of improvements to the built environment and the encouragement of civic engagement. The vision for this space is a public indoor-outdoor zone that can support a variety of activities throughout the year. This zone need not necessarily be (or start out as) a large climate-controlled facility; instead, it could begin as limited but intentional improvements to create a community space...

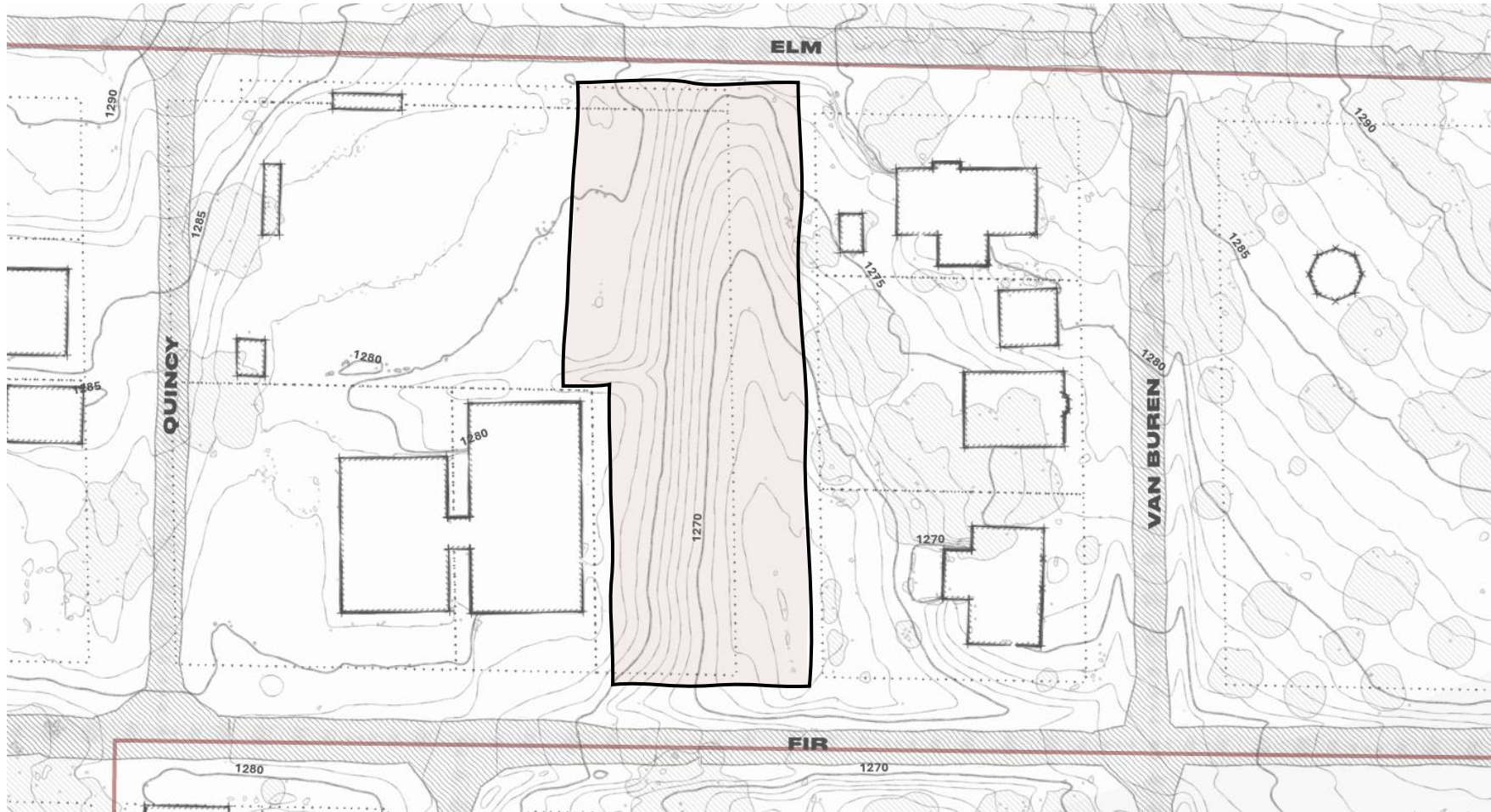
So long as the fundamental criteria that allow people to gather comfortably are met, an appropriate space for civic engagement and community activities can be had.”

From the *Bennet, NE Downtown Economic Development Plan* adopted 2023, section written by author





Fire station locale, full, potential siting space:
130,000 sq feet, just under 3 acres, and 85% of your standard 'Costco' warehouse



Fire station locale, partial, potential siting space:
55,000 sq feet, over 1 acre, and 35% of your standard 'Costco' warehouse

Plaza Timeline

YEAR 1

Gather public support for the idea of a community plaza, secure funding for the early stages of the project.

YEAR 2

Develop a solid hardscaping, landscaping, and building plan for the plaza. Begin hardscaping.

YEAR 3

Begin landscaping. Secure funding for and begin populating with furniture and lighting.

YEAR 4

Provide an outdoor or temporary structure, use public support to gather funding for a permanent structure

YEAR 5

Begin the process of planning for a permanent structure, continue to fundraise, move towards construction

The background features several light grey decorative elements: a stylized leaf outline in the top left, a large solid grey shape in the top right, and a large grey shape in the bottom left. A thin horizontal line runs across the bottom of the page.

End of Supplement