



# **Community Impact through Education: A proposal for the City.**

Affordable permanent and semi-permanent housing,  
where the owners will feel proud and call it home.

## **Introduction**

**Unfortunately, the social problems of the population in the USA have been increasing systematically for a long time. Despite multiple programs and efforts, unemployment, drugs, violence, among other evils have a growing and painful presence in our country every day.**

**Based on studies that identify the systematic causes of this scourge, it is considered that more than large programs of wide scope, actions in the communities, which call on many factors to join forces in this battle to help specific groups, are more effective and sustainable in the long term.**

**It is becoming increasingly evident that the absence of a home, living on the streets, being homeless, is the most influential element in the emergence and development of these enormous social problems.**



**"We are once again putting housing first to end this crisis and build strong, healthy communities."**

**Marcia L. Fudge.**

**Secretary of Housing and Urban Development**

# BRACE PROJECT

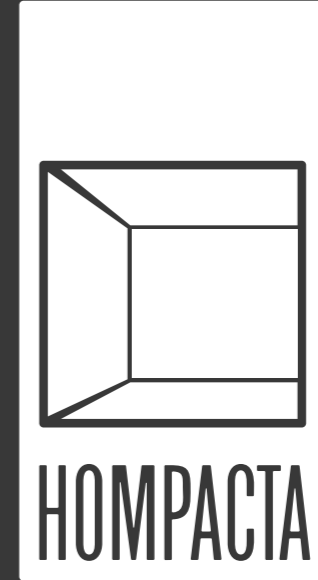
YOUR WAY, OUR WAY HOME

**Community Impact through Education:**

**A proposal for the City**

## **Affordable Housing with Educational Training:**

- **Affordable Housing:**  
The simple delivery of a home is not a guarantee of the social changes that are needed for people and communities.
- **Training:**  
Learning a trade while participating in the construction of these houses consolidates the sense of belonging and the transformation of those who will later live them. In the same way, it provides them with a job and the necessary training that, once their house is complete, will serve to build more houses and expand their work horizon.



Presenting a construction project that facilitates the construction of accessible houses, and that enables on-site training of future owners, presented by Hompacta.

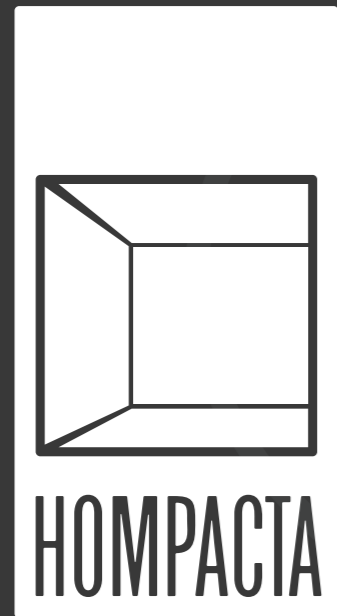


# AUDERE

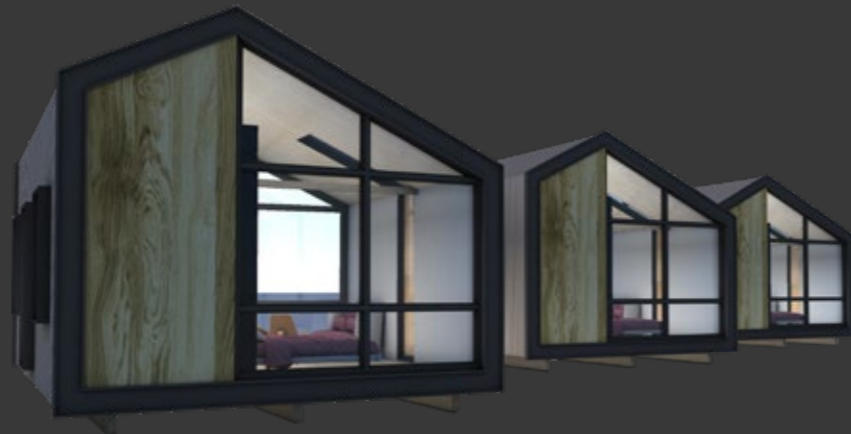
TECHNICAL INSTITUTE

Audere Technical Institute, based in Sanford, will coordinate, prepare and supervise the training programs necessary to support this project.

Designed by



AFFORDABLE COMMUNITIES



Trained by



**AUDERE**  
TECHNICAL INSTITUTE



Participating in the construction of these houses consolidates the sense of belonging and the transformation of those who will later live them. In the same way, it provides them with a job and the necessary training and skill sets that, once their home is completed, will serve to build more houses and expand their work horizon.





In a program of this type, we propose to build residential complexes, made up of a group of single and multi-family homes that are conceived within the same comprehensive project and with the same identity, styles and finishes.

The communities will be developed in successive stages of smaller subdivisions.

The houses will have all the amenities of modern life and in close and respectful relationship with the environment and their communities.



Our proposal suggests to develop these communities in small groups of 4 to 12 houses at a time and when these are completed, expenses begin to recover and the staff has advanced in their training, another stage will begin.



26 Homes, Community Center and Common Areas | Area: 3 Acres

**“By wisdom a house is built, and by understanding it is established; by knowledge the rooms are filled with all precious and pleasant riches.”**

**Proverbs 24:3-4**