



G I F T S S H O W C A S E

PART - 5



Navy Blue



Special textured
2-tone knit fabric

Dark Grey



White



- Swing+ Tech swing support mechanism
- Enhanced stretch for better range of motion
- UV protection against harmful UV sunlight
- Moisture wicking DryNCool® fabric
- Lightweight fabric

READY STOCK



Item : SNP

Content : 100% polyester, Special Knit

Measurement : Gulf Sizes Available : S, M, L, XL, XXL, 3XL

Print Technique :

① Screen Printing ② Heat Transfer ③ Embroidery

Preferred Print Location : Left Chest Area / Sleeve

Max Print Size: 80 x 50 mm



FOR GOLF CAPS

PLEASE REFER PAGES

263, 264, 265, 266, 267, 268



BRAND NAME POLO SHIRTS



Ace Jacquard Polo with Bamboo

2 Tone fabric of 65% polyester and 35% rayon nanobam. 2 Button placket with embossed buttons. 1 x 1 flat knit rib collar. Necktape. Slide slits/ PGA tour print at the sleeve.

Sizes: S, M

Print Technique : Sc, HT, Embroidery Preferred Print Location : Left Chest Area / Sleeve Max Print Size: 80 x 50 mm

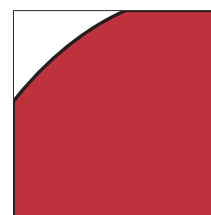
Packing Details : 58 x 35 x 24cm; 40 pcs/carton; gw/nw: 12.5 kg/carton

* Packing details may have \pm 10% variation based on size breakup

READY STOCK



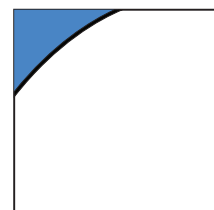
Colours in Ready Stock *



Red



Black



White

Pique knit of 100% combed cotton. GSM: 200-220. Reglan sleeves. 1 x 1 Flat knit rib collar. Contrast coloured piping on reglan sleeves. 2 Button placket with engraved tone on tone buttons. Self fabric necktape. Slazenger embroidery on backside. Embroidered main label at inside halfmoon.

Compliance : AZO, Formaldehyde, PCP, Uses non-carcinogenic dyestuff, APEO.

Sizes: Red - S, M, L, XL, XXL

Black, White, - S, M

Print Technique : Sc, HT, Embroidery Preferred Print Location : Left Chest Area / Sleeve Max Print Size: 80 x 50 mm

Packing Details : 51 x 32 x 27cm; 30 pcs/carton; gw/nw: 9.5 kg/carton

* Packing details may have \pm 10% variation based on size breakup



Double pique texture in two ply ensures lasting feel and performance, wash after wash.

Colours in Ready Stock *



Red



White



Yellow



2 ply ring special yarn ensure lasting feel & Performance

Item: Macy | GSM : 260/265 | Content : 100% cotton. 2ply premium super combed yarn | Measurement : Gulf | Sizes Available : M, L, XL, XXL



100% cotton. 260 GSM 2 ply super combed pique polo shirt.

Premium quality comparable to top brands.

Performance for colour fastness, shrinkage and shape retention - wash after wash.

Well knit collar and cuff for stability, smart buttons, side slits for added comfort.



Print Technique :

- ① Screen Printing ② Heat Transfer ③ Embroidery

Preferred Print Location : Max Print Size:

Left Chest Area / Sleeve

80 x 50 mm

Care Instructions:



Packing:



56 x 34x 39 cms ; 50 pcs /carton ; gw/nw: 20kg / carton

* Packing details may have ± 10% variation based on size breakup



Trendy embossed buttons



Side slits with bartack

* Printing Limitations prevent exact fabric and color representation.
The shades in the lots may differ due to lot-to-lot variations.
The difference is no more than internationally accepted norms of the garment trade.

READY STOCK



DRYNCOOL EXCLUSIVE QUALITY TEENAGER POLO SHIRTS



THE TEENAGER'S POLO



Colours in Ready Stock

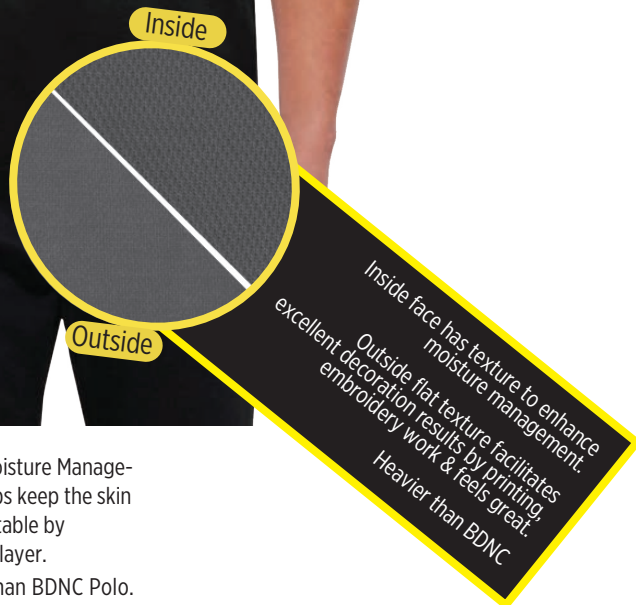


White



Black

READY STOCK



Dryncool is an advanced Moisture Management system (MMS) that helps keep the skin cooler & drier - more comfortable by transporting sweat to outer layer.
Premium Quality Heavier than BDNC Polo.
No fuss Performance.
Creaseless.
Contrast tape on button placket. Contrast neck tape highlighting the style.
Authentic MMS logo

Item: EDNC | Content: Dryncool fabric
Measurement: Europe | Sizes Available: S, M

Print Technique :

- ① Screen Printing
- ② Heat Transfer
- ③ Embroidery

Preferred Print Location :

Left Chest Area / Sleeve

Max Print Size:

80 x 50 mm

Care Instructions:



Packing:



52.5 x 32.5 x 42.5 cms ; 50 pcs /carton ; gw/nw: 18kg / carton

* Packing details may have ± 10% variation based on size breakup

* Printing Limitations prevent exact fabric and color representation.
The shades in the lots may differ due to lot-to-lot variations.
The difference is not more than internationally accepted norms of the garments trade.



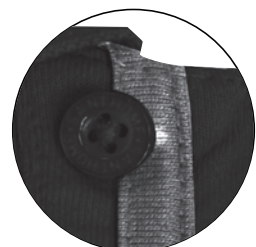
Contrast flat piping
on inside placket



Side slits with
contrast, bartack



Contrast piping on
shoulder & cuff



Trendy embossed
buttons



White



Grey

100% Cotton long sleeve shirt with DuPont Teflon fabric protector. Breathable, Durable, Safe, Gentle fabric with Oil repellance & Stain resistance by *Tonino Lamborghini*

Print Technique : SC, HT, EMBROIDERY Preferred Print Location : Left Chest Area / Sleeve Max Print Size: 80 x 50 mm

Packing Details : 56.5 x 34x 42.5 cm ; 50 pcs /carton ; gw/nw: 19.2kg / carton Size: XS - XL

* Packing details may have \pm 10% variation based on size breakup

READY STOCK



Cream



Black



Navy Blue

Polo Shirts- 100% cotton short sleeve by *Tonino Lamborghini*

Print Technique : SC, HT, EMBROIDERY Preferred Print Location : Left Chest Area / Sleeve Max Print Size: 80 x 50 mm

Packing Details : 48 x 33x 42.5 cm ; 40 pcs /carton ; gw/nw: 16.4kg / carton Size: M, L, XL

* Packing details may have \pm 10% variation based on size breakup



GIORDANO EASY CARE SHIRTS

Regular Fit

Antibacterial

This item has been treated with antibacterial properties, helping it stay fresh against common bacteria, such as Golden Staph, E. Coli and Candida Albicans.

Easy iron

100% Cotton Oxford Fabric

It offers superior hand feel.

Button Down Collar, with patch pocket at chest

Shirt designed as formal with comfort anytime & anywhere

Wrinkle Free treated to avoid crinkles and keeps it fresh

Mechanical stretch imparted on fabric to suit the body

READY STOCK

100% COTTON



White



Blue



Grey





White



Blue



READY STOCK



- LA wrinkle-resistant finish
- Itch-free label edges
- Anti-Crease, DP Rating 3
- Scottish Classic Oxford weave
- Top-tier long staple cotton
- Special tape ensures pucker-free seams & placket
- Recycled Polybag Packing

Item : SANTHOME OXFORD SHIRT

Content : 100% Cotton

Measurment : Gulf Sizes Available :

SANTHOME Oxford Shirt is made for daily comfort. The fabric is cotton with Oxford weave, treated for anti-crease (DP Rating 3). The box pleat in the back assists comfort in hand movement. Tailored to perfection this shirt is a delight to wear.

Print Technique : SC, HT, EMBROIDERY

Preferred Print Location : Above Pocket

Max Print Size: 80 x 50 mm



RECYCLED SHIRT

SANTHOME

READY STOCK



White



Black



- > 100 gms plastic prevented from landfill per shirt
- > Blend of cotton & recycled polyester for comfort
- > Classic Oxford Weave
- > Button-down collar



Item : RECYCLED SHIRT

Content : 47% Cotton & 53% Recycled Polyester Blend

Measurment : Gulf Sizes Available : S, M, L, XL, XXL, XXXL

Print Technique : SC, HT, EMBROIDERY

Preferred Print Location : Above Pocket

Max Print Size: 80 x 50 mm



SUBLIMATION

Supports Full Color Sublimation Printing

Light weight, Special Knit fabric,
with DrynCool Function

Item : ADS (ALLDAYSPORTS) | Content : Dryncool Sports fabric
Measurement : Gulf | Sizes Available : S, M, L, XL, XXL, 3XL

Print Technique :

- ① Screen Printing ② Heat Transfer ③ Embroidery
- ④ Sublimation

Preferred Print Location : Max Print Size:
Left Chest Area / Sleeve 80 x 50 mm

Care Instructions:



READY STOCK



Item : SALAMA | Content : 100% Polyester
Measurement : Gulf | Sizes Available : S, M, L, XL, XXL, 3XL

Print Technique :

- ① Screen Printing ② Heat Transfer ③ Embroidery

Preferred Print Location : Max Print Size:
Left Chest Area / Sleeve 80 x 50 mm

Packing:



* Packing details may have $\pm 10\%$ variation based on size breakup

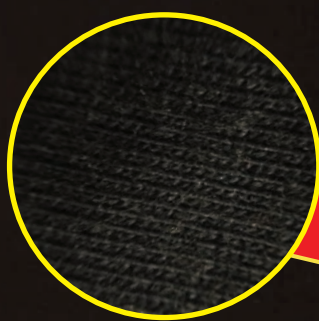


Care Instructions:



* Printing Limitations prevent exact fabric and color representation.
The shades in the lots may differ due to lot-to-lot variations.
The difference is no more than internationally accepted norms of the garments trade.

READY STOCK



Premium Cotton fabric with super hand feel and smoothness



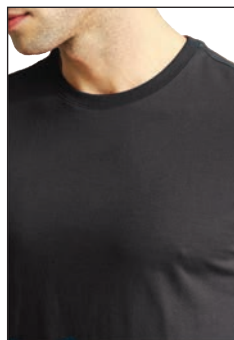
Colours in Ready Stock*



White



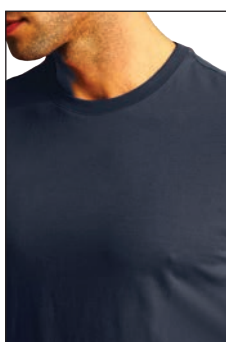
Petrol



Black



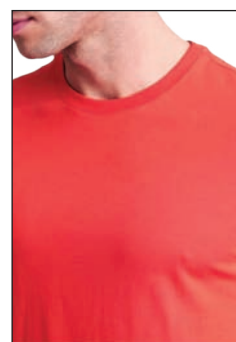
Orange



Navy Blue



Ash melange



Red

Item : BIO 180 | GSM : 180 | Content : 100% cotton. Super combed with Bio - Enzyme | Measurement : Gulf | Sizes : S, M, L, XL, XXL, 3XL

This Premium cotton T shirt uses high quality LONG STAPLE cotton from Central India.

This ensures superior consistency of the yarn it is spun from. Resultant fabric knitted shows the rich handfeel and luxury of COTTON we love. BIO process adds further to the smooth and soft luxury one would never want to come out of...!

Print Technique :

- ❶ Screen Printing
- ❷ Heat Transfer
- ❸ Embroidery

Preferred Print Location : Max Print Size:
Left Chest Area / Sleeve 80 x 50 mm

Care Instructions:



Packing:



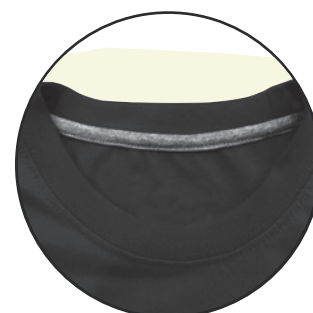
52x 32.5x 50 cm ; 100 pcs /carton ; gw/nw: 21.5kg / carton

* Packing details may have ± 10% variation based on size breakup

* Printing Limitations prevent exact fabric and color representation.
The shades in the lots may differ due to lot-to-lot variations.
The difference is no more than internationally accepted norms of the garment trade.



Tagless main label



Contrast neck tape

READY STOCK

CORE365

by
SANTHOME

READY STOCK

CORE365 ROUND NECK T-SHIRTS



Black



White



Red



Airforce Blue



Sky Blue

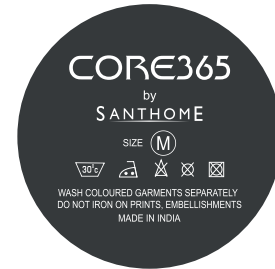


Jungle Green



Charcoal Grey

READY STOCK



Tagless Label

Item : CORE365 | GSM : 160 | Content : Blended Cotton.
Measurement : Gulf Sizes Available : S, M, L, XL, XXL, 3XL

Feel the comfort with CORE365 - soft, blended cotton fabric t-shirt with a modern stretch classic fit. Maintains shape on washing

Print Technique :

① Screen Printing ② Heat Transfer ③ Embroidery

Preferred Print Location : Left Chest Area / Sleeve

Max Print Size: 80 x 50 mm

Care Instructions:



CORE365 is a premium soft, blended cotton fabrication t-shirt with a modern stretch fit. Feels soft on the body, maintains shape on washing, genuine stretch fitted and tag-free

CLASSIC CREW
Perfect for layering

GENUINE FIT
Moves freely with you

TAG FREE
Prevents irritation

CORE365
by
SANTHOME

كور365 تي شيرت قطنى فاخر ، مصنوع من نسيج القطن الطبيعي الممزوج بتصميم عصري ، ناعمة على الجسم ، لا تتكماش عند الغسيل وتحتفظ بنفس الشكل ، تحتوي على نسيج مطاط اصلي ويدون رقعة.

تي شيرت برقعة دائرية كلاسيك مثالية عند اللبس تحت القمصان

نسيج اصلي مريح تسمح بحرية الحركة

بدون رقعة لا تسبب الحساسية

كور365
من
سانتوم



READY STOCK



- > Black vest from 100% recycled polyester
- > 100% RPET padding
- > Regular fit
- > Zipped side pockets
- > Wind protection layer

Item : SANTHOME Zip Up Puffer Vest

Content : RPET / Polyester

Measurment : Gulf Sizes Available : S, M, L, XL, XXL, XXXL

SANTHOME Santhome Regular Puffer Vest is made of 100% recycled polyester (Black is recycled) with zipped side pockets and wind protection. Crafted in a monochrome design, the vest is a regular fit with padded body. This is a perfect winter must-have.

Print Technique : SC, EMBROIDERY

Preferred Print Location : (Front Left) (Back Centre)

Max Print Size: (Front Left) 80 x 30 mm (Back Centre) 200 x 40 mm



without zipper



with zipper



READY STOCK

Item: SANTHOME ARTIK collection – Hoodies

Content: Cotton rich Soft single fleece.

Measurment: Gulf | **Sizes Available :** S, M, L, XL, XXL, XXXL

SANTHOME ARTIK Collection Hoodie Sweatshirts are made from high quality fleece. The inside is brushed which keeps you warm. The outer is plain and smooth. Contrasting Trims add to the elegance. Kangaroo pockets that keep your hands cozy. These hoodies are a perfect outdoor must have!

Print Technique : SC, HT, EMBROIDERY

Preferred Print Location : (Zipper) Front Pocket

Max Print Size: 80 x 50 mm



SANTHOME

- 100% Acrylic
- Cashmere Like
- Sweater for winter, autumn & spring

SANTHOME SWEATER

Print Technique : Embroidery Preferred Print Location : Left Chest Area
Max Print Size: 80 x 50 mm Size: M - XXL

- * Printing Limitations prevent exact fabric and color representation. The shades in the lots may differ due to lot-to-lot variations. The difference is not more than internationally accepted norms of the garments trade.
- * Packing details may have ± 10% variation based on size breakup



REUSABLE NON-MEDICAL FACE MASK

50X

REUSABLE & MACHINE WASHABLE WITH GUARANTEE OVER 99% ANTIBACTERIAL RATE

100%

ECO-FRIENDLY COTTON

> 95%

BACTERIAL FILTRATION EFFICIENCY (BFE) FOR PARTICLES > 3 MICRO METER



MCMS 105 - REPS

SANTHOME PROTECT Reusable Non-Medical 2 layer cotton face mask that is treated with Silvadur TM (A DuPont product) antibacterial agent. Comfortable daily use masks that protect you and do not harm the environment!

Print Technique : SC, HT Preferred Print Location : Right Side Max Print Size : 60 X 40 mm
Packing Details : 57 x 40 x 20 cm ; 600 pcs / carton ; gw / nw : 9.20 kg / carton



ADJUSTABLE EARLOOPS
ONE SIZE FITS ALL



Grey/Black Kids



Navy Blue/Grey Kids



MARONI

HWSN 192 K - Grey/Black - Kids HWSN 193 K - Navy Blue/Grey - Kids

SANTHOME PROTECT Reusable face mask with 6 layer triple filtration system. The comfortable design with adjustable nose clip, soft elastic ear loops and soft materials that prevent heat built-up ensures this mask can be used for a long time. Certified Bacterial Filtration Efficiency and Particulate Filtration efficiency of over 95% (>3 micron). Reusable upto 30 washes.

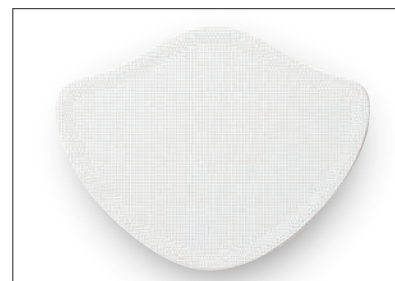
Print Technique : SC, HT Preferred Print Location : Side Max Print Size : (Medium) 40 X 50 mm (Kids)
Product Size : Medium 20 X 13 cm / Kids
Packing Details : 63.5 x 56 x 33 cm ; 500 pcs / carton ; gw / nw : 15.22 kg / carton



- Designer Masks From XDDESIGN, Holland
- VIRALOFF® Technology for Protection
- Built for 1,000 Hours of Usage



Layers



Filter

READY STOCK

TALSI

HWXD 171 - Black HWXD 173 - Navy Blue

XDDESIGN® This comfortable XD DESIGN face mask is made for every face. Lightweight three-layer design; The polyester front layer is treated with ViralOff®, a technology that removes 99% of the viruses in 2 hours. The middle layer contains a unique laboratory tested Hyproof® Nanofibre filter. This filter has a filtering efficiency of 95%. The inner layer is made of polyester. With three-dimensional chin structure and nose bridge for easy breathing. This set includes: 1 reusable and washable face mask, 5 reusable filters, 1 storage pouch. This device is not a medical device within the meaning of Regulation EU / 2017/745 (surgical masks) nor is it personal protective equipment within the meaning of Regulation EU / 2016/425 (filter masks type FFP2). Registered design®

Print Technique : SC , HT
Product Size : 18 x 2 x 13.5 cm

Preferred Print Location : Right Side Max Print Size : 60 X 40 mm
Packing Details : 62 x 40 x 32 cm ; 180 pcs / carton ; gw / nw : 13 kg / carton



SANTHOME
HEADWEAR

SWIFT



STRUCTURED FITTED

Designed with a structured build that retains its form and has a crown that is slightly elevated.



CURVED VISOR

This cap is designed to keep a proper curved shape at all times.



SILENT VELCRO CLOSURE

Uses a unique **silent velcro** closure system that also guarantees an excellent fit for all sizes.



DOUBLE MESH BACK PANEL

Trucker cap made with 100% polyester double mesh back panel for extra air and breathability.



Look for the Santhome rivet inside on genuine Santhome caps only

READY STOCK



Black



Navy Blue



White



Double Mesh Cut on the Back allows good ventilation



SWIFT

HWSN 507 - Black HWSN 508 - White HWSN 509 - Navy Blue

SANTHOME Swift is a structured six-panel trucker cap with double mesh on back side for allowing extra air in and heat out. Designed with an innovative silent Velcro strap design that takes the screeching sound out of normal velcro straps and feels much more premium. Material: 35% cotton, 65% polyester

Print Technique : HT, EMBROIDERY

Preferred Print Location : Front

Max Print Size : 45 x 35 mm

Product Size : 26 X 19 X 12 cm



SANTHOME
HEADWEAR

ACE



ADJUSTABLE BUCKLE

Adjustable back closure strap made of high quality metal buckle to ensure great fit for any size.



STRUCTURED FITTED

Designed with a structured build that retains its form and has a crown that is slightly elevated.



CURVED VISOR

This cap is designed to keep a proper curved shape at all times.



HIGH TECH LASER CUT

A lightweight, performance polyester cap with laser cut design for maximum ventilation.



Look for the Santhome rivet inside on genuine Santhome caps only

READY STOCK



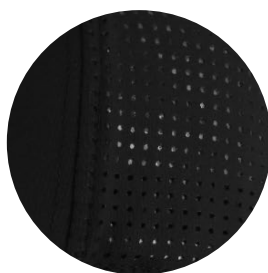
Black



White



Navy Blue



High Tech Laser Cut on the Side and Back allows good ventilation



ACE

HWSN 510 - Black HWSN 511 - White HWSN 512 - Navy Blue

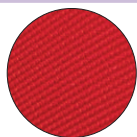
SANTHOME Ace is a structured-fitted five-panel cap with DryNCool proprietary moisture management, adjustable metal buckle and curved visor. Fine lasered holes on side and back add ventilation and keep you cool and comfortable in the sun, or while playing sports. Classy and sporty design!

Print Technique : HT, EMBROIDERY

Preferred Print Location : Front

Max Print Size : 60 x 35 mm

Product Size: 27 X 19 X 13 cm



OTTOMAN KNIT FABRIC

Made of ottoman knit fabric - a heavy, plain, textured fabric with horizontal ribbing.



STRUCTURED FITTED

Designed with a structured build that retains its form and has a crown that is slightly elevated.



CURVED VISOR

This cap is designed to keep a proper curved shape at all times.

SANTHOME
HEADWEAR

TITAN



SILENT VELCRO CLOSURE

Uses a unique **silent velcro** closure system that also guarantees an excellent fit for all sizes.



97% RECYCLED POLYESTER

An eco-friendly cap that is made of 97% recycled polyester and 3% spandex. Spandex (for stretch) enables a great head fit



Look for the Santhome rivet inside on genuine Santhome caps only

READY STOCK



White



Black



Navy Blue



Red



Royal Blue



Grey



Silent Velcro



TITAN

HWSN 501 - White HWSN 502 - Black HWSN 503 - Navy Blue HWSN 504 - Red HWSN 505 - Royal Blue HWSN 506 - Dark Grey

SANTHOME Titan is a structured six-panel cap in 97% recycled polyester and 3% spandex with adjustable velcro and curved visor. A stylish addition to your everyday look now available in 6 colors.

Print Technique : HT, EMBROIDERY

Preferred Print Location : Front

Max Print Size : 45 x 35 mm

Product Size: 27.5 X 19 X 12 cm



SANTHOME
HEADWEAR

FLEX



UNSTRUCTURED FITTED

Designed with an unstructured build that offers major comfort and a relaxed, casual vibe to your look.



CURVED VISOR

This cap is designed to keep a proper curved shape at all times.



ADJUSTABLE BUCKLE

Adjustable back closure strap made of high quality metal buckle to ensure great fit for any size.



60% RECYCLED COTTON 40% RECYCLED POLYESTER

An eco-friendly cap that is made of 60% recycled cotton and 40% recycled polyester.



Look for the Santhome rivet inside on genuine Santhome caps only

READY STOCK



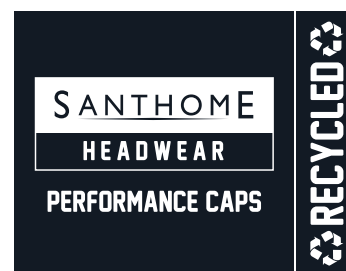
Sky Blue



Beige



Navy Blue



FLEX

HWSN 513 - Sky Blue HWSN 514 - Beige HWSN 515 - Navy Blue

SANTHOME Flex is an unstructured six-panel cotton rich cap in 60% recycled cotton and 40% recycled polyester. Perfectly suits the outdoor, casual vibe with adjustable metal buckle and curved visor. Available in 3 colors.

Print Technique : EMBROIDERY

Preferred Print Location : Front

Max Print Size : 45 x 35 mm

Product Size: 27 X 19 X 12 cm



6 PANEL RECYCLED DRY N COOL CAP

SANTHOMÉ



STRUCTURED FITTED

Designed with a structured build that retains its form and has a crown that is slightly elevated.

SANTHOMÉ
HEADWEAR

ULTRA



ADJUSTABLE BUCKLE

Adjustable back closure strap made of high quality metal buckle to ensure great fit for any size.



100% RECYCLED POLYESTER

An eco-friendly cap that is made of 100% recycled polyester.



CURVED VISOR

This cap is designed to keep a proper curved shape at all times.

DRYncool
BEST COMFORT

Fabric is a high quality breathable polyester with our advanced moisture management system (Dry N Cool).



READY STOCK



Look for the Santhome rivet inside on genuine Santhome caps only



Black



Navy Blue



White



ULTRA

HWSN 516 - Black HWSN 517 - White HWSN 518 - Navy Blue

SANTHOMÉ Ultra is a structured-fitted 6-panel RPET cap - made from 100% recycled polyester, and containing our proprietary DryNCool moisture management tech. Wear it the way you like with an adjustable metal buckle and curved visor. A great sustainable, yet stylish and sporty cap!

Print Technique : HT, EMBROIDERY

Preferred Print Location : Front

Max Print Size : 45 x 35 mm

Product Size: 27 X 19 X 12 cm



SANTHOMÉ

SANTHOMÉ Deluxe pique mesh spandex fitted cap



White/White sandwich



Navy blue/White sandwich



Red/Black sandwich



Black/White sandwich

- > One Size Fits All
- > Excellent Shape Retention Even After Multiple Uses
- > Contrast Color Sandwich On Front
- > Fabric With Pores For Air Ventilation

SC 105

Santhome Nu-Fit® Performance Caps are a premium quality 6-panel constructed pique mesh spandex fitted cap, utilizing the patented Stretch-Fitting technology from Nu-Fit®. Stretch fitting by Nu-Fit® has excellent shape retention even after multiple uses and one size fits all. The pique mesh knit provides air ventilation, and spandex provides sweat absorption. Contains contrast sandwich. Santhome Nu-Fit® Performance Caps are an excellent premium cap / sports cap / outdoors / baseball cap.

Print Technique : HT, Embroidery Preferred Print Location : Front / Back Max Print Size: 45 x 35 mm

Packing Details : 62x 36 x 56 cms ; 150 pcs /carton ; gw/nw: 16.5 kg / carton

READY STOCK



White with Black sandwich



Maroon



Pink with Purple sandwich



100% Heavy brushed cotton cap with metal buckle

Print Technique : HT, SC, EMBROIDERY

Preferred Print Location : Front

Packing Details : 72 x 45 x 39cm; 200 pcs/carton; gw/nw: 19 kg/carton



HEAVY BRUSHED COTTON CAP

SANTHOME



Black



White

- > Heavy Brushed Cotton Twill Cap
- > 6-panel promotional cap
- > Adjustable metal buckle



READY STOCK

TARTU

HWSN 521 - Black HWSN 522 - White

SANTHOME Complete your look with this structured six-panel heavy brushed cotton promotional cap in 100% cotton twill with adjustable metal buckle and curved visor.

Print Technique : SC, HT, EMBROIDERY

Preferred Print Location : Front

Max Print Size : 45 x 35 mm



Red



Black



White



Royal Blue



Navy Blue



Green



- > Heavy Brushed Cotton Twill Cap
- > 5-panel promotional cap - good logo space in front
- > All colors matched to Santhome BDNC Polo
- > Adjustable metal buckle

NARVA

HWSN 523 - Black HWSN 524 - White HWSN 525 - Navy Blue HWSN 526 - Royal Blue HWSN 527 - Red HWSN 528 - Green

SANTHOME Complete your look with this structured five-panel heavy brushed cotton promotional cap in 100% cotton twill with adjustable metal buckle and curved visor.

Print Technique : SC, HT, EMBROIDERY

Preferred Print Location : Front

Max Print Size : 60 x 35 mm



Navy Blue

White

Black

SAY NO TO GREENWASHING

Tell the true story of sustainability with genuine recycled rPET and cotton with validated claims.

Certified by Global Recycled Standard

GIFTS THAT GIVE BACK

785 million people - 1 in 9 - lack access to safe water. We are supporting Water.org to change this.

For each IMPACT cap sold, **2% of sales is donated** by the Xindao B.V. (Netherlands) to Water.org to save lives with safe water and sanitation.

water.org

IMPACT

READY STOCK

- > 2% of sales proceeds of each product committed to Water.org
- > Made of 100% recycled materials

- > Made with AWARE™ tracer
- > This cap saved 387 litres of water

**Ready Stock of these 4 colors
in Europe**



280 gr Recycled Cotton Cap with Aware Tracker - XD Impact Collection

HWAW 451 - Black HWAW 452 - White HWAW 453 - Navy Blue

XD COLLECTION No greenwashing, but telling a true story about sustainability! This Impact collection is made with AWARE™ tracer. With AWARE™, the use of genuine recycled fabric materials and water reduction impact claims are guaranteed by using the AWARE disruptive physical tracer and blockchain technology. Save water and use genuine recycled fabrics. With the focus on water 2% of proceeds of sold Impact product has been donated to Water.org. This cap has saved 387 litres of water. A simple and comfortable cap suited for anyone. This 6 panel cap has a curved visor, embroidered eyelets for ventilation and metal buckle. Cotton twill made of 100% recycled materials and AWARE™ tracer. The material weight is 280 g/m2. Size 58cm.

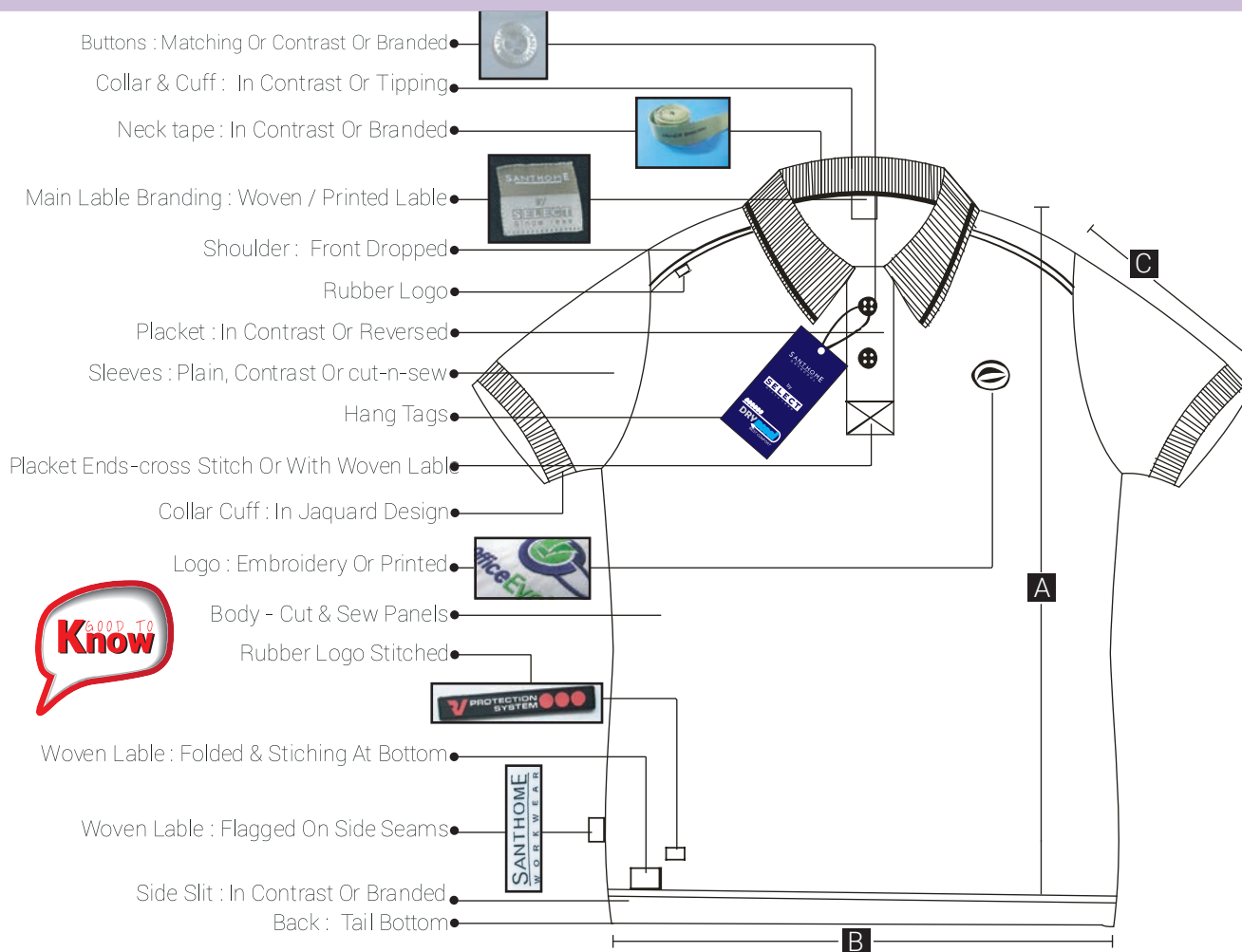
Print Technique : HT, SC, EMBROIDERY
Product Size: 58 cm

Preferred Print Location : Front
Packing Details : 36.5 X 45.5 X 69.5 cms ; 200 pcs / carton ; gw / nw : 17 kg / carton

Max Print Size : 45 x 35 mm



CUSTOMISED APPAREL



Typical measurements:-

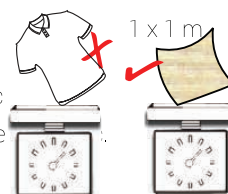
	Gulf/Asian Sizes			Europe Sizes		
	M	L	XL	M	L	XL
A	28	29	30	29	30	31
B	21	22	23	22	23	24
C	8	8.5	9	8.5	9	9.5

These measurements are for guidelines only. The actual measurements may vary slightly between garments as knit garments have internationally accepted higher tolerance values

GSM or GMS ?

Most manufacturers confuse clients with this. GSM: Grammes per sq. meter is the wt. of the fabric in a square of 1 meter x 1 meter. it remains the same in all sizes. Hence the correct way to describe GMS: is the wt. in grammes per piece of the Tee/Polo And will always vary with each size.

Thus, completely misleading. We ALWAYS specify the GSM. So you are rest assured of what we offer.



Heavier the better ?

Not necessarily. The quality of yarn will decide the quality and Price.

Super combed, combed, semi combed and carded: this is the quality of YARN in descending order.

We specify the yarn. So you are rest assured of what we offer.

What more we can offer:

You Are Welcome To Send Your Design Ideas And Originals. We Will Reproduce It For You..!



BELAND



VECCHIA



INBICTA

Various Trendy styles can be created with decoration by print and embroidery. Your special design can be created as per demand.

Fabric suggestions : 100 % Cotton, Polymesh, Dryncool, ADF etc.

Pantone matching items can be produced against MOQ requirements.

The brands & images used are for representation purpose only & belong to their respective brand owners.

CUSTOM MADE

CUSTOMIZED WINTER JACKETS



Brocky Jacket
in Tetron



100% heavy polyester soft micro jacket with multiple zipper pockets and snap button opening. Long jackets. Lined with heavy fleece. Subtle contrasts make it trendy and functional.



100% cotton twill reporter jacket with various pockets for multiple use.

The brands & images used are for representation purpose only & belong to their respective brand owners.



CUSTOMIZED ACTIVE WEAR



Polymesh Track set for ladies with lining of cotton jersey



CUSTOM MADE



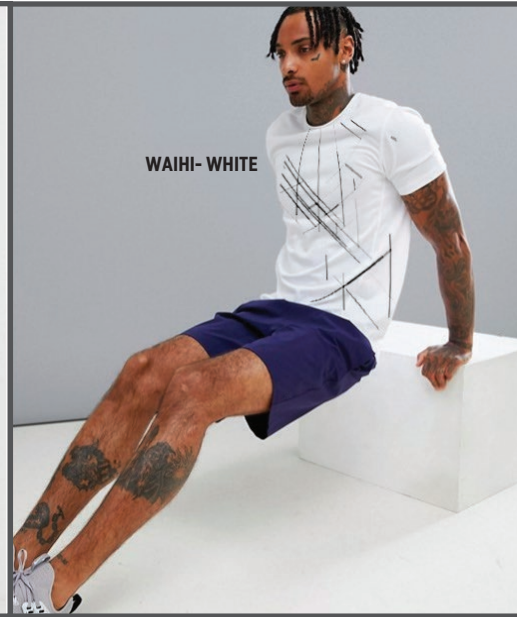
WROCLAW



BUKINI

Bukini using stretch material

The brands & images used are for representation purpose only & belong to their respective brand owners.



CUSTOM MADE

Amazing trendy sportswear of high quality can be produced using ADF, Polymesh or special materials. Branding by special quality printing is also possible against MOQ requirements.

The brands & images used are for representation purpose only & belong to their respective brand owners.



CUSTOMIZED COVERALLS

SANTHOME
WORKWEAR



CUSTOM MADE



SANTHOME WORKWEAR are customized for workshops and showrooms as smart outfits meeting exacting stds of quality and performance. # Kamer has provision for knee pads for extra protection at work. 100% cotton or polycot fabric will meet client requirements of comfort and utility.

The brands & images used are for representation purpose only & belong to their respective brand owners.



Formal shirts and trousers in various colours, fabric qualities. Designs can be made customized to the need of the industry. Shirts come in plains and oxfords. Trousers come in PV, PC and cotton.



Men's Solid shirt



Oxford Ladies Shirt

Formal modern fit PV pleated trousers

CUSTOM MADE



HILTON CARGO PANT

BEWEAR Shirt in 100% cotton twill has excellent resilience to everyday wash and wear. Two patch pockets with button through flaps on front and a pen slot on sleeves. Ideal for driver and security uniforms. Co-ordinated HILTON cargo pants in 100% cotton Chinos are a smart uniform for staff.



KORAM

KORAM Messenger Uniforms Set: Polycot Multipanel shirt with black Polycot trousers. Smart uniforms that will also deliver our identity!



T-SHIRTS

ORIGINAL
SELECT
QUALITY



CUSTOM MADE



Royal Blue



Orange



Sky Blue



Navy Blue



E-Green



B-Green



Red



Pink



White



Black



Grey Melange



Yellow



Beige



Maroon

Item : SELECT 180 | GSM: 180 gsm | Content : 100% COTTON

Sizes Available : S, M, L, XL, XXL

Regular round neck t-shirts for mass distribution

Print Technique : SC, HT, EMBROIDERY Preferred Print Location : Left Chest Area

Sleeve Max Print Size : 80 x 50mm

Packing Details : 58 x 38 x 35cm; 100 pcs/carton; gw/nw: 21.5kg/carton

* Printing Limitations prevent exact fabric and color representation.

The shades in the lots may differ due to lot-to-lot variations.

The difference is not more than internationally accepted norms of the garments trade.

* Packing details may have \pm 10% variation based on size breakup

SAILOR COTTON POLO SHIRTS



SAILOR



White



Cream



Yellow



Red



Navy Blue



Grey Melange



Sky Blue



Orange



B-Green



Black



Ash Melange



Royal Blue



E-Green



Maroon

CUSTOM MADE

Item : SAILOR POLO | GSM : 220 gsm | Content : 100 % cotton
 Sizes Available: S, M, L, XL, XXL

Regular pique polo for mass distribution

Print Technique :

- ① Screen Printing
- ② Heat Transfer
- ③ Embroidery

Preferred Print Location : Max Print Size:
 Left Chest Area / Sleeve 80 x 50 mm

Care Instructions:



Packing:



58x 29x 40cm; 50pcs/carton; gw/nw: 22kg/carton

* Packing details may have \pm 10% variation based on size breakup



* Printing Limitations prevent exact fabric and color representation.
 The shades in the lots may differ due to lot-to-lot variations.
 The difference is no more than internationally accepted norms of the garments trade.



EACH PRODUCT COMES
WITH 1-2 YEAR
BRAND WARRANTY

For support & warranty, please email
info@skross.com

SAFE + SIMPLE + SWISS

SKROSS® is the inventor of the all-in-one world adapters with country slider system and holds the global patent since 2002. Designed in Switzerland, the World Adapter Classic developed into a worldwide sales hit and a leading travel retail product sold in duty free and electronics stores all over the world.



The SKROSS® brand has grown further as a leading technology brand, with a wider range of high quality Swiss designed products ranging from powerbanks, wireless chargers, etc. Known for it's high product safety standards, innovative product development and Swiss Design, SKROSS® products are a staple brand with leaders, VIP's and global travellers.



A GLOBAL BRAND FROM SWITZERLAND

The consistent consideration of international safety standards, which is at the foreground in all product development, and uncompromising compliance with the highest requirements on quality and reliability has established SKROSS® as one of the market leaders over the last few years. The company is meanwhile represented in more than 100 countries and its products are available on more than 10,000 Points of Sale worldwide.

SKROSS® Travel is a range of uniquely designed travel accessories, bags and trolleys that are purpose-built for modern travellers. With it's pioneering Swiss Design mindset, Skross aims to be your travel companion where you are headed next!





Compatibility Input	Output
 USA, Japan Australia, China UK Euro	 Australia, China Europe (Schuko) Switzerland Italy UK Euro USA, Japan Brazil India

- Designed In Switzerland
- Suitable For All 2-pole (Unearthed) Devices
- Receptacles For: Euro, USA/Japan, Australia/China, UK
- Retractable Plugs: Euro, USA/Japan, Australia/China, UK
- Dual USB Top For Charging USB Devices Output 5V / 2.1A Shared
- Input Voltage: 100V – 250V ; Max. Load: 2.5A
- Power Rating: E.g. 100V – 250W / 250V – 625W
- Integrated Fuse: T2.5A

TASK 101 - SKROSS WORLD ADAPTER MUV MICRO USB

SKROSS® The World Adapter MUV Micro from SKROSS with dual USB charging functionality is the most compact 2-pole travel adapter for travellers from all over the world. The patented country slider system guarantees simple and safe connection in over 150 countries on all continents – irrespective of the socket standard.
 Print Technique : SC, PAD PRINTING Preferred Print Location : Front Max Print Size : 13 x 35 mm
 Product Size : 7.4 x 5 x 5.3 cm Packing Details : 34.5 X 29.5 X 18.5 cm ; 50 pcs / carton ; gw / nw : 8.66 kg / carton



TASK 103 - SKROSS WORLD ADAPTER EVO USB

SKROSS® The compact World Adapter EVO USB is a powerful next generation development of the 2-pole adapter from SKROSS combining the possibility to connect international unearthed 2-pole devices in more than 150 countries with dual USB charging functionality.
 Print Technique : UV, SC Preferred Print Location : Top Max Print Size : 25 x 30 mm
 Product Size : 6.4 x 5.5 x 6.9 cm Packing Details : 34.5 X 29.5 X 18.5 cm ; 50 pcs / carton ; gw / nw : 8.66 kg / carton

READY STOCK



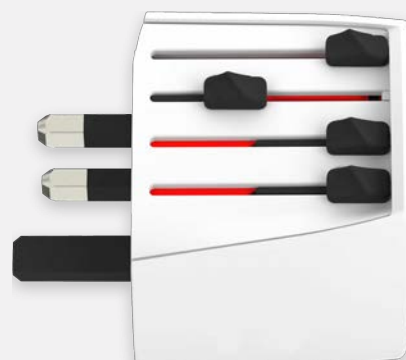
SAFE + SIMPLE + SWISS TRAVEL ADAPTER



SKROSS®
ADAPT TO THE WORLD



Scan Below QR
code to watch
product video



TASK 2109 - SKROSS WORLD ADAPTER MUV MICRO

SKROSS® This compact adapter gives peace of mind to travellers, connecting to power outlets anywhere in the world. Perfectly suited to all unearthed electrical devices such as cameras, shavers and smartphone chargers. Applicable worldwide: USA, China, Europe, India, Middle East and in more than 200+ other destinations. Designed in Switzerland.

Print Technique : UV, PAD PRINTING

Product Size: 63 x 61 x 55 cm

Preferred Print Location : Top

Packing Details : 32.5 X 40 X 18 cm; 50 pcs / carton ; gw / nw : 6.9 kg / carton

Max Print Size : 45 x 36 mm

READY STOCK



1 x USB
2.4 A max.

1 x USB C
15W max.



TASK 2110 - SKROSS WORLD ADAPTER MUV USB (AC)

SKROSS® The compact World Adapter MUV USB (AC) is an all-rounder with USB and USB Type C port that are perfect for travellers from all over the world that mainly travel with USB charged devices. The two USB ports (USB & USB C) enable to charge two USB devices at the same time while the adapter can be used with an unearthed device at the same time. Applicable worldwide: USA, China, Europe, India, Middle East and in more than 200+ other destinations. Designed in Switzerland.

Print Technique : UV, PAD PRINTING

Product Size: 75 x 64 x 55 cm

Preferred Print Location : Front

Packing Details : 34.5 X 41 X 18 cm; 50 pcs / carton ; gw / nw : 9.5 kg / carton

Max Print Size : 35 x 30 mm



Scan Below QR
code to watch
product video



@MEMORI

- > Type-C Input
- > World Travel Adapter With 5000 mAh Powerbank
- > Includes US/EU/UK/AUS Plugs
- > High Density Li-Polymer Battery
- > Travel Adapter With 2 USB Outputs



ITTA 1120 - BRUSY

@MEMORI Brusy is a Universal World Travel Adapter with a detachable 5000mAh Powerbank. The adapter has 2 USB outputs to charge 2 devices simultaneously & is compatible with over 150 countries with US/EU/UK/ AUS plugs. Just push the knob of the plug you want to charge & your device will charge safely in almost any part of the world. Attached to the Universal travel adapter is a 5000mAh detachable Powerbank which is equipped with high density Li-Polymer battery that safely charges almost any of your electronic devices very quickly. Input /Output : 5V/2A.

Print Technique : UV

Preferred Print Location : Front

Max Print Size : 70 X 40 mm

Product Size : 9 x 5.5 x 5.5 cm

Packing Details : 61.7 x 23.7 x 8.1 cm ; 14pc /carton; gw/nw: 4.90 kg / carton

READY STOCK

SKROSS®
TRAVEL



- > Premium luggage scale from Skross - Swiss Design
- > High precision strain gauge - 40kgs capacity
- > LCD display with kgs and lbs option
- > Includes 1 year brand warranty



ITSK 1184 - SKROSS

SKROSS® Skross Luggage Scale is a premium luggage scale with a LCD screen. Designed in Switzerland with a high precision strain gauge up to capacity of 40kg. Equipped with data lock function, overload indicator, low battery indication and auto-zero/auto-off function. Unit measurements are kg and lb. Includes 1 year brand warranty.

Packed in a gift box

Print Technique : SC, UV

Preferred Print Location : Top, Bottom

Max Print Size : 40 x 5 mm

Product Size : 9.5 x 3 x 5.3 cm (Without Strap Attachment)

Packing Details : 50 x 30 x 35 cm ; 60 pcs / carton; gw/nw: 7.8/7.2 kg / carton



Giftology



- > The perfect luggage tag for all travel wanderers!
- > Made of ABS

TAGL 2113 - GORIS

Giftology Never miss your luggage ever again with this highly durable and stylish luggage tag - perfect for all travel wanderers. Comes in black color.

Print Technique : SC, UV Preferred Print Location : Front

Max Print Size : 50 x 10mm Product Size : 7.2 x 4.3 x 0.8 cm

Packing Details : 20 x 23 x 23 cm ; 60 pcs / carton; gw/nw: 8/7 kg / carton

Giftology



All Black

White/Grey

- > 40kgs maximum capacity
- > Overload & low power indicator
- > Automatically switches off after 60 seconds

VEDI

TAGL 2114 - All Black TAGL 2115 - White/Grey

Giftology VEDI is a digital luggage scale with maximum capacity of 40kgs, overload & low power indicator, and automatically switches off after 60 seconds. Available in two colors.

Print Technique : SC, UV Preferred Print Location : Front

Max Print Size : 20 x 25mm Product Size : 11.5 x 3.7 x 2.7 cm

Packing Details : 31.5 x 25.5 x 27 cm ; 60 pcs / carton; gw/nw: 10/9 kg / carton

READY STOCK



@MEMORI

- > 50kgs maximum capacity
- > Overload & low power indicator
- > Automatically switches off after 60 seconds
- > Different options for units of measure such as kg / g / lb / oz.



TAMM 2118 - CASORIA

@MEMORI Casoria is a digital luggage scale with maximum capacity of 50kgs, overload & low power indicator, division 0.01kg/10g/0.02lb/1oz, and automatically switches off after 60 seconds. It has different options for units of measure such as kg / g / lb / oz.

Print Technique : SC, UV, UV DECAL Preferred Print Location: Front

Max Print Size : 40 x 15mm Product Size : 13 x 3 x 5 cm

Packing Details : 29.5 x 22 x 29 cm; 60 pcs /carton ; gw/nw: 10/9 kg / carton

SANTHOME



- > Set Consisting Of Neck Pillow & Eye Mask
- > Foldable Design For Easy & Compact Carry
- > Comfort Lifestyle Product



TASN 101- ZABARI

SANTHOME Prevent neck, shoulder and head complaints with this microbead neck pillow. The U-shape of this super soft neck pillow guarantees optimal support for your neck, shoulders and head during long or short trips. Also included is an eye mask for a good sleep. Neck Pillow & Eye Mask fold inside a compact, easy to carry pouch.

Print Technique : SC, HT Preferred Print Location : Pouch

Max Print Size : 70 x 90 mm Product Size : 15 x ø16 cm

Packing Details : 34 x 46 x 45 cm ; 24 pcs /carton ; gw/nw: 8.9 kg / carton



- > Lightweight and durable
- > Includes two key cards - one credit card size and one mini key ring size
- > Easiest way to secure your luggage



TASK 2126 - SKROSS

SKROSS TRAVEL Skross Cardkey TSA Lock is a lightweight lock that uses credit card and key ring sized keycards to keep your things secured. It includes two key cards - one credit card size and one mini key ring size - and is made durable with zinc-alloyed construction. It is the easiest way to secure your luggage!

(On Lock) Print Technique: SC, UV DECAL Preferred Print Location: On Lock Max Print Size: 20 x 10 mm

(On Wallet Card) Print Technique: SC, UV Preferred Print Location: On Wallet Card Max Print Size: 60 x 30 mm

(On Keyring Card) Print Technique: SC, UV Preferred Print Location: On Keyring Card Max Print Size: 35 x 10 mm

Packing Details : 57 x 31 x 35 cm; 100 pcs /carton; gw/nw: 13.8/13 kg / carton

READY STOCK



- > Premium Travel Wallet
- > Swiss Design
- > Made with faux leather
- > Secure storage for traveling executives



Blue



Black

SKROSS AMBASSADOR

TASK 2129 - Black TASK 2130 - Blue

SKROSS TRAVEL Skross Ambassador RFID-safe Passport Wallet is a premium faux leather travel wallet to hold your passport with 6 additional card slots, 3 SIM slots, zipper compartment, pen loop and a secure magnetic clasp. Designed in Switzerland by SKROSS - a global travel brand. Includes 1 year brand warranty. Packed in a premium gift box.

(Wallet) Print Technique: SC, ENG, DEBOSS

Preferred Print Location: Front

Max Print Size: 50 x 20 mm

(On Box) Print Technique: SC, UV

Preferred Print Location: Box

Max Print Size: 140 x 100 mm

Product Size: 14.7 X 11 X 2 cm

Packing Details : 48 X 31.5 X 34 cm; 72 pcs /carton ; gw/nw: 13.4kg / carton



TRAVEL ACCESSORIES



- Waterproof Phone Pouch with Floating Double Airbags
- Meant for safely carrying your phone and valuables into swimming pools / water parks
- Waterproof grade is IPX8
- Maximum depth is 30M

TAMP 9113 - NIBE

Nibe is a floating, waterproof phone pouch with a double airbag that is made of TPU and ABS. The waterproof grade is IPX8, the maximum depth is 30M. Protect your phone and other essentials when you are at a water park, swimming pool or beach without fear.

Print Technique: SC, Preferred Print Location: Front Max Print Size: 120 x 60mm
Product Size: 21.4 X 11.5 X 0.7 cm Packing Details : 38 x 29 x 33 cm; 48 pcs /carton; gw/nw: 4.1/3.8 kg / carton

READY STOCK

- Perfect for those who are always out and about!
- Comes with multiple spacious, functional pockets
- With a highly durable bag strap

SANTHOME



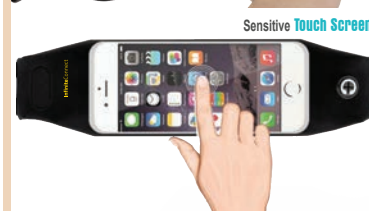
MBSN 9515 - LUBIN

SANTHOME This messenger bag is the perfect companion for anyone who's always out and about! It comes in black color and has multiple spacious pockets to store your belongings - two outside front pockets, one back pocket, and a small zipped pocket in the main compartment.

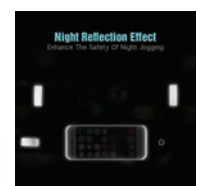
Print Technique : SC Preferred Print Location : Front, Back
Max Print Size : (Front) 90 x 90 mm (Back) 140 x 140 mm Product Size : 20.5 x 6 x 24 cm
Packing Details : 60 X 53 X 39 cm; 52 pcs/carton; gw/nw: 13.8/12.6 kg/carton



Sweatproof Waterproof Waist Pouch Spandex Material



Sensitive Touch Screen



Night Reflection Effect
Enhances The Safety Of Night Jogging

Black



Grey



WNWB 201 - Black WNWB 202 - Grey

WBSIN Slim and lightweight waist pouch for your smartphone and for other useful things needed during sports activities. It has an adjustable belt, reflective tape around the zipper, an output for headphones and touch frontal part for devices. It is suitable for smartphones up to 5".

Print Technique : SC Preferred Print Location : Front Left
Max Print Size : 20 x 35 mm Product Size : 27.5 x 9.5 x 1.5 cm
Packing Details : 108.5 X 26 X 31.5 cm; 100 pcs/carton; gw/nw: 11kg/carton



- Compatible with all wireless charging smartphones due to included magnetic ring
- Made with powerful N52 magnets
- Multi-tasking and productivity enhancements possible
- 15W Fast Wireless Charging while phone is mounted

READY STOCK

ITGS 1115 - DABIE

@MEMORI This 2-in-1 kit consisting of a metal phone or tablet mount for your laptop and a matching 15W universal magnetic wireless charger that can charge any wireless compatible smartphone, while it is mounted alongside your laptop. Both items are made from CNC polished aluminum with N52 magnets inside. The universal magnetic wireless charger comes with an extra magnetic ring that can be attached to any wireless charging smartphone, effectively converting them into a magnetic charging compatible device. You can now benefit from hands-free phone/tablet accessibility, convenient use of dual screens and fast universal wireless charging - all at the same time. This kit will help boost your productivity while working, studying, or on the go.

Print Technique : UV, SC, ENG Max Print Size : 65 X 23 mm or ø32 mm Preferred Print Location : Back
Product Size : 12.5 x 3.5 x 0.6 cm



MANICURE / GROOMING SET



Premium quality manicure / grooming instruments set

Contains 7 gold-plated stainless steel instruments

Made in Korea

GSMS 9105 - CHELLES

CHELLES Manicure Set is a world leading quality manicure / grooming set by THREE SEVEN with 7 gold plated instruments, including nail clipper, tweezer, diagonal clipper, beauty scissors, file, V-shaped push stick and ear pick. Made in Korea.

Print Technique : UV, SC

Preferred Print Location : Front

Max Print Size : 85 X 72 mm

Product Size : 10.2 x 7.7 x 1.7 cm

READY STOCK



Premium quality manicure instruments set

Contains 4 chrome-plated stainless steel instruments

Made in Korea

GSMS 9106 - GLINA

GLINA Manicure Set is a world leading quality manicure / grooming set by THREE SEVEN with 4 chrome plated instruments, including nail clipper, tweezer, beauty scissors, file. Made in Korea.

Print Technique : UV, SC

Preferred Print Location : Front

Max Print Size : 110 X 54 mm

Product Size : 12 x 4.6 x 2.2 cm



Smart watch / Earpod
charging

Mobile Phone Charging

Multi Cable Set

- > Exclusive Multipurpose Travel and Desk Accessory
- > Foldable Dual Wireless Charger for smart phones and smartwatch / earpods
- > Multi-Cable Set includes all your essential charging connections

READY STOCK



Type C Cable

Ejector Pin
USB Connector

Micro Connector

Lightning Connector



BOLERO

ITWC 1154 - White ITWC 1175 - Black

@MEMORI Bolero is a unique design of foldable dual wireless charger and in-built multi-cable set. The dual chargers provide 15W magnetic wireless charging for mobile phones and 3W wireless charging for compatible wireless charging Smart Watches or Bluetooth Earpods. Additionally, the multi-cable set includes USB, Micro, Type-C and Lightning connections with an ejector pin and SIM card slots for all your essential travel requirements. Portable and packed in a gift box.

Print Technique : UV, SC

Product Size : 6.7 X 2.7 X 9 cm

Preferred Print Location : Top, Back

Max Print Size : 50 x 50 mm

Packing Details : 50 x 37 x 60 cm; 50 pcs /carton; gw/nw: 6/5 kg / carton



RECYCLED PLASTIC CABLE SET



Convenient Phone/Tablet Stand



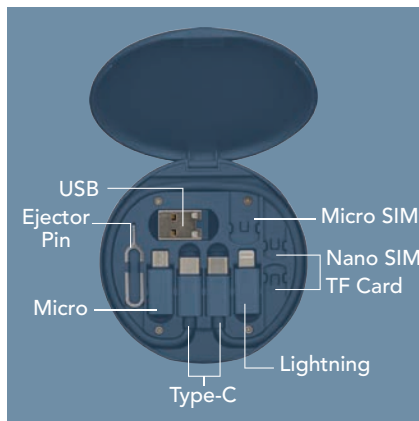
Includes Ejector Pin + 3 Sim Card Slots



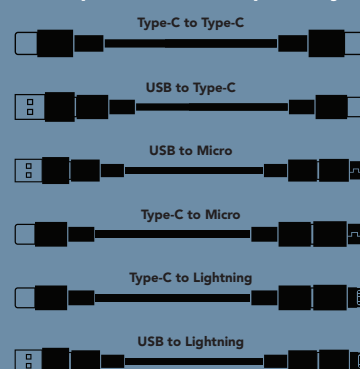
Compact & Portable



READY STOCK



Complete device compatibility



- > Sleek Travel-Friendly Cable Case
- > Made from Recycled Claim Standard (RCS) Plastic, certified by Intertek
- > Magnetic Closing
- > Convenient Mobile Holder attachment

TAVIRA

MTST 1126 - Black MTST 1127 - White MTST 1128 - Blue

MEMORii Multi-cable set with charging cables for all your essential connections: Type C, Lightning, micro USB and USB. Also comes with storage space for ejector pin and 3 slots of micro SIM, nano SIM and TF SIM cards. Tavira is made from RCS-certified recycled plastic and carries all your essential technology accessories in a compact travel size case. It can also serve as a phone or tablet stand for added on-the-go convenience. A great giveaway idea for your customers to remember you by!

Print Technique : SC, UV
Product Size : ø8.4 x 1 cm

Max Print Size : ø75 mm

Preferred Print Location : Top



READY STOCK



Black



White



Blue

- > Sleek travel multi-cable + accessories set
- > With 15W Wireless Charger on the back
- > Made from RCS-certified recycled plastic
- > Elegant magnetic closing
- > Includes ejector pin + 3 SIM slots



OSLO

ITWC 1169 - Black ITWC 1170 - White ITWC 1171 - Blue

@MEMORII Oslo is a travel multi-cable and accessories set with 15W wireless charging. It's made from RCS-certified recycled ABS plastic. Includes all essential connectors: Type C, Lightning, micro USB and USB-A. Also includes an ejector pin + 3 SIM card slots. Premium magnetic closure. Packed in recycled kraft box

Print Technique : SC, UV
Product Size : ø8.3 X 1 cm

Preferred Print Location : Top Max Print Size : ø60 mm
Packing Details : 44.2 x 17.6 x 18 cm; 100 pcs /carton ; gw/nw: 8/7.5 kg / carton



High Quality

Regal Velvet Carry Pouch

PMSN 9103 - SAJADA

The faithfuls concentrate on their prayer and spiritual connection. Sajada mat provides a comfortable experience to make it easier to focus. Folding into an elegant velvet pouch, the Sajada mat is made with natural rubber with soft suede finish and is purpose-built for all situations-use it at home, outside and during travel. Designed to help a seeker with their inward journey.

Print Technique : SC

Preferred Print Location : Front & Back of Pouch

Max Print Size : 220 x 160 mm

Product Size: 107 X 68 cm

READY STOCK



High Quality

Regal Velvet Carry Pouch

PMSN 9104 - SAJADA

The faithfuls concentrate on their prayer and spiritual connection. Sajada mat provides a comfortable experience to make it easier to focus. Folding into an elegant velvet pouch, the Sajada mat is made with natural rubber with soft suede finish and is purpose-built for all situations-use it at home, outside and during travel. Designed to help a seeker with their inward journey.

Print Technique : SC

Preferred Print Location : Front & Back of Pouch

Max Print Size : 220 x 160 mm

Product Size: 107 X 68 cm



**Water
Resistant
Fabric**

- Travel Wallet + Business Card Organizer
- Contains 13 different card pockets
- Swiss Design by SKROSS
- Perfect trade show / executive gift!



TASK 2128 - SKROSS

SKROSS TRAVEL Skross Travel Card Wallet is a perfect gift for executives at trade shows. With 13 different organizer pockets to organize business cards + your own travel belongings. Includes a secure metal button closure. It has a luxury micro leather water resistant fabric. Slip in currencies or coins in one of the pockets to fully replace your wallet as well. Includes 1 year brand warranty. Swiss Design by SKROSS. Packed in a Skross gift box.

Print Technique: SC, HT

Preferred Print Location: Front, Back

Max Print Size: (Front) 30 x 40 mm (Back) 60 x 50 mm

Product Size: 11 X 8.5 X 3 cm

Packing Details : 53 x 49 x 52 cm; 200 pcs /carton ; gw/nw: 23/22 kg / carton

READY STOCK



- Premium micro-leather travel pouch
- Flexible velcro compartments that adjust to the items inside
- Zipped mesh pocket for passport



HPSK 2134 - SKROSS

SKROSS TRAVEL Skross Travel Accessories Pouch is made to keep all your tech and other travel essentials neatly organized. Avoid the clutter with its flexible compartments in varying sizes and an extra zipped mesh inside pocket. It has a zip closure and a top handle so you can carry it conveniently. Includes 1 year brand warranty. Perfect to pair with a Skross powerbank, cable and travel adaptor to make this a perfect travel gift pack. Swiss Design by SKROSS

Print Technique: SC, HT

Preferred Print Location: Front, Back

Max Print Size: 100 x 150 mm

Product Size: 23 X 17.5 X 7 cm

Packing Details : 53 x 47 x 36 cm; 30 pcs /carton ; gw/nw: 13.2/11.8 kg / carton



CHANGE.
SERIOUS SUSTAINABILITY

RPET ACCESSORIES POUCHES **SANTHOME**



- > High end - Sustainable Travel accessory
- > Made from GRS-Certified Recycled Fabric
- > This Bag saved 10 litres of water
- > This Bag is made by recycling 4 plastic bottles

HPSN 551 - TRIKOMO

SANTHOME CHANGE Wash Bag / Toiletries Pouch - made with high-end durable 1680D recycled rPET (certified by GRS) and stylish leather components. Get your essentials organized while supporting Water.org to provide safe water to people in need with each purchase. Each bag saves 10L of water and reuses 4 plastic bottles

Print Technique : SC Preferred Print Location : Front Max Print Size : 110 x 50 mm

Product size : 23 X 14 X 10.5 cm

SAY NO TO GREENWASHING

Tell the true story of sustainability with genuine recycled rPET

Certified by



GIFTS THAT GIVE BACK

785 million people - 1 in 9 - lack access to safe water. We are supporting Water.org to change this.

For each CHANGE bag sold, **3% of sales is donated** by brand owners to Water.org to save lives with safe water and sanitation.



CHANGE.
SERIOUS SUSTAINABILITY



- > High end - Sustainable Travel accessory
- > Made from GRS-Certified Recycled Fabric
- > This Bag saved 9 litres of water
- > This Bag is made by recycling 4 plastic bottles



HPSN 552 - POMOS

SANTHOME CHANGE Technology Accessories Kit - made with high-end durable 1680D recycled rPET (certified by GRS) and stylish leather components. Organizes all tech accessories (like cables, chargers, power banks, adapters, etc.). Great for office or travel. Each bag saves 9L of water and reuses 4 plastic bottles, while supporting Water.org to provide safe water to people in need with each purchase.

Print Technique : SC

Preferred Print Location : Front

Max Print Size : 120 x 100 mm

Product size : 27 X 16 X 7 cm

READY STOCK



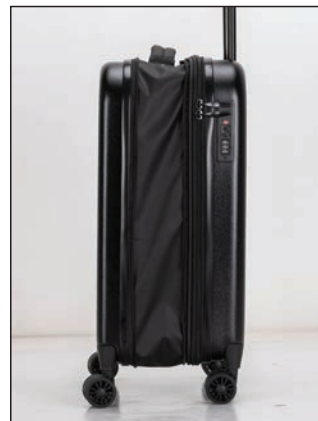
OPEN



FOLDED

READY STOCK

- > Designed to Inspire!
- > Made of ABS with black matte finish
- > ALU trolley system; double spin wheels with metal bearing
- > TSA lock and elegant black zipper pullers
- > Waterproof fabric protects content in snow and rainy times
- > Foldable & Stackable Conveniently



TBSN 2139 - ROSTOCK

SANTHOME Rostock is a foldable cabin trolley bag in elegant exterior design made of ABS with black matte finish. It has an ALU trolley system with a push button and double spin wheels with metal bearing. Your belongings are secure with its TSA lock, wheels in TPE material, waterproof exterior fabric with two zippers. The trolley has a black zipper puller closure and top side with fabric handle. The inside has a 210D full black color lining without foam, two cloth webbing with buckle, and two foldable baffle. This is your ultimate travel companion! Zip it up to compress it when stacked away.

Print Technique: SC, UV DECAL
Product Size: 56 X 36 X 14 cm

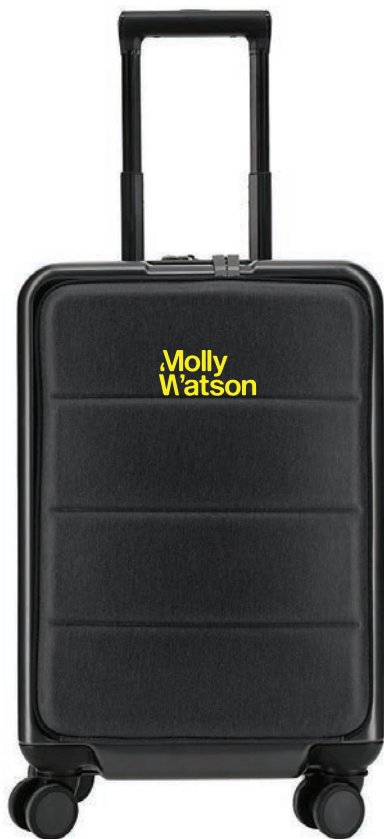
Preferred Print Location: Front, Back
Packing Details : 36 x 14.5 x 56 cm; 1 pcs /carton ; gw/nw: 3.3/2.8 kg / carton

Max Print Size: 250 x 350 mm



PREMIUM CABIN TROLLEY & TRAVEL GARMENT BAG

SANTHOME



TSA Lock For Compartments



Quick Access Front Pocket



Scan Below QR
code to watch
product video



- > 20" Cabin Trolley With 17" Laptop Compartment
- > External USB Charging Port
- > Twin TSA Lock For Both Main Compartment & Front Pocket
- > Quick Access Front Pocket
- > Sturdy Double Spin Wheels

TBSN 104- CASHEL

SANTHOME Cashel is a 20" Overnighter trolley bag with Iron Trolley System, Double Spin wheels, Dual TSA lock (one for main compartment and second for the front pocket), USB external charging port on the outside and a laptop compartment. Now go on your business trips in style and comfort with this lavish looking trolley bag.

Print Technique : SC

Product Size: 55 X 35 X 23.50 cm

Preferred Print Location : Front flap

Max Print Size : 100 X 40 mm

Packing Details : 57.5 x 37 x 23 cm ; 1 pcs /carton ; gw/nw: 3.66 kg / carton

READY STOCK



by Tonino Lamborghini



MARTONE -98185

Tonino Lamborghini An easier way to arrive fresh and pressed. Lightweight and fully stocked with multiple organizational features, this garment bag uses a locking hanger clamp system that keeps clothes wrinkle free and is built with handles that fasten together for even easier carrier.

Print Technique : SC, HT

Preferred Print Location : Front

Max Print Size: 100 x 30 mm

Product Size : 52 x 38 x 16 cm

Packing Details : 57.2 x 40.3 x 57.8 cm ; 6 pcs /carton ; gw/nw: 12.8 kg / carton



Silver

Black

- > Hard case cabin trolley with silent double 4-wheel system
- > Includes an inbuilt combination lock
- > Ultra-Soft comfort handles for easy lifting / stowing luggage
- > Logo Customization on Metal Plate



GENOVA

TBGL 2132 - Black TBGL 2133 - Silver

Genova is a hard case ABS cabin trolley bag equipped with a silent double 4-wheel and an ultra-soft handle. It is also installed with a combination lock with grey inner lining and an X-belt inside to hold items in place. Great value trolley!

Print Technique: SC, UV, ENG, Epoxy

Preferred Print Location: Front Plate

Max Print Size: 45 x 20mm

Product Size: 38 X 24 X 56 cm



OVERNIGHT BUSINESS TROLLEY



READY STOCK



Business / Executive Trolley made with resilient 1680D nylon

15.6" padded laptop compartment

Premium 4-stage trolley system

4 spinner wheels

Overnight compartment

Swiss Design

Includes 1 year brand warranty



TBSK 2138 - SKROSS

SKROSS TRAVEL Skross Travel Overnight Business Trolley is made of resilient nylon 1680D material. The 15.6" padded laptop compartment, 4-stage trolley system, 4 spinner wheels, and an overnight compartment makes it a travel staple for business trips. Includes 1 year brand warranty. Swiss Design by SKROSS.

Print Technique: SC

Preferred Print Location: Front

Max Print Size: 200 x 80 mm

Product Size: 42 X 22 X 35 cm

Packing Details : 66 x 41 x 44 cm; 3 pcs /carton ; gw/nw: 7/6.6 kg / carton



- > 17" Laptop Compartment
- > Well Balanced 4 Wheel Trolley System
- > Perfect For Overnight Business Trips

TBSN 103 - LAPOVO

SANTHOME All your documents will pack securely in this business trolley. Papers and laptop(upto 17") can be neatly placed in one of the compartments, some of which can be locked. Also a perfect trolley for short business trips. With 4 wheel trolley system for stability on your way.

Print Technique : SC, HT

Preferred Print Location : Front flap

Max Print Size : 30 x 100 mm

Product Size : 44 x 43 x 23 cm

Packing Details : 60 X 44 X 43.5 cm ; 3 pcs / carton ; gw / nw : 9.4 kg / carton

READY STOCK



Santhome Zipper Pullers



TBSN 101 - CARYONN

SANTHOME 17", 4 wheel Trolley bag made from high quality and durable, dual tone cationic fabric. The luggage is designed to fit in most airlines overhead compartments. Foam center garment panels gently blanket clothes to minimize wrinkling. Compact, rugged and exceptionally manoeuvrable, this trolley has multiple exterior pockets to keep boarding passes, magazines and a water bottle close at hand. Four 360° spinner wheels and a three-stage aluminum handle let you glide through the airport and down the aisle without a hitch.

Print Technique : SC, HT

Preferred Print Location : Front Top

Max Print Size : 100 x 30 mm

Product Size : 43 x 36 x 20 cm

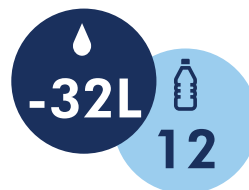
Packing Details : 72 x 43 x 40.5 cm ; 3 pcs / carton ; gw/nw : 11 kg / carton



CHANGE.
SERIOUS SUSTAINABILITY

RPET LAPTOP /
OFFICE BAG

SANTHOME



READY STOCK

- Made from Recycled PET fabric certified by Global Recycled Standards
- 3% of sales proceeds of each product is committed to Water.org
- This bag saved 32 liters of water
- Back trolley strap to attach backpack to trolley bag
- This Bag is made by recycling 12 plastic bottles



SAY NO TO GREENWASHING

Tell the true story of sustainability with genuine recycled rPET

Certified by



GIFTS THAT GIVE BACK

- 💧 785 million people - 1 in 9 - lack access to safe water. We are supporting Water.org to change this.
- 💧 For each CHANGE bag sold, **3% of sales is donated** by brand owners to Water.org to save lives with safe water and sanitation.



CHANGE.
SERIOUS SUSTAINABILITY

MBSN 972 - OIKOS

SANTHOME CHANGE Laptop Office Bag made from high-end durable 1680D recycled rPET (certified by GRS) and stylish leather components. Convenience pockets in the front for quick access of mobile phones, documents, etc. Each bag saves 32L of water, reuses 12 plastic bottles and makes an impact by supporting Water.org to provide safe water to people in need with each purchase.

Print Technique : SC

Preferred Print Location : Front

Max Print Size : 170 X 200 mm

Product size : 38 x 28 x 7 cm

Packing Details : 69 x 60 x 49 cm ; 6 pcs /carton ; gw/nw: 10.9 kg/ carton



SAY NO TO GREENWASHING

Tell the true story of sustainability with genuine recycled rPET and cotton with validated claims.

Certified by  Global Recycled Standard

GIFTS THAT GIVE BACK

💧 785 million people - 1 in 9 - lack access to safe water. We are supporting Water.org to change this.

💧 For each IMPACT bag sold, **2% of sales is donated** by the Xindao B.V. (Netherlands) to Water.org to save lives with safe water and sanitation.

 water.org®

IMPACT



READY STOCK

- > 2% of proceeds of each product donated to Water.org
- > This bag is made of 26 recycled bottles
- > Made with AWARE™ tracer
- > This bag saved 15 liters of water

MBAW 461 - Black MBAW 462 - Navy Blue

XD COLLECTION No greenwashing, but telling a true story about sustainability! This Impact collection is made with AWARE™ tracer. With AWARE™, the use of genuine recycled fabric materials and water reduction impact claims are guaranteed, by using the AWARE disruptive physical tracer and blockchain technology. Save water and use genuine recycled fabrics. If you choose this item you save 15 litres of water and 26 plastic bottles have been reused. With the focus on water, 2% of proceeds of each Impact product sold is donated to Water.org. Casually professional and organised, the Impact 15.6" laptop bag is made for the modern professional with an eye for value and the environment. It features a classic design with front accent stitching, multiple storage pockets, two top handles, and an adjustable, detachable shoulder strap. The outer fabric and inner lining consist of 100% recycled polyester with AWARE™ tracer. PVC free.

Print Technique : SC

Preferred Print Location : Front

Max Print Size : 180 x 30 mm

Product Size : 28 x 6 x 39.5 cm

Packing Details : 49.5 X 38.5 X 48.5 cms ; 12 pcs / carton ; gw / nw : 5.5 kg / carton



READY STOCK

- > Duo-tone fabric laptop bag
- > Holds up to 15" laptops
- > Sleek and fashion look



MBSN 2101 - GALDAR

SANTHOME Trendy duo-tone 15" laptop office bag made with duo-tone fabric and PU leather combination. Contains shoulder strap inside. Sleek look

Print Technique : SC

Preferred Print Location : Front

Max Print Size : 120 x 100 mm

Product Size: 38 x 29 x 6.5 cm



- > Modern and elegant office faux leather briefcase
- > 15.6" padded laptop compartment
- > Stylish front pocket for easy access
- > Zippered back pocket



MBSN 2102 - TRANAS

SANTHOME Santhome® Tranas is modern elegance exemplified. Santhome® Tranas Premium Faux Leather Office Laptop Bag and Document Case with 15.6" padded laptop compartment, strong handles, stylish front pocket for easy access and a zippered back pocket.

Print Technique : UV, SC, ENG

Preferred Print Location : Below Zip

Max Print Size : 250 x 140 mm

Product Size: 41 x 30 x 10 cm

READY STOCK



- > 15.6" Laptop Compartment
- > Light Weight For Daily Use
- > Trolley Strap On Back

MBSN 808- KAVARNA

SANTHOME Slim, compact case with large main compartment perfect to carry laptops upto 15.6" without making it bulky. Front zippered pocket for storage of other gear. Beautiful bold padded double handles. Back strap allows for the bag to be securely attached to a trolley.

Print Technique : SC, ENG

Preferred Print Location : Front

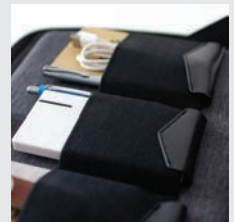
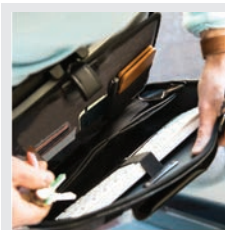
Max Print Size : 100 x 120 mm

Product Size: 38 x 7.5 x 30 cm

Packing Details : 65 X 45 X 41cm ; 6 pcs /carton ; gw/nw: 8.60kg / carton

BEST IN CLASS BY **SANTHOME****Features to note:**

- Create your work station anywhere
- Water-proof exterior coating
- Adjustable screen height up to 19 cm
- Shock resistant case to protect your laptop
- Admirable interior fabrics
- Quick-stash charger pocket
- Eye-level video conferencing
- Ergonomic Design

**MBSN 810 - EVRY**

SANTHOME Want to simply work on the go without hassle and have fast and easy pack up? Evry puts an end to the nasty neck pain laptops create and provides an incredible function that lets you view your laptop at your desired angle of view.

Print Technique : UV, ENG

Preferred Print Location : Plate

Max Print Size : 40 x 25 mm

Product size : 43 X 32 X 12 cm

Packing Details : 62 x 32 x 45 cm ; 5 pcs /carton ; gw/nw: 8.35 / 10 kg / carton

READY STOCK

Scan Below **QR**
code to watch
product video

**MBSN 807- RONDE**

SANTHOME Ronde is a daily use messenger bag with Three-Dimensional Tailoring and made from water-resistant and wear resistant premium fabric. The main compartment can store upto 15.6 inch laptop and 11 inch tablet is designed with full open zipper to increase the practicability of storage. External USB output allows for your phone to be charged outside even when your powerbank is placed inside the bag. Mesh back pads and shoulder straps provide comfort and breathability.

Print Technique : SC

Preferred Print Location : Front

Max Print Size : 150 x 150 mm

Product Size : 40 x 11 x 31 cm

Packing Details : 57 X 35 X 44 cm ; 10pcs / carton ; gw / nw : 7.6 kg / carton



Light Grey



Black



READY STOCK

- > Built for modern professionals
- > Flexible design to carry small or bulky loads
- > With 4 well organized outer pockets & 2 inner compartments
- > Laptop messenger bag that doubles as a shopping bag

LORETTO

MBSN 2111 - Light Grey MBSN 2112 - Black

SANTHOME Flexible by design, the Santhome Loretto Professional is a functional, work-ready and aesthetically styled laptop messenger bag with multiple pockets and compartments to keep your tech accessories, work supplies and everyday carry easily accessible. Unique adaptable design with a large main compartment that stays slim for smaller loads but converts into a shopping bag accommodating larger loads or bulky items.

Print Technique : SC, HT Print Location : Front , Back Max Print Size : (Front) 100 x 100 mm , (Back) 250 x 150 mm
Product Size : 32 x 9 x 25 cm Packing Details : 60 X 40 X 40 cm; 24 pcs/carton; gw/nw: 15.5/14.3 kgs /carton



OFFICE BAGS & MESSENGER BAGS

MOLESKINE®

External Features:

- Webbing to keep the bag securely attached to luggage handles
- Front pocket with zipper for easy access
- Made of water-repellent nylon and durable coated canvas Zipper with Moleskine logo



READY STOCK

MBMOL 102 - Slate Grey

MOLESKINE® An essential part of your urban nomadic kit: a practical, smart bag to carry your unique contents and tools as you move around the city. Bag can go everywhere with you, to work or around town. Essential equipment for the urban nomad. Follow your own track. Write your own story

Print Technique : SC

Preferred Print Location : Flap

Max Print Size : 250 x 80 mm

Product size : 39.1 X 13.1 X 28.1 cm

Packing Details : 57 X 43 X 34 cm ; 4 pcs/carton ; gw/nw: 6.2 kg / carton

Giftology



Navy Blue

➤ Lightweight & Durable Messenger Bag



Black

KRIENS

MBGL 205 - Black MBGL 206 - Navy Blue

Giftology Messenger bag made from 600 D polyester. Consists of one main compartment, one large quick access compartment on the front and adjustable shoulder straps. There is also a compartment on the side to keep your bottle.

Print Technique : SC, HT

Preferred Print Location : Front

Max Print Size : 270 x 240 mm

Product Size : 37 x 30 x 11.5 cm

Packing Details : 45 x 35 x 38 cm ; 30 pcs/carton ; gw/nw: 13 kg/carton



CROSS.

CROSS LAPTOP BAG



Black



Brown

READY STOCK

- > Office Laptop Bag from Premium Vegan Leather
- > Elegant Design
- > Shoulder strap-on the go



FRANCISCO

MBCRS 881 - Black **MBCRS 887** - Brown

Francisco is a 15" CROSS laptop briefcase made from a durable and rich quality Vegan leather with durable polydrill lining. It comes with a removable & adjustable shoulder strap. The bag has classy distressed vintage inspired look which never goes out of style.

Print Technique : SC, ENG

Preferred Print Location : Front Bottom

Max Print Size : 35 X 60 mm

Product Size : 40 x 30 x 7 cm

**IMPACT**AWARE™ RPET WEEKEND
DUFFLE BAG

XD COLLECTION

SAY NO TO GREENWASHING

Tell the true story of sustainability with genuine recycled rPET and cotton with validated claims.

Certified by**GIFTS THAT GIVE BACK**

785 million people - 1 in 9 - lack access to safe water. We are supporting Water.org to change this.



For each IMPACT bag sold, **2% of sales is donated** by the Xindao B.V. (Netherlands) to Water.org to save lives with safe water and sanitation.

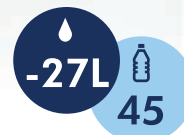
**IMPACT****READY STOCK**

2% of proceeds of each product committed to Water.org

This bag is made of 45 recycled bottles

Made with AWARE™ tracer

This bag saved 27 liters of water

**DBAW 457 - DUFFLE BAG**

XDDESIGN No greenwashing, but telling a true story about sustainability! This Impact collection is made with AWARE™ tracer. With AWARE™, the use of genuine recycled fabric materials and water reduction impact claims are guaranteed, by using the AWARE disruptive physical tracer and blockchain technology. Save water and use genuine recycled fabrics. If you choose this item you save 27 litres of water and 45 plastic bottles have been reused. With the focus on water, 2% of proceeds of each Impact product sold is donated to Water.org. The AWARE™ weekend duffle impresses with its modern and simple look. Its clean design makes the duffle ideal for travel. The roomy main compartment offers plenty of space for your essentials. Two mesh pockets make your smaller items easy to find. The front zipper pockets have 2 sleeve pockets and 2 pen loops. Interior and exterior 100% recycled polyester with AWARE™ tracer. PVC free.

Print Technique : SC

Preferred Print Location : Front

Max Print Size : 250 x 35 mm

Product Size : 32 x 22 x 55 cm

Packing Details : 43 X 36 X 59 cms ; 15 pcs / carton ; gw / nw : 11.5 kg / carton



- > Made from Recycled PET fabric certified by Global Recycled Standards
- > 3% of sales proceeds of each product is committed to Water.org
- > High-end Sustainable
- > This bag saved 43 liters of water
- > This Bag is made by recycling 17 plastic bottles



**GO directly to office from gym -
Go directly to gym from office**

**AN EXECUTIVE
Duffel Bag**

SAY NO TO GREENWASHING

***Tell the true story of
sustainability with genuine
recycled rPET***

Certified by



GIFTS THAT GIVE BACK

💧 785 million people - 1 in 9 - lack access to safe water. We are supporting Water.org to change this.

💧 For each CHANGE bag sold, **3% of sales is donated** by brand owners to Water.org to save lives with safe water and sanitation.



CHANGE.
SERIOUS SUSTAINABILITY

READY STOCK



DBSN 661 - PEGEIA

SANTHOME CHANGE Duffel / Weekender / Gym Bag made from high-end durable 1680D recycled rPET (certified by GRS) and stylish leather components. Includes special shoe compartment. Each bag saves 43L of water and reuses 17 plastic bottles, while supporting Water.org to provide safe water to people in need with each purchase.

Print Technique : SC, HT

Preferred Print Location : Pocket

Max Print Size : 100 X 200 mm

Product size : 54 x 26 x 25 cm



READY STOCK

- Built for the urban spirit
- Very practical, daily backpack
- Protective 15.6" laptop storage
- High strength handle
- Includes 1 year brand warranty
- Swiss Design

**BPSK 2127 - SKROSS**

SKROSS TRAVEL Skross Travel Laptop Backpack is built for the urban spirit - whether work, gym, or travel! Equipped with multi-function pockets, including a 15.6" protective laptop pocket, and features like high strength handle and back trolley strap. Waterproof exterior material. Includes 1 year brand warranty. Swiss Design by SKROSS.

Print Technique: SC, ENG

Preferred Print Location: Top & Bottom

Max Print Size: (Top) 180 x 150 mm (Bottom) 180 x 100 mm

Product Size: 29.5 X 7 X 41.5 cm

Packing Details : 66 x 45 x 50 cm; 20 pcs /carton ; gw/nw: 17.1/15.7 kg / carton



READY STOCK



- > Premium backpack for executives
- > Includes 1 year brand warranty
- > Expandable side pocket for bottles / umbrella
- > Inside laptop pocket
- > With trolley strap
- > Swiss Design

BPSK 2137 - SKROSS

SKROSS® TRAVEL Skross Travel Executive Laptop Backpack is made of luxury saffiano PU leather with resilient 1680D. The inside laptop pocket, 2 separate zipped compartments, and an expandable side pocket makes it a very useful backpack on the go. It also has a durable trolley strap so you can slide it in to your trolley at the airport. Swiss Design by SKROSS

Print Technique: SC, ENG
Product Size: 40 X 30 X 11.5 cm

Preferred Print Location: Top, Bottom Max Print Size: (Top) 180 x 150 mm (Bottom) 180 x 100 mm
Packing Details : 67 x 33 x 44 cm; 5 pcs /carton ; gw/nw: 5.5/4.5 kg / carton



READY STOCK

- > Stylish Metro Sustainable Backpack
- > Perfect companion for your next work or leisure trip
- > Made from GRS-certified recycled polyester
- > Reuses 14 plastic bottles
- > 15.6" Laptop Compartment

**BPSN 2125 - MAINZ**

SANTHOME Mainz is a stylish new metro 15.6" laptop backpack, made from waterproof GRS-certified recycled polyester with faux leather. It comes with a delicate wrist strap and adjustable shoulder strap to keep you comfortable while on the go. There is an ergonomic front pocket and a convenient double zipper - making it easy for you to access your belongings. It also has a digital compartment for your laptop or tablet. Volume: 14L

Print Technique : SC, HT

Preferred Print Location : Top, Bottom

Max Print Size : (Top) 200 x 80 mm (Bottom) 160 x 140 mm

Product Size: 42 X 29 X 11 cm

Packing Details : 55 x 39 x 55 cm ; 15 pcs /carton ; gw/nw: 9.45/8.25 kg / carton



- > Made from Recycled PET fabric certified by Global Recycled Standards
- > 3% of sales proceeds of each product is committed to Water.org
- > This bag saved 35 liters of water
- > This Bag is made by recycling 14 plastic bottles
- > Expandable zipper adds additional storage
- > Back trolley strap to attach backpack to trolley bag

SAY NO TO GREENWASHING

Tell the true story of sustainability with genuine recycled rPET

Certified by



GIFTS THAT GIVE BACK

- 💧 785 million people - 1 in 9 - lack access to safe water. We are supporting Water.org to change this.
- 💧 For each CHANGE bag sold, **3% of sales is donated** by the brand owner to Water.org to save lives with safe water and sanitation.



CHANGE.
SERIOUS SUSTAINABILITY

READY STOCK



Excellent storage space



Trolley Strap for attaching to trolley bag



Expandable Zipper

BPSN 796 - MARGO

SANTHOME CHANGE Laptop Backpack made from high-end durable 1680 recycled rPET (certified by GRS) and stylish leather components. Elegant executive design. Extra zipper provided expandable storage space. Each bag saves 35L of water and reuses 14 plastic bottles, while supporting Water.org to provide safe water to people in need with each purchase.

Print Technique : SC, HT

Product size : 44 x 30 x 13 cm (Expanded) 44 x 30 x 17 cm

Preferred Print Location : Front Top & Bottom

Packing Details : 69 x 60 x 49 cm ; 6 pcs /carton ; gw/nw: 10.9 kg/ carton

Max Print Size : 100 X 130 mm

SANTHOME

CHANGE.

SERIOUS SUSTAINABILITY





-16L



6

SAY NO TO GREENWASHING

Tell the true story of sustainability with genuine recycled rPET

Certified by



GIFTS THAT GIVE BACK

785 million people - 1 in 9 - lack access to safe water. We are supporting Water.org to change this.

For each CHANGE bag sold, **3% of sales is donated** by the brand owner to Water.org to save lives with safe water and sanitation.



CHANGE.
SERIOUS SUSTAINABILITY

READY STOCK



Blue



Grey



- > Made from RPET fabric, certified by Global Recycled Standard (GRS)
- > Elegant slim design, perfect for commuters
- > 3% of sales proceeds of each product is committed to Water.org
- > Each bag has saved 16 liters of water
- >> Each bag is made reusing 6 plastic bottles



SANOK

BPSN 2103 - Black BPSN 2135 - Blue BPSN 2136 - Grey

SANTHOME CHANGE 15.6" Slim Commuter Laptop Backpack made from premium durable recycled PET (rPET), certified by the Global Recycled Standard (GRS). Elegant executive design and stylish fittings. Each bag saves 16L of water and reuses 6 plastic bottles, while supporting Water.org to provide safe water to people in need with each purchase.

Print Technique : SC, HT

Preferred Print Location : Front

Max Print Size : 160 x 150 mm

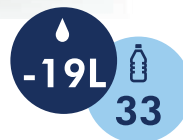
Product Size: 45 X 31 X 8 cm





READY STOCK

- > 2% of proceeds of each product donated to Water.org
- > This bag is made of 33 recycled bottles
- > Made with AWARE™ tracer
- > This bag saved 19 liters of water



SAY NO TO GREENWASHING

Tell the true story of sustainability with genuine recycled rPET and cotton with validated claims.

Certified by



GIFTS THAT GIVE BACK

- 785 million people - 1 in 9 - lack access to safe water. We are supporting Water.org to change this.
- For each IMPACT bag sold, **2% of sales is donated** by the Xindao B.V. (Netherlands) to Water.org to save lives with safe water and sanitation.



BGAW 458 - Black BGAW 459 - Anthracite BGAW 460 - Navy Blue

XD COLLECTION No greenwashing, but telling a true story about sustainability! This Impact collection is made with AWARE™ tracer. With AWARE™, the use of genuine recycled fabric materials and water reduction impact claims are guaranteed, by using the AWARE disruptive physical tracer and blockchain technology. Save water and use genuine recycled fabrics. If you choose this item you save 19 litres of water and 33 plastic bottles have been reused. With the focus on water, 2% of proceeds of each Impact product sold has been donated to Water.org. The streamlined AWARE™ 15.6" laptop backpack includes a laptop sleeve in the main compartment and an inside sleeve pocket with 2 pen loops. A separate front zipper pocket can hold your small daily essentials. Interior and exterior 100% recycled polyester with AWARE™ tracer . PVC free.

Print Technique : SC

Preferred Print Location : Front

Max Print Size: 180 X 40 mm

Product Size : 44.5 X 12 X 30.5 cm

Packing Details : 49.5 X 38.5 X 48.5 cm ; 12 pcs / carton ; gw / nw : 5.5 kg / carton



CONTACT DETAILS

Venkatraman N H

E: venkat@metaphormind.com
T: +971 50 278 8504

Sureshlal M S

E: suresh@metaphormind.com
T: +971 56 679 2605

FDBC1938, Compass Building, Al Shohada Road, Al Hamra Industrial Zone-FZ, Ras Al Khaimah, UAE