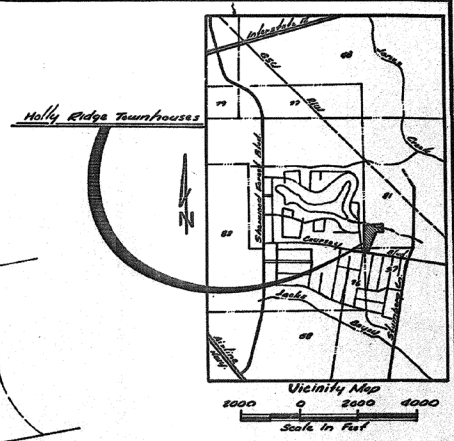
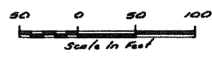


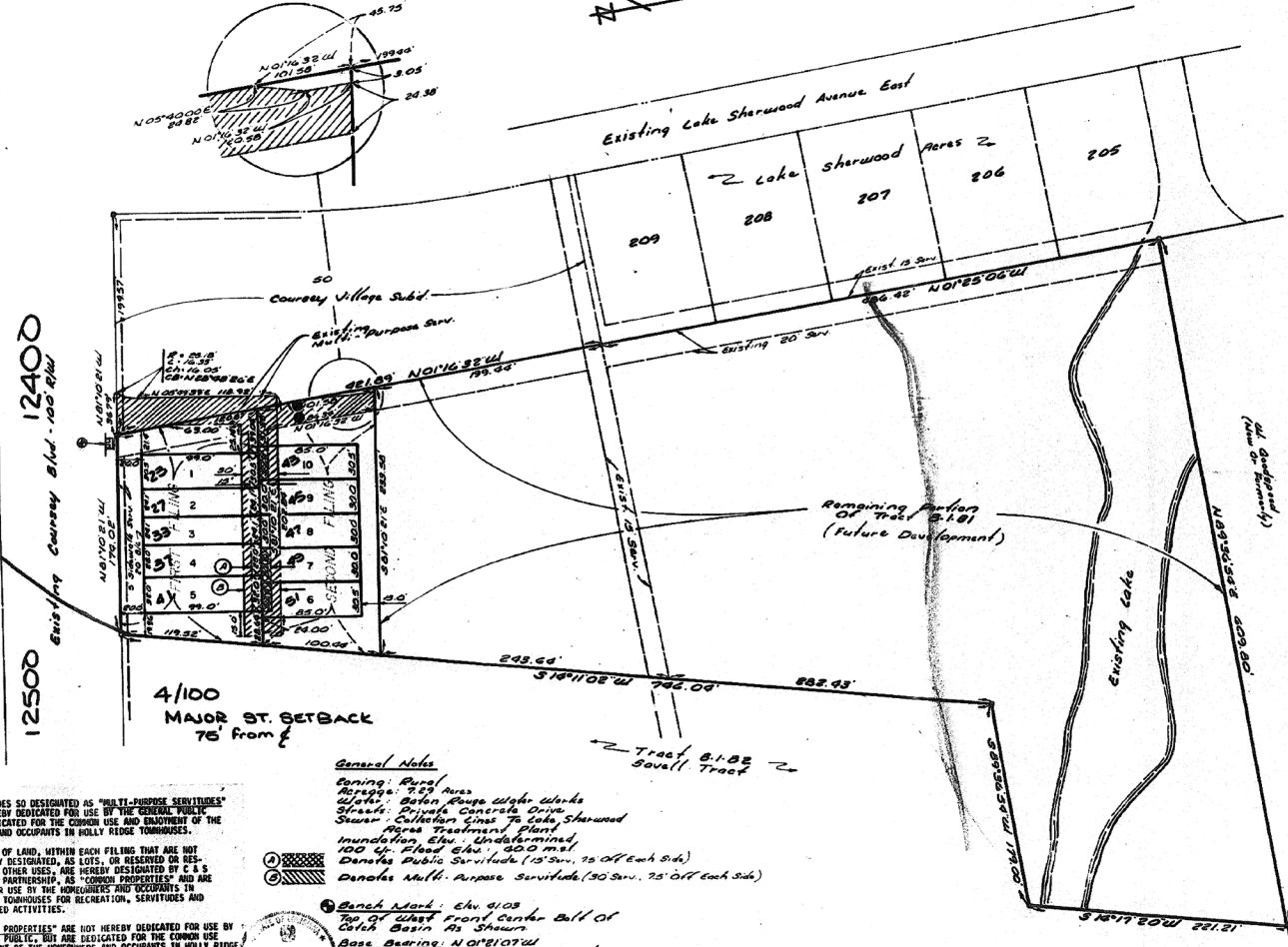
REVISIONS		
DATE/DESCRIPTION	REC. FOR APPROVAL DEPT. OF PUBLIC WORKS CITY OF BATON ROUGE AND PARISH OF EAST BATON ROUGE WILLIAM W. ADDISON, DIR.	APPROVED PLANNING COMMISSION CITY OF BATON ROUGE AND PARISH OF EAST BATON ROUGE ROBERT S. DOLESE, DIRECTOR
12-6-83 TO SHOW LIMITS OF FIRST FILING.		P. 18279 <i>Mark, [unclear]</i> DATE 12-7-83
2-8-84 TO CORRECT SEC. NO.		P. 18332 <i>Mark, [unclear]</i> DATE 2-10-84
4-6-84 TO REVISE GEO- METRICS		P. 19215 <i>Robert S. Dolese</i> DATE 4-11-84
4-6-84 TO ADD THE SECOND FILING		P. 19216 <i>Robert S. Dolese</i> DATE 4-11-84



R 49 L.M.
FLOOD ZONE A27 ELEV. 40
ZONE RURAL
CENSUS TRACT 33.02
INSIDE CITY LIMITS
NOT IN FIRE DISTRICT
● MANHOLE
■ CATCH BASIN

{ HOLD OCCUPANCY UNTIL }
{ ACCEPTED FOR MAINTENANCE }

WVE RECORD
3-24-84
R. Canary



**FINAL PLAT OF
HOLLY RIDGE TOWNHOUSES**
A TOWNHOUSE DEVELOPMENT
BEING A SUBDIVISION OF TRACT B-1-B1
OF THE SAVELL TRACT
LOCATED IN SECTIONS 29 & 31, T7S-R2E, GREENSBURG
LAND DISTRICT, EAST BATON ROUGE PARISH, LA.
FOR
C & S TOWNHOUSES, PARTNERSHIP
9313 SOUTH CHOCTAW
BATON ROUGE, LA.

3-24-84
R. Canary

RECEIVED
INSPECTION
APR 23 1984
MADE & MUNICIPAL
ADDRESSING DEPT.

PUBLIC DEDICATION: THE STREETS AND RIGHTS-OF-WAY SHOWN HEREON, IF NOT PREVIOUSLY DEDICATED, ARE HEREBY DEDICATED TO THE PERPETUAL USE OF THE PUBLIC. ALL AREAS SHOWN AS "PUBLIC SERVICITES" ARE GRANTED TO THE PUBLIC FOR USE OF UTILITIES, DRAINAGE, SEWAGE REMOVAL OR OTHER PROPER PURPOSE FOR THE GENERAL USE OF THE PUBLIC. NO BUILDING, STRUCTURE, OR FENCE SHALL BE CONSTRUCTED, HIGH SHROUBBERY PLANTED WITHIN THE LIMITS OF ANY PUBLIC SERVICITE SO AS TO PREVENT OR UNDESIRABLY INTERFERE WITH ANY PURPOSE FOR WHICH THE SERVICITE IS GRANTED. THE PUBLIC WILL ONLY BE RESPONSIBLE FOR MAINTAINING PUBLIC IMPROVEMENTS LOCATED WITHIN THE "PUBLIC SERVICITES" AND ARE NOT RESPONSIBLE FOR THE PRIVATE IMPROVEMENTS SUPERIMPOSED ON "PUBLIC SERVICITES".

SEWERAGE: NO PERSON SHALL PROVIDE OR INSTALL A METHOD OF SEWERAGE OTHER THAN CONNECTION TO AN APPROVED SANITARY SEWER SYSTEM UNTIL THE METHOD OF SEWAGE TREATMENT AND DISPOSAL HAS BEEN APPROVED BY THE EAST BATON ROUGE PUBLIC HEALTH UNIT.

PRIVATE DEDICATION: THE SERVICITES DESIGNATED ON THIS PLAT AS "MULTI-PURPOSE SERVICITES" ARE HEREBY DEDICATED TO THE UTILITY COMPANIES, HOMEOWNERS AND OCCUPANTS IN HOLLY RIDGE TOWNHOUSES FOR THE PURPOSE OF DRAINAGE, REMOVAL OF SEWAGE, ACCESS AND ALL UTILITY SERVICES. NO BUILDING, STRUCTURE, OR FENCE SHALL BE CONSTRUCTED, HIGH SHROUBBERY PLANTED WITHIN THE LIMITS OF ANY MULTI-PURPOSE SERVICITE SO AS TO PREVENT OR UNDESIRABLY INTERFERE WITH ANY PURPOSE FOR WHICH THE SERVICITE IS GRANTED.

THE SERVICITES SO DESIGNATED AS "MULTI-PURPOSE SERVICITES" ARE NOT HEREBY DEDICATED FOR USE BY THE GENERAL PUBLIC, BUT ARE DEDICATED FOR THE COMMON USE AND ENJOYMENT OF THE HOMEOWNERS AND OCCUPANTS IN HOLLY RIDGE TOWNHOUSES.

THOSE AREAS OF LAND, WITHIN EACH FILING THAT ARE NOT SPECIFICALLY DESIGNATED, AS LOTS, OR RESERVED OR RESTRICTED FOR OTHER USES, ARE HEREBY DESIGNATED BY C & S TOWNHOUSES, PARTNERSHIP, AS "COMMON PROPERTIES" AND ARE INTENDED FOR USE BY THE HOMEOWNERS AND OCCUPANTS IN HOLLY RIDGE TOWNHOUSES FOR RECREATION, SERVICITES AND OTHER RELATED ACTIVITIES.

THE "COMMON PROPERTIES" ARE NOT HEREBY DEDICATED FOR USE BY THE GENERAL PUBLIC, BUT ARE DEDICATED FOR THE COMMON USE AND ENJOYMENT OF THE HOMEOWNERS AND OCCUPANTS IN HOLLY RIDGE TOWNHOUSES.

RESTRICTIONS: ALL LOTS ARE SUBJECT TO DECLARATION OF PROTECTIVE COVENANTS FILED AS AN ADJUNCT HERETO.

William W. Addison 4-9-84
DIRECTOR, SECRETARY
C & S, CORPORATION
Frank G. Sullivan, Jr.
FRANK G. SULLIVAN, JR. PARTNER
C & S TOWNHOUSES, PARTNERSHIP
DATE 10-17-1983



General Notes
Zoning: Rural
Access: 75' Area
Water: Baton Rouge Water Works
Street: Gravel Concrete Drive
Sewer: Collection Served To Lake Sherwood
Agora Treatment Plant
Inundation Elev: Undetermined
100' W. Flood Elev: 500' msl
Denotes Public Servitude (15' SW, 25' Off Each Side)
Denotes Multi-Purpose Servitude (30' SW, 25' Off Each Side)

● Bench Mark: Elev 4103
Top Of West Front Center Bill Of Catch Basin At Shown
● Base Elevation: N 08°10' W
Being The Bearing Along The Property Line
Between To East Side And Lake Sherwood Area
As Shown On Map Of The Subdivision Of Tract
B-1-B2 Of The #2 Square Area, By William W.
Addison, P.E., Dated 3-17-78, Av. 45-79.

CERTIFICATION:
THIS IS TO CERTIFY THAT THIS PLAT CONFORMS TO LA. REVISED STATUTES 38:5051 ET SEQ AND CONFORMS TO ALL PARISH ORDINANCES CONCERNING THE SUBDIVISION OF LAND.

William W. Addison
WILLIAM W. ADDISON
DIRECTOR
DATE 10-20-83

Robert S. Dolese
ROBERT S. DOLESE
PLANNING DIRECTOR
DATE 10-22-83

Evans-Graves Engineers, Inc.
EVANS-GRAVES ENGINEERS, INC.
ENGINEERING CONSULTANTS

RECOMMENDED FOR APPROVAL
PLANNING COMMISSION
CITY OF BATON ROUGE AND
PARISH OF EAST BATON ROUGE

William W. Addison
WILLIAM W. ADDISON
DIRECTOR
DATE 10-20-83

APPROVED
PLANNING COMMISSION
CITY OF BATON ROUGE AND
PARISH OF EAST BATON ROUGE

Robert S. Dolese
ROBERT S. DOLESE
PLANNING DIRECTOR
DATE 10-22-83

EVANS-GRAVES ENGINEERS, INC.
ENGINEERING CONSULTANTS
BATON ROUGE, LA.