

# CABINET LINES



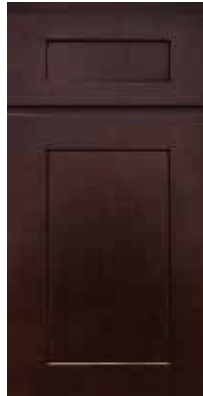
SHAKER  
SAND



SHAKER  
DESIGNER  
WHITE SLAB



SHAKER  
DESIGNER  
WHITE 5PC



SHAKER  
ESPRESSO



BROOKLYN  
MODERN  
GRAY



BROOKLYN  
SLATE



BROOKLYN  
BRIGHT  
WHITE



NAPA  
WHITE



LENOX  
COUNTRY



LENOX  
CANVAS

	Shaker Sand	Shaker Espresso	Shaker Designer White	Brooklyn Modern Gray	Brooklyn Bright White	Brooklyn Slate	Lenox Country Linen	Lenox Canvas	Napa White
<b>Cabinet Box</b>	1/2", 7 Ply, Plywood	1/2", 7 Ply, Plywood	1/2", 7 Ply, Plywood	1/2", 7 Ply, Plywood	1/2", 7 Ply, Plywood	1/2", 7 Ply, Plywood	1/2", 7 Ply, Plywood	1/2", 7 Ply, Plywood	1/2", 7 Ply, Plywood
<b>Drawer Box</b>	5/8" Solid Wood, Dovetailed	5/8" Solid Wood, Dovetailed	5/8" Solid Wood, Dovetailed	5/8" Solid Wood, Dovetailed	5/8" Solid Wood, Dovetailed	5/8" Solid Wood, Dovetailed	5/8" Solid Wood, Dovetailed	5/8" Solid Wood, Dovetailed	5/8" Solid Wood, Dovetailed
<b>Drawer Slides</b>	Under Mount, Full Extension, Metal, Soft Close w/ Ball Bearings	Under Mount, Full Extension, Metal, Soft Close w/ Ball Bearings	Under Mount, Full Extension, Metal, Soft Close w/ Ball Bearings	Under Mount, Full Extension, Metal, Soft Close w/ Ball Bearings	Under Mount, Full Extension, Metal, Soft Close w/ Ball Bearings	Under Mount, Full Extension, Metal, Soft Close w/ Ball Bearings	Under Mount, Full Extension, Metal, Soft Close w/ Ball Bearings	Under Mount, Full Extension, Metal, Soft Close w/ Ball Bearings	Under Mount, Full Extension, Metal, Soft Close w/ Ball Bearings
<b>Wood Species</b>	Birch	Birch	Birch	Birch	Birch	Birch	Birch	Birch	Birch
<b>Door Hinge</b>	DTC 6 Way Adjustable, Soft Close	DTC 6 Way Adjustable, Soft Close	DTC 6 Way Adjustable, Soft Close	DTC 6 Way Adjustable, Soft Close	DTC 6 Way Adjustable, Soft Close	DTC 6 Way Adjustable, Soft Close	DTC 6 Way Adjustable, Soft Close	DTC 6 Way Adjustable, Soft Close	DTC 6 Way Adjustable, Soft Close
<b>Shelves</b>	Adjustable, 3/4" Plywood	Adjustable, 3/4" Plywood	Adjustable, 3/4" Plywood	Adjustable, 3/4" Plywood	Adjustable, 3/4" Plywood	Adjustable, 3/4" Plywood	Adjustable, 3/4" Plywood	Adjustable, 3/4" Plywood	Adjustable, 3/4" Plywood
<b>Finish Color</b>	Sand	Espresso Stain	Designer White	Modern Gray	Bright White	Slate Stain	Country Linen	Canvas	Bright White
<b>Exterior Finish</b>	Sand to Match Doors	Espresso to Match Doors	Designer White to Match Doors	Modern Gray to Match Doors	Bright White to Match Doors	Slate to Match Doors	Country Linen to Match Doors	Canvas to Match Doors	Bright White to Match Doors
<b>Interior Finish</b>	Natural	Natural	Natural	Natural	Natural	Natural	Natural	Natural	Natural
<b>Glazing</b>	No	No	No	No	No	No	Yes, Brown Lines	No	No
<b>Base Reinforcement</b>	3" Plywood Stretchers	3" Plywood Stretchers	3" Plywood Stretchers	3" Plywood Stretchers	3" Plywood Stretchers	3" Plywood Stretchers	3" Plywood Stretchers	3" Plywood Stretchers	3" Plywood Stretchers
<b>Face Frame</b>	1 1/2" Rails and Stiles, Solid Wood	1 1/2" Rails and Stiles, Solid Wood	1 1/2" Rails and Stiles, Solid Wood	1 1/2" Rails and Stiles, Solid Wood	1 1/2" Rails and Stiles, Solid Wood	1 1/2" Rails and Stiles, Solid Wood	1 1/2" Rails and Stiles, Solid Wood	1 1/2" Rails and Stiles, Solid Wood	1 1/2" Rails and Stiles, Solid Wood
<b>Full Overlay Door</b>	5-Piece with Solid Center Panel; 3 1/2" Stiles and Rails	5-Piece with Solid Center Panel; 3 1/2" Stiles and Rails	5-Piece with Solid Center Panel; 3 1/2" Stiles and Rails	5-Piece with Solid Center Panel; 3 1/2" Stiles and Rails	5-Piece with Solid Center Panel; 3 1/2" Stiles and Rails	5-Piece with Solid Center Panel; 3 1/2" Stiles and Rails	9-Piece Raised Panel with Applied Molding	9-Piece Raised Panel with Applied Molding	5-Piece with Solid Center Panel; 3 1/2" Stiles and Rails
<b>Drawer Head</b>	5 Piece with Solid Center Panel; 2 3/4" Stiles and 2 3/4" Rails	5 Piece with Solid Center Panel; 2 3/4" Stiles and 2 3/4" Rails	5 Piece with Solid Center Panel; 2 3/4" Stiles and 2 3/4" Rails Also available in slab	5 Piece with Solid Center Panel; 2 3/4" Stiles and 2 3/4" Rails	5 Piece with Solid Center Panel; 2 3/4" Stiles and 2 3/4" Rails	5 Piece with Solid Center Panel; 2 3/4" Stiles and 2 3/4" Rails	9-Piece Raised Panel with Applied Molding	9-Piece Raised Panel with Applied Molding	5 Piece with Solid Center Panel; 2 3/4" Stiles and 2 3/4" Rails
<b>Design &amp; Structure</b>	Meets Leading Industry Standards	Meets Leading Industry Standards	Meets Leading Industry Standards	Meets Leading Industry Standards	Meets Leading Industry Standards	Meets Leading Industry Standards	Meets Leading Industry Standards	Meets Leading Industry Standards	Meets Leading Industry Standards
<b>Assembly</b>	Glue and Staples, No Cams or Brackets	Glue and Staples, No Cams or Brackets	Glue and Staples, No Cams or Brackets	Glue and Staples, No Cams or Brackets	Glue and Staples, No Cams or Brackets	Glue and Staples, No Cams or Brackets	Glue and Staples, No Cams or Brackets	Glue and Staples, No Cams or Brackets	Glue and Staples, No Cams or Brackets
<b>Toe Kick Depth w/ TK Skin</b>	3.75"	3.75"	3.75"	3.75"	3.75"	3.75"	3.75"	3.75"	3.75"
<b>Certifications</b>	TSCA VI, CARB, KCMA	TSCA VI, CARB, KCMA	TSCA VI, CARB, KCMA	TSCA VI, CARB, KCMA	TSCA VI, CARB, KCMA	TSCA VI, CARB, KCMA	TSCA VI, CARB, KCMA	TSCA VI, CARB, KCMA	TSCA VI, CARB, KCMA

### Wall Cabinet Coding

Standard (12" Deep)

Refrigerator



**Notes:**

- Standard wall cabinets are 12" deep. Refrigerator cabinets are 24" deep.
- Add door thickness for total cabinet depth.
- Please refer to the Products by Cabinet Line chart to determine which products are carried for each cabinet line.

### 24" High Double Door Wall



Item Code	Outer Dimensions		
	W	H	D
W3024	30	24	12
W3324	33	24	12
W3624	36	24	12

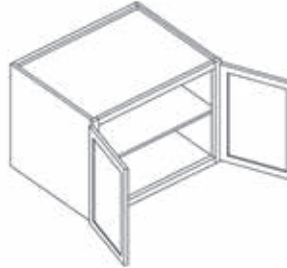
### 15" Wall Stacking Cabinets with Glass



Item Code	Outer Dimensions		
	W	H	D
WS2415-2	24	15	12
WS2715-2	27	15	12
WS3015-2	30	15	12
WS3315-2	33	15	12
WS3615-2	36	15	12

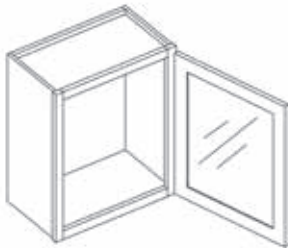
\*Door comes pre-routed with glass insert and finished interior

### 24" Deep Wall (Refrigerator Cabinet)



Item Code	Outer Dimensions		
	W	H	D
W331824	33	18	24
W332424	33	24	24
W361824	36	18	24
W362424	36	24	24

### 15" Wall Stacking Cabinets with Glass



Item Code	Outer Dimensions		
	W	H	D
WS1215	12	15	12
WS1515	15	15	12
WS1815	18	15	12
WS2115	21	15	12

\*Door comes pre-routed with glass insert and finished interior

### 30" Microwave Wall Cabinet



Item Code	Outer Dimensions		
	W	H	D
MWC3018	30	18	12

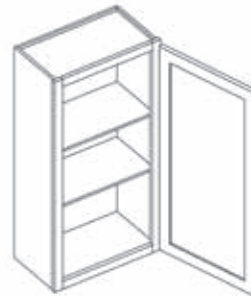
### 15" Corner Wall Stacking Cabinet with Glass



Item Code	Outer Dimensions		
	W	H	D
CWS2415	24	15	12
CWS2715	27	15	15

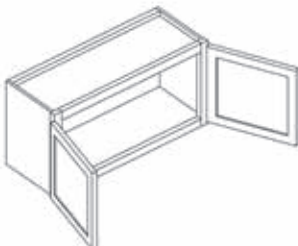
\*Door comes pre-routed with glass insert and finished interior

### 30" - 36" High Single Door Wall



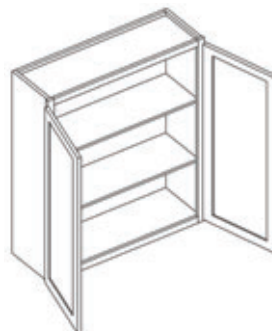
Item Code	Outer Dimensions		
	W	H	D
W930	9	30	12
W1230	12	30	12
W1530	15	30	12
W1830	18	30	12
W2130	21	30	12
W936	9	36	12
W1236	12	36	12
W1536	15	36	12
W1836	18	36	12
W2136	21	36	12

### 12" - 21" High Double Door Wall



Item Code	Outer Dimensions		
	W	H	D
W3012	30	12	12
W3612	36	12	12
W3015	30	15	12
W3312	33	12	12
W3315	33	15	12
W3615	36	15	12
W3018	30	18	12
W3318	33	18	12
W3618	36	18	12
W3021	30	21	12

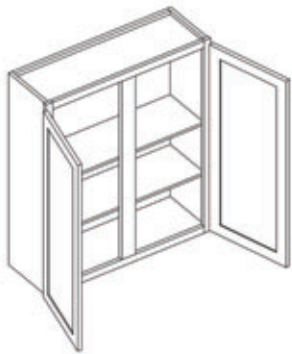
### 30" - 36" High Double Door Wall



Item Code	Outer Dimensions		
	W	H	D
W2430-2	24	30	12
W2730	27	30	12
W3030	30	30	12
W3330	33	30	12
W3630	36	30	12
W3930	39	30	12
W2436-2	24	36	12
W2736	27	36	12
W3036	30	36	12
W3336	33	36	12
W3636	36	36	12
W3936	39	36	12

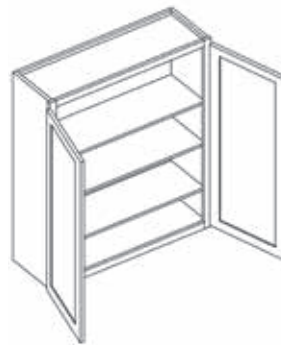


30" - 36" High Double Door with Center Stile



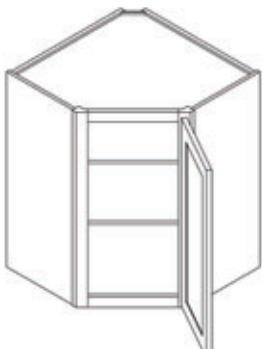
Item Code	Outer Dimensions		
	W	H	D
W4230	42	30	12
W4236	42	36	12

42" High Double Door Wall



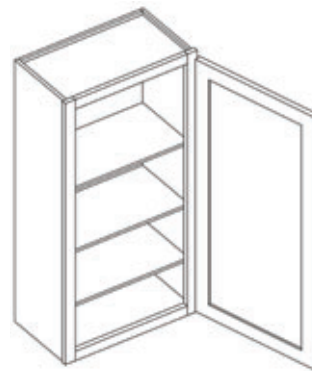
Item Code	Outer Dimensions		
	W	H	D
W2442-2	24	42	12
W2742	27	42	12
W3042	30	42	12
W3342	33	42	12
W3642	36	42	12
W3942	39	42	12

30" - 36" High Corner Wall



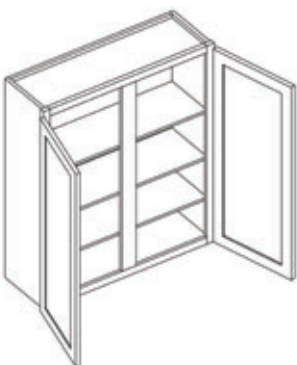
Item Code	Outer Dimensions		
	W	H	D
CW2430	24	30	12
CW2436	24	36	12
CW2736	27	36	15

42" High Single Door Wall



Item Code	Outer Dimensions		
	W	H	D
W942	9	42	12
W1242	12	42	12
W1542	15	42	12
W1842	18	42	12
W2142	21	42	12

42" High Double Door Wall with Center Stile



Item Code	Outer Dimensions		
	W	H	D
W4242	42	42	12

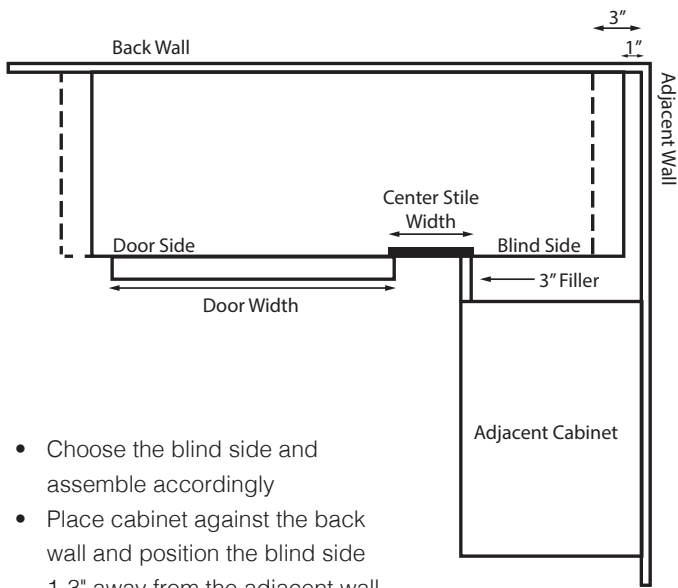
42" High Corner Wall



Item Code	Outer Dimensions		
	W	H	D
CW2442	24	42	12
CW2742	27	42	15

## Installing a Blind Wall Cabinet

Proper installation ensures that the doors will open and show correct reveal



- Choose the blind side and assemble accordingly
- Place cabinet against the back wall and position the blind side 1-3" away from the adjacent wall
- Place at least a 3" filler next to the adjacent cabinet

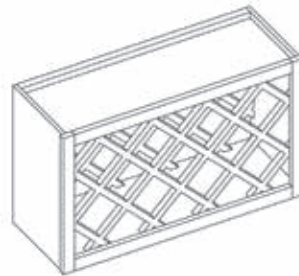
## Wall Tower with 3 Drawers



Item Code	Outer Dimensions		
	W	H	D
DWR1548	15	48	15
DWR1554	15	54	15
DWR1560	15	60	15

\*Works great with a vanity

## Wine Rack



Item Code	Outer Dimensions		
	W	H	D
WR3018	30	18	12

## 30" - 36" High Blind Wall



Item Code	Outer Dimensions		
	W	H	D
BW2430	24	30	12
BW3030	30	30	12
BW3630	36	30	12
BW2436	24	36	12
BW3036	30	36	12
BW3636	36	36	12

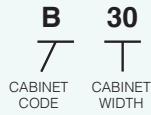
## 42" High Blind Wall



Item Code	Outer Dimensions		
	W	H	D
BW3042	30	42	12



### Base Cabinet Coding



**Notes:**

- Standard base cabinets are 24" deep and 34.5" high.
- Add door thickness for total cabinet depth.
- Please refer to the Products by Cabinet Line chart to determine which products are carried for each cabinet line.
- NW has single drawer on B12-B36.

### Double Door Standard Base with Center Stile



Item Code	Outer Dimensions		
	W	H	D
B42	42	34.5	24

### Microwave Base Cabinet



Item Code	Outer Dimensions		
	W	H	D
MBC30	30	34.5	24

\*Finished interior

### Double Door Standard Base



Item Code	Outer Dimensions		
	W	H	D
B24-2*	24	34.5	24
B27	27	34.5	24
B30	30	34.5	24
B33	33	34.5	24
B36	36	34.5	24
B39	39	34.5	24

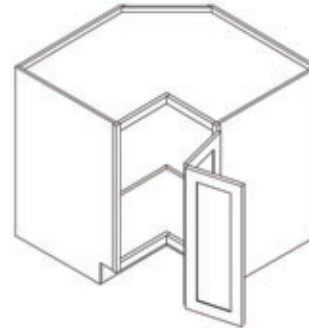
\*B24-2 has one drawer and two doors  
\*Napa White has single drawer up to B36.

### Single Door Full Height Base



Item Code	Outer Dimensions		
	W	H	D
B09	9	34.5	24

### Easy Reach



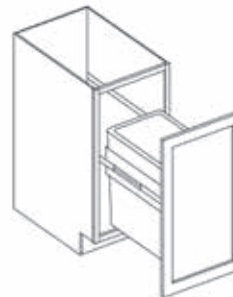
Item Code	Outer Dimensions		
	W	H	D
ER33	33	34.5	24
ER36	36	34.5	24

### Single Door Standard Base



Item Code	Outer Dimensions		
	W	H	D
B12	12	34.5	24
B15	15	34.5	24
B18	18	34.5	24
B21	21	34.5	24

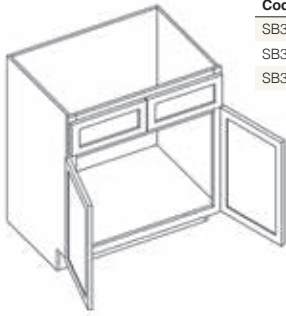
### Trash Can Base (Full Height)



Item Code	Outer Dimensions		
	W	H	D
TRB-1*	18	34.5	24
TRB-2**	18	34.5	24

\*Includes one 50 QT can  
\*\*Includes two 35 QT cans

### Sink Base



Item Code	Outer Dimensions		
	W	H	D
SB30	30	34.5	24
SB33	33	34.5	24
SB36	36	34.5	24



### Desk Drawer Base



Item Code	Outer Dimensions		
	W	H	D
DDB18	18	29.5	24

### Sink Base with Center Stile



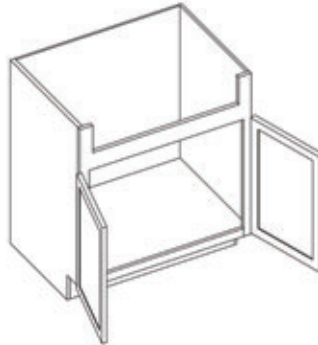
Item Code	Outer Dimensions		
	W	H	D
SB42	42	34.5	24
SB48	48	34.5	24

### Cooking Center



Item Code	Outer Dimensions		
	W	H	D
CC30	30	34.5	24

### 36" Farm Sink Base



Item Code	Outer Dimensions		
	W	H	D
FSB36	36	34.5	24

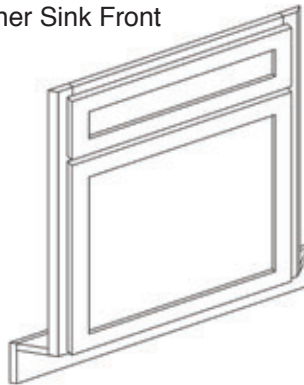
\*Height of sink inset is 13.5"

### Drawer Base



Item Code	Outer Dimensions		
	W	H	D
DB12-3	12	34.5	24
DB15-3	15	34.5	24
DB18-3	18	34.5	24
DB21-3	21	34.5	24
DB24-3	24	34.5	24
DB27-3	27	34.5	24
DB30-3	30	34.5	24
DB33-3	33	34.5	24
DB36-3	36	34.5	24

### Corner Sink Front



Item Code	Outer Dimensions		
	W	H	D
CSF42	27	34.5	2
CSF-FLOOR*	48	0.5	48

\*Sink floor not pictured and sold separately

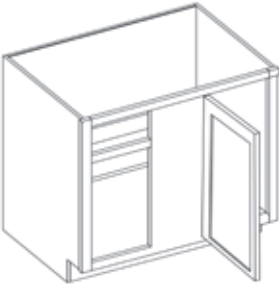
\* Back of face frame measures 27" wide

### Drawer Base - 2 Drawer



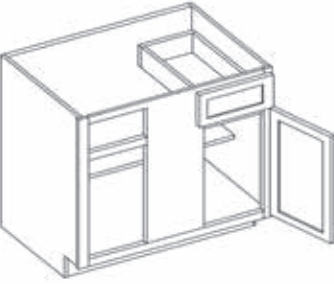
Item Code	Outer Dimensions		
	W	H	D
DB30-2	30	34.5	24
DB36-2	36	34.5	24

### 36" Blind Base



Item Code	Outer Dimensions		
	W	H	D
BB36	30	34.5	24

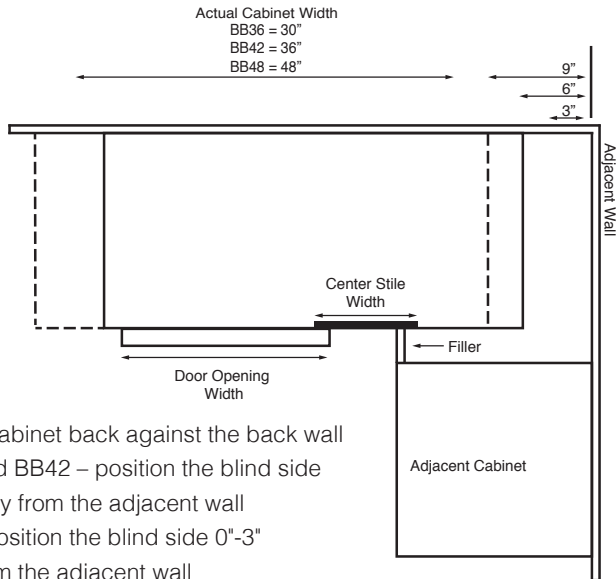
### 42" - 48" Blind Base



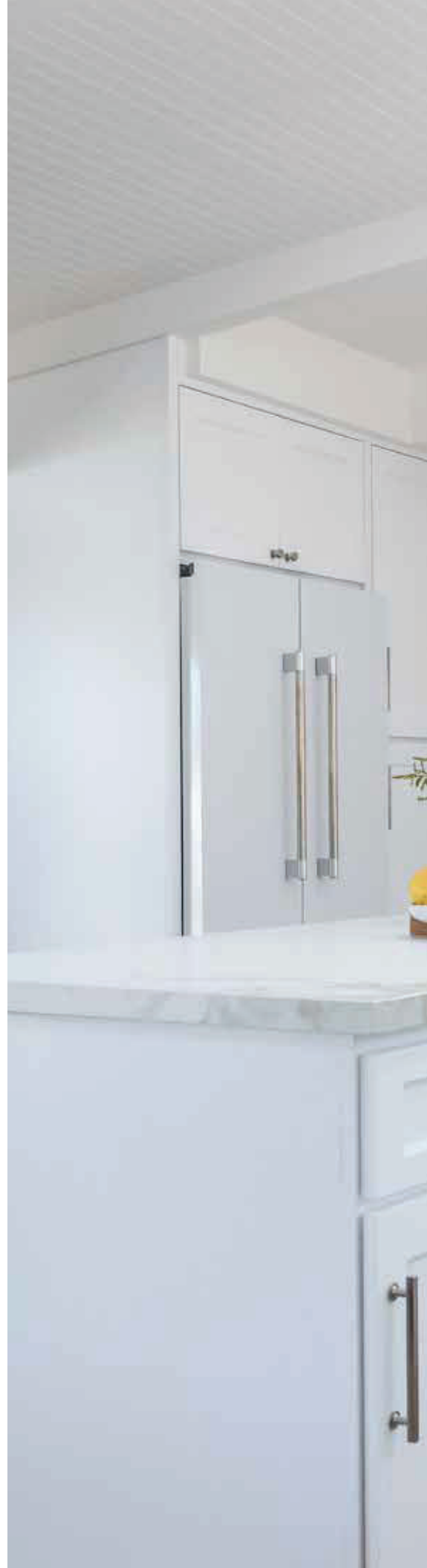
Item Code	Outer Dimensions		
	W	H	D
BB42	42	34.5	24
BB48	48	34.5	24

## Installing a Blind Base Cabinet

Proper installation ensures that the drawer will clear hardware, and doors will open, and show correct reveal

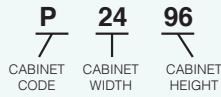


- Place the cabinet back against the back wall
  - BB36 and BB42 – position the blind side 6"-9" away from the adjacent wall
  - BB48 - position the blind side 0"-3" away from the adjacent wall
- Place at least a 3" filler next to adjacent cabinet





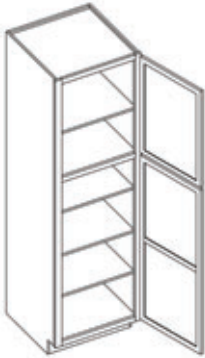
### Tall Cabinet Coding



**Notes:**

- Standard tall cabinets are 24" deep.
- Add door thickness for total cabinet depth.
- Please refer to the Products by Cabinet Line chart to determine which products are carried for each cabinet line.

### Single Door Pantry



Item Code	Outer Dimensions		
	W	H	D
P1884*	18	84	24
P1890*	18	90	24
P1896**	18	96	24

\*Includes four shelves  
\*\*Includes five shelves

### 24" and 30" Double Door Pantry



Item Code	Outer Dimensions		
	W	H	D
P2484*	24	84	24
P2490*	24	90	24
P2496**	24	96	24
P3090*	30	90	24
P3096**	30	96	24

\*Includes four shelves  
\*\*Includes five shelves

### Oven Cabinet (Includes One Drawer)



Item Code	Outer Dimensions		
	W	H	D
OC3390	33	90	24
OC3396	33	96	24

\*Includes one drawer

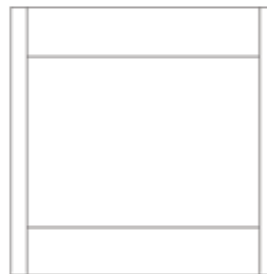


### Oven Cabinet Drawer



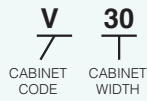
Item Code	Outer Dimensions		
	W	H	D
OCD337	32.5	6.75	24

### Oven Cabinet Overlay Panel



Item Code	Outer Dimensions		
	W	H	D
OP3353	32.5	53	0.75

## Vanity Cabinet Coding

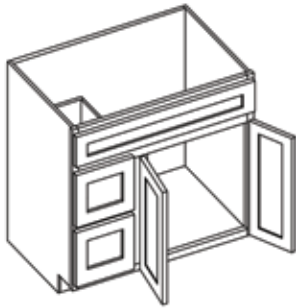


### Notes:

- Standard vanity cabinets are 21" deep.
- Add door thickness for total cabinet depth.
- Please refer to the Products by Cabinet Line chart to determine which products are carried for each cabinet line.
- The V24 only comes with 1 drawer in Napa White



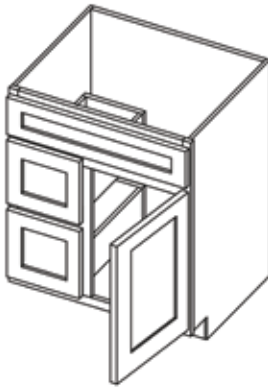
## Vanity Combo Cabinet 36"



Item Code	Outer Dimensions		
	W	H	D
VSBDR36	36	34.5	21
VSDL36	36	34.5	21

\*Pictured is the VSDL36

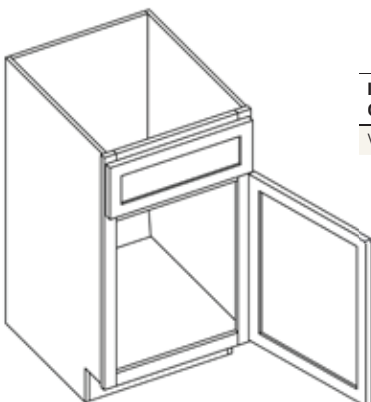
## Vanity Combo Cabinet 30"



Item Code	Outer Dimensions		
	W	H	D
VSBDR30	30	34.5	21
VSDL30	30	34.5	21

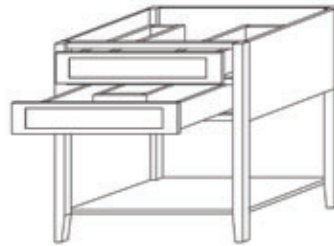
\*Pictured is the VSDL30

## Single Door Vanity



Item Code	Outer Dimensions		
	W	H	D
V21	21	34.5	21

## 36" Open Shelf Vanity Sink Base



Item Code	Outer Dimensions		
	W	H	D
VSBOS36	36	34.5	21

\*Includes adjustable feet

\*Height does not include adjustable foot

## Double Door Vanity



Item Code	Outer Dimensions		
	W	H	D
V24-2	24	34.5	21
V27	27	34.5	21
V30	30	34.5	21
V33	33	34.5	21
V36	36	34.5	21

### Vanity Drawer Base



Item Code	Outer Dimensions		
	W	H	D
VDB12	12	34.5	21
VDB15	15	34.5	21
VDB18	18	34.5	21
VDB21	21	34.5	21
VDB24	24	34.5	21

### Vanity Sink Base



Item Code	Outer Dimensions		
	W	H	D
VSB36	36	34.5	21
VSB42	42	34.5	21
VSB48	48	34.5	21

### Extended Vanity Sink Base



Item Code	Outer Dimensions		
	W	H	D
EVSBS54	54	34.5	21
EVSBS60	60	34.5	21

\*Available in Taylor only

### Single Door Vanity Base



Item Code	Outer Dimensions		
	W	H	D
VB12	12	34.5	21
VB15	15	34.5	21
VB18	18	34.5	21

### Double Vanity Sink Base



Item Code	Outer Dimensions		
	W	H	D
DVSB54	54	34.5	21

\*Available in Taylor only

### 24" Vanity Drawer



Item Code	Outer Dimensions		
	W	H	D
KD24	23.5	4.75	21

\*Drawer box height is 2"

### 36" Vanity Drawer

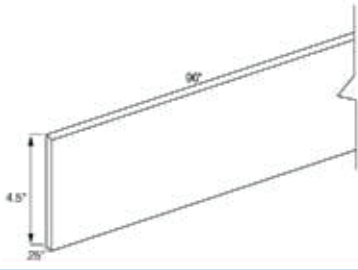


Item Code	Outer Dimensions		
	W	H	D
KD36	29.5	4.75	21

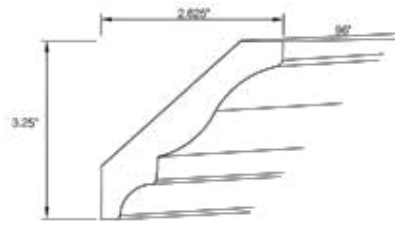
\*Adjustable Sides  
\*Drawer box height is 2"  
\*Trimable to 30"



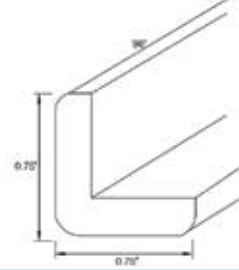
Toe Kick - TKS8



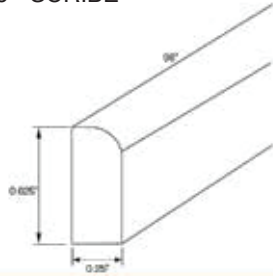
Large Crown Molding - BCM8



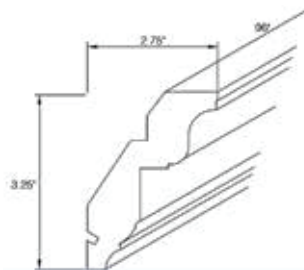
Outside Corner Molding - OCM8



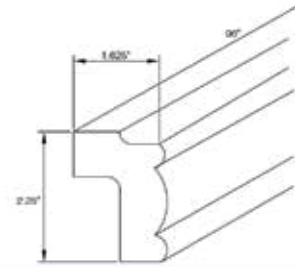
Scribe - SCRIBE



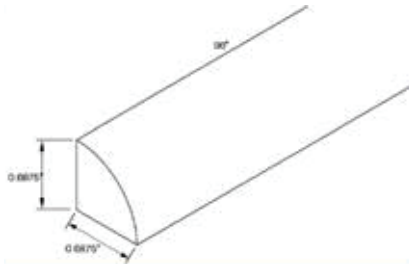
Royal Crown Molding - RCM8



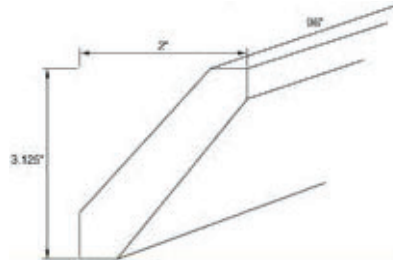
Traditional Light Rail Molding - LRM8



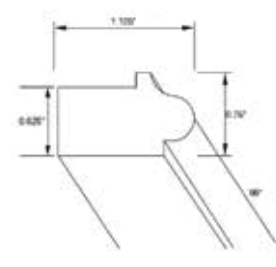
Shoe - SHOE



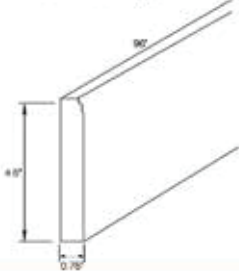
Shaker Crown Molding - SCM8



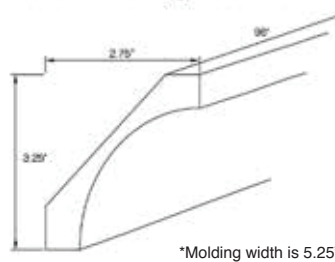
Bottom Edge Molding - BEM8



Furniture Base Molding - FBM8

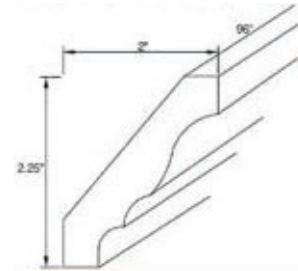


Cove Crown Molding - COM8

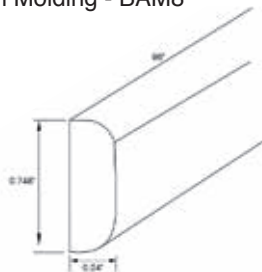


\*Molding width is 5.25"

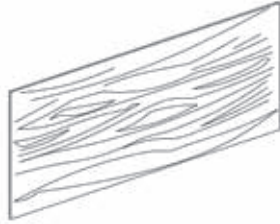
Traditional Crown Molding - CM8



Batten Molding - BAM8



### Back Panel - Long Grain Plywood



Item Code	Outer Dimensions		
	W	H	D
BPLG4896	48	96	0.25

\*Finished one side, raw back

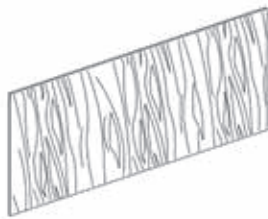
### 1/2" Thick Finished Plywood Panel



Item Code	Outer Dimensions		
	W	H	D
PSP4896	96	48	0.5

\*Finished one side, natural UV back

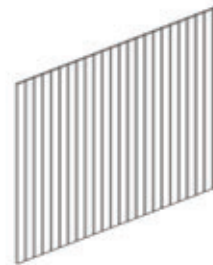
### Back Panel - Short Grain Plywood



Item Code	Outer Dimensions		
	W	H	D
BPSG9648	96	48	0.25

\*Finished one side, raw back

### Bead Board



Item Code	Outer Dimensions		
	W	H	D
BBP4842	48	42	0.25

\*Finished one side, raw back

### Filler



Item Code	Outer Dimensions		
	W	H	D
F396	3	96	0.75
F696	6	96	0.75

\*All four edges finished

### Overlay Filler



Item Code	Outer Dimensions		
	W	H	D
OLF330	2.5	28.75	0.75
OLF336	2.5	34.75	0.75
OLF342	2.5	40.75	0.75
OLF630**	5.5	28.75	0.75

\*All four edges finished  
\*\*Available only in Premier

### Fluted Filler



Item Code	Outer Dimensions		
	W	H	D
FF396	3	96	0.75

\*All four edges finished

### Dishwasher End Panel



Item Code	Outer Dimensions		
	W	H	D
DWR3	3	34.5	24

\*0.5" panel thickness  
\*Finished one side, natural UV back  
\*Value series finished on both sides

### Tall End Panel



Item Code	Outer Dimensions		
	W	H	D
TEP3096	1.5	96	30

\*0.5" panel thickness  
\*Finished one side, natural UV back  
\*Value Series finished on both sides

### Bookcase End



Item Code	Outer Dimensions		
	W	H	D
BCE1596	1.5	96	15

\*Requires shelf  
\*Shelf clips available  
\*0.5" panel thickness

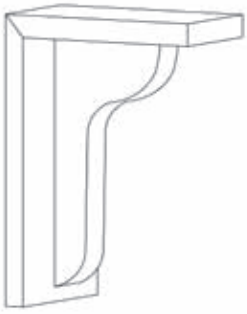
### Shelf



Item Code	Outer Dimensions		
	W	H	D
**SHELF1296	96	0.625	12
***SHELF2496	96	0.625	24

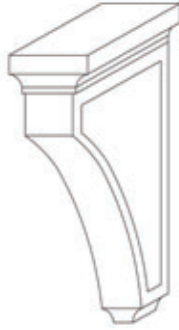
\*All sides finished  
\*3/4" plywood construction  
\*\*Available in natural or painted  
\*\*\*Available in natural only

Corbel - Basic Medium



Item Code	Outer Dimensions		
	W	H	D
CORSM	3	10.5	7.5

Corbel - Transitional



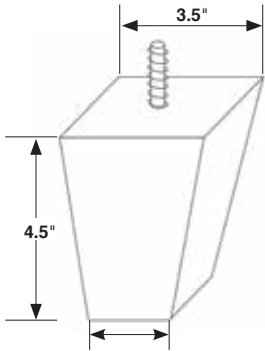
Item Code	Outer Dimensions		
	W	H	D
CORT	3.5	10.5	7

Turned Post



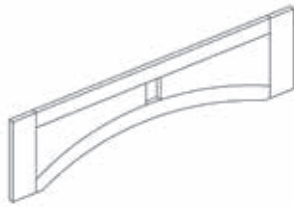
Item Code	Outer Dimensions		
	W	H	D
TPOSTP3	3	35.5	3
TPOSTP5	5	35.5	5

Bunfoot - Transitional



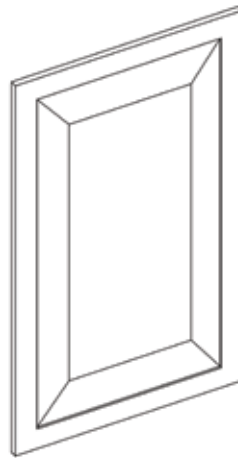
Item Code	Outer Dimensions		
	H	Top	Bottom
TBUNFOOT2	4.5	3.5	2

Raised Panel Valance



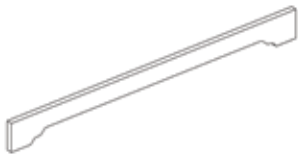
Item Code	Outer Dimensions		
	W	H	D
VRP42	42	12	0.75
VRP48	48	12	0.75

Decorative Base/Wall Panels



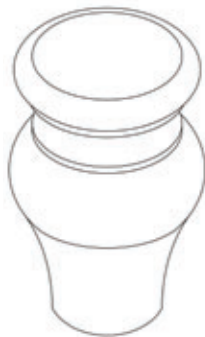
Item Code	Outer Dimensions		
	W	H	D
DWP1215	11.5	13.75	0.75
DWP2415	23.5	13.75	0.75
DWP1230	11.5	28.75	0.75
DWP2430	23.5	28.75	0.75
DWP1236	11.5	34.75	0.75
DWP1242	11.5	40.75	0.75

Furniture Valance



Item Code	Outer Dimensions		
	W	H	D
VFUNR37	37	4.5	0.75

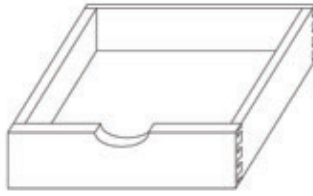
Bunfoot



Item Code	Outer Dimensions		
	W	H	D
TBUNFOOT	3	4.5	3



### Soft Close Roll Out Tray



\*Includes two trays & four tracks

Item Code	Outer Dimensions		
	W	H	D
ROT15-SC	10.125	4	21
ROT18-SC	13.125	4	21
ROT21-SC	16.125	4	21
ROT24-SC	19.125	4	21
ROT27-SC	22.125	4	21
ROT30-SC	25.125	4	21
ROT33-SC	28.125	4	21
ROT36-SC	31.125	4	21

### Roll Out Tray Usage Guide

Item Code	Designed to Fit
ROT15-SC	B15
ROT18-SC	B18, P1884, P1890, P1896
ROT21-SC	B21
ROT24-SC	B24, P2484, P2490, P2496
ROT27-SC	B27
ROT30-SC	B30, SB30, P3084, P3090, P3096
ROT33-SC	B33, SB33
ROT36-SC	B36, SB36

### Lazy Susan Kit



Item Code	Outer Dimensions		
	W	H	D
LSK	29	1.5	29

\*Includes two trays for shelf mounting  
\*Birch plywood construction

### Spice Rack Door Attachment



Item Code	Outer Dimensions		
	W	H	D
SRD12	11.5	24	4
SRD15	14.5	24	4

### Trash Can Insert for B18



Item Code	Outer Dimensions		
	W	H	D
TCCK*	14.625	4.125	19.75

- Dovetail, solid wood construction
  - Undermount, full extension, soft close slides
- \*Includes two 35 QT cans

### Spice Tray Insert



Item Code	Outer Dimensions		
	W	H	D
STI14	13.375	1.094	19.75
STI20	19.75	1.094	19.75

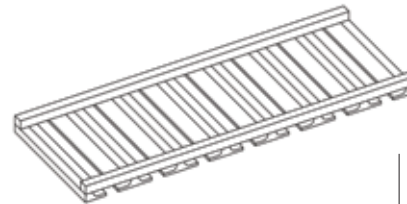
### Spice Rack Insert



Item Code	Outer Dimensions		
	W	H	D
SRI9	5.75	24	20.5

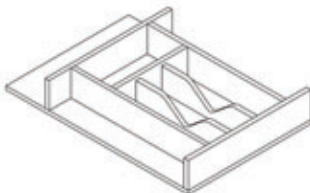
\*Fits in the B09

### Stemware Rack



Item Code	Outer Dimensions		
	W	H	D
SWR3012	28.5	1.5	10.5

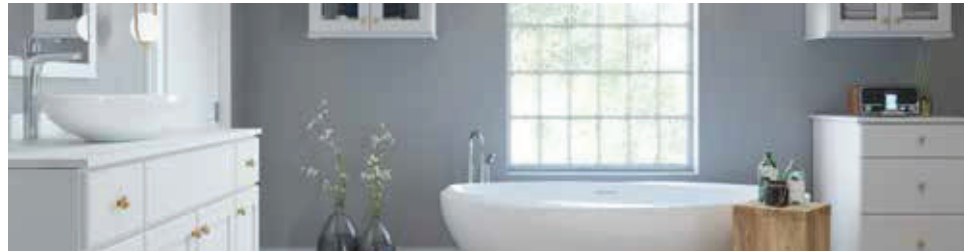
### Cutlery Drawer Insert



Item Code	Outer Dimensions		
	W	H	D
CDI14	13.375	1.75	19.75
CDI20	19.75	1.75	19.75

\*Accessories displayed on this page can be installed on assembled orders

# Hardware



Colorado Pull



*Shown In Matte Black*

Square Knob



*Shown In Rose Gold*

Bar Pull Knob



*Shown In Rubbed Oil Bronze*

Bar Pull



*Shown In Satin Nickel*

Manhattan Pull



*Shown In Rose Gold*

Colorado Knob



*Shown In Polished Chrome*

Miami Pull



*Shown In Dark Pewter*

Round Flat Top Knob



*Shown In Dark Pewter*

Diecast Knob



*Shown In Dark Pewter*

Modern Square Pull



*Shown In Matte Black*

## Available Finishes:



Rose Gold



Satin Nickel



Matte Black



Polished Chrome



Stainless Steel



Brushed Bronze





Item Code	Item Description	Shaker Sand	Shaker Designer White	Shaker Espresso	Brooklyn Modern Gray	Brooklyn Bright White	Brooklyn Slate	Lenox Country Linen	Lenox Canvas	Napa White
<b>Premier</b>										
<b>Wall Cabinets</b>										
BW2430	Blind Wall Cabinet - 24" W x 30" H	●	●	●	●	●	●	●	●	●
BW3030	Blind Wall Cabinet - 30" W x 30" H	●	●	●	●	●	●	●	●	●
BW3630	Blind Wall Cabinet - 36" W x 30" H	●	●	●	●	●	●	●	●	●
BW2436	Blind Wall Cabinet - 24" W x 36" H	●	●	●	●	●	●	●	●	●
BW3036	Blind Wall Cabinet - 30" W x 36" H	●	●	●	●	●	●	●	●	●
BW3636	Blind Wall Cabinet - 36" W x 36" H	●	●	●	●	●	●	●	●	●
CW2430	Corner Wall Cabinet - 24" W x 30" H	●	●	●	●	●	●	●	●	●
CW2436	Corner Wall Cabinet - 24" W x 36" H	●	●	●	●	●	●	●	●	●
CW2736	Corner Wall Cabinet - 27" W x 36" H	●	●	●	●	●	●	●	●	●
CWS2415	15" Corner Wall Stacking Cabinets	●	●	●	●	●	●	-	-	●
CWS2735	15" Corner Wall Stacking Cabinets	●	●	●	●	●	●	-	-	●
W942	Single Door Wall Cabinet - 9" W x 42" H	●	●	●	●	●	●	●	●	●
W1242	Single Door Wall Cabinet - 12" W x 42" H	●	●	●	●	●	●	●	●	●
W1542	Single Door Wall Cabinet - 15" W x 42" H	●	●	●	●	●	●	●	●	●
W1842	Single Door Wall Cabinet - 18" W x 42" H	●	●	●	●	●	●	●	●	●
W2142	Single Door Wall Cabinet - 21" W x 42" H	●	●	●	●	●	●	●	●	●
W2442-2	Double Door Wall Cabinet - 24" W x 42" H	●	●	●	●	●	●	●	●	●
W2742	Double Door Wall Cabinet - 27" W x 42" H	●	●	●	●	●	●	●	●	●
W3042	Double Door Wall Cabinet - 30" W x 42" H	●	●	●	●	●	●	●	●	●
W3342	Double Door Wall Cabinet - 33" W x 42" H	●	●	●	●	●	●	●	●	●
W3642	Double Door Wall Cabinet - 36" W x 42" H	●	●	●	●	●	●	●	●	●
W3942	Double Door Wall Cabinet - 39" W x 42" H	●	●	●	●	●	●	●	●	●
W4242	Double Door Wall Cabinet - 42" W x 42" H	●	●	●	●	●	●	●	●	●
BW3042	Blind Wall Cabinet - 30" W x 42" H	●	●	●	●	●	●	●	●	●
BW3642	Blind Wall Cabinet - 36" W x 42" H	●	●	●	●	●	●	●	●	●
CW2442	Corner Wall Cabinet - 24" W x 42" H	●	●	●	●	●	●	●	●	●
CW2742	Corner Wall Cabinet - 27" W x 42" H	●	●	●	●	●	●	●	●	●
DWR1548	Wall Twr w/ 3 Drws - 15" W x 48" H x 15" D	●	●+	●	●	●	●	●	●	●
DWR1554	Wall Twr w/ 3 Drws - 15" W x 54" H x 15" D	●	●+	●	●	●	●	●	●	●
DWR1560	Wall Twr w/ 3 Drws - 15" W x 60" H x 15" D	●	●+	●	●	●	●	●	●	●
MWC3018	Microwave Wall Cabinet - 30" W x 18" H x 12" D	●	●	●	●	●	●	●	●	●
WR3018	Wine Rack - 30" W x 18" H x 12" D	●	●	●	●	●	●	●	●	●
<b>Base Cabinets</b>										
B09	Single Door Full Height Base Cabinet - 9" W	●	●	●	●	●	●	●	●	●
B12	Single Door Standard Base Cabinet - 12" W	●	●+	●	●	●	●	●	●	●
B15	Single Door Standard Base Cabinet - 15" W	●	●+	●	●	●	●	●	●	●
B18	Single Door Standard Base Cabinet - 18" W	●	●+	●	●	●	●	●	●	●
B21	Single Door Standard Base Cabinet - 21" W	●	●+	●	●	●	●	●	●	●
B24-2	Double Door Standard Base Cabinet - 24" W	●	●+	●	●	●	●	●	●	●
B27	Double Door Standard Base Cabinet - 27" W	●	●+	●	●	●	●	●	●	●
B30	Double Door Standard Base Cabinet - 30" W	●	●+	●	●	●	●	●	●	●
B33	Double Door Standard Base Cabinet - 33" W	●	●+	●	●	●	●	●	●	●
B36	Double Door Standard Base Cabinet - 36" W	●	●+	●	●	●	●	●	●	●
B39	Double Door Standard Base Cabinet - 39" W	●	●+	●	●	●	●	●	●	●
B42	Double Door Standard Base Cabinet - 42" W	●	●+	●	●	●	●	●	●	●

\*All Value Series drawers can be upgraded. Upgrade includes: Drawer Box: 5/8" Solid Wood, Dovetailed; Drawer Slides: Under Mount, Full Extension, Metal, Soft Close with Ball Bearings. All Drawer Upgrade SKUs are notated with 'DU' on the Order Form

\*All Shaker Designer White drawers are available with either a slab drawer front or 5-Piece drawer front. All 5-Piece SKUs are notated with '5PC' on the Order Form

Item Code	Item Description	Shaker Sand	Shaker Designer White	Shaker Espresso	Brooklyn Modern Gray	Brooklyn Bright White	Brooklyn Slate	Lenox Country Linen	Lenox Canvas	Napa White
<b>Premier</b>										
<b>Base Cabinets</b>										
DB12-3	Drawer Base Cabinet - 12" W	●	●+	●	●	●	●	●	●	●
DB15-3	Drawer Base Cabinet - 15" W	●	●+	●	●	●	●	●	●	●
DB18-3	Drawer Base Cabinet - 18" W	●	●+	●	●	●	●	●	●	●
DB21-3	Drawer Base Cabinet - 21" W	●	●+	●	●	●	●	●	●	●
DB24-3	Drawer Base Cabinet - 24" W	●	●+	●	●	●	●	●	●	●
DB27-3	Drawer Base Cabinet - 27" W	●	●+	●	●	●	●	-	-	-
DB30-3	Drawer Base Cabinet - 30" W	●	●+	●	●	●	●	●	●	●
DB33-3	Drawer Base Cabinet - 33" W	●	●+	●	●	●	●	-	-	-
DB36-3	Drawer Base Cabinet - 36" W	●	●+	●	●	●	●	●	●	●
DB30-2	2 Drawer Base Cabinet - 30" W	●	●+	●	●	●	●	●	●	●
DB36-2	2 Drawer Base Cabinet - 36" W	●	●+	●	●	●	●	●	●	●
CC30	Cooking Center Base Cabinet - 30" W	●	●+	●	●	●	●	●	●	●
FSB36	Farm Sink Base Cabinet - 36" W	●	●+	●	●	●	●	●	●	●
TRB-1	Trash Can Base w/ Full Ht Door -18" W	●	●+	●	●	●	●	●	●	●
TRB-2	Trash Can Base w/ Full Ht Door -18" W	●	●+	●	●	●	●	●	●	●
SB30	Sink Base Cabinet - 30" W	●	●+	●	●	●	●	●	●	●
SB33	Sink Base Cabinet - 33" W	●	●+	●	●	●	●	●	●	●
SB36	Sink Base Cabinet - 36" W	●	●+	●	●	●	●	●	●	●
SB42	Sink Base Cabinet w/ CS - 42" W	●	●+	●	●	●	●	●	●	●
SB48	Sink Base Cabinet w/ CS - 48" W	●	●+	●	●	●	●	●	●	●
CSF42	Corner Sink Front for 42" Space - 27" W	●	●+	●	●	●	●	●	●	●
CSF-FLOOR	Natural Corner Sink Front Floor 48" x 48"	●	●	●	●	●	●	●	●	●
BB42	Blind Base Cabinet for 42" to 45" Space - 36" W	●	●+	●	●	●	●	●	●	●
BB48	Blind Base Cab for 48" to 51" Space - 48" W	●	●+	●	●	●	●	●	●	●
ER33	Easy Reach Base Cabinet - 33" W x 33" D	●	●	●	●	●	●	●	●	●
ER36	Easy Reach Base Cabinet - 36" W x 36" D	●	●	●	●	●	●	●	●	●
DDB18	Desk Drawer Base - 18" W x 29.5" H x 24" D	●	●+	●	●	●	●	●	●	●
MBC30	Microwave Base Cabinet - 30" W	●	●+	●	●	●	●	●	●	●
<b>Tall Cabinets</b>										
P1884	Pantry - 18" W x 84" H	●	●	●	●	●	●	●	●	●
P1890	Pantry - 18" W x 90" H	●	●	●	●	●	●	●	●	●
P1896	Pantry - 18" W x 96" H	●	●	●	●	●	●	●	●	●
P2484	Pantry - 24" W x 84" H	●	●	●	●	●	●	●	●	●
P2490	Pantry - 24" W x 90" H	●	●	●	●	●	●	●	●	●
P2496	Pantry - 24" W x 96" H	●	●	●	●	●	●	●	●	●
P3090	Pantry - 30" W x 90" H	●	●	●	●	●	●	●	●	●
P3096	Pantry - 30" W x 96" H	●	●	●	●	●	●	●	●	●
OC3390	Oven Cabinet - 33" W x 90" H	●	●+	●	●	●	●	●	●	●
OC3396	Oven Cabinet - 33" W x 96" H	●	●+	●	●	●	●	●	●	●
OP3353	Oven Cabinet Overlay Panel - 33" W x 53" H	●	●	●	●	●	●	●	●	●
OCD337	Oven Cabinet Drawer	●	●+	●	●	●	●	●	●	●
<b>Vanities</b>										
V21	Single Door Vanity - 21" W	●	●+	●	●	●	●	-	-	-
V24-2	Double Door Vanity - 24" W	●	●+	●	●	●	●	●	●	●
V27	Double Door Vanity - 27" W	●	●+	●	●	●	●	●	●	●
V30	Double Door Vanity - 30" W	●	●+	●	●	●	●	●	●	●
V33	Double Door Vanity - 33" W	●	●+	●	●	●	●	●	●	●
V36	Double Door Vanity - 36" W	●	●+	●	●	●	●	●	●	●
VB12	Single Door Base Vanity - 12" W	●	●+	●	●	●	●	●	●	●
VB15	Single Door Base Vanity - 15" W	●	●+	●	●	●	●	●	●	●
VB18	Single Door Base Vanity - 18" W	●	●+	●	●	●	●	●	●	●

Item Code	Item Description	Shaker Sand	Shaker Designer White	Shaker Espresso	Brooklyn Modern Gray	Brooklyn Bright White	Brooklyn Slate	Lenox Country Linen	Lenox Canvas	Napa White
<b>Vanities</b>										
VDB12	Vanity Drawer Base - 12" W	●+	●+	●	●	●	●	●	●	●
VDB15	Vanity Drawer Base - 15" W	●+	●+	●	●	●	●	●	●	●
VDB18	Vanity Drawer Base - 18" W	●+	●+	●	●	●	●	●	●	●
VDB21	Vanity Drawer Base - 21" W	-	-	-	-	-	-	-	-	-
VDB24	Vanity Drawer Base - 24" W	●+	●+	●	●	●	●	●	●	●
VSB36	Vanity Sink Base - 36" W	●+	●+	●	●	●	●	●	●	●
VSB42	Vanity Sink Base - 42" W	●+	●+	●	●	●	●	●	●	●
VSB48	Vanity Sink Base - 48" W	●+	●+	●	●	●	●	●	●	●
VSBDR30	Vanity Sink Drawer Base Right - 30" W	●+	●+	●	●	●	●	-	-	●
VSBDL30	Vanity Sink Drawer Base Left - 30" W	●+	●+	●	●	●	●	-	-	●
VSBDR36	Vanity Sink Drawer Base Right - 36" W	●+	●+	●	●	●	●	●	●	●
VSBDL36	Vanity Sink Drawer Base Left - 36" W	●+	●+	●	●	●	●	●	●	●
DVSB54	Double Vanity SB - 54"W	-	-	-	-	-	-	-	-	-
EVSB54	Extended Vanity SB - 54" W	-	-	-	-	-	-	-	-	-
EVSB60	Extended Vanity SB - 60" W	-	-	-	-	-	-	-	-	-
KD24	Vanity Drawer - 24" W	●	●	●	●	●	●	●	●	●
KD36	Vanity Drawer - 36" W with Adjustable Sides	●	●	●	●	●	●	●	●	●
VSBOS36	Open Shelf Vanity SB - 36W	●	●	●	●	●	●	-	-	●
<b>Moldings and Trim</b>										
TKS8	Toe Kick	●	●	●	●	●	●	●	●	●
SCRIBE	Scribe	●	●	●	●	●	●	●	●	●
SHOE	Shoe Molding	●	●	●	●	●	●	●	●	●
FBM8	Furniture Base Molding	●	●	●	●	●	●	●	●	●
CM8	Traditional Crown Molding	-	-	-	●	●	●	●	●	●
BCM8	Large Crown Molding	-	-	-	●	●	●	●	●	●
RCM8	Royal Crown Molding	●	●	●	●	●	●	●	●	●
SCM8	Shaker Crown Molding	●	●	●	-	-	-	-	-	-
COM8	Cove Crown Molding	●	●	●	●	●	●	●	●	●
BAM8	Batten Molding	●	●	●	●	●	●	●	●	●
OCM8	Outside Corner Molding	●	●	●	●	●	●	●	●	●
LRM8	Traditional Light Rail	●	●	●	●	●	●	●	●	●
BEM8	Bottom Edge Molding (Narrow Light Rail)	●	●	●	●	●	●	●	●	●
<b>Fillers and Panels</b>										
BPLG4896	Back Panel (Long Grain) - 48" W x 96" H	●	●	●	●	●	●	●	●	●
BPSG9648	Back Panel (Short Grain) - 96" W x 48" H	-	-	●	-	-	●	-	-	-
BBP4842	Bead Board - 48" W x 42" H x 0.25" D	●	●	●	●	●	●	●	●	●
PSP4896	1/2" Thick Finished Plywood Filler	●	●	●	●	●	●	●	●	●
DWR3	Dishwasher End Panel	●	●	●	●	●	●	●	●	●
TEP3096	Tall End Panel	●	●	●	●	●	●	●	●	●
BCE1596	Book Case End - 1.5" W x 96" H x 15" D	●	●	●	●	●	●	●	●	●
F396	Filler - 3" W x 96" H	●	●	●	●	●	●	●	●	●
F696	Filler - 6" W x 96" H	●	●	●	●	●	●	●	●	●
OLF330	Overlay Filler - 3" W x 30" H	●	●	●	●	●	●	●	●	●
OLF336	Overlay Filler - 3" W x 36" H	●	●	●	●	●	●	●	●	●
OLF342	Overlay Filler - 3" W x 42" H	●	●	●	●	●	●	●	●	●
OLF630	Overlay Filler - 6" W x 30" H	●	●	●	●	●	●	●	●	●
FF396	Fluted Filler - 3" W x 96" H	-	-	-	●	●	●	●	●	●

Item Code	Item Description	Shaker Sand	Shaker Designer White	Shaker Espresso	Brooklyn Modern Gray	Brooklyn Bright White	Brooklyn Slate	Lenox Country Linen	Lenox Canvas	Napa White
<b>Decorative Accessories</b>										
CORSM	Basic Medium Corbel - 10.5" H	●	●	●	●	●	●	●	●	●
CORT	Transitional Corbel	●	●	●	●	●	●	●	●	●
TBUNFOOT	Traditional Bunfoot	●	●	●	●	●	●	●	●	●
TBUNFOOT2	Transitional Bunfoot	●	●	●	●	●	●	-	-	●
TPOSTP3	Turned Post - 3" W x 35.5" H	●	●	●	●	●	●	●	●	●
TPOSTP5	Turned Post - 5" W x 35.5" H	●	●	●	●	●	●	●	●	●
VFURN37	Furniture Valance - 37" W	●	●	●	●	●	●	●	●	●
VRP42	Raised Panel Valance - 42" W	-	-	-	●	●	●	●	●	●
VRP48	Raised Panel Valance - 48" W	-	-	-	●	●	●	●	●	●
DWP1215	Decorative Wall Panel - 12" W x 15" H	●	●	●	●	●	●	-	-	●
DWP1230	Decorative Wall Panel - 12" W x 30" H	●	●	●	●	●	●	●	●	●
DWP1236	Decorative Wall Panel - 12" W x 36" H	●	●	●	●	●	●	●	●	●
DWP1242	Decorative Wall Panel - 12" W x 42" H	●	●	●	●	●	●	●	●	●
DWP2415	Decorative Wall Panel - 24" W x 15" H	●	●	●	●	●	●	-	-	●
DWP2430	Decorative Wall Panel - 24" W x 30" H	●	●	●	●	●	●	●	●	●
<b>Attachments and Inserts</b>										
ROT15-SC	Natural Roll Out Tray for 15" Space (2/pkg)	●	●	●	●	●	●	●	●	●
ROT18-SC	Natural Roll Out Tray for 18" Space (2/pkg)	●	●	●	●	●	●	●	●	●
ROT21-SC	Natural Roll Out Tray for 21" Space (2/pkg)	●	●	●	●	●	●	●	●	●
ROT24-SC	Natural Roll Out Tray for 24" Space (2/pkg)	●	●	●	●	●	●	●	●	●
ROT27-SC	Natural Roll Out Tray for 27" Space (2/pkg)	●	●	●	●	●	●	●	●	●
ROT30-SC	Natural Roll Out Tray for 30" Space (2/pkg)	●	●	●	●	●	●	●	●	●
ROT33-SC	Natural Roll Out Tray for 33" Space (2/pkg)	●	●	●	●	●	●	●	●	●
ROT36-SC	Natural Roll Out Tray for 36" Space (2/pkg)	●	●	●	●	●	●	●	●	●
LSK	Natural Lazy Susan Kit (2/pkg)	●	●	●	●	●	●	●	●	●
TCKK	Trash Can Insert for B18 with 2 35 QT Trash Cans	●	●	●	●	●	●	●	●	●
SRI9	Natural Spice Rack Insert for B9 Drawer	●	●	●	●	●	●	●	●	●
CDI14	Natural Cutlery Drawer Insert for B15/B18	●	●	●	●	●	●	●	●	●
CDI20	Natural Cutlery Drawer Insert for B21/B24	●	●	●	●	●	●	●	●	●
SRD12	Natural Spice Rack Door Mount for 18" Door	●	●	●	●	●	●	●	●	●
SRD15	Natural Spice Rack Door Mount for 21" Door	●	●	●	●	●	●	●	●	●
STI14	Natural Spice Tray Drawer Insert for B15/B18	●	●	●	●	●	●	●	●	●
STI20	Natural Spice Tray Drawer Insert for B21/B24	●	●	●	●	●	●	●	●	●
SWR3012	Stemware Rack	●	●	●	●	●	●	●	●	●
<b>Miscellaneous Parts</b>										
SHELF1296	Natural Shelf - 96" W x 12" D	●	●	●	●	●	●	●	●	●
SHELF1296	Painted/Stained Shelf - 96" W x 12" D	●	●	●	●	●	●	●	●	●
SHELF2496	Natural Shelf - 96" W x 24" D	●	●	●	●	●	●	●	●	●
GLZPEN	Glaze Pen	-	-	-	-	-	-	●	-	-
GLZBRUSH	Glaze Brush	-	-	-	-	-	-	●	-	-
SPRAYCAN	Aerosol Spray Can	●	●	●	●	●	●	●	●	●
TUKIT	Touch Up Kit	●	●	●	●	●	●	●	●	●
YN-PAB	Plastic Assembly Blocks (100/pkg)	●	●	●	●	●	●	●	●	●
YN-BRACKETS	Metal Assembly Bracket	●	●	●	●	●	●	●	●	●
YN-SOFTCLOSE	Soft Close Hinge	●	●	●	●	●	●	●	●	●
YN-ERHINGE-SET	Easy Reach Hinges (Set of 4)	●	●	●	●	●	●	●	●	●
YN-SOFTCLOSE-CW	Soft Close Corner Wall Hinge	●	●	●	●	●	●	●	●	●

