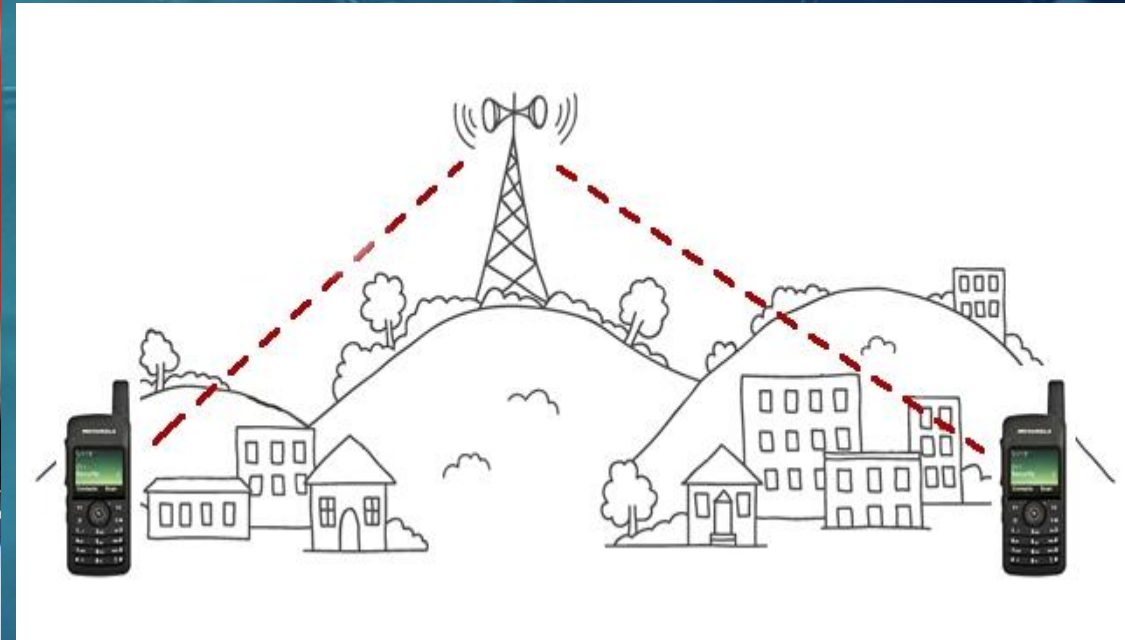
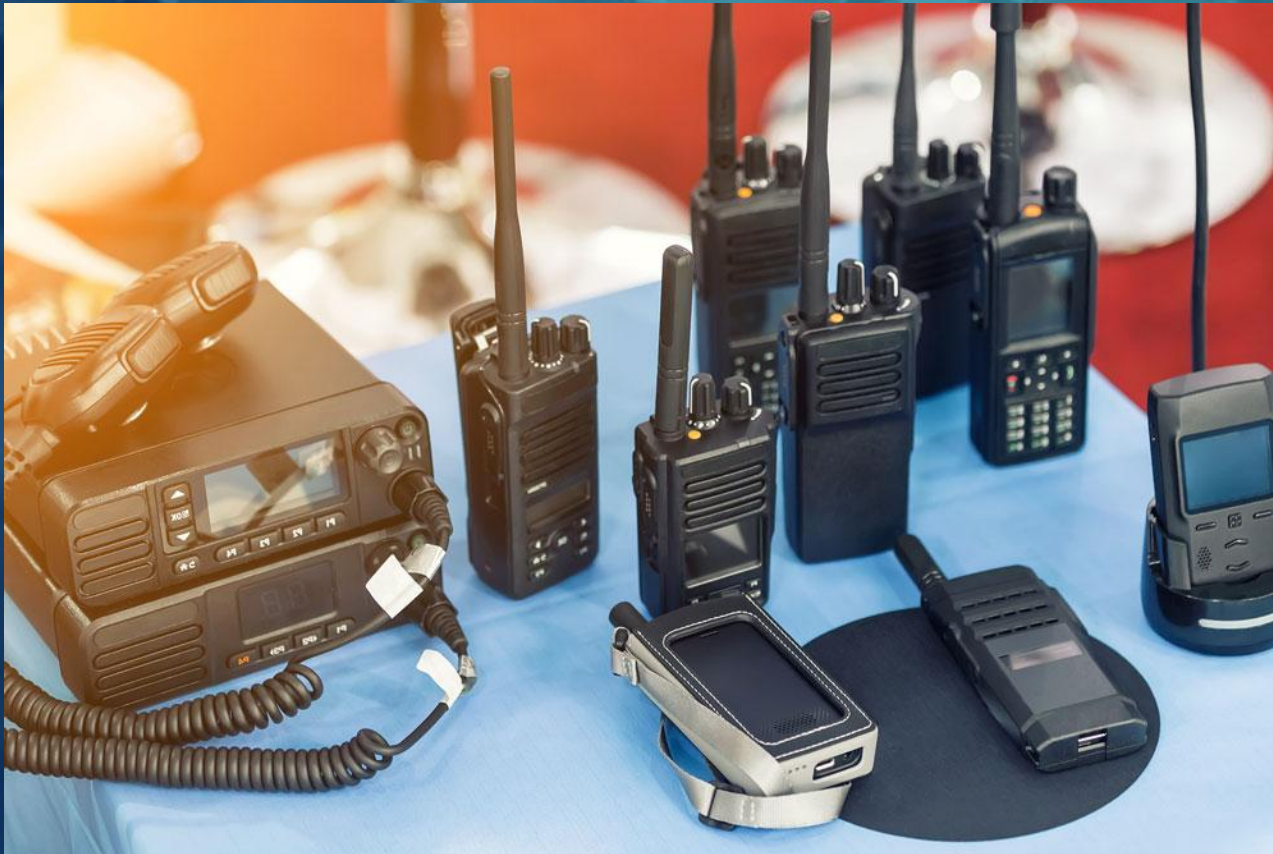


Emergency Communication



Communication Options

- ▶ Cell phone: May not function widespread emergency
- ▶ Radio
 - ▶ **FRS**: radio to radio walkie-talkie. Range—1-2 miles, 22 channels
 - ▶ **GMRS**: radio to radio and repeater capable. Range 2-5 miles, 22 channels and 7 repeater channels range up to 80 miles. FCC License all family can use, no test.
 - ▶ **Ham Radio**: radio to radio and repeater. Regional, area, continent, worldwide range. FCC license each, multiple levels and tests required.
 - ▶ **Meshtastic**: Phone to phone text, no cell network. 915 MHz US, radio frequency as medium, no cell towers. Uses app on phone through Bluetooth to send text. Mesh network. Range depends on number of units/size of mesh network. Currently, Walla Walla, Yakima, Spokane.

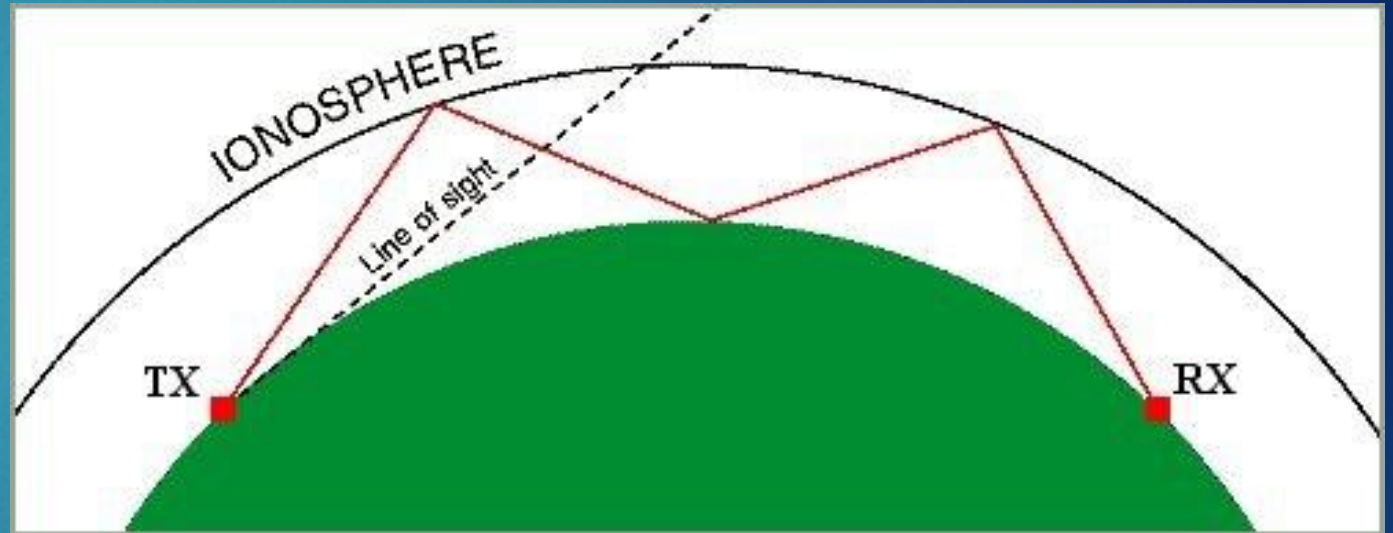
GMRS Platform UHF

- ▶ Simplex and repeater capable up to 80 miles.
- ▶ FCC transmit 22 channels, UHF 462.5 MHz to 462.7 MHz
- ▶ Stake repeater ch 17 (3), 462.6000 MHz +5MHz offset CTCSS 103.5. Chandler Butte
- ▶ Benton City Repeater ch 15 (1), 462.5500 +5MHz offset CTCSS 136.5
- ▶ Prosser Repeater ch 22 (8), 462.7250 +5 MHz , CTCSS 88.5
- ▶ FCC license, no test, all family can use
- ▶ Baofeng GM 15 pro repeater programmable handheld.
- ▶ Yaggi antenna needed if blocked by Candy and Red Mtn



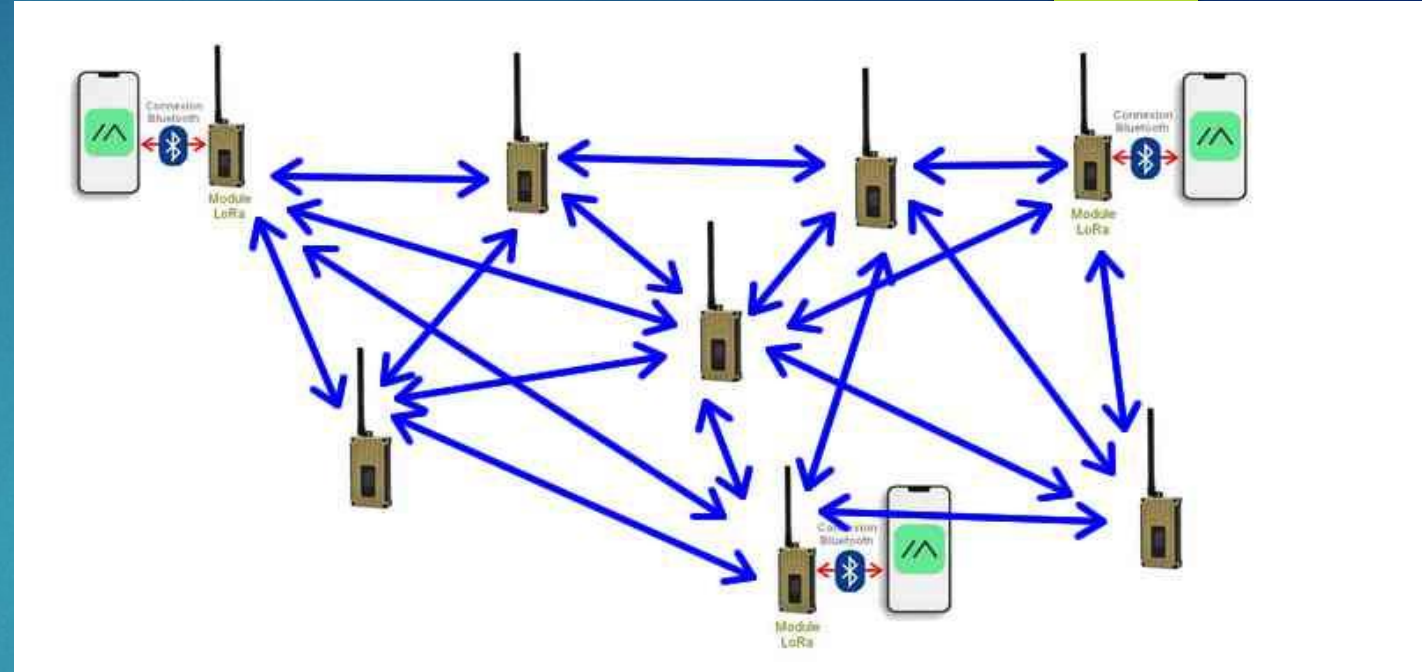
Ham Radio: HF VHF UHF

- ▶ Many more frequencies from 1.8 MHz to 1240.0 MHz. HF, VHF, UHF.
- ▶ Range: up to Worldwide
- ▶ Repeaters can be linked for VHF and UHF. HF frequencies use the atmosphere and earth to “bounce” or skip.
- ▶ 3 levels of licensing requiring testing, individual only.
Technician, General, Extra



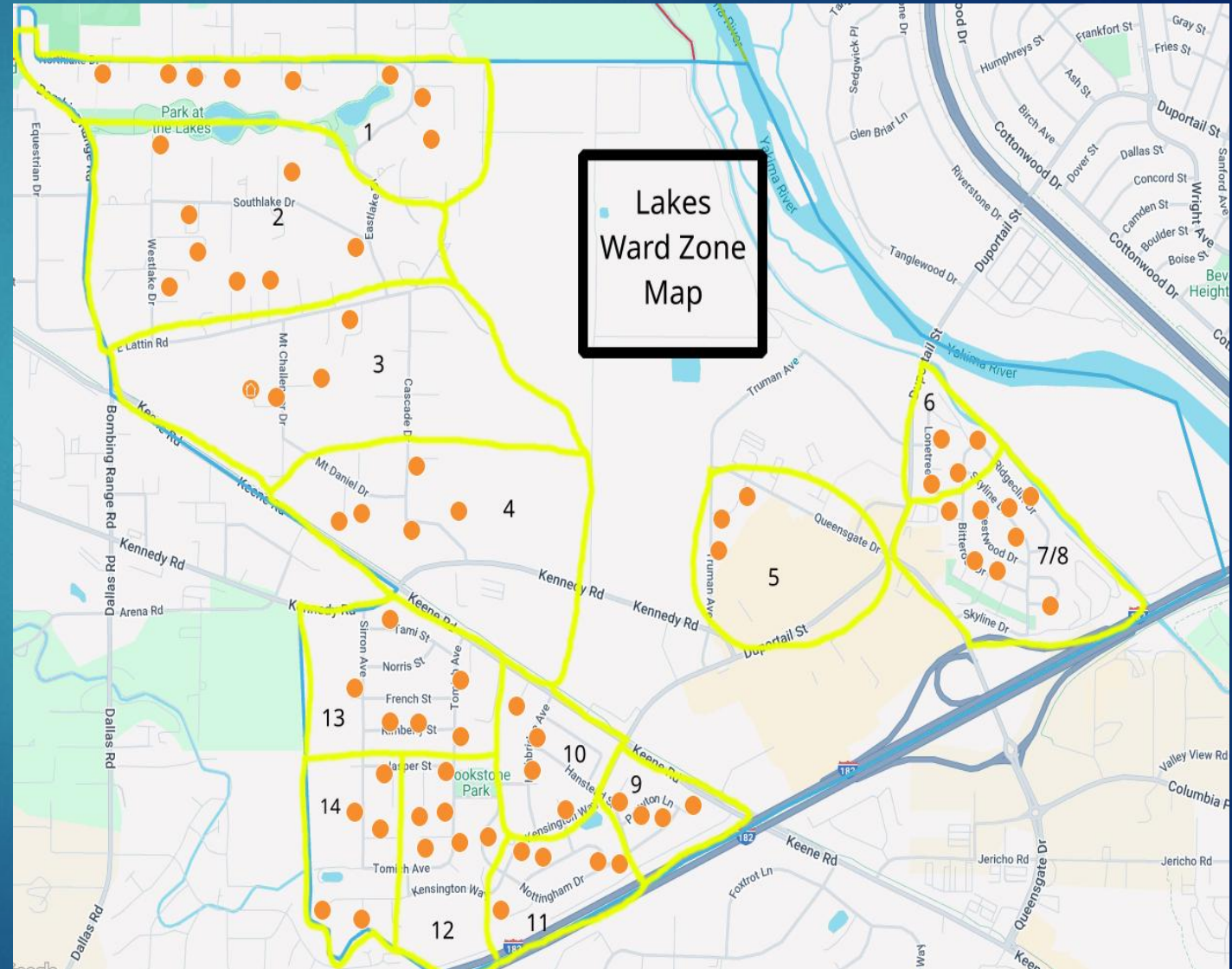
Meshtastic: 915MHz

- Phone to phone text, no cell network. 915 MHz US, radio frequency as medium, no cell towers. Uses app on phone through Bluetooth to send text. Mesh network.
- Range depends on number of units/size of mesh network. Currently, Walla Walla, Yakima, Spokane
- Conversations can be large group and made private



Ward Emergency Response Plan

- ▶ Organize Ward into districts with captains called in each of the districts.
- ▶ In an active emergency, captains are to visit each household in the district to check on their status.
- ▶ Captains communicate to Ward Emergency com specialist who communicate and coordinate with Ward leadership.
- ▶ Ward E com specialist communicates to Stake E com.
- ▶ Phone or radio, radio covers many people at one time



Practice nets

- ▶ Nets are organized practice radio check-ins to test equipment and propagation.
- ▶ A net controller helps to coordinate discussion.
- ▶ Nets:
 - ▶ Ward nets: assigned simplex or their own repeater
 - ▶ Stake nets: GMRs repeater 462.6000MHz, CTCSS 103.5. **Each Saturday 8pm**
 - ▶ Regional: Kennewick coordinating council, 2 meter repeater 146.6400 (-600) CTCSS 100. **Each Sunday at 6:30 pm. Any** Ham license.
 - ▶ Walla Walla, Yakima, Wenatchee, Hermiston
 - ▶ Greater NW area: 80 meter 3.815 Mhz. Mercury NW net, **Any** general or extra ham license. **Each Monday 8 pm, Saturday 8 am.**
 - ▶ From Canada to CA to OR, WA, ID, UT.

