

# PARENT'S HANDBOOK

*Prospectus for your child's future*



# TABLE OF CONTENTS

Our History	2
Facility, Curriculum, Approach	3
Why Choose Us?	8
Teachers Training	12
Parental Engagement	13
Admission Process	14
Emergency & Contingency Plan	16
Future Goals & Objectives	17

---

# WELCOME MESSAGE



## Syed Azfar Rizvi Founder

---

As we continue our journey, we carry forward the enduring vision of our esteemed founder, Syed Azfar Rizvi, a tireless educationist whose life was dedicated to the transformative power of learning. Azfar's belief was simple yet profound - "The child is the heart of education." This guiding principle led him to pioneer a child-centric approach at Camelot Ludus, replacing the traditional teacher-centric paradigm.

His legacy serves as our compass, inspiring us to cultivate an environment where each child is the protagonist of their learning journey, fostering curiosity, creativity, and independent thinking. In this journey, we appreciate your unwavering support as we strive to create an environment that encourages children to explore, imagine, and grow. Here's to a future filled with curiosity, discovery, and a lifelong love for learning, in the spirit of Azfar's cherished ideals.

# OUR HISTORY

With a rich history spanning over 40 years, our network stands as an emblem of educational excellence in Karachi. Born out of a vision to cultivate a generation of well-rounded and forward-thinking learners, the system has grown extensively, now boasting multiple campuses sprawled across the vibrant city.

## 1983

### **Dhaka Group of Schools**

Each campus of the Dhaka Schooling System embodies a commitment to quality education and holistic development. Over the past four decades, thousands of students have embarked on their academic journey under the Dhaka banner, benefiting from a nurturing environment that inspires curiosity, instills values, and ignites a passion for lifelong learning.

## 1992

### **St. Gregory's High School**

St. Gregory's High School in Gulshan, Karachi, champions comprehensive education with O-level and AKU-EB curriculum. Known for academic rigor, it nurtures students intellectually, emotionally, and socially. This robust education approach prepares students to be confident, competent, and compassionate global citizens.

## 2021

### **Camelot Ludus**

Camelot Ludus, based in Gulshan, Karachi, is a preschool and kindergarten with a unique child-centric approach. Drawing from global best practices, it blends play, activities, and experiential learning to foster curiosity, creativity, and confidence in young minds. With a warm environment reminiscent of home, it ensures a child's first step into education is secure, engaging, and meaningful.





# THE FACILITY

## LIBRARY

Our library is a quiet, welcoming space filled with a wide range of books and digital resources. It offers a comfortable and stimulating environment for students to explore their love of reading, conduct research, and enhance their literary skills.

## PARENTS HARBOR

A space designed for relaxation and social interaction, the Parents Harbor is a comfortable setting where parents can work, socialize, perhaps play a game of scrabble or read an interesting magazine.

## ART LAB

The Art Lab is a creative hub where students can explore various art forms and mediums. It's equipped with necessary materials for drawing, painting, sculpture, and other forms of visual arts. It encourages creativity, innovation, and a unique expression of ideas.

## LEARNING STUDIO

This is a flexible and modern educational space designed to facilitate diverse teaching and learning methods. It encourages active learning, collaboration, and problem-solving, and is equipped with resources to accommodate different learning styles.

## ZEN ZONE

The Zen Zone is a peaceful and tranquil space designed to promote mindfulness, relaxation, and mental well-being. It's a retreat for students to practice yoga, meditation, and other mindful activities, helping them to relieve stress and improve focus.





# THE FACILITY

## MUSIC ROOM

An acoustic haven designed to stimulate creativity and foster a love for melodies. Here, children can explore rhythms, tunes, and harmonies under the guidance of experienced instructors.

## THEATRE ROOM

An expressive space for children to immerse themselves in the vibrant world of drama. This room is a platform for students to showcase their theatrical talents, build confidence, and understand the dynamics of performing arts.

## OUTDOOR PLAY AREA

A dynamic space designed for physical fitness with a cushioned floor and ample room for movement, it offers the perfect environment for a variety of fitness activities, from wall-climbing to swinging and among other activities.

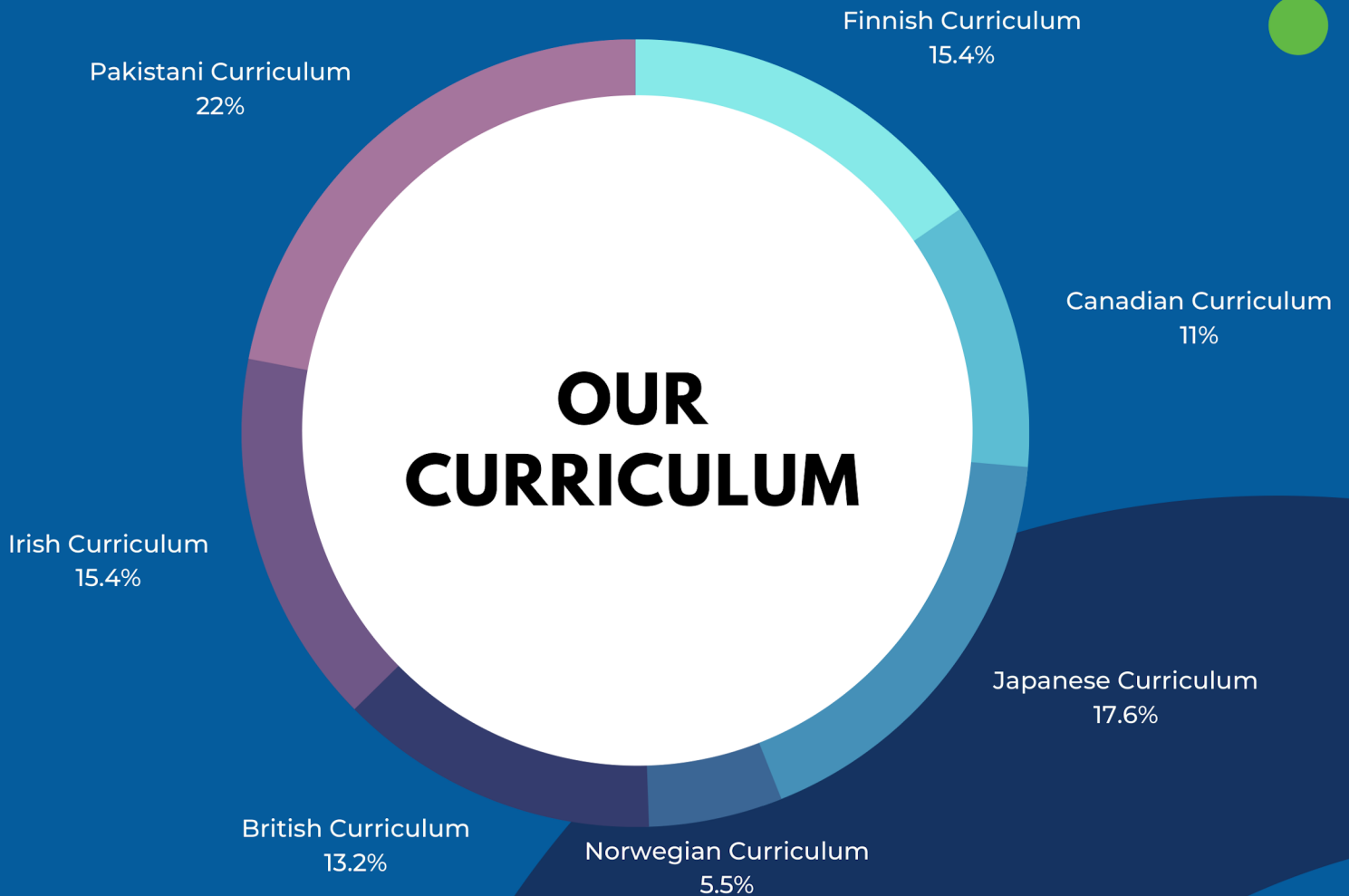
## PLAN-DO-READ (PDR) ROOM

Our Learning Spaces are modern, flexible classrooms designed to cater to different learning needs that are equipped with age-appropriate learning materials, fostering an engaging and learning experience. These rooms promote creativity, curiosity, and intellectual exploration.

## CULINARY LAB

A practical learning space where students can learn the basics of cooking and baking in a safe, supervised environment. The lab is equipped with child-friendly cooking appliances and utensils. Here, students don't just learn to cook; they also understand the science behind it, promoting a healthy relationship with food from an early age.

# OUR CURRICULUM

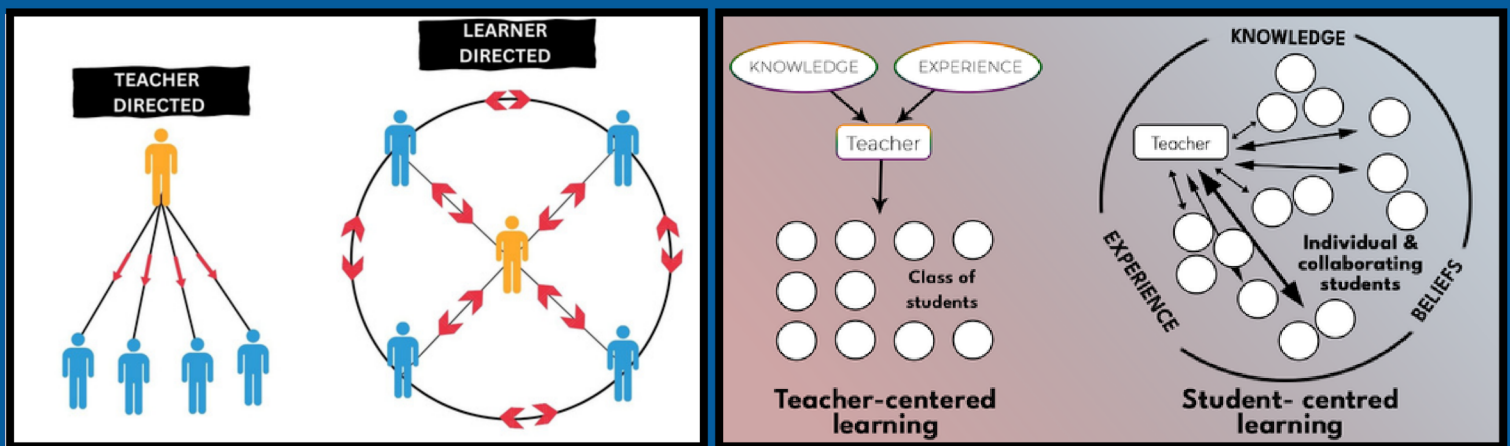


- ISLAMIC VALUES & ETHICS
- LANGUAGE & SPEECH
- PLAY BASED LEARNING
- STUDENT CENTRIC LEARNING
- COGNITIVE DEVELOPMENT
- CRITICAL THINKING
- DILIGENCE & PERSEVERANCE



# OUR APPROACH

## TEACHER VS. STUDENT CENTERIC STYLE OF LEARNING



### Elements

### Teacher Centered

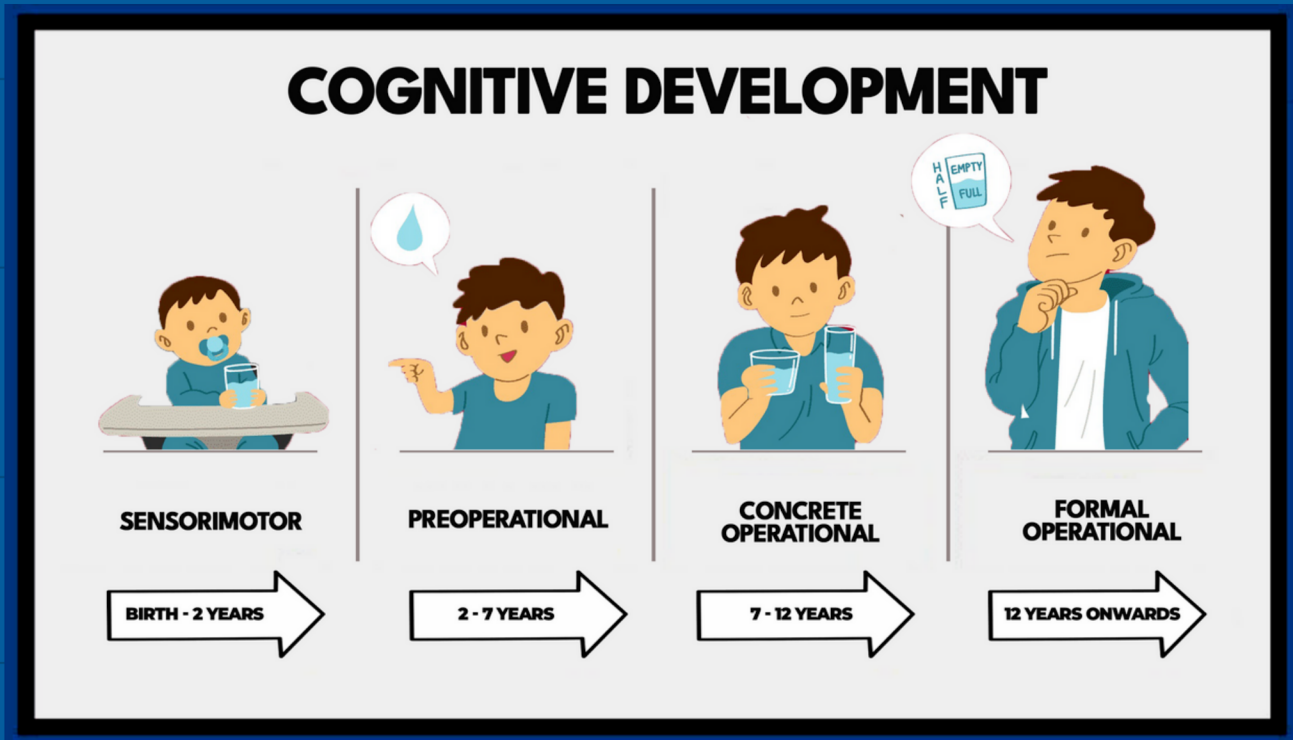
### Student Centered

• <b>Knowledge</b>	Transmitted from Instructions	Constructed by Students
• <b>Academic Culture</b>	Competitive, Individualistic	Collaborative, Supportive
• <b>Student Participation</b>	Passive	Active
• <b>Emphasis</b>	Learning Correct Answers	Developing Deeper Understanding
• <b>Role of Teacher</b>	Leader/Authority	Facilitator/Partner in Learning
• <b>Role of Assessment</b>	Few tests, mainly for grading	Many tests, for ongoing feedback
• <b>Assessment Method</b>	One-dimensional Testing	Multidimensional Testing

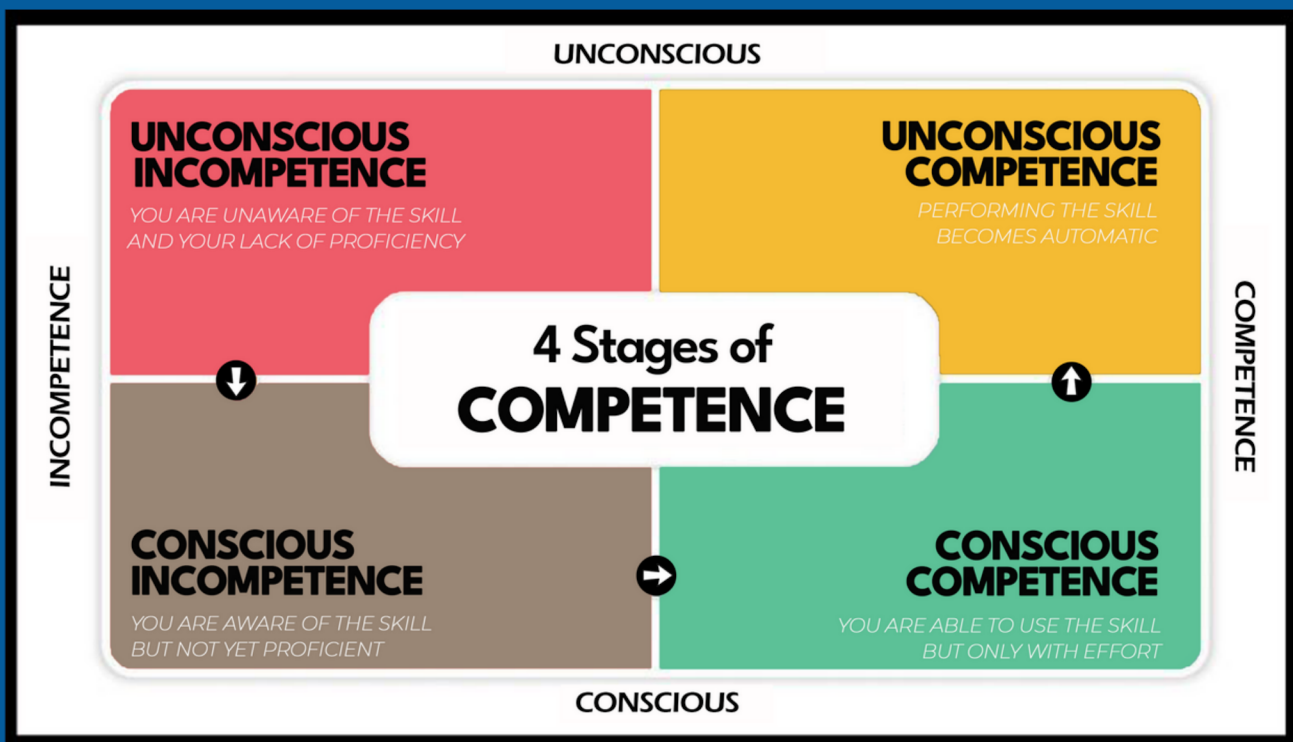


# THEORY & PRACTICE

## THEORY OF COGNITIVE DEVELOPMENT, JEAN PIAGET



## STAGES OF COMPETENCE, NOEL BURCH



# WHY CHOOSE US?

# OUR CURRICULUM

## CURRICULUM & APPROACH

Our pedagogy inspired by experiential learning embraces a progressive blend of play and activity-based strategies to nurture young minds.

## OVERVIEW OF OUR PLAY AND ACTIVITY-BASED CURRICULUM:

We've designed an engaging curriculum that harnesses the power of play and active learning, encouraging curiosity, creativity, and critical thinking.

## IMPORTANCE OF EXPERIENTIAL LEARNING:

Experiential learning forms the backbone of our approach, fostering independent thought and skills through real-life experiences and hands-on activities.

# WHY CHOOSE US? **OUR PEDAGOGY**

## **OUR PEDAGOGY DIFFERENTIATING BETWEEN CHILD-CENTRIC AND TEACHER-CENTRIC APPROACH:**

---

We prioritize a child-centric approach, focusing on the unique needs, interests, and pace of each learner, versus a traditional teacher-centric approach. It embraces a progressive blend of play and activity-based learning activities to cultivate mindful thinking.

## **CURRICULUM GOALS AND OBJECTIVES:**

---

Our primary aim is to curate well-rounded individuals, igniting a lifelong love for learning, encouraging resilience, and instilling critical life skills. Our curriculum aims to inculcate sense of reasoning and logic problem solving through elements of play-based education and experiential learning

# MONITORING & EVALUATION

## ASSESSMENT & FEEDBACK

We firmly believe in the importance of consistent, and personalized feedback. Every week, parents receive a comprehensive report detailing their child's progress across various learning domains. This goes beyond academic performance and includes social-emotional growth, creativity, physical development, and more.

## MULTIDIMENSIONAL APPROACH TO ASSESSMENT

We employ a multidimensional approach to assessment that includes observations, project-based evaluations, teacher-student interactions, and reflections on learning. This robust system helps us understand each child's unique learning journey in a holistic manner.

## ON-GOING FEEDBACK FOR CONTINUOUS IMPROVEMENT

We maintain an ongoing dialogue with both students and parents, offering insights, celebrating successes, and identifying opportunities for growth. This approach allows us to continuously fine-tune our teaching strategies to better suit each child's learning needs and potentials.



# LEARNING ENVIRONMENT

## FLEXIBLE TEACHING METHODS

Every child learns in their own unique way. Our teachers are skilled at adapting their teaching methods to cater to the diverse learning capabilities of our students. Whether it's visual, auditory, kinesthetic or a blend of learning styles, we ensure that every child feels supported and engaged in their learning journey.

## DIVERSITY AND INCLUSION

We honor and value each child's unique skills, talents, and learning styles. We make concerted efforts to include every child in all aspects of school life, promoting an inclusive and diverse learning community.

## COLLABORATIVE AND COMPASSIONATE LEARNING

Our teachers and students work together in an environment of mutual respect and understanding. We foster a culture where students learn to appreciate each other's perspectives, work together to solve problems, and support one another in their learning journey.

# TEACHERS TRAINING

## PERIODIC TRAINING & CHANGES IN CURRICULUM

Our teaching staff undergo regular, comprehensive training sessions, ensuring they stay current with pedagogical developments and best practices in early childhood education. As a part of this process, they are also proactively trained to adapt to any changes in the curriculum. We believe in integrating Islamic values and teachings in our pedagogical approach, and our training sessions reflect this ethos.

## PARTNERSHIP WITH AKU-IED

We have a strategic partnership with the Aga Khan University Institute for Educational Development, They facilitate regular training and professional development sessions for our staff, ensuring our teaching practices align with internationally recognized standards.

## INTERNATIONAL ONLINE TRAINING AND COURSES

In our commitment to providing a world-class education, we leverage various global resources for staff development. With access to Massive Open Online Courses (MOOC) through renowned education platforms, our teachers are trained and equipped with a diverse set of skills and knowledge to effectively guide our students' journeys.

# PARENTAL ENGAGEMENT

## WEEKLY LESSON PLAN SHARING

---

Each week, we share our detailed lesson plans with parents. This provides an overview of the concepts that will be taught, the methods that will be employed, and the skills that your child will develop. We believe this transparency enables parents to be actively engaged in their child's learning process.

## LESSON REINFORCEMENT

---

We encourage parents to reinforce the week's lessons at home in creative and engaging ways. This might involve practical applications of concepts, discussions, or even related games and activities. This reinforcement not only solidifies understanding but also provides opportunities for bonding and shared learning experiences.

## PARENT CONFERENCE & CONTRIBUTION

---

These meetings provide an opportunity to discuss your child's progress, address any concerns, and plan strategies for future development. We believe that this continuous communication forms the bedrock of effective education.

# ADMISSION PROCESS

Step 1	Sign-Up
Step 2	Interview
Step 3	Observation/Assessment
Step 4	Result
Step 5	Fee Payment
Step 6	Enrollment



# CLASS BREAKDOWN

Play Group	1.5 - 2.5 years old
Reception	2.5 - 3.5 years old
Early Year Program	3.5 - 5.5 years old
Primary Year Program	5.5 years onwards

# FEE STRUCTURE

	Play Group	Reception, Early Years, Primary Years
Registration Fee	1,500	2,500
Admission Fee	15,000	50,000
Security Deposit*	33,000	30,000
Annual Charges	16,500	20,000
Monthly Fee	16,500	20,000

\*Only security deposit is refundable provided all prerequisite have been met and approved by the school.

# **EMERGENCY & CONTINGENT PLANNING**

## **DIETARY NEEDS & ALLERGIES**

Upon admission, we meticulously record each child's health history, including any known allergies. Should your child have specific dietary needs or allergies, this information should be conveyed to the school prior to admission so it can be addressed appropriately.

## **CPR, FIRST AID & FIRE SAFETY**

Our teachers are trained in first aid CPR to promptly and effectively respond to medical emergencies. Routine refreshers are held to ensure that these life-saving skills remain up-to-date. We are also equipped with modern firefighting equipment and adhere to strict fire safety protocols. Regular fire drills are conducted to ensure staff and students are familiar with evacuation procedures. First Aid kits are always readily available at the campus.

## **MEDICAL EMERGENCY**

If necessary, we will approach Emergency Services. As a precautionary measure, we maintain child's emergency contact information. Parents/guardians or emergency contact will be informed immediately.

# Future Goals & Objectives



## IB ACCREDITATION

We aspire to become an International Baccalaureate school, offering a globally recognized, enriching curriculum.



## HIGH SCHOOL EXPANSION

We plan to extend our unique approach to high school education, ensuring a continuous learning journey.



## REVOLUTIONIZING EDUCATION

We are committed to reshaping Pakistan's schooling culture, with our innovative, child-centric methodology.



## CULTIVATING LEADERS

We aim to foster leaders who excel academically and strive to make a difference in the world.



## EMOTIONS & CULTURE

We prioritize nurturing emotionally resilient individuals who are connected to their cultural heritage and are responsible citizens.



## COMMUNITY ENGAGEMENT

We envision strengthening our ties with the community, fostering partnerships that enrich our students' learning experiences and contribute positively to society.

# STAY IN TOUCH WITH US!

If you are interested in enrolling your child in our school, please scan the QR Code and submit the form. Our team will get back to you after submission.



+92-344-4676-887



info@camelot.education  
admissions@camelot.education



www.camelot.education



51B, Block 3, Gulshan-e-Iqbal, Karachi, Sindh



camelotludus1



camelotludus



camelotludus



SCAN ME