

JUNE 2024



Greenhouse in the Snow



Table of Contents

1

Contact Information

2

Greenhouse in the Snow Kit

5

Backyard Free-Standing Greenhouse

6

Lean-to Greenhouse

7

Automatic Vent System

9

Evaporative Cooling Wall

10

Retaining Wall Planters

11

Single Wall Planter

12

Liquid-to-Air
Geothermal System

14

Blower Box

15

Engineered Retaining
Wall Sets

16

Wind Kit



Table of Contents

17

Winter/Summer Thermostat

18

Horizontal Air Flow Fan

19

Hobby House Fan



Greenhouse in the Snow

Contact Information



Greenhouse in the Snow
1114 West 2nd St.
Alliance, NE 69301



308-760-9718



info@greenhouseinthesnow.com



www.greenhouseinthesnow.com



Come see us in person!
Book a tour of the
greenhouse via our
website or give us a call
and schedule today! It is
definitely worth the visit :)



Greenhouse in the Snow

Geothermal Greenhouse Kit

Geothermal Greenhouse Kit



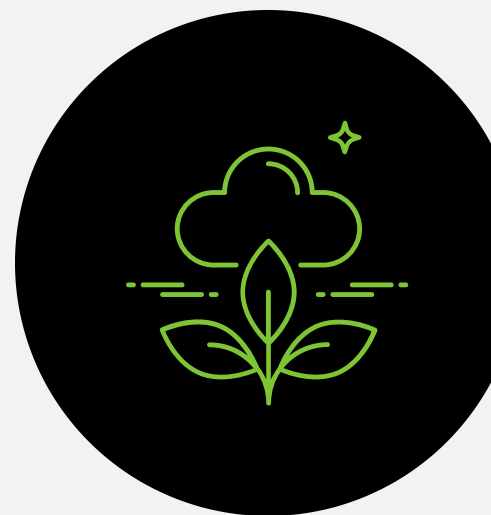
All kits are 17' wide & galvanized



The smallest kit offered is 36' long & we increase in 6' increments in length



96' and 102' long are the most efficient sizes



36' - 48' @ \$249/lin. ft

54' - 150' @ \$197/lin. ft



**Note:
36' - 48'
will only
be sold
with
Liquid to
Air
Systems
ONLY!**



Cheaper than sourcing the same size of conventional greenhouse **PLUS** the added bonus of heating/cooling efficiency and **YEAR-ROUND** growing ability!

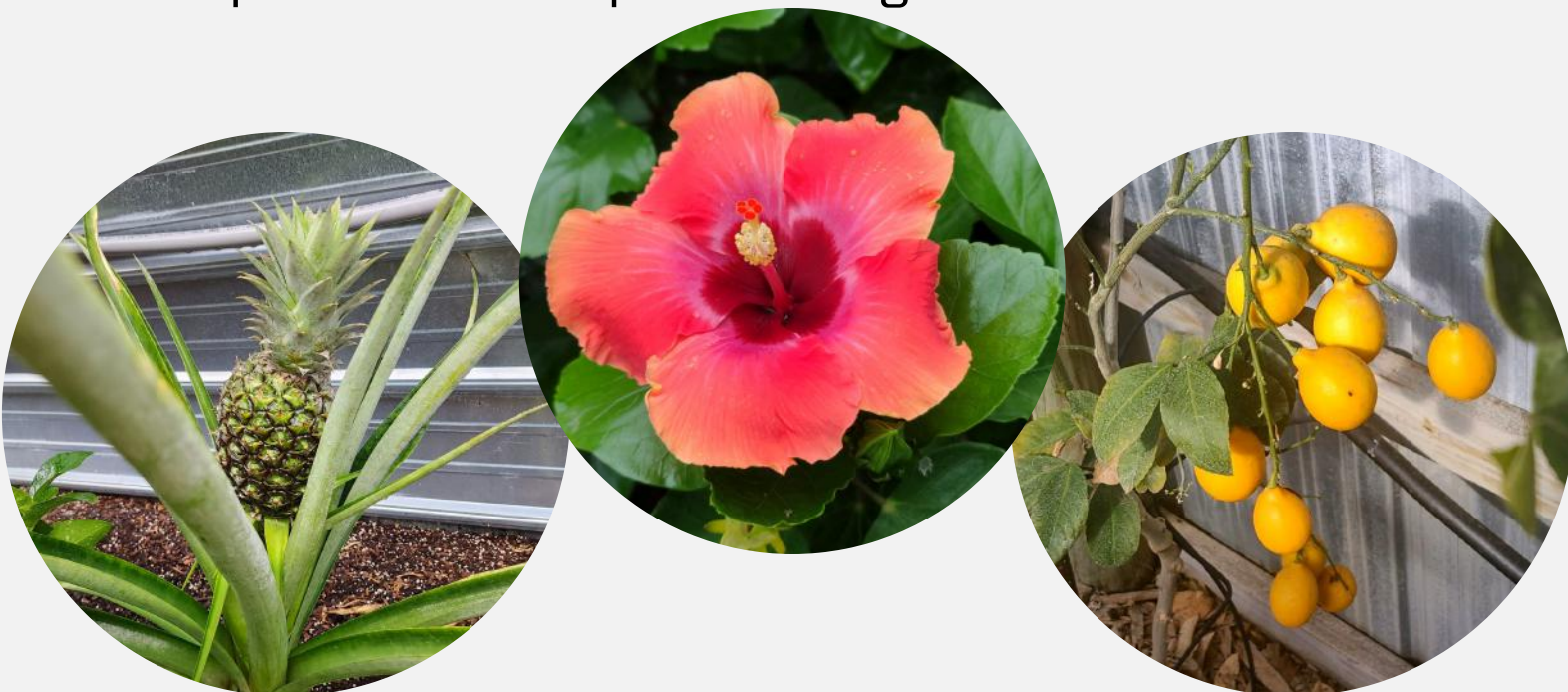


Kits contain:

- the complete metal frame
- polycarbonate sheeting
- all screws/washers & joints/plates to put it together
- a complete step-by-step guide
- unlimited tech support via phone & email
- a materials list of the items you need to purchase locally to finish your greenhouse build



The kit does not include the blowers with motors and thermostats for the air-to-air system tubes, **HOWEVER** we do keep them in stock, and they are available for purchase as an option on the greenhouse kit.





We also provide a **materials list** of items that **you need to purchase locally** like tubes, doors, etc. This list is available upon request before purchase and is also in the step-by-step guide.



Blowers with motors & thermostats, freight and many other options are offered with the greenhouse kits for additional costs.

Contact us today to request your quote!

You can request via email at:

info@greenhouseinthesnow.com

Via phone at **308-760-9718**

Or on our website at:

www.greenhouseinthesnow.com/request-a-quote

Backyard **Free-Standing Greenhouse**

Free-Standing Greenhouse



All kits are 17' wide & galvanized

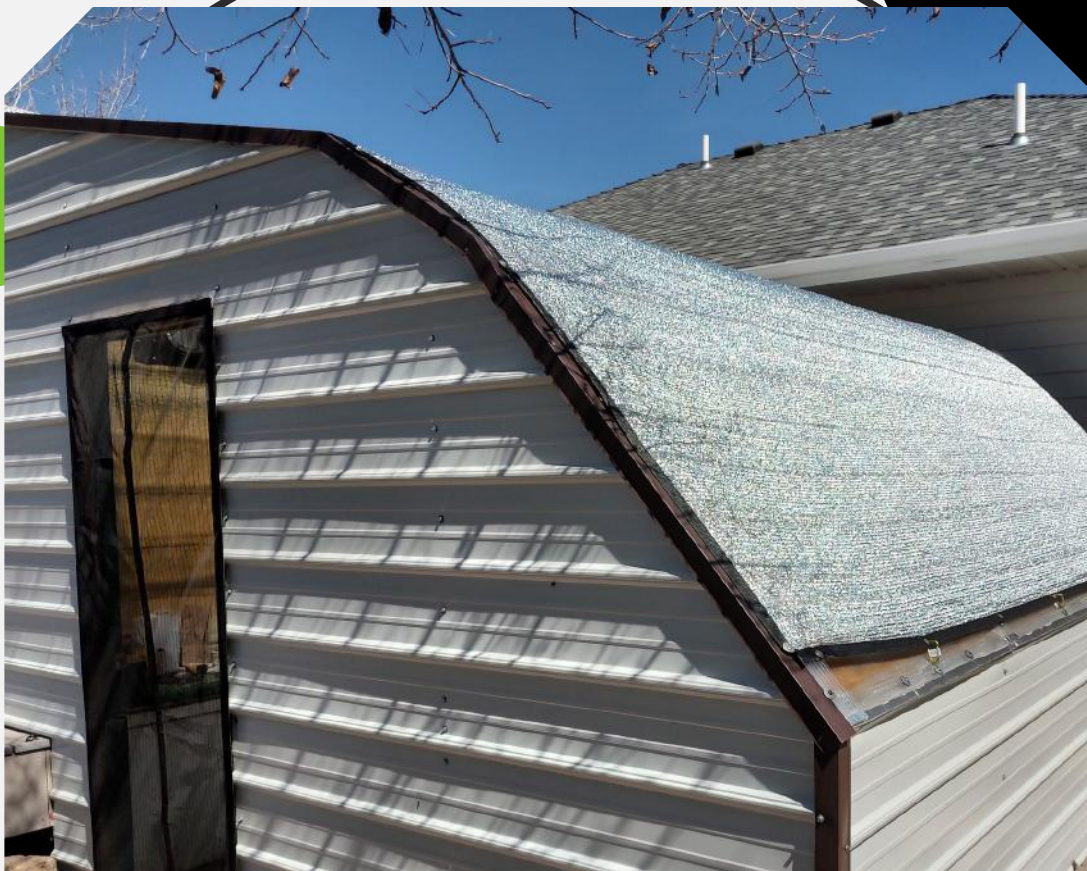


Kits are offered in 6' increments beginning at 12' long - so it can even be used in your backyard!



Stands alone & built at ground level - more of a traditional greenhouse

\$249/lineal foot



Lean-to Greenhouse

Lean-to Greenhouse



All kits are 12' wide & galvanized



Kits are offered in 6' increments beginning at 12' long - so it can even be used in your backyard!



Made for "leaning" the greenhouse against side of a building

\$242/lineal foot



Automatic Vent System

View a DEMO at <https://photos.app.goo.gl/cu1y1n5GbscRzyZ36>

Automatic Vent System (2 vents/system)



One vent on each end of greenhouse



Controlled by thermostat (wifi compatible) to automatically open and shut as needed & comes with all controls



Pan is not flat, so it sheds water

\$5,371.12*

*NOTE: Does not include shipping. Shipping is calculated at time of shipment.



*Prices Subject to Change at Any Time



If purchasing an evaporative cooling system **AND** **automatic vent**, you will need a large fan to place in the automatic vent due to not being able to put the ventilation fans in the wall like normal.



Pricing for the 42" fan is below plus the adapter kit for placing it in the vent.

\$1,604.06*

fan

+

\$250*

**adapter
kit**



*NOTE: Does not include shipping. Shipping is calculated at time of shipment.

*Prices Subject to Change at Any Time

Evaporative Cooling Wall

Evaporative Cooling Wall



Uses combination of air, water, and evaporation to add cool, humid air to the greenhouse environment



Ships straight from manufacturer



The heat of the greenhouse is used to evaporate water, turning it into vapor and assisting in cooling the greenhouse

\$3,199.75



*Prices Subject to Change at Any Time

Retaining Wall Planters



Retaining Wall Planters



Extra growing space - great for smaller plants



Awesome for planting pollinator attractants



Add many or few to your retaining wall



Made out of galvanized steel



Even use them by themselves as raised growing beds - inside or outside the greenhouse!



\$75.12/strip

Note: Does not include shipping.

*Prices Subject to Change at Any Time



Single Wall Planter



Single Wall Planter



Extra growing space - great for smaller plants



Awesome for planting pollinator attractants



Add anywhere to your retaining wall!



Made out of galvanized steel



Attach inside or even outside of your greenhouse!



\$26.99

Note: Does not include shipping.

*Prices Subject to Change at Any Time



Geothermal Exchange System

Liquid-to-Air

Liquid-to-Air Geothermal System - instead of Air-to-Air Tubes (Field Drainage Tiles)



Operate geothermally despite high water tables



Smaller trenches than the air-to-air tube system



Closed-loop, utilizing nontoxic antifreeze, circulating it through to a heat exchanger



\$5,065.78



For **36' - 48'** long greenhouses

\$5,680.29

For **54' - 84'** long greenhouses



\$6,566.66



For **90' - 126'** long greenhouses

\$7,372.22

For **132' - 150'** long greenhouses



Blower Box for Squirrel Cage Blowers

Blower Box



DIY assembly kit for a finished box to enclose your squirrel cage blowers



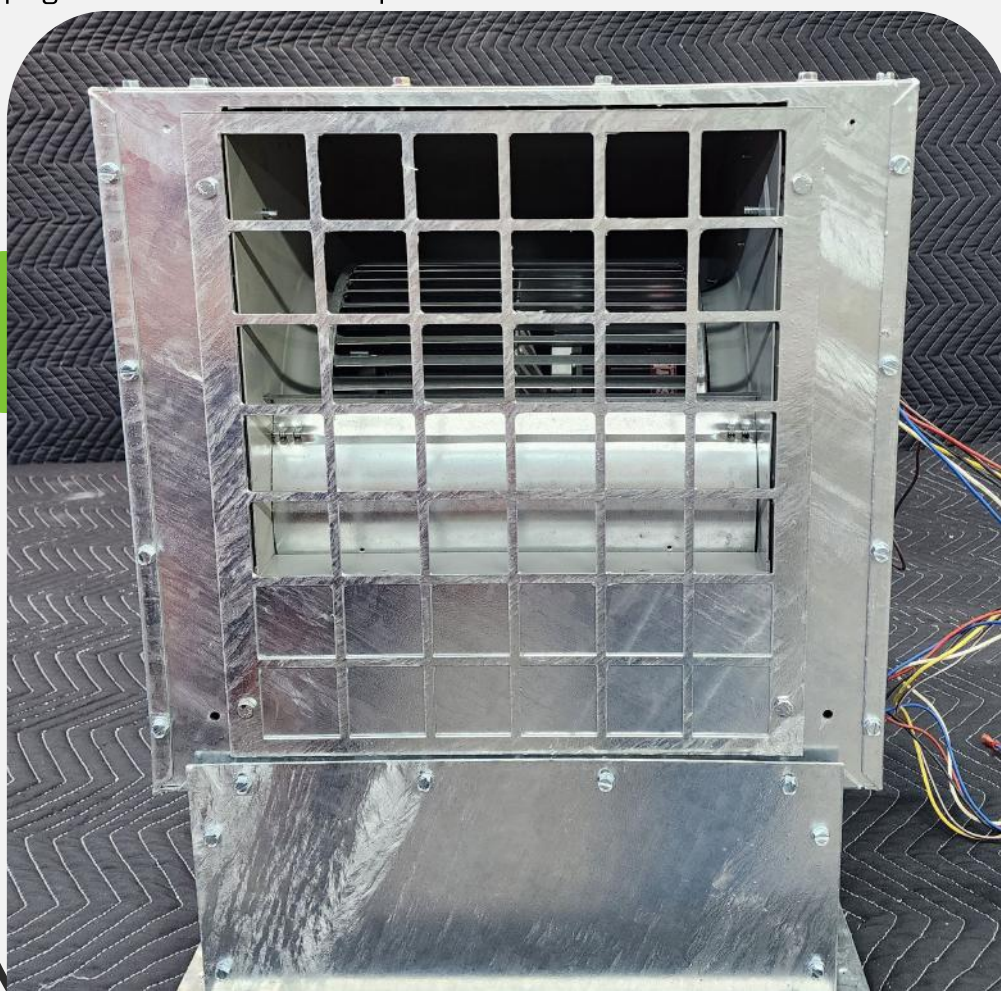
Galvanized finishing



Complete with screws & instructions

\$298/box*

*NOTE: Does not include shipping. Shipping is calculated at time of shipment.



*Prices
Subject to
Change
at Any
Time

Cross Members & Attachments for **Engineered Retaining Wall**

Engineered Retaining Wall Sets



Set includes cross member & two hangers to attach them to retaining wall posts



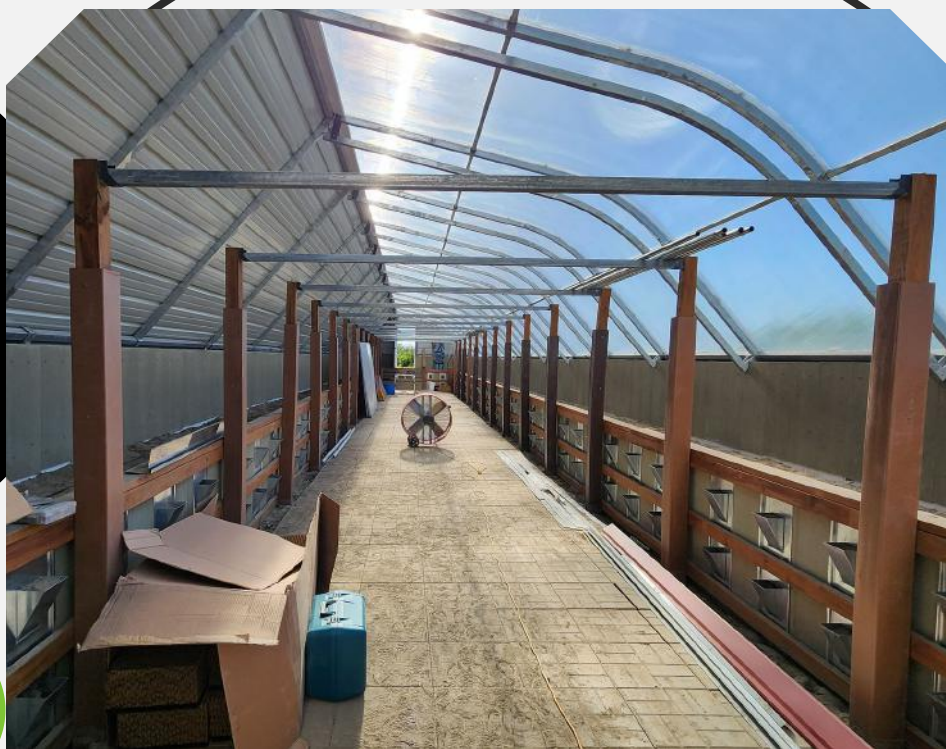
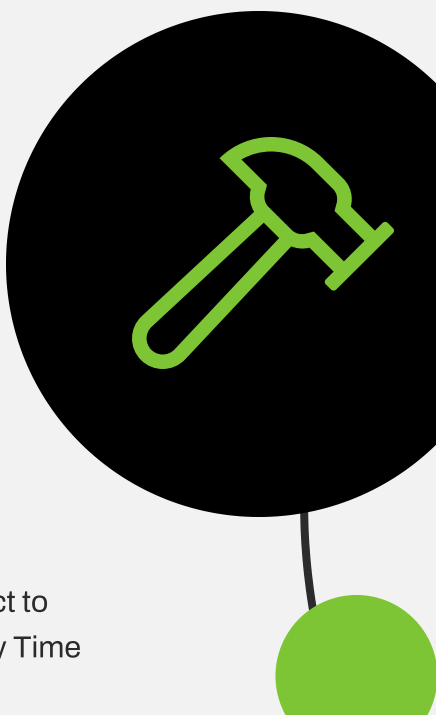
Cross members offered in bare steel or galvanized steel



Composite and wood posts (as pictured) are not included

\$132.25/set*

*NOTE: Does not include shipping. Shipping is calculated at time of shipment.



*Prices Subject to
Change at Any Time

Lexan Wind Kit

Lexan Wind Kit



Utilize for areas with extreme high wind



Extra stability for polycarbonate sheeting

\$11.13/plate*

Note: Does not include shipping

*Prices Subject to
Change at
Any Time



Winter/Summer Thermostat with Switch

Winter/Summer Thermostat with Switch



Thermostat for the heating/cooling tubes



Allows for the running of heating and cooling on **ONE** thermostat instead of **TWO**

\$110*

*NOTE: Does not include shipping.



*Prices Subject to Change
at Any Time



Horizontal **Air Flow Fans**

Horizontal Air Flow Fans



Ideal for pushing air through the greenhouse



Keeps air flowing through the greenhouse efficiently, especially longer greenhouses

\$153*

*NOTE: Does not include shipping.



*Prices Subject to Change
at Any Time



Hobby House Fans



Hobby House Fans



For greenhouses under 36' in length



18" fan to place in wall for proper air ventilation through greenhouse

\$690*

*NOTE: Does not include shipping.

*Prices Subject to Change
at Any Time

