



# Greenhouse in the Snow



# Table of Contents

**2**

Contact Information

**3**

Greenhouse in the Snow Kit

**6**

Automatic Vent System

**7**

Evaporative Cooling Wall

**8**

Retaining Wall Planters

**9**Liquid-to-Air Geothermal  
Exchange System**11**

Blower Box

**12**Engineered Retaining  
Wall

# Greenhouse in the Snow

## Contact Information



Greenhouse in the Snow  
1114 West 2nd St.  
Alliance, NE 69301



308-760-9718



[info@greenhouseinthesnow.com](mailto:info@greenhouseinthesnow.com)



[www.greenhouseinthesnow.com](http://www.greenhouseinthesnow.com)



Come see us in person!  
Book a tour of the  
greenhouse via our  
website or give us a call  
and schedule today! It is  
definitely worth the visit :)





# Greenhouse in the Snow

## Geothermal Greenhouse Kit

### Geothermal Greenhouse Kit



All kits are 17' wide



The smallest kit offered is 54' long & we increase in 6' increments in length



96' and 102' long are the most efficient sizes

## \$199/lineal foot





Cheaper than sourcing the same size of conventional greenhouse **PLUS** the added bonus of heating/cooling efficiency and **YEAR-ROUND** growing ability!

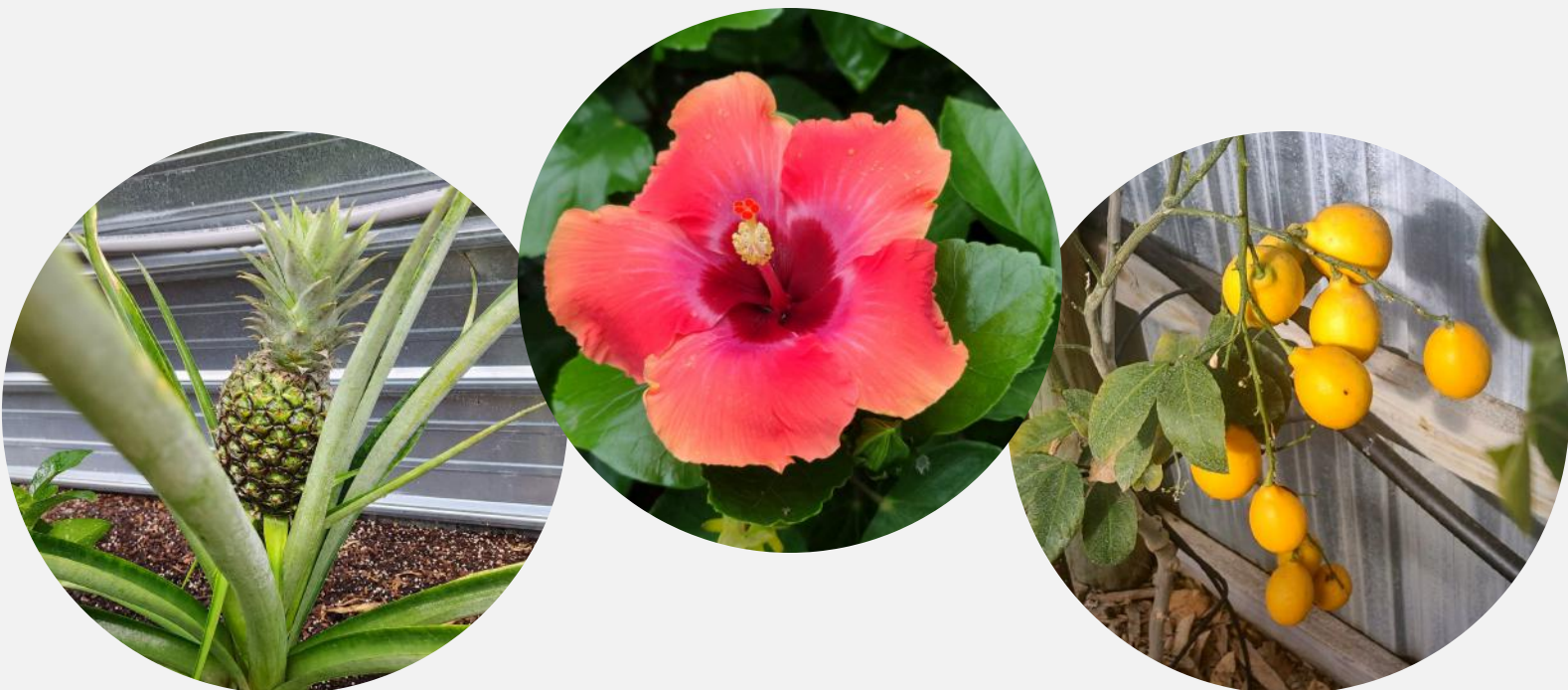


Kits contain the

- complete metal frame
- polycarbonate sheeting
- all screws/washers & joints/plates to put it together
- a complete step-by-step guide
- unlimited tech support via phone & email
- a materials list of the items you need to purchase locally to finish your greenhouse build



Kits are offered as bare steel or galvanized - galvanizing doubles or triples the lifetime of the greenhouse depending on your humidity levels





**Greenhouse in  
the Snow**

**Alliance, NE ~ 308-760-9718**  
**greenhouseinthesnow.com**  
**Sustainable food supply.**  
**Sustainable life.**

**Geo-  
Thermal**



The kit does not include the blowers with motors and thermostats for the air-to-air system tubes. We do keep them in stock, and they are available for purchase as an option on the greenhouse kit.



Blowers with motors & thermostats, galvanizing, freight and many other options are offered with the greenhouse kits for additional costs

Contact us today to request your quote!

You can request via email at:

[info@greenhouseinthesnow.com](mailto:info@greenhouseinthesnow.com)

Via phone at **308-760-9718**

Or on our website at:

[www.greenhouseinthesnow.com/request-a-quote](http://www.greenhouseinthesnow.com/request-a-quote)



# Automatic Vent System

View a DEMO at <https://photos.app.goo.gl/cu1y1n5GbscRzyZ36>

## Automatic Vent System (2 vents/system)



One vent on each end of greenhouse



Controlled by thermostat (wifi compatible) to automatically open and shut as needed & comes with all controls



Pan is not flat, so it sheds water

# \$5,371.12\*

\*NOTE: Does not include shipping. Shipping is calculated at time of shipment.



\*Prices Subject to Change at Any Time

# Evaporative Cooling Wall

## Evaporative Cooling Wall



Uses combination of air, water, and evaporation to add cool, humid air to the greenhouse environment



Ships straight from manufacturer



The heat of the greenhouse is used to evaporate water, turning it into vapor and assisting in cooling the greenhouse

**\$2,940.80**



\*Prices Subject to Change at Any Time



# Retaining Wall Planters

## Retaining Wall Planters



Extra growing space



Great for smaller plants



Awesome for planting  
pollinator attractants



Can add to as much or  
as little of retaining  
wall as you want



Made out of  
galvanized steel

**\$75.12/strip  
of three**

Note: Does not include shipping.

\*Prices Subject to Change at Any Time



# Geothermal Exchange System

## Liquid-to-Air

### **Liquid-to-Air Geothermal System - instead of Air-to-Air Tubes (Field Drainage Tiles)**



Operate geothermally despite high water tables



Smaller trenches than the air-to-air tube system



Closed-loop, utilizing nontoxic antifreeze, circulating it through to a heat exchanger



---

# \$5,547.62



For **54' - 84'** long greenhouses

---

# \$6,434.86



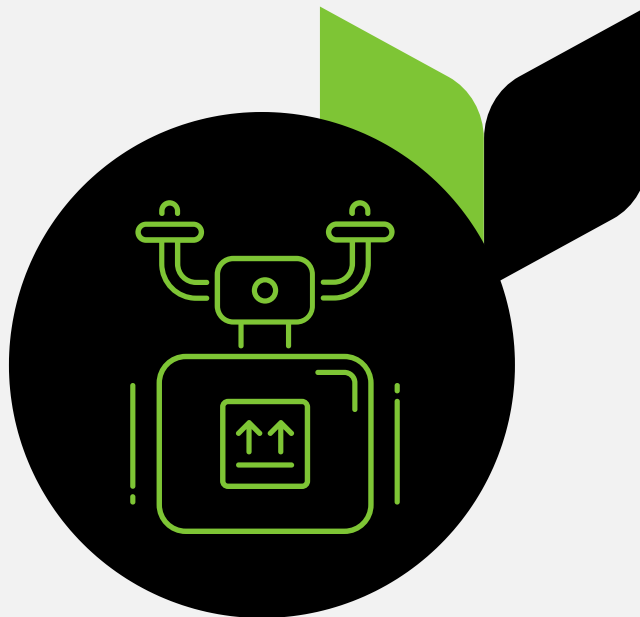
For **90' - 126'** long greenhouses

---

# Please contact us.



For **132' - 150'** long greenhouses





# Blower Box for Squirrel Cage Blowers

## Blower Box



DIY assembly kit for a finished box to enclose your squirrel cage blowers



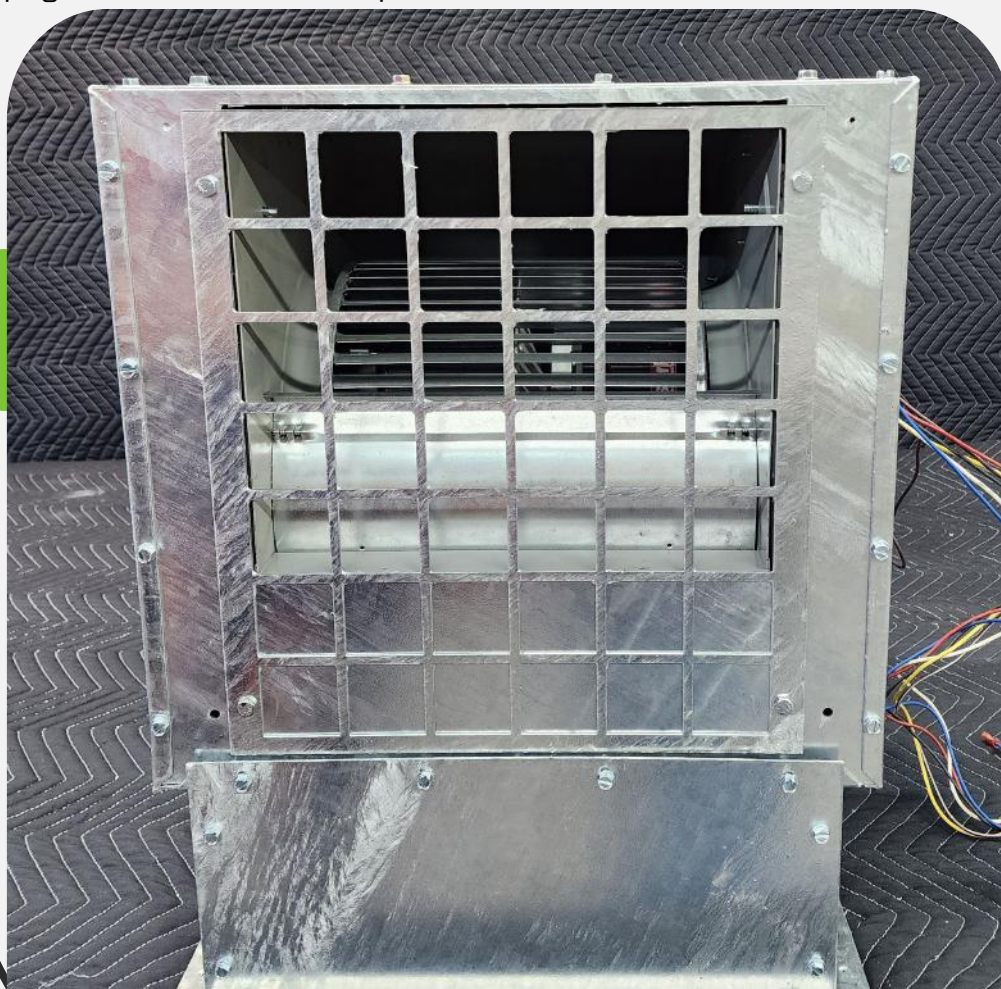
Galvanized finishing



Complete with screws & instructions

## \$298/box

\*NOTE: Does not include shipping. Shipping is calculated at time of shipment.



\*Prices  
Subject to  
Change  
at Any  
Time

# Cross Members & Attachments for **Engineered Retaining Wall**

## Engineered Retaining Wall Sets



Set includes cross member & two hangers to attach them to retaining wall posts



Cross members offered in bare steel or galvanized steel

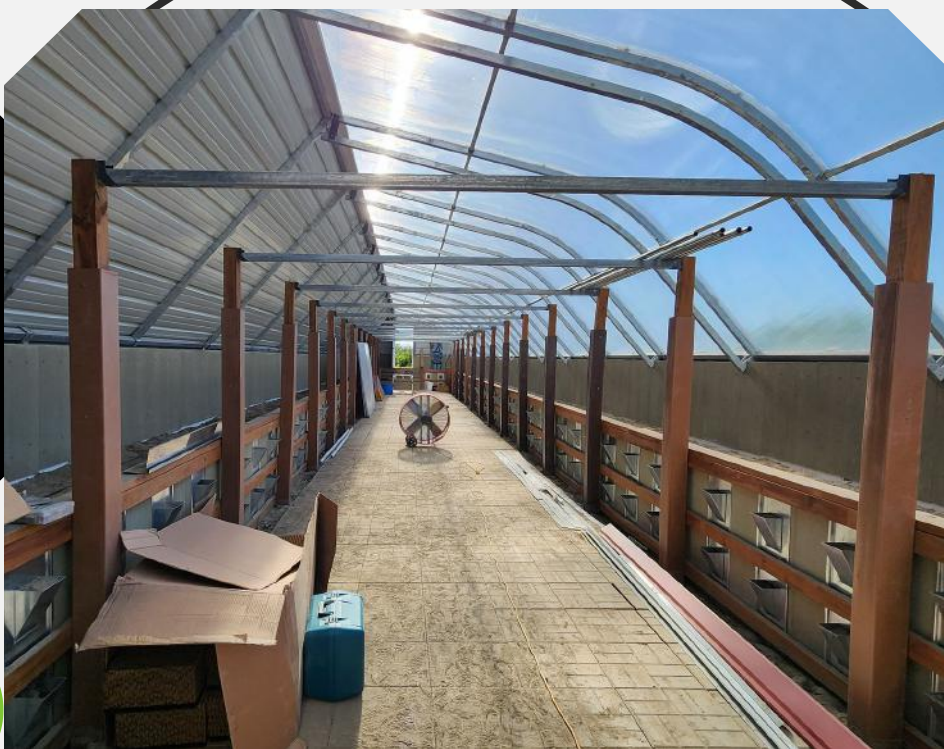
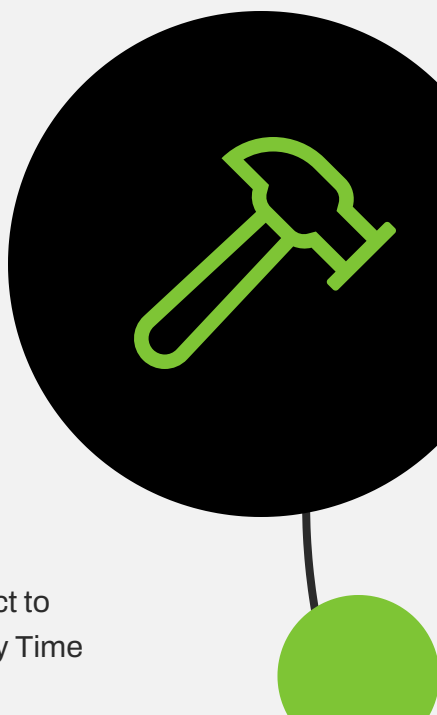


Composite and wood posts (as pictured) are not included

**\$119.58/set for Non-Galvanized**

**\$132.25/set for Galvanized**

\*NOTE: Does not include shipping. Shipping is calculated at time of shipment.



\*Prices Subject to  
Change at Any Time