



Greenhouse in the Snow



Table of Contents

1	Contact Information
2	Greenhouse in the Snow Kit
5	Backyard Free-Standing Greenhouse
6	Lean-to Greenhouse
7	Automatic Vent System
8	Evaporative Cooling Wall
9	Retaining Wall Planters
10	Liquid-to-Air Geothermal Exchange System
12	Blower Box
13	Engineered Retaining Wall Sets
14	Wind Kit
15	Winter/Summer Thermostat



Greenhouse in the Snow

Contact Information



Greenhouse in the Snow
1114 West 2nd St.
Alliance, NE 69301



308-760-9718



info@greenhouseinthesnow.com



www.greenhouseinthesnow.com



Come see us in person!
Book a tour of the
greenhouse via our
website or give us a call
and schedule today! It is
definitely worth the visit :)



Greenhouse in the Snow

Geothermal Greenhouse Kit

Geothermal Greenhouse Kit



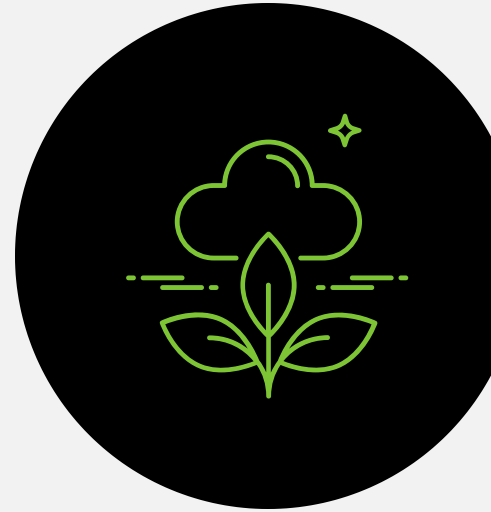
All kits are 17' wide



The smallest kit offered is 36' long & we increase in 6' increments in length



96' and 102' long are the most efficient sizes



36' - 48' @ \$249/lin. ft

54' - 150' @ \$199/lin. ft



**Note:
36' - 48'
will only
be sold
with
Liquid to
Air
Systems
ONLY!**



Cheaper than sourcing the same size of conventional greenhouse **PLUS** the added bonus of heating/cooling efficiency and **YEAR-ROUND** growing ability!



Kits contain:

- the complete metal frame
- polycarbonate sheeting
- all screws/washers & joints/plates to put it together
- a complete step-by-step guide
- unlimited tech support via phone & email
- a materials list of the items you need to purchase locally to finish your greenhouse build



Kits are offered as **bare steel** or **galvanized** - galvanizing doubles or triples the lifetime of the greenhouse depending on your humidity levels





The kit does not include the blowers with motors and thermostats for the air-to-air system tubes, **HOWEVER** we do keep them in stock, and they are available for purchase as an option on the greenhouse kit.



We also provide a materials list of items that you need to purchase locally like tubes, doors, etc. This list is available upon request before purchase and is also in the step-by-step guide.



Blowers with motors & thermostats, galvanizing, freight and many other options are offered with the greenhouse kits for additional costs.

Contact us today to request your quote!

You can request via email at:

info@greenhouseinthesnow.com

Via phone at **308-760-9718**

Or on our website at:

www.greenhouseinthesnow.com/request-a-quote

Backyard Free-Standing Greenhouse

Free-Standing Greenhouse



All kits are 17' wide

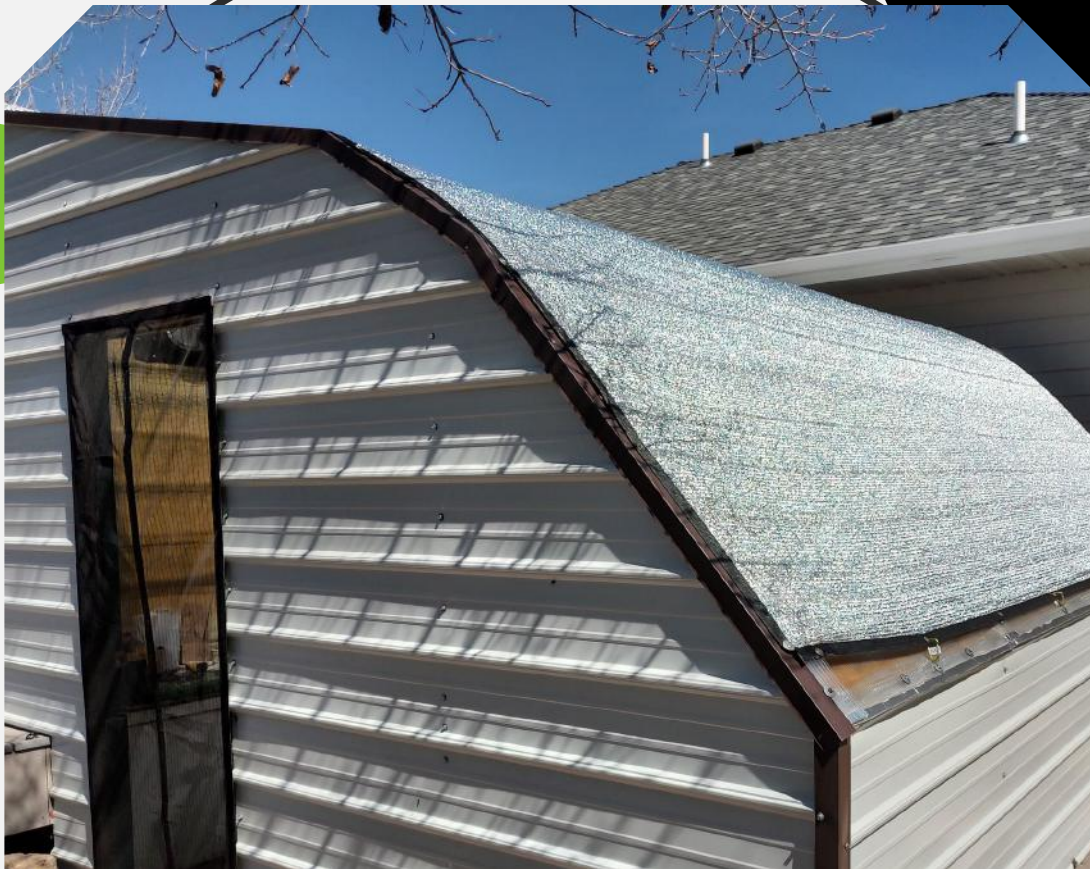
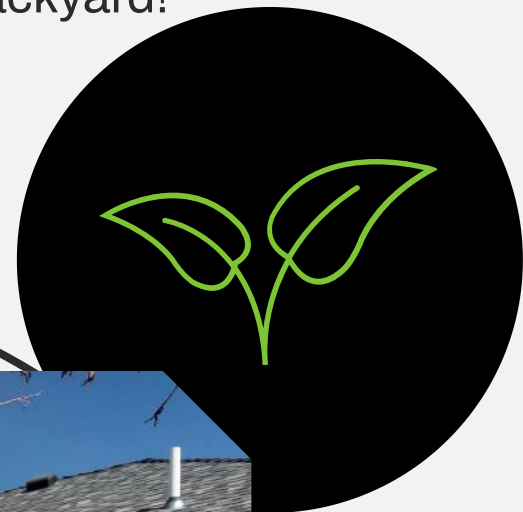


Kits are offered in 6' increments beginning at 12' long - so it can even be used in your backyard!



Stands alone & built at ground level - more of a traditional greenhouse

\$249/lineal foot



Lean-to Greenhouse



Lean-to Greenhouse



All kits are 17' wide



Kits are offered in 6' increments beginning at 12' long - so it can even be used in your backyard!



Made for "leaning" the greenhouse against side of a building

\$242/lineal foot



Automatic Vent System

View a DEMO at <https://photos.app.goo.gl/cu1y1n5GbscRzyZ36>

Automatic Vent System (2 vents/system)



One vent on each end of greenhouse



Controlled by thermostat (wifi compatible) to automatically open and shut as needed & comes with all controls



Pan is not flat, so it sheds water

\$5,371.12*

*NOTE: Does not include shipping. Shipping is calculated at time of shipment.



*Prices Subject to Change at Any Time

Evaporative Cooling Wall

Evaporative Cooling Wall



Uses combination of air, water, and evaporation to add cool, humid air to the greenhouse environment



Ships straight from manufacturer



The heat of the greenhouse is used to evaporate water, turning it into vapor and assisting in cooling the greenhouse

\$2,940.80



Retaining Wall Planters

Retaining Wall Planters



Extra growing space



Great for smaller plants



Awesome for planting
pollinator attractants



Can add to as much or
as little of retaining
wall as you want



Made out of
galvanized steel

**\$75.12/strip
of three**

Note: Does not include shipping.

*Prices Subject to Change at Any Time



Geothermal Exchange System

Liquid-to-Air

Liquid-to-Air Geothermal System - instead of Air-to-Air Tubes (Field Drainage Tiles)



Operate geothermally despite high water tables



Smaller trenches than the air-to-air tube system



Closed-loop, utilizing nontoxic antifreeze, circulating it through to a heat exchanger



\$5,547.62



For **54' - 84'** long greenhouses

\$6,434.86



For **90' - 126'** long greenhouses

Please contact us.



For **132' - 150'** long greenhouses



Blower Box for Squirrel Cage Blowers

Blower Box



DIY assembly kit for a finished box to enclose your squirrel cage blowers



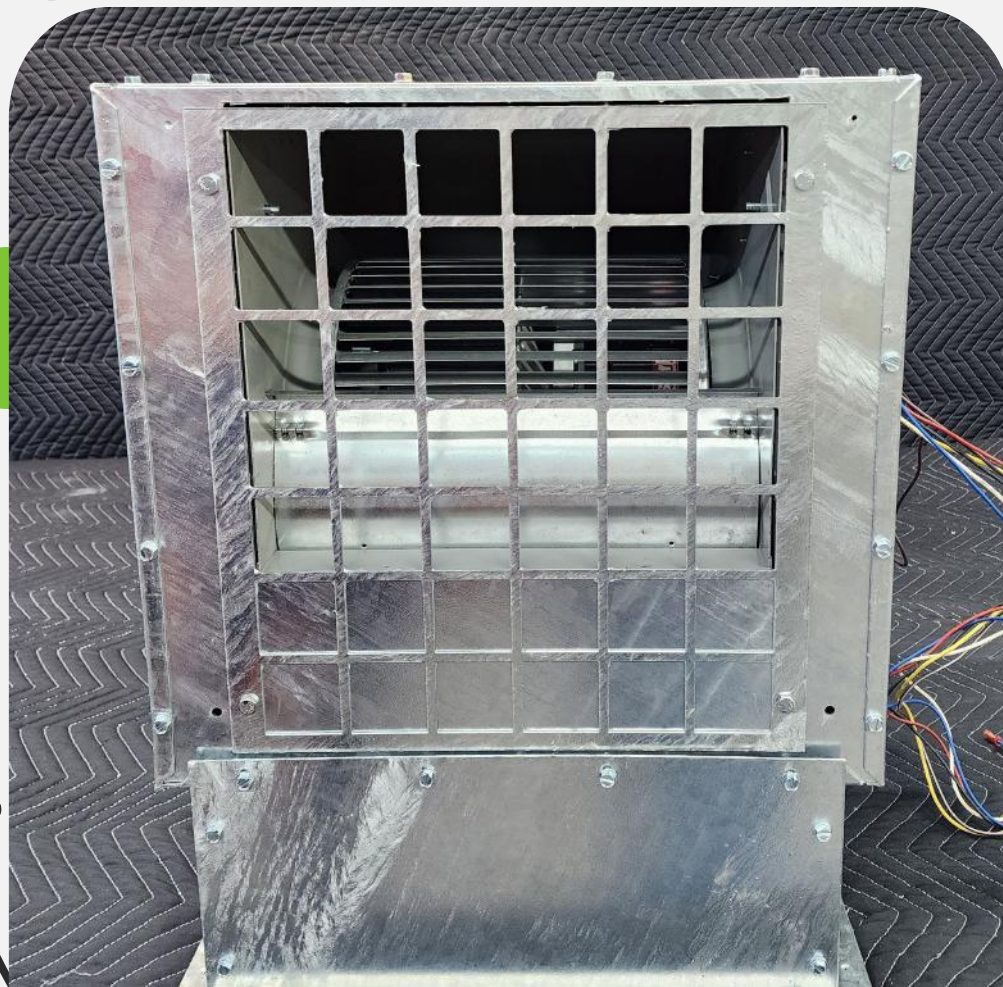
Galvanized finishing



Complete with screws & instructions

\$298/box

*NOTE: Does not include shipping. Shipping is calculated at time of shipment.



*Prices
Subject to
Change
at Any
Time

Cross Members & Attachments for **Engineered Retaining Wall**

Engineered Retaining Wall Sets



Set includes cross member & two hangers to attach them to retaining wall posts



Cross members offered in bare steel or galvanized steel

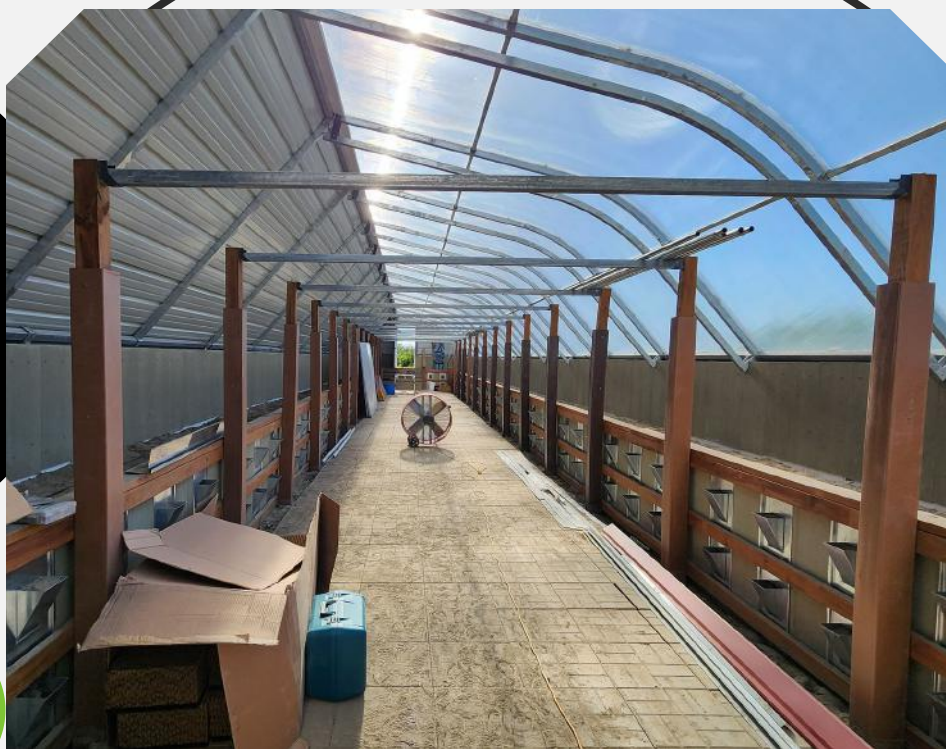
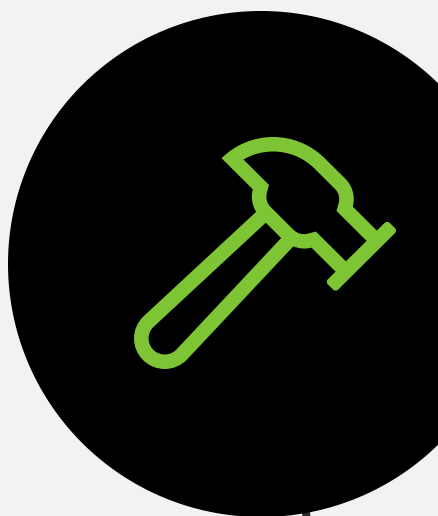


Composite and wood posts (as pictured) are not included

\$119.58/set for Non-Galvanized

\$132.25/set for Galvanized

*NOTE: Does not include shipping. Shipping is calculated at time of shipment.



*Prices Subject to
Change at Any Time

Lexan Wind Kit

Lexan Wind Kit



Utilize for areas with extreme high wind



Extra stability for polycarbonate sheeting

\$11.13/plate

Note: Does not include shipping

*Prices Subject to
Change at
Any Time



Winter/Summer Thermostat with Switch

Winter/Summer Thermostat with Switch



Thermostat for the heating/cooling tubes



Allows for the running of heating and cooling on **ONE** thermostat instead of **TWO**

\$110

*NOTE: Does not include shipping.



*Prices Subject to Change
at Any Time