

Endometriosis – effects on Bladder, Ureters and Kidney.

- Miss Sujata Gupta
- Consultant Gynecologist,
Accredited Endometriosis Specialist
- Secretary- British and Irish
society of Robotic Gynaecology
Surgeons
- Senior council member- BSGE
- Past Clinical head of Gynaecology at
Manchester Foundation Trust
- Associate director of medical
education- Robotic Surgery



www.eshre.eu/guidelines

Follow us!



Endometriosis

Guideline of European Society of Human
Reproduction and Embryology

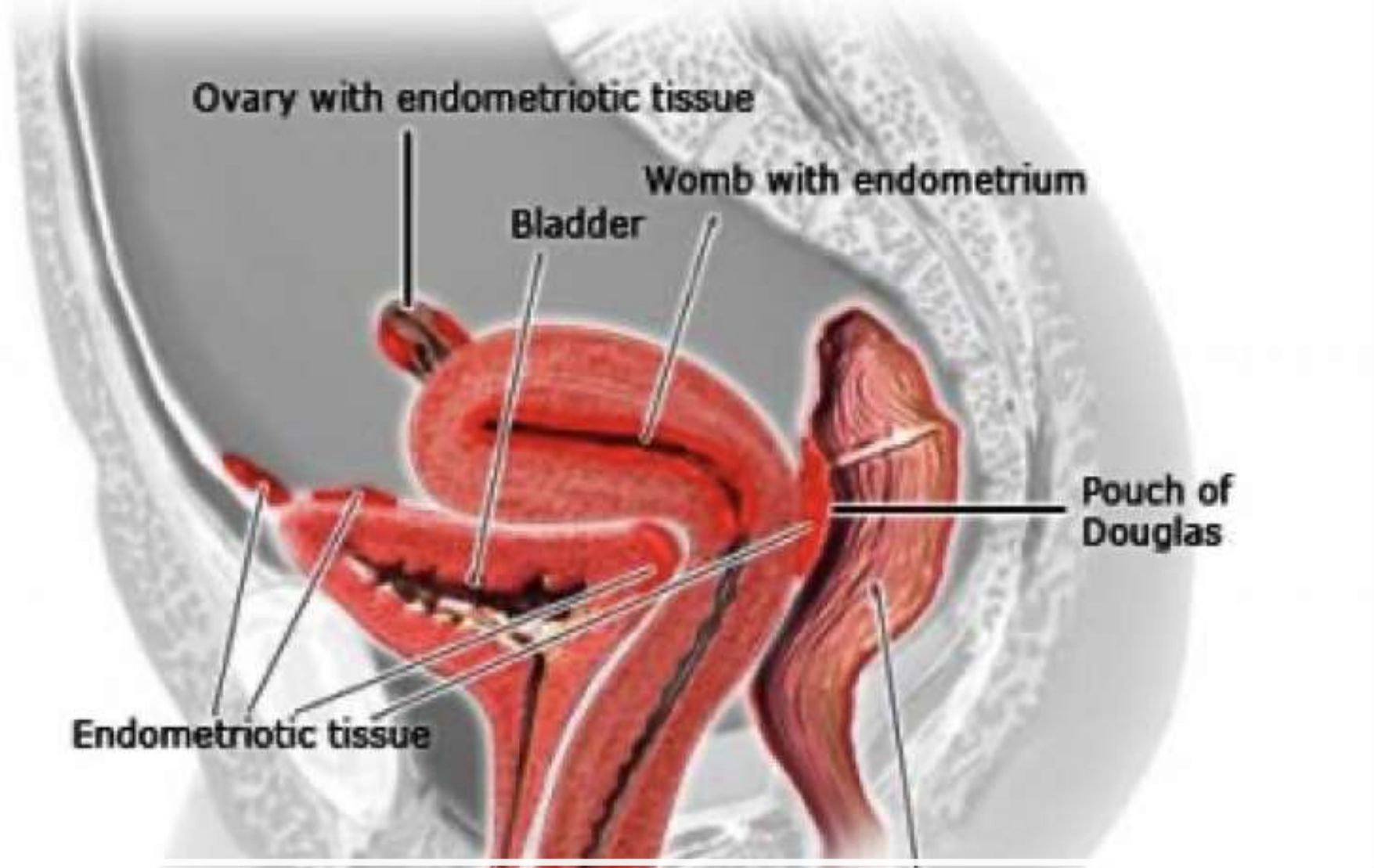
2022

ESHRE Endometriosis Guideline Development Group

Information for women with endometriosis

Version 2014

Patient version
of the ESHRE Guideline on
management of women
with endometriosis

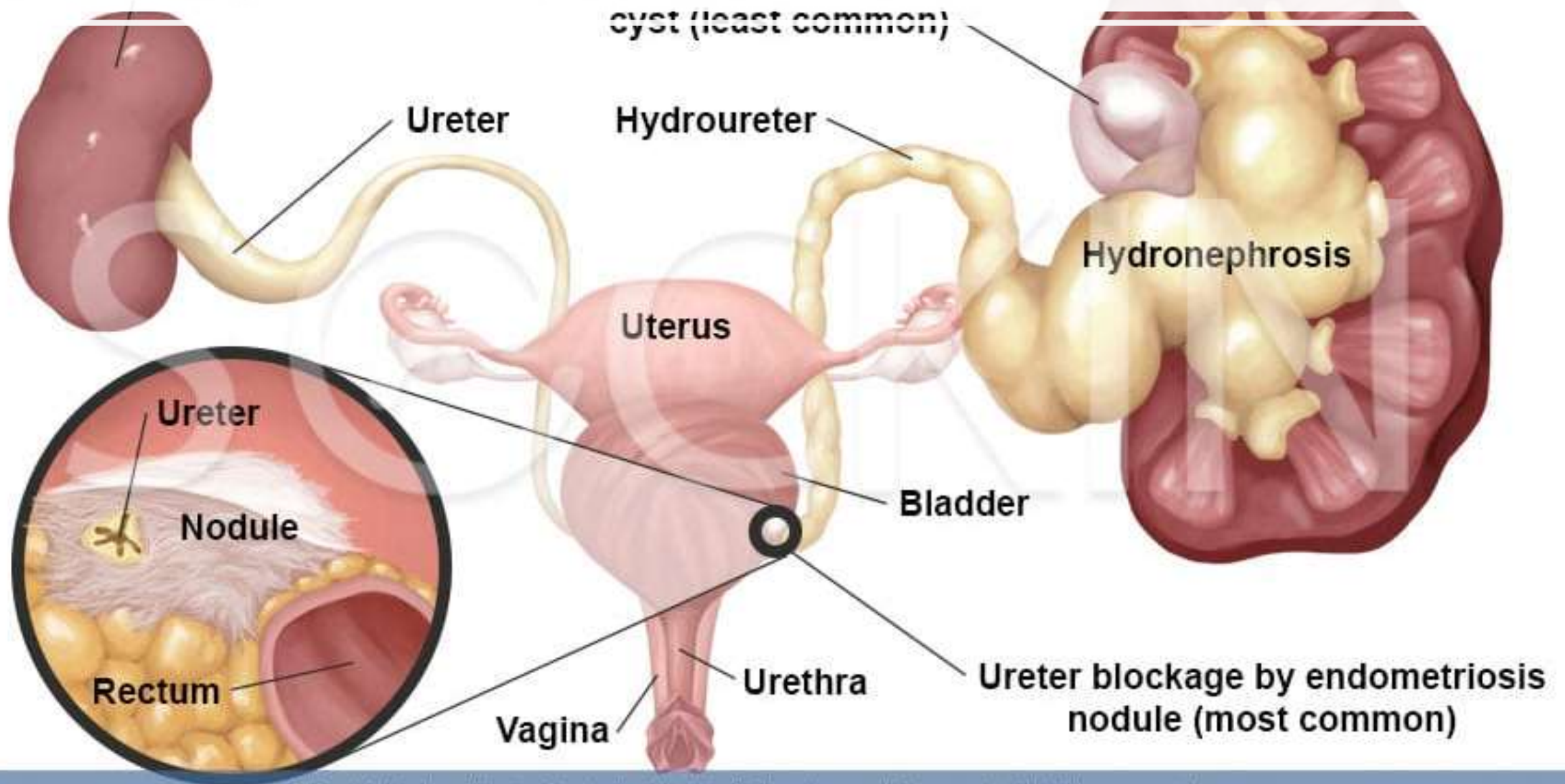


What is bladder endometriosis?

Cross-sectional view of abdomen from the side

Endometriosis Involvement of Urinary System

What is ureteric endometriosis?



What are
the
symptoms?

Cyclical pain on passing urine/
dysuria

Cyclical/ non cyclical bleeding
on passing urine

Pelvic pain/ pain around kidneys

Recurrent UTIs/ Cystitis

NONE (Silent Kidney death)

How
common is
it?

1-2%

True ureteric
endometriosis
is rarer (
less than 1 %)

Who should I see?

GP

Gynaecologist-
Endometriosis expert (
BSGE Center)

Urologist

Nurse
specialist

Fertility
specialist

Colo-rectal
surgeon

Pain
specialist

Psychosexual
counsellor

How is it treated?

- Investigations-

Urine- culture

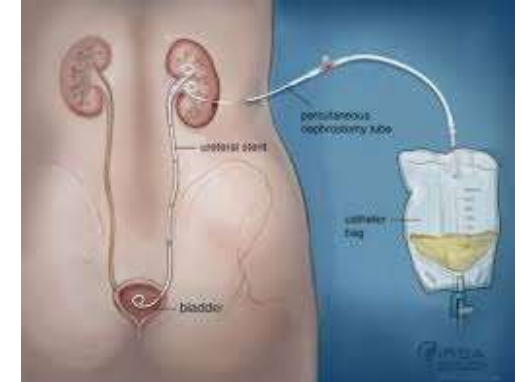
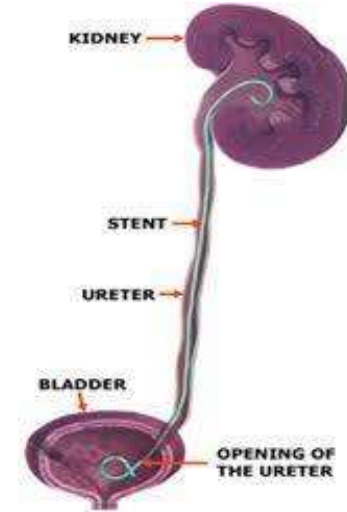
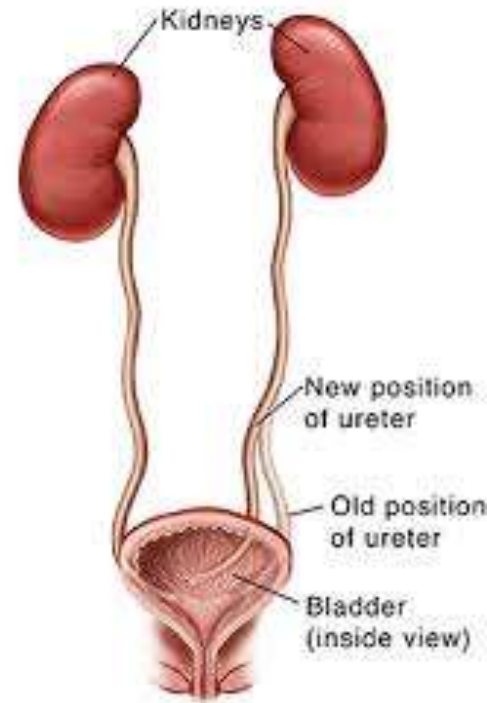
Blood- kidney function

MRI/ USS

Camera test - cystoscopy/ laparoscopy

How is it treated

- Surgery- Excision
- Bladder- may need bladder repair/ reconstruction
- Ureter- mobilization/ stenting/re-implantation/ re-anastomosis/ diversion
- Kidney- nephrostomy/ nephrectomy
- Medical- Limited and more useful as adjunct



Impact on life

Extremely debilitating

Affects sex

Socialising

Low mood

Health anxieties

Loss of life supporting
organ

Case studies

- 31 yr old- Previous normal laparoscopies, no MRI
MRI suggested a possible bladder nodule which was subsequently confirmed on cystoscopy and removed by further laparoscopy- Patient went home with 24 hrs with catheter. Catheter was removed after 10 days. Pain free for last 10 yrs.

28 yr old- long history of pelvic pain, on presentation to gynaecology- large ovarian cyst due to endometriosis putting pressure on ureter and kidney. Following surgery, pain and swelling on kidneys have improved.

33 yr - Long history of pelvic pain. Seen in endometriosis clinic and underwent MRI scan, small rt kidney with no residual function. Has had total hysterectomy since and rt kidney has been disconnected from the bladder. As a result pt has only one



Questions?