



AirTouch™ F20



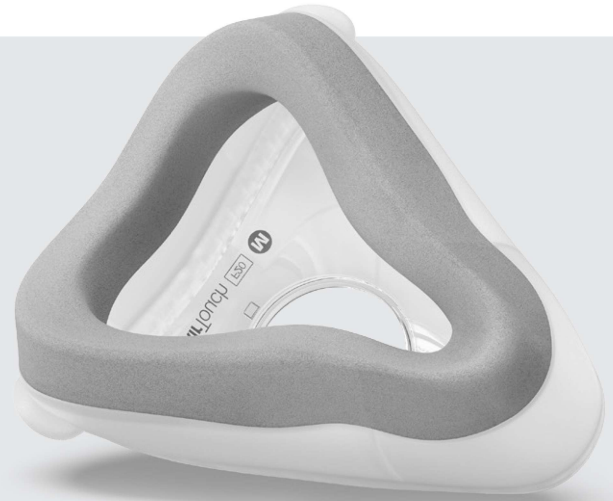
Our softest mask ever

When it comes to effective sleep therapy, comfort is key. That's why the AirTouch F20 features the ResMed UltraSoft™ memory foam cushion, a breakthrough in CPAP mask comfort technology. This innovative new cushion conforms to the unique contours of each face for a truly personalized fit. It is also designed to deliver a light, breathable seal across a wide range of therapy pressures, fitting 98% of patients.¹



[ResMed.com/AirTouch20](https://www.ResMed.com/AirTouch20)

Supple memory foam adapts to the curves and contours of each face, creating a soft, personalized fit designed to reduce facial markings and skin irritation.



AirTouch F20 highlights

Plush headgear specifically designed for extra softness and stability.

UltraSoft memory foam cushion is the softest cushion we've ever created, designed for exceptional comfort.

Magnetic clips quickly and easily guide the headgear to the frame.

Soft and flexible frame sits underneath the eyes and adapts to different facial types, while integrated padding adds softness. Compatible with InfinitySeal™ cushions.

Diffused venting evenly disperses air and dampens air flow.

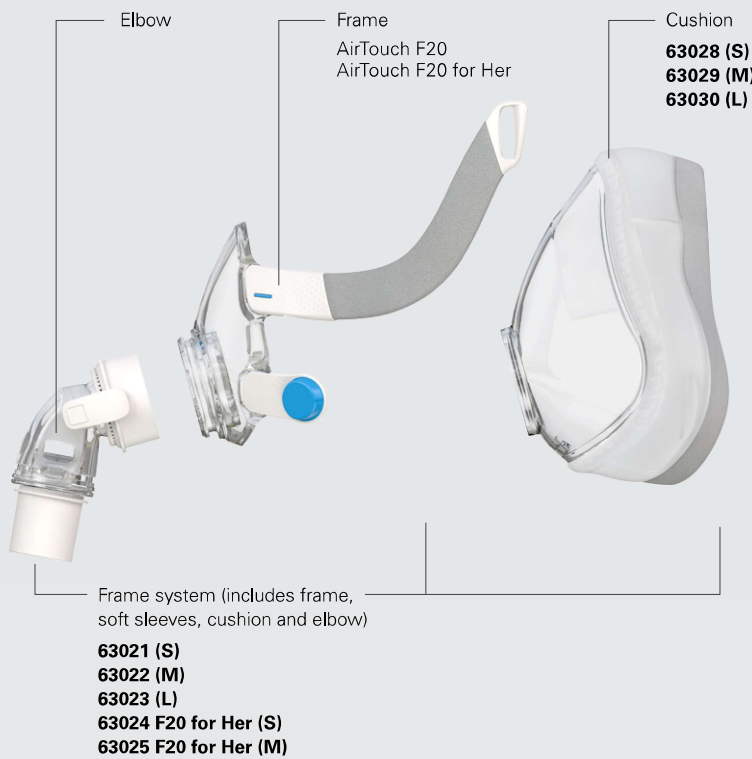
Quick-release elbow makes it simple to disconnect from tubing when getting up during the night.



AirTouch F20 for Her
Designed specifically for women.



AirTouch F20 components



AirTouch F20 headgear with headgear clips
63470 (S)
63471 (Std)
63472 (L)



AirTouch F20 for Her headgear with headgear clips
63473 (S)

Product codes

Complete mask systems (Includes frame system + headgear)

AirTouch F20: Small	63000
AirTouch F20: Medium	63001
AirTouch F20: Large	63002
AirTouch F20 for Her: Small	63003
AirTouch F20 for Her: Medium	63004



Fitting guide for AirTouch F20



- Start by ensuring the magnets on the lower straps are unclipped.
 - If they are clipped, detach them by twisting and pulling them away from the frame.



- Pull the headgear over the patient's head, making sure the logo is facing outwards.



- Position the lower straps so they both sit below the patient's ears.
 - Bring each of the magnets up to meet their corresponding clips on the frame.



- Adjust the fastening tabs on the upper straps until the mask feels even and stable.
 - Reattach the fastening tabs.



- Repeat step 4 with the lower straps.
 - Reattach the fastening tabs.



- Connect the device's air tube to the elbow, then click the elbow into the front of the mask.
 - Start the device.



Additional options

For patients with longer hair, we recommend feeding their hair through the back of the headgear. If tied in a pony tail, it should sit high enough to fit comfortably through the back of the headgear.

Refer to the user guide for further instructions and complete labeling information including indications, contraindications, warnings and precautions.