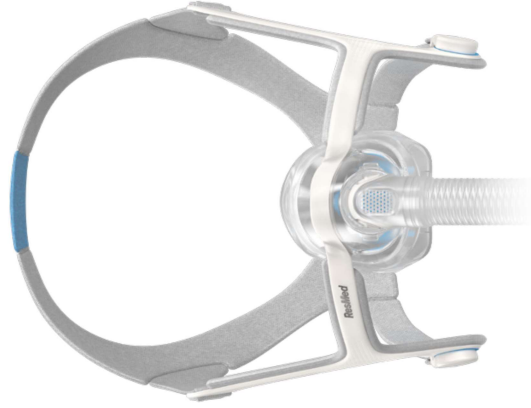


ResMed



AirTouch™ N20
Nasal mask

[ResMed.com](https://www.ResMed.com)

Start dreaming again

The benefits of sleep apnea treatment are truly remarkable. Getting a good night's sleep gives you the energy to get back to doing the things you love. But one of the most inspiring things people tell us about starting CPAP is that they're able to dream again.





Congratulations on taking an important step toward getting restful sleep.

ResMed is the #1 mask brand preferred by patients*, and we're excited to present our softest nasal mask ever.

Featuring a ResMed UltraSoft™ memory foam cushion that provides a uniquely comfortable and personalized fit, the ResMed AirTouch™ N20 is a mask we're confident will help you get the good night's sleep you deserve.

AirTouch™ N20
Nasal mask

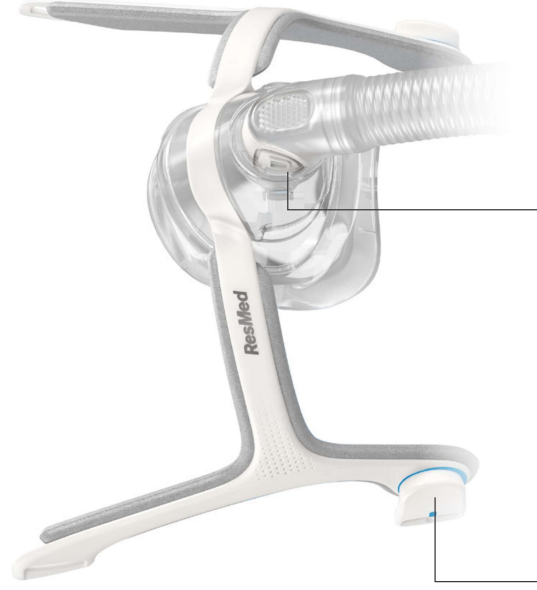
ResMed UltraSoft memory foam cushion technology



The patented UltraSoft memory foam cushion is designed to adapt to the contours of faces for an individualized fit that seals well. A majority of nasal mask users who tried AirTouch N20 in a recent study got an excellent seal and no mask leak while wearing it.^{1†}

Ready to get more comfortable?

The unique memory foam cushion of AirTouch N20 is designed to help prevent skin irritation, soreness and red marks around your nose area. In a recent study, a remarkable 9 out of 10 CPAP users who tried it found the UltraSoft memory foam cushion to be comfortable.^{1†}



Magnetic clips guide the headgear to the frame quickly and easily.

Quick-release elbow is simple to disconnect from the mask tubing without removing the mask.



Skip cushion cleaning and save time

Regularly replacing your CPAP supplies is recommended to ensure the best fit and most comfortable therapy experience. And with AirTouch N20, **regular replacement means no daily cleaning of your mask cushion.** Studies show that AirTouch mask cushions are hygienic to use for one month without cleaning.²⁻⁴

Register your AirTouch N20
today to receive mask part
replacement reminders.
Visit ResMed.com/Register.

AirTouch N20 uses the same UltraSoft memory foam cushion technology as AirTouch F20.

* Combined responses of those expressing a preference in an independent patient survey in the USA, UK, Germany, France and Australia, from March 2017. Visit ResMed.com/MaskBrand

† CPAP users rated mask criteria on a Likert Scale of 0-10. An 'excellent seal (no leak)' is equal to a score of 10. A comfortable mask is equal to a score of 8 or higher.

1 ResMed guided external clinical study of 25 evaluable, existing CPAP mask users from Mar. 15 to Apr. 5, 2018, in Bella Vista, AU who trialed ResMed AirTouch N20 and ResMed AirFit™ N20 at home for 7 nights each in place of their prescribed nasal mask.

2 ResMed AirTouch F20 bioburden safety analysis of foam cushion: 45-day assessment of 20 evaluable participants (in place of usual CPAP mask). July 9, 2009, to July 20, 2010, in Sydney, AU.

3 ResMed AirTouch F20 bioburden safety analysis of foam cushion: 60-day assessment of 14 evaluable participants. (in place of usual CPAP mask) July 9, 2009, to July 20, 2010, in Sydney, AU.

4 ResMed AirTouch F20 bioburden safety analysis of foam cushion summary: combined results from 45 and 60-day assessment of 34 evaluable participants. March 26, 2019, in Sydney, AU.

Distributed by ResMed Corp, 9001 Spectrum Center Boulevard, San Diego, CA 92123 USA

(858) 836-5000 or (800) 424-0737 (toll free). See ResMed.com for other ResMed locations

worldwide. AirFit, AirTouch and UltraSoft are trademarks and/or registered trademarks of the

ResMed family of companies. Specifications may change without notice. For patent and other

intellectual property information, see ResMed.com/ip. © 2020 ResMed. 10111290/1 2020-04

ResMed.com



Follow ResMed on:

