

**BOARD OF UNION COUNTY COMMISSIONERS
REGULAR MEETING
AGENDA
March 12, 2019**

UNION COUNTY, NM
DOCUMENT #201900170
03/8/19 04:16:37 PM
1 of 1
BY Brenda Green

9:00 a.m.

1. Call to order
2. Pledge of Allegiance
3. Approval of agenda and minutes
4. Hospital Report

9:30 a.m.

Joint Meeting with Town of Clayton and Clayton Schools

5. Discussion/Possible Action Items
 - i. Communications Tower Lease with Durrett Cattle
 - ii. Law Enforcement Protection Fund JPA's Village of Grenville & Folsom
 - iii. Law Enforcement Protection Fund
 - iv. McAdams Subdivision Exemption request
 - v. Resolution #107-20 Appoint Manager to sign closing documents for Kiser Property
 - vi. Resolution #107-21 2019 Road Audit
 - vii. Resolution #107-22 Supporting I-27 extension
 - viii. Resolution #107-23 Fire Department budget increase
 - ix. Resolution #107-24 Acceptance of FY18 Audit
 - x. Comprehensive Plan Contractor discussion
 - xi. Approval of Bills
 - xii. Road Crossing Permits
 - xiii. Inventory Items Disposition - Road Department International Water Truck
 - xiv. Healthcare Assistance - Approval of Claims
 - xv. County Travel Requests
 - xvi. FY 2020 Budget Workshop

11:00 a.m. Citizen's Forum

1. Road Superintendents Report
2. Fire Coordinator/Emergency Manager Report
3. Elected Officials Reports

Executive Session-Pursuant to NMSA 1978, Section 10-15-1(H)
7- Pertaining threatened litigation in which the County is or may become a participant;

Executive Session-Pursuant to NMSA 1978, Section 10-5-1(H)2-Pertaining to Limited
Personnel Matters

Adjourn

As of 3/8/2019

Next Meeting April 9, 2019 @ 9:00
Joint Meeting with Town of Clayton June 11, 2019 @9:30

BOARD OF UNION COUNTY COMMISSION
REGULAR MEETING
February 12, 2019

BOARD MEMBERS PRESENT:

Chairman Justin K. Bennett Commissioner W. Carr Vincent Clayton F. Kiesling

OTHERS PRESENT:

Clerk Mary Lou Harkins Treasurer Brandy Thompson Sheriff James Lobb
Mgr. Angie Gonzales Admin. Assistant Cheryl Garcia Fire Coordinator Jim O'Bryant
Emergency Mgr. Dusty Russell Road Superintendent Russell Kear

GUESTS:

Mike Newman, Managing Director - Hilltop Securities
Sue Richardson, Reporter - Union County Leader
Tammi Stump, CEO - Union County General Hospital
Melissa Prante, CFO - Union County General Hospital
Robert Simms, Anesthesiologist - Union County General Hospital
Judy Steen, Board Member/Town of Clayton Trustee - Clayton Health System (CHS)
Duane Enger, Director, Project Development & Project Manager - PNE (Pure New Energy) - Gladstone New Energy Wind Farm Project
Garth Boyce Jim Mayfield - C&C Communications Kenneth Taylor

At 9:01 a.m., Chairman Bennett called the meeting to order in the Union County Commissioner's Office, located in the Union County Courthouse. The Pledge of Allegiance was recited.

Commissioner Vincent moved to approve the agenda and the regular meeting minutes of January 8, 2019. Commissioner Kiesling seconded. There was no further discussion. Vote: All YES. Motion carried. The minutes were signed.

HOSPITAL REPORT

Tammie Stump, CEO, distributed copies of the "County Commissioner Monthly Hospital Report, Union County General Hospital, Tammie Stump, CEO, dated February 12, 2019 (4 pgs.), attached as an exhibit.

Stump gave a lengthy report on the following (but not limited to the following): **Rural Health Clinic Update; Des Moines Clinic Update; Business Office/Revenue Cycle Update; Construction Updates; Financial Assistance Update; Rehabilitation Report - new rehab director hired (Russell Lees); Radiology Report; IT Report; Evident Clinic Module; S-10 Charity Care (Cost Report)/Financial Assistance; and Medical Staff Changes.** Stump also reported that there will be mandatory customer service training for all staff next week.

In anticipation of the legalization of Marijuana, Commissioner Vincent suggested to Stump that she speaks with medical providers in neighboring Trinidad, Colorado about the influx of medical care for transients and how to prepare UCGH. Judy Steen, CHS Board Member, reported that a recent trip was made to Trinidad by herself, Town of Clayton Manager Ferron Lucero, Mayor Ernest Sanchez, and Chamber of Commerce Executive Director April Gallegos. They met with Trinidad city officials about the pros and cons of legalization for their community.

Melissa Prante, CFO, gave a lengthy report on the following (but not limited to the following): key statistics, statement of revenue and expenses YTD, and balances. A copy of the Monthly Operating Report dated January 23, 2018 (1 pg), Executive Financial Summary for Union County General Consolidated - 6th Month FY 2018 (1 pg.) and Clayton Family Practice (1 pg.) - 5th Month FY 2018 are attached as exhibits.

DISCUSSION/POSSIBLE ACTION ITEMS

DONATION OF CLAYTON MEDICAL OFFICE (DR. JENKINS OLD OFFICE)

Mgr. Gonzales reported that the hospital board and the Clayton Medical Office stockholders are still interested in the donation of their building to the County as an addition to the hospital campus. Discussion followed.

Commissioner Vincent moved to accept the possible donation of the Clayton Medical Office building. Commissioner Kiesling seconded. There was no further discussion. Vote: All YES. Motion carried.

COMMUNICATIONS TOWER LEASE WITH DURRETT CATTLE

Fire Coordinator Jim O'Bryant reported that a signature has been obtained on the draft lease agreement with Mr, Durrett. This signature simply shows Durrett's commitment to the agreement. A few obstacles remain. Discussion followed.

Mgr. Gonzales reported that a letter has gone out to the State Fire Marshall seeking permission to spend monies (\$16 - \$18 K) for the tower project. Gonzales reported that the Fire Marshall wants Durrett to deed the property to the County for the tower. Discussion followed. O'Bryant explained that pursuant to discussion with legal counsel, the donation will be a 10-year agreement and the language will be changed to reflect "Donor and Donee" instead of "Lessor and Lessee". O'Bryant said that everything else should be ready to go except for the Fire Protection Fund expenditure approval.

Commissioner Kiesling prompted a discussion with O'Bryant about the 2019 red book and seats on the back of the truck. Discussion followed. No action was taken.

RFP #18/19-04 ENGINEERING SERVICES FOR COUNTY AND COMPONENT UNIT

Mgr. Gonzales reported that one (1) bid was received from EMC Engineers. The "Scope Control and Cost" was discussed. A living document will be submitted to Union County or Union County General Hospital with every step in each project to ensure all parties involved are knowledgeable. This will be reviewed and approved by Union County or Union County General Hospital. Engineering services will be provided as needed. Discussion followed.

Commissioner Vincent moved to approve the awarding of RFP #18/19-04 Engineering Services for County and Component Unit. Commissioner Kiesling seconded. There was no further discussion. Vote: All YES. Motion carried.

At 10:00 a.m., meeting recessed for a short break. At 10:09 a.m., the meeting resumed.

CITIZEN'S FORUM

Kenneth Taylor - Pinabetes Road. Taylor thanked the Board and the Road Department for the work done on Pinabetes Road. Taylor asked that blade maintenance be done and asked that the County consider putting a little Caliche down on the road when in the area.

LAW ENFORCEMENT PROTECTION FUND JPA'S VILLAGE OF GRENVILLE, FOLSOM, & DES MOINES

Proposed agreement(s) were reviewed and discussed whereby limited law enforcement services will be provided to the County's villages (Des Moines, Folsom, and Grenville,) by the Sheriff, in exchange for apparatuses and equipment. Each village seeks the sum of \$20,000 through the fund. Mgr. Gonzales reported that Des Moines is ready for Board approval and that the Folsom and Grenville Village Councils will be meeting soon for discussion and approval. JPA's for the Villages of Grenville and Folsom tabled until next month's regular meeting agenda.

Commissioner Vincent moved to approve the Law Enforcement Protection Fund JPA for the Village of Des Moines. Commissioner Kiesling seconded. There was no further discussion. Vote: All YES. Motion carried. Agreement signed.

LAW ENFORCEMENT PROTECTION FUND

No action was taken. Item tabled.

BOARD OF REGISTRATION APPOINTMENTS

"Pursuant to Section 1-4-28 NMSA 1978 of the New Mexico Election Code, the Secretary of State, County Clerks, and Boards of Registration, in compliance with the National Voter Registration Act of 1993 (NVRA) shall remove from the official list of eligible voters the names of voters who are ineligible to vote due to a change of residence. This process occurs each odd-numbered year and is based upon the results of the confirmation mailing sent by the Secretary of State two years prior. In preparation for the 2019 voter registration file maintenance, the Secretary of State conducted a uniform and non-discriminatory confirmation mailing in August 2016."

As contained in the meeting packet, a letter from Mandy Vigil, Election Director, of the Secretary of State's Office, dated January 30, 2019, contained directive for the County Commissioners.

Clerk Harkins presented a memo to the commissioners dated February 12, 2019, as well as the list of "2019 Purge - Inactive Voters" list. The list contained the names of sixty-two (62) voters. Harkins explained that the maintenance process had been initiated with local party chairs and recommendations were made as noted in the memo. Documents were reviewed. Discussion followed. Recommendations were considered. The following voters were given consideration as members and alternates to the Board of Registration: Lindsey Fluhman (D), Katherine Barnes (R), Adam S. Cormier (R), Lewie Baker (D) and Christy Baird (R). Clerk Harkins will publish notice for the Board of Registration meeting which is required no later than March 15th, 2019.

Commissioner Vincent moved to approve the appointments of Lindsey Fluhman (D), Katherine Barnes (R), Adam S. Cormier (R), Lewie Baker (D) and Christy Baird (R) as members/alternates for the Board of Registration. Commissioner Kiesling seconded. There was no further discussion. Vote: All YES. Motion carried. Memo signed.

RESOLUTION #107-17 NMFA APPLICATION FOR REFINANCE OF 4TH UCGH LOAN

Mgr. Gonzales shared copies of the New Mexico Finance Authority Public Project Revolving Fund Building Application for review. Mike Newman, Managing Director of Hilltop Securities Inc., reported that the 4th hospital loan is now eligible for refinancing. Newman supplied copies of the loan refunding analysis for Board review. A proposed resolution authorizing and approving the submission of a completed application for financial assistance and project approval to the New Mexico Finance Authority was reviewed and discussed. Newman proceeded to share his recommendation to the Board.

Commissioner Kiesling moved to approve Resolution #107-17 authorizing and approving the submission of the completed application for financial assistance and project approval to the New Mexico Finance Authority pertaining to the 4th hospital loan. Commissioner Vincent seconded. There was no further discussion. Vote: All YES. Motion carried. Application signed.

RESOLUTION #107-18 OPPOSITION OF GUN CONTROL LEGISLATION

The "Preamble" to proposed Resolution 107-18 states as follows "Recognizing that the primary reason for citizens having the right to keep and bear arms, as guaranteed by the Second Amendment to the United States Constitution, is to provide for the promise of freedom and the means to prevent its loss and to protect oneself, loved ones and property from lawlessness". The proposed resolution opposes legislation that would impose rules, regulations, and restrictions exceeding federal law on all private firearm transfers between individuals and on all firearms sales at gun shows was reviewed and discussed. The Board directed Mgr. Gonzales to deliver the resolution to the county's lobbyist, Clint Harden, upon approval.

Commissioner Vincent moved to approve Resolution #107-18 opposing legislation that would impose rules, regulations, and restrictions exceeding federal law on all private firearm transfers. Commissioner Kiesling seconded. There was no further discussion. Vote: All YES. Motion carried. Resolution signed.

RESOLUTION #107-19 SECOND AMENDMENT SANCTUARY COUNTY

A proposed resolution declaring Union County to be a second amendment sanctuary county was reviewed and discussed. The Board desires to declare its support of the Second Amendment to the United States Constitution and the New Mexico Constitution protecting citizens' rights to keep and bear arms. The Board supports the elected Sheriff of Union County in the exercise of his/her sound discretion and affirms its resolve to support decisions by the Sheriff to not enforce any unconstitutional firearms law against any citizen nor will they not authorize or appropriate government funds, resources, employees, agencies, contractors, buildings, detention centers or offices for the purpose of enforcing law that unconstitutionally infringes on the right of the people to keep and bear arms.

Commissioner Vincent moved to approve Resolution #107-19 declaring Union County to be a Second Amendment Sanctuary County. Commissioner Kiesling seconded. There was no further discussion. Vote: All YES. Motion carried. Resolution signed.

COMPREHENSIVE PLAN CONTRACTOR DISCUSSION

Mgr. Gonzales reported on recent communications with the Town of Clayton Clerk, Renee Valdez. The Town has received three (3) proposals for comprehensive plan contractor services. Commissioner Kiesling attended a presentation for contractor services hosted by the Town. Chairman Bennett asked that Comprehensive Plan discussion be on next month's Joint Communications agenda.

APPROVAL OF BILLS

The Board reviewed and discussed bills in the amount of \$198,226.96, plus travel reimbursement for Commissioner Vincent's travel to Santa Fe for the mid-winter conference.

Commissioner Kiesling moved to approve the payment of bills in the amount of \$198,226.96 plus travel reimbursement for Commissioner Vincent's trip to Santa Fe for the mid-winter conference. Commissioner Vincent seconded. There was no further discussion. Vote: All YES. Motion carried.

Mgr. Gonzales and Treasurer Thompson discussed the hospital's request for Mill Levy/GRT monies in the amount of \$526,466.77 and broken down as follows: Novitas Solutions Part A \$309,907.00, New Mexico Human Services Dept \$162,077.50 and GSD-Admin Services Division \$54,482.27.

ROAD CROSSING PERMITS

Permit No. 333, submitted by Permittee, ENMR Telephone Cooperative, for the purpose of laying fiber optic telecommunication lines across and along Cerrito Blanco Road and Permit No. 334, submitted by Permittee Friendly Farms, for the purpose of laying underground irrigation line across the south end of Pipas Road were reviewed and discussed.

Commissioner Vincent moved to approve Road Crossing Permits 333 and 334. Commissioner Kiesling seconded. There was no further discussion. Vote: All YES. Motion carried. Permits signed.

INVENTORY ITEMS DISPOSITION - ROAD DEPARTMENT INTERNATIONAL WATER TRUCK

No items were presented for disposition. No action was taken. Mgr. Gonzales reported that next month she'll ask that the Board consider the disposition of the black ford car through govdeals.com.

On another note, Road Superintendent Kear reported that Garth Boyce was interested in retrieving two (2) old lite poles that were thrown away approximately ten (10) years ago and are located in a junk pile within the road department yard. Years ago, Boyce had donated the lite poles to Dr. Anne Kegley who previously established a visitor's park/playground which was located directly behind the hospital. The park has since been vacated and the remnants were hauled off by the County and disposed of. The lite poles remain in the county's junk pile. Discussion followed. The items had been disposed of years ago at least ten (10) years ago. Boyce was told he may retrieve the lite poles.

HEALTH CARE ASSISTANCE PROGRAM - Approval of Claims

There were five (5) claims presented for consideration, Claims were reviewed and discussed in the amount of \$792.48.

Commissioner Vincent moved to approve the payment of five (5) health care assistance claims totaling \$792.48. Commissioner Kiesling seconded. There was no further discussion. Vote: All YES. Motion carried.

COUNTY TRAVEL REQUESTS

The following employees reported/requested travel approval: **Mgr. Gonzales** will be attending a **leadership training** in Santa Fe February 21-23; **Commissioner Kiesling** will attend the **NERTPO meeting** in Mora on

February 27th; Administrative Assistant Garcia, Treasurer Thompson, Commissioners Vincent, and Kiesling will/may be attending County Day at the Roundhouse on February 15th; Sheriff Lobb may be attending a Sheriff's border meeting on February 22nd; Assessor Trujillo and Deputy Assessor Cruz attended a training in Santa Fe February 11-12th. All travel approved.

ROAD SUPERINTENDANT'S REPORT

Superintendent Kear reported on the following but not limited to the following: Both Mack trucks are being serviced at Bruckner's in Amarillo; Holland and Pinabetes Road projects are complete; Harris Road repair project has begun; culvert replacements on Weese and Pacheco Roads; Sand Mesa Road repair; ongoing countywide road blading and shaping; widening the first part of Sophia Road coming out of Mt. Dora; and, routine equipment maintenance. Chairman Bennett asked Superintendent Kear that Perkins Road be repaired; Commissioner Vincent and Kiesling addressed a 3-4 mile section on Pasmonte Road's south end. Kear reported that this will be worked into one of the 2019 projects; Commissioner Kiesling addressed the County Road Department's need for a roller. Discussion followed.

FIRE COORDINATOR REPORT

Coordinator O'Bryant thanked the Board and administration for supporting the local fire departments. O'Bryant reported on the following (but not limited to the following): training and fire season preparation is being focused on; will be hosting a Firewise class on February 16th; tower placement is being considered in Oklahoma and along the Stateline in an attempt to address the complaints had during the Stateline Fire; and, there will be several training exercises with prescribed fires, weather permitting.

EMERGENCY MANAGER REPORT

Mgr. Russell handed out copies of his report dated February 4, 2019, (2 pgs. attached as an exhibit). Russell reported on the following but not limited to the following: **LEPC (Local Emergency Planning Committee)** next meeting is on April 16th; **EMPG (Emergency Management Performance Grant)** getting quotes for radios - Baca Valley is not a state vendor; **Hazard Mitigation Grant** - need a contractor for this grant; **Communications (Dispatch & Fire Departments)** Baca Valley will finish up on radio and console programming. Still having some issues with Sedan's radio programming; **Homeland Security Site Visit** - a site visit was made on January 14th; **Snow Storms; Legislative Luncheon** - visited with Cabinet Secretary White about winter weather road closures and use of road closure barriers. White has been invited to Union County for a tour, possibly after the legislative session; **Partners in Preparedness Conference** - will speak during the conference on March 4-7th to discuss the EOC (Emergency Operations Center) during the Ute Park Fire; **EMS Courses** - class postponed, need a minimum of six (6); and **upcoming meeting dates**. Chairman Bennett addressed the application of (EMPG) grants. Bennett suggested that in addition to the numbers based on populations that an attempt needs to be made to get traffic counts included as a component into the grant numbers. Bennett suggested that this is discussed with the Cabinet Secretary White.

ELECTED OFFICIALS REPORTS

Sheriff Lobb reported on the following (but not limited to the following): resignations; new hires - Deputies Adriano Maynes and Shane Bramblett, Undersheriff - Christopher Scheer; applied for and been granted funds for the STEP Program through the Traffic Safety Bureau in the amount of \$2K and \$10K for the Marijuana Eradication through the Drug Enforcement Agency; working on various investigations; several civil services; traffic citations; and working on/against various proposed gun laws.

Commissioner Kiesling reported on various concerns with proposed legislative bills; Kiesling spoke with Keith Barrus of the UCCDC (Union County Community Development Commission) and was told that there has not been a scheduled meeting for the UCCDC.

Chairman Bennett reported on an issue with New Mexico Counties regarding the Multiline Insurance, Workman's Comp, and the Law Enforcement Pools and the possibility of NMC combing all three into one pool in order to get better reinsurance rates on the Law Enforcement Pool so that reserves stay intact. Discussion followed. This issue will not be voted on until the June NMC Board meeting.

Meeting Announcements: The next regular meeting will be held on Tuesday, March 12, 2019, at 9:00 a.m. The next Joint Communications meeting is set for Tuesday, March 12, 2019, at 9:30 a.m.

ADJOURN: At 12:03 pm., Commissioner Vincent moved to adjourn after lunch. Commissioner Kiesling seconded. There was no further discussion. Vote: All YES. Motion carried. Meeting adjourned.

**Board of County Commission
Union County, New Mexico**

ATTEST

Justin K. Bennett - Chairman

SEAL

W. Carr Vincent - Vice Chairman

Mary Lou Harkins - Clerk

Clayton F. Kiesling - Member

FINAL AGENDA
Joint Communication Meeting
Town/County/Clayton Schools
Tuesday March 12, 2019 9:30am
Union County Courthouse Annex Building

Call to order

Pledge of Allegiance

Approval of Agenda*

Document Approvals:*

A. December 11, 2018 Meeting Minutes

Visitors

Old Business*

New Business*

A. Tiffany Roth - Eastern Area Workforce Development Board;
Workforce Resources for Union County

Reports

Meeting Announcement

A. Next regular scheduled Joint Communications Meeting will be
Tuesday, June 11, 2019 at 9:30am – Union County Courthouse Annex
Building

Adjournment

***Action Items**

Joint Communications Meeting
Town - County - Clayton Municipal School District
Tuesday, December 11, 2018

PRESENT:

Justin K. Bennett - Union County Commission Chairman
Walter C. Hall - Union County Commissioner
Brandy Thompson - Union County Treasurer
James Lobb - Union County Sheriff
Russell Kear - Union County Road Superintendent
Ernest Sanchez - Town of Clayton Mayor
Judy Steen - Town of Clayton Trustee
Renee Valdez - Town of Clayton Clerk/Treasurer

W. Carr Vincent - Union County Commissioner
Mary Lou Harkins - Union County Clerk
Angie Gonzales - Union County Manager
Dusty Russell - Union County Emergency Mgr.
Ferron Lucero - Town of Clayton Manager
Coby Beckner - Town of Clayton Trustee

ABSENT:

Deano Arellano - Town of Clayton Trustee
Stacy Diller - Clayton Municipal Schools Superintendent

Leroy Montoya - Town of Clayton Trustee

VISITORS:

Jim Mayfield - C&C Communications
Sue Richardson - Union County Leader Reporter
Pat Woods - State Senator
Talisha Valdez - Union County Extension Agent
Clayton Kiesling - Commissioner-Elect
Raymond Mondragon - Eastern Plains Council of Governments/Government Affairs
Vincent Soule - Eastern Plains Council of Governments/Transportation Planner

Justin Drumm - Town of Clayton Fire Chief
Jack Chatfield - State Representative-Elect

Mayor Sanchez called the meeting to order at 9:43 a.m., in the Union County Courthouse Annex meeting room. The Pledge of Allegiance was recited.

APPROVAL OF AGENDA & DOCUMENT APPROVAL: Mayor Sanchez called for the approval of the agenda. No additions or amendments were made.

Commissioner Vincent moved to approve the agenda. Commissioner Hall seconded. There was no further discussion. Vote: All YES. Motion carried. Agenda approved.

Mayor Sanchez called for the approval of the meeting minutes of September 11, 2018.

Commissioner Vincent moved to approve the minutes. Trustee Beckner seconded. There was no further discussion. Vote: All YES. Motion carried. The minutes were signed.

Introductions were made around the room.

VISITORS: Senator Pat Woods, Representative-Elect Jackey Chatfield, Raymond Mondragon of the Eastern Plains Council of Governments (EPCOG) and Vincent Soule the Transportation Planner of EPCOG.

- Senator Woods commented on the climate of upcoming legislative session, a new Governor as well as change in the House of Representatives, bills and discussions will likely include health care, movement to ban fracking on state land, gun control, and school security. Woods also reported on committee assignment changes in the Senate. Senate assignments are done according to seniority.
- Representative-Elect Chatfield commented that there may be a very high number of bills to be considered during the upcoming session. Chatfield commented that he will vote against any gun control and would like to see retired New Mexico State Police as school security officers. Both Woods and Chatfield encouraged attendees to contact them with any legislative concerns. Chatfield hoped to receive Ag & Water and/or Education committee assignments as his priorities.
- Raymond Mondragon reported on the various functions performed by the Eastern Plains Council of Governments (EPCOG)/Government Affairs and Transportation and the different ways that the council can assist local governments. EPCOG currently represents seven counties on the east side of the State: Curry, Roosevelt, De Baca, Guadalupe, Quay, Union and Harding Counties.

Mondragon extended an invitation to the attendees to the New Mexico Industrial Development Executives Association's (NM IDEA) Legislative reception in Santa Fe on January 23 from 5-7 p.m. Mondragon is the current President-Elect of this association. Mondragon stated he is hopeful for an appointment within Governor Lujan-Grisham's administration.
- Vincent Soule, Transportation Planner reminded attendees that Union County falls within the Northeast Regional Transportation and Planning Organization (NERTPO). Soule's area includes all of the eastern side of New Mexico which includes fifteen (15) counties and their municipalities. Soule explained his position within EPCOG.
- Senator Woods and Representative-Elect Chatfield spoke about the State's severance tax money and how Capital Outlay monies are divided amongst the counties and municipalities they represent. Chatfield recently met with the Governor at a training and learned that roads, education, and healthcare will be her administrations priorities. Chatfield would like to see that 20% of the severance money be held in reserves instead of the historic 5%.
- Mondragon reported that the State's Fire Marshall just released funding and Sedan received \$100,000.00 to be used towards equipment.

OLD BUSINESS: Union County/Town of Clayton Comprehensive Plan

Pursuant to the last Joint Communications Meeting held on September 11, 2018, it was approved that Mgr. Lucero would reach out to Scott Verhines, Consulting Engineer at Stantec to see how much it would cost to work towards a planning grant. Lucero reported that he has asked Verhines for a cost

proposal. If the proposal is received in time, it will be discussed during the Town's meeting on December 12th. Actions taken during the October 9th work session with the County will then be ratified. Chairman Bennett asked that the County be notified of the cost proposal.

NEW BUSINESS:

Renewal of the Joint Powers Agreement (JPA): Mgr. Gonzales reminded attendees that the JPA pertains to the Emergency Manager's duties and is between the Town and the County and ultimately approved by the Department of Finance (DFA). The term of the agreement is effective for a one (1) year term from the date of approval made by DFA unless otherwise terminated. Extension and renewal of the agreement may be renewed in one (1) year increments upon written request of either party subject to written approval by the County and Town. The last agreement was approved on December 12, 2017. Duffy Rodriguez of DFA signed the agreement on December 18, 2017. Mgr. Gonzales asked that the Town and County consider a one (1) year renewal. TOC Mgr. Lucero agreed and recommended the submission of a one (1) page document extending the agreement.

Trustee Coby Beckner moved to approve the preparation and submission of a one (1) page document showing approval for a one (1) year extension to the Joint Powers Agreement. Commissioner Vincent seconded. There was no further discussion. Vote: All YES. Motion carried.

Repair of the Town of Clayton's Cemetery Roads: Mayor Sanchez asked that the County's Road Department assist with operator time and equipment for needed repairs to roads within the cemetery, particularly the north and south road on the west side. Sanchez reported that there are road materials left over from the airport runway project that might be available. Sanchez reported that Ross Carter will also donate crusher fines if necessary. Mondragon of EPCOG suggested that this project be listed as a Capital Out-Lay funding requests and that the New Mexico Department of Transportation may donate millings which would save a considerable amount of money. Mondragon reported that Texico's cemetery roads were recently repaired through this avenue. Soule the EPCOG transportation planner warned that donations used from projects that were funded with federal funds come with stipulations. Mgr. Lucero suggested that caliche be used for base material and commented on the drainage problems that exist which need to be addressed.

REPORTS: Emergency Manager Dusty Russell reported on the following: Next **Local Emergency Planning Committee (LEPC)** meeting is on January 15, 2019, at 10:00 a.m. at the Sheriff's Office followed by the quarterly trauma meeting at noon; The 2018 Emergency Management Performance Grant (EMPG) is being worked on. This grant will be used for radio equipment in units for himself, TOC Fire Chief Justin Drumm and UC Fire Coordinator Jim O'Bryant; **SHSGP (State Homeland Security Grant Program)** grant was applied for but not granted. The focus was on larger populations and terrorism. Russell will reapply next year; **Hazard Mitigation Grant** will be worked on after the first of the New Year. Russell will be coordinating efforts with Homeland Security for the services of a contractor for hazard mitigation planning purposes; **Communications (Dispatch & Fire Departments)** Russell is moving forward with the Sedan frequency project which should be completed by February. The bid was awarded to Baca Valley and the equipment was ordered and will be shipped on or after December 31st; A Motorola **CAD (Computer Aided Dispatch)** will be implemented when the new dispatch console system comes in. Clayton PD will continue to use their current CAD system in their vehicles until they find a system that integrates and is beneficial to all users. Demonstrations are forth coming. Russell reminded attendees that each department will have to financially contribute towards the cause; **NMroads.com** currently shows our area with an alert for highway 456, 551, 370 and 406 that

shows that these roads are impassable during inclement weather. The alert will remain in effect until the winter season ends; Use of winter road closure gates remains an issue. An effort is being made to coordinate road closures/warnings with Google Maps; A First Responder Class will be held in Des Moines, in January and a Basic First Responder Class in Raton or in Des Moines depending on the number of enrollees. The Des Moines location will accommodate people from both Raton and Clayton; On January 9th there will be WIPP Hazmat meeting in Raton.

Chairman Bennett reported that pursuant to the winter meeting in Raton, there will be an effort made to use sign boards to show that the Raton Pass is closed so that Raton is not overflowing with stranded motorists.

MEETING ANNOUNCEMENT: The next regular Joint Communications meeting date is scheduled for Tuesday, March 12, 2019, at 9:30 a.m., at the Union County Courthouse Annex Building.

ADJOURNMENT: At 10:37 a.m., Commissioner Vincent moved to adjourn. Commissioner Hall seconded. There was no further discussion. Vote: All YES. Motion carried. The meeting was adjourned.

UNION COUNTY

TOWN OF CLAYTON

UC Chairman Justin Bennett

TOC Trustee Coby Beckner

UC Commissioner Walter C. Hall

NOT PRESENT

TOC Trustee Leroy Montoya

UC Commissioner W. Carr Vincent

NOT PRESENT

TOC Trustee Deano Arellano

TOC Trustee Judy Steen

CLAYTON SCHOOL DISTRICT

NOT PRESENT

Stacy Diller

Superintendent Clayton Municipal School District

ATTEST:

Mary Lou Harkins

Union County Clerk

NEW MEXICO PUBLIC REGULATION COMMISSION

COMMISSIONERS

DISTRICT 1 CYNTHIA B. HALL
DISTRICT 2 JEFFERSON L. BYRD
DISTRICT 3 VALERIE ESPINOZA, VICE CHAIR
DISTRICT 4 THERESA BECENTI-AGUILAR, CHAIR
DISTRICT 5 STEPHEN FISCHMANN



P.O. Box 1269
1120 Paseo de Peralta
Santa Fe, NM 87504-1269

Don Shainin, State Fire Marshal
Phone (505) 476-0160
Fax (505) 476-0100

INTERIM CHIEF OF STAFF

Jason N. Montoya, P.E.

March 7, 2019

Angie Gonzales
Union County Manager
PO Box 430
Clayton, NM 88415

Ms. Gonzales:

The request that you submitted on March 4, 2019 on behalf of Union County Admin for the purchase of a Communications Tower have been approved. The Union County Admin is authorized to use fire protection Fund monies for the purchase of the Communications Tower. Please submit the Communication Site Donation Agreement with all signatures as soon as it is agreed upon by the commission.

"This letter shall serve as approval to expend fire protection fund monies to finance the cost of a Communications Tower. The Union County Admin is currently and ISO rating of 7 with a minimum yearly Fire Protection Fund Allocation of \$55,501.00.00"

If there are any major changes in the specifications that are made prior to bidding procedures, this office must approve the changes or this authorization of expenditure shall be rendered null and void.

If you anticipate a loan, I recommend that you contact the New Mexico Finance Authority {NMFA} at 505-984-1454 to finance the Communications Tower. A loan through NMFA will be at minimal interest.

This letter shall serve as authorization for you to enter into an agreement with NMFA for the commitment of fire protection fund monies.

For future references, please be reminded that all purchases shall be in accordance with the policies and guidelines of your governing body, the provisions of the Public Purchase Act, and as approved by the New Mexico Department of Finance and Administration.

If you should have any questions please do not hesitate to contact me at 505-819-8285.

A handwritten signature in cursive script that reads "Eloy Prada".

Sincerely,
Eloy Prada
Fire Service Coordinator
New Mexico State Fire Marshal's Office

COMMUNICATIONS SITE DONATION AGREEMENT

This Communications Site Donation Agreement (the "Agreement") made this ____ day of _____, 2019, between Durrett Cattle (hereinafter "DONOR "), and the Board of County Commissioners of Union County, a political subdivision of the State of New Mexico (hereinafter "DONEE"). DONOR and DONEE are at times collectively referred to hereinafter as the "Parties."

WITNESSETH

In consideration of the mutual covenants contained herein and intending to be legally bound hereby, the Parties hereto agree as follows:

1. GRANT. In accordance with this Agreement, DONOR hereby grants to DONEE the right to construct and maintain a communications site approximately forty-three (43) miles North of Clayton, latitude N 36,55,49.0 and Longitude W 103,16,30.8, as shown on Exhibit A (location map) ("the Property"). DONEE shall be entitled to construct on the premises a livestock-proof fence forming a site that is fifty (50) feet by fifty (50) feet, and to construct within the fence an eighty (80) foot tower with an attached ten (10) foot antenna, a Motorola analog repeater, software and associated equipment which will be located within a metal enclosure within the fenced area adjacent to the antenna (the "Premises"). DONEE shall be entitled to access the site by means of a small road that extends to the site from Sloan Canyon Road, a County Road, and DONEE shall be entitled to use said road at all times to maintain the radio equipment at the Communications site. The Premises are shown in detail on Exhibit "B" attached hereto and made a part hereof.

2. TERM. This Agreement shall be effective as of the date of execution by both Parties ("Effective Date"). The initial term of the Agreement shall be for TEN (10) years beginning on the Commencement Date (as hereinafter defined). The "Commencement Date" shall be the first day of the month in which DONEE begins installation of DONEE's communications equipment.

3. ELECTRICAL.

(a) DONEE intends to provide power for its operation at the tower site by generator and/or solar panels.

In the event DONEE determines central power from a providing utility is desired then DONEE will discuss its needs and plans in that regard with DONOR. DONOR will, within fifteen (15) days of receipt of DONEE'S request to connect to a central power source; grant or deny DONEE'S request to install central power and if DONOR does grant DONEE'S request all costs associated with the installation, maintenance and operation of the tower site will be the expense of DONEE.

4. DONEE'S employees, officers, contractors or invitees shall not possess firearms on DONOR'S property; shall not litter; shall drive only on established roads and trails and shall leave any gates in the condition in which they find them, open or closed. DONEE shall not conduct any inspections or operations on DONOR's land between the hours of 3:00 pm and 9:00 am during the hunting season which shall be from September 20 to December 31 each year.

5. DONEE shall not assign its rights under this agreement and shall not permit any other person or entity to tie onto or use the communication tower and facilities permitted by this agreement. The purpose of this donation agreement is to provide communication assets to the Union County Fire Departments. That purpose defines the burden on DONOR'S lands imposed by this agreement.

6. IMPROVEMENTS. DONEE shall have the right and responsibility to construct, maintain, replace, repair, add or otherwise modify its communications equipment, antennas, conduit or other improvements or any portion thereof and the frequencies over which the communications equipment operates, whether or not any of the communications equipment, antennas, conduits or other improvements are listed on any exhibit.

7. GOVERNMENT APPROVALS. DONEE'S use is contingent upon DONEE obtaining all of the certificates, permits and other approvals (collectively the "Government Approvals") that may be required by any Federal, State or Local authorities (collectively, the "Governmental Entities"). DONOR shall cooperate with DONEE in its effort to obtain such approvals and shall take no action which would adversely affect the status of the Property with respect to DONEE'S Use.

8. TERMINATION. DONEE may, unless otherwise stated, immediately terminate this Agreement upon written notice to DONOR in the event that (i) any applications for such Governmental Approvals should be finally rejected; (ii) any Governmental Approval issued to DONEE is canceled, expires, lapses or is otherwise withdrawn or terminated by any Government Entity; (iii) DONEE determines that such Governmental Approvals may not be obtained in a timely manner; (iv) Reserved; (v) DONEE, in its sole discretion, determines the Use of the Premises is obsolete or unnecessary; (vi) with 3 months prior notice to DONOR, upon the annual anniversary of the Commencement Date; or (vii) at any time before the Commencement Date for any reason or no reason in DONEE'S sole discretion.

9. MAINTENANCE. DONEE will maintain DONEE'S communication equipment within the Premises in good condition, reasonable wear and tear and casualty damage excepted.

10. INSURANCE.

(a) DONEE shall, at its own cost and expense, maintain a policy of public liability insurance in force through the New Mexico County Insurance Authority (NMCIA) with limits commensurate with the New Mexico Tort Claims Act (NMSA 1978, Section 41-1-1 *et seq.*), in coverage amounts not less than \$1,050,000 combined single limit, to protect DONOR and DONEE against claims for injury to or death of one or more persons in any one occurrence and for damage or destruction to property.

11. REMOVAL AT END OF TERM. Upon expiration or within ninety (90) days of earlier termination, DONEE shall remove DONEE'S Communications Equipment and restore the Premises to its original condition, reasonable wear and tear and casualty damage excepted. DONOR agrees and acknowledges that the communications equipment shall remain the personal property of DONEE and DONEE shall have the right to remove the same at any time during the Term, whether or not said items are considered fixtures and attachments to real property under

applicable laws. If such time for removal causes DONEE to remain on the Premises after termination of the Agreement, DONEE shall pay rent at the then existing monthly rate or on the existing monthly pro-rata basis if based upon a longer payment term, until the removal of the communications equipment is completed.

12. HOLDOVER. If upon expiration of the Term the Parties are negotiating a new lease or a lease extension, then this Agreement shall continue during such negotiations on a month to month basis. In the event that the Parties are not in the process of negotiating a new lease or lease extension and DONEE holds over after the expiration or earlier termination of the Term, then DONEE shall pay rent at the then existing monthly rate or on the existing monthly pro-rata basis if based upon a longer payment term, until the removal of the communications equipment is completed.

13. RIGHTS UPON SALE. Should DONOR, at any time during the Term of this Agreement decide (i) to sell or otherwise transfer all or any part of the Property, or (ii) to grant to a third party by easement or other legal instrument an interest in and to any portion of the Premises, such sale, transfer, or grant of an easement or interest therein shall be under and subject to this Agreement and any such purchaser or transferee shall recognize DONEE's rights hereunder. In the event that DONOR completes any such sale, transfer, or grant described in this paragraph without executing an assignment of the Agreement whereby the third party agrees in writing to assume all obligations of DONOR under this Agreement, then DONOR shall not be released from its obligations to DONEE under this Agreement, and DONEE shall have the right to look to DONOR and the third party for the full performance of the Agreement.

14. DONOR'S TITLE. DONOR represents and warrants to DONEE as of the Effective Date and covenants during the Term that DONOR has full authority to enter into and execute this Agreement and that there are no liens, judgments, covenants, easement, restrictions or other impediments of title that will adversely affect DONEE's Use.

15. NOTICES. All notices hereunder must be in writing and shall be deemed validly given if sent by certified mail, return receipt requested or by commercial courier, provided the courier's regular business is delivery service and provided further that it guarantees delivery to the addressee by the end of the next business day following the courier's receipt from the sender, addressed as follows (or any other address that the Party to be notified may have designated to the sender by like notice):

DONOR:

Durrett Cattle
Attention: Will Durrett
will_durrett@yahoo.com
(806) 433-6601

DONEE:

Union County

Attention: Jim O'Bryant
Union County
100 Court Street
Clayton, New Mexico
(505) 207-7233

Notice shall be effective upon actual receipt or refusal as shown on the receipt obtained pursuant to the foregoing.

16. SUBORDINATION AND NON-DISTURBANCE. [Reserved].

17. DEFAULT. It is a "Default" if (i) either Party fails to comply with this Agreement and does not remedy the failure within thirty (30) days after written notice by the other Party or, if the failure cannot reasonably be remedied in such time, if the failing Party does not commence a remedy within the allotted thirty (30) days and diligently pursue the cure to completion within ninety (90) days after the initial written notice, or (ii) DONOR fails to comply with this Agreement and the failure interferes with DONEE's Use and DONOR does not remedy the failure within five (5) days after written notice from DONEE or, if the failure cannot reasonably be remedied in such time, if DONOR does not commence a remedy within the allotted five (5) days and diligently pursue the cure to completion within fifteen (15) days after the initial written notice.

18. REMEDIES. In the event of a Default, without limiting the non-defaulting Party in the exercise of any right or remedy which the non-defaulting Party may have by reason of such default, the non-defaulting Party may terminate this Agreement and/or pursue any remedy now or hereafter available to the non-defaulting Party under the Laws or judicial decisions of the State in which the Property is located. Further, upon a Default, the non-defaulting Party may at its option (but without obligation to do so), perform the defaulting Party's duty or obligation. The costs and expenses of any such performance by the non-defaulting Party shall be due and payable by the defaulting Party upon invoice therefor. If DONEE undertakes any such performance on DONOR's behalf and DONOR does not pay DONEE the full undisputed amount within thirty (30) days of its receipt of an invoice setting forth the amount due, DONEE may offset the full undisputed amount due against all fees due and owing to DONOR under this Agreement until the full undisputed amount is fully reimbursed to DONEE.

19. ENVIRONMENTAL. DONEE shall conduct its business in compliance with all applicable laws governing the protection of the environment or employee health and safety ("EH&S Laws"). DONEE shall indemnify and hold harmless the DONOR from claims to the extent resulting from DONEE's violation of any applicable EH&S Laws or to the extent that DONEE causes a release of any regulated substance to the environment. DONOR shall indemnify and hold harmless DONEE from all claims resulting from the violation of any applicable EH&S Laws or a release of any regulated substance to the environment except to the extent resulting from the activities of DONEE. The Parties recognize that DONEE is only licensing a small portion of DONOR's property and that DONEE shall not be responsible for any environmental condition or issue except to the extent resulting from DONEE's specific activities and responsibilities. In the event that DONEE encounters any hazardous substances that do not result from its activities, DONEE may relocate its facilities to avoid such hazardous substances to a mutually agreeable

location or, if DONEE desires to remove at its own cost all or some of the hazardous substances or materials (such as soil) containing those hazardous substances, DONOR agrees to sign any necessary waste manifest associated with the removal, transportation and/or disposal of such substances.

20. APPLICABLE LAWS. During the Term, DONOR shall maintain the Property in compliance with all applicable laws, EH&S Laws, rules, regulations, ordinances, directives, covenants, easements, consent decrees, zoning and land use regulations, and restrictions of record, permits, building codes, and the requirements of any applicable fire insurance underwriter or rating bureau, now in effect or which may hereafter come into effect (including, without limitation, the Americans with Disabilities Act and laws regulating hazardous substances) (collectively "Laws"). DONEE shall, in respect to the condition of the Premises and at DONEE's sole cost and expense, comply with (i) all Laws relating solely to DONEE's specific and unique nature of use of the Premises; and (ii) all building codes requiring modifications to the Premises due to the improvements being made by DONEE in the Premises. It shall be DONOR's obligation to comply with all Laws relating to the Property, without regard to specific use (including, without limitation, modifications required to enable DONEE to obtain all necessary building permits).

[Signature page follows. The remainder of this page is intentionally blank.]

IN WITNESS WHEREOF, the Parties hereto have set their hands and affixed their respective seals the day and year first above written.

DONOR:
DURRETT CATTLE

By: Will Durratt
Name: Will Durratt
Title: owner & manager
Date: 2.10.19

DONEE:
THE BOARD OF COUNTY
COMMISSIONERS OF
UNION COUNTY

By:
Its: CHAIRMAN

APPLICATION FOR LAW ENFORCEMENT PROTECTION FUNDS
 FOR CLASS 1 MUNICIPALITIES AND COUNTIES
 PURSUANT TO CHAPTER 29, ARTICLE 13 NMSA 1978
 FOR THE JULY 1, 2018 - JUNE 30, 2019 FISCAL YEAR

I. Municipality or County: Union County

II. Computation of Proposed Distribution:

A. Class 1 (Population per 2010 Census = 0 to 20,000) \$20,000

B. Total Number of Full-Time Certified Police Officers
 or Sheriff Deputies (*) multiplied by \$600 (**):

4 X \$600 = 2400

(*) Each officer or Deputy listed on Supplemental Schedule (page 2) must be certified by the New Mexico Police Academy pursuant to Section 29-7-8 NMSA or authorized as a New Mexico Peace Officer pursuant to Section 29-1-11 NMSA. Certification status of officers for whom the award is requested must be current on the March 31, 2018 DPS Registry or officers must be enrolled in the New Mexico Police Academy with an anticipated graduation date prior to or on July 1, 2018.

C. Total Requested Distribution** (A + B) 22400

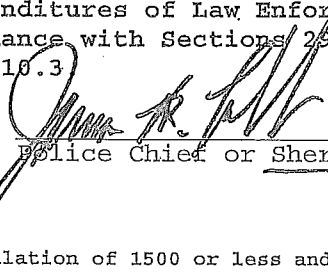
III. Amounts distributed from the Law Enforcement Protection Fund must be expended only for the purposes allowed by Section 29-13-7 NMSA 1978. Itemize the proposed use of these funds below:

A.	Repair and purchase of law enforcement apparatus and equipment (itemized schedule, page 3, must be completed) ¹ which meet minimum nationally recognized standards. (Please Note: regular maintenance on vehicles and police equipment; office furniture and supplies; or operating expenses are not allowable expenses) Rule 2 NMAC 110.3	\$22400
B.	Expenses associated with advanced law enforcement planning and training.	
C.	Complying with match or contribution requirements for the receipt of federal funds relating to criminal justice programs.	
D.	No more than fifty percent (50%) of the replacement salaries of law enforcement personnel participating in basic law enforcement training.	
E.	New Mexico Finance Authority Loan Intercept Agreement.	
F.	TOTAL REQUESTED EXPENDITURES**	\$22400

**Total Requested Expenditures (Section III) must equal Total Requested Distribution (Section II).

IV. CERTIFICATION: Under penalty of law, we hereby certify that to the best of our knowledge and belief, the information contained in this application is correct, and that all expenditures of Law Enforcement Protection Fund monies will be made in accordance with Sections 29-13-7 and 29-13-9 NMSA 1978 as well as Rule 2 NMAC 110.3

 Mayor/Chairman


 Police Chief or Sheriff

02/12/2019
 Date

¹ Pertains only to municipalities with a population of 1500 or less and universities.

UNION COUNTY SUBDIVISION ORDINANCE
CLAIM OF EXEMPTION
Page 1 of 3

To claim an exemption from the requirements of the Union County Subdivision Ordinance, you must complete this form, sign it before a notary public and submit it together with legible copies of all required documents to the Union County Board of Commissioners. Be sure to check all exemptions which apply and attach legible copies of all supporting documents.

The Union County Board of Commissioners will notify you in writing within thirty (30) days as to whether your claim of exemption has been granted. If the claim of exemption is granted, or if you do not hear from the Board of Union County Commissioners within thirty (30) days, you may proceed with the land division you propose without needing to comply with the requirements of the Union County Subdivision Regulations. If your claim of exemption is denied, you may either seek approval of a subdivision or appeal the denial as provided in, the Union County Subdivision Regulations.

I, J. T. McAdams & Annie McAdams, claim exemption from the requirements of the New Mexico Subdivision Act and the Union County Subdivision Regulations for the following reason(s). I certify that this transaction involves:

- the sale, lease or other conveyance of any parcel that is thirty-five (35) acres or larger in size within any twelve (12) month period, provided that the land has been used primarily and continuously for agricultural purposes, in accordance with §7-36-20 NMSA 1978, for the preceding three (3) years. ATTACH CERTIFIED SURVEY SHOWING SIZE AND LOCATION OF PARCEL.

- the sale or lease of apartments, offices, stores or similar space within a building. ATTACH COPIES OF ALL PROPOSED SALE OR LEASE DOCUMENTS.

- the division of land within the boundaries of a municipality. ATTACH CERTIFIED SURVEY SHOWING LOCATION OF PROPOSED DIVISION.

- the division of land in which only gas, oil, mineral or water rights are severed from the surface ownership of the land. ATTACH COPIES OF ALL PROPOSED CONVEYANCING DOCUMENTS.

- the division of land created by court order where the order creates no more than one parcel per part. ATTACH CERTIFIED COPY OF COURT ORDER.

- the division of land for grazing or farming activities provided that the land continues to be used for grazing or farming activities. ATTACH COPY OF PROPOSED CONVEYANCING DOCUMENTS AND DOCUMENTS RESTRICTING FUTURE USE TO GRAZING OR FARMING ACTIVITIES. SUCH DOCUMENTS MUST CONTAIN A COVENANT, RUNNING WITH THE LAND AND REVOCABLE ONLY BY MUTUAL CONSENT OF THE BOARD OF COUNTY COMMISSIONERS AND THE PROPERTY OWNER THAT THE DIVIDED LAND WILL BE USED EXCLUSIVELY FOR GRAZING OR FARMING ACTIVITIES. THE COVENANT MUST BE SIGNED BY THE PROPERTY OWNER, THE BUYER OR LESSEE, AND THE BOARD OF COUNTY COMMISSIONERS AND MUST BE FILED OF RECORD WITH THE COUNTY CLERK

- the division of land resulting only in the alteration of parcel boundaries where parcels are altered for the purpose of increasing or reducing the size of contiguous parcels and where the number of parcels is not increased. ATTACH CERTIFIED SURVEYS SHOWING ALL PARCELS AND PARCEL BOUNDARIES BEFORE AND AFTER PROPOSED ALTERATION.

- the division of land to create a parcel that is sold or donated as a gift to an immediate family member; however, this exception shall be limited to allow the seller or donor to sell or give no more than one parcel per tract of land per immediate family member. As used herein the term "immediate family member" means a husband, wife, father, stepfather, mother, stepmother, brother, stepbrother, sister, stepsister, son,

UNION COUNTY SUBDIVISION ORDINANCE
CLAIM OF EXEMPTION
Page 2 of 3

stepson, daughter, stepdaughter, grandson, step-grandson, granddaughter, step-granddaughter, nephew and niece, whether related by birth or adoption. ATTACHED COPY OF PROPOSED CONVEYANCING DOCUMENT AND A DOCUMENT DEMONSTRATING FAMILY RELATIONSHIP CLAIMED. BAPTISMAL CERTIFICATES ARE NOT ACCEPTABLE DOCUMENTATION.

- _____ the division of land created to provide security for mortgages, liens or deeds of trust; provided that the division is not the result of a seller-financed transaction. ATTACH COPIES OF ALL FINANCING DOCUMENTS.
- _____ the sale, lease or other conveyance of land that creates no parcel smaller than one hundred forty (140) acres. ATTACH CERTIFIED SURVEY SHOWING LOCATION AND SIZE OF PARCEL(S).
- _____ the division of land to create a parcel that is donated to any trust or nonprofit corporation granted an exemption from federal income tax, as described in § 501(c)(3) of the United States Internal Revenue Code of 1986, as amended; school, college or other institution with a defined curriculum and a student body and facility that conducts classes on a regular basis; or to any church or group organized for the purpose of divine worship, religious teaching or other specifically religious activity. ATTACH COPIES OF I.R.S. EXEMPTION LETTER, AND/OR DOCUMENTS DEMONSTRATING ENTITLEMENT TO EXEMPTION AND CERTIFIED SURVEY SHOWING LAND PROPOSED TO BE DONATED.
- _____ the sale, lease or other conveyance of a single parcel from a tract of land, except from a tract within a previously approved subdivision, within any five (5) year period; provided that a second or subsequent sale, lease or other conveyance from the same tract of land within five (5) years of the first sale, lease or other conveyance shall be subject to the provisions of the New Mexico Subdivision Act and these Regulations; provided further that a survey shall be filed with the county clerk indicating the five (5) year holding period for both the original tract and the newly created tract ATTACH CERTIFIED SURVEY SHOWING SIZE AND LOCATION OF ORIGINAL TRACT, PARCEL PROPOSED TO BE DIVIDED, ANY PARCELS PREVIOUSLY DIVIDED FROM THE ORIGINAL PARCEL AND DATES OF ALL DIVISIONS.

I further certify that the information provided by me in this Claim of Exemption is true and correct and that all documents attached to or enclosed with this Claim of Exemption are originals or true, complete and correct copies of the originals.

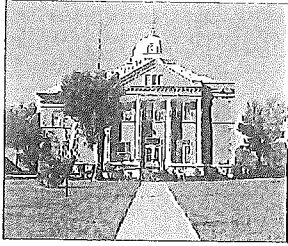
Année M. Adams
Signature

Année M. Adams
Print your name here

623 Boise City Hwy.
Address

Clayton, N.M. 88415
City, state and zip code

575-374-9545
Telephone number(s)



Union County
P.O. Box 430
Clayton N.M. 88415
Phone: 575-374-8896
Fax: 575-374-2763
Website: Unionnm.us

Justin Bennett - Chairman
W. Carr Vincent
Clayton Kiesling

Angie Gonzales
County Manager
The Law Offices of Stephen C. Ross
County Attorney

Resolution No. 107-20

Authorization of the County Manager to review and complete the purchase of the Kiser Building.

WHEREAS, The Board of Commissioners have directed the County Manager to be available to complete the purchase agreement and the final purchase documents on behalf of the Board of Commissioners.

DONE at Clayton, County of Union this 12th day of March, 2019

BOARD OF COMMISSIONERS - UNION COUNTY

A T T E S T
S E A L

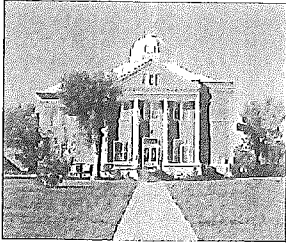
UNION COUNTY COMMISSION

Mary Lou Harkins, County Clerk

Justin Bennett, Chairman

W. Carr Vincent, Member

Clayton Kiesling, Member



County Commissioners
Justin Bennett - Chairman
W. Carr Vincent
Clayton Kiesling

Union County
P.O. Box 430
Clayton N.M. 88415
Phone: 575-374-8896
Fax: 575-374-2763
Website: Unionnm.us

Angie Gonzales
County Administrator

Resolution #107-21
2019 Road Audit

We, the Board of Commissioners, County of Union, New Mexico do hereby certify to the best of our knowledge that Union County has 1,188.99 miles of county maintained roads.

Passed, adopted and approved, this 12th day of March, 2019, at the regularly scheduled meeting of the County of Union Board of Commissioners.

BOARD OF COMMISSIONERS - UNION COUNTY

Justin Bennett, Chairman

W. Carr Vincent, Member

Clayton Kiesling, Member

ATTEST

Mary Lou Harkins, County Clerk

UNION COUNTY MAINTAINED ROUTE DESCRIPTION
For Annual Certified County Maintained Mileage Report
Year 2019

Bolinger	From Clayton 6 mi SE on US 87/84	N to end of route	0.351	18	3	Bladed well maintained
Bolz	From Jct SR 402/Robertson Rd	S to end of route	1.022	18	3	Bladed well maintained
Boot	Begin in Mt. Dora, NM		0.069	16	4	Bladed well maintained
Britt	From Jct Harding Co Line and Sr 420					
Browder	Then S 3 mi and E 1.50 mi on lone Rd	Then S 2 mi E 1.75 mi to lone Rd intersection	3.745	20	4	Bladed well maintained
Brown	From Jct SR 562/Clapham Rd W and S 3.50 mi	N to end of route	5.969	20	3	Bladed well maintained
Bryan	From Des Moines approx. 15 mi on Ridge Rd	N to end of route	0.623	16	4	Bladed well maintained
Buck	From Gladstone 1 mi S on Gladstone Rd	E to end of route	1.519	18	3	Bladed well maintained
Bullard	From Clayton N 20 mi on SR 370	NE to end of route	0.166	16	4	Bladed well maintained
Burrows	From Gladstone 1 mi E on US 56/412	N 1 mi and W 1 mi to end of route	2.043	18	3	Bladed well maintained
Bush	Jct SR 402/Campsey Rd 2 mi E then 1 mi S on McKay Rd	SE to end of route	2.391	22	3	Bladed well maintained
Butt	From Jct SR 421/SR 402 1.75 mi S	E to end of route	0.415	18	3	Bladed Fair
Cain	From Jct SR 562/SR 402 1 mi E on Plainview	S to end of route	0.247	16	4	Bladed well maintained
Callis	From Jct SR 102/SR 402 1.5 mi N	W to end of route	1.565	22	4	Bladed well maintained
Campbell	From Jct SR 402/Boggs Rd - 3 mi E	N and S both sides to end of route	10.805	22	3	Bladed well maintained
	From Seneca 1 mi N on SR 406					
	then W/NW/S/W					
Campsey	From Clayton 6.5 mi S on SR 402	N to end of route	31.508	22	3 & 4	Bladed well maintained
Can Do	From Jct Koger Rd/Romero Rd 1 mi E	E to Texas State Line	7.804	22	4	Bladed well maintained
Canfie	From Jct Koger Rd/SR 402 2 mi W	N to end of route	0.197	18	3	Bladed Fair
Cedar Creek	From Grenville 12.5 mi S on SR 453	S to end of route	1.209	22	4	Bladed well maintained
Cerrito Blanco	From Jct 56/412/SR 120 5.50 mi S	E to Heringa Rd intersection	10.401	22	3 & 4	Bladed well maintained
Chapman	From Jct SR 325/SR 370 5 mi S	SE to Passamonte Rd intersection	5.413	22	4	Bladed well maintained
Creeds Chapel	From Jct SR 406/Seneca Rd 4 mi E	W to end of route	0.576	20	3	Bladed well maintained
Cinch	From Jct SR 420/SR 402 2 mi N	S to end of route	2.454	20	3	Maintained
Clapham	From Clayton 18 mi S on SR 402	W to end of route	0.583	18	3	Bladed well maintained
Comay	From Capulin 3.5 mi N on SR 325	W cross Thomas Hwy then W and S to Thomas Hwy	11.393	22	4	Bladed well maintained
Corumpa	From Jct SR 406/Campbell Rd 3 mi W 1 mi N	N/W to SR 325	5.74	20	3 & 4	Bladed well maintained
Cottonwood	From Clayton 2 mi W on US 56/412	N/E/N to Antencio Rd intersection	9.95	22	4	Bladed well maintained
County Line	From Capulin 3 mi S on Kiowa Rd	S to end of route	0.734	22	4	Bladed well maintained
	0.5 mi W on Wrangler Rd	then				
Cowan	From Jct SR 402/Boggs Rd 6 mi E	S to end of route	5.994	22	3 & 4	Bladed well Maintained
Craft	E of Jct SR 562/Kyea Rd	S to end of route	12.042	22	3 & 4	Bladed well Maintained
Creighton	From Clayton 14 mi S on SR 402	E to Anderson Rd	4.993	22	4	Bladed well Maintained
Cross L	From Folsom 20 mi E on SR 325	W to end of route	0.263	22	3	Bladed well Maintained
Cuates	22 Mi N SR 406- 5 mi E	N to end of route	1.02	16	3	Bladed Fair
Cut Off	From Jct. SR 402/SR 120 S	N then W to Pacheco Rd	4.977	20	4	Bladed well Maintained
D-Bar	From Jct US 87/65/ Kennedy Rd 5.5 mi S	S to Thompkins Rd	0.852	20	4	Bladed well Maintained
Daniel	From Jct Sr 456/Bechtel Rd 2.70 mi E	E to end of route	2.92	18	4	Bladed well Maintained
Daves	From US 56/412 Barney Rd 5 mi S	S to end of route	0.415	16	4	Fair
David Place	From Jct SR 551/SR 456 3 mi E	S to Bluefron Rd	9.242	20	3	Bladed well Maintained
Davis	From Jct Wiley Rd/Cedar Creek Rd SW 0.45 mi	S to end of route	0.856	18	3	Bladed Fair
Dead End	From Gladstone 4 mi 3 on US 56/412	Then S/E to Wiley Rd intersection	0.814	16	3	Bladed Fair
		N to end of route	3.298	16	3	Bladed Fair

UNION COUNTY MAINTAINED ROUTE DESCRIPTION
For Annual Certified County Maintained Mileage Report
Year 2019

ROUTE NAME	FROM: BEGINNING TERMINI	TO:	Maint. Miles	Rd Width	Roadway	Comments
Adobe	From Jct Seneca/SR 406 3 mi E	N to SR 406	1.977	20	Surface	3 Bladed well maintained
Alamos	From Campbell Rd 3 mi E SR 370 then S	W to SR 370	5.413	20		4 Bladed well maintained
Alope	From Seneca 2 mi S on SR 406	E to end of route	0.876	20		4 Bladed well maintained
Amisdad	From Des Moines 3.5 mi W	S to end of route	1.074	20		4 Bladed well maintained
Amistad Road	From Amistad School	E to Jct SR 402	0.617	20		4 Bladed well maintained
Anderson	From Jct SR 402/Clapham Rd W 1 mi	N to Craft Rd	4.005	20		4 Bladed well maintained
Anglin	From Jct SR 402/SR 65 W 5 mi	NW 2 mi.	2.075	16		3 Bladed well maintained
Angus	From Seneca	W 2 mi N 1 mi to end of route	3.029	22 3 & 4		3 Bladed Fair
Antelope Springs	Jct SR 402/SR 109 9 mi W to Horse Lake Rd	To end of county maintenance	6.076	20		3 Bladed well maintained
Apache Valley	From Clayton E on US 56/412 2.3 mi	N to end of route	0.145	18		2 Bladed well maintained
Archuleta	From Des Moines US 87/64 .07 mi. W	SW to end of route	0.655	18		4 Bladed well maintained
Arena	Begins at Hayden, NM	Ends Thru Hayden, NM	0.525	16		4 Bladed well maintained
Armijo	From Grenville 10 mi S SR 453 19 mi W on Sofia Rd					
Atchley	From Grenville 12.5 mi S on SR 453 then W	N to end of route	0.558	20		3 Bladed well maintained
Atencio	From Seneca 10 mi N then W	N to Sofia Rd to SR 370	11.535	20		4 Bladed well maintained
Bada	From Gladstone 2 mi W	S to end of route	16.715	20		4 Bladed well maintained
Baird	Jct SR 402/SR 417	S to end of route	3.306	20		3 Bladed well maintained
Barbell	From Clayton 12 mi W on US 56/SR 412	N to end of route	1.544	16		3 Bladed Fair
Barney	From Clayton 17 mi W on US 56/SR 412	N to end of route	1.584	16		3 Bladed well maintained
Barnhart	From Sedan 1 mi E to Perkins Rd S 2 mi	S to Pennington Rd	13.257	22		4 Bladed well maintained
Bates	From Clayton 9 mi S SR 402 1 mi W on Toney Rd	2 mi E to end of route	1.995	18		3 Bladed well maintained
Beamer	Jct SR 402/SR 421 E 1 mi	S to end of route	0.607	22		4 Bladed well maintained
Beard	From Gladstone 2 mi S 2 mi E on Roney	S to end of route	0.484	18		3 Bladed well maintained
Bechtel	From Ok St Line SR 456 20 mi W	S to end of route	0.835	16		3 Bladed well maintained
Belcheff	From Jct Sofia/Jones S then W then N	S to end of route	6.475	20		4 Bladed well maintained
Bell	From Clayton US 87/64 3 mi SE	To Jct with Sofia Rd	3.969	18		3 Bladed well maintained
Bella	From Clayton US 56/412 6 mi W	SW to end of route	1.227	22		4 Bladed well maintained
Bennett	From Des Moines 4 mi W on US 87/64	N to intersection of Heringa Rd	2.069	20		3 Bladed well maintained
Biffle	From Sofia N 1 mi to Jones Rd	N to end of route	1.328	20		4 Bladed well maintained
Birwell	From Seneca 1 mi W on Angus Rd	W/N to Gallegos Rd intersection	10.654	22		3 Bladed well maintained
Bison	From Capulin on SR 325 N 0.5 mi	N to Campbell Rd intersection	1.007	22		4 Well Maintained
Black Mesa	From Ok St Line 5.5 mi on SR 456	E to end of route	0.12			4 Well Maintained
Black Jack	From Jct SR 453/US 56/412 13 mi E	N/W/S to SR 456	6.369	22		4 Bladed well maintained
Blind Gap	From Grenville 1 mi E on Sand Mesa then 1 mi N on Irwin Rd	1 mi W to Wiley Rd intersection	1.118	22		4 Bladed well maintained
BlueFront	From Jct SR 562/Lovato Rd W	E/N to Weatherly Rd	9.554	20		3 Bladed well maintained
Boggs	From Jct SR 421/SR 402 N 5 mi both E/W	To end of route	12.355	22		4 Bladed well maintained
		E To St Line Hwy W to Anderson Rd	10.096	22		4 Bladed well maintained

UNION COUNTY MAINTAINED ROUTE DESCRIPTION
For Annual Certified County Maintained Mileage Report
Year 2019

Dixon	From Jct Texas StateLine/Plainview Rd 1 mi S	W to end of route	0.88	16	3	Bladed Fair
Doak	From Jct 56/412/SR 120 6 mi S to Cerrito Blanco Rd	SE to end of route	1.045	18	3	Bladed well Maintained
Dogie	From Jct SR 562/Reeser Rd 2 mi W	N to end of route	0.993	18	3	Bladed Fair
Doherty	From Folsom 1.5 mi E on SR 456	E to end of route	0.435	16	3	Bladed Fair
Don Carlos	From Gladstone 5 mi N on Grinde Rd	7 mi N/E to Sofia Rd	7.718	22	3	Bladed well Maintained
Echo Canyon Road	From SR 370/Pacheco Rd 0.5 mi N 1 mi E	N to end of route	2.08		3	Bladed well maintained
Drew	From Folsom 1.75 mi NW on SR 72	SW to end of route	0.377	18	4	Bladed Fair
Edmondson	From Jct US 87/64/Weatherly Rd 10 mi E then S 0.25 mi on Severo Rd	SE to end of route	1.369	18	3	Bladed well Maintained
Eklund	From Jct SR 370/Alamos Rd 1.5 mi E	S to end of route	2.009	16	3	Bladed Fair
El Valle Escondido	From Jct SR 456/SR 406 4 mi S	S to end of route	3.677	18	3	Bladed Fair
Elam	From Jct Sand Mesa/Weese Rd 2 mi N	E to end of route	1.997	18	3	Bladed Fair
Ellis	From Des Moines 4.5 mi W on US 87/64 on Bennett Rd	Then N 1 mi				
Emery Rd	From Clayton 1.25 mi S on SR 402	N to end of route	0.991	18	4	Bladed well Maintained
Emery Gap	From Jct SR 456/SR 551 N 3.50 mi on SR 551	W to end of route	0.209	18	4	Bladed well Maintained
Entrania Springs	From Jct SR 402/Robertson Rd 2 mi W	NW to end of route	1.441	18	3	Bladed Fair
Erickson	From Jct SR 402/SR 421 1 mi S on 402	NW to end of route	2.667	18	3	Bladed well Maintained
Esquivel	From Clayton on US 56/412 2 mi E	W to end of route	1.099	18	4	Locked Gate
Farber	From Clayton on US 56/412 Pennington Rd 2 mi S	N to end of route	0.116	18	4	Bladed well Maintained
Feeder	From Jct Oklahoma StateLine/US 56/412	W to end of route	0.577	16	3	Bladed Fair
Floyd	From Jct Kennedy Rd/Wrangler Rd S 2 mi	S to Rinker Rd	1.51	18	3	Bladed Fair
Fliuhman	From Clayton 5 mi W on US 56/412	W to end of route	1	20	4	Maintained
Forrester	From Clayton 4 mi S on SR 402 E 2 mi on Boggs Rd	S to end of route	0.179	18	4	Bladed well Maintained
Furlow	From Jct SR 411/Seneca Valley Rd 1 mi E	SW to Harding County Line and end of county Maintenance	1.255	18	3	Bladed Fair
Gable	From Greenville 0.5 S on SR 453	Then N 1 mi E 4 mi crossing SR 402 to Anderson Rd	5.003	20	3	Bladed well Maintained
Gallegos	From Jct Us 56/412/Pasamonte Rd 13 mi S	S to end of route	0.405	16	4	Bladed well Maintained
Gap	From Jct of Harding County Line/Gap Rd	Loop W then N to US 87/64	27.365	20	3 & 4	Bladed well Maintained
Garcia	From Jct SR 370/Campbell Rd 6 mi W	SW to end of route	2.433	18	3	Bladed Fair
Gard	From Jct US 56/412 SR 120 2.5 mi S	N to end of route	1.025	18	3	Bladed Fair
Gardner	From Jct SR 402/SR 362 3 mi W	W to end of route	1.199	18	3	Bladed Fair
Geary	From Jct of Knowles Rd/Oklahoma Line Hwy N 0.20 mi	S to Wisdom Rd	0.865	18	3	Bladed well Maintained
Gilbert	From Jct Irwin Rd/Sand Mesa Rd 2 mi N	Then N 1.1 mi to end of road	2.011	20	3	Bladed well Maintained
Gladstone	From Jct US 56/Gladstone Rd S	E/N to Campbell Rd intersection	1.1	20	3	Bladed Fair
Gonzales	From Jct of Bluefront Rd/Daves Rd 3 mi N	S to end of County Maintenance	0.997	20	3	Bladed well Maintained
Goodson	From Jct SR 456/SR 402 6 mi W	N/W to Barney Rd	6.19	22	3 & 4	Bladed well Maintained
Goodyear	From Gladstone 2 mi N on Grinde	SW to end of route	5.338	18	3	Bladed Fair
Grande	From Jct US 87/64 Gallegos Rd 1.5 mi	W to end of County Maintenance	1.905	18	3	Bladed Fair
Green	Jct SR 402/Leavitt Rd 2.5 mi W	S to end of route	2.008	20	3	Bladed well Maintained
Grinde	From Gladstone North	S to end of route	0.752	20	4	Bladed well Maintained
Grine	From Jct Miera Rd/Pennington Rd S 1.3 mi	To end of route	0.563	18	4	Bladed well Maintained
		W to end of route	13.244	20	3	Bladed well Maintained
			1.373	18	3	Bladed

UNION COUNTY MAINTAINED ROUTE DESCRIPTION
For Annual Certified County Maintained Mileage Report
Year 2019

Hall	From Amistad 0.5 mi E to Ricketson Rd 0.5 mi S	E to Romero Rd	4,329	20	3	Bladed well Maintained
Hamilton	From Jct. SR 456/SR 370 4 mi S on SR 370	W to end of route	1,234	20	4	Bladed well Maintained
Hardisty	From Jct SR 551/SR 456 15 mi E onto Long Canyon Rd 5 mi	N/W to end of route	1,477	18	3	Bladed Fair
Harris	From Jct SR 406/SR 456 1 mi S	SW to end of route	8,427	20	3	Bladed well Maintained
Hayden	From Jct SR 402/SR 102 6 mi W	N/E to SR 102	11,524	22	4	Bladed well Maintained
Heeler	From Clayton on US 56/412 7 mi E	S to end of route	0,439	18	3	Locked Gate
Heimann	From Jct. SR 102/Hayden Rd 2 mi S	W/N to SR 102	7,204	18	3	Bladed well Maintained
Heringa	From Clayton 3 mi W on US 56/412	N/W to US 87 in Mt. Dora	20,036	22	4	Bladed well Maintained
Hilltop	From Clayton 1 mi on US 56/412	N to Mays Rd	0,305	20	4	Bladed well Maintained
Hindes	From Jct. US 87/64 & Royce Rd 3 mi N	W to end of route	2,171	18	3	Bladed Fair
Hittson	From Grenville US 87/64 4 mi W	N to Severo Rd	5,894	20	4	Bladed well Maintained
Holland	From Jct SR 402/Clapham Rd 5 mi. W	S/W to SR 402	4,099	20 3 & 4	4	Bladed well Maintained
Holman	From Sedan 2 mi E on SR 421	N to Boggs Rd - S to Lobb Rd	6,006	20	4	Bladed well Maintained
Hoosegow	Jct of Sloan Canyon Rd/SR 456 0.25 NW	S to end of route	0,276	18	3	Bladed Fair
Horselake	From Jct SR 102/Harding Co Line	S to Antelope Springs Rd	4,12	20	3	Bladed well Maintained
Horseshoe	From Folsom SE 1.75 mi on SR 325	S/W to end of route	2,586	16	3	Bladed well Maintained
Hurley	From Jct Sr 370/Campbell Rd 2 mi N	N/E to end of route	0,369	16	3	Locked Gate
Ione	From Jct SR 402/SR 420 11 mi W SR 420	S to Quay Co Line	10,115	22 3 & 4	3	Bladed well Maintained
Irwine	From Grenville to Sand Mesa 1 mi E	N to Campbell Rd	2,998	20	3	Bladed well Maintained
Jacobs	From Harding Co Line/Antelope Springs Rd 4 mi E	S to end of route	1,163	18	3	Fair
Jesus Mesa	From Jct SR 370/SR 465 4 mi E	N/W to Spool Rd	6,839	16	3	Fenced Off
Johnson	From Jct Weese Rd/Sand Mesa 2 mi W	S to end of route	1,22	16	3	Bladed Fair
Jinette	E of Des Moines on US 87/64 0.75 mi.	W to end of route	0,466	18	3	Bladed Fair
Jones	From Jct Sr 453/Sofia Rd 10 mi W	N to Gallegos Rd	7,518	20	3	Bladed well Maintained
Jordan	From Clayton US 56/412 8 mi W	S to end of route	2,775	20	4	Bladed well Maintained
Kear	Jct SR 370/Campbell Rd 1 mi N	E to end of route	0,538	20	4	Bladed well Maintained
Kennedy	From Des Moines US 87/64 5 mi W	S to Colfax Co Line	13,459	22	4	Bladed well Maintained
Kimble	From Capulin S	W to end of route	2,329	20	4	Bladed well Maintained
Kiowa	Jct SR 406/Adobe Rd 1 mi N	To Wrangler Rd	2,905	20	4	Bladed well Maintained
Knowles	Jct SR 402/Boggs Rd 3 mi E	E/S to Okla St Line	7,984	22 3 & 4	4	Bladed well Maintained
Koehn	From Jct SR 402/Amistad Rd 5 mi E	N to end of route	0,261	18 3 & 4	4	Bladed Fair
Koger	From Gladstone 2.5 mi S on Grinde Rd	N to end of route	7	22 3 & 4	4	Bladed well Maintained
Krizan	From Jct Reaser Rd/SR 456	S to end of route	2,256	20 3 & 4	4	Bladed well Maintained
Kyea	From Capulin 1 mi S on Kiowa Rd	W to end of route	2,184	20	3	Bladed well Maintained
Larga	From Jct SR 406/Booster Station 1.5 mi E	S to end of route	0,584	16	3	Bladed well Maintained
Lariat	Began in Hayden	S to end of route	0,629	18	3	Bladed well Maintained
Lasso	From Jct SR 453/US 56 3 mi E	Ends thru Hayden	0,636	16	4	Bladed Fair
Latigo	From Jct US 56/Oldfield Rd 1.5 mi E	S to end of route	1,912	16	3	Bladed Fair
Laughter	From Clayton SR 402 5 mi S	S to end of route	3,155	20 3 & 4	4	Bladed well Maintained
Leavitt	From Jct SR 402/SR 417 2 mi E	W to US 56	7,618	22 3 & 4	4	Bladed well Maintained
Lechner	From Jct Proffitt Rd/Perkins Rd .5 mi E	S to Proffitt Rd	4,204	22	4	Bladed well Maintained
Liberty		N to end of route	0,383	22	3	Bladed Fair

UNION COUNTY MAINTAINED ROUTE DESCRIPTION
For Annual Certified County Maintained Mileage Report
Year 2019

Like	From Jct 456/SheepPen Rd 5.5 N W	N to end of route	1.152	16	3	Bladed Fair
Lobb	From Jct SR 421/Lechner Rd 1 mi S	E to State Line	6.094	18	3	Bladed well Maintained
Lonetree	From Clayton 5 Mi E on US 87/64	N to end of route	0.858	16	3	Bladed Fair
Long Canyon	From Jct SR 370/SR 456 6.5 mi W	N to Colorado State Line	10.411	20	3 & 4	Bladed well Maintained
Long Road	From Jct Maverick Rd/SR 370 1 mi W	S to SR 370	1.466	18	3	Bladed well Maintained
Loop	From Mt. Dora Village	Thru Mt. Dora Village	1.329	20	1 & 2	Bladed Fair
Lovato	From Jct SR 562/Bluefront Rd S	S back to meet Bluefront Rd	10.11	20	3 & 4	Bladed well Maintained
Lowry	From Hayden S	To Antelope Springs Rd	1.941	16	3	Bladed Fair
Lurn	From Jct SR 406/SR 410 3 mi N	W to end of route	0.788	16	2	Bladed Fair
Major Creek	From Jct Clapham Rd/Holland Rd 2 mi S	To end of route	0.419	18	3	Bladed well Maintained
Mallison	From Jct SR 72/Miligan Rd N	E to end of route	0.506	16	4	Bladed Fair
Malpie	Jct of Colfax Co Line/Kennedy Rd 1 mi E	SW to Colfax Co Line	2.92	18	3	Bladed Fair
Mandala	From Des Moines 2.5 Mi W on US 87/64	S to end of route	0.96	16	4	Bladed well Maintained
Mansker	From Jct Campsey Rd/Redger Rd 3 mi S	E to State Line	1.018	18	3	Bladed Fair
Marquez	From Jct SeveroRd/Hittson Rd 2 mi E	S to end of route	1.132	18	4	Bladed Fair
Martinez	From Jct US87/64 Severo Rd 2 mi E	S to end of route	0.662	16	3	Bladed Fair
Maverick	From Jct SR 370/Atencio Rd 2 mi N	E to Pacheco Rd	3.214	18	3	Bladed well Maintained
Mays	W from Clayton US 56/412 Edge of Clayton	W to end of route	5.267	20	4	Bladed well Maintained
McKay	From Jct SR 401/Campsey Rd 2 mi	S Then E to Redger Rd	6.252	20	3 & 4	Bladed well Maintained
McNaughten	From Folsom North	N to end of route	2.097	18	3	Bladed Fair
Mesa View	From Clayton US 56/412 1.5 mi E	N to end of route	0.184	16	3 & 4	Bladed Fair
Miera	Jct Pennington Rd/Poling Ln 1 mi W	N to end of route	0.836	16	3	Bladed Fair
Miller	From Jct SR 406/Atencio Rd 5 mi W	N to end of route	1.655	16	4	Bladed well Maintained
Milliken	From Folsom SR 72 3 mi NW	N to end of route	3.527	18	4	Bladed well Maintained
Mock	From SR 406/Alope Rd	E/S to end of route	1.655	16	3	Bladed well Maintained
Mockingbird	From Jct US 56/412/Longhorn Rd 0.5 mi E	S to end of route	1.031	16	2	Bladed Fair
Modrall	From Jct 120/Cerrito Blanco Rd 1.5 mi W	S to end of route	0.499	16	3	Bladed Fair
Mondragon	From Des Moines 2 Mi W on Us 87/64	S to end of route	0.26	16	4	Bladed Fair
Montano	From Jct Barney Rd/Pinabetes Rd 2 mi SW	W to end of route	0.675	16	3	Bladed Fair
Morrow	From Capulin 3 mi N on SR 325	W to end of route	1.288	20	4	Bladed well Maintained
Mountain View	From Clayton 2.5 mi E to S 0.25 mi on Prairie View Rd	Jct US 56/412/Prairie View Rd	0.922	22	2	Bladed well Maintained
Musick	From Jct US 56/412 Rawhide Rd 0.5 mi S	EW to Dr Michael Jenkins Rd	0.116	16	3	Bladed Fair
Newlon	From Jct SR 402/Boggs Rd E 7 mi	W to end of route	5.019	22	4	Bladed well Maintained
Nikkel	From Jct SR 402/Furlow Rd 1 mi W	S to SR 421	1.002	18	3	Bladed well Maintained
Nile E	From Jct SR 402/Amistad Hwy 0.30 mi S	S to Boggs Rd	4.986	20	4	Bladed well Maintained
Nye	In Mt. Dora, NM	W to Hayden Rd Rd	0.126	18	4	Bladed well Maintained
Oak Canyon	From Jct SR 456/SR 551 1 mi S	Thru Mt. Dora, NM	2.078	18	3	Bladed well Maintained
Old Baker	From Jct Barney Rd/Daves Rd 2 mi S	W to end of route	0.615	18	3	Bladed well Maintained
Oldfield	From Clayton 7.5 mi W on US 56/412	W to end of route	2.298	18	4	Bladed well Maintained
Oliver	From Jct SR 406/US 56 N	S to end of route	6.957	22	4	Bladed well Maintained
O'Neal	From Jct SR 562/Lovato Rd 1.5 S	E to Okla State Line	5.204	18	4	Bladed well Maintained
Outfitters	From Jct Kennedy Rd/Wrangler Rd S 1 mi	SW back to Lovato Rd	0.418	16	4	Bladed Fair

UNION COUNTY MAINTAINED ROUTE DESCRIPTION
For Annual Certified County Maintained Mileage Report
Year 2019

Location	Route Description	Mileage	Notes	Count	Maintenance Status
Pacheco	Jct SR 370/Atencio Rd 3 mi E	16.527	N/W back to SR 370	18 3 & 4	Bladed well Maintained
Pachta	From Jct US 87/64/Weatherly Rd 3 mi E	1.01	N to end of route	16	3 Bladed Fair
Parman	From Jct SR 401/Robertson Rd 2 mi W	1.084	1 mi S to end of route	16	3 Bladed Fair
Pasamonte	Jct Pasamonte Rd/US 56/SR 412 S	16.764	To Harding Co Line	22 3 & 4	Bladed well Maintained
Pennington	From Jct SR 453 US 56/412 1 mi E	21.059	S to Bluefront Rd	20	4 Bladed well Maintained
Perfco Creek	From Mt Dora 2 mi S on Heringa Rd	7.945	E/S back to Heringa Rd	20	4 Bladed well Maintained
Perkins	1 mi E of Sedan	4.012	S to Proffitt Rd	20	4 Bladed well Maintained
Perschbacher	From Jct SR 402/SR 102 2 mi N	4.981	W/S to Bueyeros Hwy	18	3 Bladed well Maintained
Piacere	3 mi E from Clayton on US 56/64	0.205	N to end of route	16	3 Bladed well Maintained
Pinabetes	From Jct Barney Rd/Daves Rd 2 mi W	1.558	NW to end of route	16	3 Bladed well Maintained
Pipas	From Jct State Line Hwy/Sedan Hwy	4.10	S 4.10 miles	22	3 Bladed Fair
Plainview	From Jct SR 402/SR 562	9.069	E to State Line	18 3 & 4	3 Bladed Fair
Podzemny	From Jct Callis Rd/Boggs Rd 1 mi S	0.796	E to end of route	18	2 Bladed well Maintained
Pogue	From Clayton US 56/412 6.5 mi W	1.246	S to end of route	20	4 Bladed well Maintained
Potter	From Jct SR 406/Sayre Rd 0.25 mi N	0.546	E to end of route	18	3 Bladed well Maintained
Prairie View	From Clayton 2 mi E on US/56	0.263	S to Mountain View Rd intersection	22	2 Bladed well Maintained
Prairie Dale	From Jct Corruppa Rd/Campbell Rd 2 mi E	2.022	2 mi N Back to Corruppa Rd	20	4 Bladed well Maintained
Price	From Jct SR 370/Alamos Rd 1 mi W	0.277	N to End of Route	16	4 Bladed well Maintained
Proffitt	From Jct SR 421/Leciner Rd 4 mi S	6.097	E to State Line/Richardson Rd	20	3 Bladed well Maintained
Proughom	From Clayton 5 mi N on US 87/64	2.124	S to Mays Rd	20	4 Bladed well Maintained
Pyor	8 mi E on Weatherly Rd	2.093	S to end of route	20	4 Bladed well Maintained
Puckett	From Jct US 56/412/Rawhide Rd	0.183	S 1.50 mi on Rawhide W to end of route	16	3 Bladed well Maintained
Purvine	From Des Moines 1.5 mi N on SR 325	4.19	N to end of route	18	3 Bladed well Maintained
Quimby	From Jct SR 406/Sr 456 4 mi NW	1.317	NE to end of route	16	3 Bladed Fair
Rabbit Ear	From Clayton 2.5 mi E on US 56/412	0.153	N to end of route	22	4 Bladed well Maintained
Rafter 33	From Clayton US 87/64 3 mi S	2.434	SE to end of route	16	3 Bladed Fair
Rainbow	From Jct SR72/Milliken Rd 0.51 W	0.43	S to end of route	16	3 Bladed Fair
Ranch	From Jct US 87/Weatherly Rd 1.2 mi E	0.445	S to end of route	16	3 Fair
Rawhide	From Jct US 56/412/ SR 406 2 mi E	1.604	S to end of route	22	4 Bladed well Maintained
Redger	From Jct SR 406/Campsey Rd 7 mi E	4.251	S to Plainview Rd	20 3 & 4	Bladed well Maintained
Reed	From Village of Mt Dora	0.242	Tnu Village of Mt. Dora	18	4 Bladed well Maintained
Reeser	From Jct SR 562/SR 406 7 mi W	3.784	W to end of route	18	3 Bladed Fair
Rhoton	From Jct SR 406/Campsey Rd 5 mi E	4.39	S to Plainview rd	18 3 & 4	Bladed Fair
Riata	From Capulin .75 mi E	0.477	N to end of route	16	3 Bladed Fair
Richardson	From Jct Proffitt Rd/Speer Rd 2 mi E to State Liline	1.591	S to end of route	18	3 Bladed Fair
Ricketson	From Jct SR 406/Tompkins Rd 3 mi E	8.762	N to Speer Rd, S to Koger Rd	22	4 Bladed well Maintained
Ridge	From Des Moines Village Limit N	27.14	To SR 370	20	4 Bladed well Maintained
Rife	From Des Moines US 87/64 .24 mi W	0.382	N to end of route	16	4 Bladed well Maintained
Ringbone	From Jct US 56/412 Wiley 1.25 Mi W	5.389	S to end of route	18	4 Bladed well Maintained
Rinker	From Jct US 87/64/Mockingbird Rd 0.35 mi. NE	2.179	E to Feeder Rd	20	3 Bladed well Maintained
Riley	From Clayton 20 mi W on US 56	0.354	N to end of route	18	2 Bladed well Maintained
Robertson	From Jct SR 402/Bolz Rd	8.976	W to lone Rd	20	4 Bladed well Maintained
Robinette	From Jct Browder Rd/Clapham Rd	3.855	W to end of route	16	3 Bladed well Maintained

UNION COUNTY MAINTAINED ROUTE DESCRIPTION
For Annual Certified County Maintained Mileage Report
Year 2019

Rockledge	From Clayton US 87/64 3 mi NW	N to end of route	1.479	16	3	Bladed Fair
Rodeo	From Clayton US 56/412 1.5 E	N to end of route	0.127	16	4	Bladed Fair
Romero	From Jct Ricketson Rd/Koger Rd 4 mi E	S to Centerville Hwy	10.739	20	3	Bladed Fair
Roney	From Gladstone 2 mi S on Gladstone Rd	E/S/E to Yates Hwy	8.808	20	3 & 4	Bladed well Maintained
Royce	From Jct US 87/64/Pronghorn Rd 2 mi NW	N to Campbell Rd	15.061	22	3 & 4	Bladed well Maintained
Russell	From Jct SR 402/SR 562 5 mi W	N to end of route	0.543	16	3	Bladed well Maintained
Saddle Mountain	From Jct SR 406/US 56/412 1.25 mi N	E to US 56/412	3.16	22	4	Bladed well Maintained
Sand Creek	From Jct Irwin Rd/Campbell Rd 1 mi W	W to end of route	0.996	16	3	Bladed well Maintained
Sand Draw	From Clayton 6.5 mi S on SR 402	W to end of route	2.167	20	4	Bladed well Maintained
Sand Mesa	From Greenville N	E to Weesee Rd	7.236	22	3	Bladed well Maintained
Sayre	From Jct SR 406/El Valle Escondido Rd 1.75 N	NW to end of route	1.876	20	4	Bladed well Maintained
Scharfer	From Jct SR 456/Black Mesa Rd 0.5 NW	N to end of route	0.85	16	2	Locked Gate
Scott	From Jct Proffitt Rd/Cowan Rd 2 mi South	W to end of route	3.318	16	3	Bladed Fair
Seaton	From Des Moines 3 mi N on SR 325	E to Purvines Road	1.012	16	3	Bladed Fair
Sedan Cemetery	From Jct SR 424/Callis Rd 1 mi N	W to end of route	0.61	16	3	Bladed Fair
Seneca	From Seneca 1 mi S	E to Knowles Rd	5.226	20	4	Bladed well Maintained
Seneca Valley	From Ok St Line 2 mi W	US 56/412	8.787	18	4	Bladed well Maintained
Severo	From Jct US 87/64 Grande Rd 1 mi N	WN to Weatherly Rd	11.293	20	3 & 4	Bladed well Maintained
Sheep Pen	From Jct Sr 456/Like Rd 2 mi NW	N to end of route	6.599	18	3	Bladed well Maintained
Shugart	From Gladstone South 1.5 mi	W to end of route	0.507	16	3	Bladed well Maintained
Sierra	From Jct US 87/64/Kennedy Rd 2.5 mi S	E to end of route	0.332	16	3	Fair
Sierra Grande	Around Sierra Grande Restaurant	Around Sierra Grande Restaurant				
	In Des Moines US 87/64	In Des Moines US 87/64	0.127			Not Bladed
Six R	From Jct SR 370/Pacheco Rd 4 mi E	N to end of route	0.841	16	3	Bladed Fair
Sloan Canyon	From Jct SR 466/Goodson Rd 2 mi NW	SW to Pacheco Rd	18.24	18	3 & 4	Bladed Fair
Smith	From Jct Weatherly Rd/Waterhole Rd 4 mi E	NW to end of route	0.823	16	3	Bladed Fair
Snyder	From Jct SR 459/Sofia Rd 4 mi S	E to end of route	2.737	20	4	Bladed well Maintained
Sofia	From Mt. Dora W	To Colfax Co Line	30.897	18	3	Bladed well Maintained
Soggy	From Amistad Rd to Hall Rd 2 mi E	S and E to State Line	4.764	22	3	Bladed well Maintained
South Fork	From Jct of SR 370/Weatherly Rd 1.40 mi W	S/E to end of route	5.53	18	3	Bladed Fair
Sowers	From Jct SR 452/Kyaa Rd 0.5 mi S	W to end of route	0.213	18	3	Bladed Fair
Speer	From Jct Perkins Rd/Proffitt Rd 1 mi E	S to Ricketson Rd	5.892	16	4	Driveway
Spool	From Jct Sr 370/SR 456 1 mi W	N to end of route	6.257	22	4	Bladed well Maintained
Springhill	From Jct Weatherly Rd/Pachta Rd 3 mi E	Loop Thru Ranch	0.59	18	3	Bladed well Maintained
Spur	From Jct SR 456/SR 406 0.75 mi E	N/E to end of route	0.72	16	3	Driveway
Stead	From Jct SR 402/Ricketson Rd 1.5 mi S	W to end of route				
	Both EW	E to Callis Rd	7.851	22	4	Bladed well Maintained
Stevenson	From Jct SR 102/Hayden Rd 1.75 mi S	W to end of route	0.835	18	4	Bladed well Maintained
Stirrup	From Jct SR 406/Saddle Mountain Rd 2 mi E	N to Booster Station Highway	2.908	18	3	Bladed well Maintained
Stone	From Jct Soggy Rd/Romero Rd 3.5 mi	W to end of route	0.993	18	4	Driveway/Private Dr
Stonehaven	From Jct SR 402/Nile E Rd 3 mi W	S to end of route	1.858	18	3	Fair
Stumpler	From Jct SR 456/Hoosegow.25 Mi. NW	E to end of route	0.864	16	3	Gate Closed
Swagerty	From Jct US 56/412/Wiley 2 mi NW	N to Heringa Rd	2.013	20	3	Bladed well Maintained

UNION COUNTY MAINTAINED ROUTE DESCRIPTION
For Annual Certified County Maintained Mileage Report
Year 2019

Teepee	At edge of City Limits	N to end of route	0.269	20	4	Driveway
Telstar Canyon	From Jct US 56/64/Grinde Rd at Gladstone N to Sofia Rd then E	E to end of route	0.199	16	3	Bladed well Maintained
Thomason	From Jct US 56/412/Barnes Rd 5.25 mi S	E to end of route	0.528	16	3	Fair
Tompkins	From Jct Speer Rd/Rickerson Rd E 0.25 mi crossing SR 402	W to Hayden Rd intersection to 2 mi 1 mi S 2 mi E to SR 402	10.283	18	3	Bladed well Maintained
Toney	From Jct SR 402/Campese Rd 2 mi S	N to end of route	5.023	22	4	Bladed well Maintained
Travacere	From Jct Ridge Rd/Brown Rd 3 mi W	N to end of route	1.077	18	3	Bladed Fair
Tunk	From Jct Gallegos Rd/Jones Rd 2 mi W	N to end of route	1.33	18	3	Bladed Fair
Vandiver	From Jct Clapham Rd/SR 402 1 mi S	E to State Line	8.096	18	3	Bladed well Maintained
Vaquero	From Jct SR 370/Alamos Rd 2 mi W/N	W to end of route	1.582	20	4	Bladed well Maintained
Visalia	From Polson 6 mi on SR 456	E to end of route	0.259			Not Bladed
Wagner	From Jct SR 456/SR 406 5 mi NW	S to end of route	1.28			Not Bladed
Walker	From Jct SR 562/Craft Rd 1 mi E	N to Wisdom Rd	0.99	18	3	Bladed well Maintained
Waterflore	From Jct US 64/87/Weatherly Rd 10.2 mi E	N to Wilkerson Rd	3.011	18	3	Bladed well Maintained
Watters	SR 370 8.5 mi N	W to end of route	0.826	18	4	Not Bladed
WCHA	From Jct Romero Rd/Soggy Rd	S 1.5 miles	0.593	22	3	Bladed Fair
Weatherly	From Des Moines 3 mi S on US 64/87	E to SR 370	23.754	22	3	Bladed Fair
Weese	From Jct US 64/87 at Mt Dora N	N to end of route	10.975	22	4	Bladed well Maintained
White Rock	From Jct SR 370/Maverick Rd 2 Mi W	N to Pacheco Rd	1.218	18	4	Bladed well Maintained
Whitley	Begin in Oka NE Corner of NM on T32N-37E	Into NM W to end of route	11.656			Colorado takes care of this road
Wid	Jct Hayden Rd/Helmann Rd 1 mi W	N 1 mi to end of route	0.571	16	3	Fair
Wiggins	From Jct SR 406/SR 456	N to end of route	2.842	18	3	Bladed well Maintained
Wiley	From Jct US 56/SR 412 Ringbone Rd 1 mi NE	NW to Cedar Creek Rd	9.019	18	3	Bladed Fair
Wilkerson	From Jct Des Moines/Ridge Rd 9 mi E	E/NE to end of route	7.629	18	3	Bladed well Maintained
Williett	From Jct SR 370/Ridge Rd 3 mi N	E to end of route	0.365	18	4	Bladed Fair
Wisdom	From Jct SR 562/Gardner Rd 1 mi S	W back to SR 562	4.239	18	3	Bladed well Maintained
Wiseman	From Jct Sand Mesa Rd/Johnson Rd	N/E to Weese Rd.	3.011	18	3	Bladed well Maintained
Witt	From Jct Alencio Rd/Miller Rd .50 mi W	S to end of route	1.469	16	4	Bladed well Maintained
Wragler	From Jct US 87/64/Kennedy Rd 3 mi S	W to County Line Rd	4.028	20	4	Bladed well Maintained
Zurick	From SR 402/Steard Rd 1 mi W	S to end of route	5.768	20	3	Bladed well Maintained
Capulin Ave	N/S in Capulin	N/S in Capulin	0.21	18	4	Bladed Well Maintained
Commercial Ave	N/S in Capulin	N/S in Capulin	0.281	18	4	Bladed Well Maintained
Fifth Street	EW in Capulin	EW in Capulin	0.255	18	4	Bladed Well Maintained
Fourth Street	EW in Capulin	EW in Capulin	0.285	18	4	Bladed Well Maintained
N Cedar	N/S in Capulin	N/S in Capulin	0.03	18	4	Bladed Well Maintained
N Santa Fe	N/S in Capulin	N/S in Capulin	0.082	18	4	Bladed Well Maintained
Pinon	N/S in Capulin	N/S in Capulin	0.192	18	4	Bladed Well Maintained
S. Cedar	N/S in Capulin	N/S in Capulin	0.217	18	4	Bladed Well Maintained
S Santa Fe Ave	N/S in Capulin	N/S in Capulin	0.215	18	4	Bladed Well Maintained
Second Street	EW in Capulin	EW in Capulin	0.433	18	4	Bladed Well Maintained
Third Street	EW in Capulin	EW in Capulin	0.362	18	4	Bladed Well Maintained
Velma	N/S in Capulin	N/S in Capulin	0.214	18	4	Bladed Well Maintained

UNION COUNTY MAINTAINED ROUTE DESCRIPTION
 For Annual Certified County Maintained Mileage Report
 Year 2019

Burlington	EW/ in Grenville	EW/ in Grenville	0.394	18	4 Bladed Well Maintained
College	EW/ in Grenville	EW/ in Grenville	0.299	18	4 Bladed Well Maintained
Denver	EW/ in Grenville	EW/ in Grenville	0.095	18	4 Bladed Well Maintained
Fifth Ave	N/S in Grenville	N/S in Grenville	0.146	18	4 Bladed Well Maintained
First Ave	N/S in Grenville	N/S in Grenville	0.411	18	4 Bladed Well Maintained
Light Street	EW/ in Grenville	EW/ in Grenville	0.329	18	4 Bladed Well Maintained
Main Street	EW/ in Grenville	EW/ in Grenville	0.321	18	4 Bladed Well Maintained
Raton Street	EW/ in Grenville	EW/ in Grenville	0.074	18	4 Bladed Well Maintained
Second Street	N/S in Grenville	N/S in Grenville	0.33	18	4 Bladed Well Maintained
			1188.99		

UNION COUNTY
RESOLUTION #107-22
A RESOLUTION SUPPORTING THE
DESIGNATION OF AN EXTENSION OF INTERSTATE 27
AS A FUTURE INTERSTATE IN TEXAS.

WHEREAS, Congress has already designated the Ports-to-Plains Corridor in Texas as a High Priority Corridor on the National Highway System; and

WHEREAS, the Texas Department of Transportation published an *Initial Assessment Report on the Extension of I-27/Ports to Plains Corridor* in November, 2015 which stated: "The corridor will continue to be a critical link to state, national and international trade, growing population centers and critical energy and agricultural business sectors"; and

WHEREAS, according to the *Texas Freight Mobility Plan*, "By 2040 over 73 percent of Texas' population and 82 percent of the state's employment is projected to be located within five miles of an interstate"; and

WHEREAS, Texas has no major north-south interstate west of Interstate 35; and

WHEREAS, the *Texas Freight Mobility Plan* notes that further investment alone on I-35 will not fix the problem saying, "The state must focus not only on improving existing facilities, but also on developing future freight corridors to move products to markets and exports"; and

WHEREAS, the *Texas Freight Mobility Plan* goes on to recommend that TxDOT, "give additional consideration to the extension or designation of other interstate routes. Examples include I-27 and upgrades to portions of US Highway 190 to interstate standards"; and

WHEREAS, the proposed extension of Interstate 27 connects major West Texas population and economic centers including Amarillo, Lubbock, Midland-Odessa and San Angelo in addition to numerous smaller communities; and

WHEREAS, the proposed extension of Interstate 27 intersects with Interstate 40, Interstate 20 and Interstate 10; and

WHEREAS, the proposed extension of Interstate 27 will serve three border crossings with Mexico at Laredo, Eagle Pass and Del Rio; and

WHEREAS, the proposed extension of Interstate 27 will be a major backbone for the energy industry in Texas serving top oil and gas producing counties as well as the growing wind energy industry; and

WHEREAS, the proposed extension of Interstate 27 will also serve the agriculture industry including many of Texas top counties for the production of cotton, cattle, sheep and goats and other commodities; and

WHEREAS, extending Interstate 27 in Texas is also a cost-effective option. The Texas Department of Transportation's *Initial Assessment Report on the Extension of I-27/Ports to Plains Corridor* estimated that it would cost about \$7 billion to upgrade the nearly 1,000 miles of the Ports-to-Plains Corridor from the northern tip of Texas to Laredo. To extend Interstate-27 approximately 500 miles from Lubbock to Laredo is projected to cost \$5.2 billion. Compare that to the \$4.8 billion it cost to rebuild 28 mile section of Interstate 35 east from Interstate 635 to U.S. Highway 380 in Dallas County; and

WHEREAS, an additional cost saving option is associated with the primarily east-west, recently designated, Interstate 14 which includes a proposed segment that overlaps the Ports-to-Plains Corridor between Midland-Odessa and San Angelo, presenting an opportunity for that segment to be jointly designated as Interstate 14 and Interstate 27; and

WHEREAS, a future Interstate designation will be a significant new economic development tool for communities along the corridor. Site selectors for manufacturers, warehousing and distribution recommend sites along an interstate highway and travel services businesses such as hotels, truck stops, convenience stores and restaurants, which can have a dramatic impact on small communities will also expand. This will create much needed new jobs and expanded tax base in rural West Texas; and

WHEREAS, while designation as a future interstate is the first step in a very long process before the completion of an interstate highway, that does not lessen the importance of extending Interstate 27.

NOW THEREFORE, BE IT RESOLVED BY THE BOARD OF UNION COUNTY COMMISSIONERS;

Section 1. That the COUNTY OF UNION supports the designation of the extension of Interstate 27 as a Future Interstate by Congress and urges the Texas Department of Transportation to support such designation.

Section 2. This resolution to be in full force and effect from and after its passage and approval.

Section 3. If any portion or provision of this resolution shall for any reason be held to be invalid or unenforceable, the invalidity or unenforceability of such portion or provision shall not affect any of the remaining provisions of this Resolution, the intention being that the same are severable.

ADOPTED AND APPROVED this 12TH day of MARCH, 2019.

Justin Bennett, Commission Chair

(S E A L)

ATTEST

Mary Lou Harkins, County Clerk

LNVC#	Name	Description	Line Item	PO#	Amount
KDK02061901	AAA FIREPRO OF NEW MEXICO INC	INV#KDK02061901 BOOTS/HOOD/CASE	410532081	26578	994.00
994.00	TOT\$				
994.00	PAID				
994.00	BAL				
224 SCHEPPS BLVD					
CLOVIS NM 88101					
3142019	ADRIANO MAXNES	ALBUQUERQUE LEA PSYCH EVAL 80%	401082010	26612	88.80
88.80	TOT\$				
88.80	PAID				
88.80	BAL				
19 PUCKETT RD					
CLAYTON NM 88415					
3152019	ADRIANO MAXNES	ALBUQUERQUE LEA PSYCH EVAL 20%	401082010	26612	22.20
22.20	TOT\$				
22.20	PAID				
22.20	BAL				
19 PUCKETT RD					
CLAYTON NM 88415					
314308	AEG PETROLEUM	INV#314308 FUEL	408452076	26571	2316.90
2316.90	TOT\$				
2316.90	PAID				
2316.90	BAL				
PO BOX 1003					
AMARILLO TX 79105					
9959749355	AIRGAS USA	INV#9959749355 CYLINDER LEASE	402252076	26591	102.18
102.18	TOT\$				
102.18	PAID				
102.18	BAL				
PO BOX 676015					
DALLAS TX 75267 6015					
3000639618	AMERIPRIDE SERVICES INC.	INV#3000639618 MONTHLY RUG SVC	401032046	26172	129.76
129.76	TOT\$				
129.76	PAID				
129.76	BAL				
P.O. BOX 280					
BEMIDJI MN 56619 0280					
MARCH2019	BACA VALLEY TELEPHONE CO.	GRENVILLE FD PHONE//NOC #507	411572076		140.19
933.21	TOT\$	CAPULIN FD PHONE//NOC #122	407412076		157.54
933.21	PAID	FOLSOM EMS NOC	414662076		75.00
933.21	BAL	SUBSTATION #5184	401082007		69.23
		SUBSTATION #5184	401102007		69.22
		SEDAN FD LINE FILTER #4777	408452076		62.77
		LONG CANYON NOC SVC #4496	415682076		50.00
		PANIC BUTTON #1966	401032025		32.31
		TOWER LEASE #2159	415682076		260.84
		EMAIL HOSTING #2159	401032025		16.11
19-C36804	BENNETTS LLC	INV#19-C36804 CYLINDER RENTAL	414672076	26198	21.65
21.65	TOT\$				
21.65	PAID				
21.65	BAL				
P.O. BOX 27					
RATON NM 87740					
921	BOBBY EMERY WELDING	INV#921 CATTLE GUARD	402252080	26605	1773.30
1773.30	TOT\$				
1773.30	PAID				
1773.30	BAL				
PO BOX 1					
CLAYTON NM 88415					
83119772	BOUND TREE MEDICAL, LLC	INV#83119772 OINTMENT	414662076	26439	27.66
27.66	TOT\$				
27.66	PAID				
27.66	BAL				
23537 NETWORK PLACE					
CHICAGO IL 60673 1235					
87808	BRADLEY SUPPLY	INV#87808 SUPPLIES	410532076	26258	76.91
76.91	TOT\$				
76.91	PAID				
76.91	BAL				

INVC#	Name	Description	Line Item	PO#	Amount
126517	CITY DRUG	INV#126517	406372096	26411	21.00
21.00	TOT\$				
PAID	7 MAIN STREET				
BAL	CLAYTON NM 88415				

126622	CITY DRUG	INV#126622	406372096	26579	104.50
104.50	TOT\$				
PAID	7 MAIN STREET				
BAL	CLAYTON NM 88415				

126691	CITY DRUG	INV#126691	406372096	26579	40.00
40.00	TOT\$				
PAID	7 MAIN STREET				
BAL	CLAYTON NM 88415				

126698	CITY DRUG	INV#126698	406372096	26579	16.00
16.00	TOT\$				
PAID	7 MAIN STREET				
BAL	CLAYTON NM 88415				

126840	CITY DRUG	INV#126840	406372096	26579	16.00
16.00	TOT\$				
PAID	7 MAIN STREET				
BAL	CLAYTON NM 88415				

126883	CITY DRUG	INV#126883	406372096	26579	5.00
5.00	TOT\$				
PAID	7 MAIN STREET				
BAL	CLAYTON NM 88415				

MARCH2019	CITY DRUG	PHARMACY CONSULT FOLSOM EMS	414672076		1000.00
1000.00	TOT\$				
PAID	7 MAIN STREET				
BAL	CLAYTON NM 88415				

2272019	CLAYTON KIESLING	NERTPO TRAVEL MORA 100%	401012010	26521	212.68
212.68	TOT\$				
PAID	41 JENNY LANE				
BAL	GRENVILLE NM 88424				

2152019	CLAYTON KIESLING	COUNTY DAY AT THE ROUNDHOUSE	401012010	26521	260.24
260.24	TOT\$				
PAID	41 JENNY LANE				
BAL	GRENVILLE NM 88424				

21519	CLINT D HARDEN & ASSOCIATES	INV#021519 LOBBY SERVICES	401012101	26221	1078.75
1078.75	TOT\$				
PAID	1348 CR H				
BAL	CLOVIS NM 88101				

42067	DALHART R&R MACHINE WORKS, INC.	INV#42067 LABOR HYDRAULIC FITTING	402252012	26581	160.00
160.00	TOT\$				
PAID	P.O. BOX 1330				
BAL	DALHART TX 79022				

SZ01201.006	E.N.M.R. TELEPHONE CO.	INV#406SZ01201.006 T-1 LINE	500812112	26115	378.81
378.81	TOT\$				
PAID	CAPS BILLING				
BAL	P.O. BOX 1450				

LINE	ITEM	DESCRIPTION	AMOUNT	FO#
378.81	BAL	CLOVIS NM 88102 1450		
93592256	TOT\$	E.S.R.I.	1500.00	
1500.00	PAID	FILE 54630		26595
1500.00	BAL	LOS ANGELES CA 90074 4630	1500.00	
494.40	TOT\$	EASTERN NM EMS CORPORATION		
494.40	PAID	P.O. BOX 1895		26590
494.40	BAL	CLOVIS NM 88102	494.40	
472591-00	TOT\$	FORESTRY SUPPLIERS, INC.		
913.45	PAID	INV#472591-00 BURN KIT/SHELTERS	643.95	26535
913.45	BAL	PO BOX 8397	269.50	26535
JACKSON MS 39284 8397		INV#472591-00 MYTI-FLO HOSE		
178190104	TOT\$	GEO CORRECTIONS HOLDINGS, INC.	7815.80	26132
7815.80	PAID	P.O. BOX 744547		
7815.80	BAL	ATLANTA GA 30374 4547	7815.80	
1579.09	TOT\$	HARRIS WELDING & CONSTRUCTION		
1579.09	PAID	INV#1907 REPAIRS TO STORAGE TANK	1579.09	26593
1579.09	BAL	P.O. BOX 568		
1579.09	BAL	HARTLEY TX 79044	1579.09	
2122019	TOT\$	HAWKINS, DELAFIELD & WOOD LLP		
3673.10	PAID	7 WORLD TRADE CENTER	3673.10	26580
3673.10	BAL	250 GREENWICH ST.		
3673.10	BAL	NEW YORK NY 10007 2442	3673.10	
FY19 QTR3	TOT\$	HUMAN SERVICES DEPARTMENT		
22236.10	PAID	ACCOUNTS RECEIVABLE BUREAU	22236.10	26352
22236.10	BAL	P.O. BOX 2348		
22236.10	BAL	SANTA FE NM 87504 2348	22236.10	
FY19 QTR3	TOT\$	HUMAN SERVICES DEPARTMENT		
16677.07	PAID	ACCOUNTS RECEIVABLE BUREAU	16677.07	26297
16677.07	BAL	P.O. BOX 2348		
16677.07	BAL	SANTA FE NM 87504 2348	16677.07	
2282019	TOT\$	JAMES LOBB		
8.30	PAID	REIMBURSEMENT ON FINGERPRINT	8.30	26609
8.30	BAL	REGISTRATION		26609
8.30	BAL	CLAYTON NM 88415	8.30	
1298	TOT\$	JUAN'S WINDSHIELD MOBILE SERVICE		
220.00	PAID	INV#1298 WINDSHIELD REPAIR	220.00	26604
220.00	BAL	P.O. BOX 1114		
220.00	BAL	DALHART TX 79022	220.00	
15023-74830	TOT\$	LOGAN HOME AND AUTO CENTER		
163.84	PAID	INV#15023-74830 OIL/FILTER/PARTS	163.84	26540
163.84	BAL	P.O. BOX 31		
163.84	BAL	LOGAN NM 88426	163.84	
1022	TOT\$	M & H ENTERPRISES		
1022	PAID	INV#1022 MOUNT/WIRE LED LIGHTS	783.75	26607
1022	BAL	408452012	783.75	

INVOICE#	NAME	Description	Line Item	PO#	Amount
783.75	TOT\$				
783.75	PAID	12815 MCADAMS ROAD			
	BAL	DALHART TX 79022			
1925.00	TOT\$				1925.00
	PAID	M & H ENTERPRISES	INV#1021 WORK ON FIRE TRUCK	26607	
	BAL		408452012		
1925.00	TOT\$				
	PAID	12815 MCADAMS ROAD			
	BAL	DALHART TX 79022			
111.05	TOT\$				111.05
	PAID	MAYFIELD PAPER COMPANY	INV#2473774 TISSUE/PAPER TOWELS	26592	
	BAL		401032046		
111.05	TOT\$				
	PAID	BOX 3889			
	BAL	SAN ANGELO TX 76902			
188.16	TOT\$				188.16
	PAID	MAYFIELD PAPER COMPANY	INV#2466497 JANITOR SUPPLIES	26592	
	BAL		401032046		
188.16	TOT\$				
	PAID	BOX 3889			
	BAL	SAN ANGELO TX 76902			
35.50	TOT\$				35.50
	PAID	MAYFIELD PAPER COMPANY	INV#2474110 DUSTER REFILL	26592	
	BAL		401032046		
35.50	TOT\$				
	PAID	BOX 3889			
	BAL	SAN ANGELO TX 76902			
9220-55993	TOT\$				29.99
	PAID	MC CLURES BIG J PARTS	INV#9220-55993 MAINTAINER DOE	26453	
	BAL		408452012		
29.99	TOT\$				
	PAID	P.O. BOX 94			
	BAL	CLAYTON NM 88415			
9220-56027	TOT\$				160.00
	PAID	MC CLURES BIG J PARTS	INV#9220-56027 95PC TOOL SET	26453	
	BAL		409492012		
160.00	TOT\$				
	PAID	P.O. BOX 94			
	BAL	CLAYTON NM 88415			
9220-56061	TOT\$				1109.06
	PAID	MC CLURES BIG J PARTS	INV#9220-56061 REPAIRS	410532012	
	BAL				
1109.06	TOT\$				
	PAID	P.O. BOX 94			
	BAL	CLAYTON NM 88415			
9220-55967	TOT\$				56.95
	PAID	MC CLURES BIG J PARTS	INV#9220-55967 OIL/FILTERS	26453	
	BAL		402252076		
56.95	TOT\$				
	PAID	P.O. BOX 94			
	BAL	CLAYTON NM 88415			
9220-56028	TOT\$				14.49
	PAID	MC CLURES BIG J PARTS	INV#9220-56028 SNAP RING PLIERS	402252076	
	BAL				
14.49	TOT\$				
	PAID	P.O. BOX 94			
	BAL	CLAYTON NM 88415			
9220-56186	TOT\$				86.56
	PAID	MC CLURES BIG J PARTS	INV#9220-56186 SPIDER BUNGEE	402252076	
	BAL				
86.56	TOT\$				
	PAID	P.O. BOX 94			
	BAL	CLAYTON NM 88415			
9220-56303	TOT\$				59.88
	PAID	MC CLURES BIG J PARTS	INV#9220-56303 OIL	402252076	
	BAL				
59.88	TOT\$				
	PAID	P.O. BOX 94			
	BAL	CLAYTON NM 88415			

DATE	DESCRIPTION	AMOUNT
9220-56332	MC CLURES BIG J PARTS	
109.90	TOT\$	109.90
	PAID	
109.90	P.O. BOX 94	
	CLAYTON NM 88415	
9220-56338	MC CLURES BIG J PARTS	
22.99	TOT\$	22.99
	PAID	
22.99	P.O. BOX 94	
	CLAYTON NM 88415	
9220-56355	MC CLURES BIG J PARTS	
6.49	TOT\$	6.49
	PAID	
6.49	P.O. BOX 94	
	CLAYTON NM 88415	
9220-56360	MC CLURES BIG J PARTS	
23.99	TOT\$	23.99
	PAID	
23.99	P.O. BOX 94	
	CLAYTON NM 88415	
PS1112074	MEDLEY MATERIAL HANDLING CO.	
159.64	TOT\$	159.64
	PAID	
159.64	P.O. BOX 258881	
	OKLAHOMA CITY OK 73125 8881	
100	MICHELLE N. CALLIS	
204.00	TOT\$	204.00
	PAID	
204.00	27 MAYS RD	
	CLAYTON NM 88415	
3832	MTC LLC	
17.00	TOT\$	17.00
	PAID	
17.00	620 OAK STREET	
	CLAYTON NM 88415	
3792	MTC LLC	
32.50	TOT\$	32.50
	PAID	
32.50	620 OAK STREET	
	CLAYTON NM 88415	
84020	NAPA AUTO PARTS	
471.95	TOT\$	471.95
	PAID	
471.95	MAIN STREET AUTO PARTS	
	112 MAIN ST	
	CLAYTON NM 88415	
84153	NAPA AUTO PARTS	
11.99	TOT\$	11.99
	PAID	
11.99	MAIN STREET AUTO PARTS	
	112 MAIN ST	
	CLAYTON NM 88415	
84187	NAPA AUTO PARTS	
7.98	TOT\$	7.98
	PAID	
7.98	MAIN STREET AUTO PARTS	
	112 MAIN ST	
	CLAYTON NM 88415	
84766	NAPA AUTO PARTS	
7.49	TOT\$	7.49
	PAID	
7.49	MAIN STREET AUTO PARTS	
	112 MAIN ST	
INV#9220-56332	FILTER/BRK PAD	402252076
INV#9220-56338	AIR FILTER	402252076
INV#9220P-56355	INIL TORX T55	402252076
INV#9220-56360	EXHAUST FLUID	402252076
INV#PS1112074	SEAL KIT	402252012
INV#100	VINYL LOGOS ON BAGS	406372009
INV#3832	TIRE REPAIR	401082011
INV#3792	TIRE REPAIR/ROTATION	401082011
INV#84020	TOOLBOX	410532081
INV#84153	WIRE WHEEL	402252076
INV#84187	BLSTR PK MINIATURE	401032012
INV#84766	DECAL REMOVER	410532076

LNVC#	Name	Description	Line Item	PO#	Amount
7.49	BAL CLAYTON NM 88415				
84834	NAPA AUTO PARTS	INV#84834 HIGH MILEAGE OIL	401082012		7.99
7.99	TOT\$ MAIN STREET AUTO PARTS			26367	
	PAID 112 MAIN ST				
7.99	BAL CLAYTON NM 88415				
2019	NEEDO-NM	2019 MEMBERSHIP	401012073		100.00
100.00	TOT\$ MARY CAMPBELL, TREASURER			26596	
	PAID P.O. BOX 256				
100.00	BAL MOSQUERO NM 87733				
EMS02181952	NEW MEXICO EMS BUREAU	TAMI STOGSDILL EMT-I	412612010		40.00
140.00	TOT\$	DUSTY RUSSELL EMT-I	414662010		40.00
	PAID	GAYLE RIVALE EMT-B	414662010		30.00
140.00	BAL	KEVIN TOWNDROW EMT-B	414662010		30.00
		INV#EMS02181952			
6419	NM EDGE COUNTY COLLEGE	INV#6419 CLASSES C GONZALEZ	401042010		300.00
300.00	TOT\$ NMSU COOPERATIVE EXTENSION SVC			26586	
	PAID MSC 3 AE, P.O. BOX 30003				
300.00	BAL LAS CRUCES NM 88003 8003				
6344	NM EDGE COUNTY COLLEGE	INV#6344 CLASSES B. GREEN	401042010		280.00
280.00	TOT\$ NMSU COOPERATIVE EXTENSION SVC			26586	
	PAID MSC 3 AE, P.O. BOX 30003				
280.00	BAL LAS CRUCES NM 88003 8003				
1293	NORTHERN NEW MEXICO GAS CO.	INV#1293 PROPANE	407412025		792.67
792.67	TOT\$				
	PAID P.O. BOX 144				
792.67	BAL ANGEL FIRE NM 87710				
1366	NORTHERN NEW MEXICO GAS CO.	INV#1366 PROPANE	407412025		531.66
531.66	TOT\$			26422	
	PAID P.O. BOX 144				
531.66	BAL ANGEL FIRE NM 87710				
268789599001	OFFICE DEPOT	INV#268789599001 SMART ROUTERS	410532081		242.97
242.97	TOT\$			26539	
	PAID P.O. BOX 660113				
242.97	BAL DALLAS TX 75266 0113				
268790335001	OFFICE DEPOT	INV#268790335001 CORKLESS PHONE	410532081		56.22
56.22	TOT\$			26539	
	PAID P.O. BOX 660113				
56.22	BAL DALLAS TX 75266 0113				
268790336001	OFFICE DEPOT	INV#268790336001 BOARD/MARKERS	410532081		103.39
103.39	TOT\$			26539	
	PAID P.O. BOX 660113				
103.39	BAL DALLAS TX 75266 0113				
1	OFFICE DEPOT	CREDIT ON DRY ERASE BOARD	410532081		94.49
94.49	TOT\$				
	PAID P.O. BOX 660113				
94.49	BAL DALLAS TX 75266 0113				

LINE	ITEM	PO#	Amount
268790337001	OFFICE DEPOT		
29.99	TOT\$		29.99
PAID		26539	
29.99	BAL		
269288638001	OFFICE DEPOT		
76.98	TOT\$		44.99
PAID		26539	
76.98	BAL		31.99
269293298001	OFFICE DEPOT		
52.77	TOT\$		52.77
PAID		26539	
52.77	BAL		
270390195001	OFFICE DEPOT		
59.98	TOT\$		59.98
PAID		26539	
59.98	BAL		
270399802001	OFFICE DEPOT		
76.87	TOT\$		76.87
PAID		26539	
76.87	BAL		
274833287001	OFFICE DEPOT		
30.78	TOT\$		30.78
PAID		26539	
30.78	BAL		
274836047001	OFFICE DEPOT		
27.91	TOT\$		27.91
PAID		26539	
27.91	BAL		
278069712001	OFFICE DEPOT		
10.99	TOT\$		10.99
PAID		26539	
10.99	BAL		
278078666001	OFFICE DEPOT		
51.79	TOT\$		51.79
PAID		26539	
51.79	BAL		
279866670001	OFFICE DEPOT		
170.99	TOT\$		170.99
PAID		26539	
170.99	BAL		
7560	PANHANDLE BREATHING AIR SYSTEMS		
1545.00	TOT\$		1545.00
PAID		26556	
1545.00	BAL		
7561	PANHANDLE BREATHING AIR SYSTEMS		
1510.00	TOT\$		1510.00
PAID		26556	
1510.00	BAL		

INVC#	Name	Description	Line Item	PO#	Amount
1510.00	BAL BUSHLAND TX 79012				
53634	PENGUIN MANAGEMENT, INC	INV#53634 CALL OUT SERVICE SFD	408452076	26601	1128.00
1128.00	TOT\$ PAID				
1128.00	BAL 2 KIEL AVE., #303 KINNELON NJ 07405				
53677	PENGUIN MANAGEMENT, INC	INV#53677 CALL OUT SERVICE REFD	410532076	26601	834.00
834.00	TOT\$ PAID				
834.00	BAL 2 KIEL AVE., #303 KINNELON NJ 07405				
354359	PINNACLE PROPANE	INV#354359 PROPANE	410532025	26577	513.22
513.22	TOT\$ PAID				
513.22	BAL P.O. BOX 625 CLAYTON NM 88415				
398813	PINNACLE PROPANE	INV#398813 PROPANE	410532025	26577	233.52
233.52	TOT\$ PAID				
233.52	BAL P.O. BOX 625 CLAYTON NM 88415				
354409	PINNACLE PROPANE	INV#354409 PROPANE	410532025	26577	306.02
306.02	TOT\$ PAID				
306.02	BAL P.O. BOX 625 CLAYTON NM 88415				
70895	PINNACLE PROPANE	INV#70895 SUPPLY	410532025	26577	66.37
66.37	TOT\$ PAID				
66.37	BAL P.O. BOX 625 CLAYTON NM 88415				
354394	PINNACLE PROPANE	INV#354394 PROPANE	408452025	26577	135.82
135.82	TOT\$ PAID				
135.82	BAL P.O. BOX 625 CLAYTON NM 88415				
398847	PINNACLE PROPANE	INV#398847 PROPANE	408452025	26577	121.77
121.77	TOT\$ PAID				
121.77	BAL P.O. BOX 625 CLAYTON NM 88415				
398896	PINNACLE PROPANE	INV#398896 PROPANE	411572025	26577	680.97
680.97	TOT\$ PAID				
680.97	BAL P.O. BOX 625 CLAYTON NM 88415				
398805	PINNACLE PROPANE	INV#398805 PROPANE	412612025	26577	308.02
308.02	TOT\$ PAID				
308.02	BAL P.O. BOX 625 CLAYTON NM 88415				
398933	PINNACLE PROPANE	INV#398933 PROPANE	409492025	26577	308.47
308.47	TOT\$ PAID				
308.47	BAL P.O. BOX 625 CLAYTON NM 88415				
398934	PINNACLE PROPANE	INV#398934 PROPANE	409492025	26577	476.80

AMOUNT	DATE	DESCRIPTION	ACCOUNT	AMOUNT
476.80	TOT\$ PAID	P.O. BOX 625		
476.80	BAL	CLAYTON NM 88415		
114.32	TOT\$ PAID	PINNACLE PROPANE	INV#354453 PROPANE REFD CUATES 410532025	114.32
114.32	BAL	CLAYTON NM 88415		
15.00	TOT\$ PAID	POSTMASTER	1 ROLL ADDITIONAL OUNCE STAMPS 401062006	15.00
15.00	BAL	CLAYTON NM 88415		
165.00	TOT\$ PAID	POSTMASTER	150 \$1 STAMPS 426752009	150.00
165.00	BAL	CLAYTON NM 88415	1 ROLL ADDITIONAL OUNCE STAMPS 426752009	15.00
35.43	TOT\$ PAID	R.W. ISAACS HARDWARE	INV#C130162 KEYBLANK/DEADBOLT 401032012	35.43
35.43	BAL	CLAYTON NM 88415		
120.96	TOT\$ PAID	R.W. ISAACS HARDWARE	INV#C130180 SECURE LIGHT/BATTERY 410532012	120.96
120.96	BAL	CLAYTON NM 88415		
11.49	TOT\$ PAID	R.W. ISAACS HARDWARE	INV#C130183 CREDIT 401032012	11.49
11.49	BAL	CLAYTON NM 88415		
4.98	TOT\$ PAID	R.W. ISAACS HARDWARE	INV#A99399 KEYBLANK 401032012	4.98
4.98	BAL	CLAYTON NM 88415		
28.00	TOT\$ PAID	R.W. ISAACS HARDWARE	INV#B91734 GAS CAN 410532076	28.00
28.00	BAL	CLAYTON NM 88415		
10.32	TOT\$ PAID	R.W. ISAACS HARDWARE	INV#C130315 FLT CORNER IRON 401032012	10.32
10.32	BAL	CLAYTON NM 88415		
34.88	TOT\$ PAID	R.W. ISAACS HARDWARE	INV#C130363 SANDER/NOT/BIT 401032012	34.88
34.88	BAL	CLAYTON NM 88415		
6.79	TOT\$ PAID	R.W. ISAACS HARDWARE	INV#C130386 SUPPLIES 401032012	6.79
6.79	BAL	CLAYTON NM 88415		

INVC#	Name	Description	Line Item	PO#	Amount
C130396	R.W. ISAACS HARDWARE	INV#C130396 C-CLAMP/HINGE	401032012		14.47
14.47	DRAWER J				
	CLAYTON NM 88415				
B91776	R.W. ISAACS HARDWARE	INV#B91776 DBL JACK CHAIN	401032012		4.83
4.83	DRAWER J				
	CLAYTON NM 88415				
B91780	R.W. ISAACS HARDWARE	INV#B91780 PASTEL BASE/COVER	401032023		50.97
50.97	DRAWER J				
	CLAYTON NM 88415				
A99485	R.W. ISAACS HARDWARE	INV#A99485 VELCRO TAPE	401032012		2.67
2.67	DRAWER J				
	CLAYTON NM 88415				
C130646	R.W. ISAACS HARDWARE	INV#C130646 HOOVER BELT	401032046		3.29
3.29	DRAWER J				
	CLAYTON NM 88415				
B91847	R.W. ISAACS HARDWARE	INV#B91847 PASTEL BASE	401032023		31.99
31.99	DRAWER J				
	CLAYTON NM 88415				
B91851	R.W. ISAACS HARDWARE	INV#B91851 PASTEL BASE/PRIMER	401032023		40.48
40.48	DRAWER J				
	CLAYTON NM 88415				
C130763	R.W. ISAACS HARDWARE	INV#C130763 TAPE/PAPER/BULB	401032012		17.96
17.96	DRAWER J				
	CLAYTON NM 88415				
C130807	R.W. ISAACS HARDWARE	INV#C130807 SCREWS	401032012		4.79
4.79	DRAWER J				
	CLAYTON NM 88415				
C130835	R.W. ISAACS HARDWARE	INV#C130835 LOCKSET KEY BLANK	401082012		69.42
69.42	DRAWER J				
	CLAYTON NM 88415				
B92005	R.W. ISAACS HARDWARE	INV#B92005 DUCT TAPE	401032012		6.00
6.00	DRAWER J				
	CLAYTON NM 88415				
B92029	R.W. ISAACS HARDWARE	INV#B92029 FASTENERS/BIT SET	401032012		15.61
15.61	DRAWER J				
	CLAYTON NM 88415				

15.61	BAL	CLAYTON NM 88415					
B92042	TOT\$	R.W. ISAACS HARDWARE	INV#B92042 BIT SET	401032012			24.99
24.99	PAID	DRAWER J					
24.99	BAL	CLAYTON NM 88415					
CL130442	TOT\$	R.W. ISAACS HARDWARE	INV#C130442 HILLMAN FASTENERS	401032012			.43
.43	PAID	DRAWER J				26474	
.43	BAL	CLAYTON NM 88415					
CL130854	TOT\$	R.W. ISAACS HARDWARE	INV#C130854 CRIMP WHEEL	410532012			5.58
5.58	PAID	DRAWER J					
5.58	BAL	CLAYTON NM 88415					
CL130965	TOT\$	R.W. ISAACS HARDWARE	INV#C130965 BULBS	402252012			33.16
33.16	PAID	DRAWER J					
33.16	BAL	CLAYTON NM 88415					
CL131108	TOT\$	R.W. ISAACS HARDWARE	INV#C131108 ACETONE/PAINT TOOL	410532076			12.48
12.48	PAID	DRAWER J					
12.48	BAL	CLAYTON NM 88415					
CL131276	TOT\$	R.W. ISAACS HARDWARE	INV#C131276 12PK C PRO BATTERY	408452076			74.95
74.95	PAID	DRAWER J					
74.95	BAL	CLAYTON NM 88415					
SL131391	TOT\$	R.W. ISAACS HARDWARE	INV#S131391 CLEANVIEW VAC	401082036		26474	96.99
96.99	PAID	DRAWER J					
96.99	BAL	CLAYTON NM 88415					
67691300	TOT\$	RANCH MARKET	INV#67691300 SUPPLIES	409492010			13.00
13.00	PAID	300 S. FIRST STREET					
13.00	BAL	CLAYTON NM 88415					
35281023	TOT\$	RANCH MARKET	INV#35281023 SUPPLIES	410532076		26338	19.29
19.29	PAID	300 S. FIRST STREET					
19.29	BAL	CLAYTON NM 88415					
48991319	TOT\$	RANCH MARKET	INV#48991319 SUPPLIES	410532076		26338	39.77
39.77	PAID	300 S. FIRST STREET					
39.77	BAL	CLAYTON NM 88415					
32891742	TOT\$	RANCH MARKET	INV#32891742 SUPPLIES	410532010			23.57
23.57	PAID	300 S. FIRST STREET					
23.57	BAL	CLAYTON NM 88415					
55101632	TOT\$	RANCH MARKET	INV#55101632 SUPPLIES	410532076		26338	15.97

Line Item	PO#	Amount
15.97 TOT\$		
PAID		
300 S. FIRST STREET		
CLAYTON NM 88415		
15.97 BAL		
182.14 TOT\$		
RAY'S TRUCK SERVICE		
INV#64802 TRUCK INSPECTION	409492012	
1808 MOUNTAIN ROAD		
TUCUMCARI NM 88401		
182.14 BAL		182.14
22.79 TOT\$		
RICOH USA, INC		
INV#31423837 SHERIFF PRINTER	401082013	
P.O. BOX 660342		
DALLAS TX 75266		
22.79 BAL		22.79
31421443 TOT\$		
RICOH USA, INC		
INV#31421443 TREASURER PRINTER	401072013	
P.O. BOX 660342		
DALLAS TX 75266		
51.89 TOT\$		
RICOH USA, INC		
INV#31421954 COUNTY MGR LEASE	401022013	
P.O. BOX 660342		
DALLAS TX 75266		
51.89 BAL		51.89
274.62 TOT\$		
RICOH USA, INC		
INV#31424870 SHERIFF LEASE	401082013	
P.O. BOX 660342		
DALLAS TX 75266		
274.62 BAL		274.62
219.93 TOT\$		
RICOH USA, INC		
INV#9027101442 ASSESSOR LEASE	499792013	
P.O. BOX 660342		
DALLAS TX 75266		
219.93 BAL		219.93
379.84 TOT\$		
RICOH USA, INC		
INV#9027101442 CLERK LEASE	401042013	
P.O. BOX 660342		
DALLAS TX 75266		
379.84 BAL		379.84
1080096544 TOT\$		
RICOH USA, INC		
INV#1080096544 TONER	401042009	
P.O. BOX 660342		
DALLAS TX 75266		
85.37 TOT\$		
RICOH USA, INC		
INV#5055986492 TREASURER METER	401072009	
P.O. BOX 660342		
DALLAS TX 75266		
146.83 TOT\$		
RICOH USA, INC		
INV#5055986492 CO MGR METER	415682076	
P.O. BOX 660342		
DALLAS TX 75266		
146.83 BAL		146.83
32495 TOT\$		
RICOH USA, INC		
INV#32495 NOMEK OUTFITTERS PKG	410542081	
P.O. BOX 660342		
DALLAS TX 75266		
4690.95 TOT\$		
RICOH USA, INC		
INV#32495 BELTS	410542081	
P.O. BOX 660342		
DALLAS TX 75266		
4690.95 BAL		4690.95
96111 TOT\$		
SENTINEL OFFENDER SERVICES		
INV#96111 GPS ANKLE MONITORING	424772307	
190 NORTH HANCOCK ST., SITE 103		
ANAHEIM CA 92807		
1059.30 TOT\$		
SENTINEL OFFENDER SERVICES		
INV#96111 GPS ANKLE MONITORING	424772307	
190 NORTH HANCOCK ST., SITE 103		
ANAHEIM CA 92807		
1059.30 BAL		1059.30
437009 TOT\$		
SIX M AG SUPPLY		
INV#437009 DOG FOOD	401082041	
1 LINCOLN ST		
CLAYTON NM 88415		
78.98 TOT\$		
SIX M AG SUPPLY		
INV#437009 DOG FOOD	401082041	
1 LINCOLN ST		
CLAYTON NM 88415		
78.98 BAL		78.98

1777 104.55 TOT\$ PAID 401082011 26265 104.55
1782 373.14 TOT\$ PAID 402252043 373.14
2282019 1586.14 TOT\$ PAID
2282019 1586.14 TOT\$ PAID

SIX-M TIRE AND SERVICE INV#1777 OIL CHANGE
1 LINCOLN ST
CLAYTON NM 88415
SIX-M TIRE AND SERVICE INV#1782 TIRES
1 LINCOLN ST
CLAYTON NM 88415

SOUTHWESTERN ELECTRIC
BOX 369
CLAYTON NM 88415

SHERIFF SUBSTATION 401032025 26550 105.86
CAPULIN FIRE HOUSE 407412025 26550 98.87
CAPULIN EMS 412612025 26550 60.70
REFD KENTON STATION 410532025 26550 111.53
GREENVILLE FD 411572025 26550 98.57
REFD SEMECA STATION 410532025 26550 79.35
SEDAN SCHOOL WELL 408452025 26550 88.00
SEDAN FD 408452025 26550 274.16
SEDAN FD N OF PODZEMNY HOUSE 408452025 26550 58.85
SEDAN FD THOMAS STATION 408452025 26550 107.58
AMSTAD FD AG SHOP 409492025 26550 135.81
REFD S OF GILBERTS HOUSE 410532025 26550 85.52
REFD MAIN 5 MILES W OF CLAYON 410532025 26550 224.80
AMSTAD FIRE WELL 409492025 26550 56.54

SFC OFFICE PRODUCTS INV#1532006-0 36X48 WHITE BOARD 410532076 26566 107.35
PO BOX 39
GUYMON OK 73942

SWAGERTY TRADING CO. INV#6416 OXYGEN CYLINDER/STRIKER 402252012 26507 71.76
BOX 88
CLAYTON NM 88415

SWAGERTY TRADING CO. INV#6355 REPLACE HEAT THERMOSTA 402252012 26507 310.14
BOX 88
CLAYTON NM 88415

THE SUPPLY CACHE INV#31726 IRPG (200) 415682081 26536 739.95
1980 CARIBOU DRIVE
FORT COLLINS CO 80525

THE WESTERN GROUP INV#352200 CONVEYOR BELT 402252012 26506 1293.53
3950 NW ST. HELENS RD
PORTLAND OR 97210 1423

TOWN OF CLAYTON
1 CHESTNUT
CLAYTON NM 88415

DISPATCH JANUARY 2019 500812112 6990.42
ROAD DEPT 402252025 100.30
SHERIFF DEPT - ARMORY 605932012 172.76
COURTHOUSE 401032025 458.92
ANNEX 401032025 81.22
OLD REFD BUILDING 401032025 44.40

FEBRUARY 2019
7848.02 TOT\$ PAID
7848.02 BAL

TOT\$ PAID
TOT\$ BAL

TOT\$ PAID
TOT\$ BAL

TOT\$ PAID
TOT\$ BAL

TOT\$ PAID
TOT\$ BAL

TOT\$ PAID
TOT\$ BAL

TOT\$ PAID
TOT\$ BAL

TOT\$ PAID
TOT\$ BAL

Account #	Description	Line Item	PO#	Amount
46366	TRI-STATE RECYCLING LLC	INV#46366 DUMPSTER SVC REFD FEB		
52.56	TOT\$	410532025	26203	52.56
	PAID			
52.56	BAL			
	P.O. BOX 235			
	TEXLINE TX 79087			
46057	TRI-STATE RECYCLING LLC	INV#46057 DUMPSTER SVC GFD FEB		
255.00	TOT\$	411572025	26203	255.00
	PAID			
255.00	BAL			
	P.O. BOX 235			
	TEXLINE TX 79087			
28:04.02	TRIADIC	INV#28:04.2 NETWORKING		
3899.48	TOT\$	401022013	26476	1245.70
	PAID			
3899.48	BAL			
	P.O. DRAWER 471	401062013	26476	1326.89
	DEMING NM 88031 0471	401072013	26476	1326.89
MARCH2019	UNION COUNTY GENERAL HOSPITAL	LOAN ALLOCATION MARCH 2019		
9970.91	TOT\$	60832076	26101	9970.91
	PAID			
9970.91	BAL			
	P.O. BOX 489			
	CLAYTON NM 88515			
857814	UNION COUNTY GENERAL HOSPITAL	ACCT#857814 POST ACCIDENT CHECK		
424.00	TOT\$	401082036	26611	424.00
	PAID			
424.00	BAL			
	P.O. BOX 489			
	CLAYTON NM 88515			
2019MARCH	UNION COUNTY HEALTH CLINIC	APPROVED HEALTHCARE ASSISTANCE		
227.40	TOT\$	406372096	26498	227.40
	PAID			
227.40	BAL			
	P.O. BOX 489			
	CLAYTON NM 88415			
61858	UNION COUNTY LEADER	INV#61858 BOUND BOOK		
362.04	TOT\$	401042014	26493	362.04
	PAID			
362.04	BAL			
	P.O. BOX 486			
	CLAYTON NM 88415			
61811	UNION COUNTY LEADER	INV#61811 2 YEAR SUBSCRIPTION		
67.00	TOT\$	401042014	26493	67.00
	PAID			
67.00	BAL			
	P.O. BOX 486			
	CLAYTON NM 88415			
61857	UNION COUNTY LEADER	INV#61857 DISPLAY AD		
45.31	TOT\$	401052008	26493	45.31
	PAID			
45.31	BAL			
	P.O. BOX 486			
	CLAYTON NM 88415			
1077169	UNITED SUPPLY	INV#1077169 WELD TEES/PARTS		
489.63	TOT\$	408452076	26600	489.63
	PAID			
489.63	BAL			
	P.O. BOX 819			
	HWY 87 SOUTH			
	DALHART TX 79022			
1077351	UNITED SUPPLY	INV#1077351 PARTS		
35.70	TOT\$	408452076	26600	35.70
	PAID			
35.70	BAL			
	P.O. BOX 819			
	HWY 87 SOUTH			
	DALHART TX 79022			
1077356	UNITED SUPPLY	INV#1077356 WELD ELBOW		
14.49	TOT\$	408452076	26600	14.49
	PAID			
	P.O. BOX 819			
	HWY 87 SOUTH			

14.49 BAL DALHART TX 79022

1077731 UNITED SUPPLY 26600 3.62
3.62 TOT\$ P.O. BOX 819 408452076
PAID HWY 87 SOUTH 3.62
DALHART TX 79022

PS060086532 WARREN CAT 251.04
251.04 TOT\$ 402252076
PAID PO BOX 842116 251.04
DALIAS TX 75284 2116

58031685 WEX BANK 26606
9574.14 TOT\$ 499792011 72.93
PAID PO BOX 6293 26606 293.25
9574.14 BAL CAROL STREAM IL 60197 6293 26606 6387.26
26606 1805.33
26606 723.42
26606 38.78
26606 65.23
26606 77.83
26606 110.11

53849 ZIA GRAPHICS 183.00
183.00 TOT\$ 401042081 183.00
PAID 2730 CARLISLE NE
ALBUQUERQUE NM 87110

TOTAL INVOICING 135669.41

PERMIT NO. 335

This permit is granted on this 12 day of March, 2019, by the Board of Commissioners of Union County, New Mexico, (County) and E.N.M.R. Telephone Cooperative, (Permittee),

Address: 7111 N. Prince Clovis, NM 88102

This permit is for the sole purpose of allowing Permittee to lay (pipe or cable) for the purpose of fiber optic telecommunication lines across a certain designated County road lying, situated and being in the County of Union, State of New Mexico, more particularly described as follows:

LEGAL DESCRIPTION

Bell Rd, In (NW/4SE/4) Section 7, T25N, R36E

GPS 36°24' 49.47" N, -103°07'59.33" W

This permit is subject to the following provisions:

1. a.) Permittee will dig a trench across the above-described County Road approximately Three (3) feet deep, or a directional bore of the same depth.
- b.) Pipe and/or cable made of fiber optics and in certain instances, encased in HDPE.
- c.) Pipe and/or cable including HDPE inner duct shall be One and One Quarter inch (1.25") maximum inches in diameter and of the type Schedule.
2. Permittee will then fill and compact the trench to restore the road to an even level suitable for public traffic. Restoration of the road shall be subject to the inspection and approval of the County Road Supervisor.
3. Permittee shall install visible, identifiable markers on site, indicating the location of the pipe.
4. Permittee is to perform the construction in such a way as to provide adequate fill on both ends of the road and shall construct any structure that may be necessary or desirable in connection therewith.
5. All excavation and construction performed under this permit shall be consistent with all laws, rules and regulations of the State of New Mexico and of the County.
6. In the event that the County desires to improve the above-described County Road, the County reserves the right to request from the Permittee, if necessary to remove and/or relocate in order to make such improvements. The County will give Permittee notice in advance of making such improvements.
7. Permittee will hold harmless Union County for any damage to third parties resulting from the excavation of fill.
8. Permittee shall erect sufficient warning barricades and signs to alert all traffic of the hazard during construction and restoration.
9. At least twenty-four (24) hour notice shall be provided to the Union County Road Department Supervisor of the commencement and completion of any construction.

Witness our hands and seals this 12 day of March, 20 19 .

SEAL

ATTEST

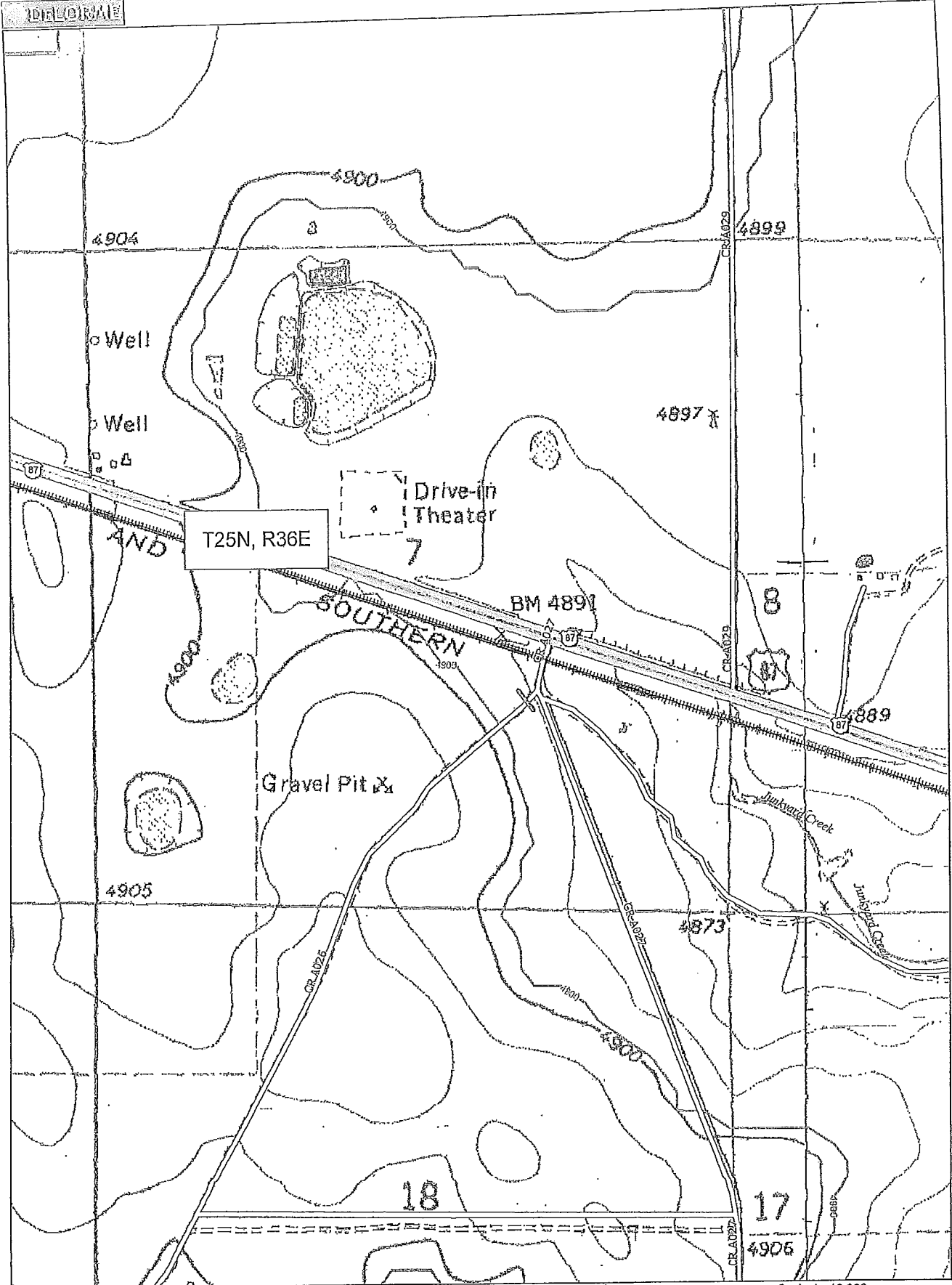
BOARD OF COMMISSIONERS
COUNTY OF UNION, NEW MEXICO

CHAIRMAN

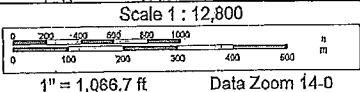
MEMBER

COUNTY CLERK

MEMBER



Data use subject to license.
 © DeLorme, Topo North America™ 10.
 www.delorme.com



	Amount	Approved	Denied	Late Approved	Applicant	Income Guideline	Income	Residency	House Hold #
1	\$ 53.19	\$ 53.19			Chavez, Kevin (P)	County Prisoner			
2	\$ 53.19	\$ 53.19			Romero, Jason (P)	County Prisoner			
3	\$ 121.02	\$ 121.02			Wiseley, Carl (P)	County Prisoner			
	\$ 227.40	\$ 227.40	\$ -						
		3 claims							
		\$ 227.40							

Village of Des Moines

P. O. Box 127
654 Broadway
Des Moines, New Mexico 88418
Phone: 575-278-2127
Fax: 575-278-2126
e-mail: dmoinesvillage@bacavalley.com

Board of Commissioners
County of Union
State of New Mexico
PO Box 308
Clayton, NM 88415

Re: Yearly Contribution

Dear Board of Commissioners:

The Village of Des Moines Senior Center would like to thank you for all your work and contributions you make for our Senior Center. Without your help, our center would not be able to continue.

Our center serves not only the seniors of Des Moines, but also seniors in the surrounding areas of Union County including Folsom, Capulin and Grenville. With serving a large rural area, there is a great need for not only the congregate meals we serve in house, but also for home bound meals, homemaker services and transportation for all of these services.

As you are aware, there will be state wide budget cuts for the services we provide. We are in need of approximately \$12,000 to make ends meet for the upcoming fiscal year. In the past, you have graciously contributed the amount of \$7500, but this year the Village is asking for an increase in your contributions. The following is an example of what we do each and every month:

All raw food must be purchased in advance. As you are well aware, the "local" grocery stores are at least 45 minutes away so the shopping for the menus are made at the beginning of the month for the entire month. All menus are pre-approved from the state and we must be prepared to prepare 20 meals each day. Those meals include the home bound meals also. So therefore, all food is purchased for 20 meals a day. If only 4 people sign up to eat on any given day, that is only \$16 we receive as reimbursement from the state for those 4 meals served even though we had already purchased food for 20. This is exactly what is frustrating and so costly for the center. Sometimes 10 people will sign up in advance to eat, so there are 10 meals prepared and then only 1 of the 10 show up. This becomes a huge meal variance, very costly and a small reimbursement. In short, we must shop for up to 20 meals per serving day, we cook for the ones that previously have signed up or call in on that specific day to eat, but are only reimbursed for the actual meal that is served. The Senior center receives from the state only \$4 per congregate meal and \$6 per home bound meal served. On a daily basis, the center prepares approximately 4

home bound meals that are served that day. This reimbursement does not cover payroll for each day, utilities, food costs and any unexpected cost. These numbers are for FY 2019 and we are expecting a cut in these figures for FY 20 and beyond.

The Village again wants to say thanks for all of your support in that past and we hope that you will continue to support this much needed service in the future.

Please do not hesitate to call with any questions or comments you may have regarding our center. You are welcome any time to eat and spend time with our seniors.

Respectfully submitted,

Stephanie King
Clerk/Treasurer
Village of Des Moines