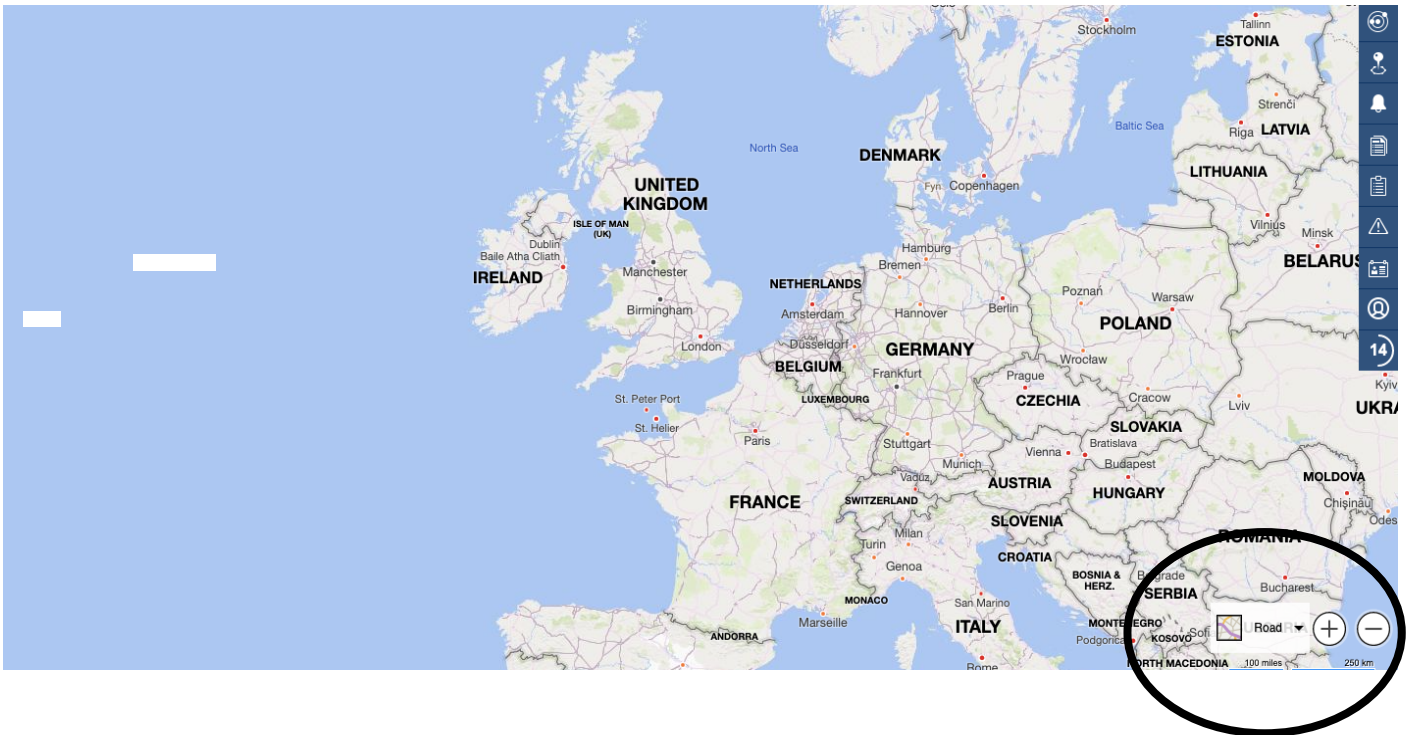




Changing Map Views

This guide will show you how to change your map view, we have different options for you to choose from such as road, satellite, aerial and street view.

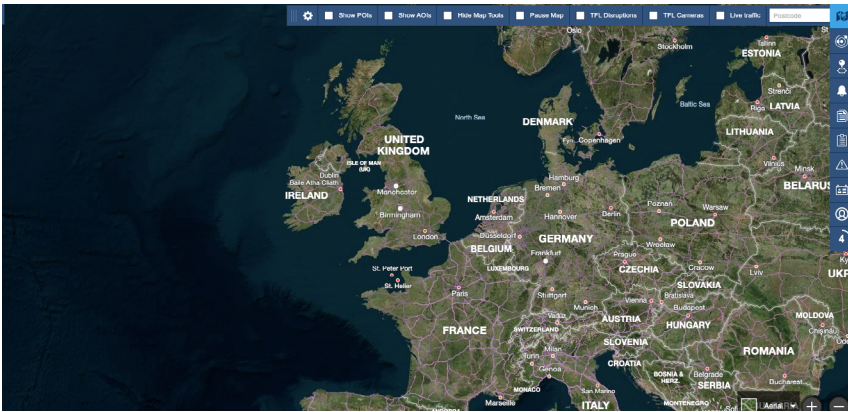
1. Firstly, log into your tracking portal, in the bottom right you will see find the option to change map view, it will be set to road by default.



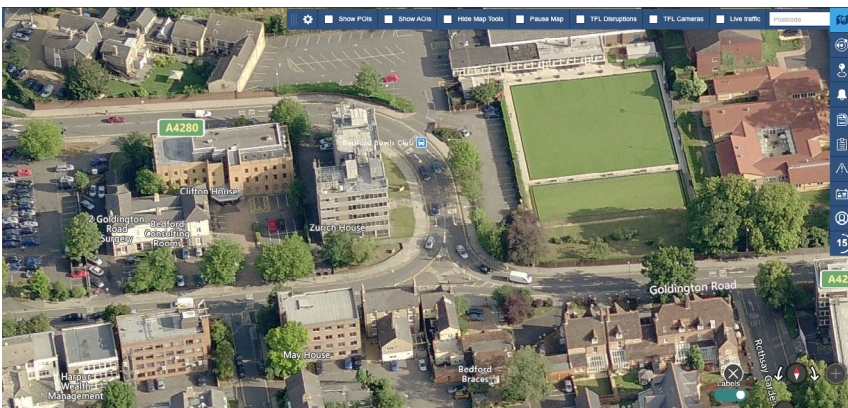
2. Once clicked the different options for map views will show, you can now choose the view you want.



3. Here are the different views to choose from.



Satellite View



Aerial View



Street View



Ordnance Survey