



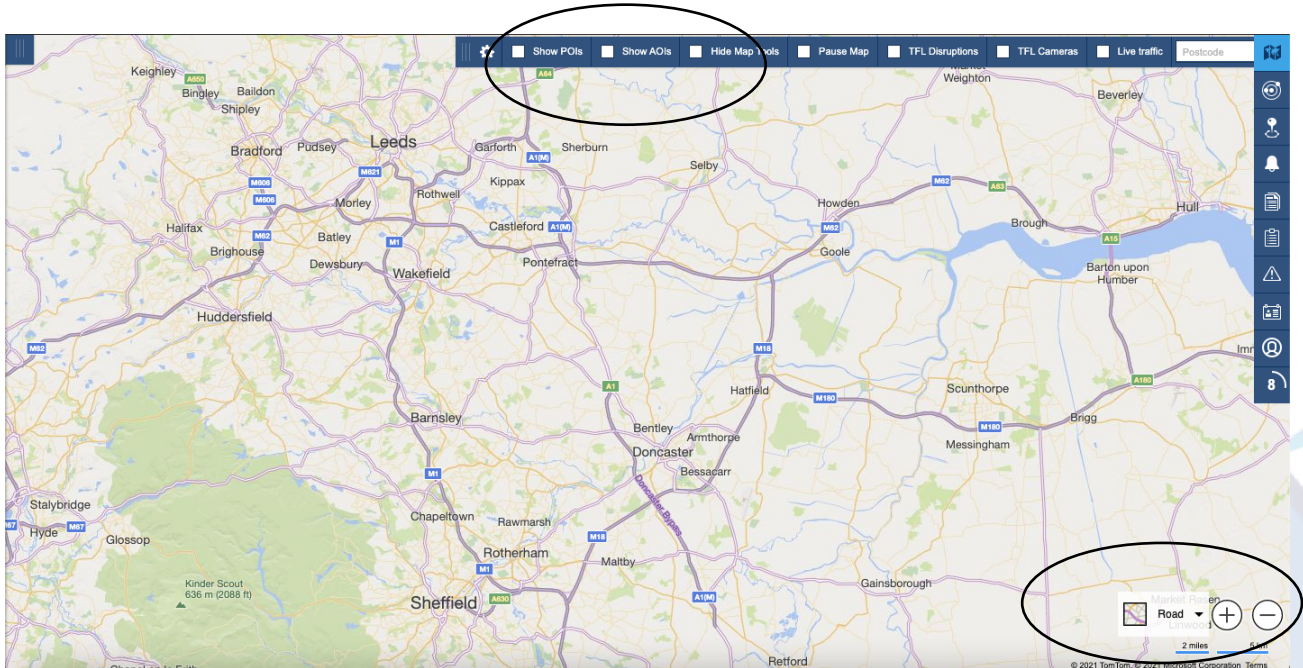
Map Tools

This guide will show you various map tools and how to use various features of the map such as:

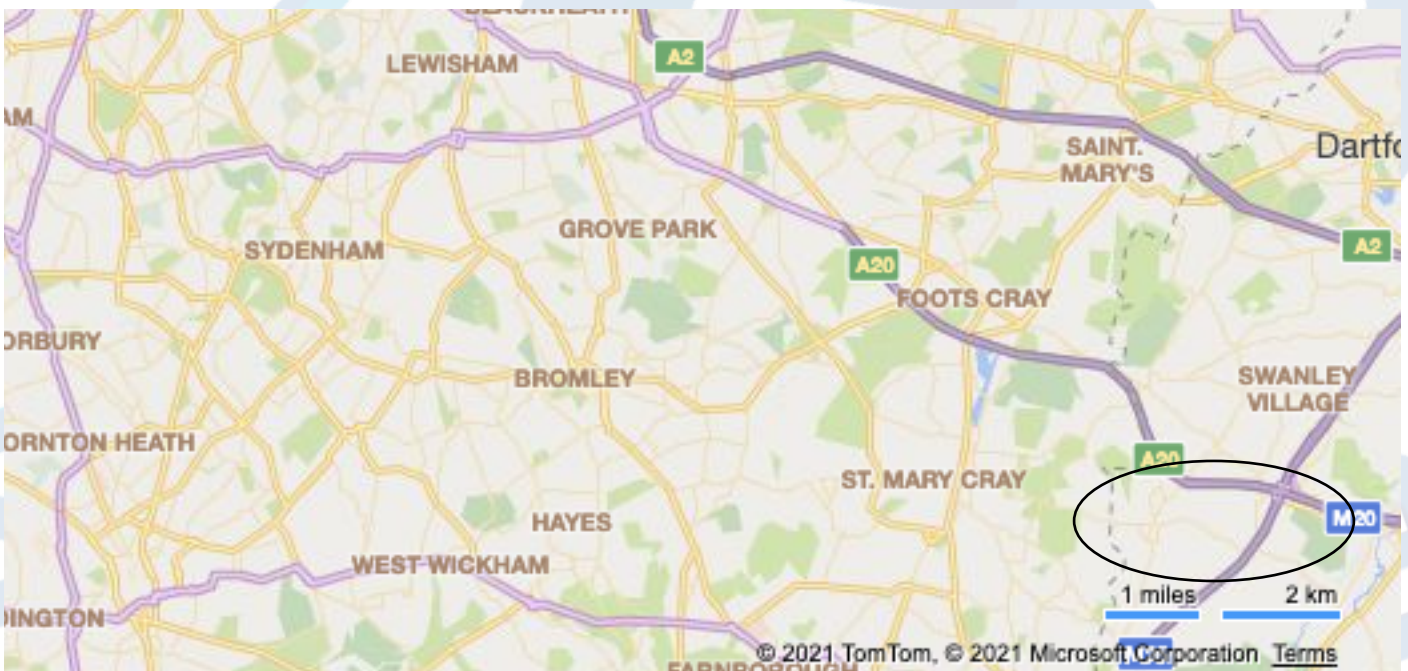
- Turning map tools on/off
- TFL Disruption view
- TFL Camera view
- Live Traffic
- Pausing the map

Turning map tools on/off

1. The map tools allow you to zoom in and out of your map as well as change the map style, to hide them, simply click the hide map tools in the top option bar shown below

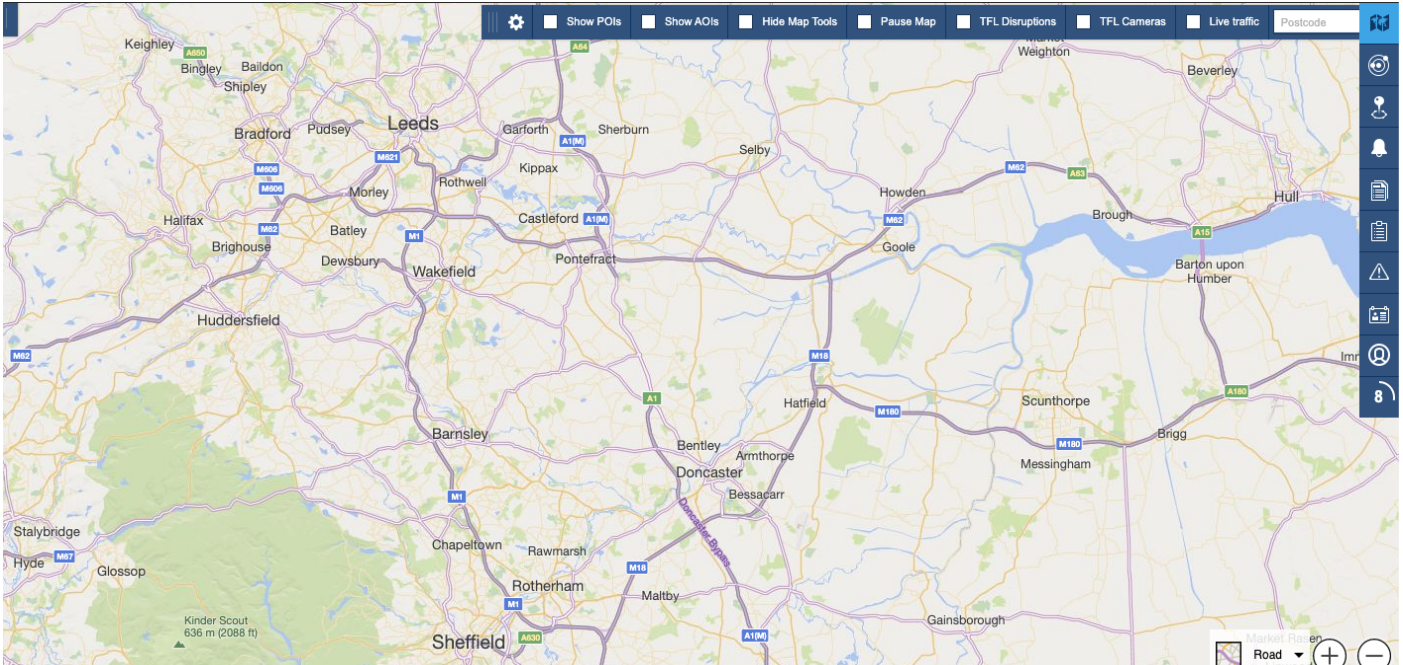


2. Here you will see that the map options have been hidden

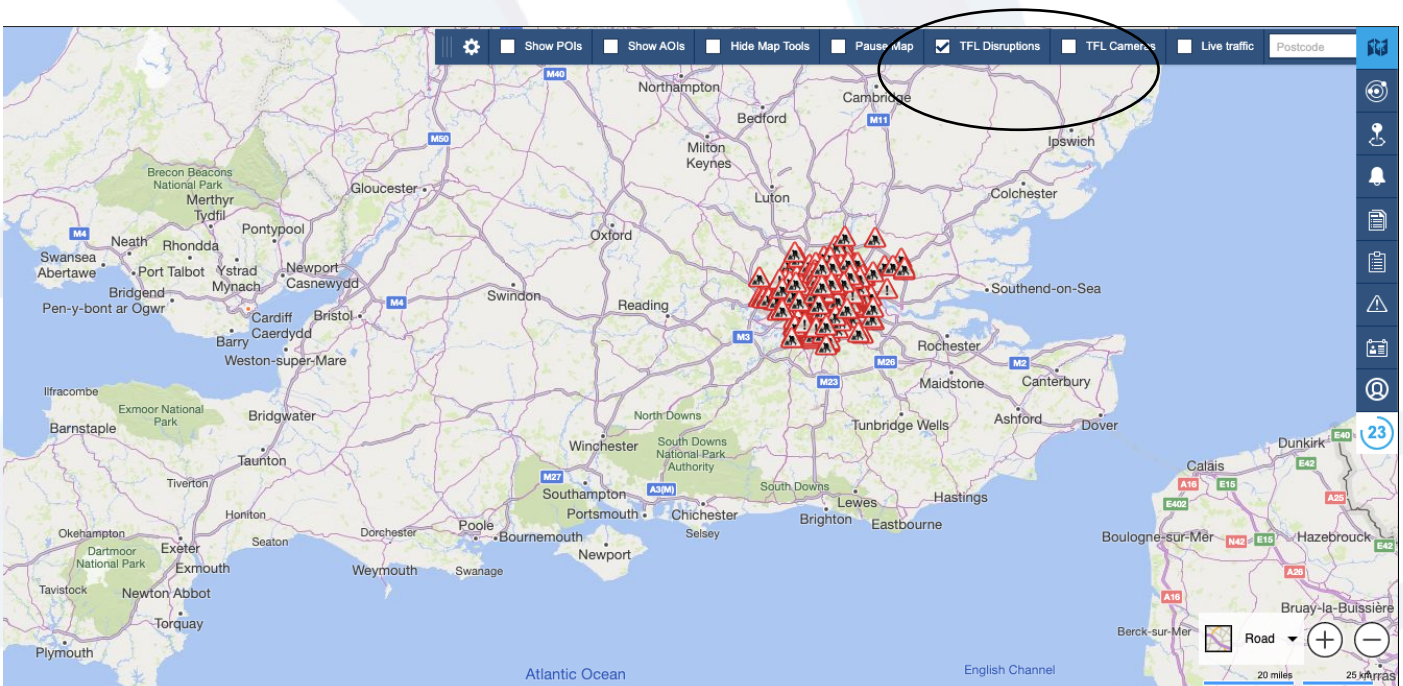


TFL Disruption view

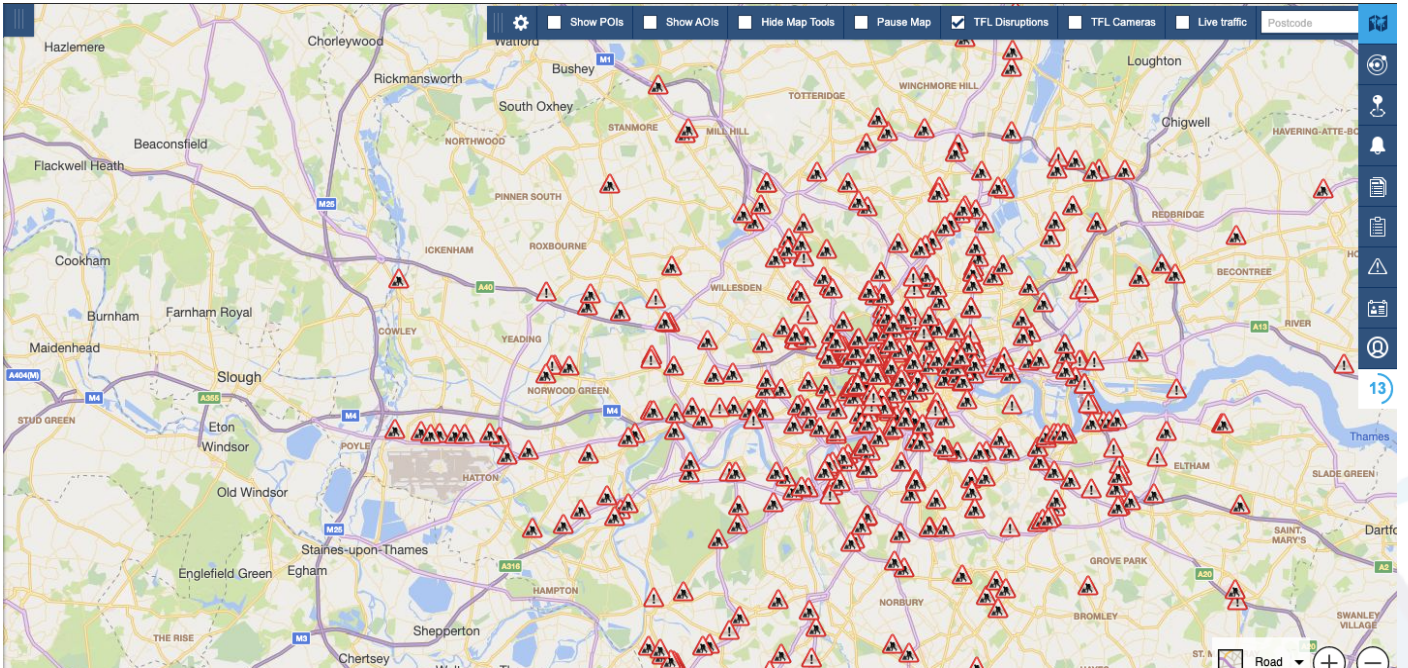
1. TFL or Traffic for London is the government body responsible for the transport system in Greater London, our system can show the TFL's up to date traffic information and camera locations, firstly log into the portal.



2. In the top option bar you will see various check boxes to toggle the relevant information required. To check for traffic disruptions click the TFL Disruption option.

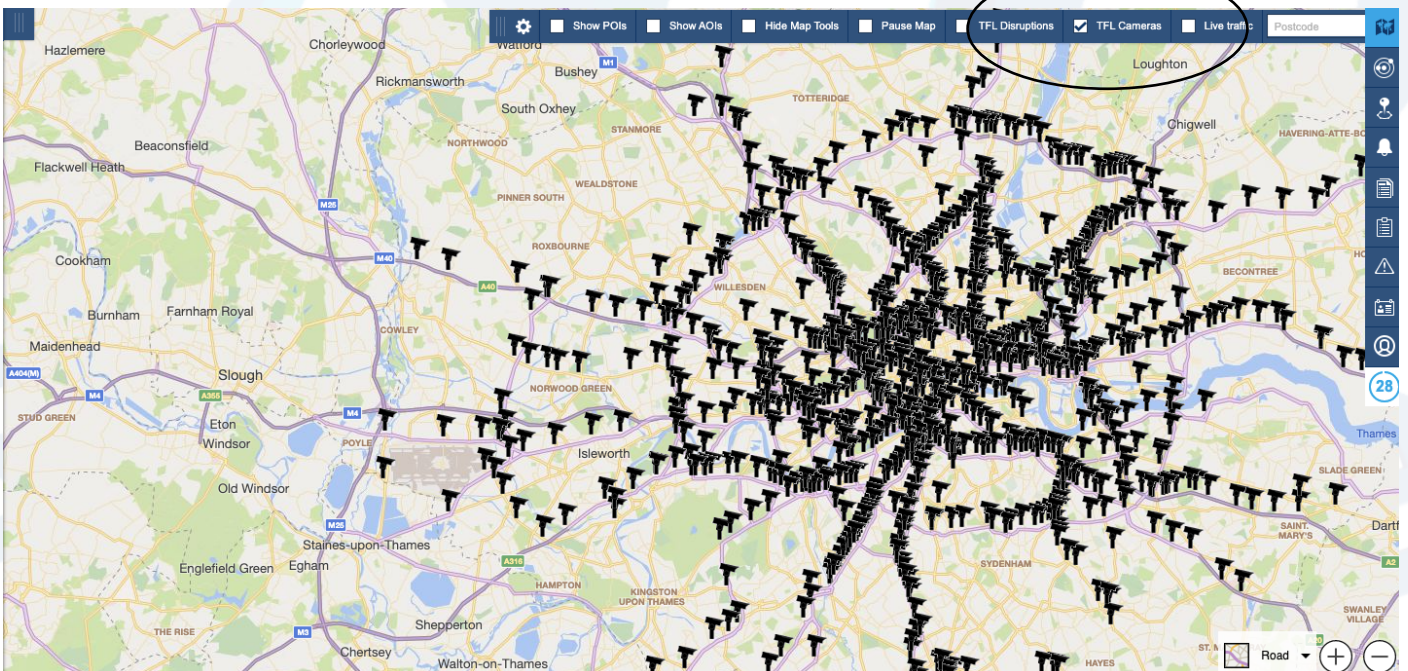


3. From here you will see where all the disruptions are in and around the Greater London area



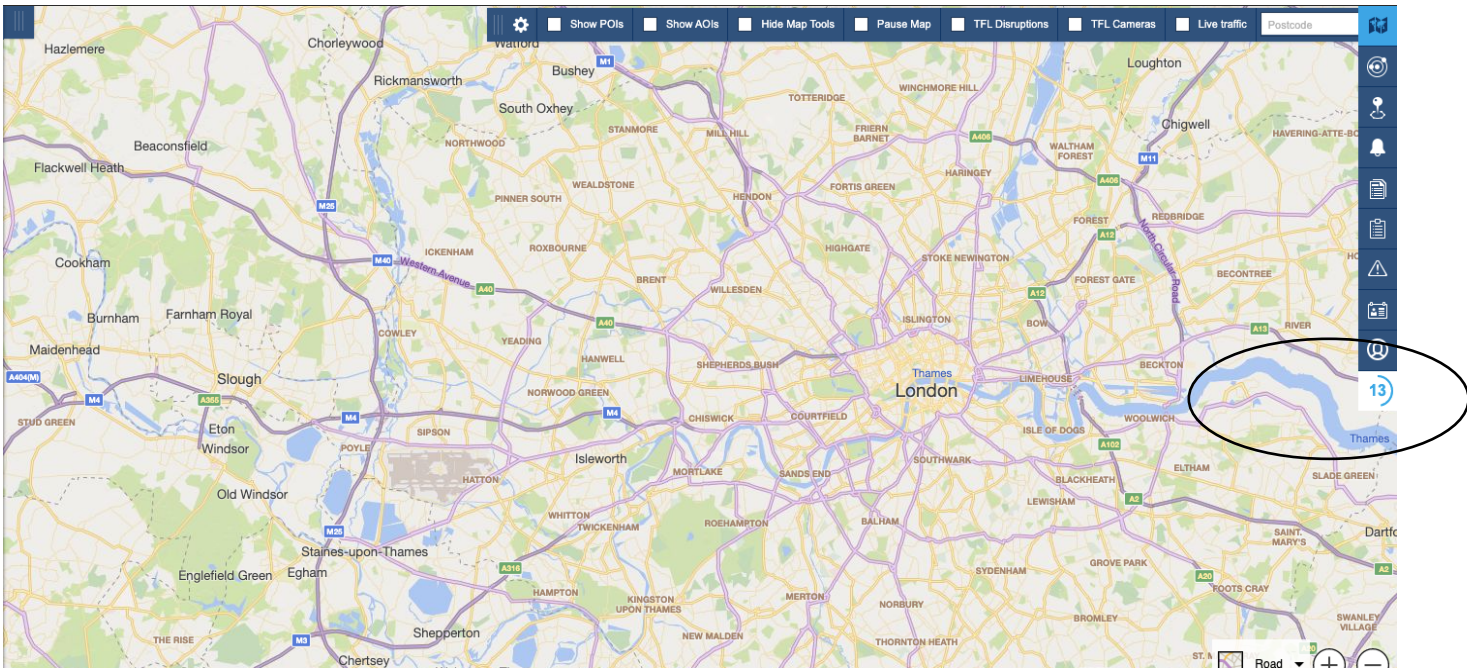
TFL Cameras

1. As above to see where all of the camera locations are from the TFL, simply click the TFL Camera option in the top option bar.

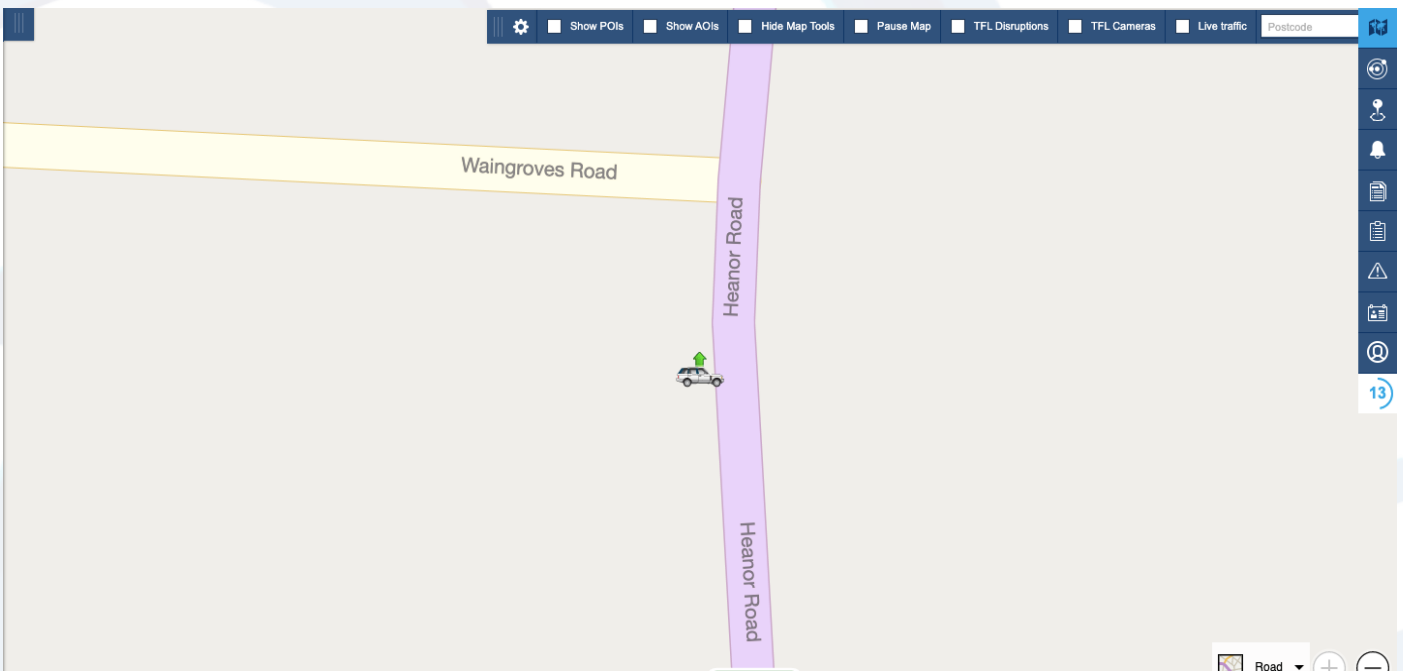


Pausing the map

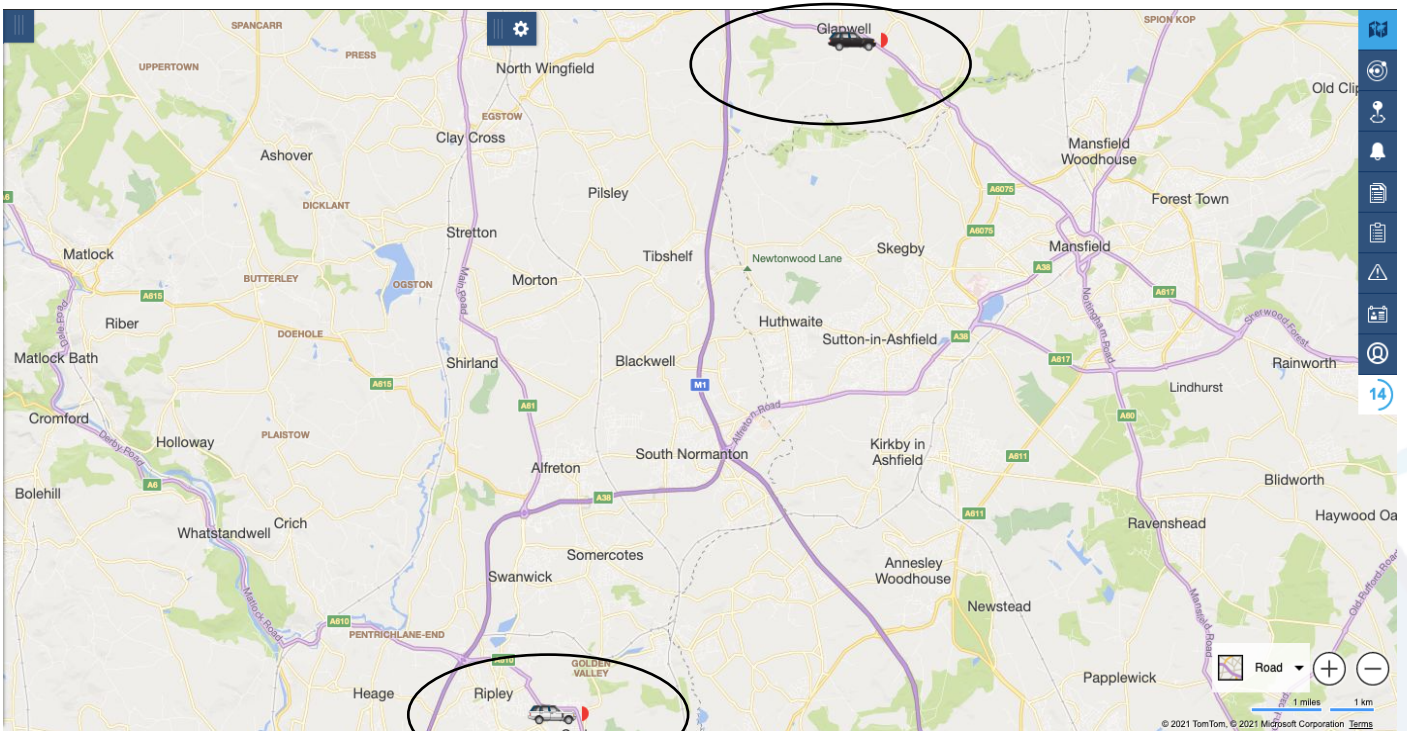
1. When logged into the portal you may notice that it updates every 30 seconds, the timer at the side represents this.



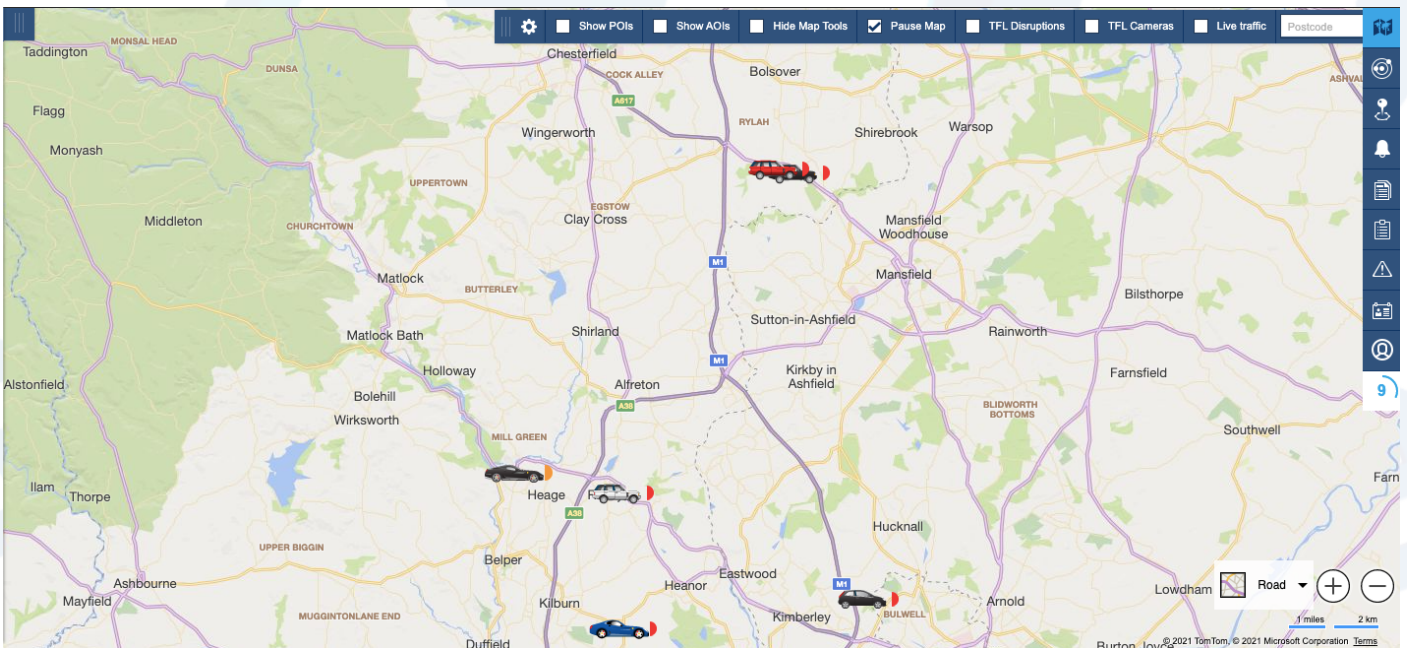
2. Also, you may notice that once a vehicle is selected it will zoom and centre around that vehicle



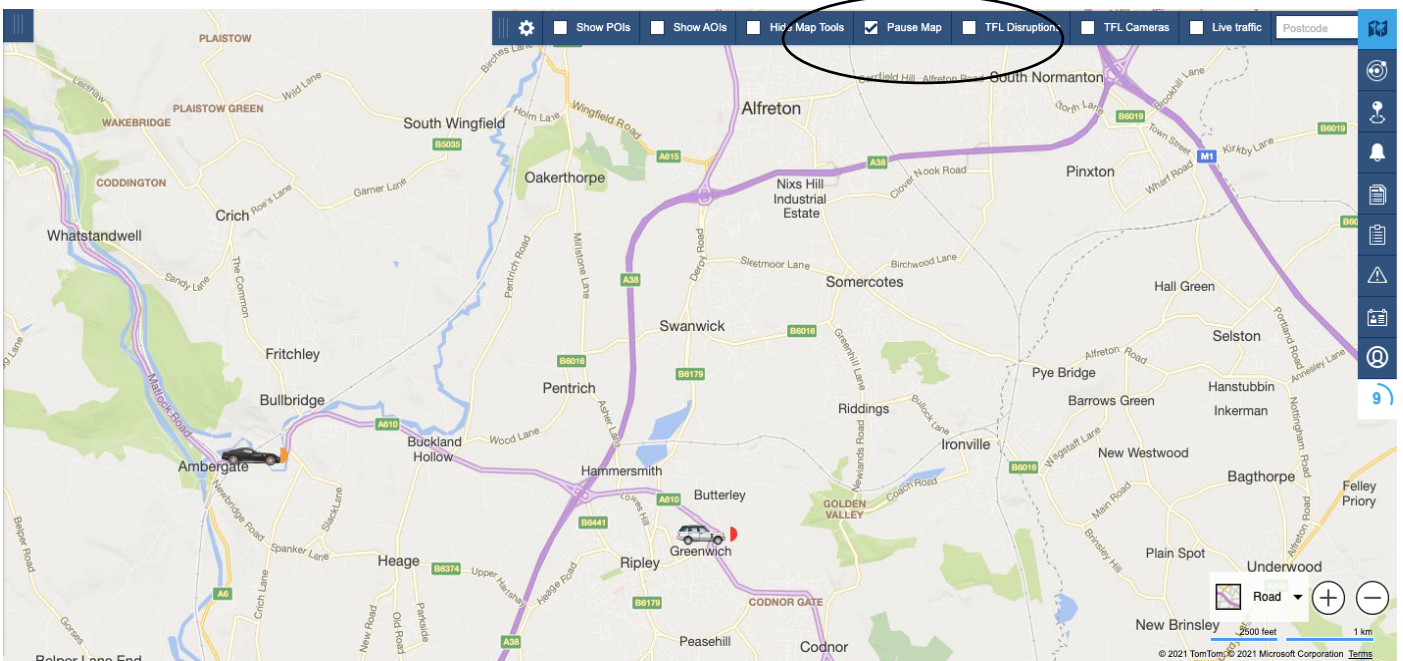
3. Then, if you were to select another vehicle the screen would zoom out so you can see both vehicles.



4. The more vehicles you have selected the system will automatically scale to fit all vehicles on the screen at once. If one of those vehicles goes out of the viewable area, the map will scale after the 30 second timer.

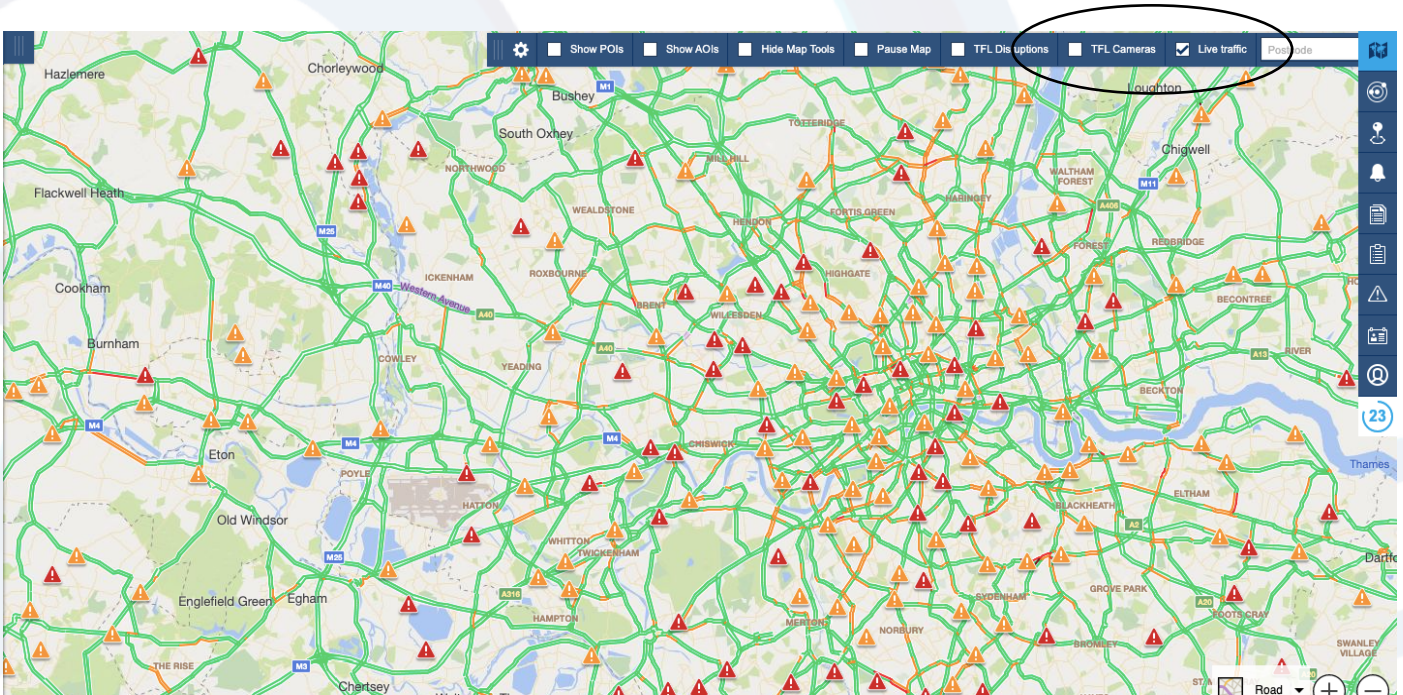


5. To focus on one area and stop the map from scaling simply click the pause map option, this will hold the map in place and stay focused on that area.



Live Traffic View

1. The live traffic view will show live traffic updates with a detailed explanation of the traffic situation for a specific road.



2. As shown here, it will detail the reason, severity, an explanation and a scheduled start and end time.

