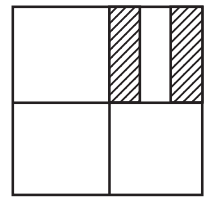


— REAL ESTATE —

TRACT #1 • 160 ACRES ±



LEGAL DESCRIPTION:
NE ¼ - 34 - 3N 20 WIM
Consisting of 160 + acres,
less 6 acres + for house &
improvements
Jackson County, OK

LOCATION: From the Altus Municipal Airport North of Altus, OK on Hwy. 283, travel 2¾ miles East on ECR 160 (same being auction location). Watch for signs.

JACKSON COUNTY FSA 156EZ INFO:

- Farm #7042 • Tract #919
- 152.22 Acres Cropland
- DCP Cropland 152.22

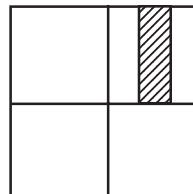
DCP CROP DATA

	Base Acres	PLC Yield
Wheat	110.00	36 bu.

- Tract does not contain wetland
- No WL violations
- Classed as NHEL
- Est. 2020 ad-valorem taxes: \$509.00

TRACT #2 • APPROX. 6 ACRES

LEGAL DESCRIPTION:
Approx. 6 AC out of the
NE¼ - 34 - 3N 20 WIM
with house & outbuildings
Jackson County, OK



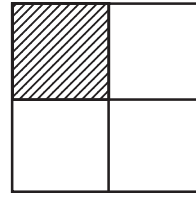
LOCATION: From the Altus Municipal Airport North of Altus, OK on Hwy. 283, travel 2¾ miles East on ECR 160 (same being auction location). Watch for signs.

IMPROVEMENTS AS FOLLOWS:

- 2 Bedroom WF house w/kitchen, dining/living room combination, utility room, window units for A/C, wood stove heating, SWRE for utility service, Jackson County Rural Water Co., Warren, OK, Composition roof, septic tank for sewage, screened in porch, storm cellar, LP tank for house.
- Older WF 4-car shed East of main barn
- WF 1-car detached garage
- Lg. WF Barn w/2 connecting 4-car sheds and shop area
- WF shed West of main barn for storage
- Estimated 2020 ad-valorem taxes: \$454.00

NOTE: Tracts 1 & 2 will be sold separately then combined to determine highest bid

TRACT #3 • 160 ACRES ±



LEGAL DESCRIPTION:
NW ¼ - 35 - 3N 20 WIM
Consisting of 160 ± acres,
less 5.64 acres USA
Jackson County, OK

LOCATION: Across the road East of Tract #1 (watch for signs)

JACKSON COUNTY FSA 156EZ INFO:

- Farm #7042 • Tract #733
- 135.21 Acres Cropland, classed as NHEL
- DCP Cropland 135.21

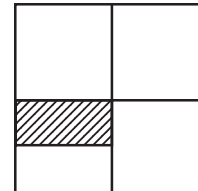
DCP CROP DATA

	Base Acres	PLC Yield
Wheat	129.30	36 bu.

- Wetland determinations not complete
- No WL violations
- Est. 2020 ad-valorem taxes: \$423.00

TRACT #4 • 80 ACRES ±

LEGAL DESCRIPTION:
N ½ - SW ¼ - 16 3N 20 WIM
Consisting of 80 + acres,
Jackson County, OK
Selling surface rights only



LOCATION: 1¼ miles West of Tract #1 on ECR 160, then 2 ¼ miles North on CRNS 205 (watch for signs)

JACKSON COUNTY FSA 156EZ INFO:

- Farm #7042 • Tract #155
- 79.86 Acres Cropland, classed as NHEL
- DCP Cropland 79.86

DCP CROP DATA

	Base Acres	PLC Yield
Wheat	62.00	36 bu.

- Tract does not contain wetland
- No WL violations
- Est. 2020 ad-valorem taxes: \$196.00

**Guy Hudson,
Owner**

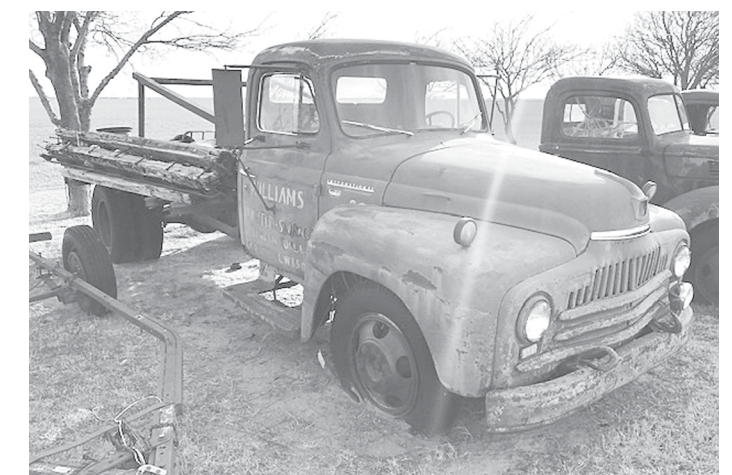


- 1-Lot of old trailer chassis, various makes, some antique
- 1-Automotive chassis converted into trailer w/large amount of barb wire on rolls
- 1-Portable Welder on SM SA trailer w/leads, 4 cyl. gas eng., maker unknown, very old
- 1-12' 8' custom mfg. wood Storage Building w/4' covered porch, electricity, AD, 6' walk in door
- 1-Woods 3 pt. Hydraboost, HD Utility Boom
- 1-Pair of 80" x 4" forklift Forks
- 1-Lot of Pamco Rain Handle Machines, various sizes, old
- 1-Aerometer windmill head, 55" fan blade, for parts/restoration
- 1-Lot of sled Go Devil Fenders
- 1-Lot of 16' x 52" HD Livestock wire Panels
- 1-XL lot of 1", 2", 1¼", 1½" Siphoning Tubes
- 1-Lot of Irrigation Ditch Stops, various sizes
- 1-1975 SW Pump station-type Gas Pump, mod. ETA-1, Gulf Oil Co.
- 1-22' x 7½' Storage Container, truck bed style
- 2-Loft-o-Matic automobile Car Lifts (some parts needed)
- 1-Several lots of short iron for scrap
- 1-Boardsmen 14' automobile oil changing Rack
- 1-Huge lot of Building Lumber, 2 x 4's, etc.
- 1-Lg. lot of 6' T-Posts (sold in bundles)
- 1-Lg. lot of 8' T-Posts (sold in bundles)
- 1-1500 gal. all metal diesel Storage Tank on skids w/Fill-Rite 115 volt AC, 15 gpm pump & series 8000 meter, filter, hose & nozzle
- 3-Overhead fuel storage tanks, 150-250 gallon
- 1-Lot of JD 9' x 3' bale wrap Spools (good for fence post)



VINTAGE AUTOMOBILES

- 1-1956 DeSoto Fireflite, 4-door hardtop, V8 Hemi standard trans. w/overdrive, radio, 12652.8 miles, VIN#9597. Sells with title
- 1-1964 Dodge 880, V8, push button automatic trans., 29751.9 miles. VIN#5243153884 Sells with title. For restoration
- 1-1947 Ford Club Coupe, 2-door, V8 eng., motor is locked, 3 spd. manual trans., 44,882 miles
- 1-1938 Dodge Bros. SA cab & chassis w/flathead motor & trans. For restoration
- 1-1949 Buick Eight super 4-dr. sedan, metal sun visor. For restoration
- 1-1963 Dodge "880" 4-door sedan, push button trans., V-8 eng.. Sells "as is" for restoration, No title





TRACTORS

- 1-2012 JD "8260R" cab diesel Tractor, front wheel assist, independent front end suspension, 16 spd., P/S trans., 3 pt., P.T.O., Cat III quick hitch, 4 hydr. outlets/3 return lines, 3786.6 hrs, AC, P.S., radio, 480/80R50 dual rubber (75%) rear, 420/85R34" front rubber (50%), weighted, elec. lift assistance switch, JD Star Fire 3000/Greenstat 3 RTK GPS system. SN#1203176
- 1-2012 JD "9410R" diesel cab Tractor, 18 spd. P/S trans., P.S., AC, air/ride hydr. seats, 2785.3 hrs., 4 hydr. outlets, 710/70R42" rubber (85-90% Michelin). Has 3000 hr. warranty with 214.7 hrs. remaining on warranty. JD Greenstar 3 monitor. SN#1237062
- 1-2012 JD "8235R" cab diesel Tractor, FWA, 4380 hrs, showing, P.S., AC, AM-FM/weather, JD Starfire 3000/Greenstar 3/RTK GPS system, 16 spd. power shift trans., 3 pt., P.T.O., 4 hydr. outlets, quick hitch, 480/80R50" rubber, duals (55%), electric lift assist switch. SN#1102858
- 1-Case "2090" cab diesel Tractor, AWF, P.S., AC, elec. seats, 3 pt., P.T.O., 2 hydr. outlets, 2456 hrs., 18.4R38" rubber (75%), weighted. Sells w/dual 350 hydr. FE Loader, 7' bucket and round bale spike
- 1-1981 Case "1175" diesel 451 Turbo diesel Tractor, AWF, 3 pt., P.T.O., DH, 18.4-38" rubber (40%) weighted, 7844 hrs, showing. SN#2385452
- 1-Case "1175" motor, trans., cab, tires & wheels for salvage (no front end) SN#2458436

COTTON • DIRT EQUIPMENT

- 1-20' x 8' all steel flatbed Cotton Trailer w/JD spring loaded chassis
- 1-24' x 8' x 8' all metal Cotton Trailer, wire mesh sides, Big 12 chassis
- 1-Johnson PT, HC Paddle Scraper, 7 yd. cap., mod. 80-0, 14.00-20" rubber, P.T.O. SN#8580



FARM MACHINERY

- 1-Krause "8200" HFW Tandem Disc, 33', 19½" front blades, 21¼" rear blades
- 2-Hamby 3 pt. 8-row double 4 x 4 Tool Bar Carriers, HFW, AGW's, 16" Lister bottoms w/1 x 3 shanks
- 1-JD "845" 3 pt. 8-row rolling Cultivator, AGW's, HFW, rolling fenders
- 1Lilliston 3 pt. 8-row rolling Cultivator, AGW's
- 1-Hamby 3 pt. triple 4 x 4 Tool Bar Carrier, HGW's, AGW's, 8-row rod weeder, stabilizer coulters
- 1-Hamby 3 pt. 8-row double 4 x 4 Tool Bar Carrier, HFW, AGW's, 28" sweeps w/ 1x3 shanks
- 1-JD "915" 3 pt. 7 trip shank Ripper, AGW's
- 1-Laney PT 13-shank ripper, double 8" x 8" frame, HC, brand new 385/65R22.5" rubber
- 1-Miller PT, HC, 16' Offset Disc, tandem gauge wheels, 21" rear blades, 21" front blades, double 3½" x 3½" bar
- 1-McFarlane PT, HFW, 47', 8-6" section spike flextooth Harrow, 5" spikes
- 1-JD "2410" PT, HFW Chisel Plow, 28 - 1¼" spring loaded shanks w/240 adj. 16" triple bar spring loaded harrow attachment, 16" sweeps
- 1-JD "2410" PT, HFW Chisel, 39 - 1¼" spring loaded shanks w/240 adj 16" triple bar spring loaded harrow attachment, 16" sweeps
- 1-Great Plains 40' PT Grain Drill, model "3S-4000HD-6375", Min-till folding drills, rubber press wheels. 7.5" DD
- 1-JD 400 3 pt. 8-row HFW Rotary Hoe
- 1-Yetter "3528" 3 pt. HFW 8-row Rotary Hoe
- 1-Krause 3 pt., 19-1" double spring shank Chisel Sweep Plow, double round bar, 8" spring loaded harrow attachment
- 1-Ford 3 pt. 2-16" Moldboard Plow w/steel tail wheel, series 101
- 1-Oliver PT 3-16" rollover Moldboard Plow, hand levers, rubber tail wheel
- 1-JD 3 pt. 2-16" rollover Moldboard Plow (older)
- 1-3 pt. 1-shank Ripper



- 2-Double 2¼" Tool Bar Carriers w/IHC 1¼" x 2½" straight shanks
- 1-3 pt. 2" x 2" Tool Bar Carrier, AGW's
- 1-2¾" x 2¾" Tool Bar, 10' joint
- 1-2" x 2" Tool Bar, 10' joint
- 1-MM 3 pt. 3-16" Moldboard Plow
- 1-Oliver 10' 3 pt. Tandem Disc, 16½" rear blades, 17" front blades
- 1-MM PT Irrigation Ditcher, steel wheels, steel seat
- 1-Dearborn mod. "10-1" 3 pt. 2-bottom Moldboard Plow
- 1-MM 2-bottom 3 pt. Moldboard Plow
- 1-Marvin's Little Shaver Land Plane, "103S-1350", 10' adj. hand crank blade, 6.00-16" rubber
- 1-Batchler HD all steel GN frame hitch
- 1-Lot of JD Flex Harrow sections, various sizes
- 1-Lot of Hay Spears (3 pt. attachment)
- 1-JD 10' Killifer, hydr. control, PT
- 1-Rhino "1540" 3 pt. HC 10' adj. blade
- 1-Sterling 10" GN hitch Soil Packer, 16 - 23" wheels, 7" spacing, 15" rubber
- 1-Graham PT triple beam, HC, 14-1" rigid shank Chisel Sweep Plow, buster bar, spring loaded harrow attachment, 15" rubber
- 1-Harrell mod. "2805" 3 pt. 5-bottom Switch Plow, adj. tail wheel
- 1-Bigham Bros. Paratill 4-shank Ripper/Hipper, 4-18" stalk cutter bed unit
- 1-Hamby 3 pt. 6-row triple 4 x 4 tool bar Sweepout Plow/Bedder, AGW's, 12" Lister points
- 1-Hamby 3 pt. double 4 x 4 tool bar Rotary Hoe, 6-row spring loaded Rotary Hoe
- 1-JD "RM" 6-row Cultivator
- 1-Hamby 7" x 4" Tool Bar Carrier, 3 pt. 8-row, HFW spring loaded Rotary Hoe
- 1-Lot of Mayrath seed wheat Augers, electric motors
- 1-Custom mfg. 13' extra HD Killifer w/8" extended all steel sides, HC, 11L-15" rubber (JD green)
- 1-Degelman mod. "LC-14" P.T.O. 15" Rock Rake
- 1-Degelman 5' P.T.O. PT Rock Picker
- 1-SM 3 pt. 6-row Stalk Cutter
- 1-JD 3 pt. 4-16" rollover Moldboard Plow, HC, AGW (older)

- 1-White 16' adj. Tandem Disc, dual gauge wheels, 16¾" rear blades, 10¼" front blades, HC
- 1-Hamby 4-4" x 4" Tool Bar Carrier, 3 pt., 6-row (bar only)
- 1-JD "CX20" 20' HFW, P.T.O. PT Shredder, air ride suspension, 26 x 9-14.5" 24 PR rubber
- 1-JD "845" 3 pt. 8-row Rolling Cultivator, HFW, AGW's, rolling fenders, spring loaded tine row units, adj.
- 1-JD "1710" 8-row Planter, hydr. markers, 3 pt., MaxEmerge Plus Vacumeter, HF, rubber press wheels, Schlegel wheel row unit attachments, new gauge depth wheels
- 1-Wylie 1000 gal. poly Nurse Tank on 4-wheel spring loaded chassis, Banjo pump, 2" plumbing, 11L-15" rubber
- 1-JD "8300" PT, HC 8" SD Grain Drill, drag chains, press wheels
- 1-Cimarron GN 250 bushel Grain Cart, hydr. 6" seed whet w/elec. toggle switch auger, divider, rollover tarp, tandem axle, 7.50-16" rubber
- 1-Ford 5' 3 pt. P.T.O. Shredder, solid rubber tail wheel
- 1-Krause 3 pt. 7' Oneway w/steel wheel, 20½" blades
- 1-Dearborn 3 pt. 2-row Lister Planter, galv. boxes, ground driven, good condition
- 1-IHC 3 pt. 2-row Lister Planter (old)
- 1-Oliver 9' HC Tandem Disc, 17" rear blades, 15" front blades, 15" rubber
- 1-Dual mod. "3100" hydr. FE Loader, 7' bucket
- 1-Massey Ferguson "1428V" hydrostat drive, FWA, 3 pt. P.T.O., 909 hrs., PS, diesel, roll over bar, turf-type, 13.6-16" rubber (90%)
- 1-Woods RD "7200" 6' 3 pt. P.T.O. Shredder, 4 solid rubber tires, gauge wheels 1
- Hamby 3 pt. 4-bar x 4" Tool Bar Carrier, 8-row AGW's, HFW's, 16" stalk cutter row units, 1 x 3 shanks w/sweeps, 8-20" double roller bed units, spring loaded
- 1-Woods S20CD 21' Flail Shredder, 3 pt., P.T.O.

PICKUPS • TRUCKS

- 1-International Loadstar "1700" SA Grain Truck, LP system, auto. trans., 61,354 miles, single cyl. hoist, 16' all steel bed, 42½" metal sides SN#H892437
- 1-2001 Chevrolet "C7500" Grain Truck, SA, 6 spd. trans., PS, AC, AM-FM, single hoist, 18' all steel grain bed, 52" metal sides, Shur-Lok rollover tarp, 11R/22.5" rubber, Caterpillar 3126 diesel 230 HP engine, VIN#J503389
- 1-1952 International "L-160" series SA Grain Truck, 4/2 spd. trans., 13' Giant grain bed, wood floor, 36" wood sides, single hoist lift, 6 cyl. eng., 8.25-20" rubber, 26,124 actual miles



- 1-1941 Ford Truck, SA cab & chassis, V8 motor, trans., for restoration. No title
- 1-International "L160" SA Truck cab & chassis, 4 spd./2 spd. trans., 8.25-20" rubber, for restoration. No title
- 1-1972 Dodge 100 LWB Pickup, V8 eng., auto. trans., radio, AC, 72,088 miles showing, sells w/title. VIN#00133659
- 1-2013 GMC "3500" HD, LWB, DuraMax 6.6 diesel eng., Allison trans., power windows/doors, AC, 95,172 miles, 1 owner, 256/70R18" rubber (90%). VIN#F229879
Sells with Dew Eze mod. "675" hydr. bale bed, tool box, GN hitch

ANTIQUES

- 1-MW 11' x 5' solid steel Grain Trailer, tandem floating axles, 6.00-16" rubber
- 1-HD 9' PT Killifer, HD, ball hitch, 10" steel spoked wheels
- 1-Dearborn 3 pt. 11-shank Cultivator
- 1-Emerson horse drawn 6' LC Grain Drill, 8" SD, 8" spacing
- 1-Lot of Farm Implements, various makes
- 1-Coca Cola refrigerated chest type Pop Box, drinking fountain, 40" x 25" removable doors
- 1-Philco mod. 39-25 wood cabinet style Radio
- 2-Ford 8N gas UtiCCC
- 1-"F12" IHC Tractor, tricycle front end, , P.T.O., 11-40" rubber, for restoration
- 1-Cockshut model "40" row crop gasoline Tractor tricycle F.W., 3 pt. P.T.O. 12.4-38" rubber, draw bar w/LP regulator
- 1-Lot of Funnels & Gas Cans
- 1-Lot of Automobile Car Tags
- 1-Lot of Delaval Cream Separators
- 1-Lot of Tailgates for Pickups
- 1-Reel Push Mower, steel wheels, wood handles
- 1-Set of Hansen Cotton Scales
- 1-Lg. lot of Cream Cans, various makes
- 1-75" x 28" x 27" Dairy Barn chest type Cooler for block ice, two 27" folding doors (very old)
- 1-Small table mount hand crank Grinder, 4" stone
- 1-Coats Tireman model "3-ST" Tire Changing Machine w/tire tools
- 1-53" wooden Spoke Wagon Wheel
- 1-Lot of Steel Wagon Wheels & Rims
- 1-Ford 60 HP gas engine w/manual transmission



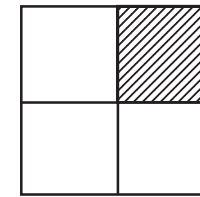
GRASSHOPPER • KUBOTA TRAILERS

- 1-Grasshopper "725D" diesel Lawnmower, 61" power fold deck, 425 hrs., slick
- 1-Kubota diesel 4 x 4, 9TV900XT, lift bed, PS, 907.8 hours (like new)
- 1-SM HD gooseneck 20' x 8' tandem axle flatbed Trailer, wood floor, LT215/R16" rubber, loading ramps
- 1-14' x 8' all steel flatbed Trailer, JD chassis
- 1-SM SA, PG 12' x 4' Trailer w/sheet metal, round wood posts & angle iron (sold as 1 package)
- 1-SM 10' x 5' SA Trailer, dump bed, wood floor (needs repair)
- 1-Batchler pick-up Trailer, tandem dual axle
- 1-Custom mfg. 6 1/2' x 12' SA Utility Trailer, wood floor, ball hitch, 2' fold down loading ramps, 225/75R15" rubber
- 1-SM 10' x 5' SA metal frame Livestock Trailer, wood sides & floor, ball hitch, 5' sides (needs repairs)
- 1-18' x 38" SA truck/trailer chassis, front & rear leaf springs, PH, 7.00-20" dual rubber
- 1-Ford SWB utility pickup bed Trailer, PH

TANKS • UNCLASSIFIED

- 1-200 WP 150 gal. round LP Tank
- 1-500 gal. LP Tank, 200 WP, mounted on JD spring loaded 4-wheel trailer, chassis, pin hitch
- 1-Auto. 3/4 ton chassis w/all steel 500 gal. diesel tank w/9' bed, 6' all metal walkboards, hand fuel pump, pin hitch
- 1-Lg. lot of 17' x 28" Corrugated Tin
- 1-Lg lot of 11' x 26" 9-ribbed Corrugated Tin (sold in bundles)
- 1-Lot of all steel Cotton Row Bullets
- 1-Lg. lot of Implement & Auto Tires, all sizes
- 1-Lg. lot of Tractor Tires, various sizes/makes

TRACT #5 • 160 ACRES ±



LEGAL DESCRIPTION:
NE 1/4 - 17 - 3N 20 WIM
Consisting of 160 ± acres,
less 9.45 acres for the Lugert/
Altus Irrigation Canal
Jackson County, OK

LOCATION: From Tract #1 travel 1 3/4 mile West on ECR 160 then 2 1/2 miles North on CRNS 205 or across the road catty corner from Tract #4.

JACKSON COUNTY FSA 156EZ INFO:

- Farm #7042 • Tract #294
- 154.69 Acres Cropland, classed as NHEL
- DCP Cropland 154.69

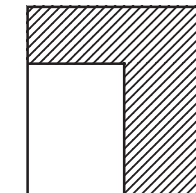
DCP CROP DATA

	Base Acres	PLC Yield
Wheat	152.2	36 bu.

- Tract does not contain wetland
- No WL violations
- WF/sheet metal round top barn
- Electric power line runs through farm from the NE to the SW corner
- Est. 2020 ad-valorem taxes: \$463.00

TRACT #6 • 100.48 ACRES ±

LEGAL DESCRIPTION:
SW 1/4 - 7 - 3N 20 WIM
Consisting of 100.48 ± acres,
less 53 acres in SW corner
Jackson County, OK



LOCATION: Travel 3 miles North of the Altus Municipal Airport on Hwy. 283 then 1/2 mile West on ECR 157 (watch for signs)

JACKSON COUNTY FSA 156EZ INFO:

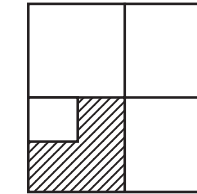
- Farm #7042 • Tract #362
- 97.06 Acres Cropland, classed as HEL
- DCP Cropland 97.06

DCP CROP DATA

	Base Acres	PLC Yield
Wheat	45.20	36 bu.
Seed Cotton	14.80	2383 lbs. (lint & seed)

- Tract does not contain wetland
- No WL violations
- Altus/Lugert Irrigation Canal runs through NW quadrant of the farm
- Est. 2020 ad-valorem taxes: \$201.00

TRACT #7 • 139.86 ACRES ± IRRIGATED



LEGAL DESCRIPTION:
SW 1/4 less NW 1/4 -
NW 1/4 - 11 - 3N 21 WIM
Consisting of 139.86 Acres ±
Jackson County, OK

LOCATION: From Martha, OK, travel 1 mile North on CRNS 201. Martha, OK is located 6 miles North of Altus, OK on Hwy. 283, then 3 miles West on ECR 158.

JACKSON COUNTY FSA 156EZ INFO:

- Farm #7042 • Tract #11024
- 135.91 Acres Cropland, classed as NHEL
- DCP Cropland

DCP CROP DATA

	Base Acres	PLC Yield
Wheat	17.20	36 bu.
Seed Cotton	113.60	2383 lbs. (lint & seed)

- Wetland determinations not complete
- No WL violations
- 117.94 acres irrigatable
- Lateral irrigation canal runs along West side of irrig. land
- 2 underground drainage pipes located on this farm
- Possession at closing
- Est. 2020 ad-valorem taxes: \$440.00

REAL ESTATE TERMS

10% placed in escrow on each tract with Mark T. Coke, attorney for seller; balance due in 30 days.

TAXES: Prorate 2020 ad-valorem taxes to day of closing.

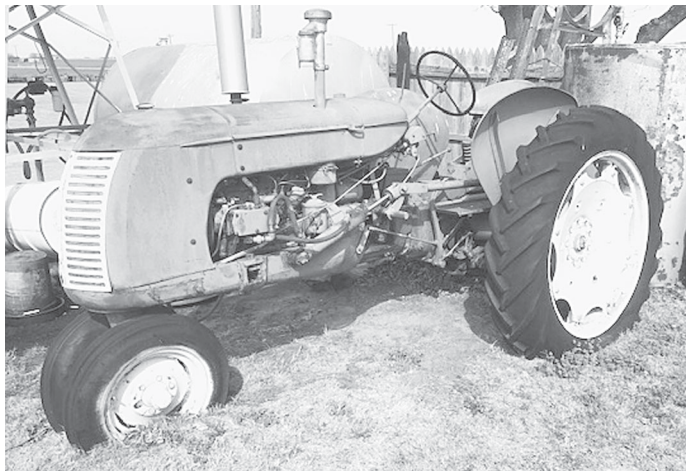
POSSESSION: Possession will be given on Tract #7 at closing. All other tracts will be given after the completion of wheat harvest or condemnation. Selling each tract subject to any existing easements which may be of record. All tracts sold in "as is" condition.

MARKETABLE ABSTRACT: Seller to furnish marketable abstract on each tract.

SURVEY: If a survey is required by the Buyer or the Lender, the cost shall be paid for by the Buyer.

MINERALS: Announced day of sale.

CLOSING: All tracts will be closed at the law office of Mark T. Coke, attorney for seller, 205 W. Cypress St., Altus, OK, 580/482-5474.



SHOP TOOLS • UNCLASSIFIED

1-Gas powered Fire Ball Grease Dispensers
 1-Lot of portable Air Compressors (2 & 3 HP engines, elec.)
 1 x 3 Shanks • Plow Points • Tool Bar Makeups
 Funnels • Old Gas Cans • Oil Squirt Cans • Tool Boxes • Grease Guns • Galv. Metal Tubs • Plow Points • Adj. Mirrors • Buggy Top Shades • 4 x 4 Spacers • 4 x 4 Clamps • Box Blade Ripper Shanks
 Door Hinges • Rod Weeder Parts • Case 3 pt. Center Links • Tractor fender mount Radios
 Portable Air Tanks • Hydraulic Jacks • Handyman Jacks • Car Ramps • Car Stands • Hydr. Cylinders
 Plow Wrenches • 3 pt. Hitches • 4 x 4 Bar Shovels • Rakes • Hoes • Log Chains • Boomers

Vises • Lincoln Cracker Box AC/DC Welder
 Dollies • Cutting Torch: Bottle, Gauges • Pipe Wrenches • Open/Box end Wrenches • Sockets
 Hammers • Sledge Hammers • Crescent Wrenches • Bearing Pullers • Portable Battery Charger • JD AC1 100 PSI port. Air Compressor
 Lubricants • Chop Saws • Bow Saws • Welding Rod • Welding Helmets • Lug Wrenches • Husky Pro 60 gal. comm. 3.2 HP motor, 135 PSI Air Compressor w/hose & reel • Carolina Press w/20 ton hydr. jack #CP-100 • Shop Tables, metal & steel (various sizes) • 2-Wood 108 compartment Nut/Bolt Storage Bins, 11' x 7¼' • Lantz apartment size Refrigerator

TERMS: Credit Card, Check or Certified Funds with proper ID. **NO BUYERS PREMIUM.** Full settlement day of auction. Dealers, please bring a copy of your resale tax number or sales tax will be collected. Brink Auction Service assumes no liability on any item that has a title; buyer/seller assumes all responsibility. Any announcement made day of auction shall supersede any previous advertisement or statement and prevail as the final terms and conditions. Bank letter of credit required by Brink Auction Service for all first time buyers before registering. All information on listed items was taken by the owners and auction personnel from what they believe were reliable sources. However, this brochure is for reference only, and all buyers should inspect and make their own determination as to age and condition before bidding. All items sell as is, where is, without warranty or condition.

Brink
 Auction Service
 P.O. Box 928
 Frederick, Oklahoma 73542

RETURN SERVICE REQUESTED

2 Day RETIREMENT AUCTION

Day 1: Friday, April 17, 2020 • 10:15 a.m.

Selling 794 acres ± Land

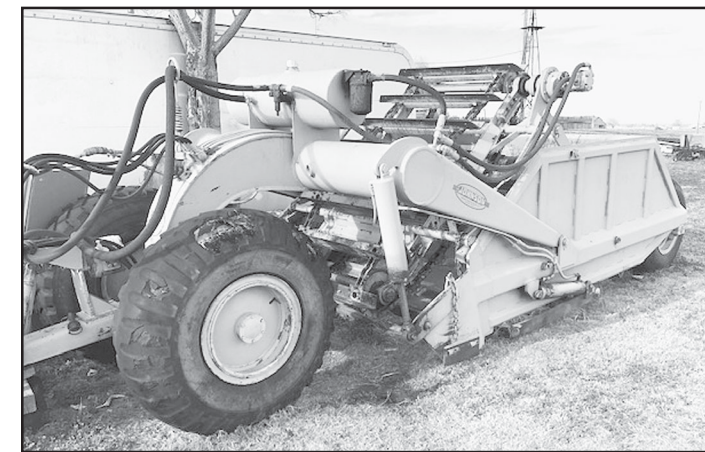
Day 2: Saturday, April 18, 2020 • 9:15 a.m.

Farm Equipment, Antique Tractors, Automobiles, Shop Equipment, Tractors, etc.

AUCTION LOCATION:

From the Altus Municipal Airport North of Altus, OK on Hwy. 283, travel 2¾ miles East on ECR 160 (watch for signs)

NOTE: All tracts of land & equipment will be sold from this location



Mexican Food & Refreshments available by Fountain of Salvation Church - Olustee, OK

AUCTIONEER'S NOTE: Exceptionally nice, clean set of farm equipment, several old vintage automobiles, trucks and tractors, along with a host of days-gone-by farm related collectibles. Also 7 very nice tracts of Jackson County farms will be sold. Your attendance will be appreciated by the Guy Hudson family and Brink Auction Service.

Guy Hudson, Owner

TERRY H. BRINK
 CAI Auctioneer/Real Estate Broker
 Frederick, Oklahoma 73542
 580/335-4126
 TXS Auct. Lic. #OKS-118-006033
 E-mail: brinkauction@gmail.com



(Announcements day of sale supersede all other advertising)

TONY TALLANT, Auctioneer
 TX Lic. #11052 - 940/839-9913
 Txs. Auct. Lic. #11052
JOHN D. BUTCHEE, Auctioneer
 TX Lic. #17755 - 580/471-7937
LISA SANMANN, Clerk
ELLEN L. BRINK, Cashier

For more info. and pictures, visit our website at www.brinkauction.com