

Name \_\_\_\_\_

period \_\_\_\_\_

Date \_\_\_\_\_

Write your notes  
about what you are  
reading in this space.

## Science Shorts -8

### Biomes

Large areas on the earth that have the same kind of physical environment and the same kinds of plants are called biomes. The physical environment determines the kinds of plants that can grow in a biome. There characteristic plants are called climax plants. The kinds of animals in a biome depend on the kinds of plants. The table below describes six major biomes.

A biome is a large geographical area of distinctive plant and animal groups, which are adapted to that particular environment. The climate and geography of the region determines what type of biome can exist in that region. Major biomes include deserts, forests, grasslands, tundra and several types of aquatic environments. Each biome consists of many ecosystems whose communities have adapted to the small differences in climate and the environment inside the biome.

All living things are closely related to their environment. Any change in one part of the environment, like an increase or decrease of a species of animal or plant, causes a ripple effect of change in other parts of the environment.

The earth includes a huge variety of living things, from complex plants and animals to very simple, one-celled organisms. But large or small, simple or complex, no organism lives alone. Each depends in some way on other living and nonliving things in its surroundings.

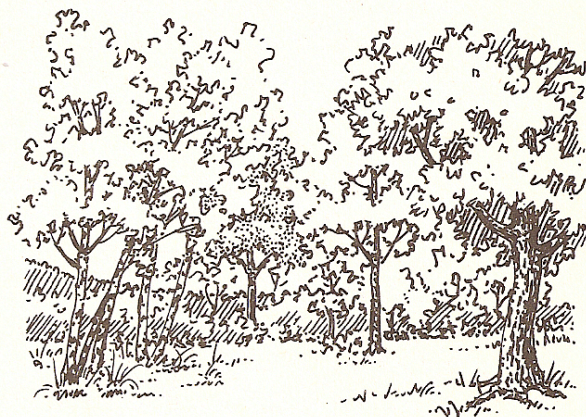
Biome and its locations	Physical Environment	Climax Plants	Some Animals
<b>Tundra</b> Arctic region	Little sun and rain (or snow) long cold winters	Lichens and mosses	Reindeer, Arctic foxes
<b>Coniferous Forest</b> Between Arctic and temperate	More sun and rain than Arctic. Winters shorter than deciduous	Pine trees, firs, spruce (evergreens)	Moose, lynx, black bear
<b>Deciduous Forest</b> temperate region	More sun and rain than coniferous	Maple trees (lose their leaves in the fall)	Deer, blue jays squirrels
<b>Tropical Rain forest</b> near equator	Much sun and much rain Warm all year around	Many trees, vines, orchids	Monkeys, insects, reptiles, birds
<b>Grassland</b> temperate region	Amount of sun varies: Little rain; cold winters, Warm summers	Grasses	Bison, antelope, Prairie dogs
<b>Desert</b> Regions of little rainfall	Much sun and very little Rain. Hot summer, Moderate winter	Cactus, sagebrushes	Kangaroo rats, owls roadrunners



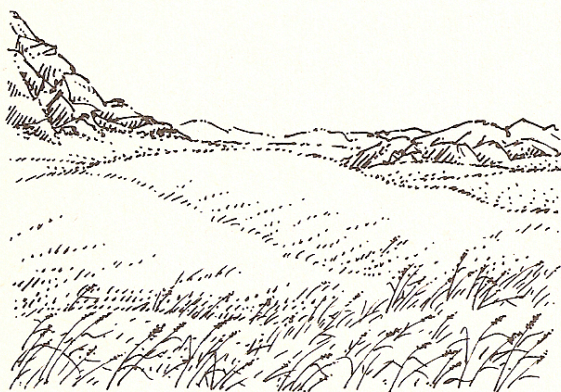
A. On the line below each diagram, write the name of the biome shown. Use the names of biomes and information in the table in Facts and Ideas.



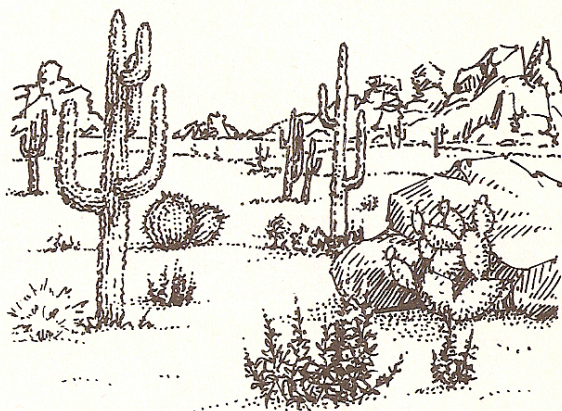
1. \_\_\_\_\_



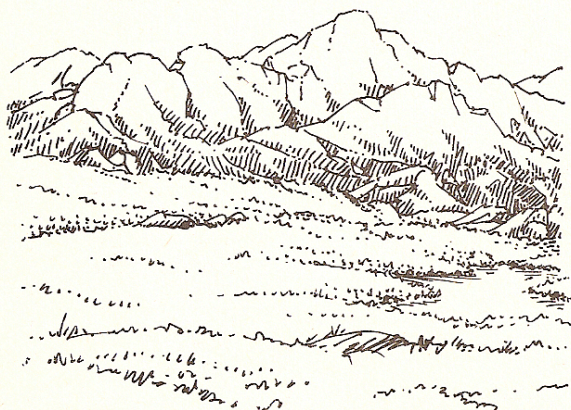
2. \_\_\_\_\_



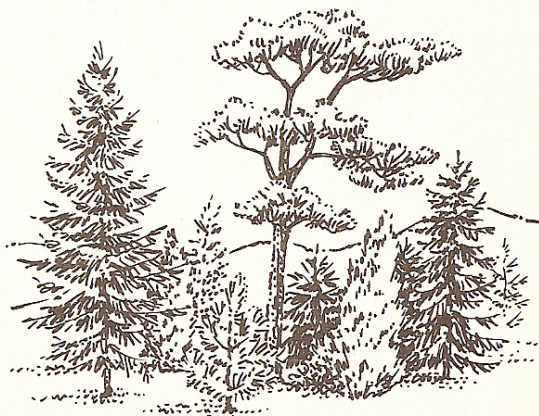
3. \_\_\_\_\_



4. \_\_\_\_\_



5. \_\_\_\_\_



6. \_\_\_\_\_