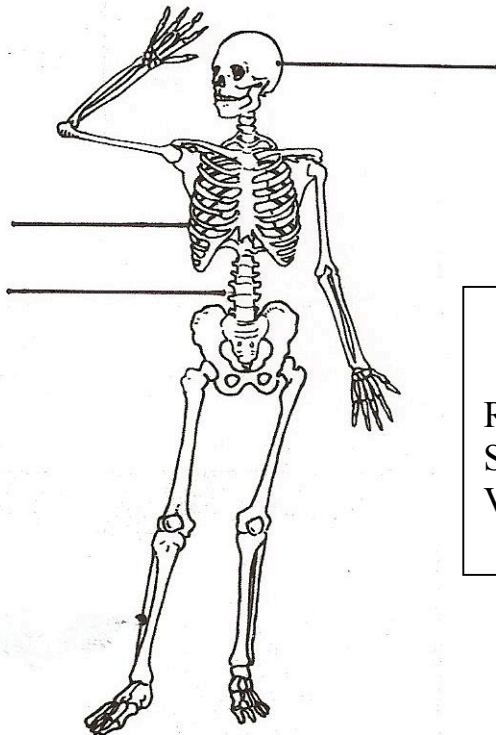


Kingdom Animalia – Vertebrates

Animals are classified into two major groups according to one characteristic. One group is made up of animals with backbones. Animals with backbones are called vertebrates. The backbone protects the spinal cord and gives support to the body. There are five groups of vertebrates. They are the fish, amphibians, reptiles, birds and mammals.

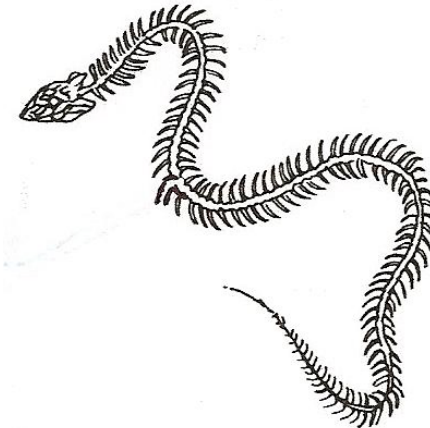
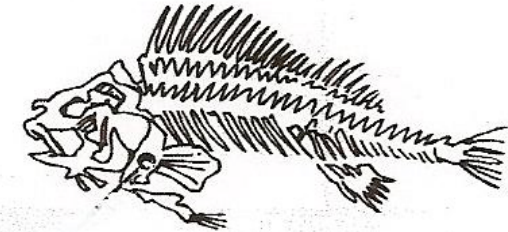
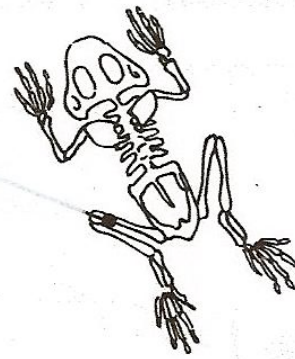
What To Do:

1. Label the bones indicated below. Use the word bank to spell them correctly.



Word Bank

Ribs
Skull
Vertebral Column



2. Observe the skeletons of each type of vertebrate animal.
3. Find and label the skull, ribs and vertebral column in each picture.



Watch the video “*Phylum of Chordates*” from www.missdoctorbailer.com and write down one thing about each class of animals below as you watch.

Cartilage Fish

Bony Fish

Amphibians

Reptiles

Birds

Mammals

Materials: Vertebrate Cards and Classification titles

What To Do:

1. Find the bag with the vertebrate cards and titles.
2. Place the titles in a row across your table.
3. Use your knowledge to determine into which group the animals belong.
4. Write your answers below.

Vertebrates

Class	Examples
Fish	
Amphibians	



Class	Examples
Reptiles	
Birds	
Mammals	

Questions:

1. What characteristic do all these animals have in common?

2. What characteristics do fish have? _____

3. What characteristics do birds have? _____

4. What characteristics do mammals have? _____



Name _____ period _____

EXIT TICKET

Vertebrates

1. An animal breathes oxygen, is warm-blooded and has feathers. What class of animal is it?
 - A. Bird
 - B. Mammal
 - C. Reptile
2. An animal has dry scaly skin, a backbone and lives on the land. What class of animal is it?
 - A. Mammal
 - B. Bird
 - C. Reptile
3. What characteristic is used to classify snakes into a different phylum than the earthworm, sea star and spider?
 - A. Snakes live on land.
 - B. Snakes have a backbone.
 - C. Snakes breath oxygen.
4. What does vertebrate mean?
 - A. Without a backbone
 - B. With a backbone
 - C. Wanting a backbone



Name _____ period _____

EXIT TICKET

Vertebrates

1. What characteristic is used to classify snakes into a different phylum than the earthworm, sea star and spider?
 - A. Snakes live on land.
 - B. Snakes have a backbone.
 - C. Snakes breath oxygen.
2. What does vertebrate mean?
 - A. Without a backbone
 - B. With a backbone
 - C. Wanting a backbone
3. An animal breathes oxygen, is warm-blooded and has feathers. What class of animal is it?
 - A. Bird
 - B. Mammal
 - C. Reptile
4. An animal has dry scaly skin, a backbone and lives on the land. What class of animal is it?
 - A. Mammal
 - B. Bird
 - C. Reptile