



TOTAL PRO SOCCER

PLAYER PATHWAY PROGRAMME

IN PARTNERSHIP WITH



**Cabot
Learning
Federation**

SENIOR STAFF

KATH COOPER - CLF POST 16 PRINCIPAL

“Here at CLF Post 16, we are an Academy that values the diversity of our rich community, and expects the highest of standards for you and our staff body. The unwavering ambition we hold is for you to flourish during your time of study with us, access an exciting and enriched experience, develop a resilience to learning, and become inspiring citizens of tomorrow. I believe the aspiration we have for you to achieve your full potential, prepare for your future and expose new opportunities will support you fully in your journey of growth and personal development”.



ASHLEY MORGAN - TPS CO-FOUNDER & FOOTBALL PROGRAMME DIRECTOR

Ashley is a UEFA B Licence qualified coach with a wealth of experience coaching in professional football academies, specialising in individual player technical development. Ashley has been integral to the creation and development of the Total Pro Soccer post 16 football programme over the past 10 years.



MARVIN BROWN - TPS CO-FOUNDER & FOOTBALL PROGRAMME DIRECTOR

Marvin is a UEFA A Licence qualified coach, graduate of the Premier League Elite Coach Apprenticeship Scheme and has years of experience coaching in professional academies. Marvin became the youngest player in the Bristol City FCs history to make a first team appearance, aged just 16 years and 71 days (a record that still stands) and represented England schoolboys U15-U18.



ABOUT US

Total Pro Soccer has specialised in post 16 Talent Identification & Player Development since 2012, supporting student athletes to fulfil both their academic and footballing potential.

We have a team of experienced A/B Licence coaches who share our mission to support all of the players within our programme to fulfil their potential. Our coaching team come from professional academy coaching and professional playing backgrounds, including the following clubs...



SOUTHAMPTON



BRISTOL ROVERS



NEWPORT COUNTY



BRISTOL CITY



SWINDON TOWN

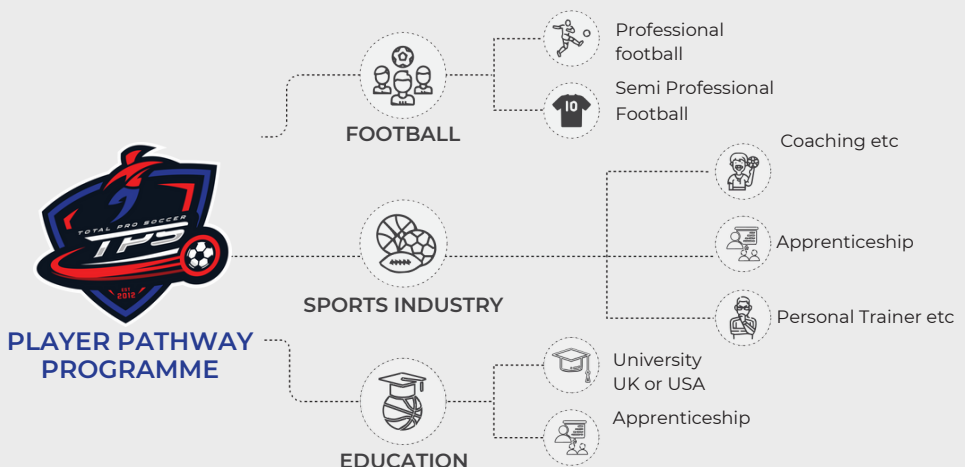


FOREST GREEN ROVERS

PATHWAY

The Total Pro Soccer Player Pathway Programme is designed to:

- Enhance students post 16 experience by delivering a professional, fun and engaging football environment.
- Identify and nurture young football talent for professional football clubs.
- Pave an alternative pathway to semi-professional football or scholarships in the USA.
- Guide students toward diverse sports industry careers such as Sports Coaching, Personal Training, Sports Therapy, Media, Business and more.
- Create a solid academic route to higher education at university.



PLAYER PATHWAY PROGRAMME

To ensure inclusivity for players of all abilities, we run "Performance" and "Recreational" squads. Regular player assessments ensure players train with (and play against) others with similar abilities, providing an appropriate balance of support and challenge.

Alongside the football development programme, students can select from a number of subject choices, inc (but not limited to) Level 2/3 Sport, Personal Training, Business, Maths, English, Criminology, Digital Media and Psychology.

Total Pro Soccer's recent Level 3 Sport cohort achieved grades within the top 10% nationally, proving a commitment to academic excellence.

With a staff of UEFA A/B coaches, GK specialists and strength and conditioning experts, students receive an unparalleled support network.

OVERVIEW

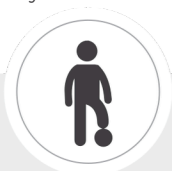
- » 2/3 sessions per week
- » Competitive and Recreational squads
- » Technical and tactical focused training
- » Goalkeeper specific training
- » Strength & Conditioning specialist support
- » England colleges leagues and cup fixtures
- » Select squad fixtures
- » Training kit pack
- » Video analysis (Veo technology)
- » Ability to continue playing for your grassroots team

ASSESSMENT

The various academic courses are delivered and assessed in a variety of ways, including exams, verbal assessments, written reports, presentations and practical observations etc.

ENTRY REQUIREMENTS

To be best suited for a level 3 course, you will require five GCSEs at grade 4-9, however there may be some flexibility if GCSE results are close to five at grade 4+.



FOOTBALL SESSIONS
2-4 PER WEEK



EQUIVALENT TO
3 A-LEVELS



EDUCATION TIME
12 HOURS

COMPETITIONS WE COMPETE IN



SELECT SQUAD FIXTURES

AOC LEAGUES AND CUPS



FA CUP



FA VASE CUP

FA YOUTH CUP



ENGLAND COLLEGES FA



PAID 1st TEAM FOOTBALL

SELECT SQUAD FIXTURES

Our Select Squad Fixtures vs professional football clubs provide our best performing players with regular opportunities to compete against professional/academy players and showcase their talents in front of their coaches and scouts.

Some of the clubs we have played and fixtures we have coming up include:



CORSHAM TOWN FC

Total Pro Soccer have partnered with Corsham Town FC to provide paid semi professional 1st team football opportunities for our young talented players.

Total Pro Soccer coaching staff manage Corsham Town FC 1st team who compete in the Hellenic Premier League, FA Cup and FA Vase.

With a team of players aged just 16-22 we have by far the lowest average player age in the league, remaining consistent in our mission to develop and progress young footballers.

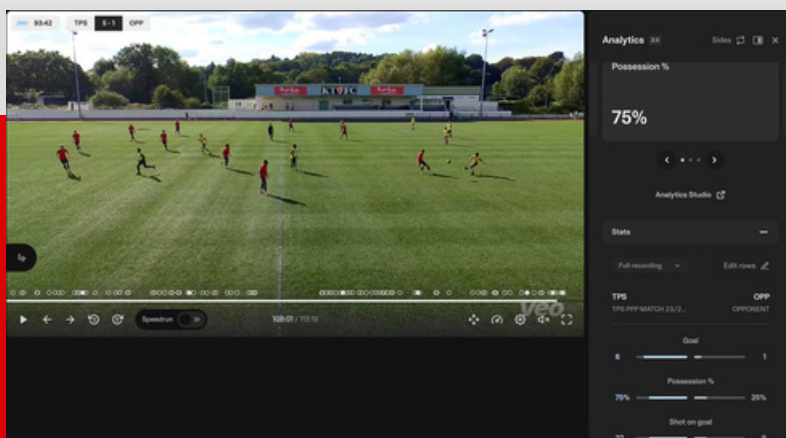
We play an attractive possession dominant style of football, resulting in multiple professional academies offering to send their scholars and young pros to us to support their development.

Many of our players attract lots of attention, receive offers and progress on to teams in higher leagues.



TRAINING/MATCH ANALYSIS

A crucial part of your development as an athlete is the ability to evaluate and improve on your performance from match to match and training session to training session. Video is an essential tool for self evaluation. To analyse training and matches we use the state of the art "Veo" recording camera and platform, that utilises its highly intelligent software to recognise the action on the field. With the position of players and the ball, the software creates a video that automatically zooms and pans depending on the ball's position.



PLAYER PATHWAY EDUCATION

L2/3 Sport:

Students study 14 units of which the following 10 units are mandatory for L3 Sport...

SPORT

- » Anatomy and Physiology
- » Fitness Training and Programming
- » Professional Development in the Sports Industry
- » Sport Leadership
- » Practical Sports Performance
- » Coaching for Performance
- » Research Methods in Sport
- » Development and Provision of Sport
- » Investigating Business in Sport
- » Skill Acquisition

Open Study:

At CLF Post 16 we offer a wide range of course options to suit your own individual needs. These include the established A levels courses, and BTEC and Cambridge Technical options, as well as Specialised Vocational Pathways.

STUDY OPTIONS

- » Applied Science, Art & Design
- » Biology, Business Studies
- » Chemistry, Computer Science, Core Maths, Criminology
- » Digital, Drama & Theatre Studies
- » Economics, Engineering, English
- » Functional Skills English/Maths, Further Maths
- » Geography, Health & Social Care
- » History, Information Technology
- » Performing Arts, Photography, physics Product Design
- » Psychology, Religion Ethics & Philosophy, Sociology

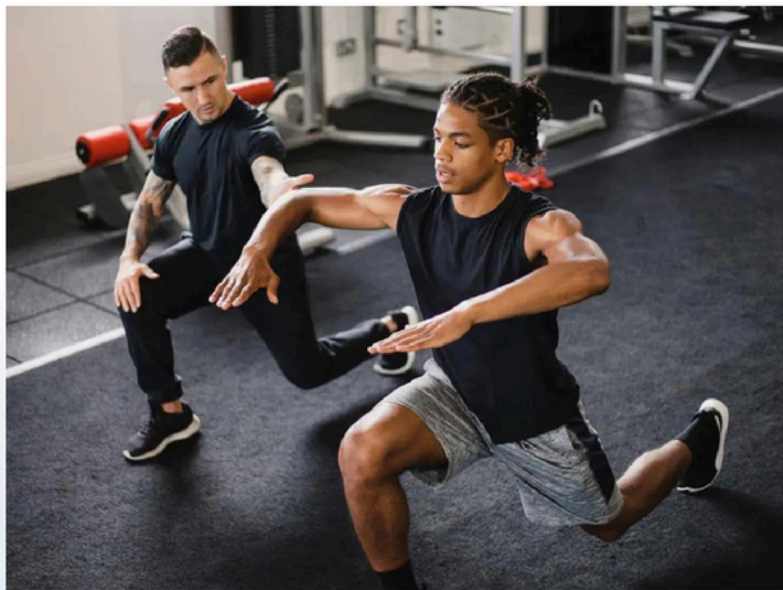
PLAYER PATHWAY EDUCATION

L3 Diploma in Personal Training Units:

This is a 1 year course (mainly for year 14 students) where students will become a qualified personal trainer after successfully completing the following mandatory units...

L3 PT

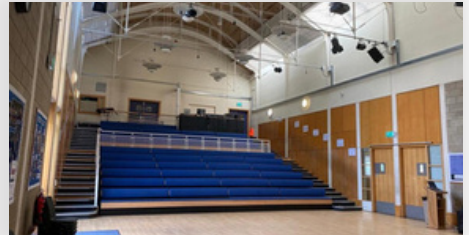
- ▶ Anatomy and Physiology for Exercise
- ▶ Maximising the Customer Experience in a Gym Environment
- ▶ Conducting Client Consultations and Gym Inductions
- ▶ Planning and Reviewing Gym-Based Exercise Programmes
- ▶ Instructing and Supervising Gym-Based Exercise Programmes
- ▶ Client Motivation and Lifestyle Management
- ▶ Programming Personal Training Sessions
- ▶ Delivering Personal Training Sessions
- ▶ Nutrition to Support a Physical Activity Programme
- ▶ Business Acumen for Personal Trainers



VENUE - Cabot Learning Federation Post 16



Cabot
Learning
Federation



**Woodside Road
Kingswood
Bristol
BS15 8BD**

FIND OUT MORE

Contact us to find out more information about the programme via:



admin@totalprosoccer.com



ASHLEY MORGAN

07814662591

FOOTBALL PROGRAMME DIRECTOR



WWW.TOTALPROSOCCER.COM

**APPLY
HERE**



**APPLY
HERE**