

GROUNDING

DR MARIA ASPROGERAKAS



GOAL

- To think outside the box from accepted concepts
- To understand the hierarchy of vision as not only a flat four circle integration
- To consider the other issues present when working with various conditions
- To consider the brain and mind black box

TREATMENT GOALS

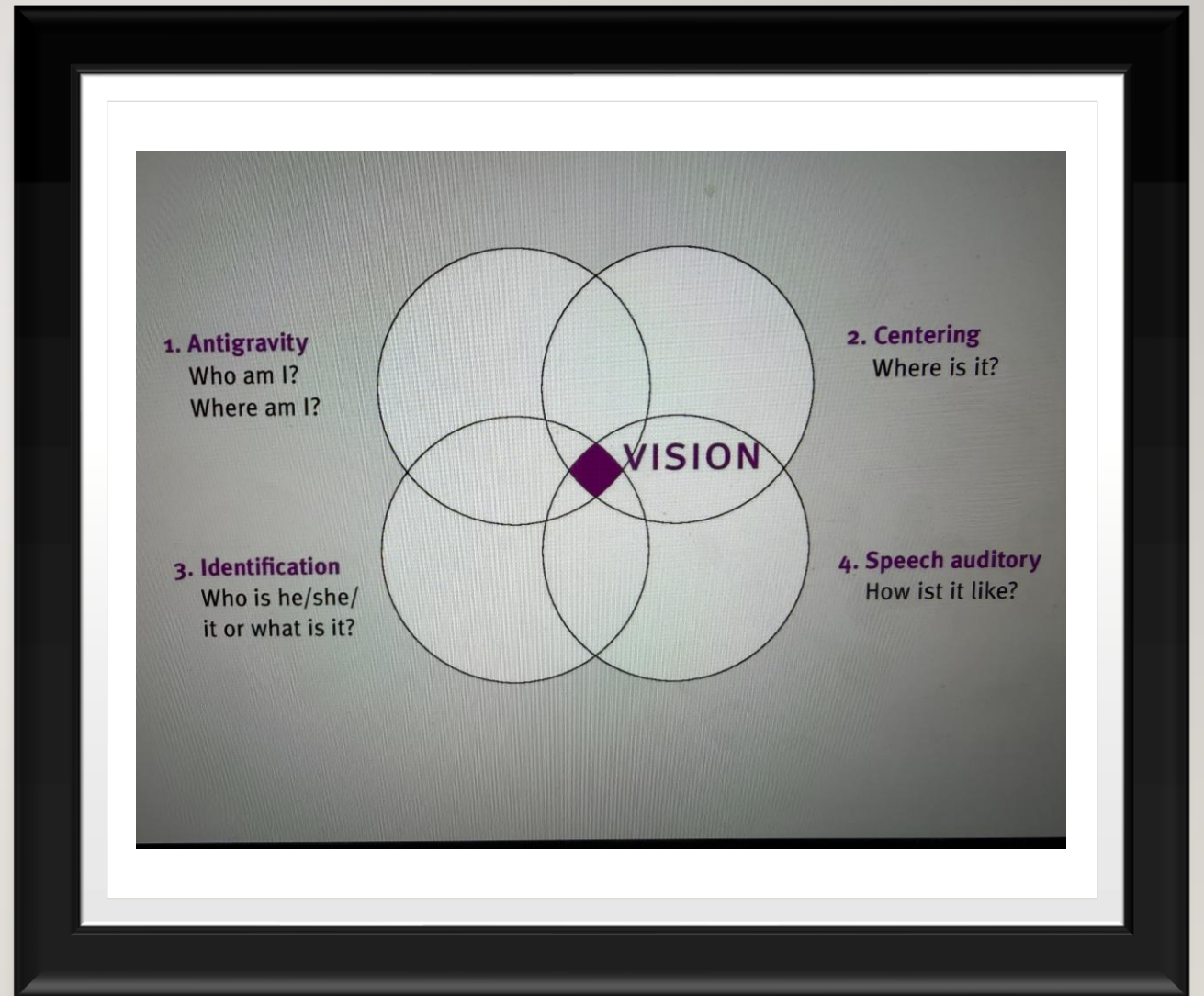
- Normalize findings in analytical
- Decrease symptomology
- Align eyes mechanically
- Achieve clear single binocularity
- Help patient function in everyday activities
- Achieve optimal stereopsis
- Rehabilitate to functioning visual system

INTEGRATION

- Consistent integration
- Biofeedback correction loop within body
- The importance is not what is in the four circles or how well they function but the overlap and the integrational skills.
- The integration and the looping back to the black box is the consistent correcting system within the body .

LOOPING

- Antigravity
- Centering
- Identification
- Speech auditory



ANTIGRAVITY

- This is the who am I and where am I
- This we shall refer to as the Gestalt or the Nous of the person since it deals with the personal existence and the primary position of vision if you may
- This needs a fully working system

CENTERING

- This is the where is it
- Locational skills from primary position
- This begins with the Nous and pulls it out to the environment

IDENTIFICATION

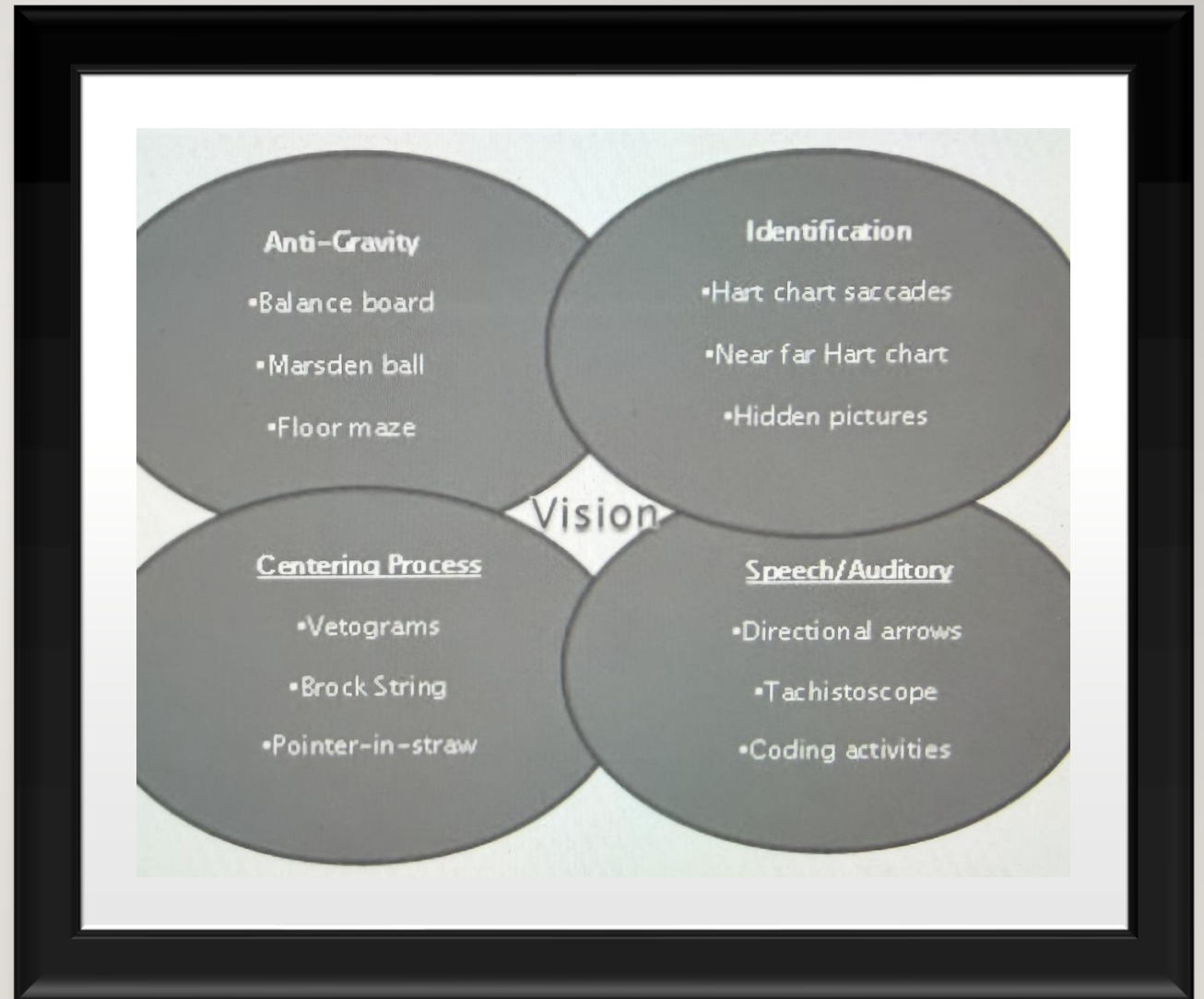
- This is the who is it or what is it
- This incorporates knowledge and experience to recognize and classify the item in the environment
- This is the Nous being worked to recognize

SPEECH AUDITORY

- This is the what is it like
- This uses the body's senses to understand what it is
- This is the first biofeedback loop in the system

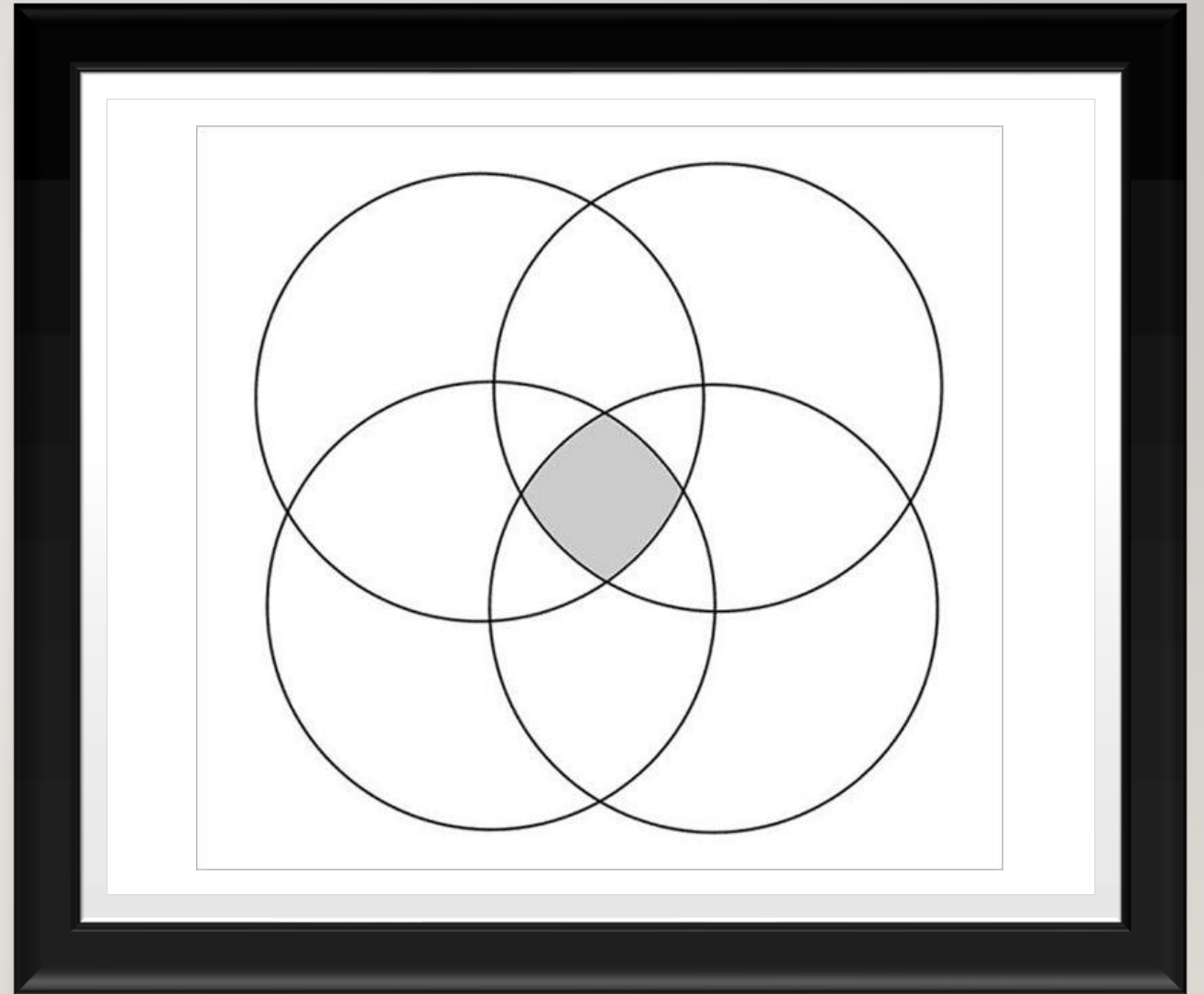
REHAB

- Vision therapy techniques and procedures used to aid the system and attempt to help an ailing system.



WHAT IF WE CHANGE WHAT WE KNOW TO

- What if we change this to levels of hierarchy

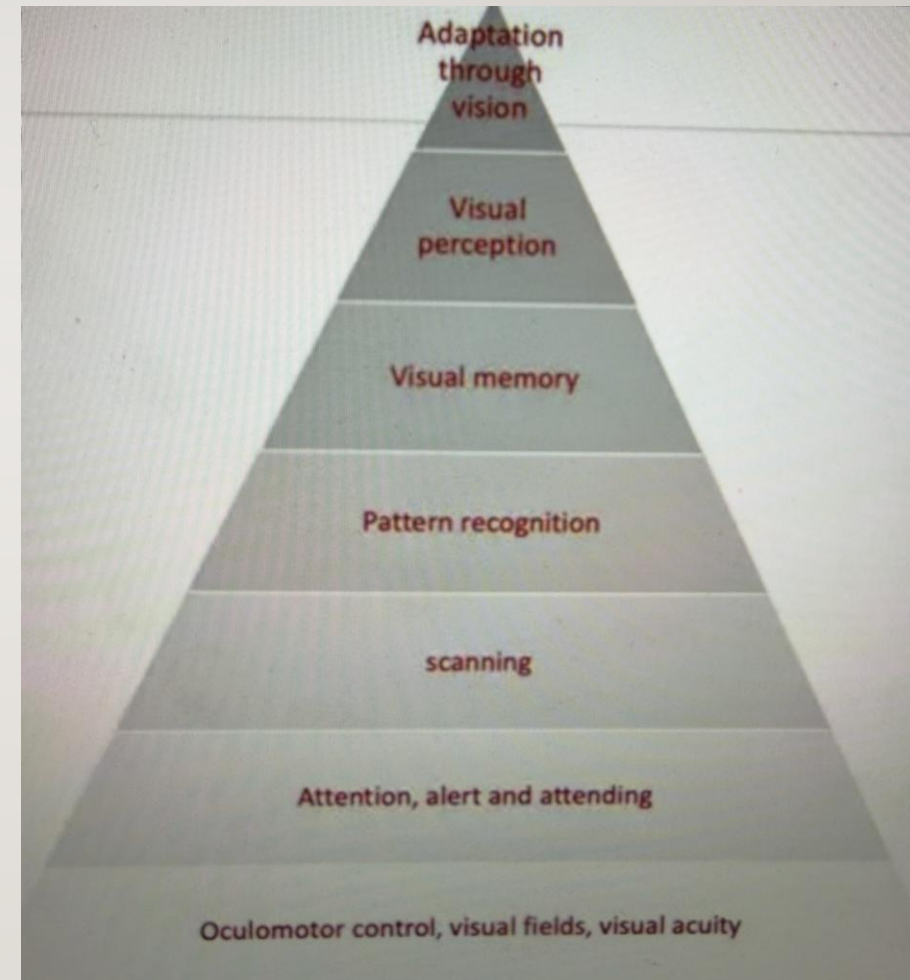


INTEGRATION PF CIRCLES

- Imagine how these circles intertwine during integration until they achieve the final peak of hierarchyVISION



VISION SHOULD BE AT THE TOP



SO

-
- Begin with motor to sensory to higher level integrational skills
 - Concept of integration is the body's own biofeedback loop
 - The integrational skills are most important to allow for the optimal level of Vision to be produced.

THE NOUS GOVERNS THE INTEGRATIONAL SKILLS

- Integrational skills at every step from motor all the way up the visual pathway until the final result of vision
- So
- Let us consider various areas where the mind governs the brain and takes over in the visual system

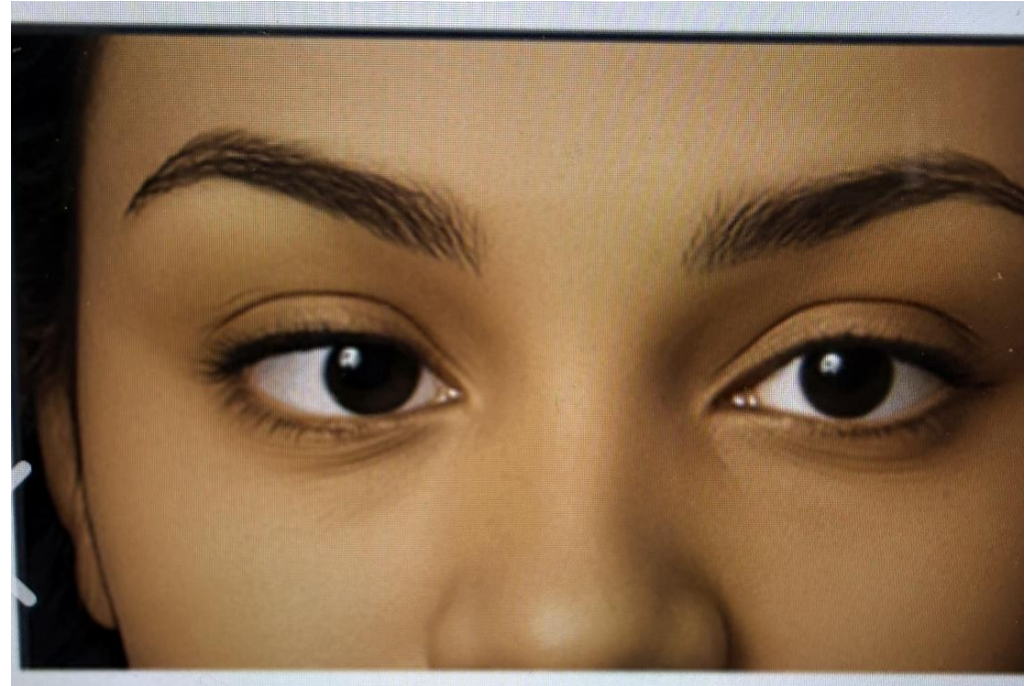
INTEGRATIONAL SKILLS

- Physiological diplopia awareness is one great sign of how the mind takes over and tells the brain to ignore this bug and one and not two and continue to navigate forward



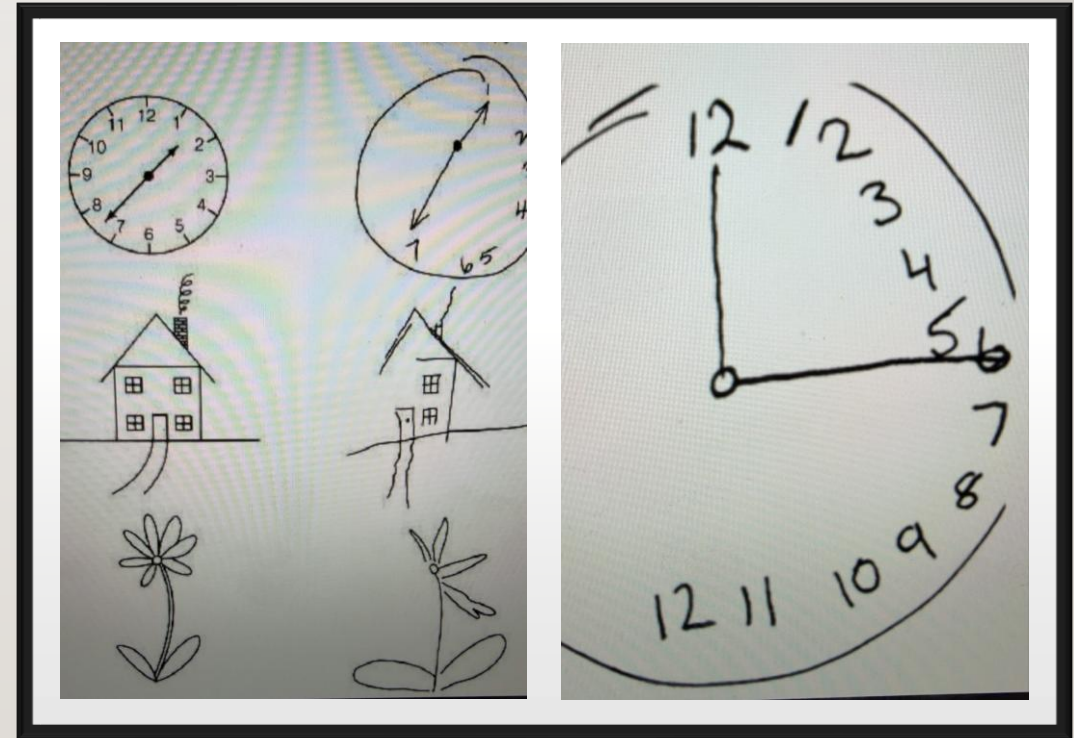
SUPPRESSION

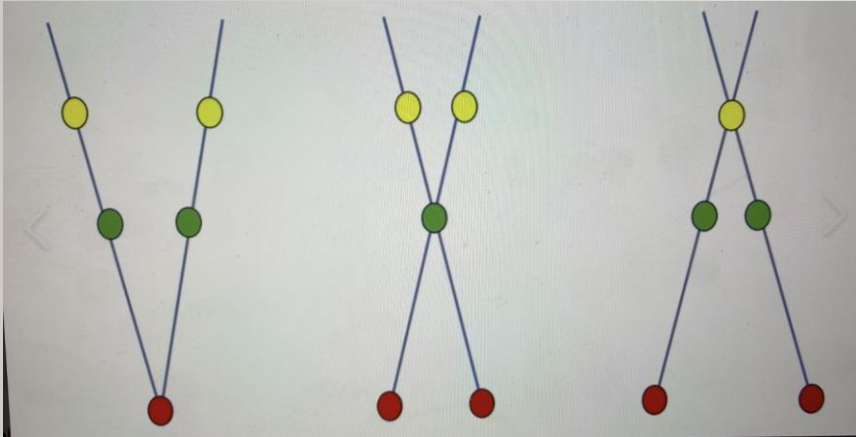
- The brain receives information from both eye balls but the mind takes over and ignores one when it is easier for the functionality of the system
- With any mechanical issue



VISUAL NEGLECT

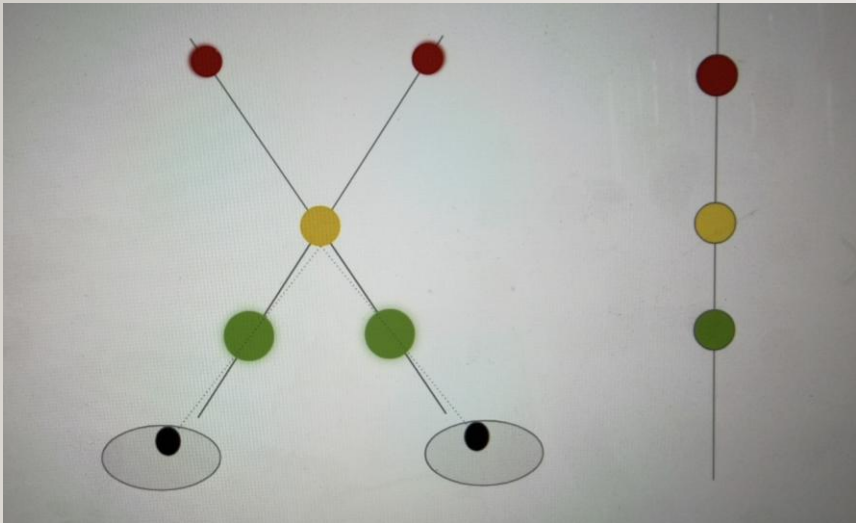
- The visual field may test intact, however the parts of the visual field are either ignored or squeezed onto one side as evident with the clock





HARMONIUS ARC

- The mind takes over since the brain input is contradictory to the visual input and the mind anomalously fuses the images and one string is seen instead of the expected as seen above.



INTEGRATIONAL CORRECTIONS ... THE MIND OVER BODY

- Physiological diplopia awareness
- Ocular Suppression
- Neglect
- HARC or UHARC

OTHER ISSUES SEEN WITH VARIOUS EYE ISSUES

- Prism adaption patient A
- Horror fusionalis Patient B
- Grounding Case example ... Patient C
- Thus Existence of mind's eye

CASE A

- Prism adaption patient A with a 20 diopter turn may adapt and return even with up to 145 prism diopters
- PAT done to see if an eye turn is broken down and the splinter skills of suppression

CASE B

- Horror fusionalis Patient B on synoptophore the images jumped vertically to avoid fusion horizontally
- This is usually evident with small angle deviations and the patient has built skills to avoid fusion and symptoms

CASE C

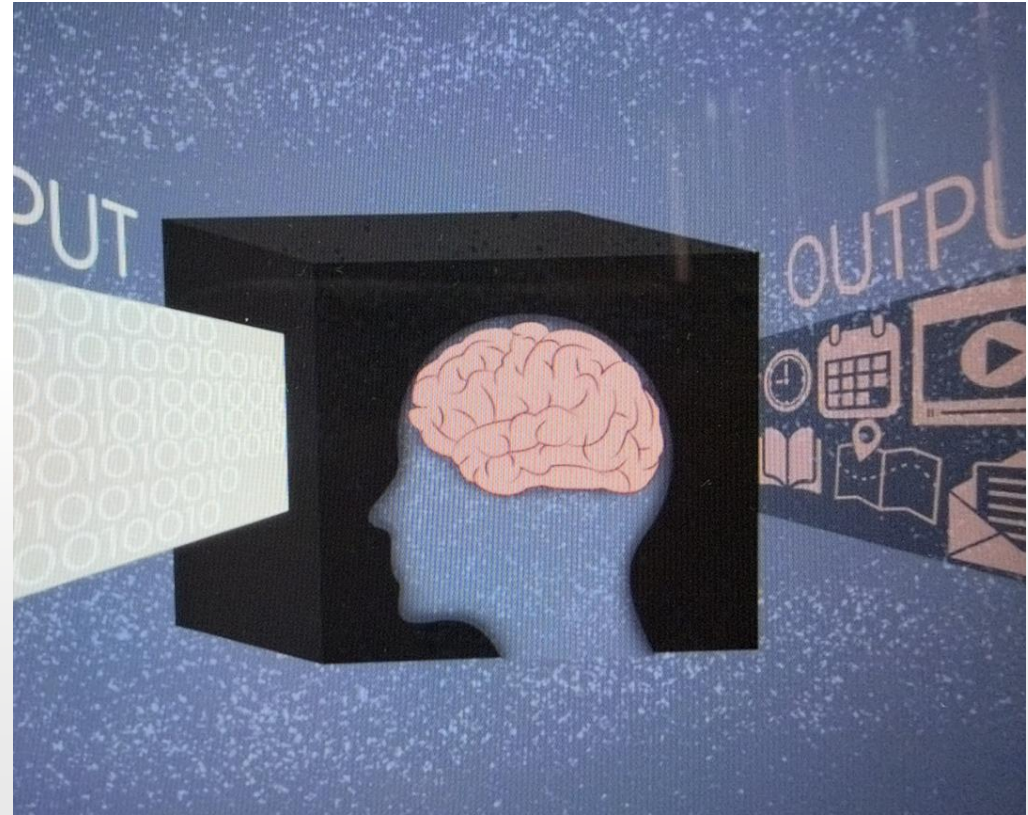
- Grounding Case example ... issues with primitive reflexes affect the child's perception of the world and their integrational skills that move them from motor to visual
- The child was avoiding the world and could not function slept with feet on floor

THUS

-
- The eyes motorically pick up images that are relayed up to the grey matter of the brain but the correcting system within the mind ... this correction from the mind takes over what is inputted from the visual system and the output is the corrected mind's eye view.

BRAIN VS MIND

- The input to the black box is filtered with our Nous (includes knowledge, experience and psychological gestalt) the output varies amongst us all

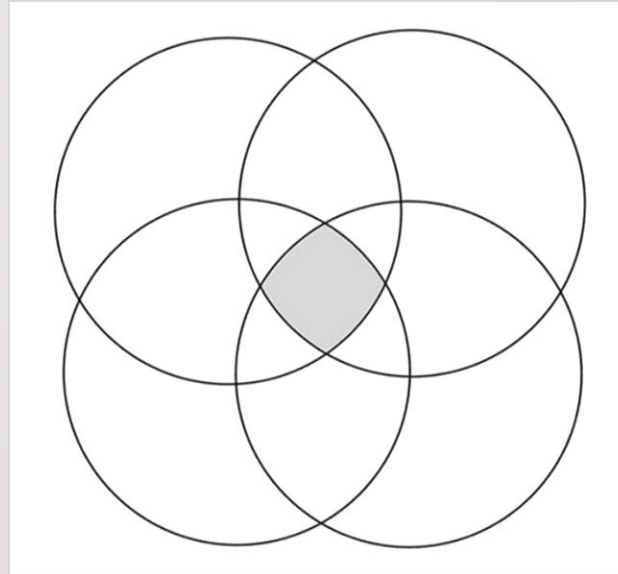


THE HIERARCHY OF VISION

- Not only flat four circles but that is a wonderful starting point
- Think of it as all the lines are integrational skills and pull the middle up as a pyramid since every Nous is different, depending on experience and knowledge.

VISION IS THE APEX OF PYRAMID

- Vision begins with the Antigravity, Centering, Identification and Speech Auditory
- Along with the integration and the mind to reach the apex of the pyramid ... Vision



VISION

- Truly in the mind's eye of the beholder

