



METALLIC
SOLUTION

Ceramic WALLS



Ceramic **WALLS**



COLORS & SURFACES

Ceramic Walls Products are available in more than 60 standard colors. More colors can be reached by glazing. We assure the color will never fade.



White

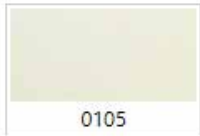
Red

Yellow

Gray

Blue

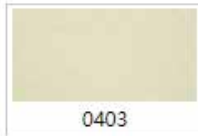
Green



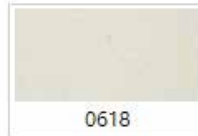
0105



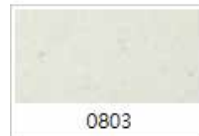
0203



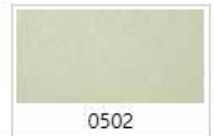
0403



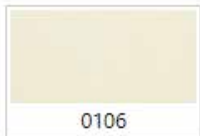
0618



0803



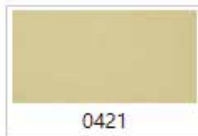
0502



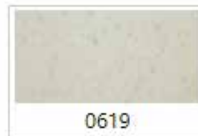
0106



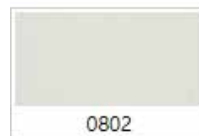
0201



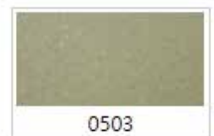
0421



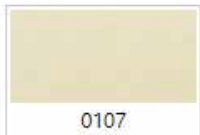
0619



0802



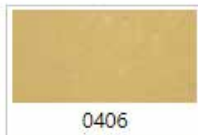
0503



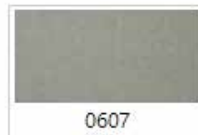
0107



0202



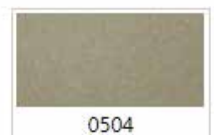
0406



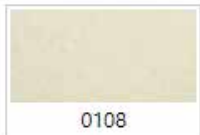
0607



0804



0504



0108



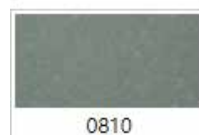
0207A-6



0420



0616



0810



0209



0413



0609



0215



0417

High-quality products from the intent of every detail, each of our products contain our enthusiasm and professional, we focus on the details of the product's scrutiny, more focused on innovative technology.



Ceramic plate size (size) units : mm

F18	length range is : 300~1500 Width can be : 206,306,356,406,456,506	F20	length range is : 300~1500 Width can be : 206,306,406,406,456,506
F30	length range is : 300~1500 Width can be : 210,310,460,510,610,810	F40	length range is : 600~1800 Width can be : 710,810,910,1010,1110,1210
F80	Board stick one		

Pottery (cubic pottery) (8mm for the thickness) units : mm

length range is : 300~1500

Square :

50×50,50×100,50×150,50×200,60×60,60×60,60×100,60×150,70×70,70×100,80×80,80×100,80×160,80×200,90×90,90×120,100×200... ..

Round :

Φ50, Φ60, Φ70, Φ80... ..

Fuselage, Prism, Quadrilateral, Oval, Triangle... ..

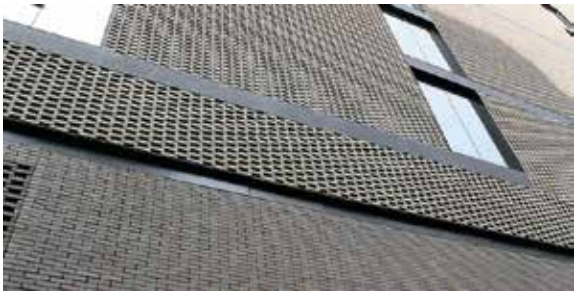
Pottery units : mm

200×100×50,230×115×40,230×50×20,300×150×50... ..



01 advocate of energy-efficient buildings

Unique breathing curtain wall, hollow design, lighten the load of building structure system, and has good heat insulation, heat preservation, more sound insulation and noise reduction, and improve the economical and energy-saving of buildings.



02 cutting-edge technology, green

The world's leading extrusion injection technology makes materials more compact, more uniform and stable structure; the production process is cleaner, more energy efficient, and can be recycled. It is an advocate of green environmental protection.



03 is rich in color, varied in shape and strong in texture

The products are rich in color and long-lasting, with small color difference, strong texture, more affinity, and a variety of shapes, three-dimensional sense, more artistic, and fully meet the design requirements.



04 ultra low water absorption, high strength, outstanding performance

It has lower water absorption rate than ordinary clay plate, high strength, high safety, high wind pressure resistance, high frost resistance, anti-pollution and anti-corrosion.



05 EU DIT, CE certification, higher security

Through test and analysis, it has passed the EU DIT and CE technical certification, and the quality is excellent. The wind resistance of the ceramic plate is more than 11kPa, and the maximum wind absorption capacity is 404km per hour.



06 natural raw materials, high temperature firing

It is made of high-quality pure natural raw materials at high temperature. It is consistently faded inside and outside, with little color difference; high stability, no bursting; no radiation, no light pollution; no interference to the signal.







07 easy to install, building envelopes easier

The unique seam design eliminates the need for glue, and the installation is cleaner, convenient and quicker; the use is safer; the natural raw material has low metal content, does not produce static electricity, is not easy to absorb dust, and can be cleaned by rain.

Technical parameter

The pottery plates are hollow alveolar structures, which are mixed with clay and feldspar bone. The colorants can be mixed with oxides and used in the billet.

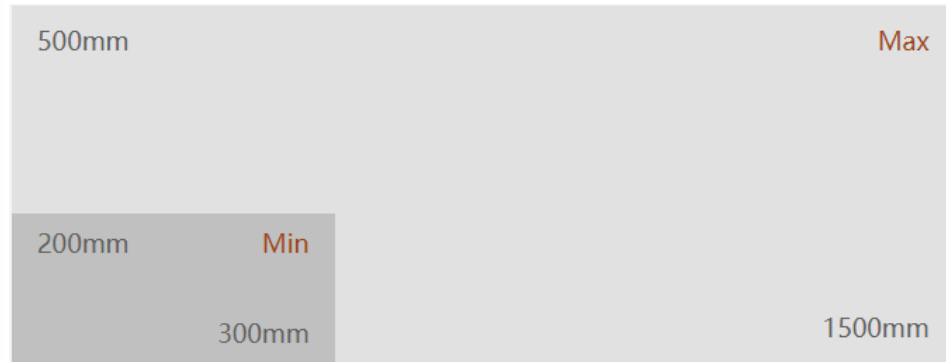
 <p>Color difference</p>	 <p>Wear resistance coefficient <math><175\text{mm}^3</math> UNE-EN 10545-6</p>	 <p>Bending resistance 35-55N/mm³ UNE-EN 10545-4</p>	 <p>Surface anti-scratch coefficient (large area) 6-7 UNE-EN 67-101</p>	 <p>Thermal shock resistance coefficient UNE-EN 10545-9</p>
 <p>Antifreeze and melt UNE-EN 10545-12</p>	 <p>Corrosion resistance UNE-EN 10545-13</p>	 <p>Linear thermal expansion coefficient <math><9 \times 10^{-6}</math>/C UNE-EN 10545-8</p>	 <p>Anti-fouling ability UNE-EN 10545-14</p>	 <p>Reduction factor >0.8 UNE-EN 10545-5</p>

Ceramic plates provide a variety of product selections such as natural panels, sand panels, slot panels, pottery louvers, etc., with complete specifications and specifications, through the use of different product combinations to achieve impact visual effects.

F18



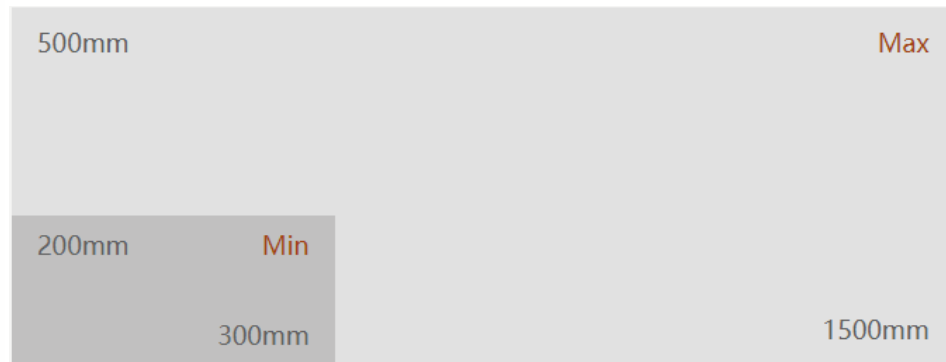
Ceramic plate specifications (size) unit: mm, length range: 300~1500, width can be: 206,306,356,406,456,506



F30



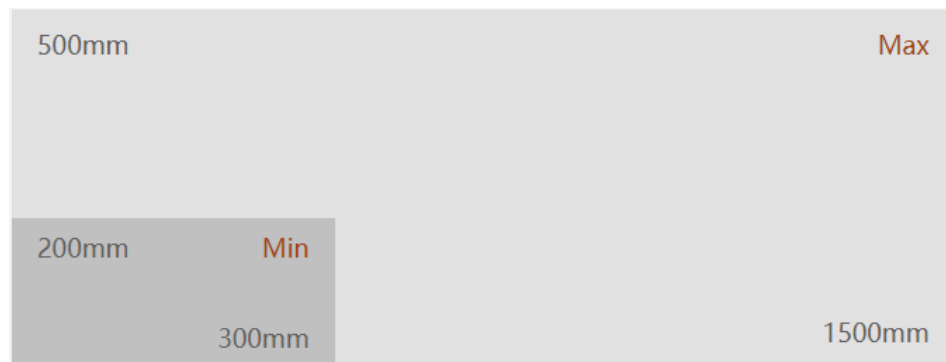
Ceramic plate specifications (size) unit: mm, length range: 300~1500, width can be: 210,310,460,406,456,506



F20



Ceramic plate specifications (size) unit: mm, length range: 300~1500, width can be: 206,306,356,406,456,506



Ceramic plate specifications (size) unit: mm, length range: 600~1800, width can be: 710,810,910,1010

F40

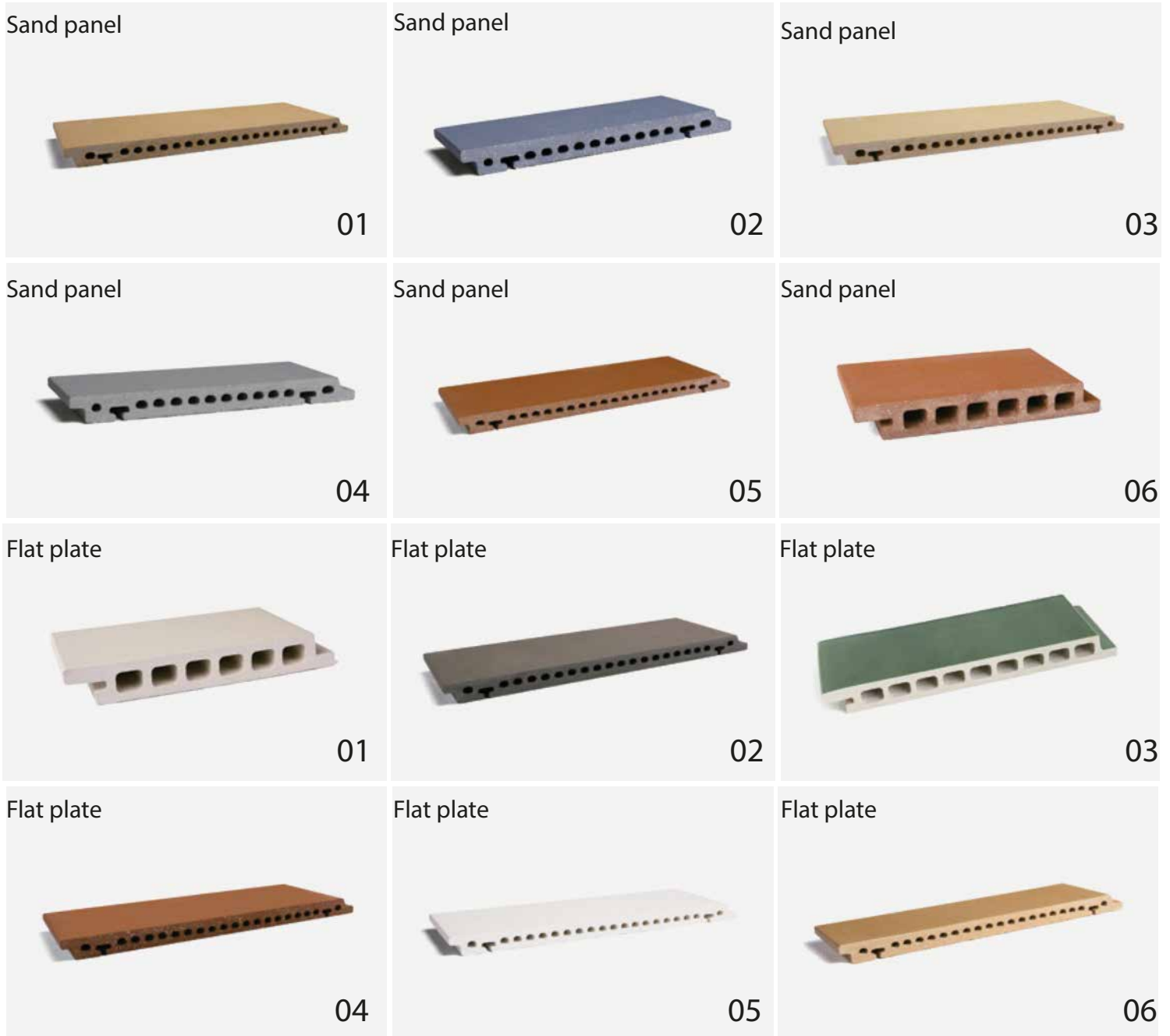


1010mm			Max
710mm	Min		
	600mm		1800mm



A variety of surface treatment effects

Ceramic plates provide a variety of product choices such as natural panels, sand panels, groove panels, pottery louvers, etc., complete specifications, through the use of different product combinations to achieve impact visual effects.



Slot panel



01

Slot panel



02

Slot panel



03

Slot panel



04

Slot panel



05

Slot panel



06

Slot panel



07

Slot panel



08

Slot panel



09

Slot panel



10

Sand panel



01

Sand panel



02

Corrugated board



01

Corrugated board



02

Corrugated board



03

Pattern panel



01

Pattern panel



02

Pattern panel



03

Pattern panel



04

Sandblasted surface

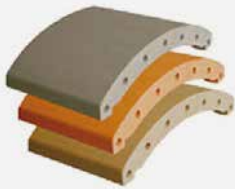


Corrugated board



Shaped pottery series

Curved plate



01

Shaped plate



01

Shaped plate



02

Curved plate



02

Curved plate



03

Curved plate



04

Curved stick



Shaped plate



01

Shaped plate



02

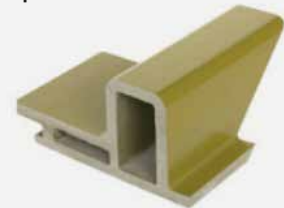
Shaped plate (corner plate)



Shaped plate (character shape)



Shaped plate



03

Shaped plate



04

Shaped plate



05

Shaped plate



06

Shaped plate



07

Shaped plate



08

Shaped plate



09

Shaped plate



10

Shaped plate



11

Shaped plate



12

Shaped plate



13

Shaped plate



14

Shaped plate



15

Shaped plate



16

Shaped plate



17

Shaped plate



18

Shaped plate



19

Shaped plate



20

Shaped plate



21

Pottery brick series

Cotta



01

Cotta



02

Cotta



03

Cotta



04

Cotta



05

Cotta

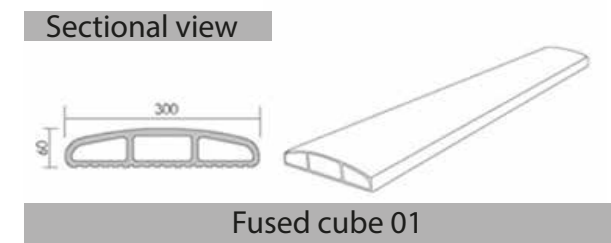
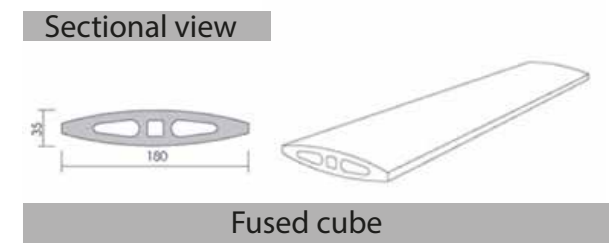
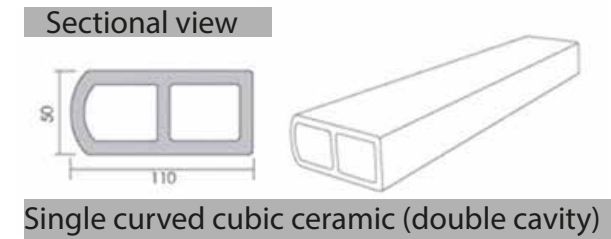
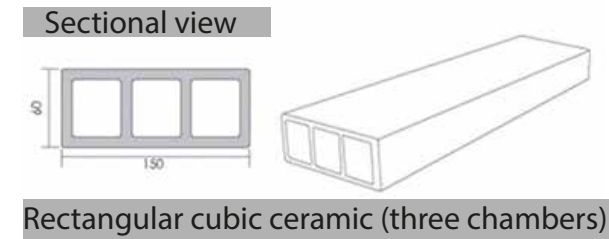
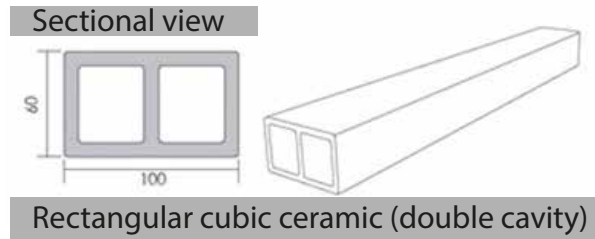
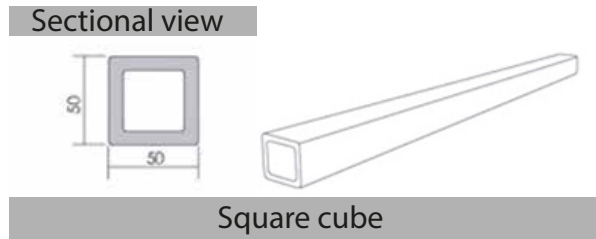


06



Cubic pottery series

Cubic ceramic is installed on the outside of the glass curtain wall or aluminum alloy window, which can meet the needs of the use of the building curtain wall and the appearance decoration. It can also be applied to indoors in large spaces, such as office buildings, waiting halls, theaters, etc.

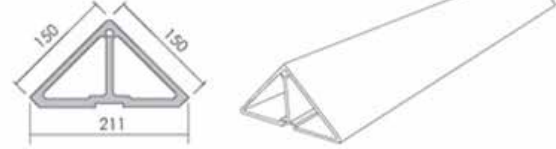


Sectional view



Round cubic pottery

Sectional view



Triangular cubic ceramic (double cavity)

Sectional view



Fused cube

Sectional view



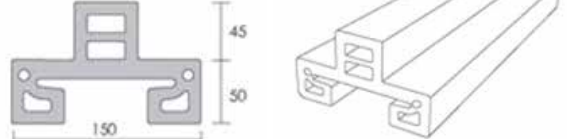
Diamond cube

Sectional view



Triangular cube

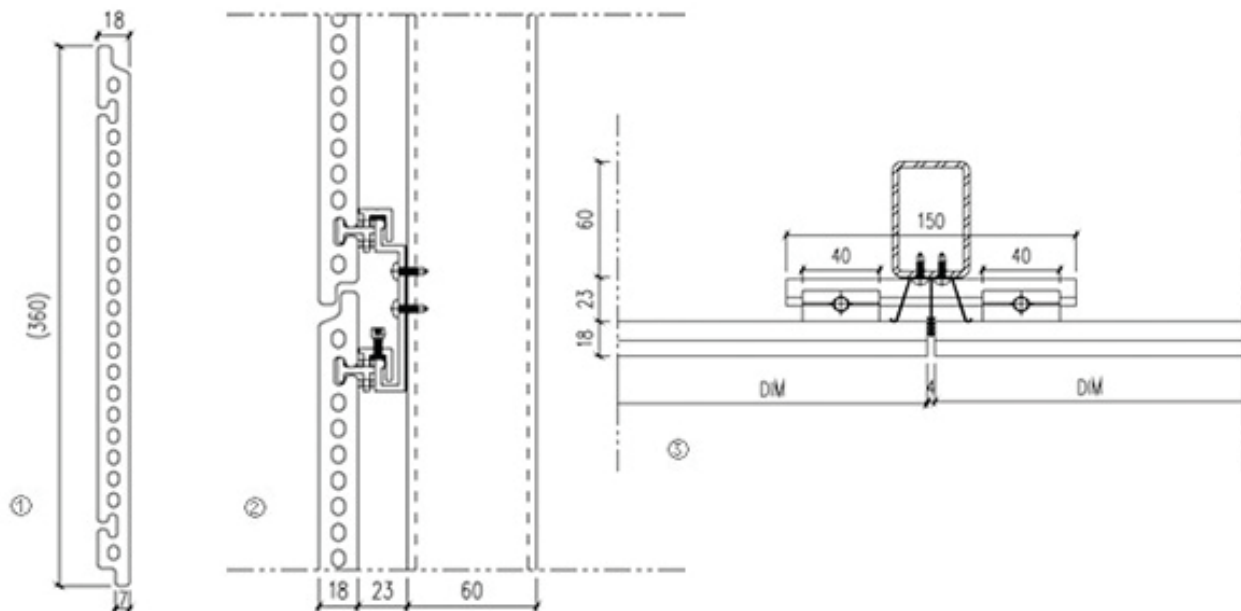
Sectional view



Pin-shaped cube

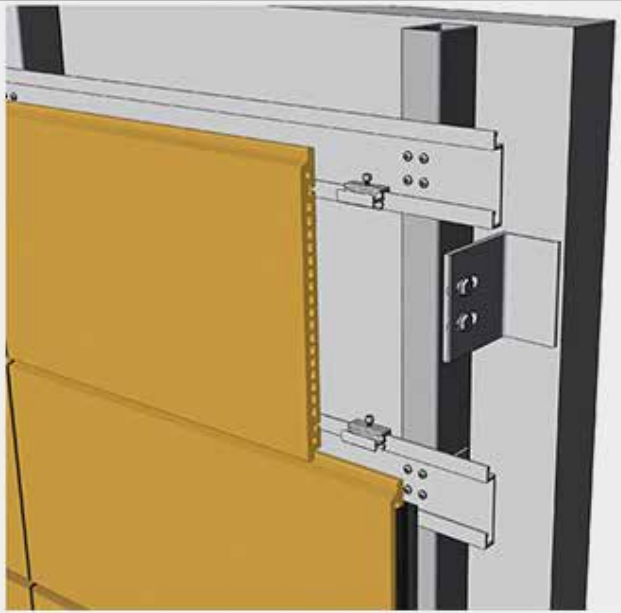
System installation

F18 pottery curtain wall system

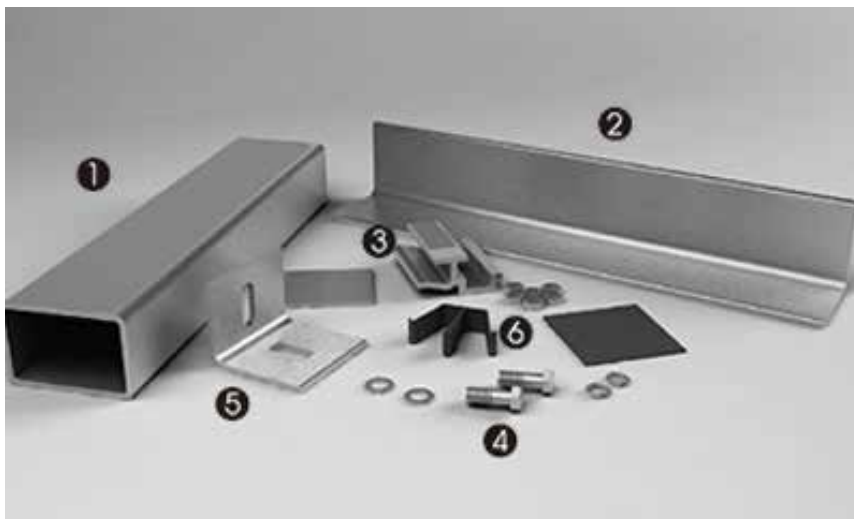
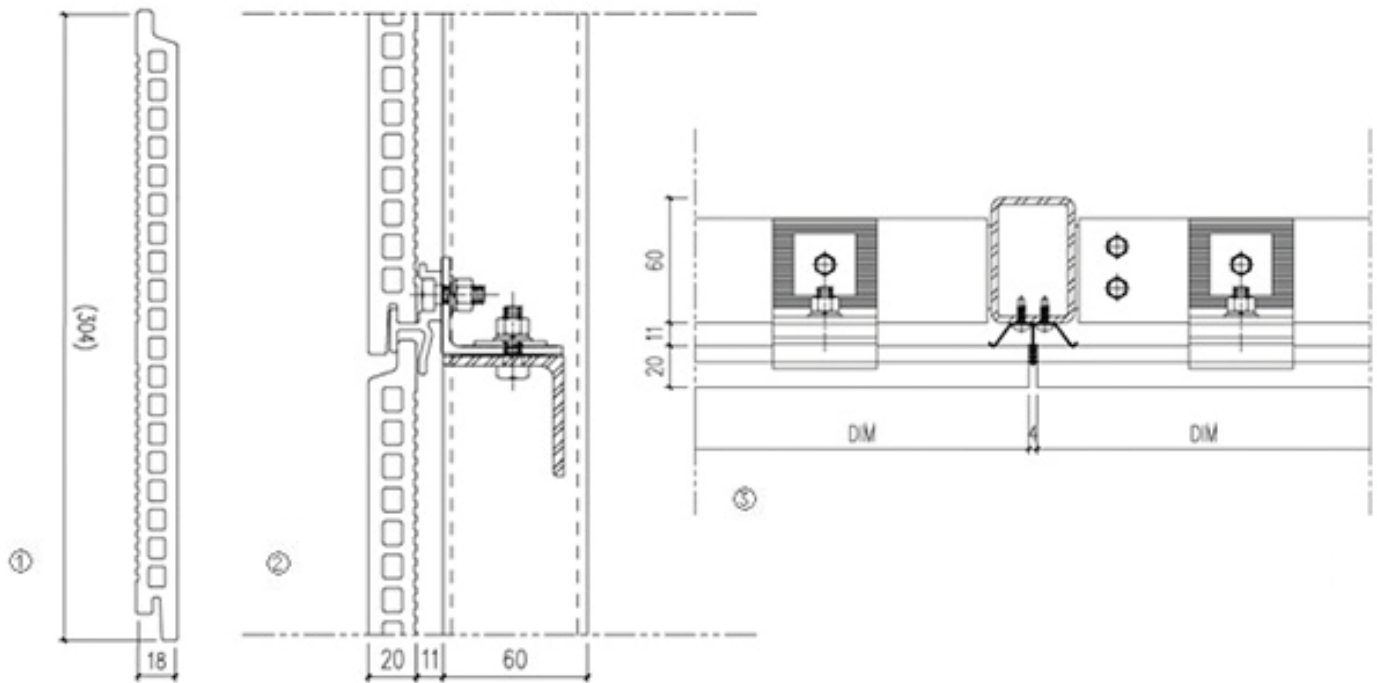




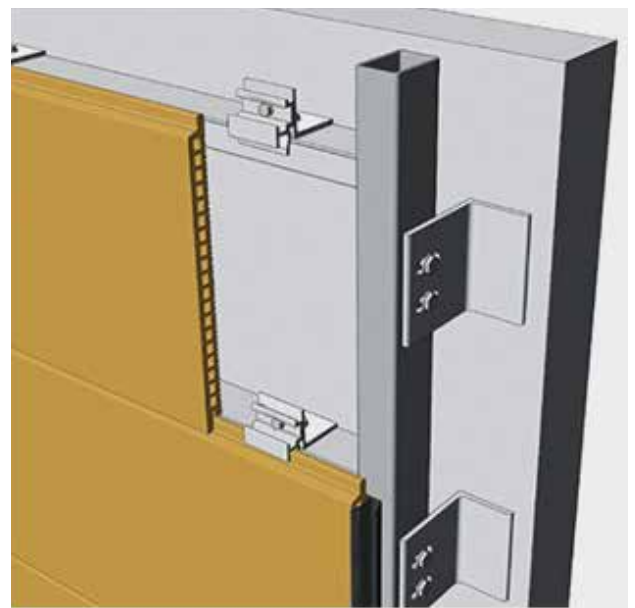
1. 120x60x3 steel square tube mullion
2. F18 system beam
3. Aluminum alloy pedestal
4. 3mm rubber mat
5. ST4.8x16 self-drilling nail



F20 pottery curtain wall system

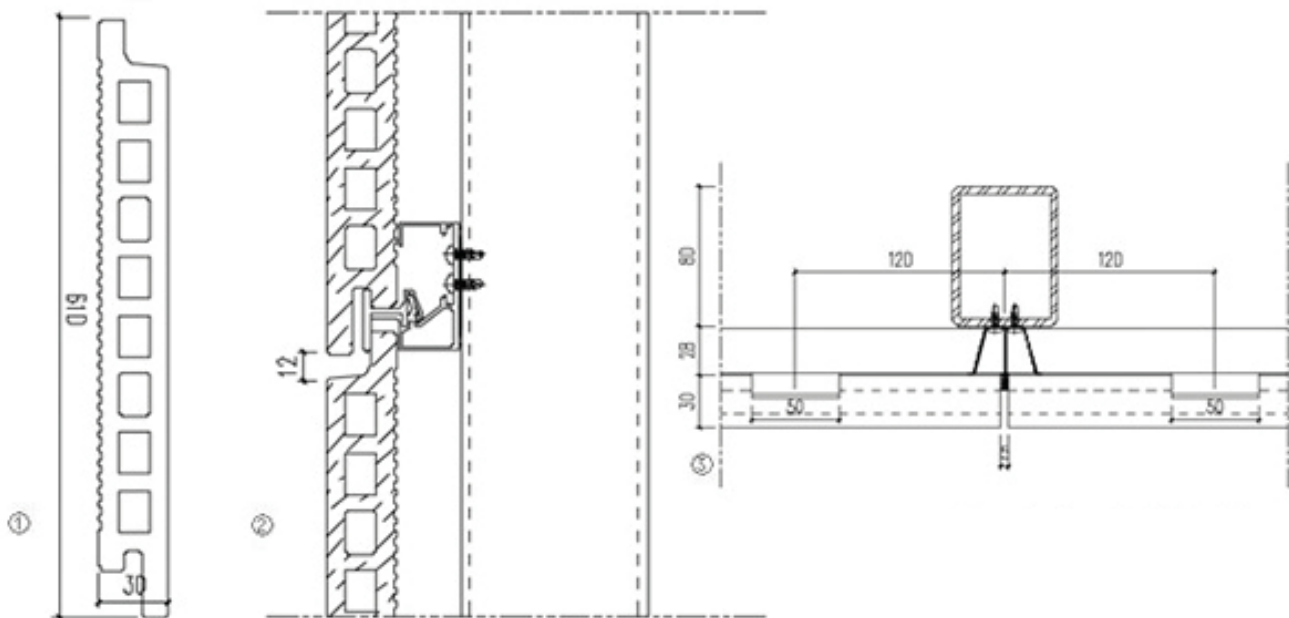


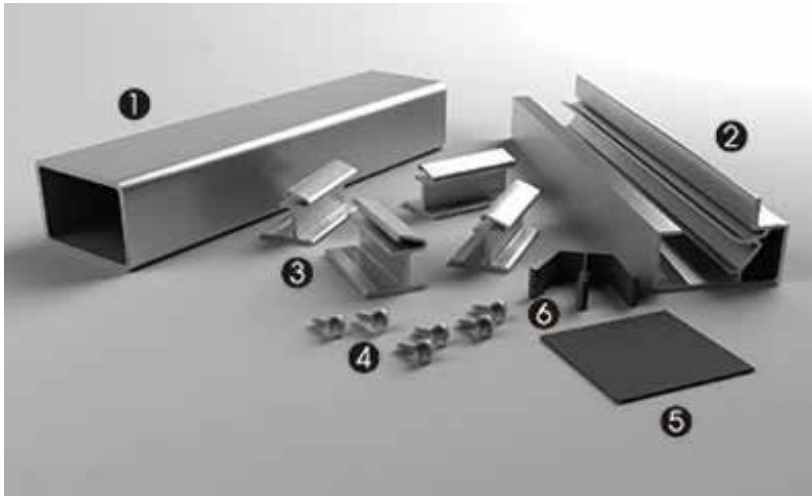
1. 60×40×4 steel square tube mullion
2. 50×50×4 angle steel adapter
3. Aluminum alloy pendant
4. M8X25 bolt assembly
5. Aluminum alloy adapter





F30 pottery curtain wall system

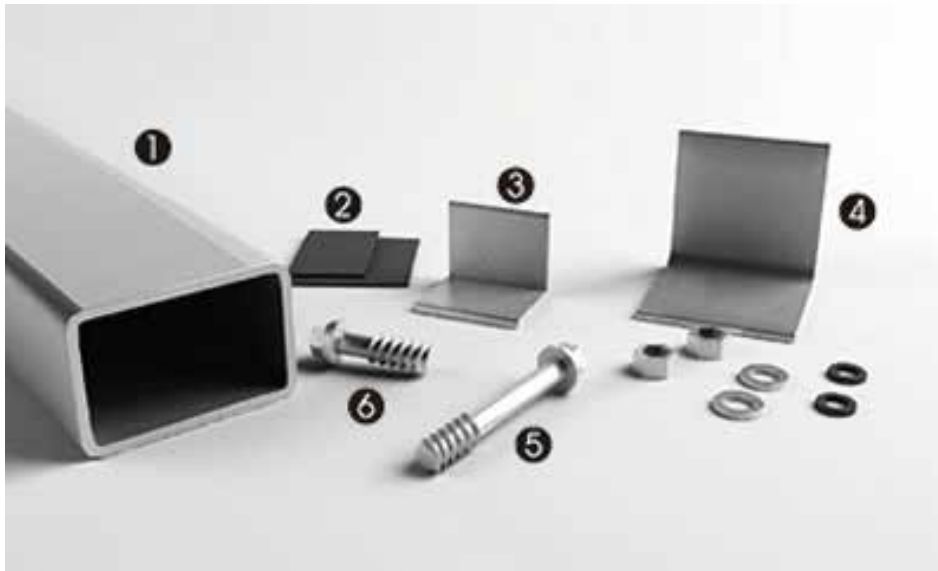
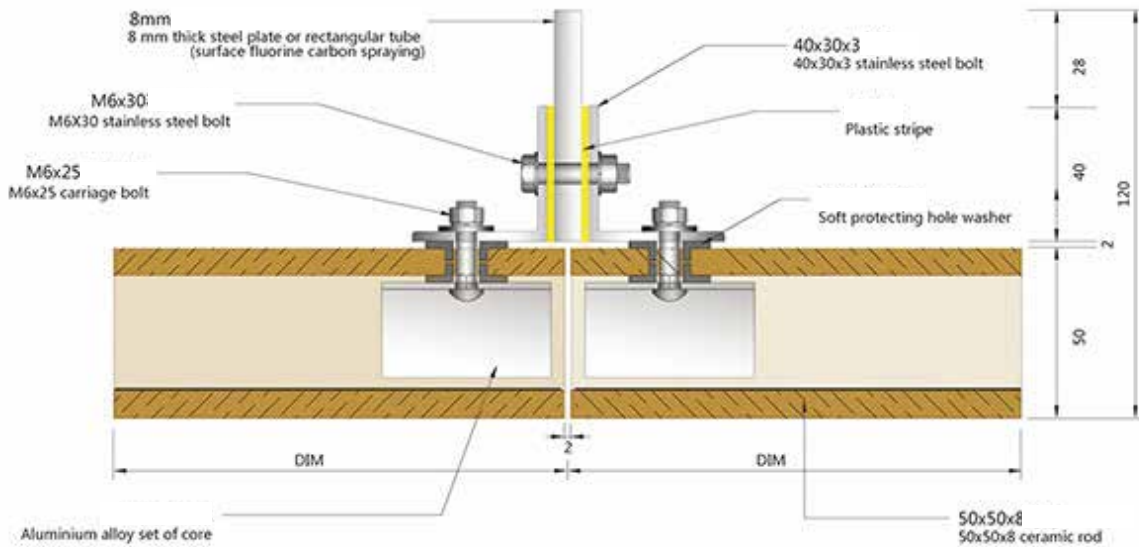




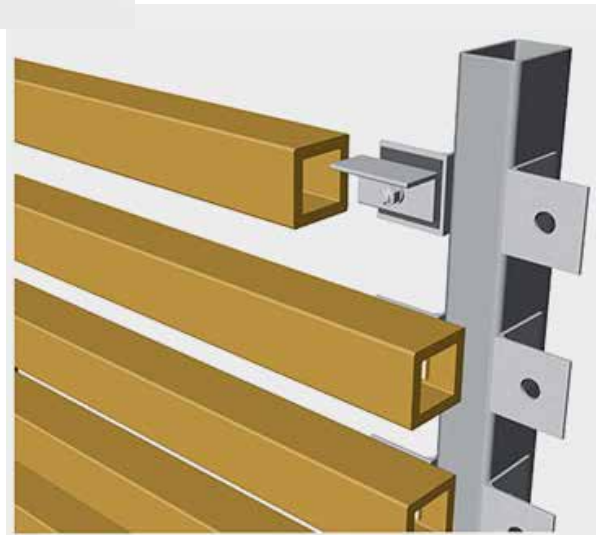
1. 60x40x4 steel square tube mullion
2. Aluminum alloy frame
3. Aluminum alloy pendant
4. ST4.8X16 self-tapping self-drilling nail
5. 1mm rubber mat
6. EPDM vertical strip



F50 clay stick curtain wall system



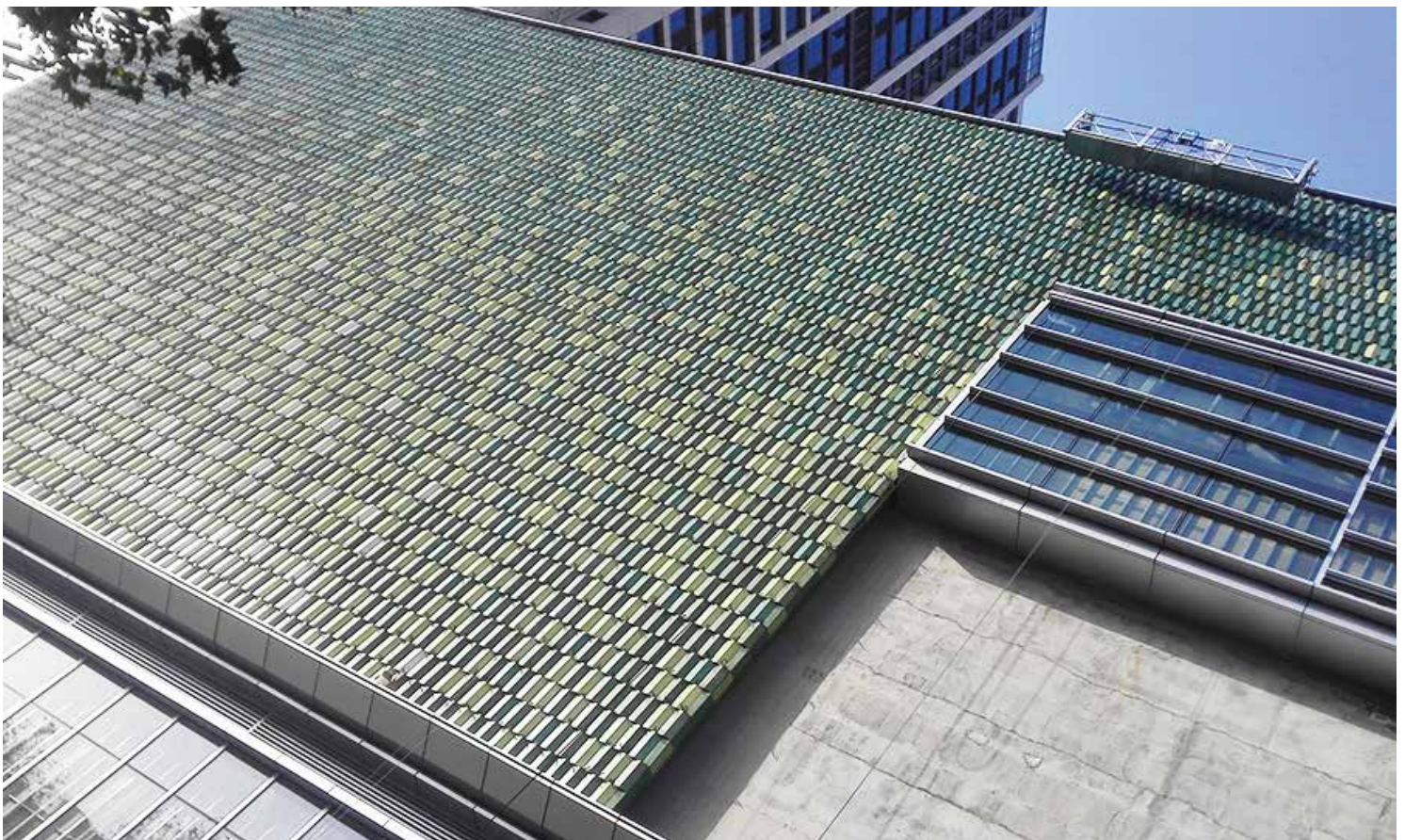
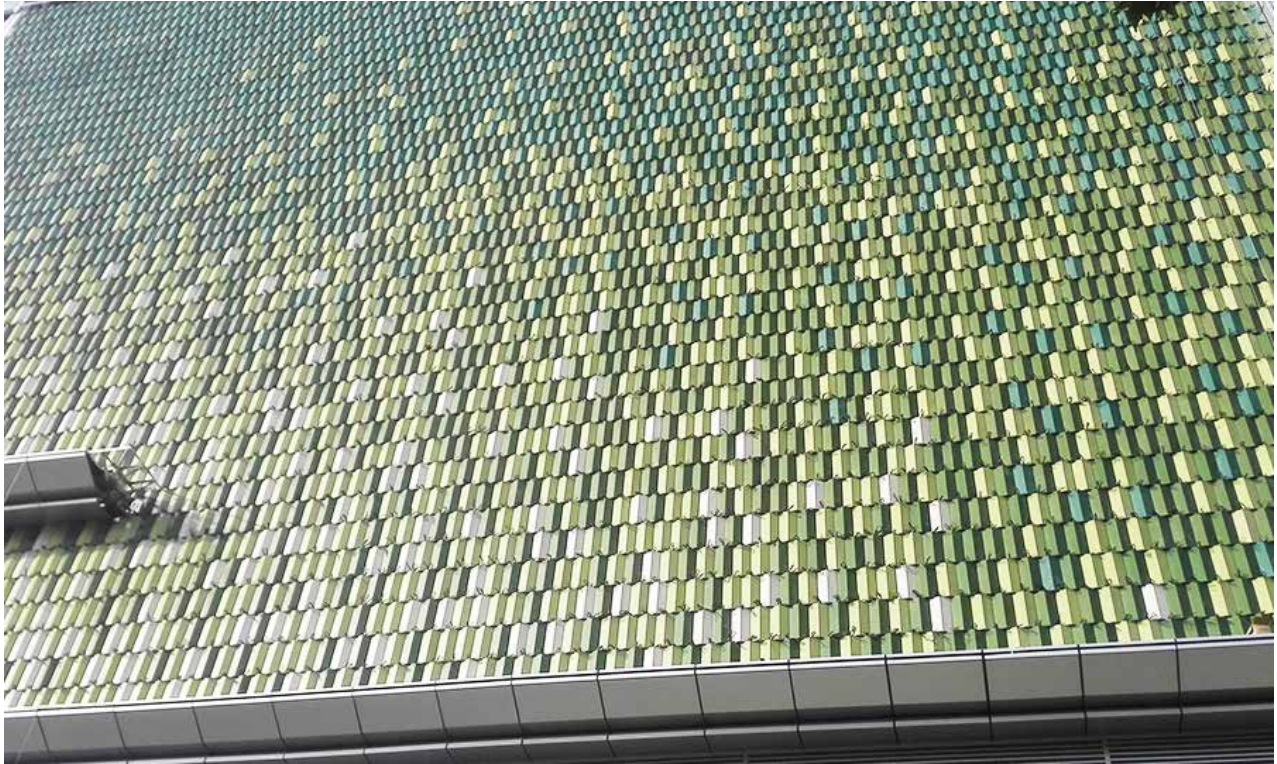
1. Steel square tube mullion
2. Rubber mat
3. Angle steel core
4. Angle steel connecting piece
5. M6X65 bolt assembly
6. M6X25 bolt assembly



Technology index

Performance index	306*F18 White	306*F18 Gray	310*F30 Yellow
Bibulous rate	1.1%	1.4%	2.34%
Dry weight	31kg/m ²	31kg/m ²	41kg/m ²
Frost resistance	After 100 cycles of freeze-thawing without cracking	After 100 cycles of freeze-thawing without cracking/td>	After 100 cycles of freeze-thawing without cracking
Damage strength	4966N	4779N	8722n
Rupture modulus	Average value: 97MPa, Least value: 86MPa	Average value: 59.36MPa, Least value: ≥50MPa	Average value: 92.43MPa, Least value: ≥80MPa
Poisson's ratio	0.16	0.16	0.16
Elastic modulus	44GPa	34GPa	34GPa
Fire performance	A1 level	A1 level	A1 level
Acid and alkali	ULA level	ULA level	ULA level
Radioactive	Class A decoration materials	Class A decoration materials	Class A decoration materials
Vibrate resistance	More than 10 degrees fortification	More than 10 degrees fortification	More than 10 degrees fortification
Simulation wind pressure test	Reaching 11kPa without damage	Reaching 11kPa without damage	Reaching 11kPa without damage
Sound insulation performance	Reduce noise more than 9dB	Reduce noise more than 9dB	Reduce noise more than 9dB
Coefficient of thermal conductivity	0.31w/m.K	0.31w/m.K	0.31w/m.K
Thermal shock resistance	After 50 cycles of thermal shock without cracks and cracks	After 50 cycles of thermal shock without cracks and cracks	After 50 cycles of thermal shock without cracks and cracks
Resistance to polluting	level 2	level 2	level 2
Impact resistance	0.78	0.78	0.78
Linear coefficient of thermal expansion	5.2×10 ⁻⁶ °C ⁻¹	5.2×10 ⁻⁶ °C ⁻¹	5.2×10 ⁻⁶ °C ⁻¹

Wuhan Southland Center



Shanghai Concord City



Zhejiang Dongyang Chinese Wooden Museum



Ceramic **WALLS**