

Mesh SOLUTION

Mesh **Solution**



**METALLIC
SOLUTION**

This catalogue shows the range of aluminum and metal mesh with different cuts and perforations.

The models that we will present can be made in different sizes and thicknesses. contact the manufacturer to provide you with the information your project requires.





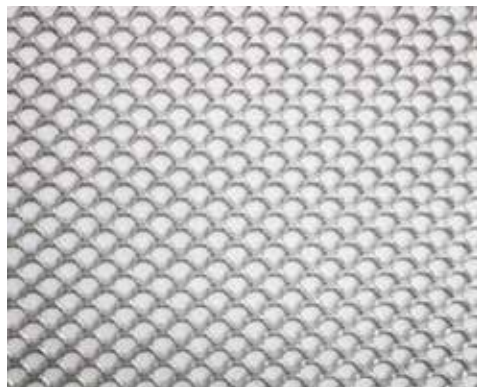
Mesh Solution

ALUMINUM EXPANDED MESH

Type 1 Diamond Hole						
NO.	Mesh reference	Thickness	Strand width	SWD	LWD	Open area
1	HJA-05610	0.5mm	1.6mm	6.0mm	10mm	50%
2	HJA-1810	1.0mm	1.5mm	8.0mm	10mm	60%
3	HJA-1816	1.0mm	2.2mm	8.0mm	16mm	42%
4	HJA-11020	1.0mm	2.0mm	10mm	20mm	57%
5	HJA-21530	2.0mm	2.8mm	15mm	30mm	60%
6	HJA-1540	1.5mm	2.8mm	15mm	40mm	60%
7	HJA-21840	2.0mm	4.8mm	18mm	40mm	43%
8	HJA-32065	3.0mm	7.0mm	20mm	65mm	28%
9	HJA-2565	2.0mm	9.0mm	25mm	65mm	25%
10	HJA-32675	2.0mm	8.9mm	26mm	75mm	35%
11	HJA-33580	3.0mm	10mm	35mm	80mm	40%
12	HJA-48100	3.0mm	10mm	48mm	100mm	55%
13	HJA-48115	3.0mm	15mm	48mm	115mm	35%
14	HJA-48135	2.0mm	15mm	48mm	135mm	35%
15	HJA-65150	3.0mm	30mm	65mm	150mm	8%
16	HJA-80200	3.0mm	22mm	80mm	220mm	42%
17	HJA-85200	3.0mm	30mm	85mm	200mm	28%
18	HJA-110240	3.0mm	25mm	110mm	240mm	52%
19	HJA-125250	3.0mm	32mm	125mm	250mm	45%



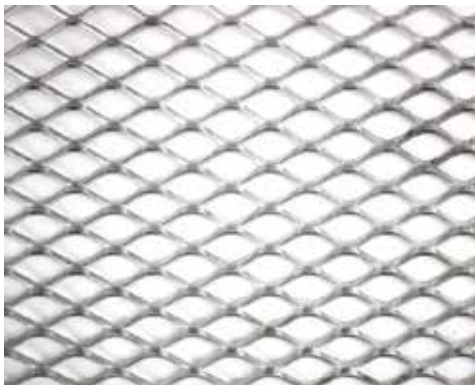
HJA-05610



HJA-1810



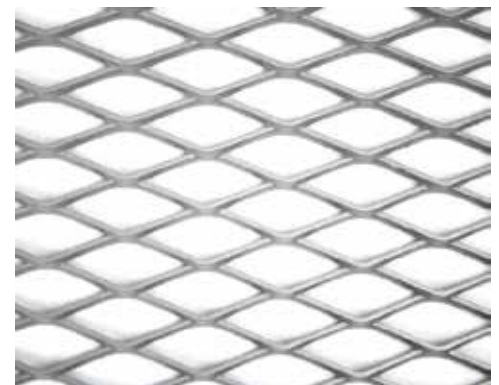
HJA-1816



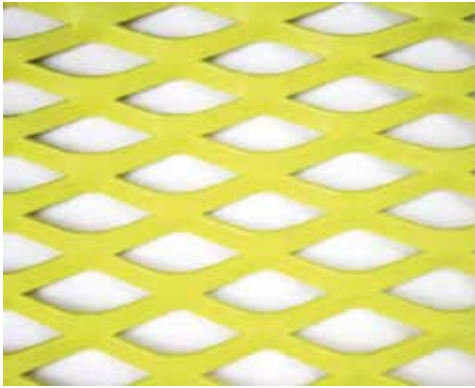
HJA-11020



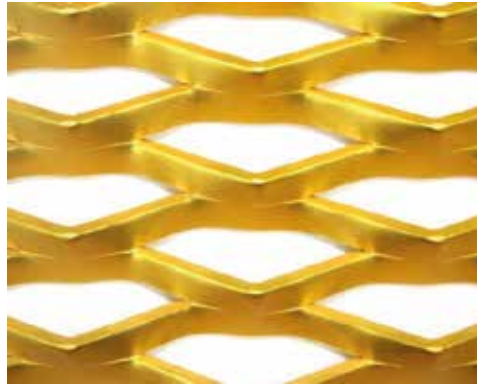
HJA-21530



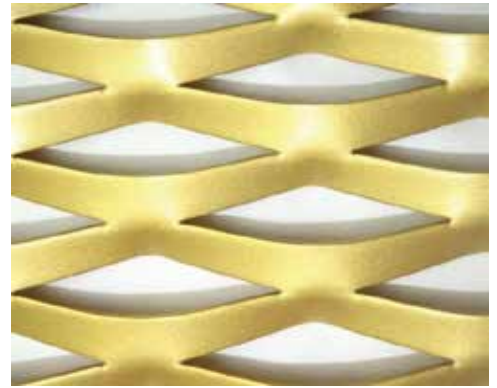
HJA-1540



HJA-21840



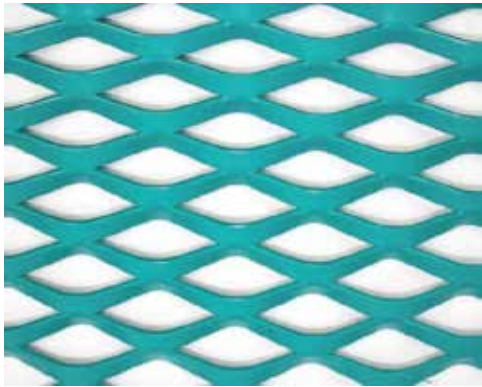
HJA-32065



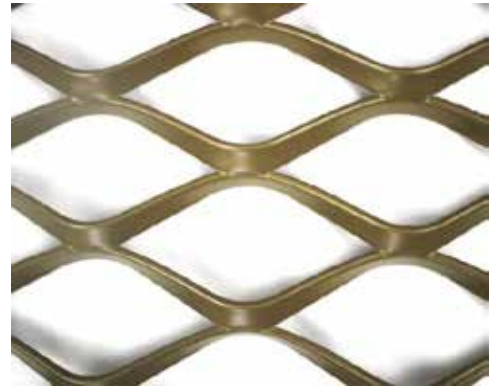
HJA-2565



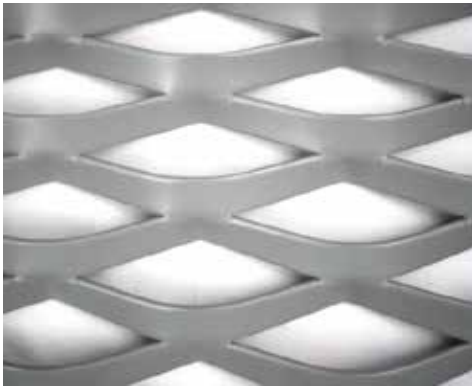
HJA-32675



HJA-33580



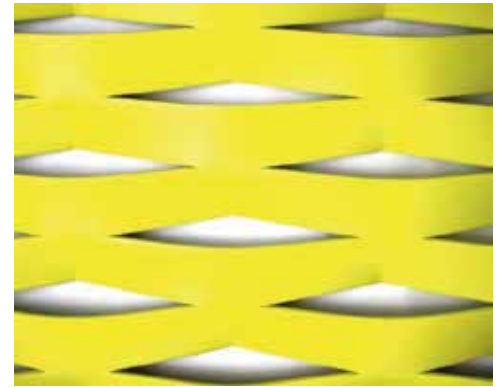
HJA-48100



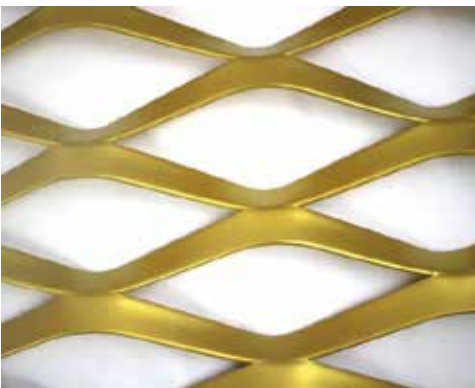
HJA-48115



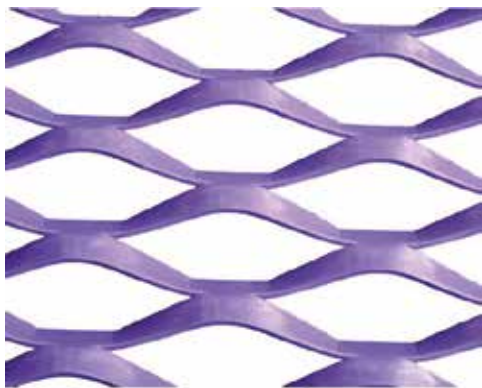
HJA-48135



HJA-65150



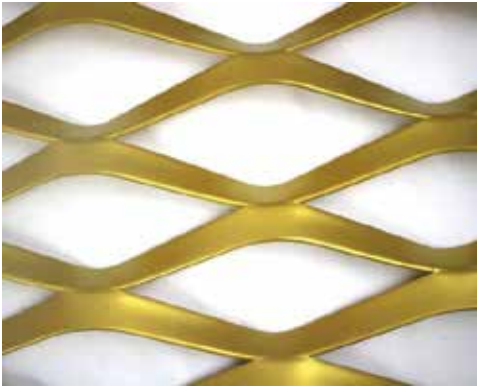
HJA-80200



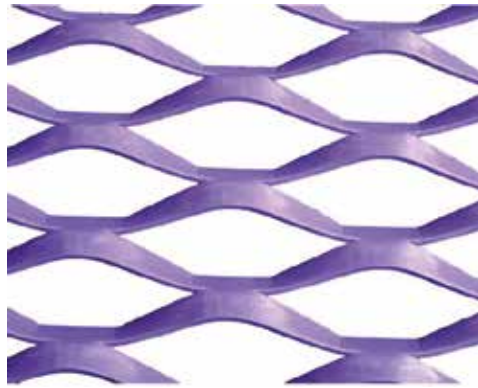
HJA-85200



HJA-110240



HJA-80200

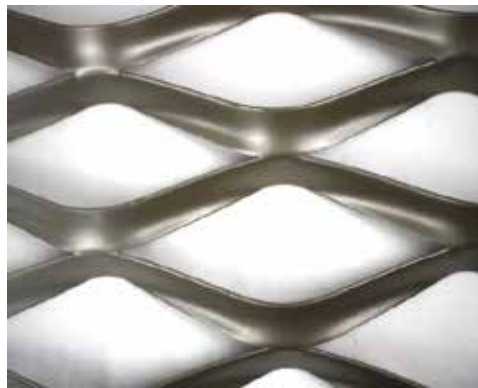


HJA-85200

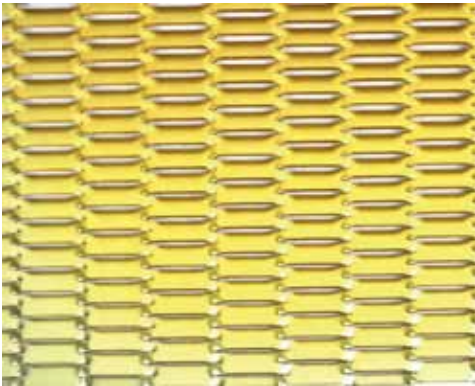


HJA-110240

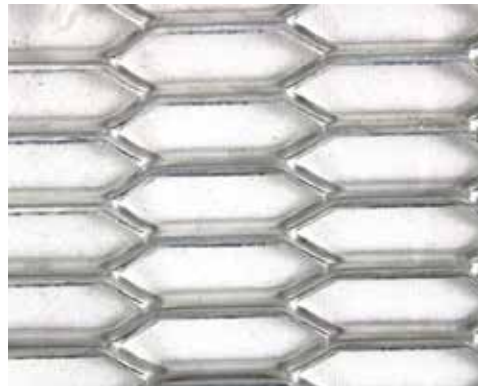
HJA-125250



Type 2 H exagonal hole						
NO.	Mesh reference	Thickness	Strand width	SWD	LWD	Open area
1	HJAL-845	1.5mm	3.5mm	8.0mm	45mm	10%
2	HJAL-1050	1.5mm	2.5mm	10mm	50mm	48%
3	HJAL-1550	1.5mm	3.0mm	15mm	50mm	58%
4	HJAL-1580	3.0mm	4.0mm	15mm	80mm	45%
5	HJAL-20120	5.0mm	8.0mm	20mm	120mm	18%
6	HJAL-2570	2.5mm	5.0mm	25mm	70mm	55%
7	HJAL-25220	3.0mm	7.5mm	25mm	220mm	35%
8	HJAL-33120	3.0mm	15mm	33mm	120mm	10%
9	HJAL-34135	5.0mm	10mm	34mm	135mm	40%
10	HJAL-35230	2.0mm	15mm	35mm	230mm	12%
11	HJAL-4080	3.0mm	10mm	40mm	80mm	48%
12	HJAL-45155	3.0mm	10mm	45mm	155mm	52%
13	HJAL-55145	3.0mm	13mm	55mm	145mm	50%



HJAL-845



HJAL-1050



HJAL-1550



HJAL-1580



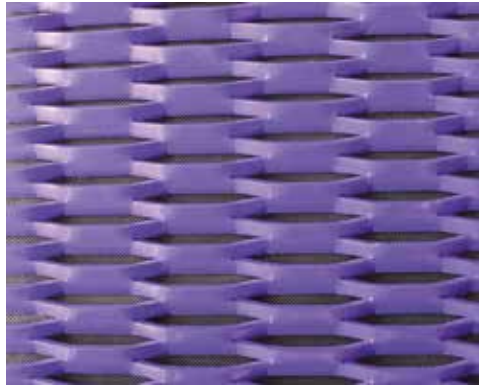
HJAL-20120



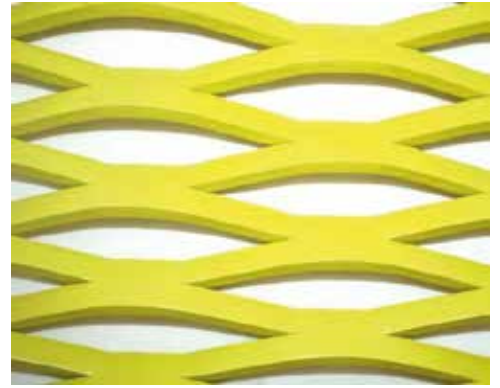
HJAL-2570



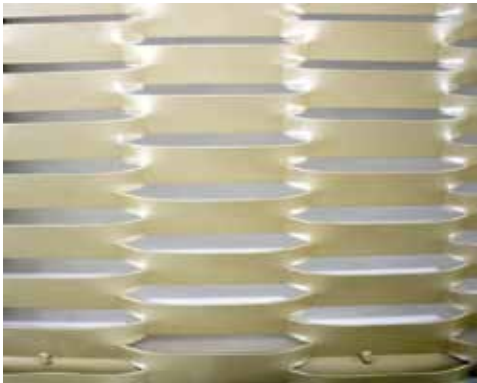
HJAL-25220



HJAL-33120



HJAL-34135



HJAL-35230



HJAL-4080

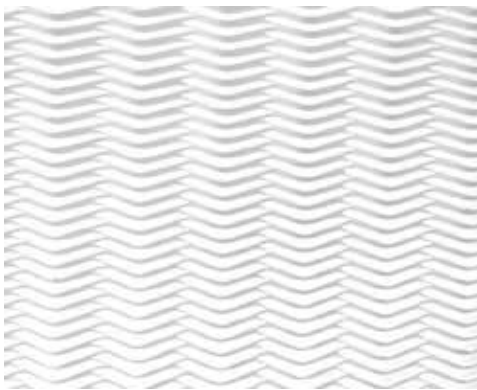


HJAL-45155



HJAL-55145

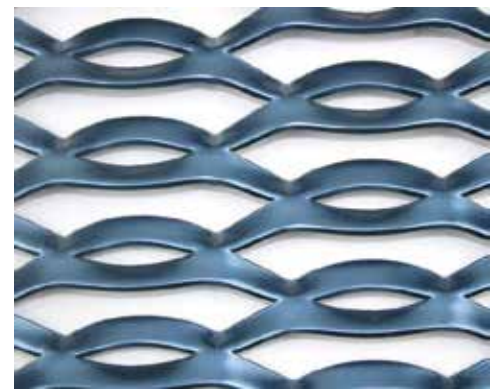
Type 3 New design						
NO.	Mesh reference	Thickness	Strand width	SWD	LWD	Open area
1	HJAX-10012	2.0mm	2.0mm	12mm	100mm	65%
2	HJAX-12100	3.0mm	3.6mm	12mm	100mm	38%
3	HJAX-30150	3.0mm	10mm	30mm	150mm	30%
4	HJAX-80200	3.0mm	29mm	80mm	200mm	54%
5	HJAX-85200	3.0mm	30mm	85mm	200mm	28%
6	HJAX-100300	3.0mm	25mm	100mm	300mm	45%



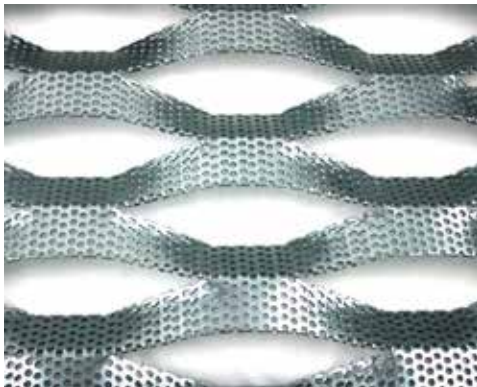
HJAX-10012



HJAX-12100



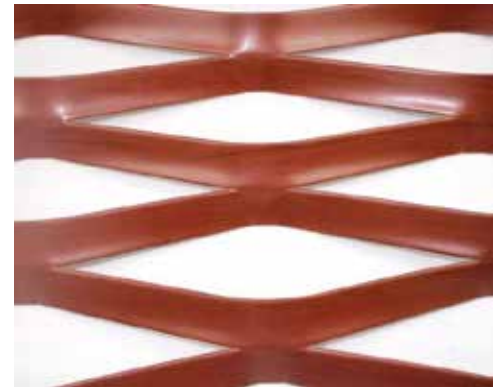
HJAX-30150



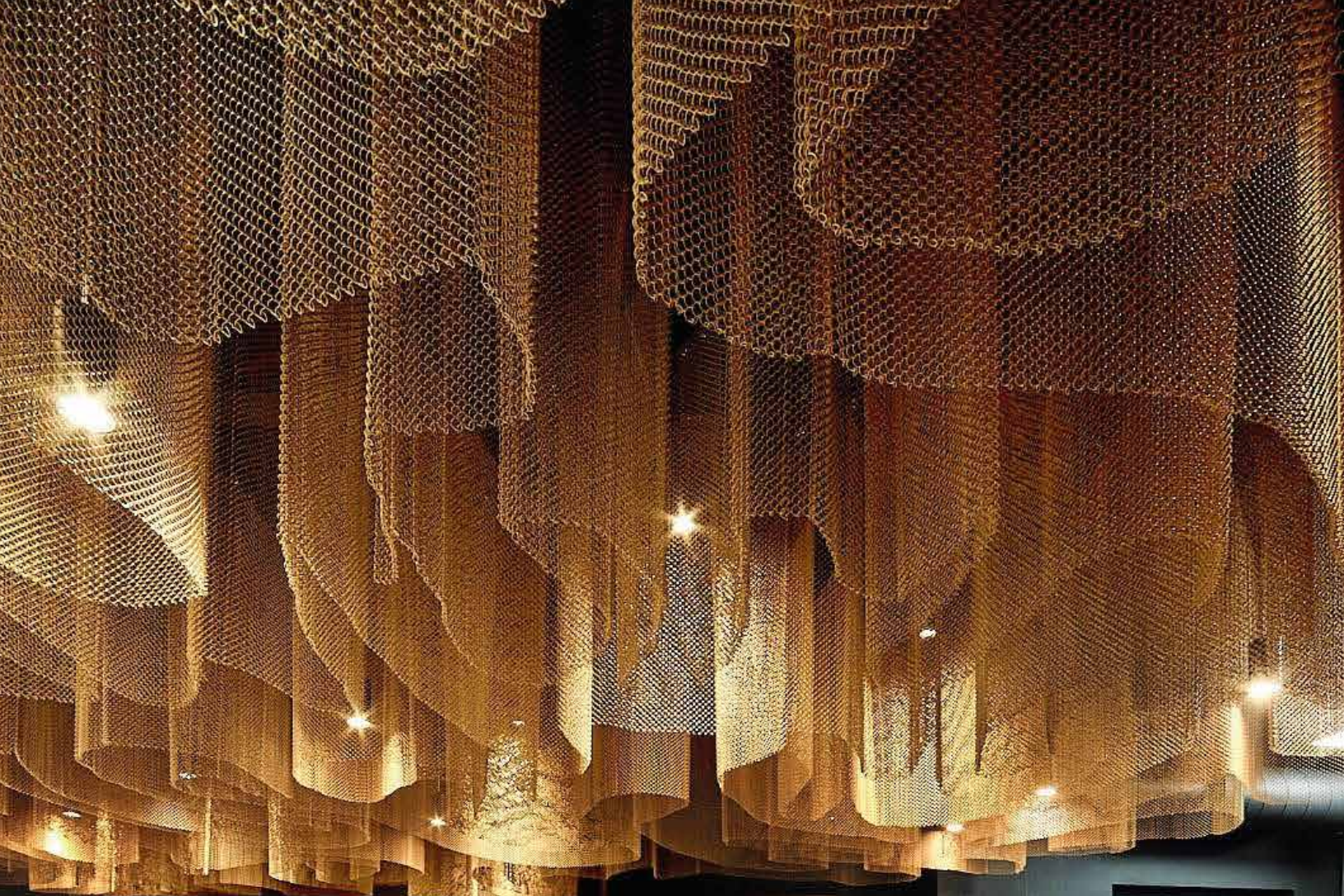
HJAX-80200



HJAX-85200



HJAX-100300



Mesh Solution

DECORATIVE WIRE MESH



NO.	Mesh reference	Material	Cable diameter	Rod diameter	Cable pitch	Rod pitch	Weight
1	HJS-X426	Cable:Stainless steel 304, 316, 316L and so on. Rod: Low carbon steel, Stainless steel 304,316,316L and so on.	0.75mm x 4pcs	1.5mm	26.4mm	3.5mm	5.2KG/m ²
2	HJS-X436		1.0mm x 4pcs	2.0mm	36mm	4.5mm	6.4 KG/m ²
3	HJS-2145		1.0mm x 5pcs	2.0mm	45mm	5.0mm	6.2 KG/m ²
4	HJS-3476		2.0mm x 4pcs	3.0mm	60mm	7.0mm	9.2 KG/m ²
5	HJS-3380		2.0mm x 3pcs	3.0mm	80mm	10mm	7.0 KG/m ²
6	HJS-4311		2.75mm x 3pcs	4.0mm	110mm	14.5mm	8.0 KG/m ²
7	HJS-4310		2.0mm x 4pcs	3.0mm	150mm	10mm	6.7 KG/m ²
8	HJS-4315		3.0mm x 3pcs	4.0mm	150mm	14.5mm	7.7 KG/m ²
9	HJS-3517	Stainless steel 304, 316, 316L and so on; brass	0.45mm x 3pcs	0.5mm	3.5mm	1.7mm	2.2 KG/m ² ; 2.4 KG/m ²
10	HJS-D215	Stainless steel 304, 316, 316L and so on	2.0mm	1.5mm	3.5mm	6.0mm	7.3 KG/m ²
11	HJS-S252		2.5mm	2.0mm	6.0mm	8.0mm	7.2 KG/m ²
12	HJS-D252		2.5mm	2.0mm	6.0mm	8.0mm	7.2 KG/m ²
13	HJS-M175		2.0mm	1.5mm	17.5mm	0mm	10.6 KG/m ²
14	HJS-G175		2.0mm	1.5mm	17.5mm	3.5mm	5.2 KG/m ²



HJS-X426



HJS-X436



HJS-2145



HJS-3476



HJS-3380



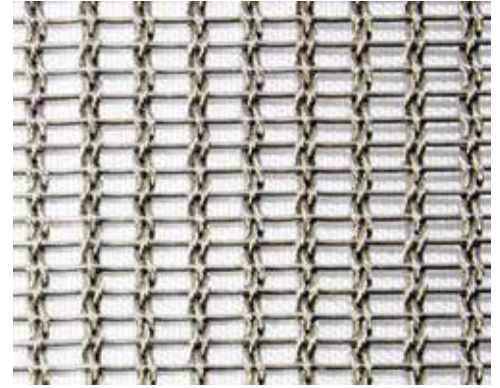
HJS-4311



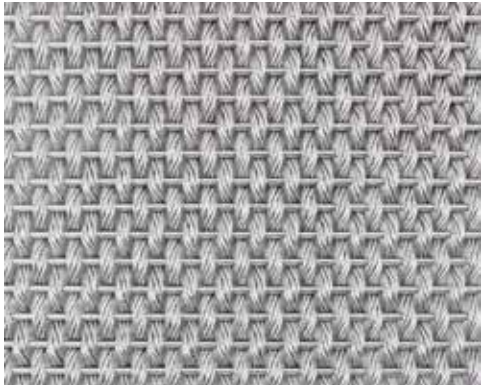
HJS-4310



HJS-4315



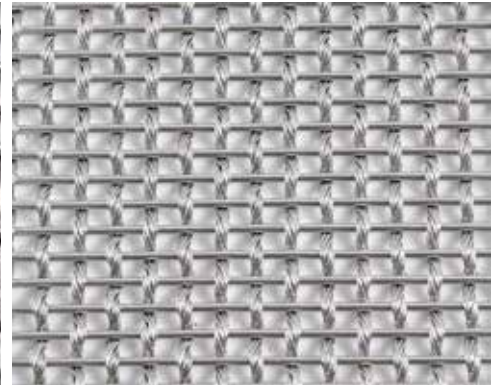
HJS-3517



HJS-D215



HJS-S252



HJS-D252

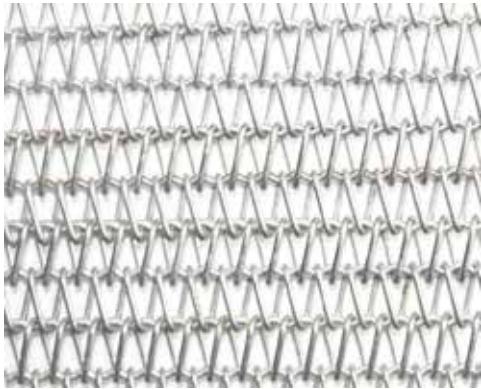


HJS-M175

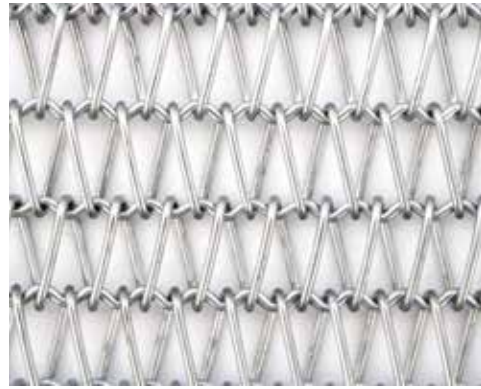


HJS-G175

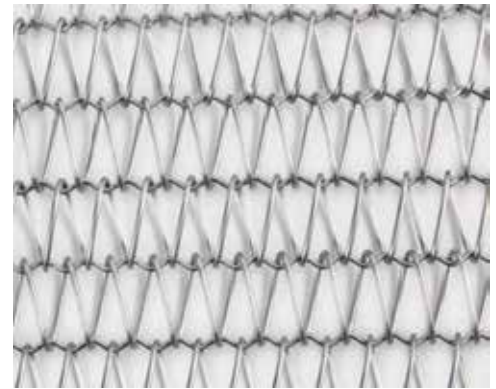
Type 1 Round Wire							
NO.	Mesh Reference	Material	Spiral diameter	Crossed rod diameter	Spiral pitch	Crossed rod pitch	Weight
1	HJL-0407	Stainless steel 201,304,316, 316L and so on; Low carbon steel	0.9mm	1.0mm	4mm	7mm	4.5 KG/m ²
2	HJL-0613		1.2mm	1.5mm	6mm	13mm	4.5 KG/m ²
3	HJL-0816		1.2mm	1.2mm	8mm	16mm	3.3 KG/m ²
4	HJL-1215		1.8mm	2.0mm	12mm	15mm	6.0 KG/m ²
5	HJL-2012		1.5mm	2.0mm	12mm	20mm	4.5 KG/m ²
6	HJL-1220		1.5mm	1.5mm	12mm	20mm	3.5 KG/m ²
7	HJL-2030		1.5mm	2.0mm	20mm	30mm	3.5 KG/m ²
8	HJL-2032		1.5mm	2.0mm	20mm	32mm	3.2 KG/m ²
9	HJL-3040		3.0mm	3.0mm	30mm	40mm	7.5 KG/m ²



HJL-0407



HJL-0613



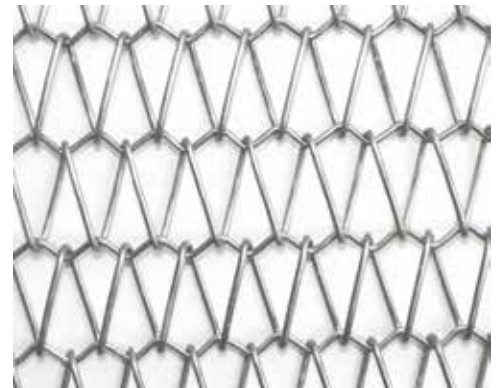
HJL-0816



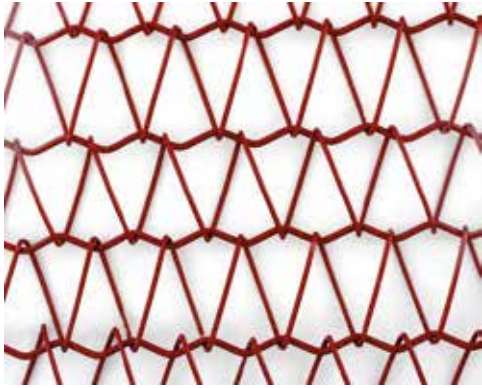
HJL-1215



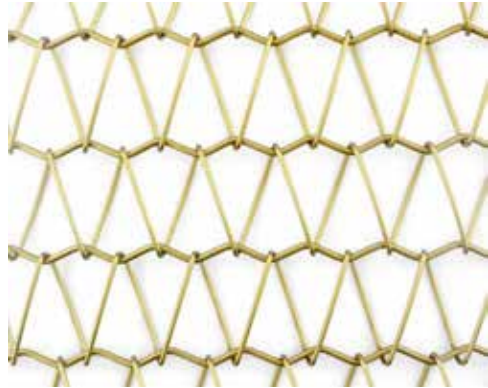
HJL-2012



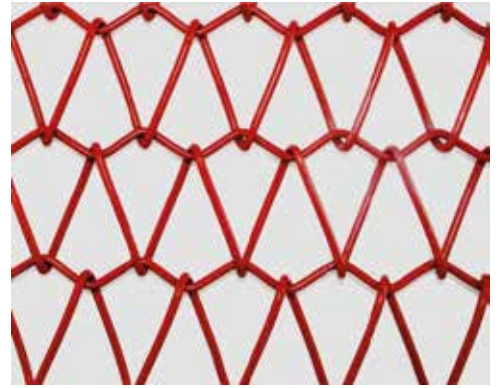
HJL-1220



HJL-2030



HJL-2032



HJL-3040

Type 2 Flat Wire							
NO.	Mesh Reference	Material	Spiral thickness x width	Crossed rod diameter	Spiral pitch	Crossed rod pitch	Weight
1	HJL-0812	Stainless steel 201,304, 316, 316L and so on; Low carbon steel	1.0mm x 1.6mm	1.5mm	8mm	12mm	6.0 KG/m ²
2	HJL-1308		1.0mm x 1.6mm	1.2mm	13mm	8.0mm	3.0 KG/m ²
3	HJL-4112		1.0mm x 4.0mm	2.0mm	13mm	12mm	11.0KG/m ²
4	HJL-1118		1.4mm x 2.3mm	2.0mm	11mm	18mm	7.5 KG/m ²
5	HJL-1223		1.4mm x 2.3mm	2.0mm	12mm	23mm	6.5 KG/m ²
6	HJL-4125		1.0mm x 4.0mm	2.0mm	15mm	25mm	7.5 KG/m ²
7	HJL-4128		1.0mm x 4.0mm	2.0mm	15mm	28mm	7.2 KG/m ²
8	HJL-1550		1.0mm x 5.0mm	5.0mm	15mm	50mm	10 KG/m ²
9	HJL-4142		1.0mm x 4.0mm	2.0mm	19mm	42mm	4.5 KG/m ²
10	HJL-4030		1.0mm x 4.0mm	3.0mm	30mm	40mm	4.0 KG/m ²
11	HJL-5145		1.0mm x 5.0mm	3.0mm	30mm	45mm	3.5 KG/m ²
12	HJL-3860		1.5mm x 5.5mm	3.0mm	38mm	60mm	4.5 KG/m ²



HJL-0812



HJL-1308



HJL-4112



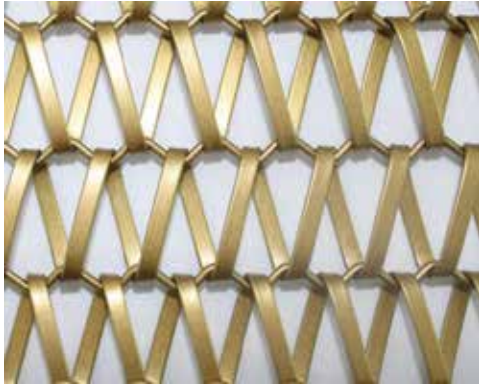
HJL-1118



HJL-1223



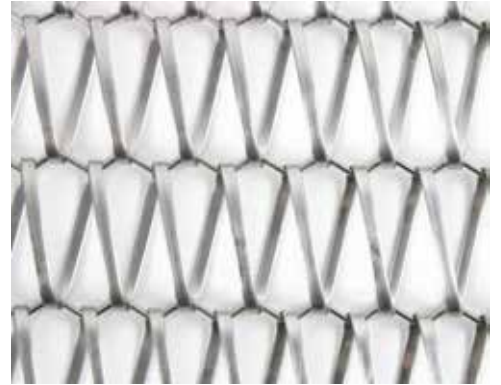
HJL-4125



HJL-4128



HJL-1550



HJL-4142



HJL-4030



HJL-5145



HJL-3860

Type 1 Metal Coil Drapery

Mesh reference	Material	Surface treatment	Wire diameter	Hole size	Weight
HJG-0104	Aluminum; low carbon steel; stainless steel; brass	Spraying painting	1.0mm	4.0mm	3.5 KG/m ²
HJG-0106			1.0mm	6.0mm	3.5 KG/m ²
HJG-1204			1.2mm	4.0mm	2.5 KG/m ²
HJG-1206			1.2mm	6.0mm	1.35 KG/m ²
HJG-1609			1.6mm	9.0mm	1.75 KG/m ²
HJG-1885			1.8mm	8.5mm	3.0 KG/m ²
HJG-2085			2.0mm	8.5mm	2.1 KG/m ²



HJG-0104



HJG-0106



HJG-1204



HJG-1206



HJG-1609

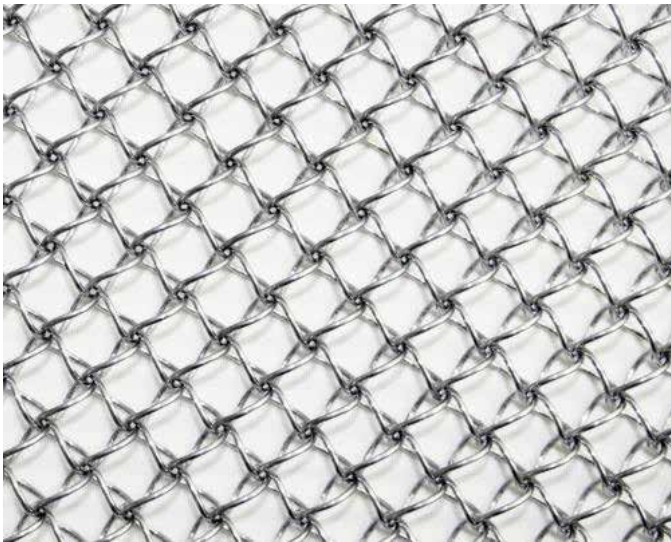


HJG-1885

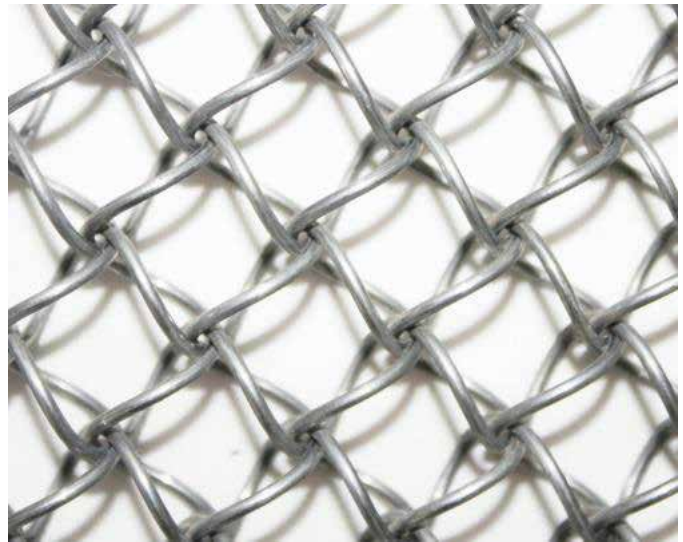


HJG-2805

Type 2 Spherical mesh							
NO.	Mesh reference	Material	Wire diameter	Hole size	Spiral pitch	spherical pore	Weight
1	HJG-0808	Aluminum; low carbon steel; stainless steel;	1.0mm	7.0mm	12.5mm	8mm x 8mm	5.0 KG/m ²
2	HJG-1111		1.4mm	10mm	18.5mm	11mm x 11mm	6.0 KG/m ²



HJG-0808



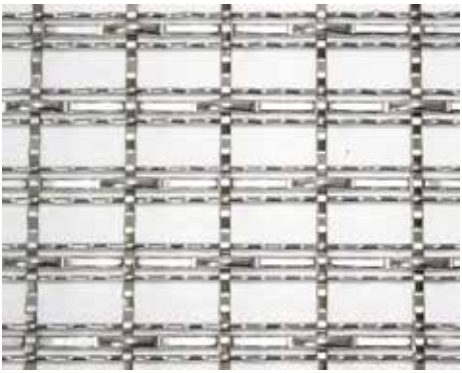
HJG-1111



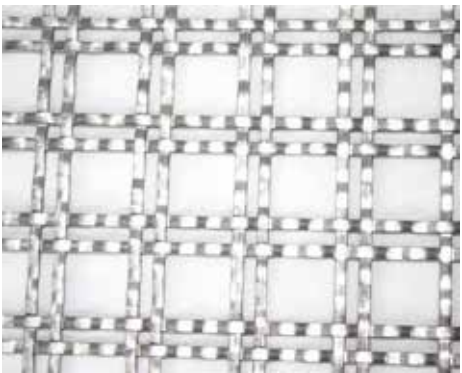
Mesh reference: HJ Z-4150
 Material: Low carbon steel; Stainless steel 201,304,316,316L and so on.
 Round wire diameter: 1.5mm
 Round wire pitch : 5.0mm
 Flat wire (thickness x width) : 1mm x 4mm
 Flat wire pitch: 50mm
 Weight: 5.0 KG/m²



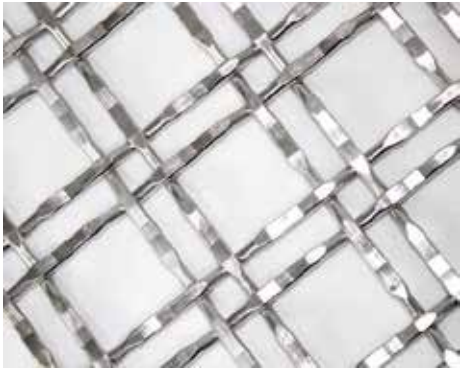
Mesh reference: HJ Z-4150(w)
 Material: Low carbon steel; Stainless steel 201,304,316,316L and so on.
 Round wire diameter: 1.5mm
 Round wire pitch : 5.0mm
 Flat wire (thickness x width) : 1mm x 4mm
 Flat wire pitch: 50mm
 Weight: 5.0 KG/m²



Mesh reference: HJ Z-2125
 Material: Low carbon steel; Stainless steel 201,304,316,316L and so on.
 Round wire diameter: 3.5mm; 1.5mm
 Round wire pitch : 21mm
 Flat wire (thickness x width) : 1.5mm x 3mm
 Flat wire pitch: 50mm
 Weight: 6.2 KG/m²



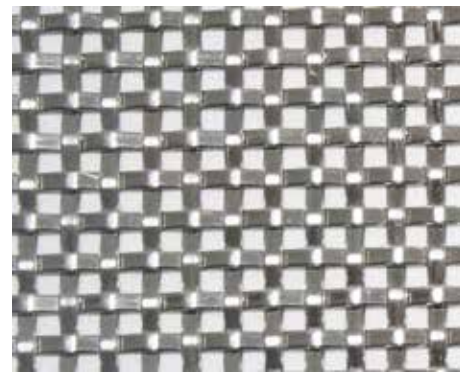
Mesh reference: HJ Z-1603
 Material: Low carbon steel; Stainless steel 201,304,316,316L and so on.
 Flat wire (thickness x width) : 1 mm x 3mm
 Big hole size : 16mm
 Small hole size: 3mm
 Weight: 3.8 KG/m²



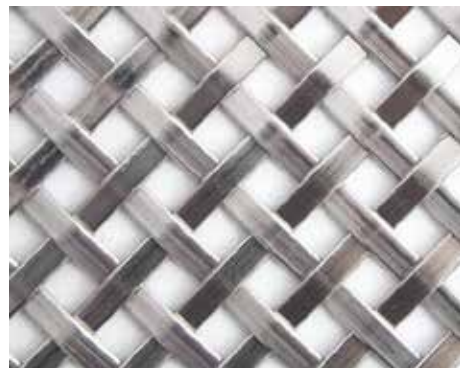
Mesh reference: HJ Z-2809
 Material: Low carbon steel; Stainless steel 201,304,316,316L and so on.
 Wire diameter: 4.0mm
 Big hole size : 28mm
 Small hole size : 9mm
 Weight: 8.2 KG/m²



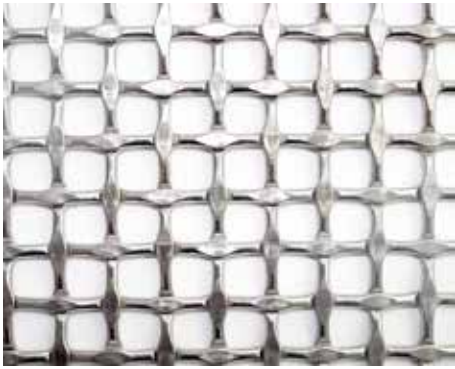
Mesh reference: HJ Z-3105
 Material: Low carbon steel; Stainless steel 201,304,316,316L and so on.
 Flat wire (thickness x width) : 1mm x 2.85mm
 Hole size : 5mm
 Weight: 4.8 KG/m²



Mesh reference: HJ Z-1253
 Material: Low carbon steel; Stainless steel 201,304,316,316L and so on.
 Flat wire (thickness x width) : 1mm x 2.5mm
 Hole size : 3mm
 Weight: 7.2 KG/m²



Mesh reference: HJ Z-1405
 Material: Low carbon steel; Stainless steel 304,316,316L and so on.
 Flat wire (thickness x width) : 1mm x 3mm
 Hole size : 5mm
 Weight: 6.58 KG/m²



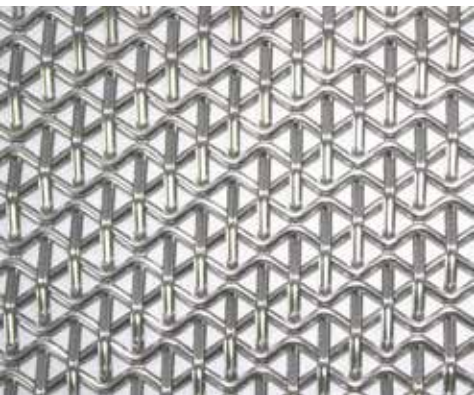
Mesh reference: HJ Z-1174
 Material: Low carbon steel; Stainless steel 201,304,316,316L and so on.
 Round wire diameter: 1mm
 Flat wire (thickness x width) : 1mm x 4mm
 Hole size : 7mm x 4mm
 Weight: 5.2 KG/m²



Mesh reference: HJ Z-1003
 Material: Stainless steel 201,304,316,316L and so on.
 Wide wire (thickness x width): 1mm x 10mm
 Thin wire (thickness x width) : 1.3mm x 3mm
 Hole size : 19mm
 Weight: 6.2 KG/m²



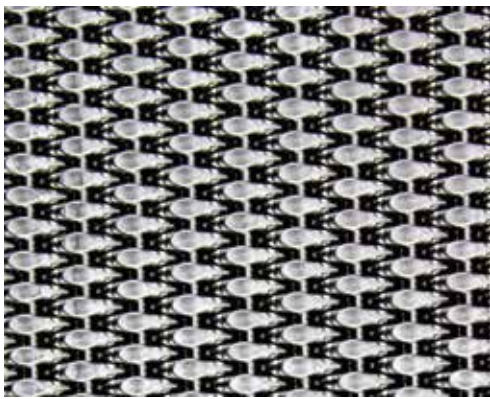
Mesh reference: HJ Z-2204
 Material: Stainless steel 304,316,316L and so on.
 Single wire : 1.5mm
 Single wire pitch : 22mm
 Convex wire : 2mm
 Convex wire pitch: 4mm
 Weight: 7.0 KG/m²



Mesh reference: HJ Z-0506
 Material: Stainless steel 201,304,316,316L and so on.
 Single wire : 1.5mm x 10mm
 Single wire pitch : 5mm
 Round wire diameter: 2mm
 Round wire pitch: 6mm
 Hole size : 19mm
 Weight: 12.7 KG/m²



Mesh reference: HJ Z-1608
 Material: Stainless steel 201,304,316,316L and so on.
 Round wire diameter: 1.0mm x 3pcs
 Round wire pitch : 16mm
 Flat wire (thickness x width) : 1mm x 4mm
 Flat wire pitch: 8mm
 Weight: 5.2 KG/m²



Mesh reference: HJ Z-1515
 Material: Low carbon steel; Brass; Aluminum; Stainless steel 304,316, 316L and so on.
 Flat wire : 1.5mm
 Flat wire pitch: 1.5mm
 Round wire : 1.5mm
 Round wire pitch : 5mm
 Weight: 12.5 KG/m²

Mesh Solution

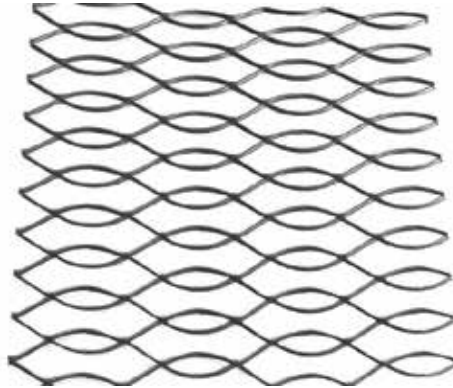
SPECIFICATION OF POPULAR EXPANDED METAL



NO.	Mesh reference	Type		Thickness	Strand width	SWD	LWD	Weight		
		Standard	Flat					Low carbon steel	aluminum	stainless steel
1	HJE-24110	Standard		2.7mm	4.0mm	24mm	110mm	7.0 KG/m ²		
2	HJE-7627	Standard		5.0mm	8.0mm	27mm	76mm	23.2 KG/m ²		
3	HJE-34135	Standard		5.0mm	8.1mm	34mm	135mm	18.5 KG/m ²		
4	HJE-36100	Standard		5.5mm	80mm	36mm	100mm	19.2 KG/m ²		
5	HJE-40135	Standard		3.0mm	3.2mm	40mm	135mm	3.70 KG/m ²		
6	HJE-274080	Standard		2.5mm	3.0mm	27mm	40mm, 80mm	4.35 KG/m ²		
7	HJE-8516	Standard	Flat	1.0mm	1.7mm	8.5mm	16mm	3.0 KG/m ²	1.0 KG/m ²	3.05 KG/m ²
8	HJE-8525	Standard		1.2mm	2.12mm	8.5mm	25mm	1.5 KG/m ²	0.55 KG/m ²	1.52 KG/m ²
9	HJE-12730	Standard	Flat	1.5mm	2.0mm	30mm	12.7mm	1.25 KG/m ²	3.65 KG/m ²	3.70 KG/m ²
10	HJE-3476	Standard	Flat	5.0mm	3.6mm	12mm	100mm	19.2 KG/m ²	4.2 KG/m ²	12.2 KG/m ²
11	HJE-23550	Standard	Flat	3.0mm	3.9mm	23.5mm	50mm	7.7 KG/m ²	2.6 KG/m ²	7.85 KG/m ²
12	HJE-25457	Standard	Flat	3.5mm	4.2mm	25.4mm	57mm	9.0 KG/m ²	3.1 KG/m ²	9.1 KG/m ²
13	HJE-510	Standard								
14	HJE-1552	Standard								
15	HJE-30150	Standard	Flat							



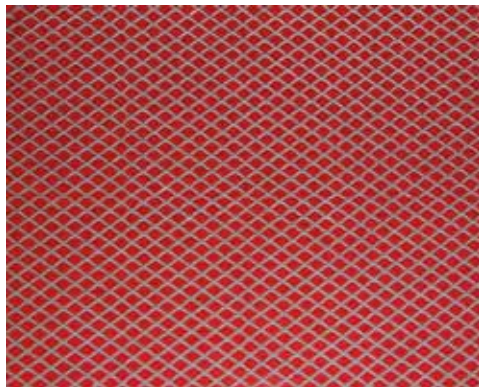
HJE-24110



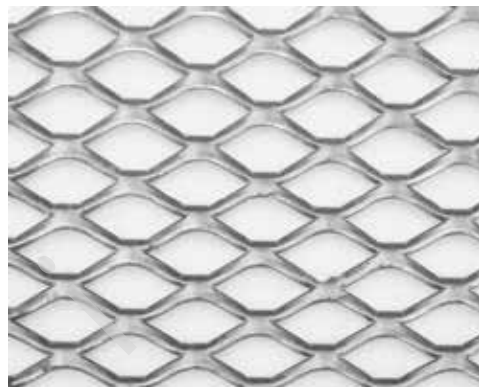
HJE-30150



HJE-40135



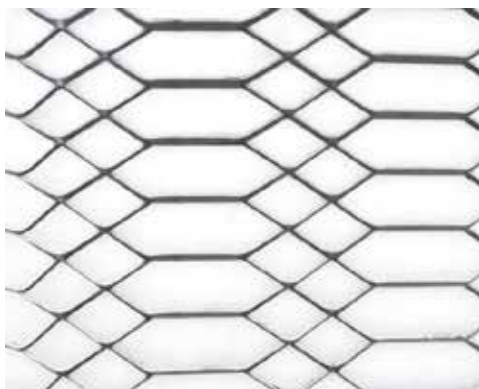
HJE-510



HJE-8516



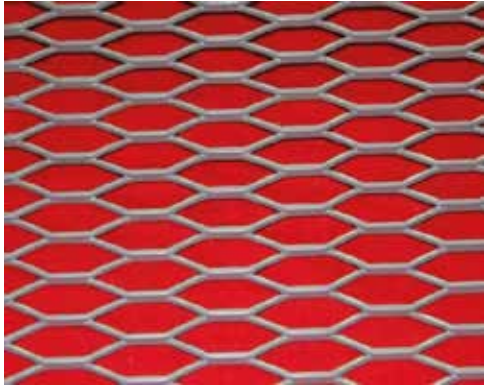
HJE-8525



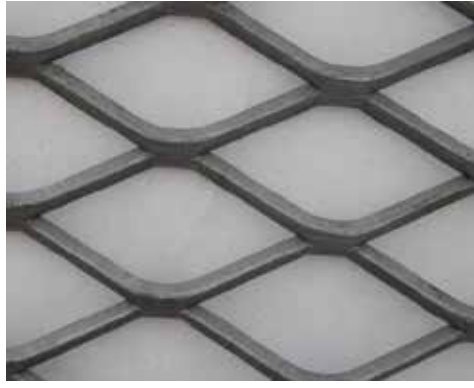
HJE -274080



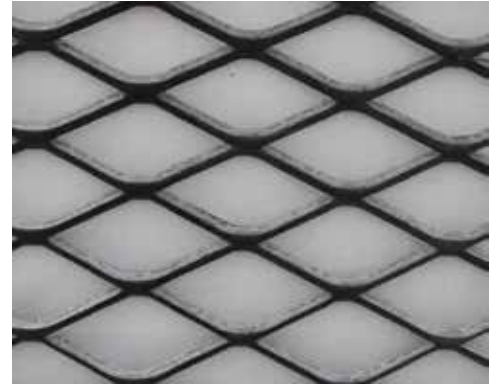
HJE-12730



HJE-1552



HJE-23550



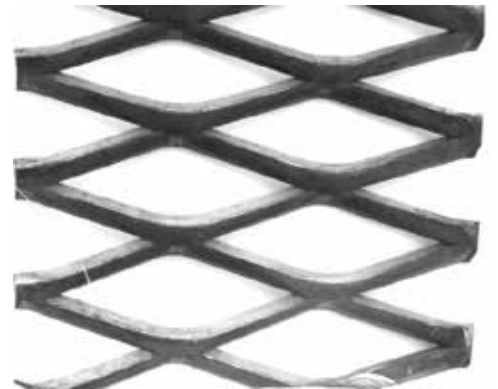
HJE-25457



HJE-3476



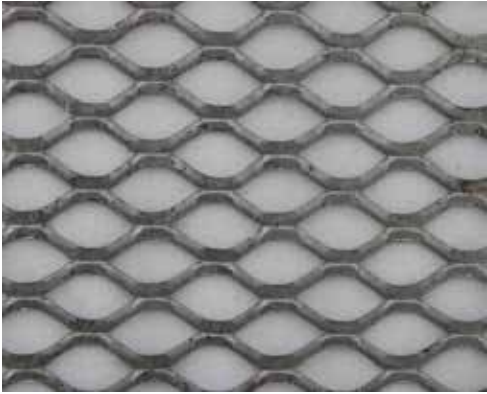
HJE-34135



HJE-36100



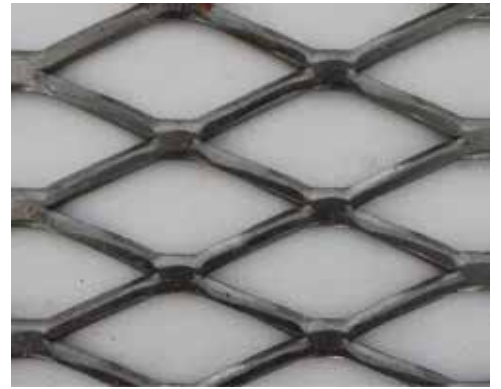
HJE-7627



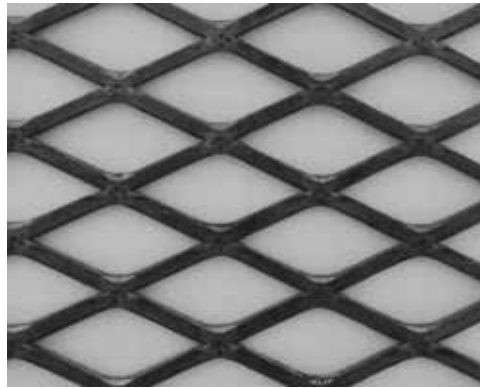
HJE-8516



HJE-12730



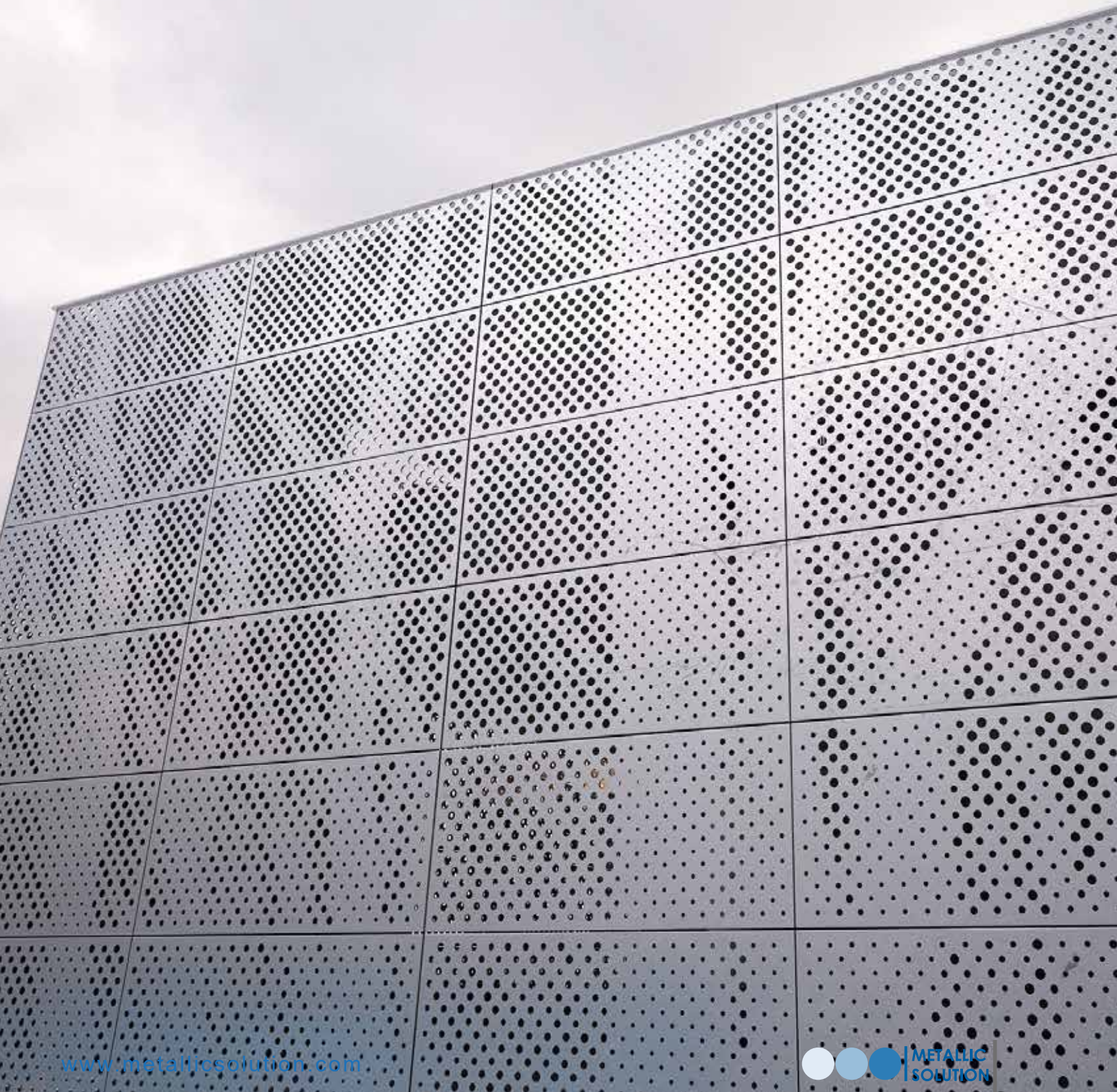
HJE-23550



HJE-25457

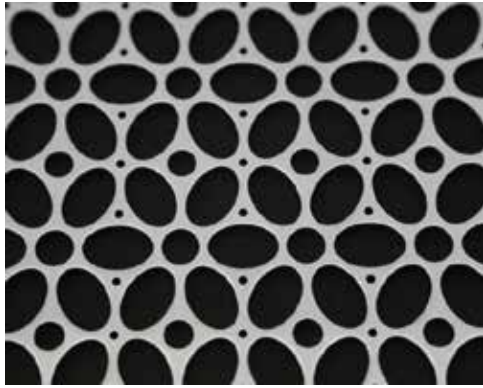
Mesh **Solution**

LASER CUT SHEET

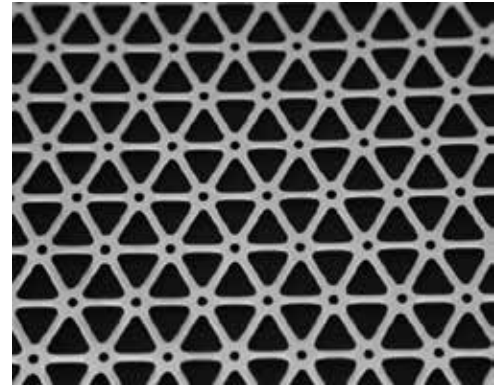




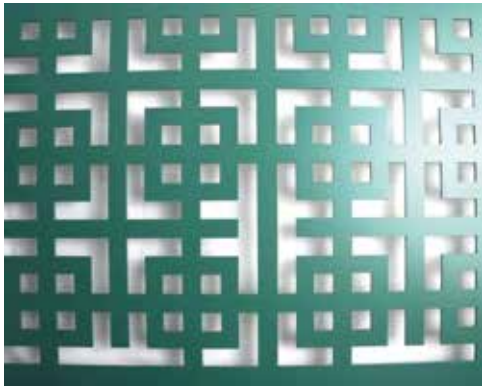
HJJ-2506



HJJ-3020



HJJ-2530



HJJ-2518



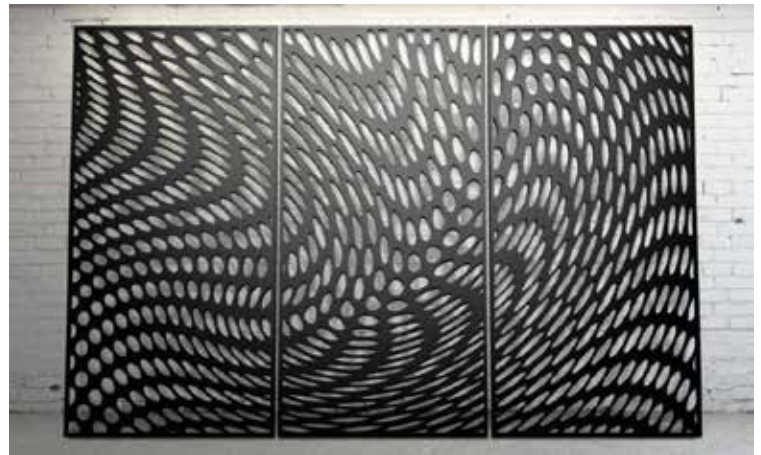
HJJ-1825



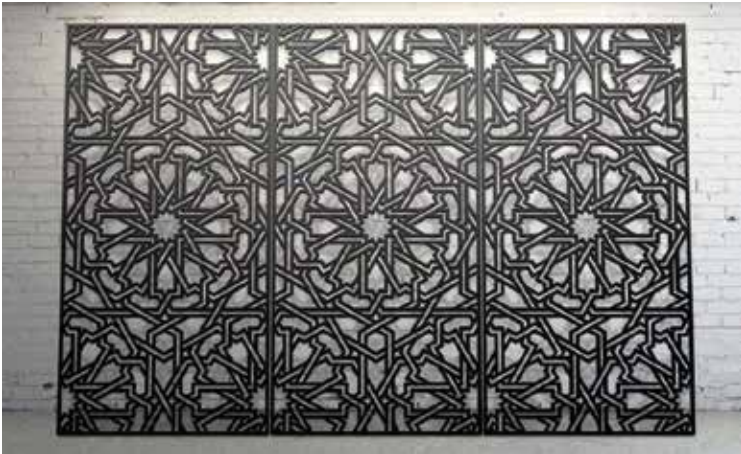
HJJ-2540



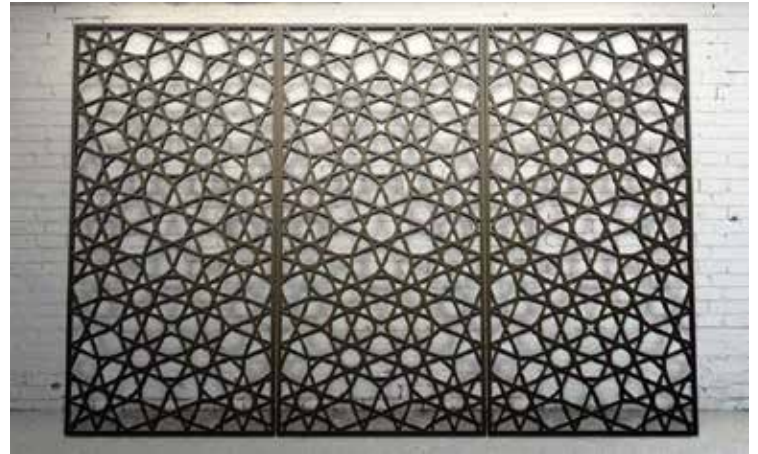
HJJ-7513



HJJ-2214



HJJ-2215



HJJ-2216



HJJ-2201



HJJ-7806



HJJ-7803



HJJ-7802



HJJ-7804



HJJ-7510



HJJ-2208



HJJ-7511



HJJ-2212



HJJ-2207



HJJ-7505



HJJ-7509



HJJ-7818



HJJ-7819



HJJ-7820



HJJ-7821



HJJ-7822



HJJ-7523



HJJ-2224



HJJ-2225



HJJ-7526



HJJ-7527



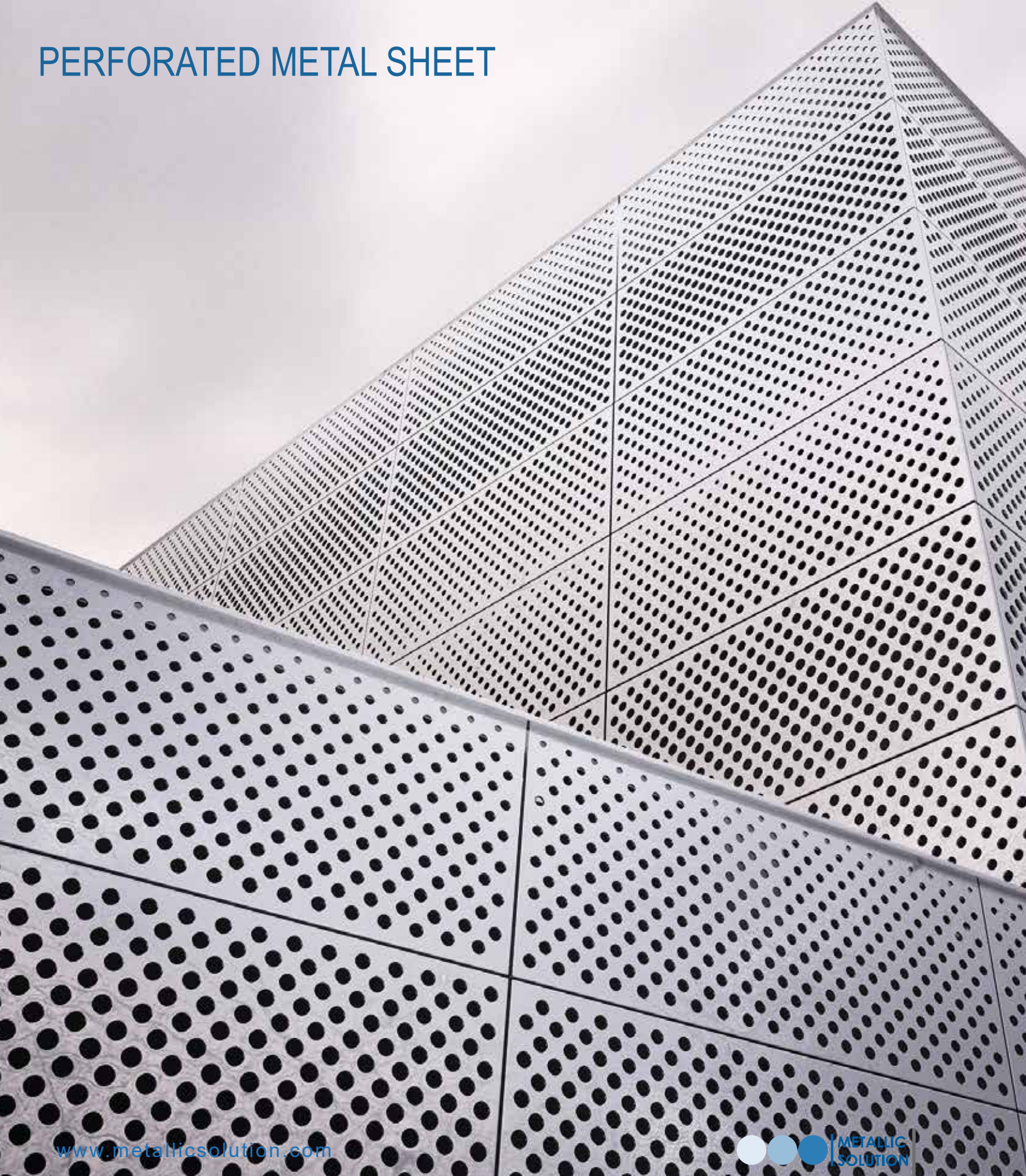
HJJ-7528



HJJ-7529

Mesh **Solution**

PERFORATED METAL SHEET



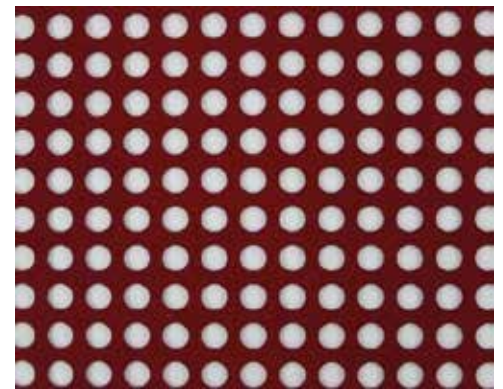
NO.	Mesh reference	Material	Surface treatment	Thickness	Hole Type	Hole Size	Hole Pitch	Weight
1	HJC-0569	Aluminum	Mill finish	1.5mm	round 60°	5.0mm	6.9mm	2.13 KG/m ²
2	HJC-0378	Aluminum	Powder coating	3mm	round 60°	7.8mm	11.3mm	4.62 KG/m ²
3	HJC-1015	Aluminum	Painting	2mm	round 90°	10mm	15mm	3.52 KG/m ²
4	HJC-1016	Aluminum	Painting	2mm	round 90°	10mm	16mm	3.50 KG/m ²
5	HJC-2030	Aluminum	PVDF	3mm	round 60°	20mm	30mm	4.85 KG/m ²
6	HJC-2560	Aluminum	PVDF	2.5mm	round 60°	30mm	60mm	5.28 KG/m ²
7	HJC-2530	Aluminum	Powder coating	2.5mm	triangle	30mm	12mm	5.08 KG/m ²
8	HJC-0887	Iron	Mill finish	1mm	hexagonal	8.0mm	8.7mm	0.69 KG/m ²
9	HJC-256065	Aluminum	Powder coating	1.5mm	hexagonal	25mm x 60mm	16mm	4.5 KG/m ²
10	HJC-2020	Aluminum	Powder coating	2.5mm	rectangle	20mm x 20mm	60mm	6.04 KG/m ²
11	HJC-2545	Aluminum	Powder coating	2.5mm	diamond	30mm x 45mm	12mm	4.56 KG/m ²
12	HJC-1515	Aluminum	Powder coating	2mm	square 60°	15mm x 15mm	25mm	3.36 KG/m ²
13	HJC-0225	Aluminum	Painting	2mm	square 90°	15mm x 15mm	25mm	3.47 KG/m ²
14	HJC-2009	Aluminum	Powder coating	2mm	slotted	20mm x 10mm	9mm	3.54 KG/m ²
15	HJC-2552	Aluminum	Powder coating	2.5mm	slotted	40mm x 20mm	52mm	4.75 KG/m ²
16	HJC-5012	Aluminum	PVDF	3mm	slotted	50mm x 12mm	12mm	5.45 KG/m ²
17	HJC-0103	SS 304	Mill finish	1mm	round	3.0mm		5.33 KG/m ²
18	HJC-0603	SS 304	Mill finish	1mm	round	6.0mm; 3.0mm		4.78 KG/m ²



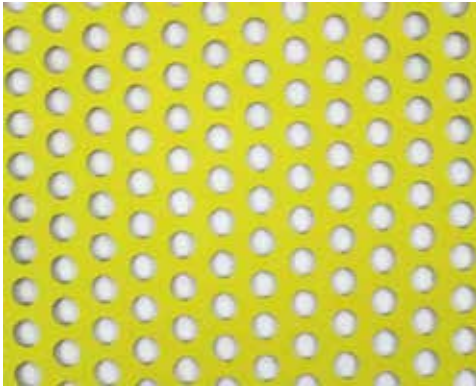
HJC-0569



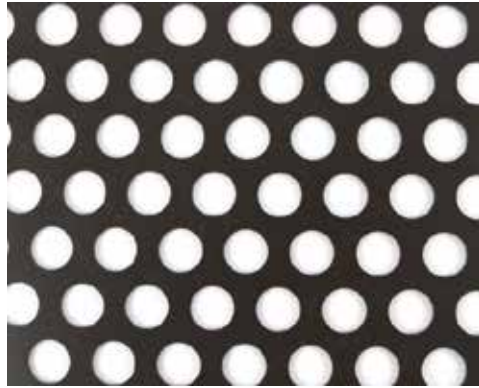
HJC-0378



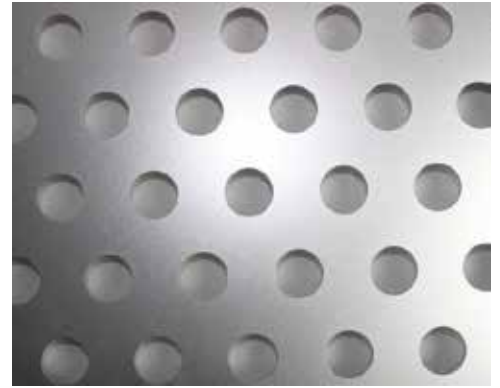
HJC-1015



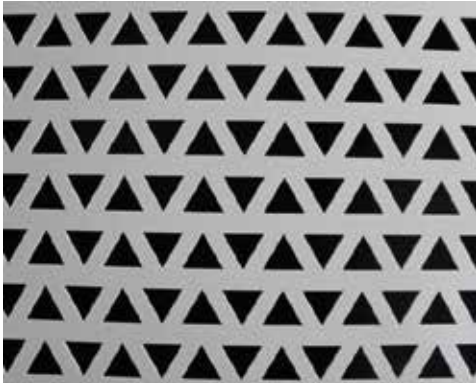
HJC-1016



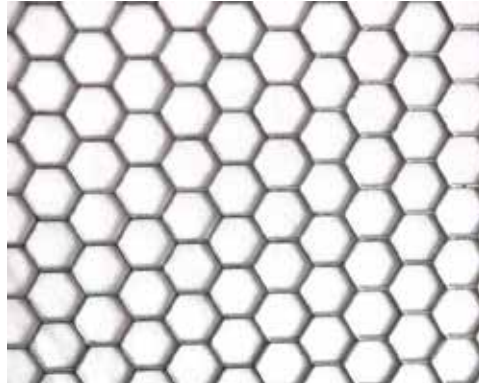
HJC-2030



HJC-2560



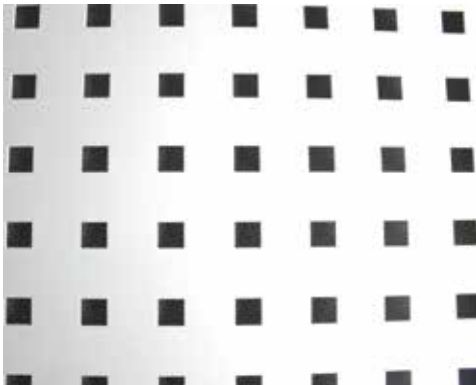
HJC-2530



HJC-0887



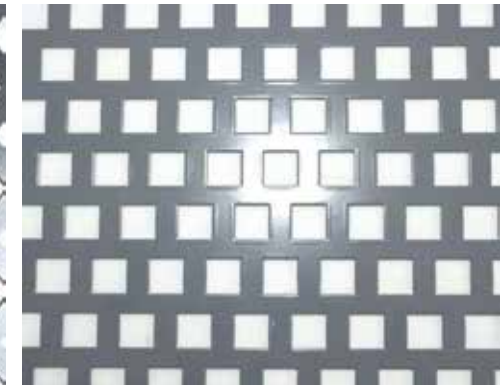
HJC-256065



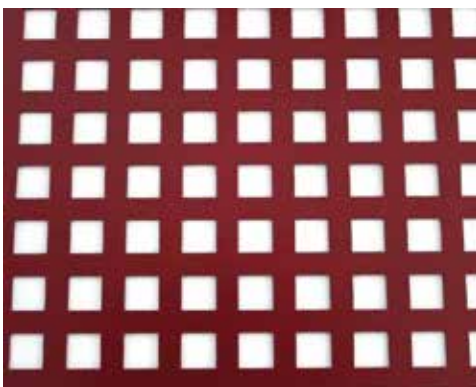
HJC-2020



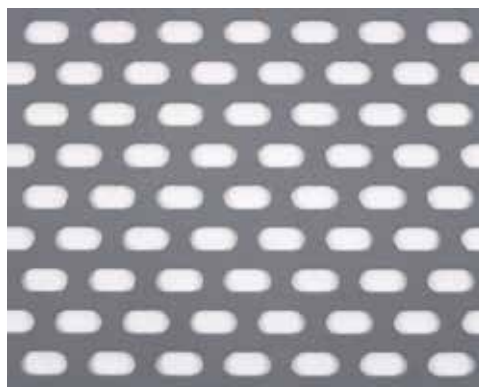
HJC-2545



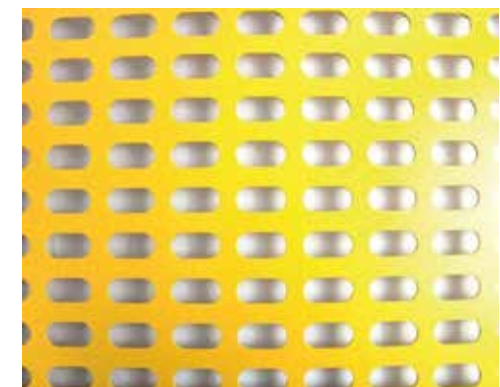
HJC-1515



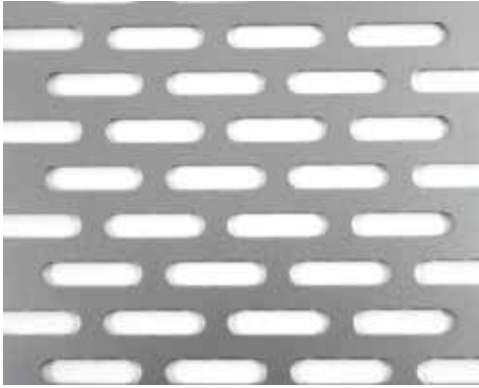
HJC-0225



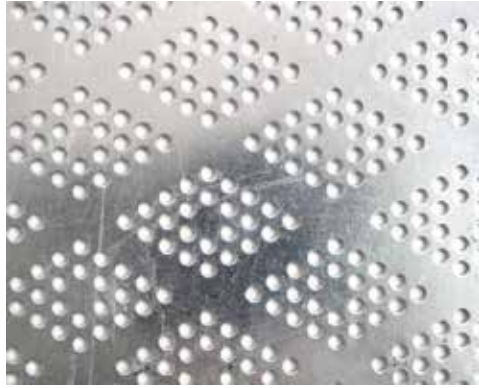
HJC-2009



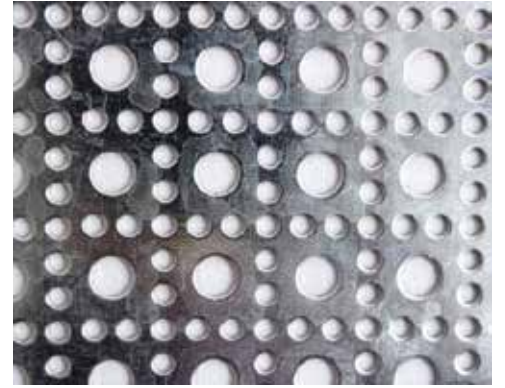
HJC-2552



HJC-5012



HJC-0103



HJC-0603

Mesh **Solution**

SAFETY GRATING



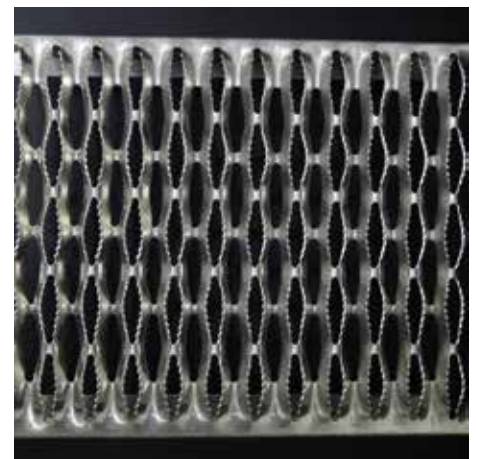
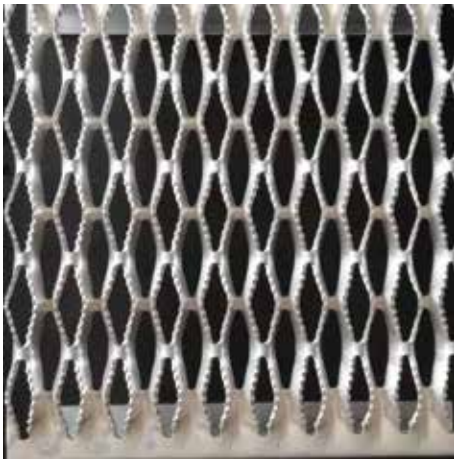
2 Diamond 9-1/4" Width				
Diamond Pattern	Width	Channel Depth	Galvanized	Aluminum
2 Diamonds	9-1/4"	2"	11Ga,10Ga,9Ga	12Ga(.080"),10Ga(.100")
	9-1/4"	2'-1/2"	11Ga,10Ga,9Ga	12Ga(.080"),10Ga(.100")
	9-1/4"	3"	11Ga,10Ga,9Ga	12Ga(.080"),10Ga(.100")
	9-1/4"	4"	11Ga,10Ga,9Ga	12Ga(.080"),10Ga(.100")



3 Diamond 13-3/4" Width				
Diamond Pattern	Width	Channel Depth	Galvanized	Aluminum
3 Diamonds	13-3/4"	2"	11Ga,10Ga,9Ga	12Ga(.080"),10Ga(.100")
	13-3/4"	2'-1/2"	11Ga,10Ga,9Ga	12Ga(.080"),10Ga(.100")
	13-3/4"	3"	11Ga,10Ga,9Ga	12Ga(.080"),10Ga(.100")
	13-3/4"	4"	11Ga,10Ga,9Ga	12Ga(.080"),10Ga(.100")



5 Diamond 23-1/4" Width				
Diamond Pattern	Width	Channel Depth	Galvanized	Aluminum
5 Diamonds	13-3/4"	2"	11Ga,10Ga,9Ga	12Ga(.080"),10Ga(.100")
	13-3/4"	2'-1/2"	11Ga,10Ga,9Ga	12Ga(.080"),10Ga(.100")
	13-3/4"	3"	11Ga,10Ga,9Ga	12Ga(.080"),10Ga(.100")
	13-3/4"	4"	11Ga,10Ga,9Ga	12Ga(.080"),10Ga(.100")



6 Diamond 27-3/4" Width				
Diamond Pattern	Width	Channel Depth	Galvanized	Aluminum
6 Diamonds	27-3/4"	2"	11Ga,10Ga,9Ga	12Ga(.080"),10Ga(.100")
	27-3/4"	2'-1/2"	11Ga,10Ga,9Ga	12Ga(.080"),10Ga(.100")
	27-3/4"	3"	11Ga,10Ga,9Ga	12Ga(.080"),10Ga(.100")
	27-3/4"	4"	11Ga,10Ga,9Ga	12Ga(.080"),10Ga(.100")

8 Diamond 36" Width				
Diamond Pattern	Width	Channel Depth	Galvanized	Aluminum
8 Diamonds	36"	2"	11Ga,10Ga,9Ga	12Ga(.080"),10Ga(.100")
	36"	2'-1/2"	11Ga,10Ga,9Ga	12Ga(.080"),10Ga(.100")
	36"	3"	11Ga,10Ga,9Ga	12Ga(.080"),10Ga(.100")
	36"	4"	11Ga,10Ga,9Ga	12Ga(.080"),10Ga(.100")

Diamond safety grating stair treads size

Material	Span inches	Gauge	Depth	Standard stair treads	Stair treads with nosing
Steel	Up to 30	14,12	1-1/2"	2 Diamonds 4-3/4" 3 Diamonds 7" 4 Diamonds 9-1/2" 5 Diamonds 11-3/4"	3 Diamonds 8- 1/8" 4 Diamonds 10-1/2"
	30-36		1-1/2"		
	36-42		1-1/2"		
	42-48		2"		
Aluminum	Up to 42	0.080"	2"		
	Up to 48	0.100"			
Stainless steel 316L	Up to 30	16	2"		
	Up to 36	16			



Diamond Safety Grating Walking Size						
Item	Material	Structure	Width	Plank Thickness	Channel Height	Clear Span
DSGW-01	Galvanized	5-diamond	24"	11G	5"	2'2'-6",3'-6",4',4'-6", 5',5'-6",6',6'-6",7', 7'-6",8',9',10',11',12'
DSGW-02	Galvanized	5-diamond	24"	10G	5"	
DSGW-03	Galvanized	5-diamond	24"	9G	5"	
DSGW-04	Aluminum alloy	5-diamond	24"	12G	5"	
DSGW-05	Aluminum alloy	5-diamond	24"	10G	5"	
DSGW-06	Galvanized	6-diamond	30"	11G	5"	
DSGW-07	Galvanized	6-diamond	30"	10G	5"	
DSGW-08	Galvanized	6-diamond	30"	9G	5"	
DSGW-09	Aluminum alloy	6-diamond	30"	12G	5"	
DSGW-10	Aluminum alloy	6-diamond	30"	10G	5"	
DSGW-11	Galvanized	8-diamond	36"	11G	5"	
DSGW-12	Galvanized	8-diamond	36"	10G	5"	
DSGW-13	Galvanized	8-diamond	36"	9G	5"	
DSGW-14	Aluminum alloy	8-diamond	36"	12G	5"	
DSGW-15	Aluminum alloy	8-diamond	36"	10G	5"	
DSGW-16	Galvanized	10-diamond	24"	14G	4-1/2"	2',2'-6",3',3'- 6",4',4'-6",5',5'-6"
DSGW-17	Galvanized	10-diamond	24"	12G	4-1/2"	2',2'-6",3',3'-6",4',4'-



1 Diamond 2-1/2" Width				
Diamond Pattern	Steel	Width	Channel Depth	Span
1 Diamond	14Ga	2-1/2"	1-1/8"	16",18",20",30",36"

2 Diamonds 4-3/4" Width					
Diamond Pattern	Width	Channel Depth	Galvanized	Aluminum	Stainless
2 Diamonds	4-3/4"	1-1/2"	14Ga,12Ga	12Ga(.080"),10Ga(.100")	N/A
2 Diamonds	4-3/4"	2"	14Ga,12Ga	12Ga(.080"),10Ga(.100")	16Ga(.062")
2 Diamonds	4-3/4"	2-1/2"	14Ga,12Ga	12Ga(.080"),10Ga(.100")	N/A

3 Diamonds 7" Width					
3 Diamonds	7"	1-1/2"	14Ga,12Ga	12Ga(.080"),10Ga(.100")	N/A
3 Diamonds	7"	2"	14Ga,12Ga	12Ga(.080"),10Ga(.100")	16Ga(.062")
3 Diamonds	7"	2-1/2"	14Ga,12Ga	12Ga(.080"),10Ga(.100")	N/A
3 Diamonds	7"	3"	12Ga	12Ga(.080"),10Ga(.100")	N/A

4 Diamonds 9-1/2" Width					
4 Diamonds	9-1/2"	1-1/2"	14Ga,12Ga	12Ga(.080"),10Ga(.100")	N/A
4 Diamonds	9-1/2"	2"	14Ga,12Ga	12Ga(.080"),10Ga(.100")	16Ga(.062")
4 Diamonds	9-1/2"	2-1/2"	N/A	12Ga(.080"),10Ga(.100")	N/A
4 Diamonds	9-1/2"	3"	12Ga	12Ga(.080"),10Ga(.100")	N/A

5 Diamonds 11-3/4" Width					
5 Diamonds	11-3/4"	1-1/2"	14Ga,12Ga	12Ga(.080"),10Ga(.100")	N/A
5 Diamonds	11-3/4"	2"	14Ga,12Ga	12Ga(.080"),10Ga(.100")	16Ga(.062")
5 Diamonds	11-3/4"	2-1/2"	14Ga,12Ga	12Ga(.080"),10Ga(.100")	N/A
5 Diamonds	11-3/4"	3"	12Ga	12Ga(.080"),10Ga(.100")	N/A

8 Diamonds 18-3/4" Width					
Diamond Pattern	Width	Channel Depth	Galvanized	Aluminum	Stainless
8 Diamonds	18-3/4"	1-1/2"	14Ga,12Ga	10Ga(.100")	N/A
8 Diamonds	18-3/4"	2"	14Ga,12Ga	10Ga(.100")	N/A
8 Diamonds	18-3/4"	2-1/2"	14Ga,12Ga	10Ga(.100")	N/A
8 Diamonds	18-3/4"	3"	14Ga,12Ga	10Ga(.100")	N/A
10 Diamonds 24" Width					
10 Diamonds	24"	2"	14Ga,12Ga	N/A	N/A
10 Diamonds	24"	3"	14Ga,12Ga	N/A	N/A



Mesh **SOLUTION**

www.metallicsolution.com