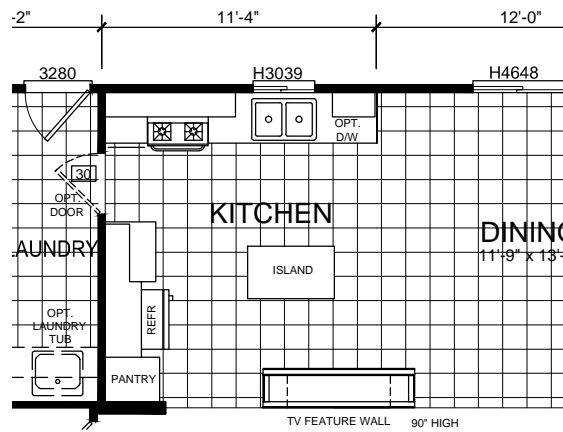
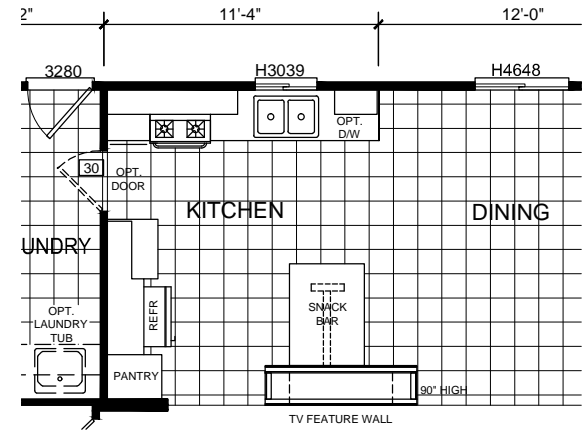


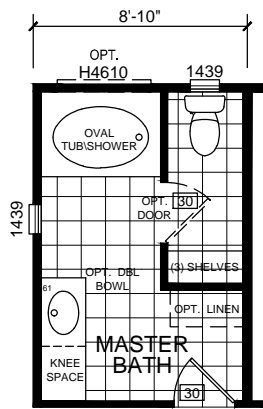
OPTIONAL MASTER BATH - B



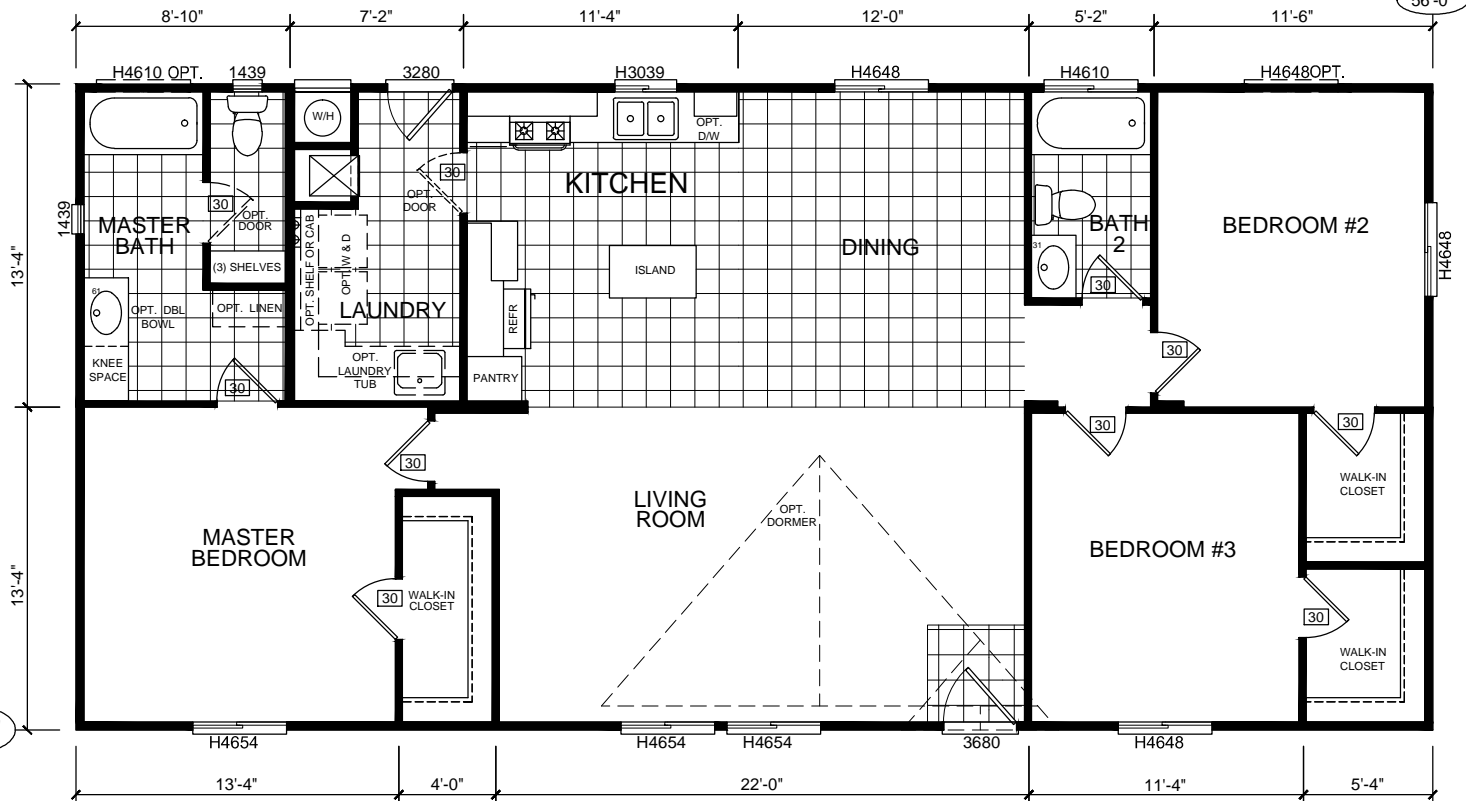
OPTIONAL KITCHEN - A



OPTIONAL KITCHEN - B



OPTIONAL MASTER BATH - A



BD-08-5627 1493 SQ. FT. 56'-0" x 26'-8"

*WINDOW SIZES SUBJECT TO CHANGE-8/3/15

Silvercrest CHAMPION
 MANUFACTURED BEAUTIFULLY™
 299 N. Smith Ave., Corona CA 92880

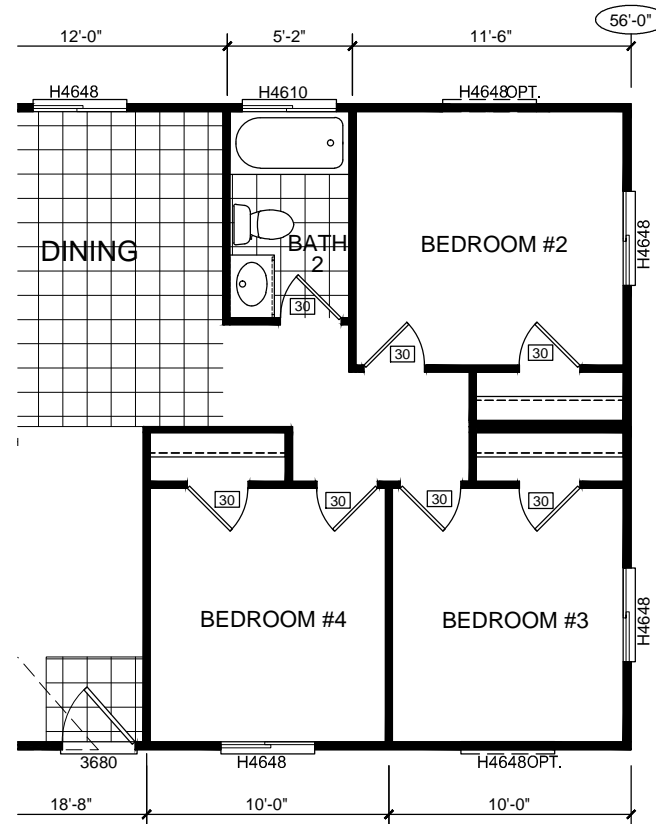
PROPRIETARY AND CONFIDENTIAL
 THESE DRAWINGS AND SPECIFICATIONS ARE ORIGINAL,
 PROPRIETARY AND CONFIDENTIAL MATERIALS OF
 CHAMPION HOME BUILDERS INC.
 COPYRIGHT © 1976-2015 BY CHAMPION

| |
|-----------------|
| APPROVER'S SEAL |
|-----------------|

| | |
|-----------------------------|--------------|
| MODIFICATIONS | BMS 3-2-11 |
| 2-SEE REV LOG FOR CHANGES | TITO 5/18/11 |
| 4A-ADDED B/M TO BD#3 @ HALL | BMS 6-15-12 |
| 6-GAS W/H | AMG 06-18-15 |
| 10-SEE REV LOG | |

| | | |
|---------------|------------------------|------------------|
| MODEL: | BD-08-5627 | |
| | 56/27-3BR | |
| TITLE: | LITERATURE PLAN | |
| DATE: 2-24-11 | SCALE: 1/8" = 1'-0" | FILENAME: |
| DRAWN BY: BMS | CHECKED BY: | BD-08-5627-LT101 |

| | |
|------------|---------------|
| SHEET NO.: | LT-101 |
| PAGE: | 1 OF 1 |



OPTIONAL BEDROOM #4

Silvercrest CHAMPION
 MANUFACTURED BEAUTIFULLY™
 299 N. Smith Ave., Corona CA 92880

PROPRIETARY AND CONFIDENTIAL
 THESE DRAWINGS AND SPECIFICATIONS ARE ORIGINAL,
 PROPRIETARY AND CONFIDENTIAL MATERIALS OF
 CHAMPION HOME BUILDERS INC.
 COPYRIGHT © 1976-2015 BY CHAMPION

APPROVER'S SEAL

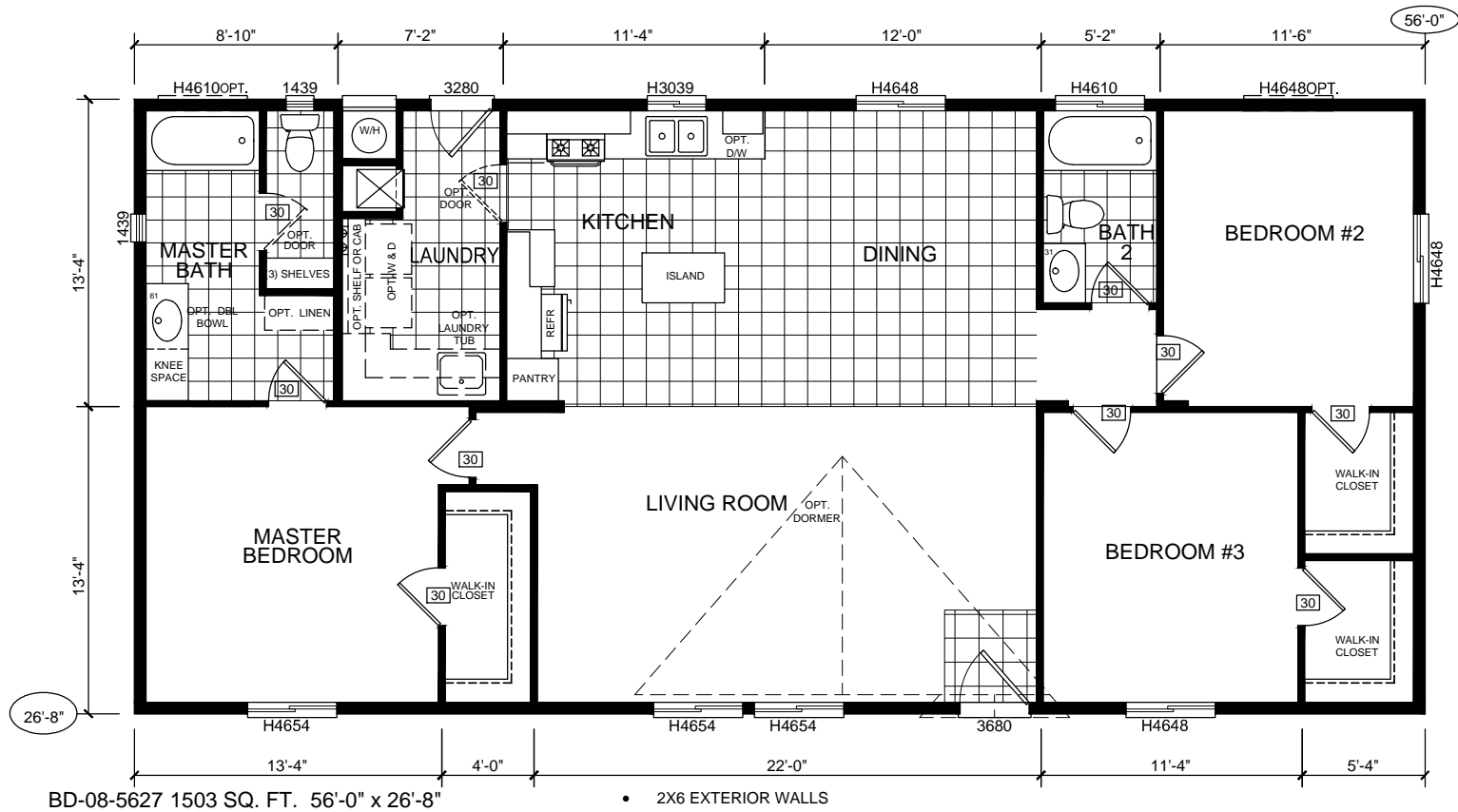
MODIFICATIONS
 2-SEE REV LOG FOR CHANGES BMS 3-2-11

MODEL: **BD-08-5627**
 56/27-3BR
 TITLE: **LITERATURE PLAN**
 BLACK LINE ONLY

DATE: 2-24-11 SCALE: 1/8" = 1'-0" FILENAME:
 DRAWN BY: BMS CHECKED BY: BD-08-5627-LT101

SHEET NO.:
LT-102

PAGE:
 1 OF 1



299 N. Smith Ave., Corona CA 92880

PROPRIETARY AND CONFIDENTIAL
 THESE DRAWINGS AND SPECIFICATIONS ARE ORIGINAL,
 PROPRIETARY AND CONFIDENTIAL MATERIALS OF
 CHAMPION HOME BUILDERS INC.
 COPYRIGHT © 1976-2015 BY CHAMPION

APPROVER'S SEAL

MODIFICATIONS

6-GAS W/H BMS 6-15-12

MODEL:

BD-08-5627

56/27-3BR

TITLE:

LITERATURE PLAN
 2X6 EXTERIOR WALLS

DATE: 2-16-12

SCALE: 1/8" = 1'-0"

FILENAME:

BD-08-5627-LT101

DRAWN BY: BMS

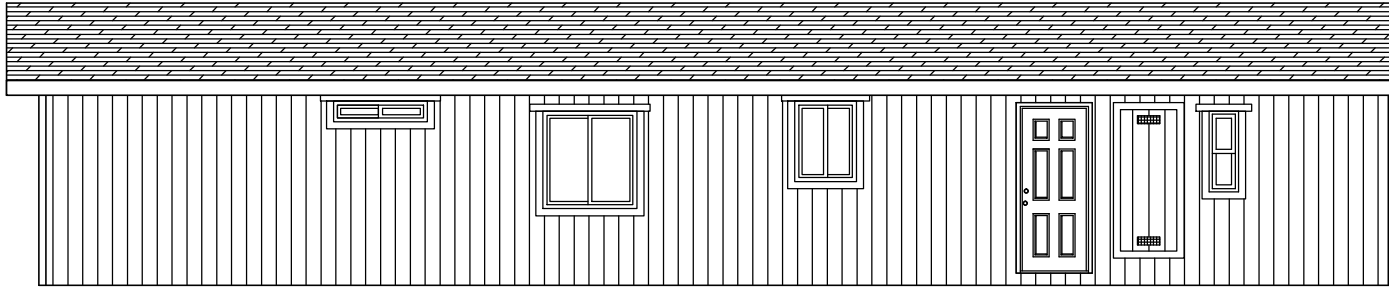
CHECKED BY:

SHEET NO.:

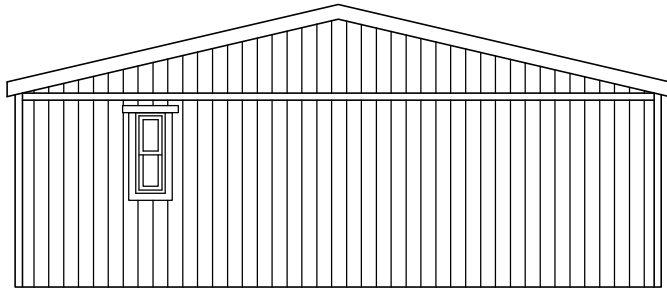
LT-103

PAGE:

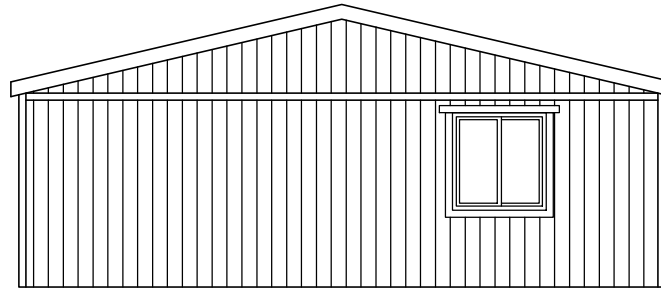
1 OF 1



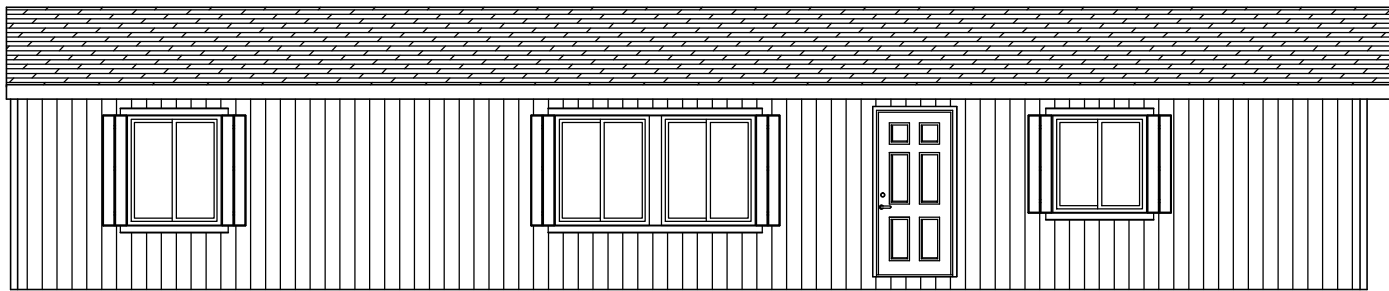
RIGHT



REAR



FRONT



LEFT



299 N. Smith Ave., Corona CA 92880

PROPRIETARY AND CONFIDENTIAL
 THESE DRAWINGS AND SPECIFICATIONS ARE ORIGINAL,
 PROPRIETARY AND CONFIDENTIAL MATERIALS OF
 CHAMPION HOME BUILDERS INC.
 COPYRIGHT © 1976-2015 BY CHAMPION

APPROVER'S SEAL

MODIFICATIONS

6-GAS W/H
 8-SEE REV LOG

BMS 6-15-12
 BMS 6-24-14

MODEL:

BD-08-5627
 56/27-3BR

TITLE:

ELEVATIONS

DATE: 4-19-11

SCALE: 1/8" = 1'-0"

FILENAME:

BD-08-5627-LT101

DRAWN BY: BMS

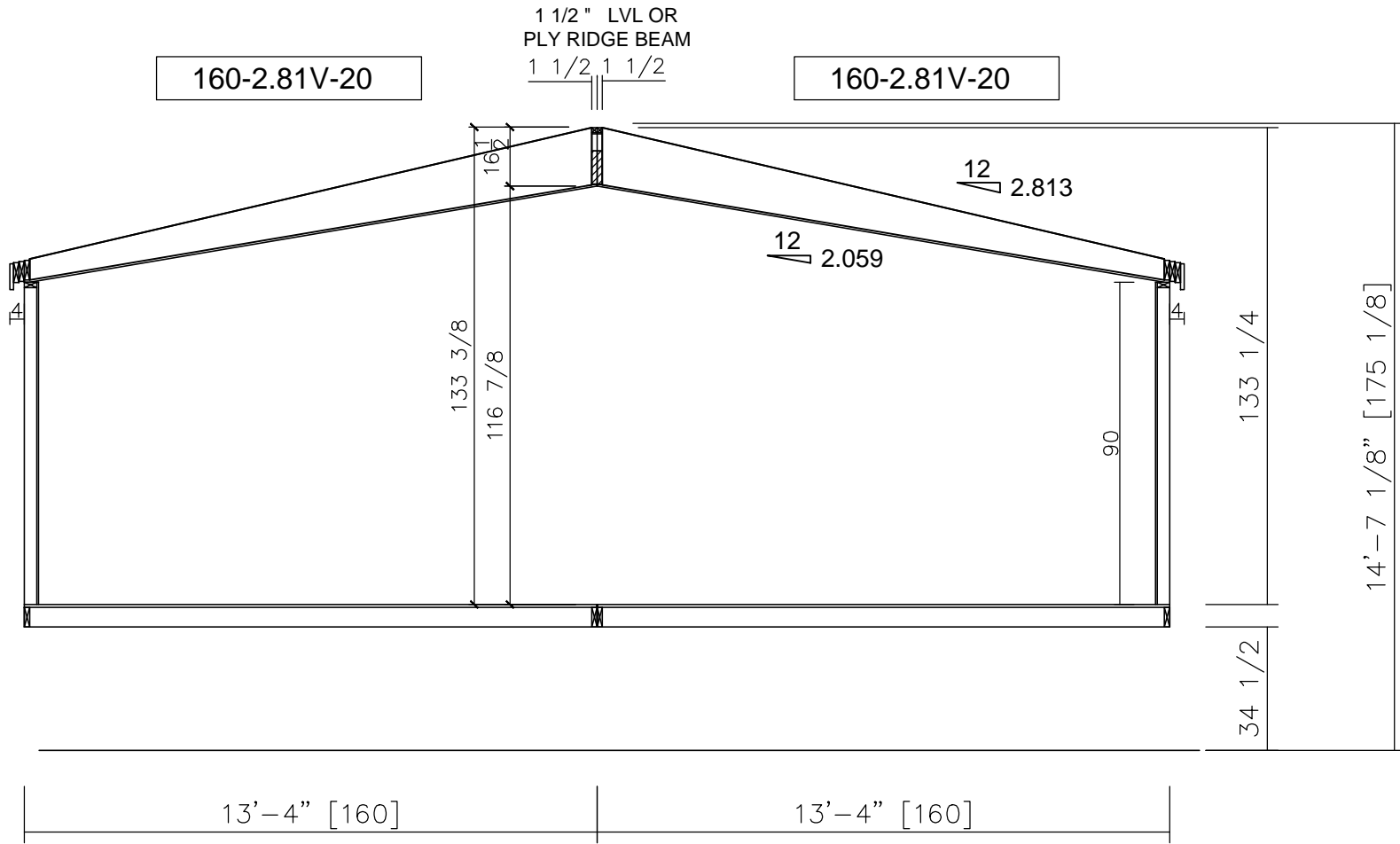
CHECKED BY:

SHEET NO.:

AE-101

PAGE:

1 OF 1



160-2.81V-20

160-2.81V-20

Silvercrest CHAMPION
 MANUFACTURED BEAUTIFULLY™
 299 N. Smith Ave., Corona CA 92880

PROPRIETARY AND CONFIDENTIAL
 THESE DRAWINGS AND SPECIFICATIONS ARE ORIGINAL,
 PROPRIETARY AND CONFIDENTIAL MATERIALS OF
 CHAMPION HOME BUILDERS INC.
 COPYRIGHT © 1976-2015 BY CHAMPION

APPROVER'S SEAL

MODIFICATIONS
 9-SEE REV LOG DJM 9-26-14

MODEL: **BD-08-5627**
 56/27-3BR
 TITLE: **CROSS SECTION**

DATE: 2-24-11 SCALE: N.T.S. FILENAME:
 DRAWN BY: BMS CHECKED BY: BD-08-5627-LT101

SHEET NO.: **AS-101**

PAGE: **1 OF 1**