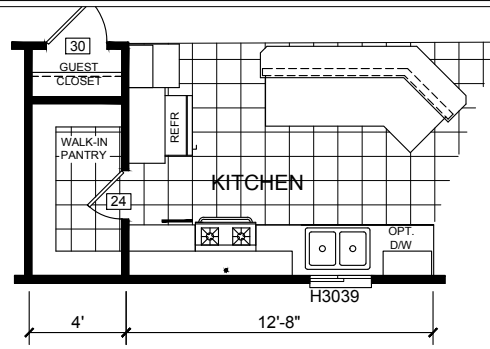
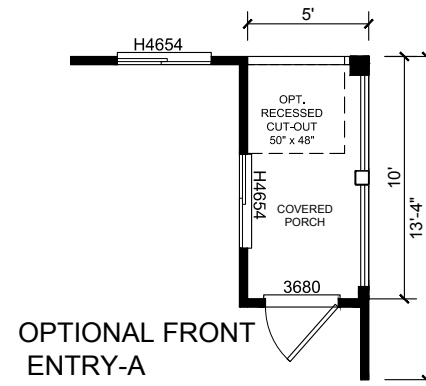


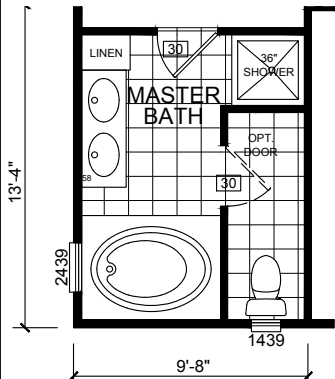
OPTIONAL KITCHEN-A



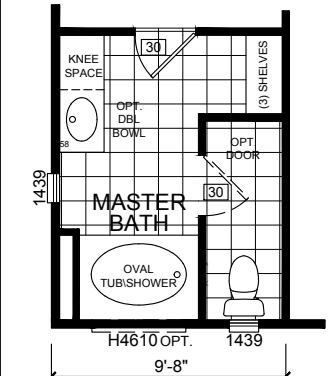
OPTIONAL KITCHEN-B



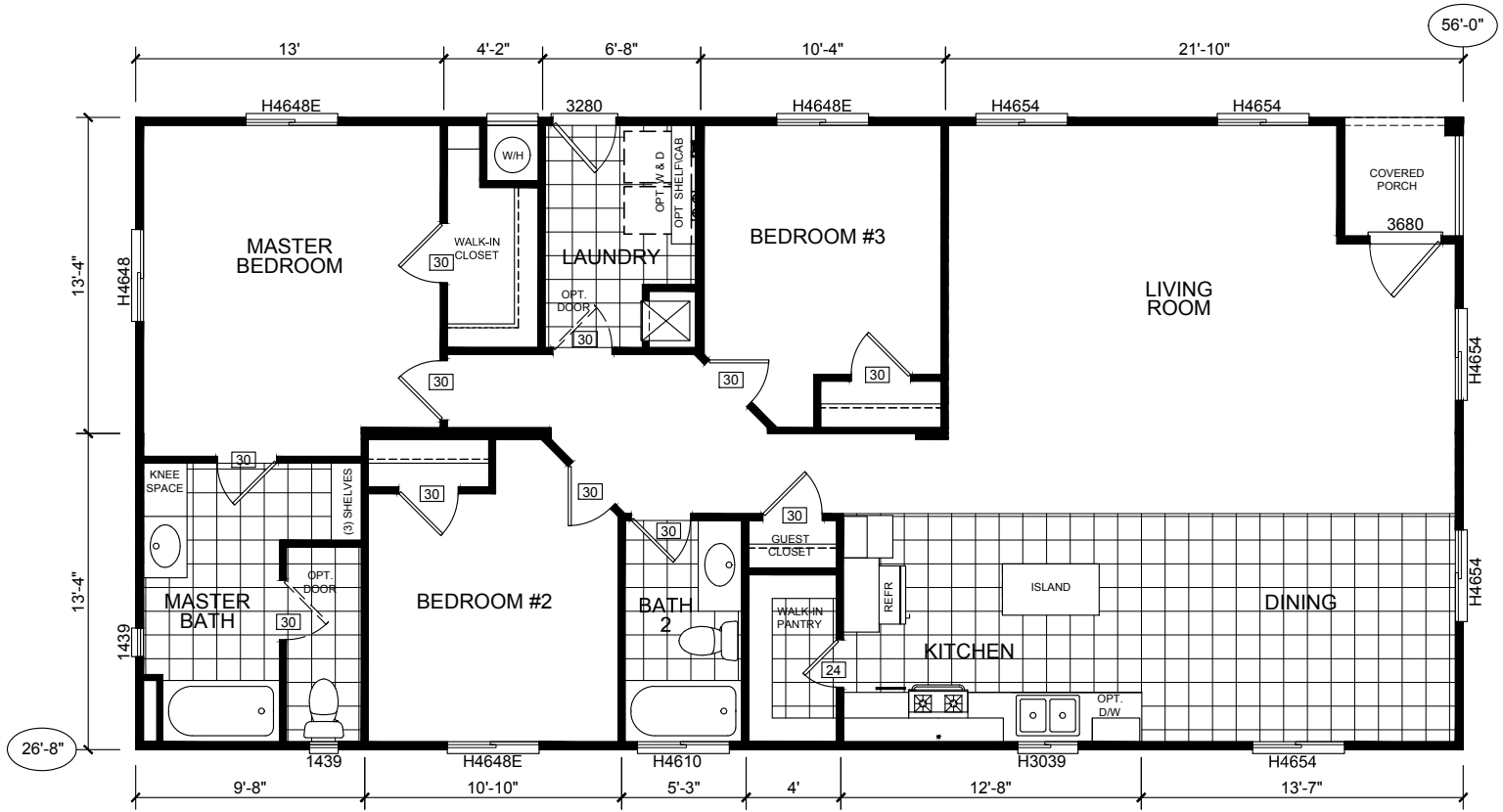
OPTIONAL FRONT ENTRY-A



OPTIONAL MASTER BATH - B



OPTIONAL MASTER BATH - A



BD-17-5627 1493 SQ. FT. 56'-0" x 26'-8"

Silvercrest CHAMPION
 MANUFACTURED BEAUTIFULLY™
 299 N. Smith Ave., Corona CA 92880

PROPRIETARY AND CONFIDENTIAL
 THESE DRAWINGS AND SPECIFICATIONS ARE ORIGINAL,
 PROPRIETARY AND CONFIDENTIAL MATERIALS OF
 CHAMPION HOME BUILDERS INC.
 COPYRIGHT © 1976-2017 BY CHAMPION

APPROVER'S SEAL

MODIFICATIONS
 2-SEE REV LOG
 3-SEE REV LOG
 AMG 06-18-15
 SR 3-8-17

MODEL: **BD17-5627**
 56/26-8-3BR

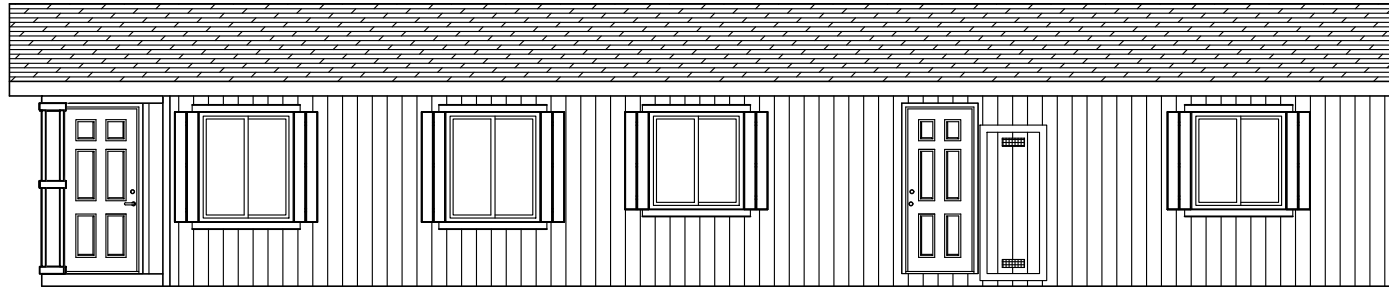
TITLE: **LITERATURE PLAN**

DATE: 12-16-14 SCALE: 1/8" = 1'-0"
 DRAWN BY: dmontag CHECKED BY:

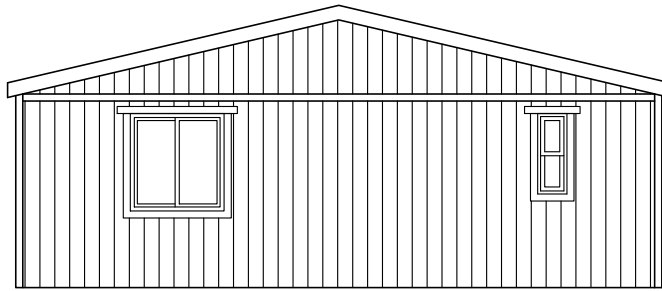
FILENAME: BD-17-5627 LT101

SHEET NO.: **LT-101**

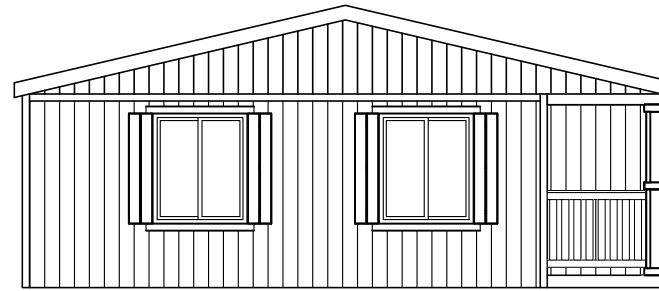
PAGE: **1 OF 1**



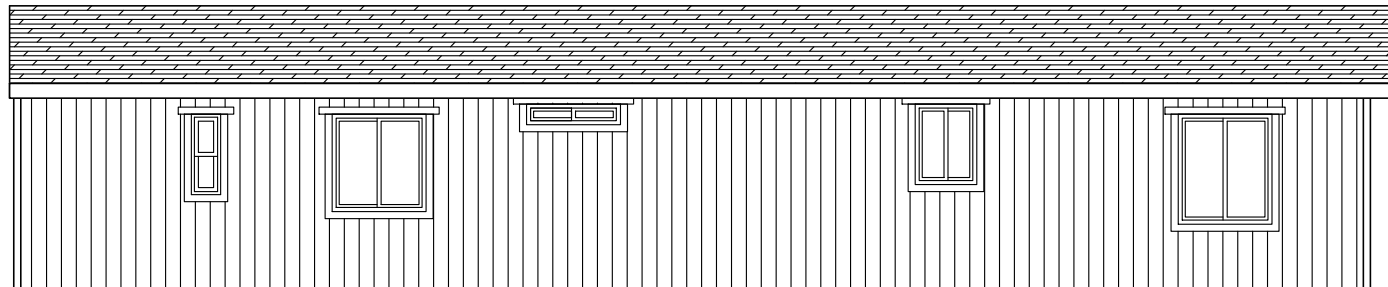
RIGHT



REAR



FRONT



LEFT

Silvercrest CHAMPION
 MANUFACTURED BEAUTIFULLY™
 299 N. Smith Ave., Corona CA 92880

PROPRIETARY AND CONFIDENTIAL
 THESE DRAWINGS AND SPECIFICATIONS ARE ORIGINAL.
 PROPRIETARY AND CONFIDENTIAL MATERIALS OF
 CHAMPION HOME BUILDERS INC.
 COPYRIGHT © 1976-2017 BY CHAMPION

APPROVER'S SEAL

MODIFICATIONS

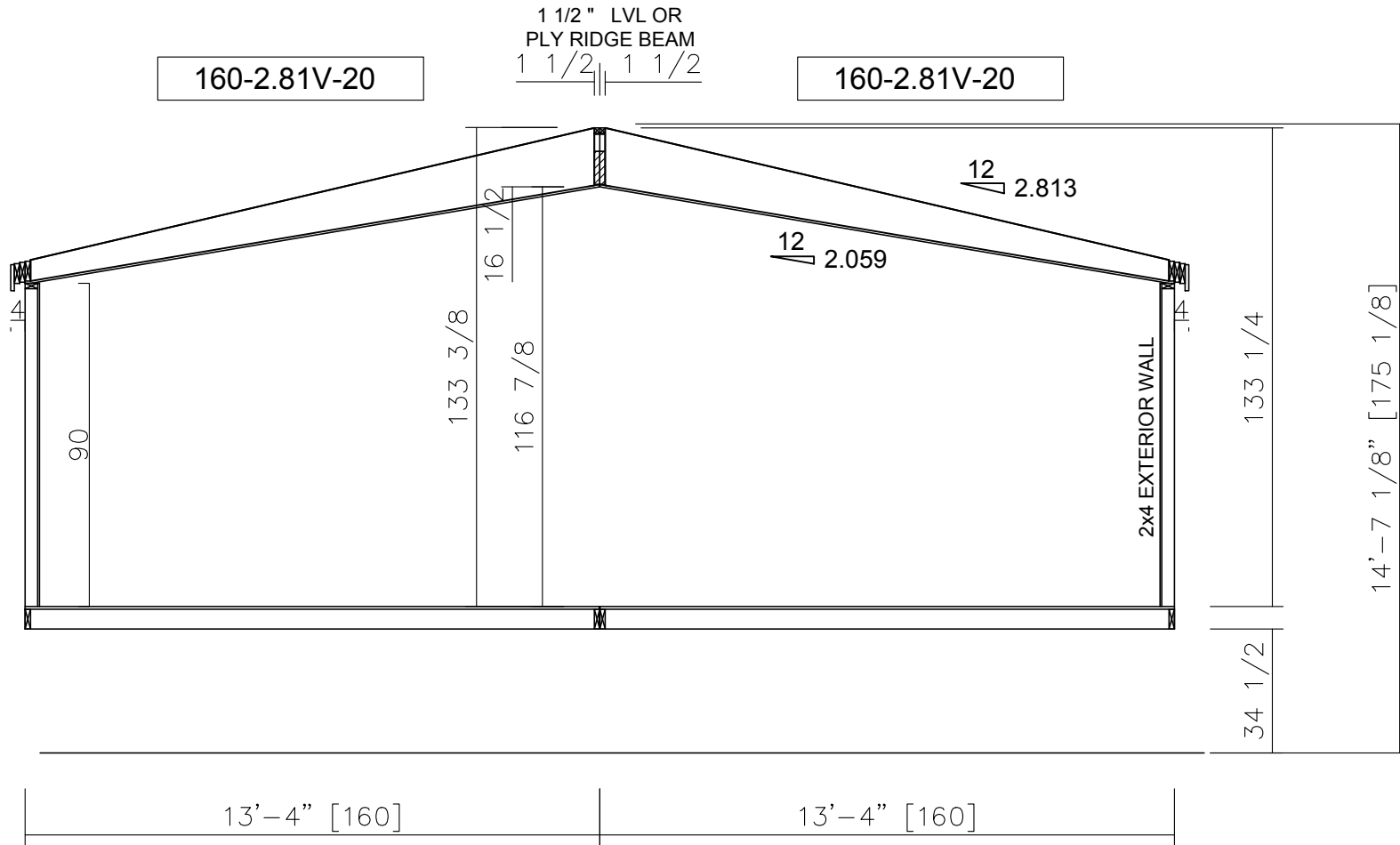
MODEL: **BD17-5627**
 56/26-8-3BR

TITLE: **ELEVATIONS**

DATE: 12-16-14 SCALE: 1/8" = 1'-0" FILENAME:
 DRAWN BY: dmontag CHECKED BY: BD-17-5627 LT101

SHEET NO.:
AE-101

PAGE:
 1 OF 1



160-2.81V-20

160-2.81V-20

1 1/2" LVL OR
PLY RIDGE BEAM
1 1/2" 1 1/2"

12 2.813

12 2.059

90

133 3/8

16 1/2

116 7/8

2x4 EXTERIOR WALL

133 1/4

34 1/2

14'-7 1/8" [175 1/8]

13'-4" [160]

13'-4" [160]

Silvercrest CHAMPION
MANUFACTURED BEAUTIFULLY™
299 N. Smith Ave., Corona CA 92880

APPROVER'S SEAL

MODIFICATIONS

MODEL: **BD17-5627**
56/26-8-3BR
TITLE: **CROSS SECTION**
DATE: 12-16-14 SCALE: 1/4" = 1'-0" FILENAME:
DRAWN BY: dmontag CHECKED BY: BD-17-5627 LT101

SHEET NO.: **AS-101**
PAGE: **1 OF 1**

PROPRIETARY AND CONFIDENTIAL
THESE DRAWINGS AND SPECIFICATIONS ARE ORIGINAL.
PROPRIETARY AND CONFIDENTIAL MATERIALS OF
CHAMPION HOME BUILDERS INC.
COPYRIGHT © 1976-2017 BY CHAMPION