

Silvercrest CHAMPION
 MANUFACTURED BEAUTIFULLY™
 299 N. Smith Ave., Corona CA 92880

PROPRIETARY AND CONFIDENTIAL
 THESE DRAWINGS AND SPECIFICATIONS ARE ORIGINAL,
 PROPRIETARY AND CONFIDENTIAL MATERIALS OF
 CHAMPION HOME BUILDERS INC.
 COPYRIGHT © 1976-2016 BY CHAMPION

APPROVER'S SEAL

MODIFICATIONS

MODEL: **WC-12**
 60/56/26-8-3BR

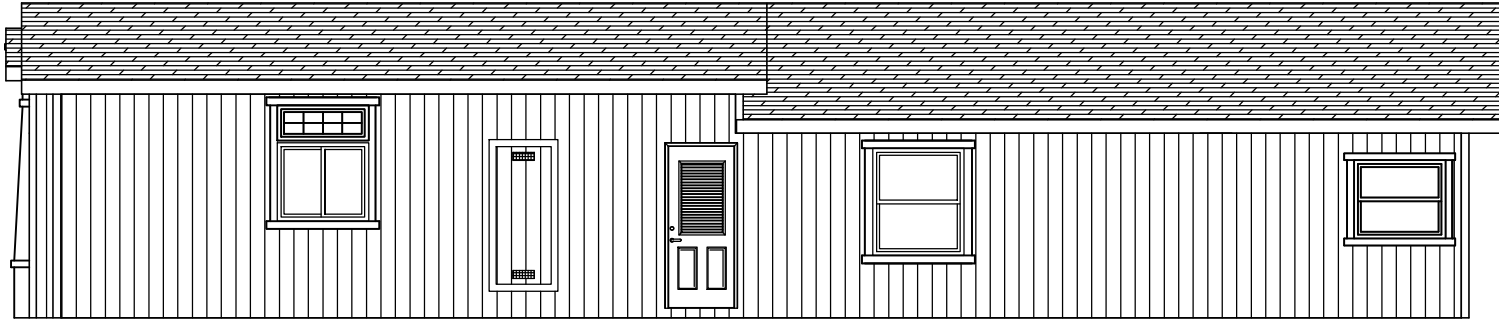
TITLE: **LITERATURE PLAN**

DATE: 11-01-13 SCALE: 1/8" = 1'-0"
 DRAWN BY: BMS CHECKED BY:

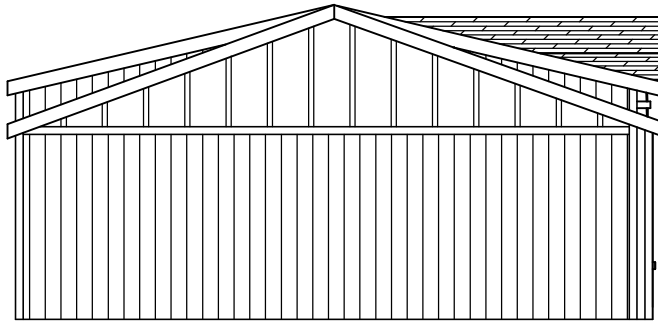
FILENAME: WC-12-LT101

SHEET NO.: **LT-101**

PAGE: **1 OF 1**



RIGHT



REAR



FRONT



LEFT



299 N. Smith Ave., Corona CA 92880

PROPRIETARY AND CONFIDENTIAL
 THESE DRAWINGS AND SPECIFICATIONS ARE ORIGINAL,
 PROPRIETARY AND CONFIDENTIAL MATERIALS OF
 CHAMPION HOME BUILDERS INC.
 COPYRIGHT © 1976-2016 BY CHAMPION

APPROVER'S SEAL

MODIFICATIONS

MODEL:

WC-12
 60/56/26-8-3BR

SHEET NO.:

AE-101

TITLE:

ELEVATIONS

DATE: 11-01-13

SCALE: 3/32" = 1'-0"

FILENAME:

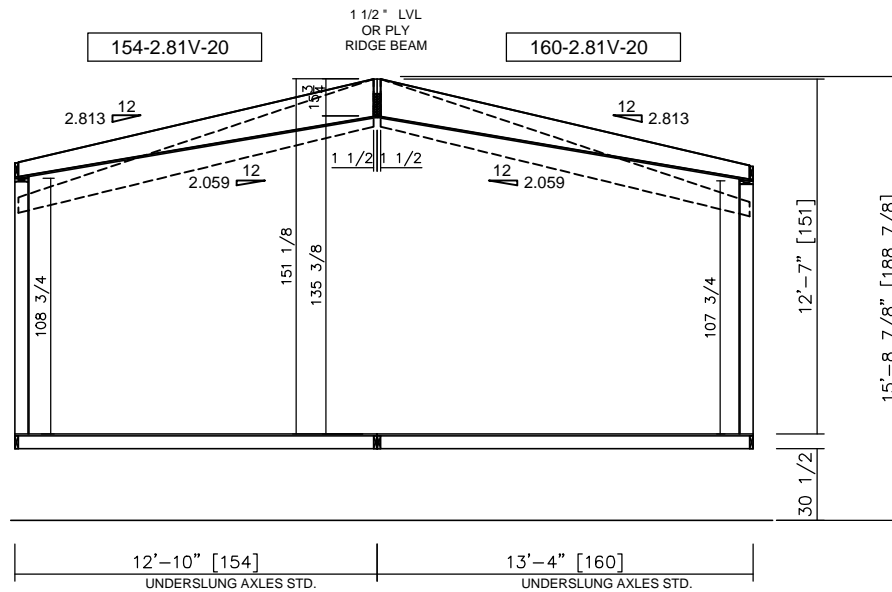
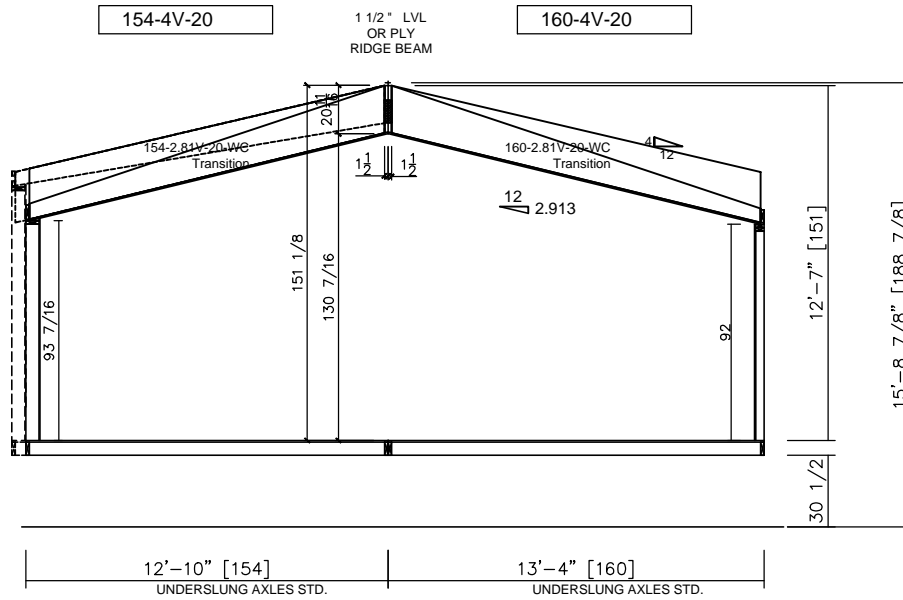
PAGE:

DRAWN BY:

CHECKED BY:

WC-12-LT101

1 OF 1



Silvercrest CHAMPION
 MANUFACTURED BEAUTIFULLY™
 299 N. Smith Ave., Corona CA 92880

PROPRIETARY AND CONFIDENTIAL
 THESE DRAWINGS AND SPECIFICATIONS ARE ORIGINAL,
 PROPRIETARY AND CONFIDENTIAL MATERIALS OF
 CHAMPION HOME BUILDERS INC.
 COPYRIGHT © 1976-2016 BY CHAMPION

APPROVER'S SEAL

MODIFICATIONS

MODEL: **WC-12**
 60/56/26-8-3BR

TITLE: **CROSS SECTION**

DATE: 11-01-13 SCALE: 3/16" = 1'-0" FILENAME: WC-12-LT101

DRAWN BY: BMS CHECKED BY:

SHEET NO.: **AS-101**

PAGE: **1 OF 1**