

**Silvercrest** CHAMPION  
 MANUFACTURED BEAUTIFULLY™  
 299 N. Smith Ave., Corona CA 92880

PROPRIETARY AND CONFIDENTIAL  
 THESE DRAWINGS AND SPECIFICATIONS ARE ORIGINAL,  
 PROPRIETARY AND CONFIDENTIAL MATERIALS OF  
 CHAMPION HOME BUILDERS INC.  
 COPYRIGHT © 1976-2016 BY CHAMPION

APPROVER'S SEAL

MODIFICATIONS  
 2-SEE REV LOG BMS 11-18-13

MODEL: **WC-27**  
 66-8/38/40-3BR

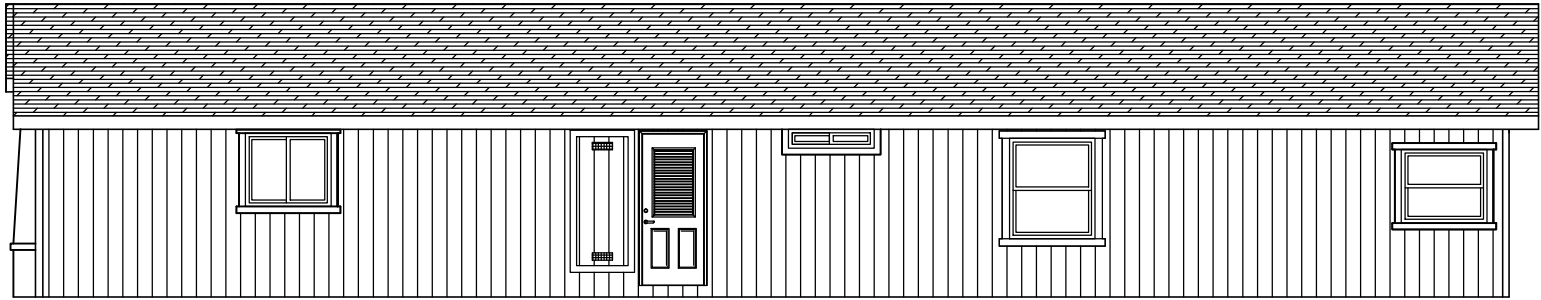
TITLE: **LITERATURE PLAN**

DATE: 12-21-11 SCALE: 1/8" = 1'-0" FILENAME: WC-27-LT101

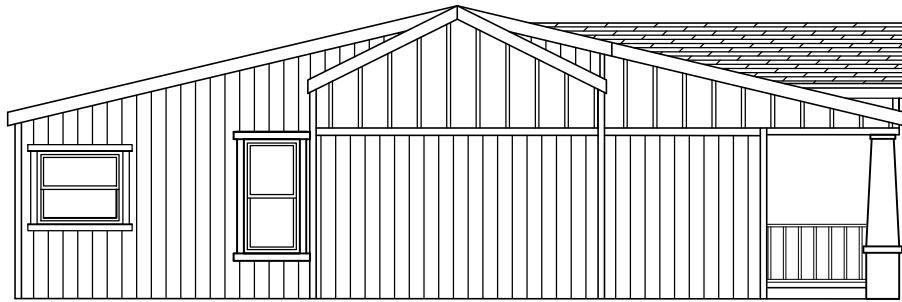
DRAWN BY: BMS CHECKED BY:

SHEET NO.: **LT-101**

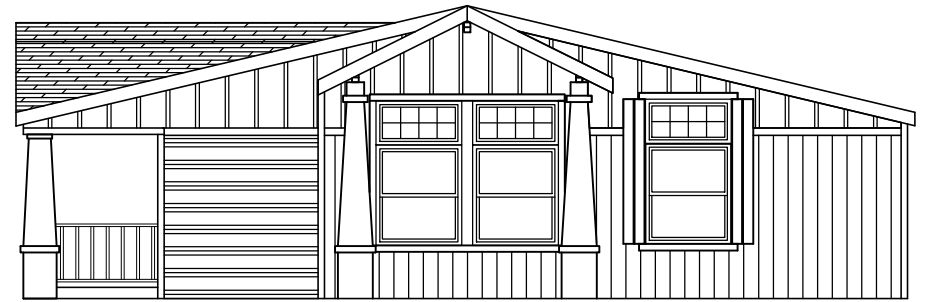
PAGE: **1 OF 1**



RIGHT



REAR



FRONT



LEFT

**Silvercrest** CHAMPION  
MANUFACTURED BEAUTIFULLY™

299 N. Smith Ave., Corona CA 92880

PROPRIETARY AND CONFIDENTIAL  
 THESE DRAWINGS AND SPECIFICATIONS ARE ORIGINAL.  
 PROPRIETARY AND CONFIDENTIAL MATERIALS OF  
 CHAMPION HOME BUILDERS INC.  
 COPYRIGHT © 1976-2016 BY CHAMPION

APPROVER'S SEAL

MODIFICATIONS

MODEL:

**WC-27**

69-4/38/40-6-3BR

TITLE:

**ELEVATIONS**

SHEET NO.:

**AE-101**

DATE: 12-21-11

SCALE: 1/8" = 1'-0"

FILENAME:

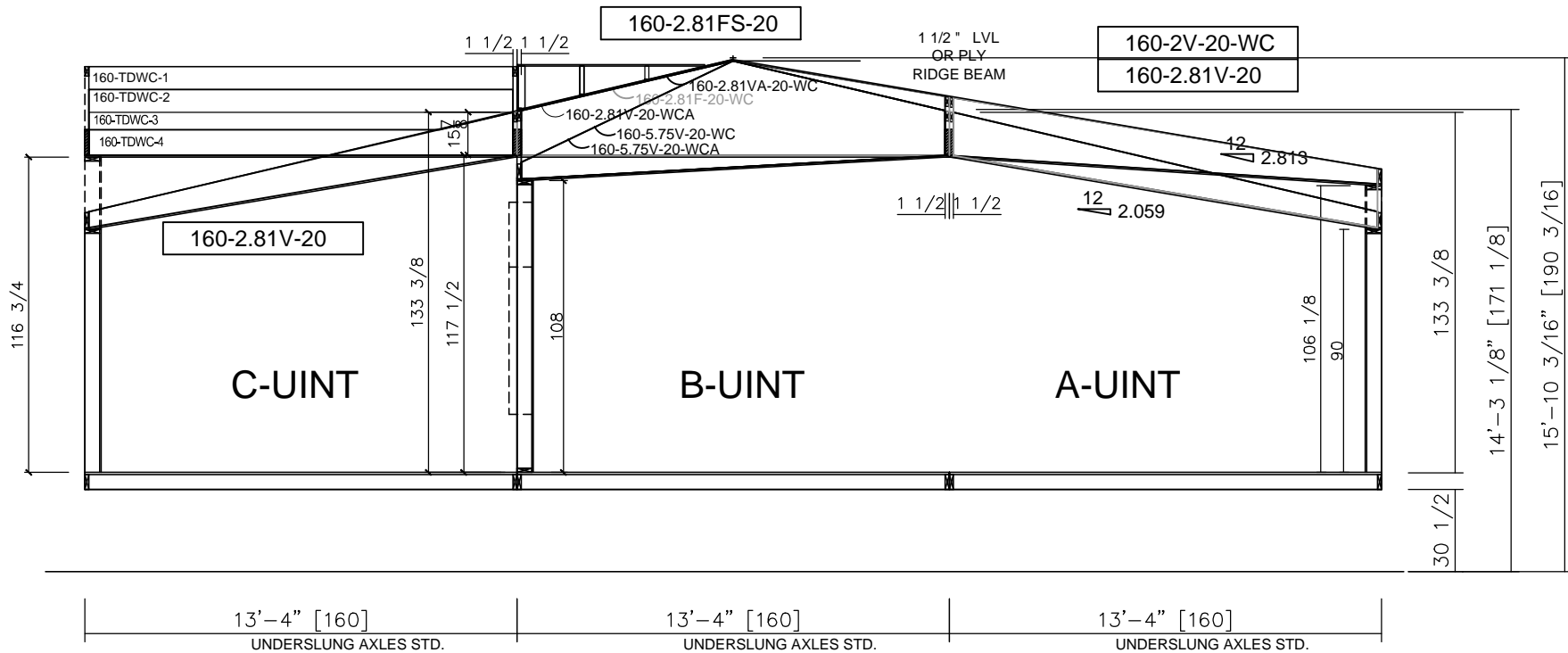
PAGE:

DRAWN BY: BMS

CHECKED BY:

WC-27-LT101

1 OF 1



299 N. Smith Ave., Corona CA 92880

PROPRIETARY AND CONFIDENTIAL  
THESE DRAWINGS AND SPECIFICATIONS ARE ORIGINAL,  
PROPRIETARY AND CONFIDENTIAL MATERIALS OF  
CHAMPION HOME BUILDERS INC.  
COPYRIGHT © 1976-2016 BY CHAMPION

APPROVER'S SEAL

MODIFICATIONS

MODEL:

**WC-27**

69-4/38/40-6-3BR

SHEET NO.:

TITLE:

**CROSS SECTION**

**AS-101**

DATE: 12-21-11

SCALE: 3/16" = 1'-0"

FILENAME:

PAGE:

DRAWN BY: BMS

CHECKED BY:

WC-27-LT101

1 OF 1