

WC-28 (1703 SQ. FT.) 61'-0" x 30'-0" NO PORCH  
 (1830 SQ. FT.) 61'-0" x 30'-0" WITH PORCH

**Silvercrest** CHAMPION  
 MANUFACTURED BEAUTIFULLY™  
 299 N. Smith Ave., Corona CA 92880

PROPRIETARY AND CONFIDENTIAL  
 THESE DRAWINGS AND SPECIFICATIONS ARE ORIGINAL,  
 PROPRIETARY AND CONFIDENTIAL MATERIALS OF  
 CHAMPION HOME BUILDERS INC.  
 COPYRIGHT © 1976-2016 BY CHAMPION

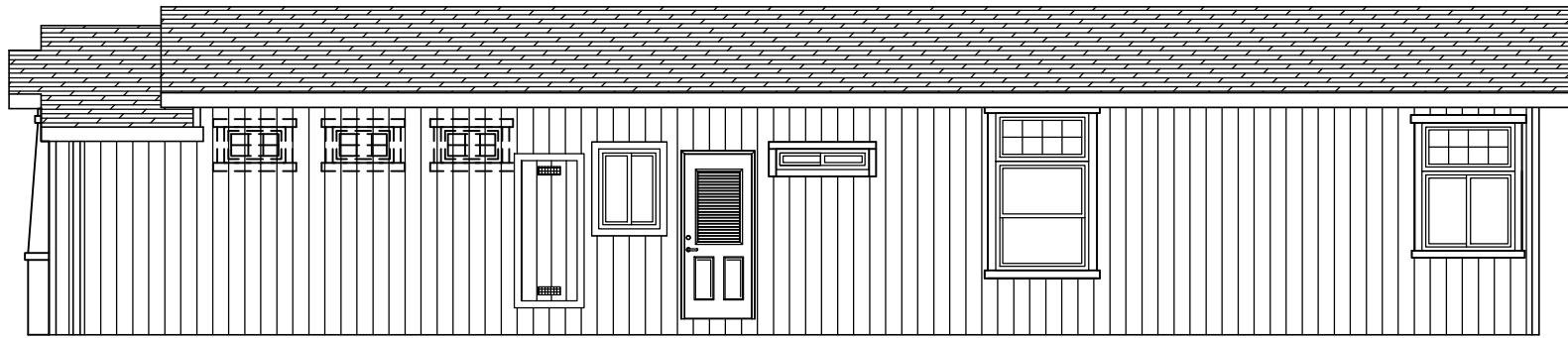
APPROVER'S SEAL

MODIFICATIONS  
 3a-see rev log ts 6-15-15

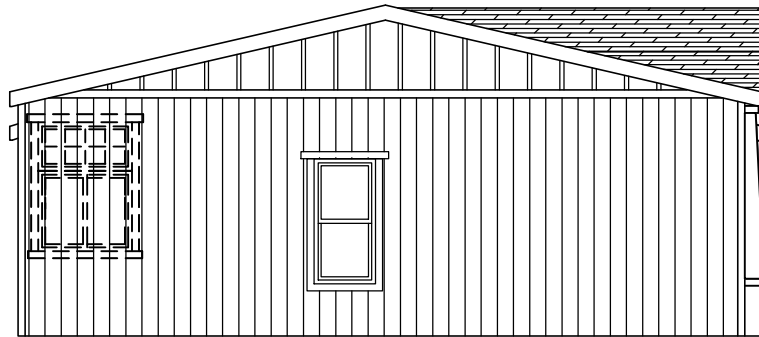
MODEL: **WC-28**  
 61/30-3BR  
 TITLE: **LITERATURE PLAN**

DATE: 10-30-13 SCALE: 1/8" = 1'-0" FILENAME: WC-28-LT101  
 DRAWN BY: BMS CHECKED BY:

SHEET NO.: **LT-101**  
 PAGE: **1 OF 1**



RIGHT



REAR



FRONT



LEFT



299 N. Smith Ave., Corona CA 92880

PROPRIETARY AND CONFIDENTIAL  
 THESE DRAWINGS AND SPECIFICATIONS ARE ORIGINAL.  
 PROPRIETARY AND CONFIDENTIAL MATERIALS OF  
 CHAMPION HOME BUILDERS INC.  
 COPYRIGHT © 1976-2016 BY CHAMPION

APPROVER'S SEAL

MODIFICATIONS

MODEL:

**WC-28**  
 61/30-3BR

SHEET NO.:

**LT-101**

TITLE:

**LITERATURE PLAN**

DATE: 10-30-13

SCALE: 1/8" = 1'-0"

FILENAME:

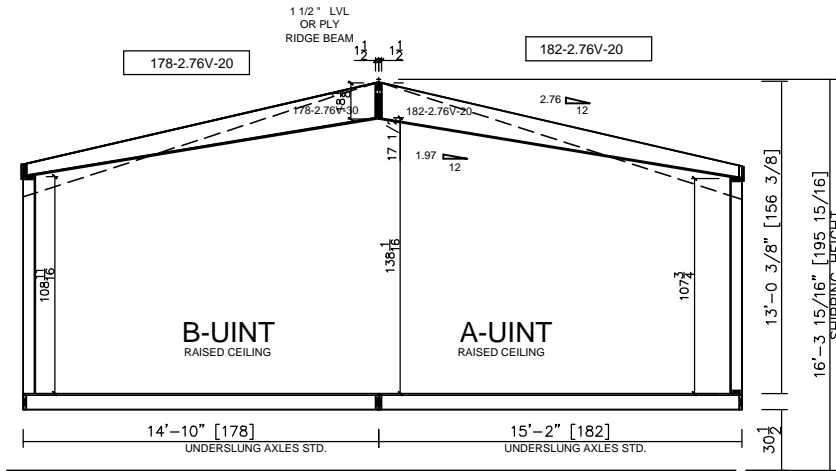
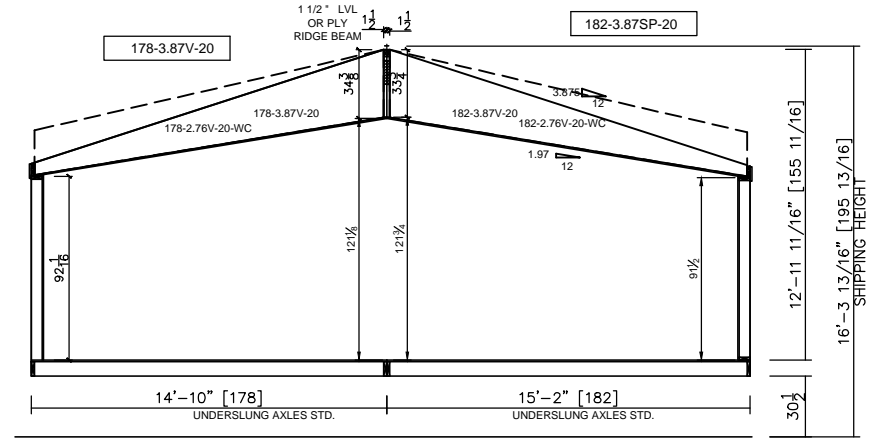
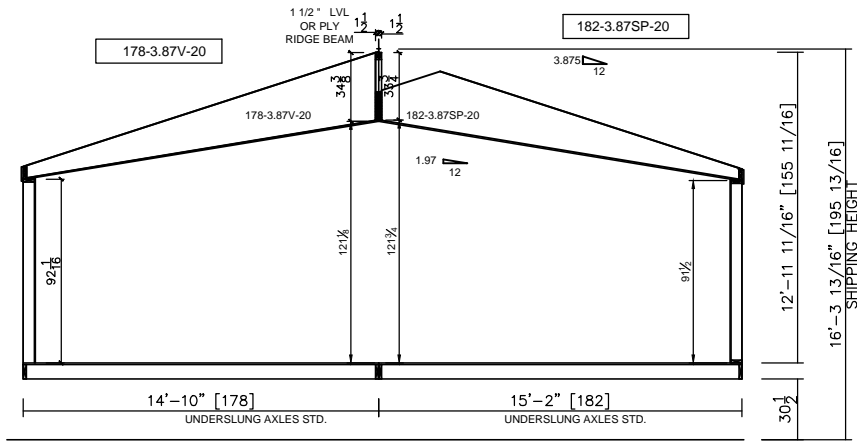
PAGE:

DRAWN BY: BMS

CHECKED BY:

WC-28-LT101

1 OF 1



**Silvercrest** CHAMPION  
 MANUFACTURED BEAUTIFULLY™  
 299 N. Smith Ave., Corona CA 92880

PROPRIETARY AND CONFIDENTIAL  
 THESE DRAWINGS AND SPECIFICATIONS ARE ORIGINAL,  
 PROPRIETARY AND CONFIDENTIAL MATERIALS OF  
 CHAMPION HOME BUILDERS INC.  
 COPYRIGHT © 1976-2016 BY CHAMPION

APPROVER'S SEAL

MODIFICATIONS

MODEL: WC-28 61/30-4-3BR		
TITLE: CROSS SECTION		
DATE: 10-30-13	SCALE: N.T.S.	FILENAME:
DRAWN BY: BMS	CHECKED BY:	WC-28-LT101

SHEET NO.:	AS-101
PAGE:	1 OF 2