

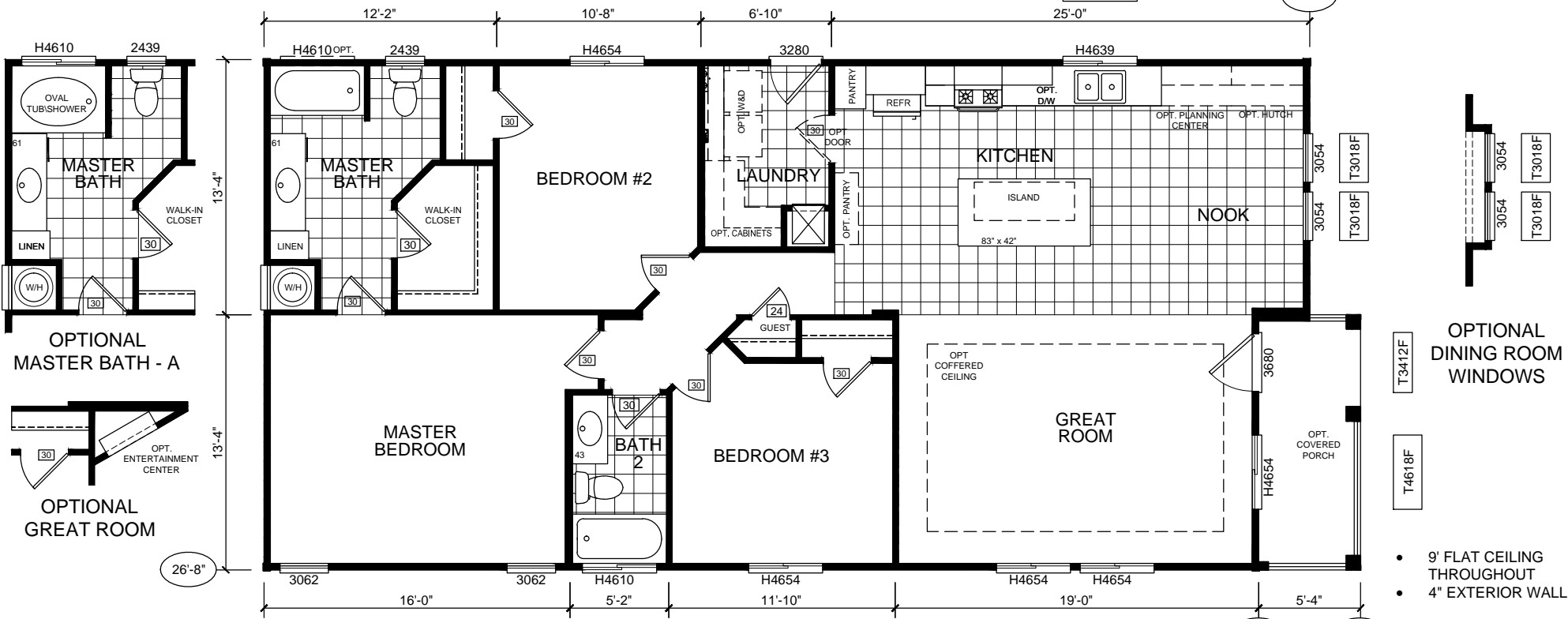
OPTIONAL MASTER BATH-B

OPTIONAL LAUNDRY ROOM-A

OPTIONAL LAUNDRY ROOM-B

OPTIONAL LAUNDRY ROOM-C

OPTIONAL KITCHEN



KB-55 1422 SQ. FT. (54'-8"/52'-0" x 26'-8") NO PORCH  
 1493 SQ. FT. (54'-8"/57'-4" x 26'-8") WITH PORCH

OPTIONAL DINING ROOM WINDOWS

- 9' FLAT CEILING THROUGHOUT
- 4" EXTERIOR WALL

\*WINDOW SIZES SUBJECT TO CHANGE-8/3/15

**Silvercrest** CHAMPION  
 MANUFACTURED BEAUTIFULLY™  
 299 N. Smith Ave., Corona CA 92880

PROPRIETARY AND CONFIDENTIAL  
 THESE DRAWINGS AND SPECIFICATIONS ARE ORIGINAL.  
 PROPRIETARY AND CONFIDENTIAL MATERIALS OF  
 CHAMPION HOME BUILDERS INC.  
 COPYRIGHT © 1976-2015 BY CHAMPION

APPROVER'S SEAL

MODIFICATIONS

DESIGN CHANGES	BMS 6-10-10
2-REV. BA#1 T/S WALL	TITO 2/2/11
4-SEE REV LOG FOR CHANGES	BMS 4-20-11
12-SEE REV LOG	BMS 1-31-13
13-SEE REV LOG	AMG 5-14-15

MODEL: **KB-55**  
 54-8/52/26-8-3BR

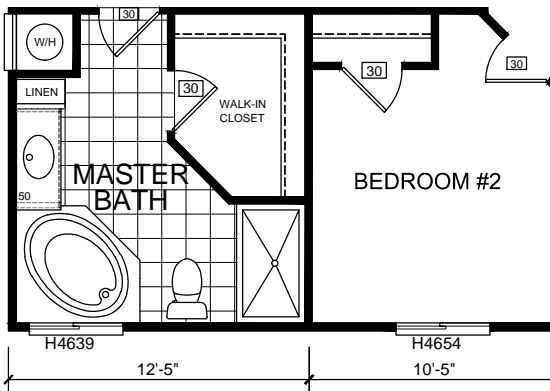
TITLE: **LITERATURE PLAN**

DATE: 7-13-10 SCALE: 1/8" = 1'-0" FILENAME: KB-55-LT101

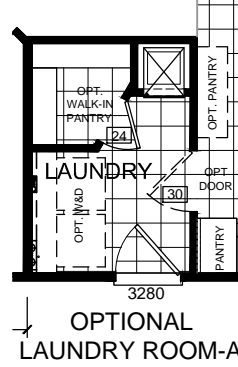
DRAWN BY: BMS CHECKED BY:

SHEET NO.: **LT-101**

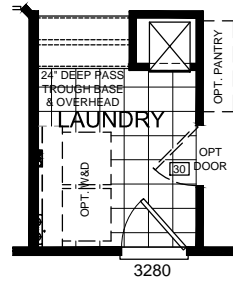
PAGE: **1 OF 1**



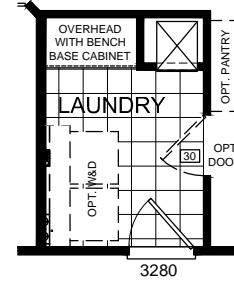
OPTIONAL MASTER BATH-B



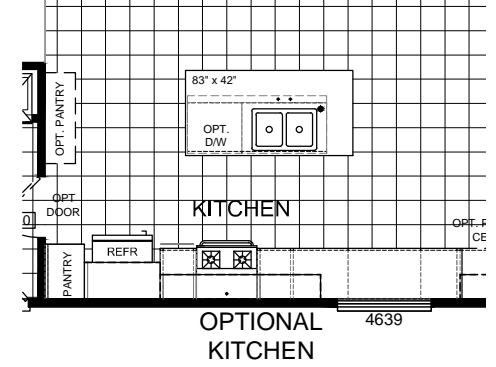
OPTIONAL LAUNDRY ROOM-A



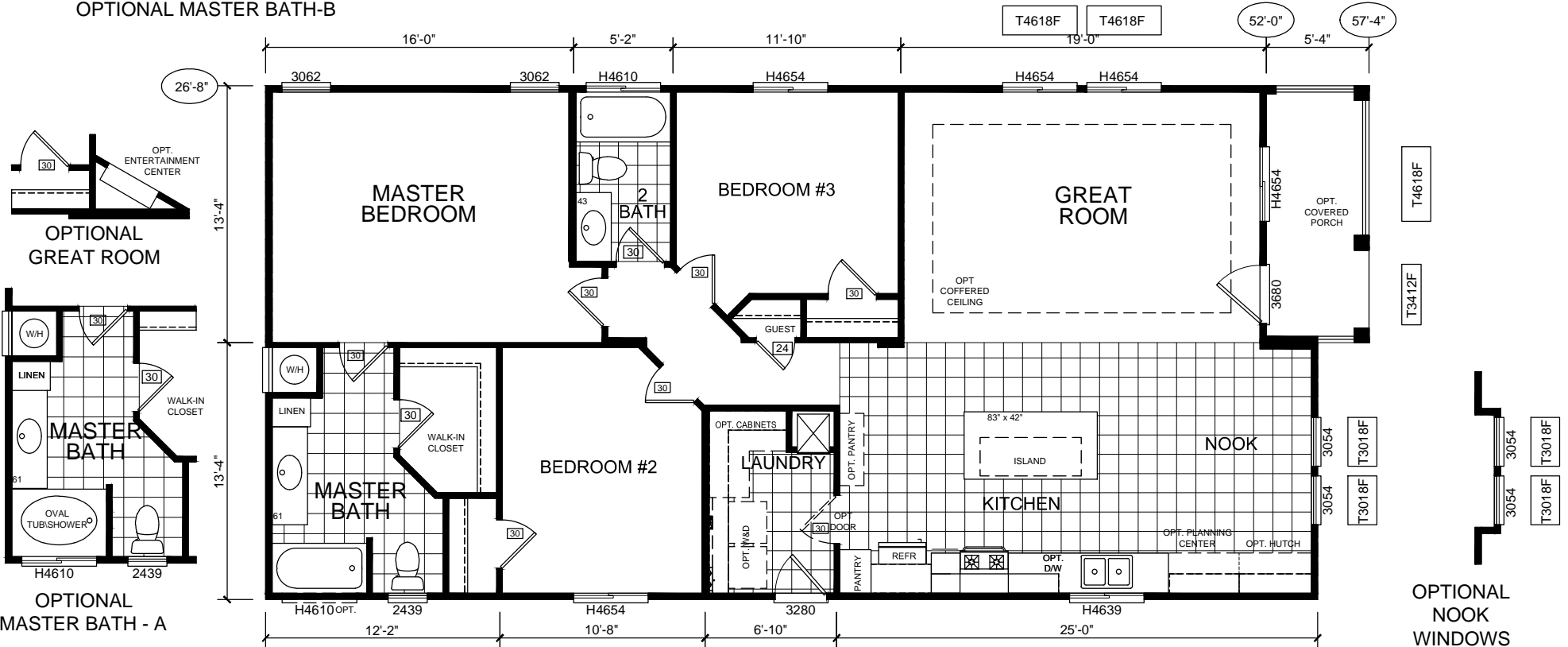
OPTIONAL LAUNDRY ROOM-B



OPTIONAL LAUNDRY ROOM-C



OPTIONAL KITCHEN



KB-55 1422 SQ. FT. (54'-8"/52'-0" x 26'-8") NO PORCH  
 1493 SQ. FT. (54'-8"/57'-4" x 26'-8") WITH PORCH

- 9' FLAT CEILING THROUGHOUT
- 4" EXTERIOR WALL

**Silvercrest** CHAMPION  
 MANUFACTURED BEAUTIFULLY™  
 299 N. Smith Ave., Corona CA 92880

PROPRIETARY AND CONFIDENTIAL  
 THESE DRAWINGS AND SPECIFICATIONS ARE ORIGINAL.  
 PROPRIETARY AND CONFIDENTIAL MATERIALS OF  
 CHAMPION HOME BUILDERS INC.  
 COPYRIGHT © 1976-2015 BY CHAMPION

APPROVER'S SEAL

MODIFICATIONS

12-SEE REV LOG BMS 1-31-13

MODEL: **KB-55**  
 54-8/52/26-8-3BR

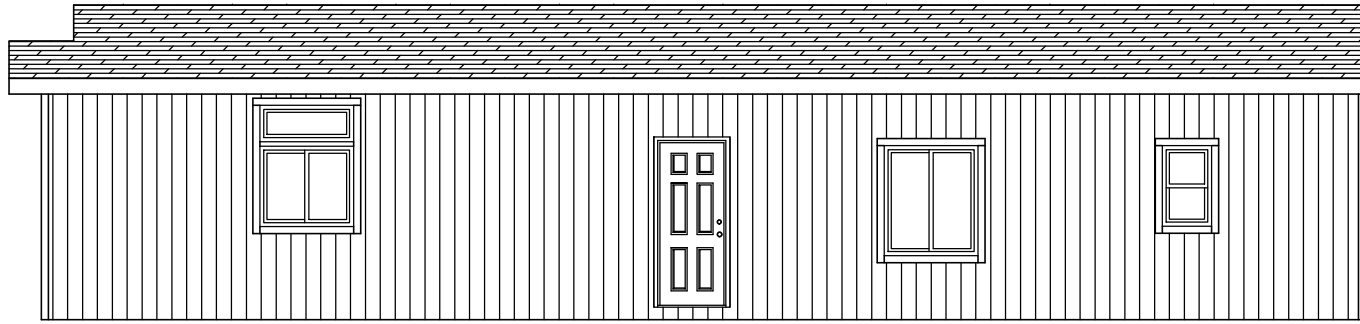
TITLE: **LITERATURE PLAN**  
 REVERSE PLAN

DATE: 6-03-11 SCALE: 1/8" = 1'-0" FILENAME: KB-55-LT101

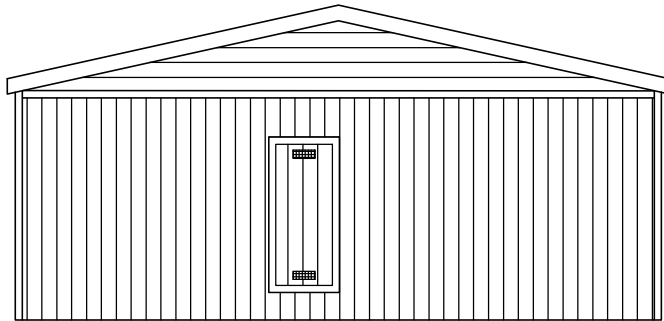
DRAWN BY: BMS CHECKED BY:

SHEET NO.: **LT-102**

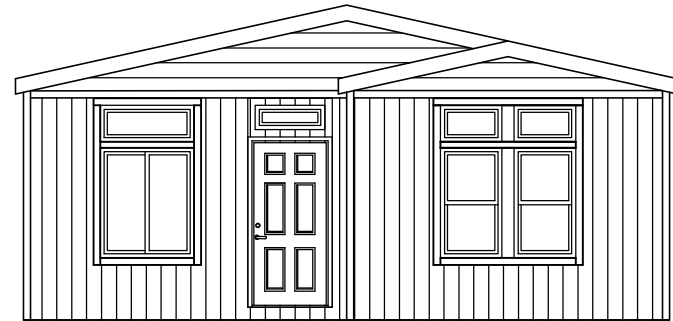
PAGE: **1 OF 1**



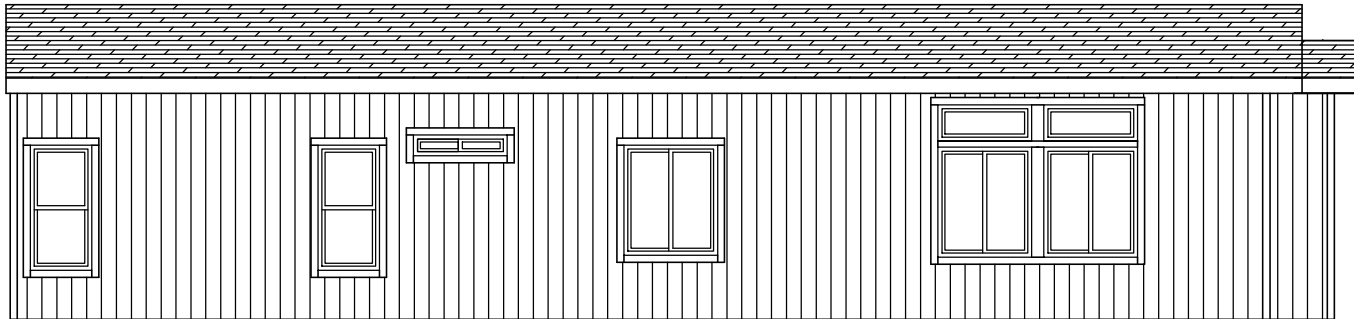
RIGHT



REAR



FRONT



LEFT

**Silvercrest** CHAMPION  
 MANUFACTURED BEAUTIFULLY™  
 299 N. Smith Ave., Corona CA 92880

PROPRIETARY AND CONFIDENTIAL  
 THESE DRAWINGS AND SPECIFICATIONS ARE ORIGINAL,  
 PROPRIETARY AND CONFIDENTIAL MATERIALS OF  
 CHAMPION HOME BUILDERS INC.  
 COPYRIGHT © 1976-2015 BY CHAMPION

APPROVER'S SEAL

MODIFICATIONS  
 REMOVE SIDE GABLE-ADD FRONT GABLE BMS 8/3/10  
 REMOVE SAW TOOTH ROOF BMS 11-3-10

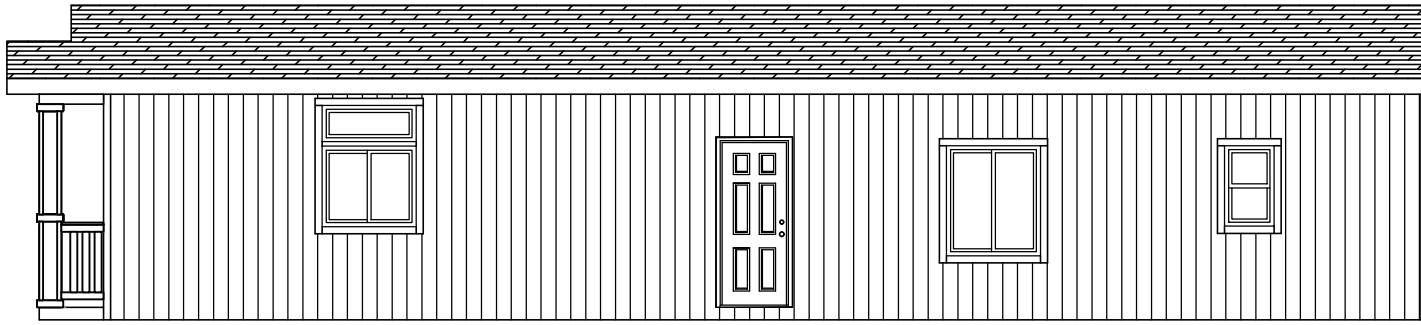
MODEL: **KB-55**  
 54-8/52/26-8-3BR

TITLE: **ELEVATION- STD**  
 STANDARD - NO PORCH

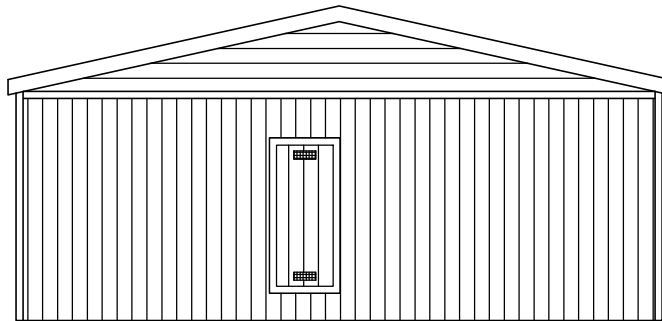
DATE: 11-3-10 SCALE: 1/8" = 1'-0" FILENAME:  
 DRAWN BY: BMS CHECKED BY: KB-55-LT101

SHEET NO.:  
**AE-101**

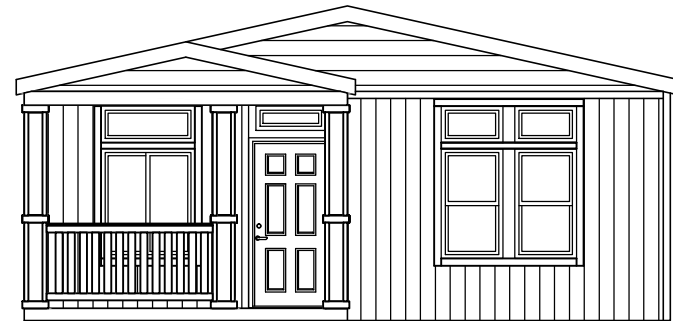
PAGE:  
 1 OF 1



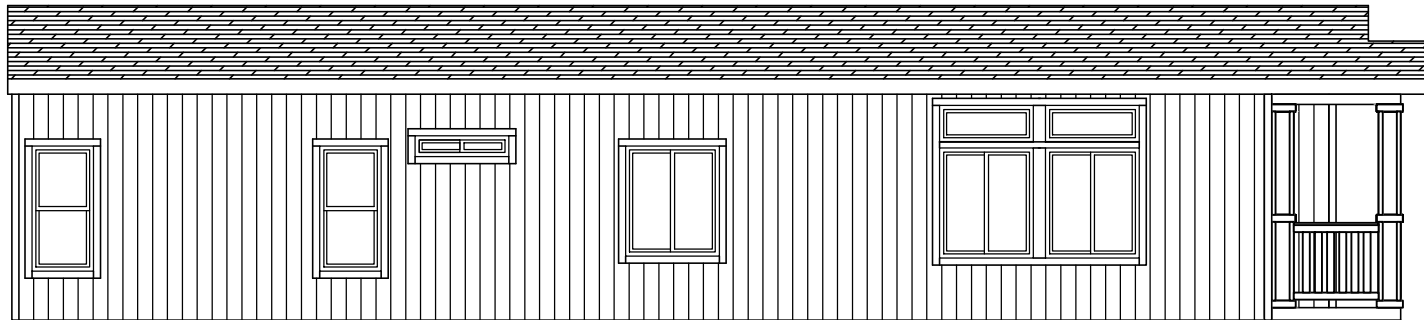
RIGHT



REAR



FRONT



LEFT



299 N. Smith Ave., Corona CA 92880

PROPRIETARY AND CONFIDENTIAL  
 THESE DRAWINGS AND SPECIFICATIONS ARE ORIGINAL,  
 PROPRIETARY AND CONFIDENTIAL MATERIALS OF  
 CHAMPION HOME BUILDERS INC.  
 COPYRIGHT © 1976-2015 BY CHAMPION

APPROVER'S SEAL

MODIFICATIONS

MODEL:

**KB-55**

54-8/52/26-8-3BR

TITLE: **ELEVATION-OPT PORCH**  
 OPTIONAL FRONT PORCH

SHEET NO.:

**AE-102**

DATE: 7-13-10

SCALE: 1/8" = 1'-0"

FILENAME:

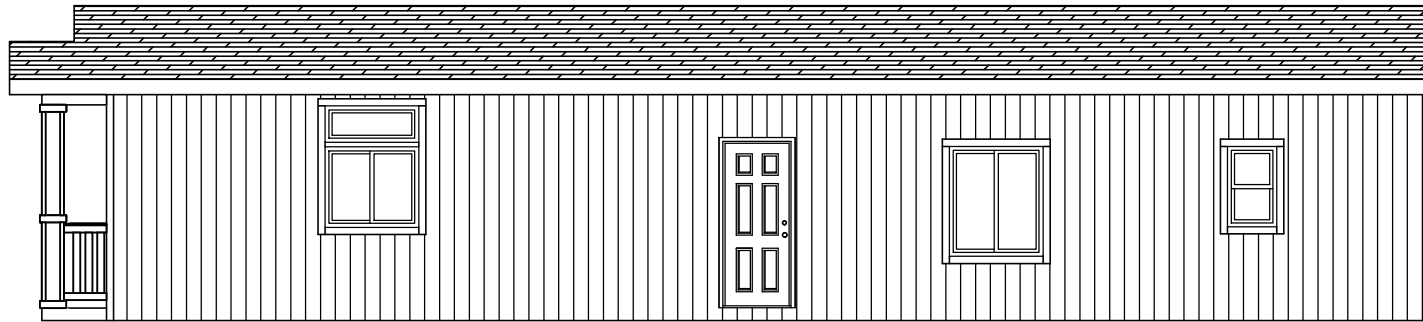
PAGE:

DRAWN BY: BMS

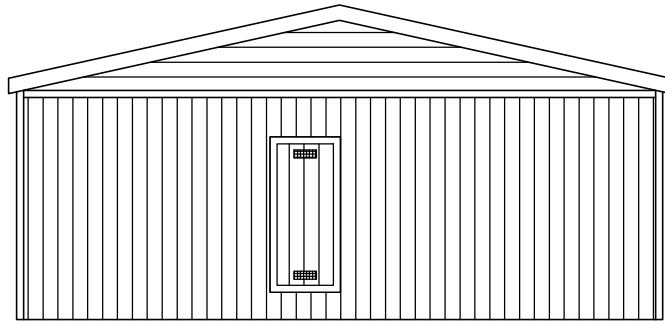
CHECKED BY:

KB-55-LT101

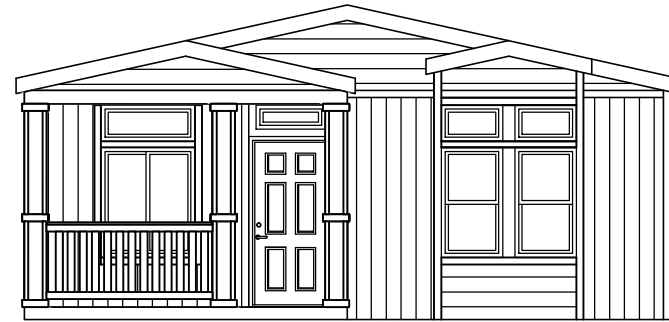
1 OF 1



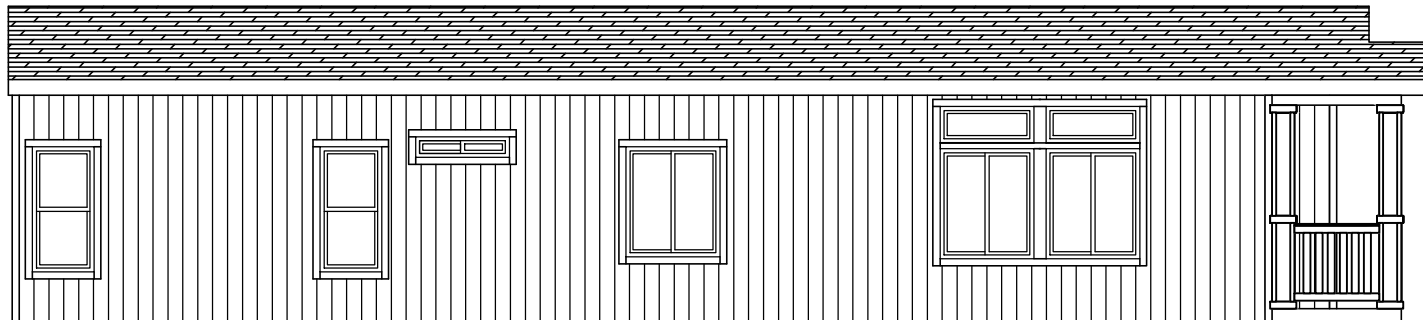
RIGHT



REAR



FRONT



LEFT



299 N. Smith Ave., Corona CA 92880

PROPRIETARY AND CONFIDENTIAL  
 THESE DRAWINGS AND SPECIFICATIONS ARE ORIGINAL.  
 PROPRIETARY AND CONFIDENTIAL MATERIALS OF  
 CHAMPION HOME BUILDERS INC.  
 COPYRIGHT © 1976-2015 BY CHAMPION

APPROVER'S SEAL

MODIFICATIONS

MODEL:

**KB-55**

54-8/52/26-8-3BR

TITLE: **ELEVATION-OPT PORCH**  
 OPTIONAL FRONT PORCH WITH POP-OUT

DATE: 05-08-12

SCALE: 1/8" = 1'-0"

FILENAME:

DRAWN BY: BMS

CHECKED BY:

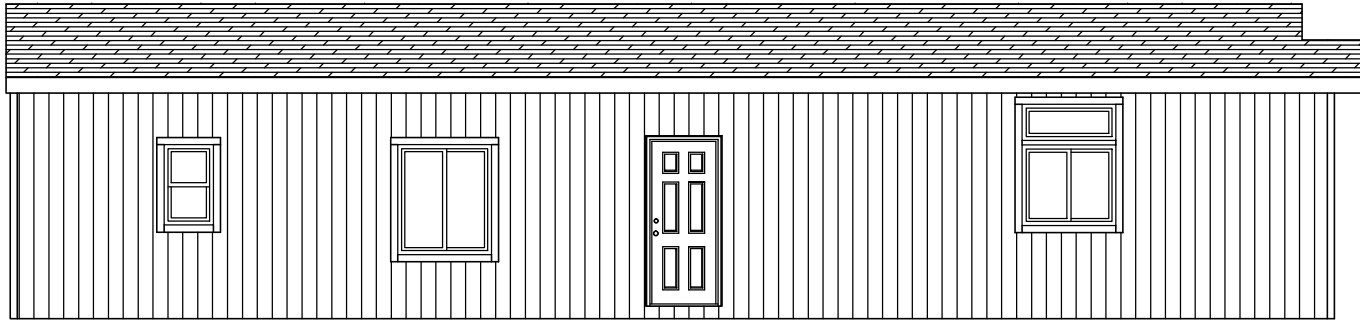
KB-55-LT101

SHEET NO.:

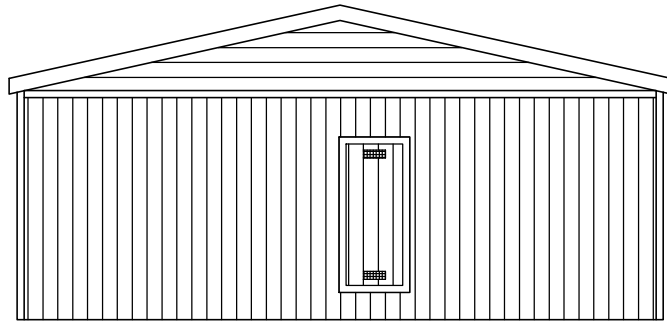
**AE-103**

PAGE:

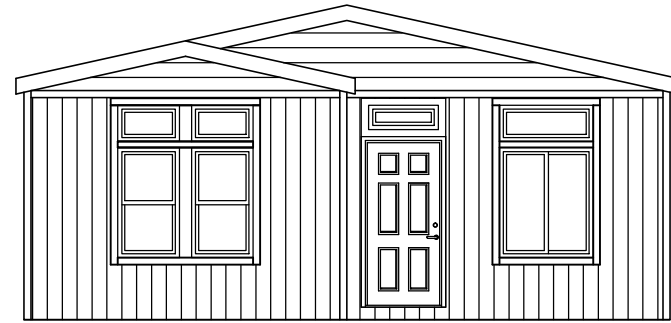
1 OF 1



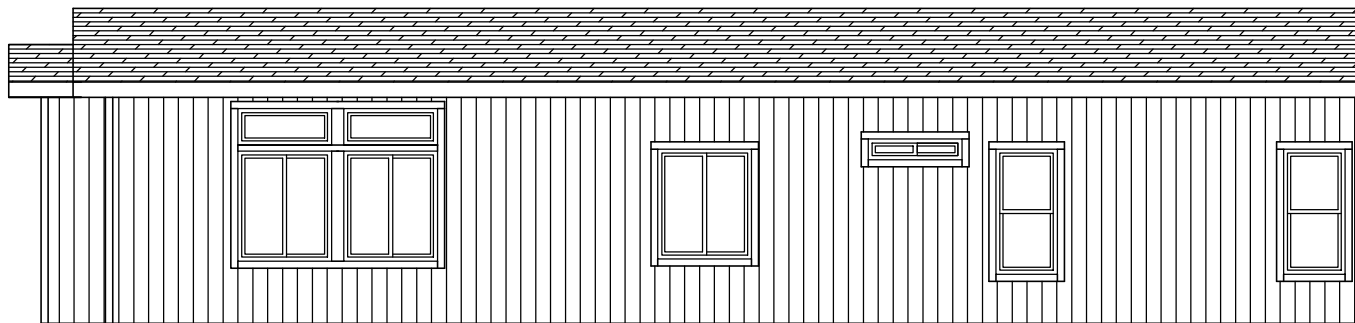
RIGHT



REAR



FRONT



LEFT



299 N. Smith Ave., Corona CA 92880

PROPRIETARY AND CONFIDENTIAL  
 THESE DRAWINGS AND SPECIFICATIONS ARE ORIGINAL,  
 PROPRIETARY AND CONFIDENTIAL MATERIALS OF  
 CHAMPION HOME BUILDERS INC.  
 COPYRIGHT © 1976-2015 BY CHAMPION

APPROVER'S SEAL

MODIFICATIONS

MODEL:

**KB-55**

54-8/52/26-8-3BR

TITLE:

**ELEVATION- STD**  
 STANDARD (REVERSE) - NO PORCH

DATE: 6-03-11

SCALE: 1/8" = 1'-0"

FILENAME:

KB-55-LT101

DRAWN BY: BMS

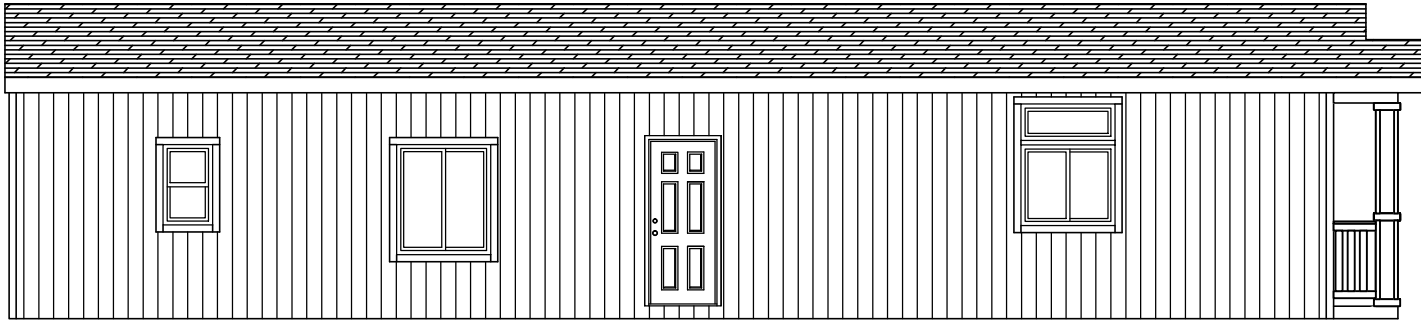
CHECKED BY:

SHEET NO.:

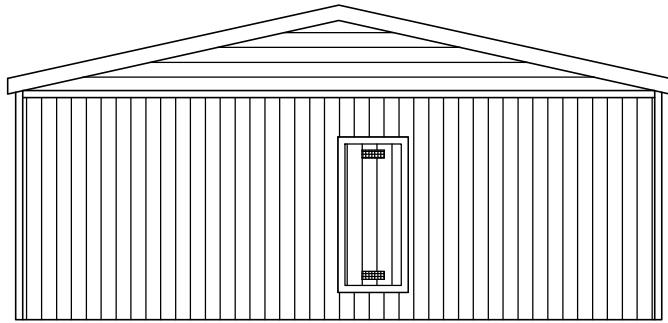
**AE-201**

PAGE:

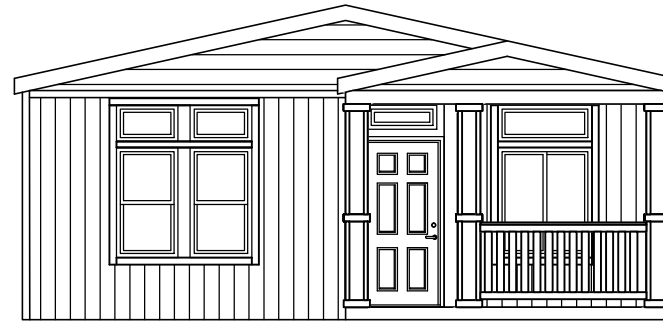
1 OF 1



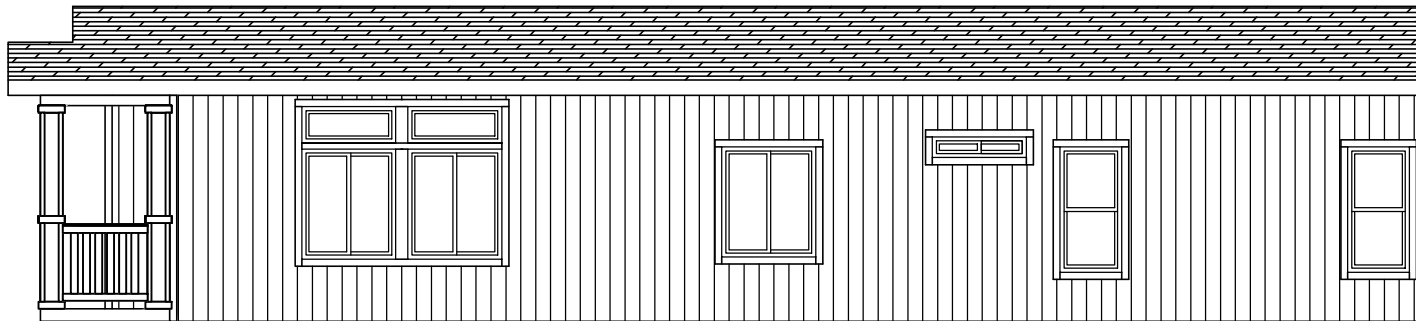
RIGHT



REAR



FRONT



LEFT



299 N. Smith Ave., Corona CA 92880

PROPRIETARY AND CONFIDENTIAL  
 THESE DRAWINGS AND SPECIFICATIONS ARE ORIGINAL,  
 PROPRIETARY AND CONFIDENTIAL MATERIALS OF  
 CHAMPION HOME BUILDERS INC.  
 COPYRIGHT © 1976-2015 BY CHAMPION

APPROVER'S SEAL

MODIFICATIONS

MODEL:

**KB-55**

54-8/52/26-8-3BR

TITLE: **ELEVATION-OPT PORCH**  
 OPTIONAL (REVERSE) FRONT PORCH

DATE: 7-13-10

SCALE: 1/8" = 1'-0"

FILENAME:

DRAWN BY: BMS

CHECKED BY:

KB-55-LT101

SHEET NO.:

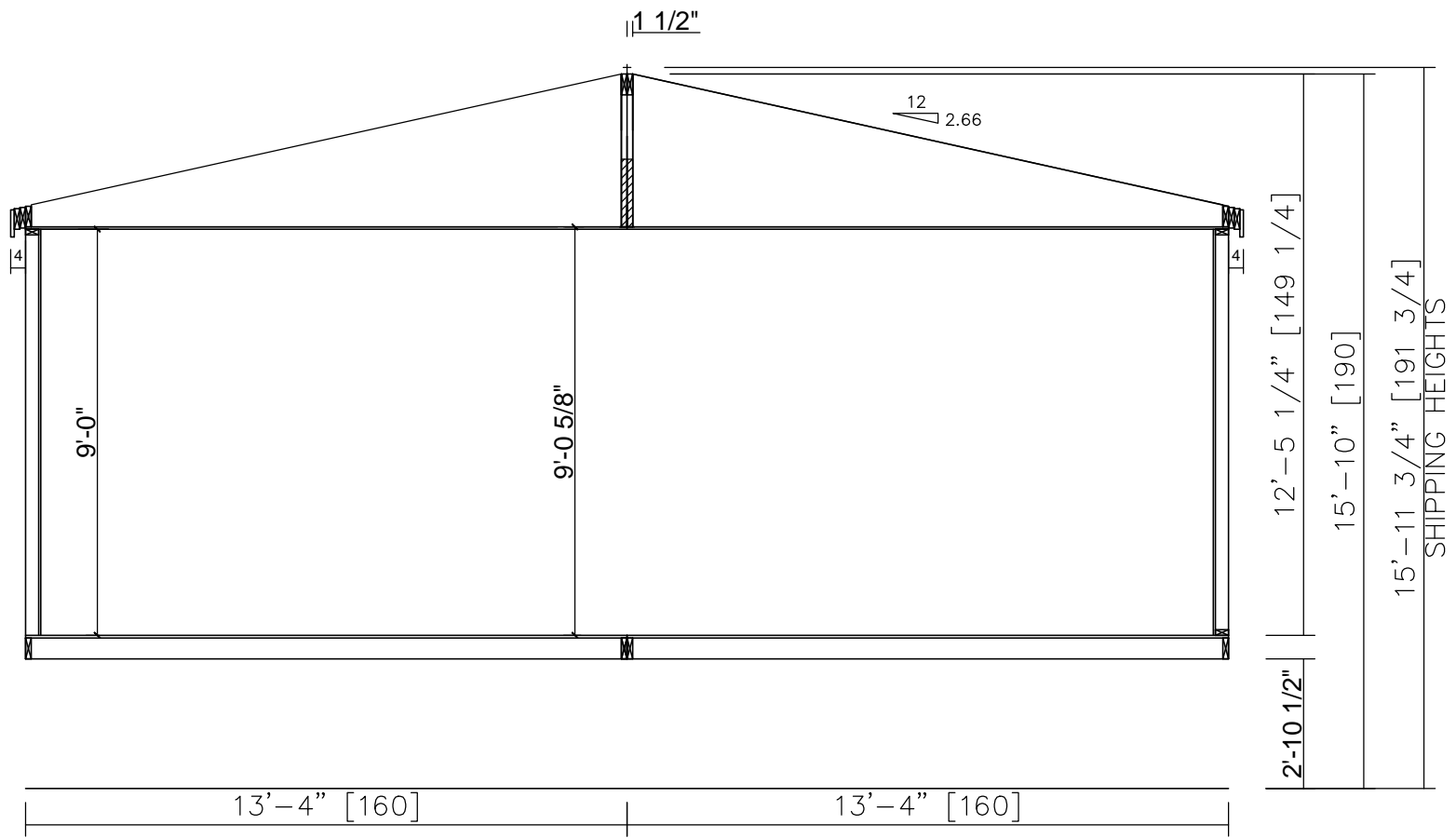
**AE-202**

PAGE:

1 OF 1

160-2.66FC

160-2.66F



**Silvercrest** CHAMPION  
 MANUFACTURED BEAUTIFULLY™  
 299 N. Smith Ave., Corona CA 92880

PROPRIETARY AND CONFIDENTIAL  
 THESE DRAWINGS AND SPECIFICATIONS ARE ORIGINAL,  
 PROPRIETARY AND CONFIDENTIAL MATERIALS OF  
 CHAMPION HOME BUILDERS INC.  
 COPYRIGHT © 1976-2015 BY CHAMPION

APPROVER'S SEAL

MODIFICATIONS

6-SEE REV LOG TS 7/22/10  
 7-GHANGE EAVES TO 6" BMS 7-15-11

MODEL: **KB-55**  
 54-8/52/26-8-3BR

TITLE: **CROSS SECTION**

DATE: SCALE: 1/8" = 1'-0" FILENAME:  
 DRAWN BY: BMS CHECKED BY: HNAGE BEAM KB-55-LT101

SHEET NO.: **AS-101**

PAGE: **1 OF 1**