

VISTA+
Handheld Inspection Lamp



The **VISTA+** is the 2nd generation of the Vista Smart UV LED Lamps. With the unique features inherited from the first generation VISTA (perfect integration of UV LED lamp and Android OS), the VISTA+ carries a 13 Mega-Pixel HD camera, with a built-in UV filter to avoid glare in photos, OTG function, intelligent accessory connection, real-time data streaming, crack dimension measurement (when connected to the Vista Eye.)

VISTA+ Features:

- Safe and Pure UV-A emissions with peak wavelength of 365-370nm. Negligible visible light to safeguard visual inspection.
- Wide and Uniform Beam coverage, no hot spots.
- Flexible Charging: Powered by both electrical mains and built-in batteries with power indication.
- Certified to Meet International Standards including: ASTM E1417, ASTM E1444, ASTM E709, ASTM E2297, ASTM E3022, RRES90061

Camera & System Performance

- Smart Operating System: customized Android system. Unlimited online software. Wi-Fi, Bluetooth and USB transmission.
- Real-time Data Streaming via Wi-Fi and USB connections,
- Special PC software designed for real-time graphic synchronization between a PC and the Vista+.
- Enables the support of remote inspection and further analysis.

Crack Dimension Measurement

Accurate crack dimension measurement is now possible using the Vista Eye and software on the Vista+ or on a PC.

- **Measurement Range:** 0.01-7mm. **Touch Screen:** Zoom In & Out.
- **Zoom in and out.** 12X magnification. **Screen Resolution:** 720 x 720.

The **VISTA EYE** is a special crack dimension measurement and evaluation accessory with UV and white lighting, compatible with the Vista+, and can be connected to laptops as well. Linked with the Vista+, the Vista Eye can operate as an UV/WL endoscope, taking photos of the finest cracks with a high resolution, clear display. The cracks can be measured through the built-in app in the Vista+ or dedicated PC software.

Built-in High Resolution Camera: customized Sony camera with 2 Mega-Pixel CCD.

UV Light and White Light Switch: 2 UV LEDs and 2 White Light LEDs

Adjustable Intensity: Continuous intensity adjustment for different fluorescent brightnesses for optimal graphic output.

The Vista Eye enables precise dimension measurement of fine defects, delivers the operator an Endoscope function, and is a great tool for PSM-5 (TAM) panel degradation test.

Crack Measurement Range:

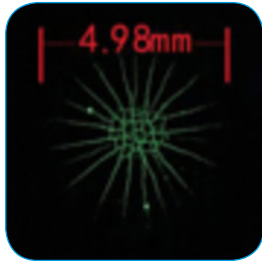
0.01 - 7mm



Changeable Lens



UV/White Light Endoscope



Precision Measurements



Zooming Function



Android Based O/S

VISTA+ Optical & Electrical	
LED	3 UV LEDs, 1 white LED
UV-A Irradiation (at 380mm/15ins)	4500μw/cm2
Visible Light	<5 Lux
Peak Wavelength	365-370nm
Minimum Beam Diameter	170mm(>1,000μw/cm2 UV-A intensity) 250mm(>200μw/cm2 UV-A intensity)
Minimum Working Distances	WD≤13nm
Expected LED Lifespan	20,000 hours
Weight	880g (2lb)
Power Supply	Battery & Mains
Input Voltage	Mains:110-240V 50/60Hz
Battery Type	2* Rechargeable Lithium Battery(18650)
Battery performance	Operating time: 1h30min
Ambient Conditions	
Operating Temperature	41-113°F(5-45°C)
Storage Temperature	41-113°F(5-45°C)
Humidity during operation	Maximum 90% relative humidity (Non-condensing)
Air humidity, storage	Maximum 90% relative humidity (Non-condensing)
Standards	
Complies with ASTM E1417, ASTM E1444, ASTM E709, ASTM E2297, ASTM E3022, RRES90061	

VISTA+ Camera & System Specification	
Camera Pixel	13 Mega Pixels
Screen Dimension	7.62 x 7.62 cms / 3 x 3 inches
Screen Resolution	720 x 720 pixels
Internal Storage	32GB TF Card
Photo & Video	Playback support
Data Transmission	USB, Wi-Fi, Bluetooth
White Balance	Automatic White Balance
Focus	Auto Focus and Manual Focus
App	Special Designed APP for Dimension Measurement Unlimited Online APPs (Email, Facebook, Twitter, etc.)
Language	English, French, Germany, Italian, Chinese, etc.,
Operating System	32 Bit Windows & 64 Bit Windows
Crack Measurement Range	0.01 - 7mm
Power Supply	Battery & Mains

VISTA+ Eye Specification	
Camera Pixel	2 Mega Pixels
Power Source	Connect PC or Phoenix Supreme via USB
LED Source	2 UV LEDs, 2 White LEDs
Weight	300g / 0.66lbs
Power Supply	Battery & Mains

Further lamps available from Baugh & Weedon:



APOLLO 365 Series

Module-based Overhead NDT LED UV Panel

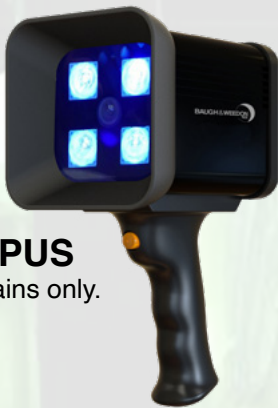
Apollo 365

8 UV LEDs, 2 White light LED, 480x500mm.
Adjustable intensity: 2500-4500 μ w/cm²

Apollo 365 XL

16 UV LEDs, 4 White light LED, 730x520mm.
Adjustable intensity: 4000-6500 μ w/cm²

HANDHELD UV LIGHTS



OPUS
Mains only.



IRIS
Standard &
Aerospace
models
available.



SPIRIT
Explosion-proof
certification.



LUMATORCH 2



JAGUAR

Head-lamp/Spray bottle lamp



Distributed by:

Tel: +44 (0)1432 267671
sales@bw-nde.com
bw-nde.com



BAUGH & WEEDON
NDE

