



J O I N T V E N T U R E

A Certified Service-Disabled
Veteran-Owned Small Business (SDVOSB)



LANDSCAPE ARCHITECTURE
ENVIRONMENTAL PLANNING

DUNS: 116-76-4082 | CAGE Code: 86X64



Who we are

The **WERK + Logan Simpson Joint Venture (WLSJV)** provides landscape architecture, engineering, environmental, cultural resources, and planning services. Our in-house staff includes landscape architects, environmental planners, archaeologists, historic preservationists, biologists, travel management specialists, and specialists in visual resources; public involvement; Clean Water Act permitting, and graphics/GIS. The WLSJV has decades of experience managing and successfully performing on federal contracts.

WERK is a protégé of Logan Simpson Design under a federal Mentor-Protégé Agreement, and the WERK + Logan Simpson JV is a **certified Service-Disabled Veteran-Owned Business (SDVOSB)**.

For information on the WERK + Logan Simpson JV, contact:

JESSE WESTAD

WERK | urban design

P. 602-429-9922 ext 700

jesse@werkurbandesign.com

TRACE BAKER

Logan Simpson Design Inc.

P. 480-967-1343

tbaker@logansimpson.com





F-35A LOLA IMPROVEMENTS

This project consisted of providing new support structures for the new F35A being introduced to Nellis Air Force Base. The improvements consisted of a Live Ordnance Loading Area (LOLA); areas for F35As as well as A-10s; overhead shade structures; a 14,300 sf LOLA Crew Operations Facility; a parking lot; access road improvements; and drainage/landscape in accordance with Antiterrorism Force Protection (AT/FP) standards.

WERK also provided all of the associated 3D modeling for the project. Consideration went into providing a natural look for the drainage basins located around the facility and adjacent parking lot.

CLIENT: U.S. Army Corps of Engineers/U.S. Air Force

TEAM: WERK | urban design

LOCATION: Nellis Air Force Base, Nevada







*"It's a place not only veterans,
but civilians, can go ... and
reflect on what this country is
about, and what veterans have
done for our country."*

*- Jackie Williams
(Brian Mancini's mother)*

VETERANS REFLECTION CIRCLE IN HONOR OF SFC BRIAN MANCINI

Honor House founder Sergeant First Class Brian Mancini lived a life of service that did not end when he retired from the Army. His service lasted from 1997 to 2011, including two tours as a medic in Iraq. In 2007, he was severely wounded by a roadside bomb in Baghdad. Despite a traumatic brain injury (TBI) and Post Traumatic Stress Disorder (PTSD), Brian founded Honor House, an organization dedicated to helping service members transition back to civilian life. Brian died in 2017, but he touched many lives and left a lasting legacy that continues to this day. The Veterans Reflection Circle is a special place that supports his legacy while honoring his life as a decorated veteran and community leader. Those who visit the Veterans Reflection Circle in Surprise are inspired by his life and appreciate the sacrifice that all veterans make each day.

CLIENT: City of Surprise

TEAM: Logan Simpson Design Inc. & WERK | urban design

LOCATION: Surprise, Arizona







WESTERN AREA POWER ADMINISTRATION/BUREAU OF RECLAMATION FACILITIES UPGRADE

The current Glen Canyon Warehouse Building under use by the Bureau of Reclamation's (Reclamation's) Glen Canyon Field Division is a 50-year-old 34,000 sf building. Executive Order 13693, Planning for Federal Sustainability in the Next Decade, established revised 2016 Guiding Principles for Sustainable Federal Buildings (Guiding Principles). This project is being classified as a modernization and will now house office space for both Western Area Power Administration and Reclamation personnel. The site also hosts a 4.7-acre fenced yard for associated equipment and materials. WERK is providing landscape architectural services for upgrading grounds around the building to reduce water consumption, provide shade for passive cooling, and upgrade existing drainage systems for a renewed multiuse facility. The project supports Reclamation's sustainability goals and complies with the Guiding Principles.

CLIENT: Western Area Power Administration/Reclamation

TEAM: WERK | urban design

LOCATION: Page, Arizona



NPS REGION III HEADQUARTERS/ SANTA FE TRAILS BUILDING

Logan Simpson is developing a stormwater pollution prevention plan, historic preservation treatment plan, and a cultural landscape protection plan as required by the National Park Service for the 24,000 sf Old Santa Fe Trail Building (OSTB) in Santa Fe, New Mexico. The OSTB is listed as a National Historic Landmark and a Cultural Landscape and serves as NPS Region III headquarters. It is the largest adobe office building in the United States and stands on an eight-acre site along the former path of the famous Santa Fe Trail. The cultural landscape plan identifies on-site areas of importance as well as means/methods of preserving and protecting them. Logan Simpson will also provide a revegetation plan.

Construction will include the removal of the exterior skin of the building and exposing the original adobe bricks, which were installed in the 1930s. The bricks will be inspected and tested for structural integrity and removed/replaced as needed. The exterior skin will be reapplied using era-correct tools, materials, and construction methods. Logan Simpson developed construction techniques to preserve and protect historic features in and around the OSTB and to move men and materials through the historic structure to interior courtyards with minimal impacts. Due to the Cultural Landscape status, protection and preservation of on-site trees is vital to the NPS and to the success of the overall project to help protect the building's historic landscape setting. Logan Simpson worked closely with the general contractor, renovation contractor, and NPS staff to ensure that all documents produced could easily be approved by the reviewing agency in order to expedite on-site construction activities.

CLIENT: Xanterra/National Park Service

TEAM: Logan Simpson Design Inc.

LOCATION: Grand Canyon, Arizona







GRAND CANYON BRIGHT ANGEL LANDSCAPE REHABILITATION

The Bright Angel Cabin Complex at the South Rim of Grand Canyon National Park was originally constructed in the early 1900s and has been affected by decades of stormwater runoff that has caused severe erosion around historic cabin structures. Working for NPS concessionaire Xanterra, Logan Simpson and Xanterra project managers are working closely with NPS staff to develop a plan to manage and correct onsite drainage. Due to the historic nature of the site, care must be taken to ensure the historic structures and mature landscape is impacted as little as possible and to allow the public to continue to use the cabins and South Rim Trail. In addition to site visits and site assessments, Logan Simpson developed a white paper that presented photorealistic simulations about how specific drainage solutions may appear once installed. These solutions were based on historic photographs, which provided information about the original grades and the evolution of the landscape over time. The Logan Simpson project team consisted of landscape architects, historic preservation specialists, and general support staff; the team was enhanced by a civil engineering firm and a local survey company.

CLIENT: National Park Service/Xanterra

TEAM: Logan Simpson Design Inc.

LOCATION: Grand Canyon, Arizona



*Five options presented by the team:
building lift, concrete vault, open
moat, open moat with a concrete
base, and site grading*

WEAVER MOUNTAIN FIRE STATION

Logan Simpson prepared landscape plans for the Bureau of Land Management (BLM) Weaver Mountain Fire Station near Wickenburg. The landscape design featured a palette of native plant species that will be able to survive on rainfall alone, once established, because the client specified that no permanent irrigation would be provided. Included in the palette were velvet mesquite and foothills Palo verde trees; shrubs such as creosote bush, bursage, and fairy duster; and purple threeawn grass and banana yucca to serve as accents. Logan Simpson incorporated bioswales into the site grading to capture rainwater runoff from the building roof and paved surfaces, to benefit the plantings. Riprap was placed on the bottom of the bioswales to provide additional protection against soil erosion, because the site grading was designed so that the bioswales would retain water except in the case of a large rain event, when they will overflow and drain downslope. A native seed mix was developed for the site to augment the containerized plantings.

CLIENT: Bureau of Land Management

TEAM: Logan Simpson Design, Inc.

LOCATION: Wickenburg, Arizona









ECO PHOENIX

ECO PHX is being created to meet an under-served market of environmentally conscientious residents. ECO PHX is a purposefully sustainable, infill development of 70 apartment homes that demonstrates what is possible with today's technology. To accomplish this objective, we approached the design process from the inside out, with sustainability components at the heart of the building's design. The result is an economically feasible structure integrating sustainable building systems that create a distinctive residential community. Our goal was to introduce biomimicry into the project by imitating the natural processes of the native Sonoran Desert. Curb cuts will bring in stormwater into the bioswales and provide a dual function of cleaning the water through vegetation as well as supplementing irrigation needs. The green wall mimics Arizona canyons and helps to cool the building. Irrigation is provided completely by utilizing the waste shower water from the residents, which is vital in this arid climate. ECO PHX sets the standard for future development in Phoenix.

CLIENT: Habitat Metro

TEAM: Logan Simpson Design Inc. & WERK | urban design

LOCATION: Phoenix, Arizona





WELLSPRING HEALTH AND WELLNESS PARK CONCEPTUAL MASTER PLAN

The City of Goodyear intends to convert a two-mile, 120-acre strip of land adjacent to I-10 into a world-class health and wellness resource. Bordered by three medical facilities and with few site constraints, the master plan for Wellspring Park will be developed as a public-private partnerships (P3). Inspired by the emphasis on human health, the design team developed three conceptual plan alternatives that drew inspiration from human life cycles, body systems, and the effect of nature on human health. The final conceptual master plan—"Mind, Body, and Spirit"—approaches health holistically. Recreation opportunities are geared toward fitness, adventure, gathering, physical recuperation, meditation, remembrance, environmental education, and healthy habits, all while immersed in an enriched landscape setting. Because of the scope, scale, and funding needs of the project, the master plan divided the park into "precincts," each of which has a different wellness focus and aesthetic character that is suitable for individual development. In addition to developing the master plan, the design team created the park's logo and developed a high-end fly-through video to demonstrate the benefits to potential users and contributors.

CLIENT: City of Goodyear

TEAM: Logan Simpson Design Inc. & WERK | urban design

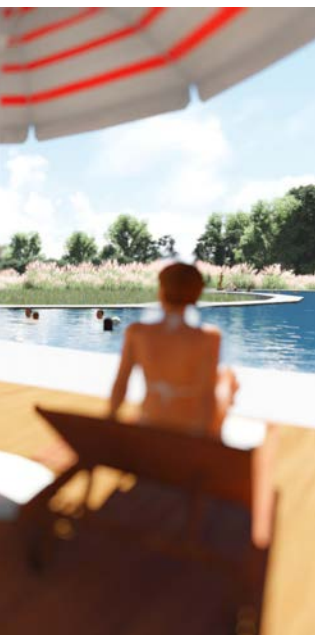
LOCATION: Goodyear, Arizona





"People want to see this be a sustainable space with a big vision that incorporates nature into wellness activities."

- Nathan Torres, City of Goodyear Parks and Recreation Director



HEADQUARTERS

455 N. 3rd St., Ste. 1010
Phoenix, AZ 85004
P. 520-249-7234

TEMPE

51 W. Third St., Ste. 450
Tempe, AZ 85281
P. 480-967-1343

FLAGSTAFF

201 E. Birch Ave., Ste. 10
Flagstaff, AZ 86001
P. 928-226-0016

TUCSON

177 N. Church Ave., Ste. 607
Tucson, AZ 85701
P. 520-620-0441

SALT LAKE CITY

8 E. Broadway, Ste. 300
Salt Lake City, UT 84111
P. 801-364-0525

FORT COLLINS

213 Linden St., Ste. 300
Fort Collins, CO 80524
P. 970-449-4100

EUGENE

65 Centennial Loop, Ste. C
Eugene, OR 97401
P. 541-368-5184

BOISE

223 N. 6th St., Ste. 225
Boise, ID 83702
P. 208-995-5282



<http://logansimpson.com/werk-logan-simpson-sdvosb-certified-joint-venture/>
www.werkurbandesign.com/werk-logan-simpson-jv-1