

Sample 627-110923-049

Guava Kush

Batch/Lot # 23116-GK

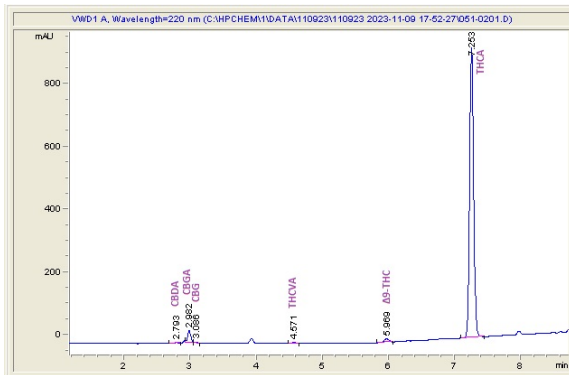
Sample Submitted: 11-09-2023; Report Date: 11-15-2023

# Guava Kush

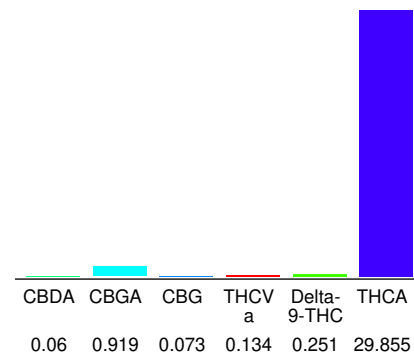
Plant Material: Hemp Flower

Batch/Lot # 23116-GK

## Chromatogram



## Cannabinoid Profile



## Cannabinoid Profile by HPLC

**0.25%**

Delta-9-THC

**0.00%**

CBD

**31.29%**

Total Cannabinoids

Cannabinoid	% wt	mg/g
CBDA	0.06	0.6
CBGA	0.919	9.19
CBG	0.073	0.73
THCVa	0.134	1.34
Delta-9-THC	0.251	2.51
THCA	29.86	298.55
<b>Total Cannabinoids</b>	<b>31.29</b>	<b>312.9</b>
<b>Calculated Total THC</b>	<b>27.05</b>	<b>270.49</b>
<b>Calculated CBD Yield</b>	<b>0.05</b>	<b>0.53</b>

Calculated Total THC = Delta-9-THC + 0.877 \* THCA

Calculated Maximum CBD Yield = CBD + 0.877 \* CBDA

**Marin Analytics, LLC**

250 Bel Marin Keys Blvd, Suite D4  
Novato, CA 94949

833-321-TEST / info@marinanalytics.com

**Mike Clemmons**  
Lab Manager