

Text by Dirk Gillabel, © 2014; www.soul-guidance.com, suncreations@earthlink.net
This text may be freely distributed provided it is not altered and no fee is charged for it,
and it includes the Copyright Notice.

Contents:

[Healing With the Rodin Coil](#)
[My Healing Experiences with the Rodin Coil](#)
[How Does the Rodin Coil Heal?](#)
[Setting Up the Rodin Coil for Healing](#)
[The Vortex-based Mathematics](#)
[Coil Specifics of the Rodin Coil](#)

Healing With the Rodin Coil

Everything on this page is my limited understanding of how the Rodin coils works, and how it can be applied to healing based on my experiences. In regards to healing, I do not claim anything. The following is for information and experimental use only.



Amazing Healing

Over the past years (as of 2014) I had come across the Rodin coil when browsing the Web and YouTube. This year I came across a very interesting [YouTube video](#), part of the Tesla Tech Conference held in 2011. It shows the testimony from John Fiala, chief engineer for Tesla Tech, who experienced a third degree burn from a practice mortar round during a demonstration on October 9, 2010. The surgeon on site told John that he would need 3-4 skin grafts over a period of 1-1/2 - 2 years before skin would grow back in the affected area. Using a Rodin type coil and the 512 Hz, 256 Hz, and the 432 Hz as audio frequencies to drive to the coil,

John's deep wound had healed and had skin growth in 32 days with no surgery or skin grafts!

This is an extra-ordinary healing. You would assume that people would jump to use a Rodin coil for their own healing. However, I couldn't find anything on YouTube nor the Web of anyone who has used a Rodin coil for healing purposes. There are numerous YouTube videos of people who made a Rodin coil themselves and experiment with it because of the particular physical effects associated with this type of coil, like spinning metal balls, the loudspeaker effect, over-unity effects, etc. But healing effects? Nobody seems to be interested in it.

I did find a paper made by Marko Rodin, on whose mathematics theory the Rodin coil is based, called the [Rodin Solution Project](#), published in 2006, in which he gives an extensive overview of all the possible ways the Rodin coil can be used in technology. One small paragraph, on page 20-21, he talks about the health effects from using a Rodin coil:

"BIOPHYSICAL HARMONICS:

Biophysical harmonics, which is the same as neurogenesis, is the secret of how to repair or regenerate areas of the brain damaged through injury or disease. In 2005, medical researchers were able to achieve regeneration of mammal organs, bones and tissue, but not of brain tissue. In his early research, Marko Rodin began exploring how sound effects the human brain, and using the biophysical harmonics of the Rodin Torus Coil to treat autism and brain damage. The foundation of understanding the human brain's neurosynaptic connections resides in the mathematical patterns Rodin has discovered, which model how the brain – a form of a torus - wires itself."

If he began exploring the Rodin coil to treat autism and brain damage since 2006, why haven't we heard about it since? Marko Rodin has made a lot of fantastic claims about his coil, mostly about possible application in the electronics field. But we don't see much, if any, interest from scientific people or electronic enthusiasts to investigate the coil in a scientific manner.

My Healing Experiences with the Rodin Coil

The other chapters on the Rodin Coil page explain how the coil is set up for healing purposes, and how the coil is constructed and what its magnetic field is. Here I am giving some initial experiences I had with healing by using this coil.

Over the past many years (it's now 2014) I have had severe health problems. I managed to get better by changing my diet to healthy food and life style. Especially [MMS and the zappers](#) worked well. However this year my intestinal cramps were getting worse to the point that I had them almost everyday. I discovered I had become lactose intolerant and fructose intolerant. I couldn't eat

fruit anymore. I couldn't eat much either. Not to mention that I didn't feel that good. They usually call it Irritable Bowel Syndrome, and I guess I had some big ulcer or something like that.

In August my Rodin coil arrived, and used it on my belly for 20 minutes, twice a day. After one month the intestinal cramps had disappeared completely. My belly felt good, and I had a great appetite again. I could eat big meals again without any problems. I can eat fruit again. I find this amazing, because nothing else had worked before.

I also developed a lot of pain in my knee joint and muscles down my leg, because of an infection of a certain microbe. It was so bad, I could hardly walk. I had tried the MMS and a pulser but there was no improvement at all. Then I used the Rodin coil on my knee for almost an entire day, on and off as I had to go outside frequently. The next day, my knee area was better for about 80-90%! I kept up the same regime for about a week and a half, during which improvement was more gradual. This was probably due to the fact that the damage to the nerves and cartilage/bone is more difficult to repair. After two weeks my knee was completely normal. Again, to me this is an amazingly fast healing.

What I also noticed was, that my vision has improved. Not that much (at this point I have used the coil for about a month and a half, but my vision is now definitely sharper. In the beginning of August the text on my computer screen was so fuzzy I had to use my close-up glasses, because I couldn't read the text anymore with my normal glasses. Now, with my normal glasses, the text is sharp. My wife, who also has used the coil, has noticed the same.

A week or so later a sensitive spot appeared again, on my knee cap. I used the coil again most of the day, and the next day it was gone.

By my own experimentation I have come to the conclusion that the Rodin coil does not destroy any pathogenic microbes. The coil somehow stimulates the bodily area exposed to its field and induces an increased healing effect. Its field seems to stimulate the body's natural inherent healthy state of being.

In my opinion, the physical body is but an extension of the aetheric body. The aetheric body is the energy body, also called the subtle body. This aetheric body can be seen as a template containing all the information for not only the development of a growing body, but also its perfect healthy state in all aspects, for cells, circulatory systems, organs etc. This information is always there, present in the aetheric body. The physical components, like the atoms and molecules we absorb by food, drink and breathing, use this information to go to the right places to form and maintain the physical body. Disease and ailments happen many ways. Physical toxins can enter our body, or emotional traumas cause constrictions in the energy flow of the aetheric body resulting in corresponding physical ailments, because the physical body always follows the aetheric body. That is why true, lasting healing always must happen on the energy level first.

What the Rodin coil seems to do is that it works on the aetheric body, strongly

stimulating the original healthy pattern that is always present but often obscured by traumas, negative energetic influences, or physical obstructions like toxins. When the healthy pattern in the aetheric energy body is strongly stimulated, it will have a strong effect on the physical components of the body, nudging them into the same healthy pattern.

There are other electric devices that have the same curative effect, in spite of being based on different physics. Tesla coils for example, the Lakhovsky coil, the Priore machine in France, and others. They all work on the energy level.

How Does the Rodin Coil Heal?

When you see the healing results from applying the Rodin coil, any explanation about how it works doesn't really matter. However here are my own speculations about the healing effect from the Rodin coil.

I think the magnetic field of the Rodin coil has little to do with healing. Toroidal coils, by their very nature, concentrate their magnetic field inside the toroidal (doughnut) shape. They have very little magnetic field outside the toroidal shape. That is why they are used in electronics to minimize any magnetic influence on other parts of the electronic circuit.

On top of that, the magnetic field of the Rodin coil is largely canceled by the bifilar winding.

I think that the healing effect is primarily due to an inflow of aether energy (or life energy) restoring the natural balance or harmony of the energy body and by extension the physical body.

The bifilar winding of the two coils, although the wires are lying next to each other in two series and not individually, is canceling part of the magnetic field. It has been speculated that the part of the magnetic field that is canceled, must have moved its energy to the aetheric level. The reason for this is the law of conservation of energy, which states that the total energy of an isolated system cannot change; it is said to be conserved over time. Energy can be neither created nor destroyed, but can change form.

There are different opinions about where this energy goes. Some say that the cancelled magnetic field creates scalar waves, others say it creates a scalar field around the device. It is also possible that an aether vortex is formed. I suspect that the latter may be the case with the Rodin coil. I think a higher energy state is created in the aether, in the form of a rotating torus/vortex, which draws aether energy in and out.

This way, the flow of aether provides the body with more energy. The body is then able to restore its organs, cells and functions to their natural healthy state. More energy means more order. Diseased cells have lost their natural order. When they are given more energy then they can restore their innate natural order, and

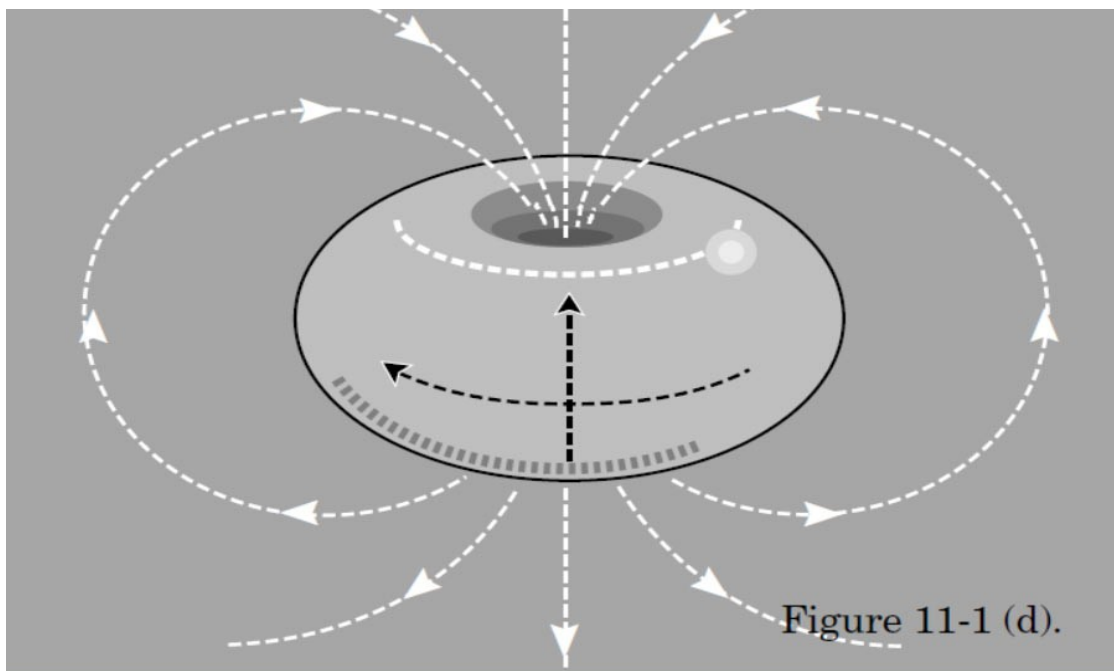
they will remove the causes of the disorder: pollutants, toxins, microbes.

The reason why I think the Rodin coil is producing an aether torus/vortex lies in an interesting chapter from the book *Aethro-kinematics* by Steven Rado. He explains that a slight friction between two opposing movements creates a local disturbance in the isotropy (=uniformity in all orientations) of the medium which eventually could evolve into a locally organized, permanent and autonomous circulatory system of a three-dimensional donut-vortex. With this in mind, one can imagine that the two bifilar windings of the Rodin coil (with the current running in opposite direction, and thus creating opposite magnetic fields), is creating a local disturbance in the Aether, resulting the formation of an aether torus/donut/vortex. This torus is rotating and spiraling structure that continuously draws in and expels aether energy (in a vortex movement, in order to maintain its existence).

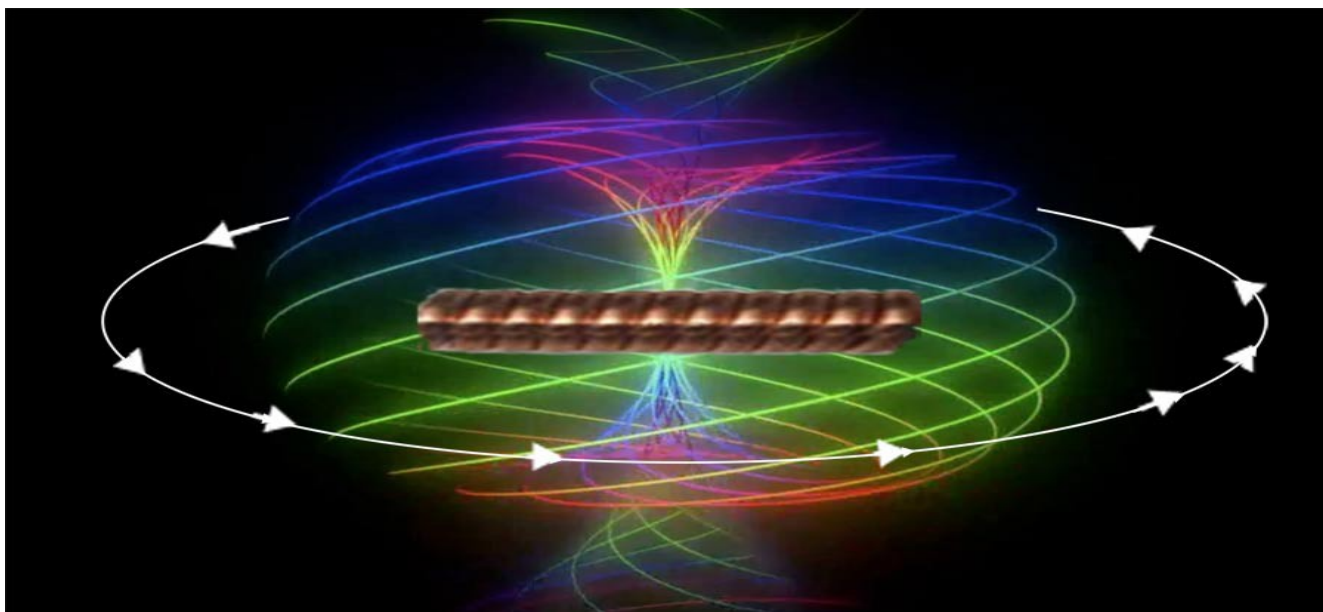
The bifilar windings also annihilate each other's magnetic field (for the most part). Tom Bearden discovered a torsion wave is created when two opposing electromagnetic fields interfere and cancel out each other's electrical and magnetic field components. The result is a longitudinal wave that vibrates in the same direction in which it travels. Torsion waves spiral around their axis, but move in straight lines (longitudinal).

It is possible that this rotating and streaming energy structure, when placed on the physical body, and thus inside the energy body, or aura, or biofield of the physical body, is having a stimulating healing effect.

If you want to know more about the formation of this aether torus, I have put an extract of the aforementioned book in the [Appendix](#).



I had a friend come over who is very energy sensitive. I had not told her anything about the coil. She had never seen it before, nor knew anything about it. When she was feeling the subtle energy around the coil, she described the energy around the coil as rotating counterclockwise (as seen from above). Then she found that it also has a spiraling vortex from the center upwards and downwards. The image below is an artistically enhanced image to give you an idea what she felt, seen from the side of the coil, which is in the middle. I found this interesting because I had measured the magnetic field of my Rodin coil a couple weeks before and had come to the same shape of field. Although the magnetic field is in my opinion static, it mimics the same shape as the aether field found by my friend.



Setting Up the Rodin Coil for Healing

Jamie Buturff, who works together with Marko Rodin, told me that it was important to supply one of the coils with one frequency and the other coil with another frequency. When the two coils are thus powered separately (can be with EM frequencies too, it does not have to be audio), then the shear effect happens, which is crucial to create the special effect of the shear. But what these special effects are is not clear to me. It still remains a mystery what it really does, aside from the electric insulation effect. I couldn't find any explanation from Marko Rodin himself.

The Rodin coil can be driven by any frequency, voltage or current, AC or DC, with any waveform or pulse. When I received my Rodin coil the instruction page advised to use the audio frequencies of 432Hz (A tone) and 256 Hz (C tone), generated by an audio frequency generator program and amplifier.

I don't know much about electronics, and most people don't either. Although it is fairly simple to get the Rodin Coil hooked up and running, it took me a while to figure out if I had done it right, and how the program worked. That is why I am giving you a step by step guide for those who are also not familiar with these technical details.

What you need:

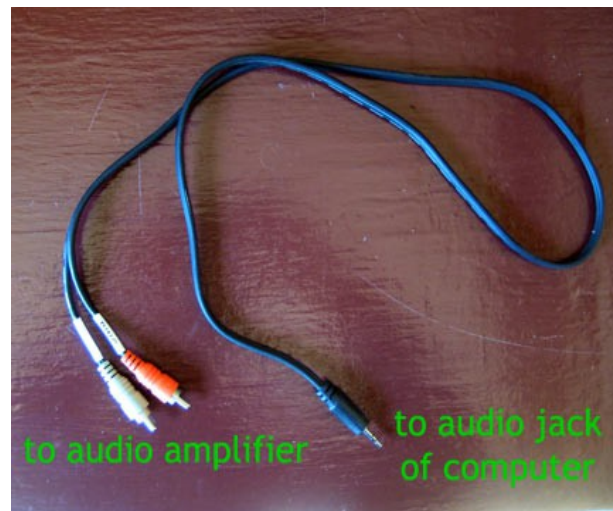
- A Rodin coil. YouTube has some instructional videos have to make one yourself. It does demand a certain amount of agility, as you have to make sure that the wire remains under tension while you are wrapping it around the coil. It is not that difficult. A good instructional video about how to wrap a Rodin coil can be found on [YouTube](#). However, now can buy one from [Spiritual Results](#), made by a coil winding machine. Maybe a little bit expensive, but it is a coil that is close to perfect. The don't give a product or factory warranty though. You do have to watch out for the leads coming from the coil. They are crimped to circular connectors. As the wire used is copper coated magnet wire, it gets brittle when the coil gets warm. I used the coil for only one months when the wire of one of the leads broke. Although the coil and the wires were fixed inside a wooden box (see below) the coil had some minor movement inside the box and that was enough the break the wire. Make sure you fix the coil too so it can't move around.
- An audio amplifier. I had one lying around from many years ago. We are sending audio frequencies to the coil, as we are interested in healing.
- A audio frequency generator program.

We will start with the amplifier.

Connect your computer to the audio amplifier.



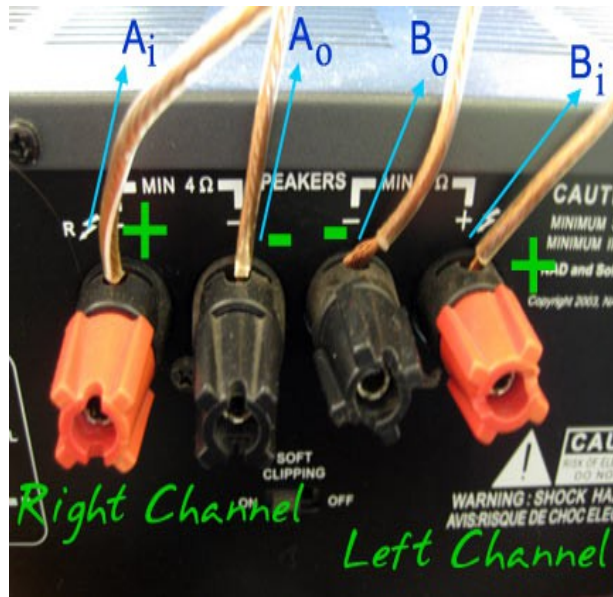
I connect the cable to the AUX input. Red to red, white to white.



This is the audio amplifier I have. The Rodin coil is wound with 24 gauge wire, and can handle only 2 Amperes for short times, before getting hot. I slowly adjusted the volume knob of the audio amplifier until the coil got warm but not hot. You have to keep checking.



The connections from the audio amplifier to the two coils of the Rodin coil have to be attached in the right way. On the picture you can see the right channel, that normally goes to one speaker; and the left channel to the other. Insert a single 16 Gauge speaker wire to each of the four jackets. The wire of + or red output of the right channel goes to the A_i (input of the A winding) connection of the Rodin coil. The wire of - or black output of the right channel goes to the A_o (output of the A winding) connection of the Rodin coil. The wire of - or black output of the left channel goes to the B_o (output of the B winding) connection of the Rodin coil. The wire of + or red output of the left channel goes to the B_i (input of the B winding) connection of the Rodin coil.



When you buy the coil from [Spiritual Results](#), the leads of the two coils are marked with their input and output connectors:

A_i (input of the A winding)

A_o (output of the A winding)

B_o (output of the B winding)

B_i (input of the B winding)

The coil is wound with 24 gauge wire, and can handle maximum 2 Amperes for short times.

If you made the coil yourself, make sure the current is opposite in the two wires.



Clamp the four wires from the audio amplifier into the alligator clips. Connect the alligator clips to the four connectors of the coil. Pay attention you connect the right wire to the right coil lead.

At this moment you can use the coil as it is.

However, when you move around, the connections, which are bare, might accidentally touch each other, short circuiting the current.

To avoid this I made a wooden box, and clamped the four wires between two pieces of wood, with screws for tightening them down. This way the leads cannot short circuit. The wooden clamps also prevents the accidental pulling apart of the connections.

You could also just wrap the connection in electrical tape. I don't like to do this. If you ever decide to unhook the coil, then you have to deal with sticky glue left on the connectors.

The wooden box is also a protection against any accidental



damage to the coil.

I then put a small lid over the leads. It is not in this picture, but I had to put a wooden piece in one of the corners to prevent the coil from moving around inside the box. I discovered that even the slight movement it had, put stress on one of the wires coming out of the coil, and it broke at the point of the connector.



And I put a removable lid on the box, held together with an elastic band. This allows for easy opening, to check if the coil is getting too warm. I also made ventilation opening in the side of the box.



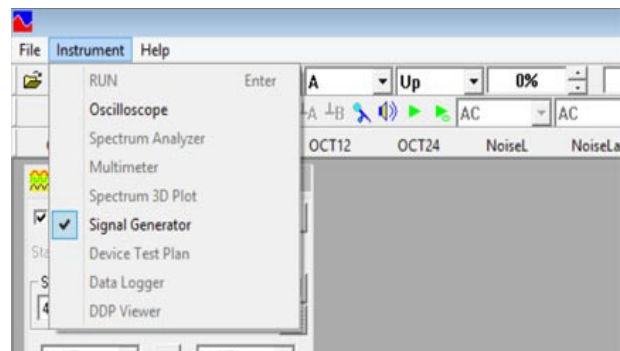
It doesn't matter if the coil is encased in a wooden box because the magnetic field, and any possible aetheric energy goes straight through it.

I can set the box on its side too. Easy to set on a table, or hold it against any part of the body, and completely safe.

Now it is time for the software. You can get any tone generator that can send audio frequencies through two channels.

I got the [Multi-Instrument](#) from Virtins Technology. They have a 20 day trial for all the features. After that you have to buy the features you actually want. The only thing you need is [SC Signal Generator](#).

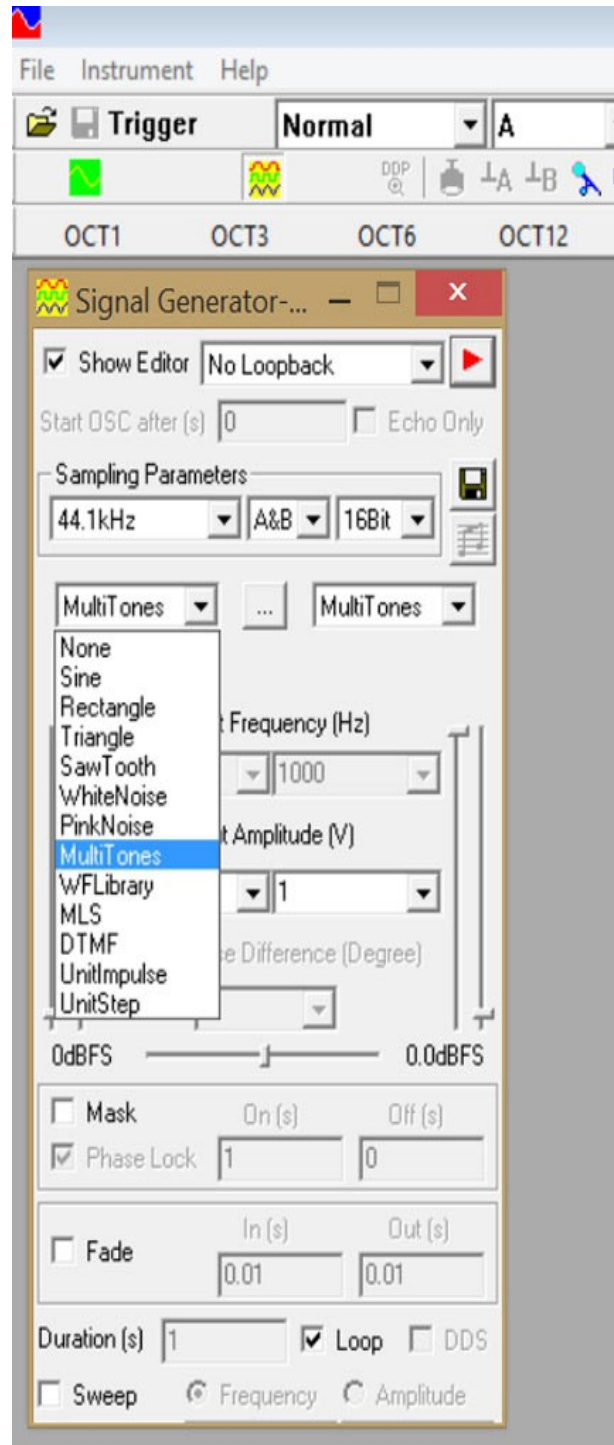
(You have to bring up the submenu in the left column of



Click on the instrument tab and choose Signal Generator.

Multi-Instrument. After installation you have to follow instructions to provide your computer generated codes to them, and wait to have the license key emailed to you. Then you are up and running.

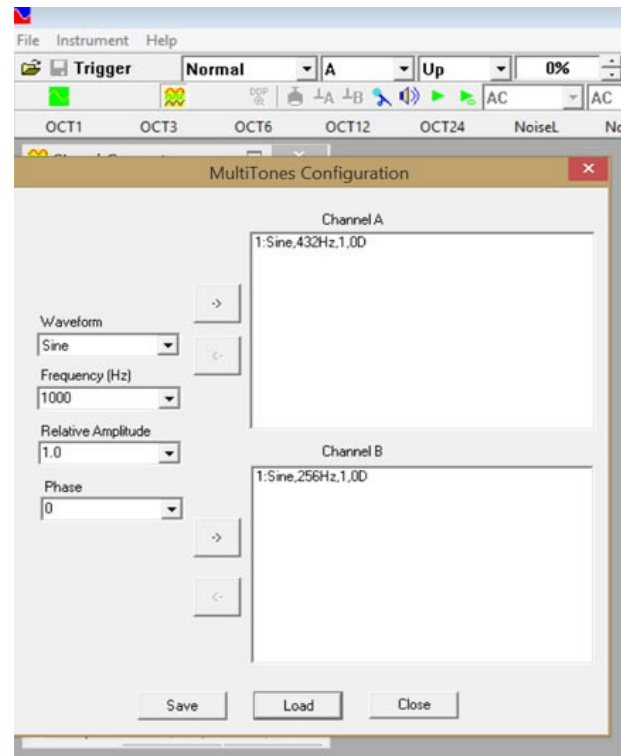
In the Signal Generator window, click on the submenu arrow, to bring up the selection for the wave form. Choose Multi Tones.



In the MultiTones Configuration window, first type in 432 in the Frequency box, then click the + sign next to the upper window to place this frequency into Channel 1. Then type 256 in the Frequency box, and click the + sign next to the lower window to place this frequency into Channel B. Then click save, and save this preset in one of your folders on your computer. Give it a file name. Click close to exit this window. One can experiment with different frequencies, and even load more than one frequency into a channel.

The wave form can also be changed (top box on the left). The default wave form is sine wave. People who are working with magnetic pulsers give the following explanation about the different waveform:

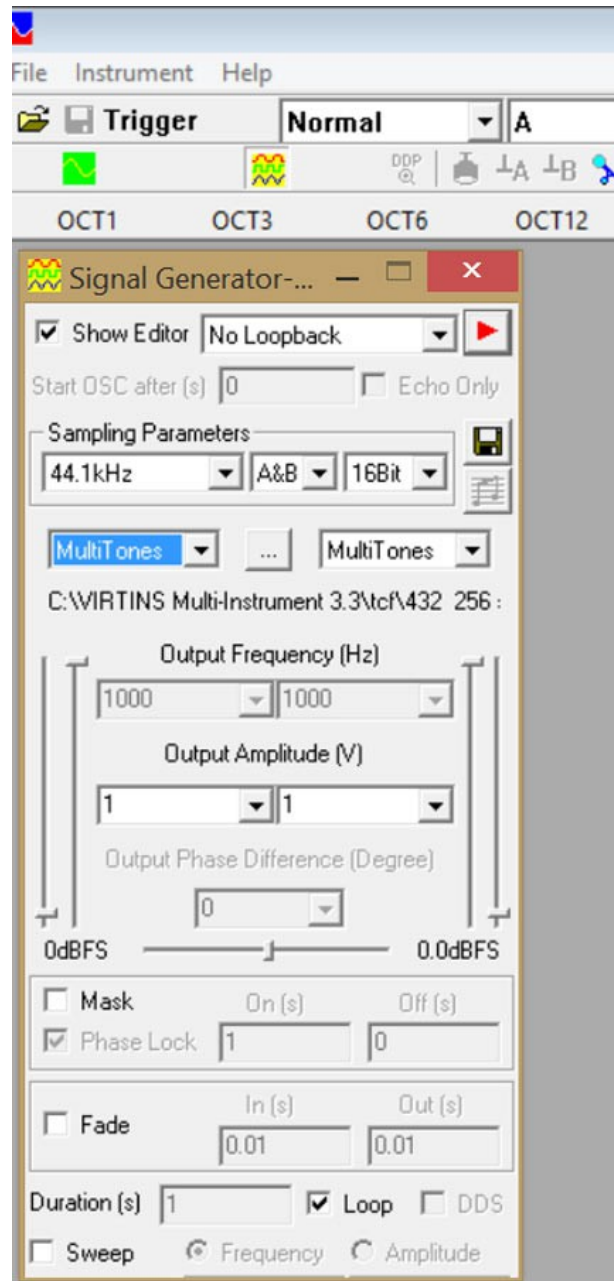
- A sine wave is the simplest wave form, with a smooth rise and fall of amplitude. For healing and regeneration.
- The square wave is ideal for breaking up cycles of pain and promote healing and regeneration. It is also used for killing pathogens.
- The sawtooth waveform is the best for to recharge and energize the body cells. With the sawtooth, you can deliver a lot of frequencies simultaneously so that all the cells will receive the proper resonate frequency. It is also good for bone



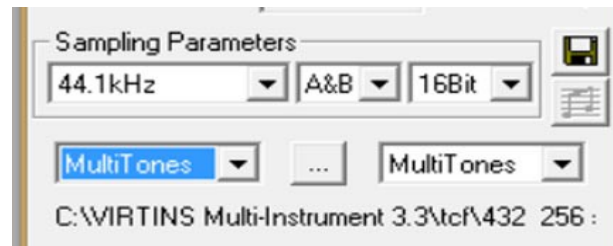
healing.

Although sine wave is almost never used by users of magnetic pulsers, I have run the Rodin coil solely on sine wave and had excellent results that you can read in the My Healing Experiences with the Rodin Coil chapter.

Now you will see the MultiTones selected, and underneath is the path to your saved file. The only other thing you need to do is to go the second box under Sampled Parameters, and select A&B. This means that the program will activate both channels. Then click the red Start arrow at the top right of the window, and the program is running. You can actually hear the sounds coming from the Rodin coil, as the Rodin coil also functions as a speaker but without the diaphragm, and magnet inside. One can hold a magnet in the center of the coil, and the sound will be amplified, but that is not necessary. You will also feel the magnet vibrate.



Next time, when you bring up the program, bring up MultiTones, and then click on load to bring up your preset file, and Close the window. Remember to also set The A&B selection.



The Vortex-based Mathematics

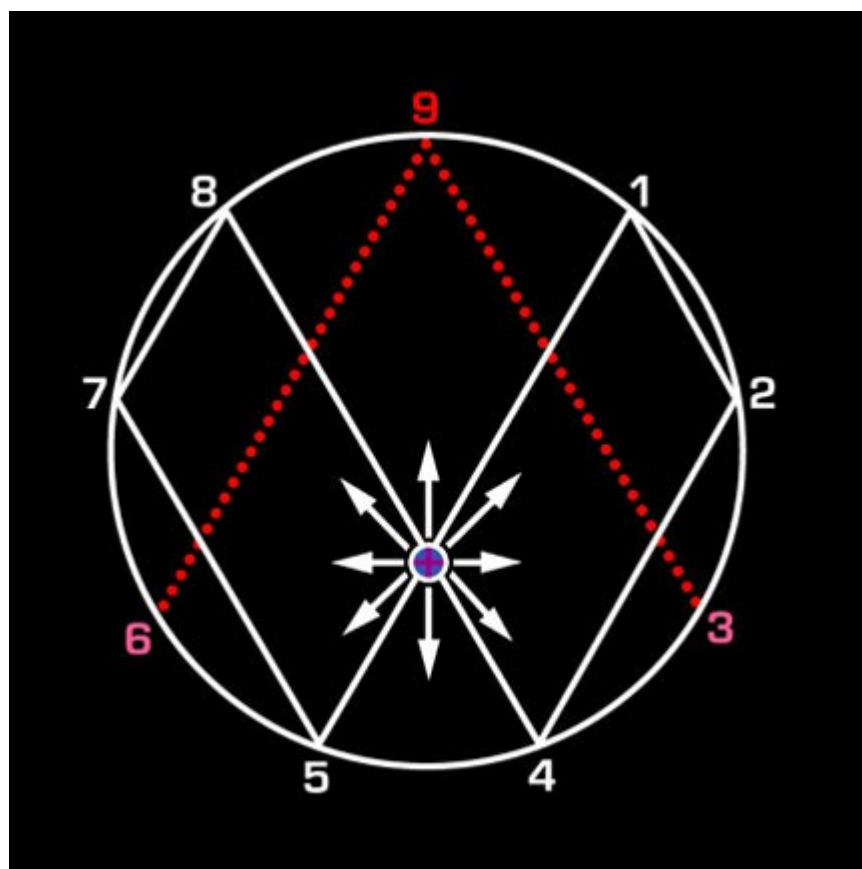
The following is an introduction to Marko Rodin's Vortex-based Mathematics. I kept it fairly simple so anyone can understand it. This overview is intended to give a basis for understanding on what the Rodin coil is based on.

Marko Rodin developed a special mathematics based on numbers that he then overlaid on a torus, resulting in interesting patterns. He also tied it directly to the source of all energy in the cosmos, and the way life energy naturally flows.

But the mathematics came first. When a friend of his suggested to make an electronic coil based on this design, the spirally wound toroidal coil arose which could be hooked up to a power supply and frequency generators. Then they discovered that this coil had some remarkable properties.

Marko Rodin came up with an interesting mathematics, essentially simple, but with profound implications. He calls it Vortex-based Mathematics, as he has laid his numerical system on the surface of a torus, showing how energy in nature, or the cosmos, wants to flow freely, and creating an energy vortex in the process.

The basis of the Vortex-based Mathematics is the following circle with the nine numbers of our decimal system.



We are going to double the numbers starting at number 1. $1 + 1 = 2$. We draw a line from 1 to 2. $2 + 2 = 4$. We draw a line from 2 to 4. $4 + 4 = 8$. We draw a line from 4 to 8. $8 + 8 = 16$; now we add up these numbers: $1 + 16 = 17$. We draw a line from 8 to 7. $7 + 7 = 14$; $1 + 14 = 15$. We draw a line from 7 to 5. $5 + 5 = 10$; $1 + 10 = 11$. We draw a line from 5 to 1.

We have arrived at where we started. In the process we have described a infinity symbol, be it with some corners : ∞ . The white lines we have drawn is a cyclic energy flow from left to right, and from right to left.

Marko Rodin tells us that our base-ten decimal system is not man made, rather it is created by this flow of energy. Numbers are not mathematical inventions but real energies.

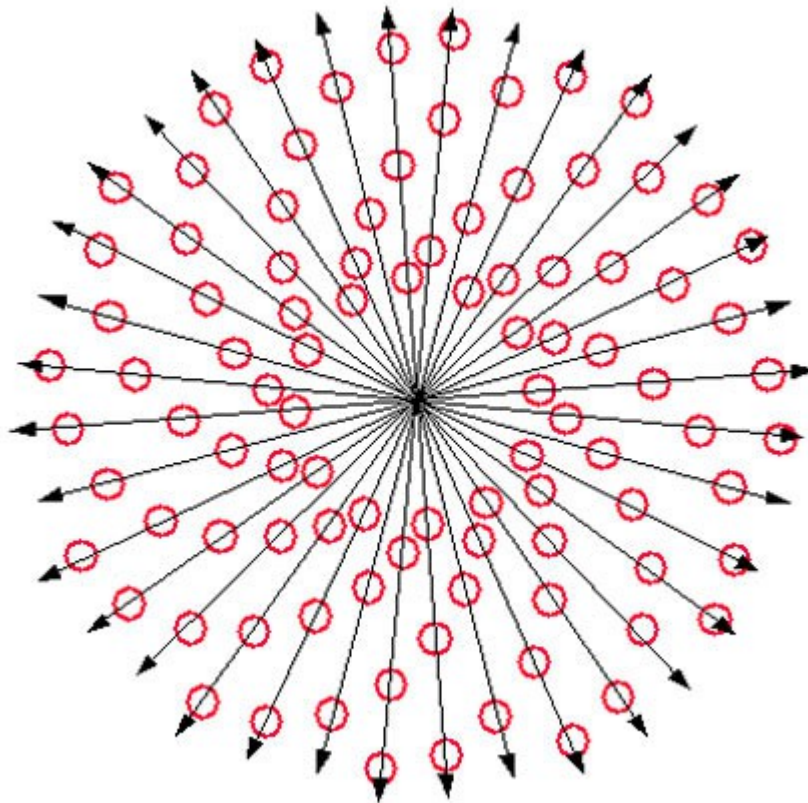
The numbers 1,2,4,8,7,5 relate to the third dimension. The 3 and 6 relate to the fourth dimension and is a higher dimensional oscillating field. The nine is the controller of the 3 and 6. Together they form a trinity, which is the basis of the field. The 3 and 6 form the duality of forces, like Yin/Yang. The duality is only apparent, because in reality it is always a trinity.

The oscillation between 3 and 6 also comes from doubling the numbers: $3 + 3 = 6$; and $6 + 6 = 12$; $1 + 2 = 3$.

The number 9 is the only number that never changes. $9 + 9 = 18$; $1 + 8 = 9$. $18 + 18 = 36$; $3 + 6 = 9$, etc. Rodin equates 9 with Spirit. It is the singularity or the Primal Point of Unity. it is emanating in a straight line from the center of mass out

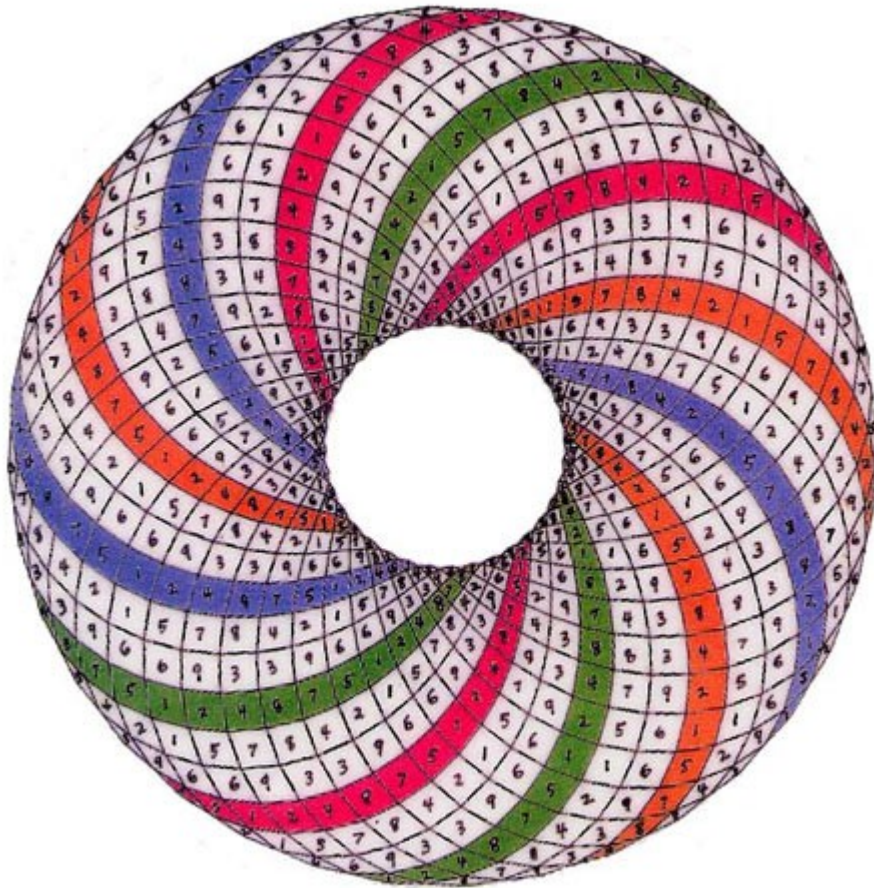
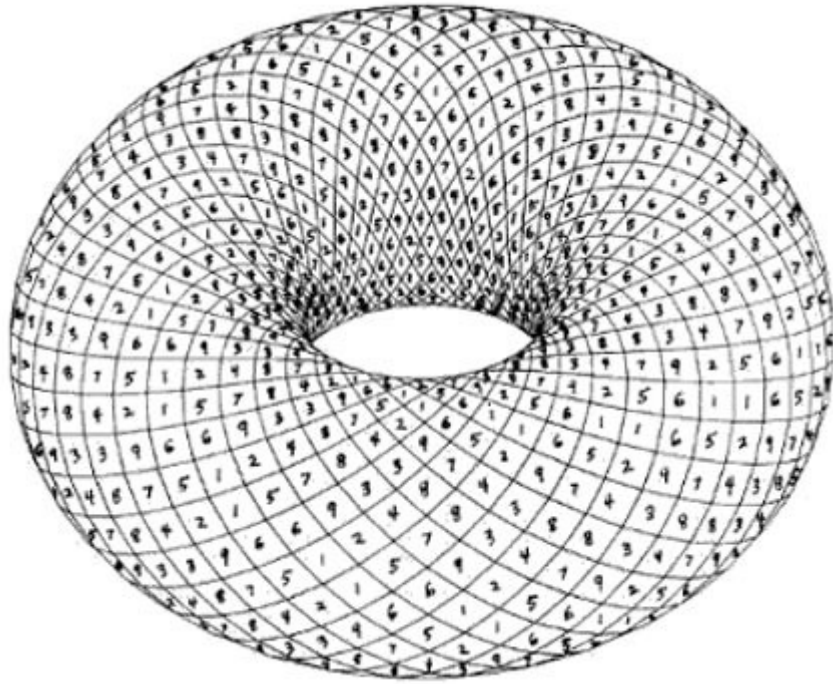
of the nucleus of every atom, and from out of the singularity of a black hole. It is complete, revealing perfection, and has no parity because it always equals itself.

From the center of the infinity symbol (the purple dot with the arrows emanating from it in the image above) linear emanations of energy arise. It is the Spirit who sends out these linear emanations of energy from the center of mass outwards. They move in straight lines. In Rodin's words, these are Aetherons emanations who move radially outwards in spherical directions from the center. Basically this is life-energy.

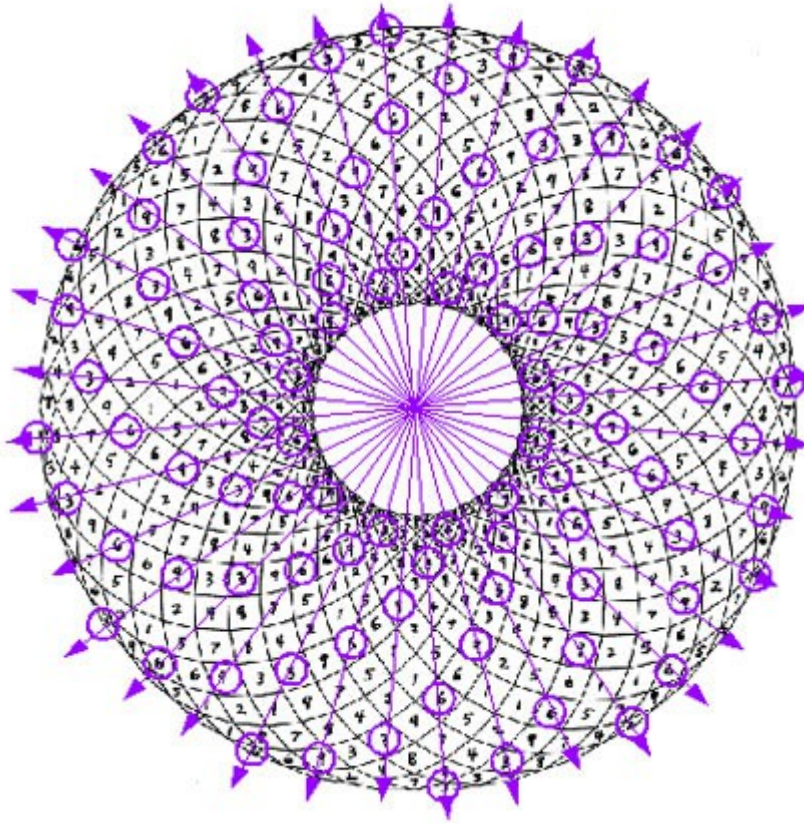


Marko Rodin: "The Aetheron Emanations trigger cell regeneration. Aetheron flow is the source of all movement. All mass warps around the Aetherons. All movement curves around the aetheron flow."

Rodin placed the doubling sequence in a grid map, and folded it onto a torus, creating a certain symmetry of the numbers in a spiral way, similar to a sunflower.



The Aetherons flow out from the center in straight lines, in all directions:



Coil Specifics of the Rodin Coil

The Rodin coil is an application of the Vortex-based Mathematics. The Rodin Coil is a toroidal, or doughnut-shaped, form wound by wires in a pattern consistent with the number patterns discovered by Marko Rodin. He claims that the number patterns represent the natural flow of energy, and therefore winds along these natural flow lines. Toroidal shapes wound with wires are commonly used for inductors in electrical circuits, often for use in transformers. However the pattern of winding in a Rodin Coil is radically different from conventional toroidal coils.

From *Analysis of the Rodin Coil and it's Applications* by Russ Blake:

"The Rodin Coil The Rodin Coil is a toroidal—or doughnut-shaped—form wound by wires in a pattern consistent with the number patterns discovered by Mr. Rodin. Toroidal shapes wound with wires are commonly used for inductors in electrical circuits, often for use in transformers. However the pattern of winding in a Rodin Coil is radically different from conventional toroidal coils. Experimenters have produced some samples of the Rodin Coil to measure the effects of this new approach to winding wires around a torus. To understand these effects it is necessary to review just a little electrical theory. When a current is passing through a wire it creates a magnetic field a round the wire. When a wire is coiled

like a cylindrical spring, as though wrapped around a pencil, the magnetic fields from the turns of the coil reinforce each other to increase the strength of the magnetic field. When the coil is bent into a circle, so that the ends meet, the majority of the magnetic force is concentrated inside the coil. This is considered a benefit in electrical circuit design, since stray magnetic fields can upset the operation of other parts of the circuit. In a conventional coil the windings lay one after another just like the windings of a cylindrical spring. In a Rodin Coil, the windings lie on the surface of the torus, but do not lie consecutively adjacent to each other. Instead they reach along the surface, through the central, doughnut hole area, and 30 degrees short of directly across the torus. This forms, in addition to the wires on the outer surface, a crisscrossing circle of wires in the center of the torus. (The central figure formed by the wires in the doughnut hole is really a polygon of 24 sides for each completed wrap of the coil: so many sides it is considered a circle.) Due to the central circle of wires in a Rodin Torus, it naturally creates a greatly increased magnetic field in the center of the torus, when compared to a conventional coil wound with the same amount of wire. In addition the field generated is much more coherent, in the sense of being much more sensitive to a particular frequency of applied current. These properties are the basis for useful applications of the Rodin Coil, as well as for any limitations in its use. All this having been said, it is worth noting that no one has as yet created a coil precisely conforming to Mr. Rodin's exacting recommendations, all of which derive from the numerical patterns he has discovered in the decimal number system. The effects of a really well constructed Rodin Coil remain untested."



The two windings of the Rodin coil lie next to each other, in parallel. Rodin calls this 'bifilar', but this is different than the commonly understood bifilar windings. The current is run opposite in the two wires. The 'bifilar' windings are crucial because Rodin says that this results in a shear between the adjacent currents, creating a complex overall magnetic field. Rodin says that a third, invisible current of energy flows in the space gap between the windings (the empty space between the coils where theoretically a third winding could be laid.) As Rodin doesn't talk much at all, this are the only references I found in his words:

- "This natural electrical insulating shear is created by the harmonic phasing

activation sequence of the electricity."

- "The harmonic shear which, in the Rodin Coil, turns into an electrical shear and allows for two electrical conducting wires to be touching each other side by side without shorting out regardless of the total amount of energy output. In a Rodin Coil, no insulation is ever needed to protect it from short-circuiting."
- "The pulsed direct-current electricity flows in the opposite directions in the two conductors. There is an equal-in-width non-conducting major groove gap space in between the two conductors. Thus the coil is really comprised of three parts, even though one is left empty. There is a critically important occurring phase-shift in this empty space..."

Another description of the windings from [*Rodin Coil Design*](#) By Bill Ramsay:

"In the Rodin design two equal coils are wound in the same direction of rotation with each wrap (12 wraps per turn) passing through the center to connect with its 150° separated neighbors. This results in 12 wraps: semi-loops; with as many crossover wires for each of the two equal turns. These center crossover wires form a distinctive pattern Rodin calls "the magic circle." The two equal windings are shifted 10° from each other."

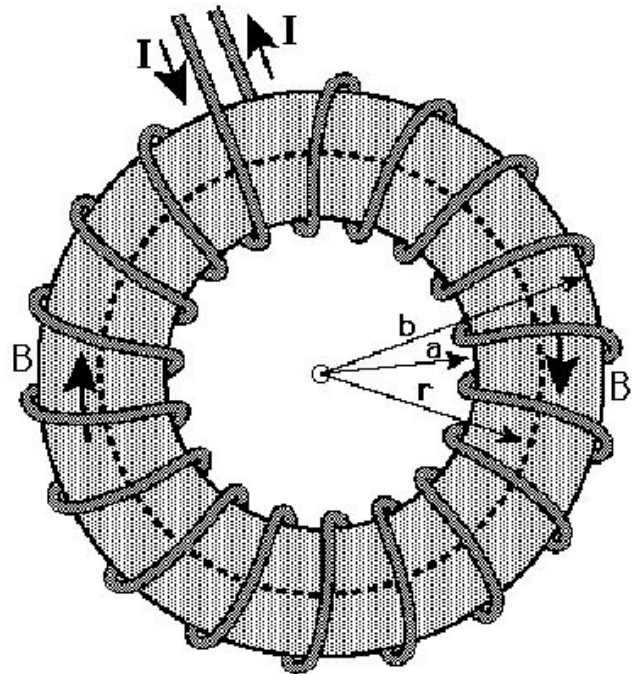
He also states, by his own experiments; "There are two apparent distinctive fields oriented a precise ninety degrees from each other however it is uncertain whether or not there is a distinctive boundary between the expression of these fields or whether there is a linear rotation from one to the other which certainly would create a vortexial spin as predicted by Marko's mathematics." (the fields he is talking about are magnetic fields)

The coil can be fed with DC or AC, and the frequency can be pulsed too. There many ways to apply the current, and there is a lot of experimenting going on.

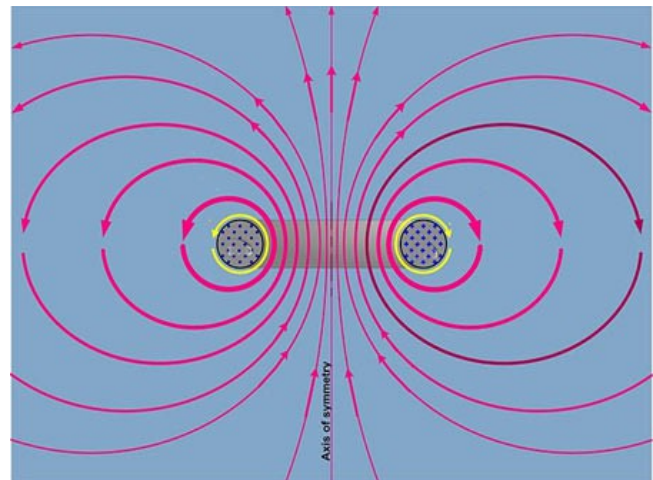
The Magnetic Field

The Rodin coil is a variant of a toroidal coil. We will first have a look at a conventional toroidal coil.

An electric coil wound around a doughnut shaped ring is used in electronics to limit its outside magnetic field which can disrupt other electronic component. The (single) winding wraps around the ring, laying each winding next to the following one. In the picture the letter I is the current, the letter B is the magnetic field inside the ring. The ring is a ferrite ring that concentrates most of the field inside of it, but the magnetic field is also present around the ring, but is very weak. That is why toroidal coils are used in electronic circuits to avoid magnetic disturbance in other parts of the circuit.

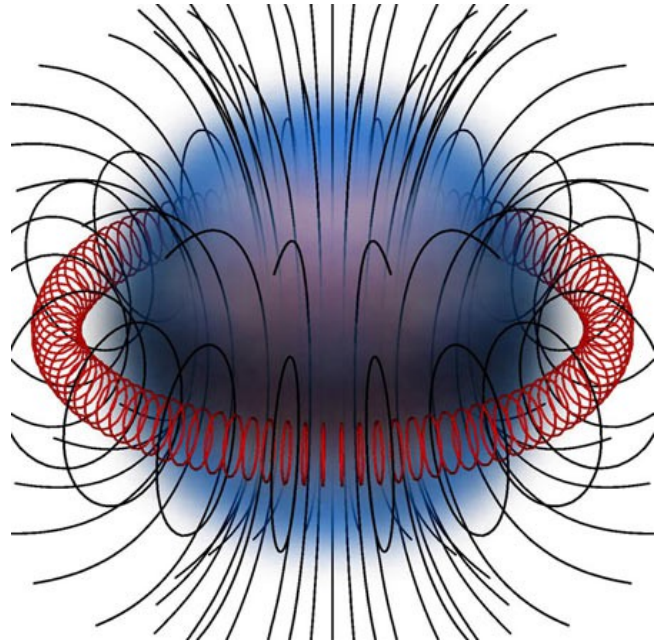


The following image shows the magnetic field of a doughnut shaped toroidal inductor or transformer. are electronic components, typically consisting of a circular ring-shaped magnetic core of iron powder, ferrite, or other material around which wire is coiled to make an inductor. Toroidal coils are used in a broad range of applications, such as high-frequency coils and transformers.



This gives you an idea of the shape of the magnetic field of a toroidal coil.

The following image gives you a 3-D perspective:

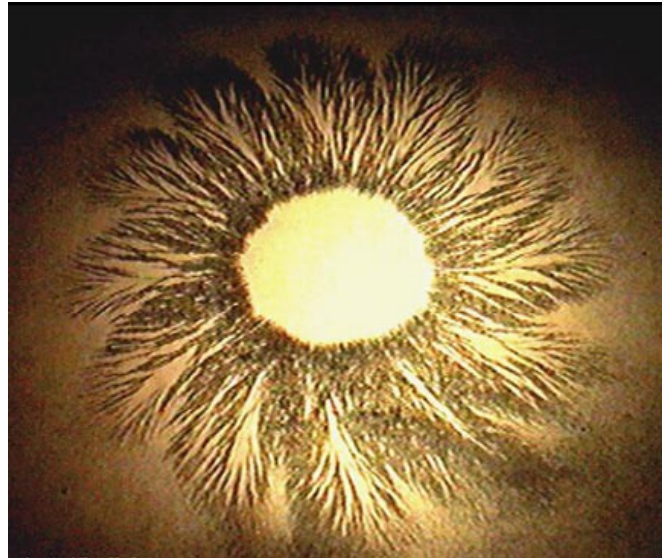


With the Rodin coil, there are two wires, coiling around the torus form every 150° , for 12 turn, then repeating this winding usually for 18 times. It is not clear how the magnetic field differs from that of a conventional toroidal coil. We also have two windings separated from other for 10° . And, the current is opposite in the two wires, creating two opposing, but also 10° shifted magnetic fields.



[This website](#) shows a picture (on the right) of a twisted magnetic field when the coil was fed with DC current. he sprinkled iron filings on a surface above the coil.

My coil is hooked up to an audio amplifier, and when I sprinkled iron filings on a plate above the coil, they didn't move an inch, as if no magnetic field was present. This is due to the AC current which flips the magnetic field 60 times a second.



The coil I am using is fed with AC current. The two magnetic fields of the two windings are static, so I don't expect them to rotate, as it is sometimes claimed. One field is shifted 10° from the other, and this might explain the spiral arm seen in the picture above.

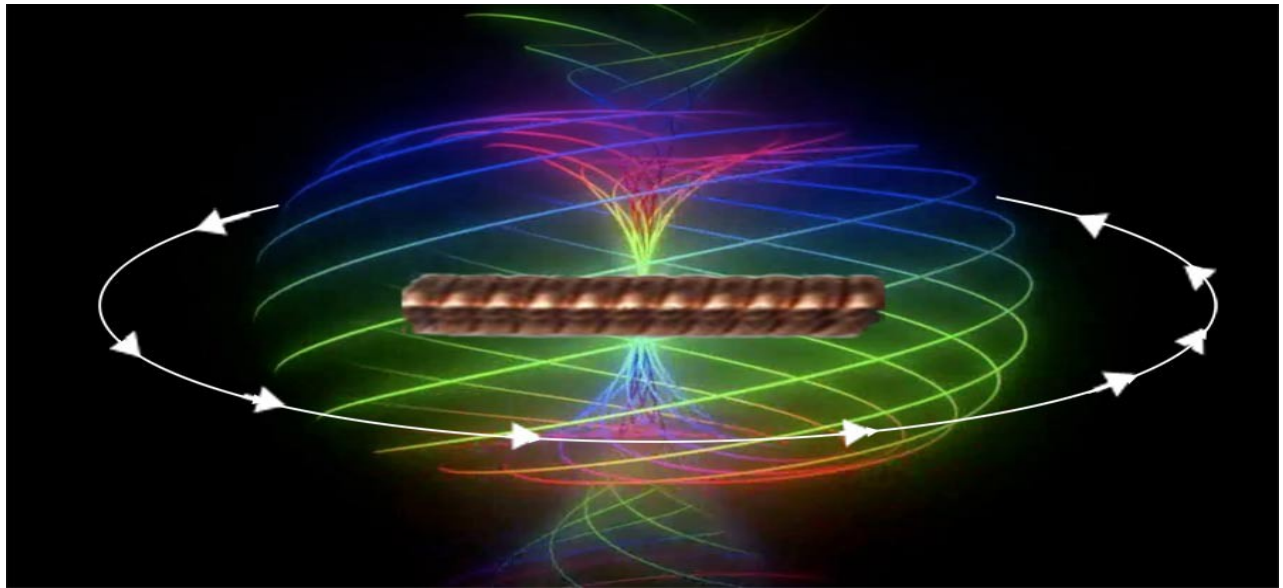
With AC polarity of the magnetic fields changes 60 times a second, but there is still no rotating magnetic field.

It is claimed that canceling magnetic fields in bifilar windings creates an aether scalar field. Definitions of 'scalar' vary, but the idea is that the (canceled) magnetic energy is conserved and transformed into a more subtle, more energetically charged energy, often referred to as 'aether'.

So, I had a friend come over who is very energy sensitive. I had not told her anything about the coil. She had never seen it before, nor knew anything about it. When she was feeling the subtle energy around the coil, she described the energy around the coil as rotating counterclockwise (as seen from above). Then she found that it also has a spiraling vortex from the center upwards and downwards.

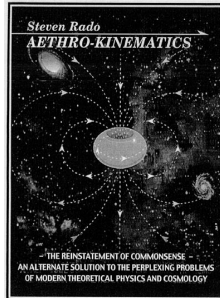
The image below is an artistically enhanced image to give you an idea what she felt, seen from the side of the coil, which is in the middle.

I found this interesting because I had measured the magnetic field of my Rodin coil a couple weeks before and had come to the same shape of field. Although the magnetic field is in my opinion static, it mimics the same shape as the aether field found by my friend.



Appendix

Extract from AETHRO-KINEMATICS, by Steven Rado, 1994; page 196-200



...With this in mind, consider the illustrations of Figure 11-1, showing a kinematically natural chain of events, triggered by the least possible local disturbance in the isotropy of the medium which eventually could evolve into a locally organized, permanent and autonomous circulatory system of a three-dimensional donut-vortex.

(a) As Figure 11-1(a) shows, any relative motion between two layers of an isotropic medium can generate local turbulence. The different speeds of the layers shown at the left are equivalent with the opposing relative velocities shown at the right side. (b) Under suitable circumstances this relative motion can act as a torque and induce rotational motion. This form of disturbance is called vorticity and it is quite common in moving fluids, especially within the fluid of a large scale vortex, where, due to its differential rotation, each layer of the medium represents a different angular velocity. (c) While the torque of the relative motion of the layers acts continuously, a centrifugal tendency of rotation comes into existence. This is simply the nature of motion, that each particle tends to move on a straight path and therefore tends to get out of a circular one. This centrifugal tendency opens up the center of the beginning vortex and creates a local rarefaction in the middle, which then gradually develops into a sink. It follows,

that both from the top and bottom of the plane of the vortex, the fluid starts drifting toward the rarefied area of the sink. Let us now assume, that by chance, the flow from the top has a slight advantage and the two drifts of opposite directions collide somewhat below the plane of the vortex. As a result, the top flow pushes the bottom sideways and a vertical flow of the medium develops through the vortex ring.

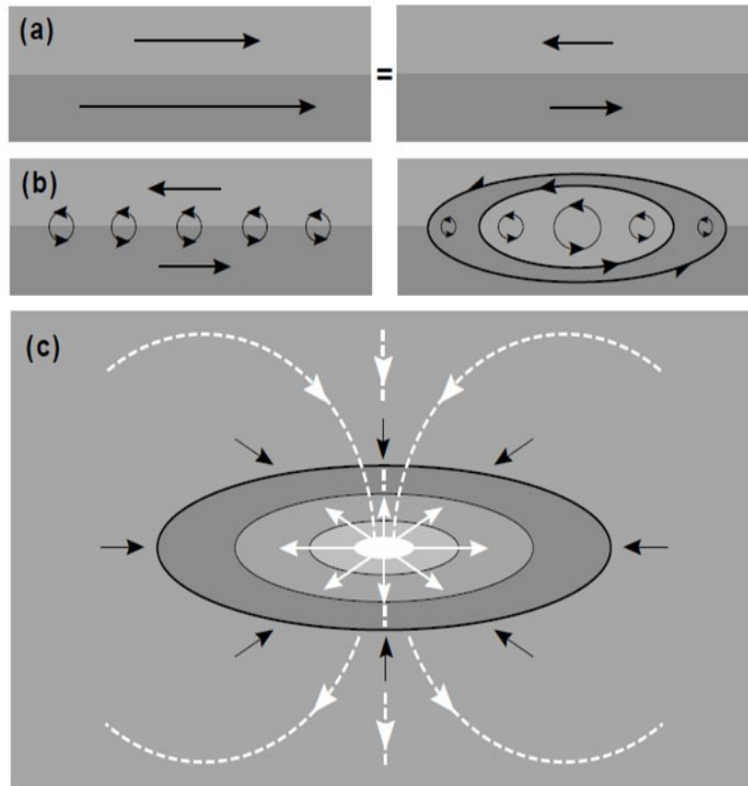


Figure 11-1 (a),(b),(c).

The result is a rarefaction at the top and a compression on the bottom, which now represents a source. But since in an isotropic medium all disturbances are propagated in expanding spheres, the rarefaction and compression will eventually curve toward each other. As the sink pulls in and the source pushes out the medium, the drifting Aethrons form a multitude of streams through the center of the vortex, which ultimately re-enter into themselves into an endless loop in the surrounding space.

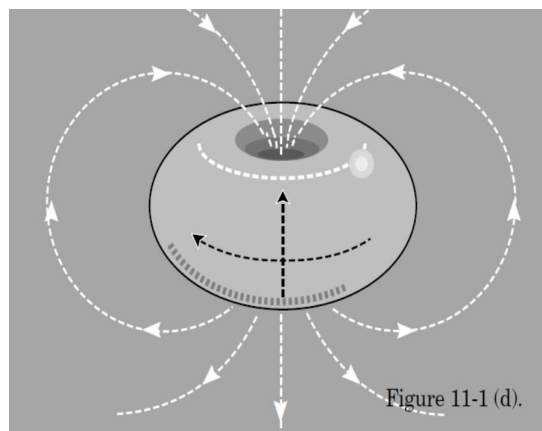


Figure 11-1 (d).

Figure 11-1 (d) shows the resulting three dimensional donut-shape, rotating and spinning vortex, surrounded and penetrated by endless loops of drifting fluid. In this donut-vortex a certain volume of Aether, an immense number of individual Aethrons, are organized into a complex circulatory system, which, upon reaching the kinematic balance with the isotropic external pressure of the medium, gains permanency both in shape and in substance. Being self-sustaining and autonomous, it also represents a fixed quantity of aggregated kinetic energy.

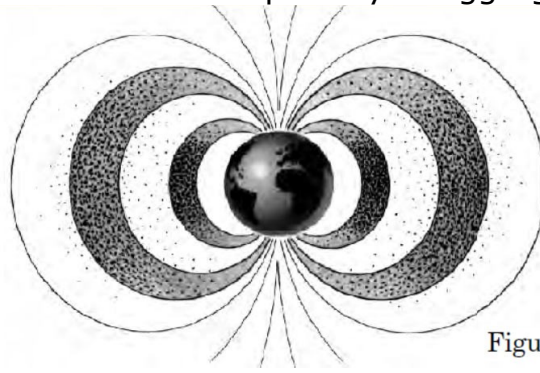


Figure 11-2.

The Earth's magnetic field shows that the flow pattern of the Donut vortex is not totally unfamiliar.

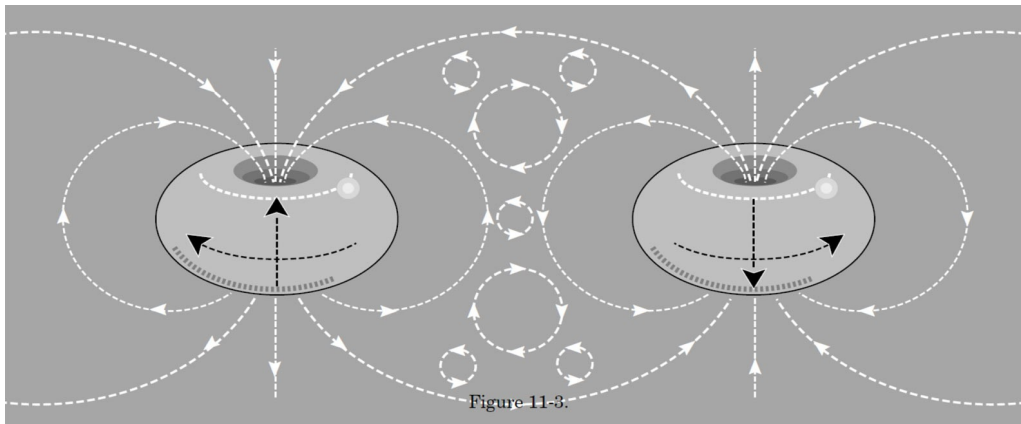


Figure 11-3.

Illustration 11-3 depicts the potential dynamic coupling between two donut-vortices, oriented in such way that their flow-patterns form an interacting, permanent connection. The new flow pattern of this couple is equivalent to a linear dipole flow. It is now easy to imagine that all kinds of further couplings are possible. For instance, a larger kinematic organism might be formed out of a whole row of such donuts and by the connection of the right side of the last member to the left side of the first in a permanent ring. By a more complex interlocking flow-pattern in three dimensions, horizontally oriented donuts can be inserted between vertical ones. In all cases, eventually a kinematic equilibrium is reached between the sinks and sources, the external static pressure and the internal elastic cushion of the medium. The size of the loops stabilizes and by that maintains a constant distance between the donutvortices. Evidently, the continuous re-generation of the same flow-patterns in the frictionless environment of the Aether, the conservation of the shape and substance of the systems and their inherent ability to connect with one another implies that the donutvortex could represent a potential kinematical description of a permanent

elementary building block of matter. Once again it is emphasized, that none of these ideas claim finality, but rather planned to be the germs of a complete description, which will probably be achieved through elaborate sculpturing. For instance, an electron can be a single donut-vortex or similar circulatory pattern, but it can also be a conglomerate of many of them, depending on the requirement of the complex characteristics of an elementary negatively charged particle. The big potential of the donut-vortices is in their connectability and that each unit has its own intake and output. Organized communities of these vortices can be designed, connected in such ways, that the total intake of the system is received from one definite direction, while the output is dispersed in many directions isotropically. Or vice versa; the intake is isotropic and the output is directional. Or both intake and output are directional or both isotropic. There might be ways in this line of designing to achieve the characteristics of negative, positive and neutral elementary particles. Most likely, this will be achieved by computer simulation based on the kinematical algorithm of an ideal gas. The same concept also renders an elementary kinematic pattern for electromagnetic interactions and illustrates the basic kinematic characters of both electric and magnetic force fields; unlike the onedirectional drift of the gravitational field toward a single sink (monopole); electric and magnetic fields always result from a sink and source couple, called dipole, which are surrounded by a complex circulatory system contained in endless elastic loops.

It can be seen now, that with sufficient brainpower and research time, especially with the aid of today's computer generated design, this concept might be extended to simulate all the various electromagnetic forces, giving a conceivable kinematical description of the origin and maintenance of the elementary particles and those of the macrocosmic conglomerates of ponderable matter.