



LINEVILLE, AL
396-5663

Cost Plus 10%

WEDOWEE, AL
357-2333

Everything Priced at Cost, Then Only
10% Added At Register.

We reserve the right to limit quantities sold and
to correct printing errors. None sold to dealers.

Find us on the web at perrylandfoods.com

Prices Effective Tuesday, November 19 thru Sunday, December 1, 2019.
Quantity Rights Reserved. None Sold To Dealers. We Reserve The Right To Correct Printing Errors.

10-16 Lbs.
Average
Basted

Honeysuckle Turkeys

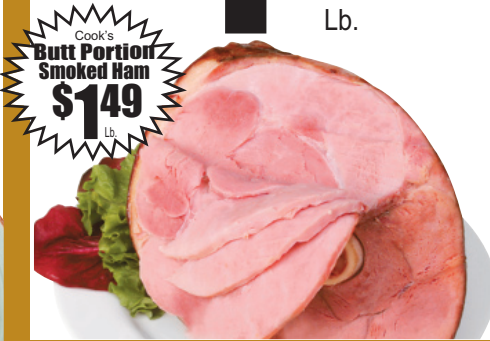
98¢

Lb.

Blackwell Angus
**Select Ribeye
Steak Or Roast**
\$6.88
Lb.



**Cook's Shank Portion
Smoked Ham**
\$1.29
Lb.



**USDA
Baking Hens**
79¢
Lb.



**14.5-15 Oz.
Libby's Vegetables**
59¢
Each



**USA Sleeved
Crisp Celery**
82¢
Stalk



**8-Lb. Russet
Potatoes**
\$2.32
Each



**USA Sweet
Potatoes**
56¢
Lb.



**Bell
Peppers**
2\$1
For



**Sweet
Onions**
65¢
Lb.



Sugar Tree
**Spiral Sliced
Half Ham**
\$13.66
Lb.



USDA 3-Slabs Per Pack Small
**Fresh Pork
Spareribs**
\$1.69
Lb.



USDA Basted
**Turkey
Breast**
\$1.19
Lb.



USDA 10-Lb. Bag
**Fresh Fryer
Leg Quarters**
39¢
Lb.



14-Oz.
**Carolina Pride
Cocktail Smokies**.....Ea. **\$1.64**

5-Lb. Bag Aunt Bessie's
**Hand Cleaned
Chitterlings**.....Ea. **\$9.79**

Assorted Qtr. Sliced
**Kentucky Legend
Boneless Ham**.....Lb. **\$3.56**

Assorted Qtr. Sliced
**Kentucky Legend
Boneless Turkey Breast**.....Lb. **\$4.17**

12-Oz. Reg. Or Thick
**Bryan Sliced
Bacon**.....Ea. **\$2.79**

1-Lb. Roll Mild Or Hot
**Tennessee Pride
Pork Sausage**.....Ea. **\$2.59**

1-Lb.
**Jumbo Or Bun Length
Bar-S Franks**.....Ea. **82¢**

1-Lb. Reg. Or Thick
**Bar-S Sliced
Bologna**.....Ea. **93¢**

10-12 Oz.
**Bar-S Ham Or
Turkey**.....Ea. **\$1.52**

Assorted 10-16 Oz. Premium
**Land O Frost
Lunch Meats**.....Ea. **\$3.09**

16-Ct. Frozen
**Kelley's
Biscuits**.....Ea. **\$3.26**



**12-Pack / 12-Oz. Cans
Coca Cola Products**
4\$12
For

**2-Liter Bottles
Coca Cola Products**
99¢
Each



**5-Lb. Bag
White Lily Corn Meal**
\$1.89
Each



**1/2-Gallon Assorted
Blue Bell Ice Cream**
\$4.95
Each



5-Lb. Bags Assorted
**White Lily
Flour**
\$2.19
Each



1-Lb. Box 10-X Or Light Or Dark Brown
**Domino
Sugar**
79¢
Each

Assorted 15.25-Oz.
**Duncan Hines
Cake Mix**
\$1.00
Each



Assorted 14-16 Oz.
**Duncan Hines
Frosting**
\$1.28
Each



26.8-Oz. Master Blend Or 30.6-Oz. Original
**Maxwell House
Coffee**
\$5.89
Each

4-Lb. Bag Granulated
**Domino
Sugar**
\$1.98
Each



29-Oz. Can
**Bruce's
Cut Yams**
\$1.64
Each

Holiday Fixin's

14-15 Oz. Whole Or Jellied
**Ocean Spray
Cranberry Sauce**.....Each **\$1.29**



Assorted 6.5-9.10 Oz.
**Nabisco
Snack Crackers**.....Each **\$1.89**



Assorted 6.5-9.10 Oz.
**Nabisco
Ritz Crackers**.....Each **\$1.89**



14-15 Oz. Whole Or Jellied
**Eagle Brand
Sweetened Condensed Milk**.....Each **\$1.65**



10.5-Oz. Chicken Or Mushrooms
**Shurfine
Cream Soups**.....Each **70¢**



32-Oz. Aseptic Pack Regular Or Less Sodium
**Shurfine
Chicken Broth**.....Each **\$1.02**

2-Ct. Regular Or Deep Dish
**Pet Ritz
Pie Crusts**

\$1.59
Ea.



Assorted 25-36 Oz.
**Edward's
Pies**

\$4.77
Ea.



Assorted 35-37 Oz.
**Mrs. Smith's
Flaky Crust Pies**

\$3.80
Ea.



Assorted 15.77-22.63
**Red Baron
Pizzas**

\$3.38
Ea.



Assorted 10-12 Oz.
**"Southern Classics"
Pictsweet Vegetables**

\$1.12
Ea.



8-Oz. Block Kraft
**Philadelphia
Cream Cheese**
\$1.83
Ea.



Assorted 16-16.3 Oz.
**Pillsbury
Grands! Biscuits**
\$1.35
Ea.



Assorted 8-Ct. Pillsbury
**Crescent Or
Sweet Rolls**
\$1.63
Ea.



16-Oz. Regular Or Light
**Daisy
Sour Cream**
\$1.63
Ea.

