

HOW TO CREATE A PRINT-READY FILE:

PACKAGING

The following instructions are designed to help you create a print-ready file. If after reading them you are still unsure about anything, please download the template, visit the FAQ section of our website, request a professional File Check or contact customer support.

1 FILE FORMAT

Our systems can only process files in PDF format and in 1:1 scale (not password-protected).

2 COLOURS

All files should be sent in CMYK (cyan, magenta, yellow, black), with the Fogra 39 colour profile . Images in RGB or with PANTONE colours will be converted automatically using a standard colour separation profile.

3 RESOLUTION

The optimal resolution for the print files is between 250 and 300 dpi.

4 MARGINS AND BLEED

Download the template for the product you have purchased; the required bleed of 5 mm will already be in place. Leave a minimum of 3 mm between the text and the cut line.

5 FINISHES

If you have chosen the Extra-thick Varnish or Selective Varnish or Gold Coating or Silver Coating options, remember that the artwork for the finish must be entered on the dedicated Finishing layer.

The artwork on the Finishing layer must not contain gradients, halftone screens or transparency, must consist of vector graphics and must use the Finishing colour swatch.

You can make the finishes any shape you like, giving you more creative freedom.

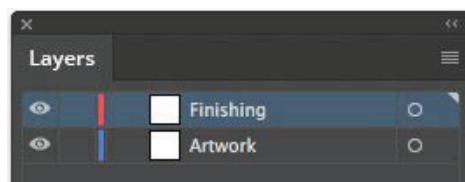
The minimum font size is 10 pt, and the minimum line weight is 1 pt.

We recommend avoiding placing finishes over the scoring, to avoid the varnish or coating breaking.

The template already contains the dedicated tint, named Finishing . Alternatively, follow these steps to recreate the correct colour swatch.

1 LAYERS > CREATE NEW > Finishing

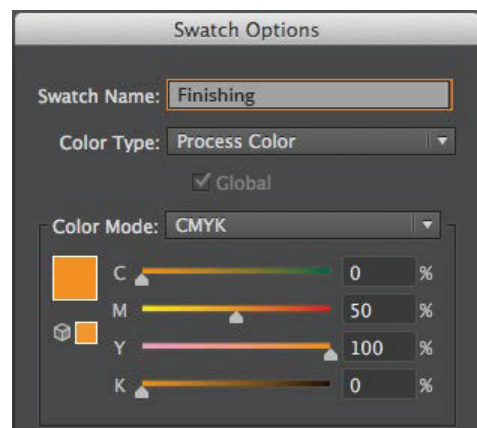
Create a new layer from the Layers panel above the Artwork layer, and name it Finishing.



2 SWATCHES > CREATE NEW > Finishing

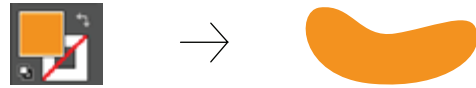
Create a new colour swatch from the Swatches panel and name it Finishing; select Spot Colour as the Colour Type and assign the CMYK percentages 0, 50, 100, 0.

Finishing
Spot Colour
CMYK
C: 0%
M: 50%
Y: 100%
K: 0%

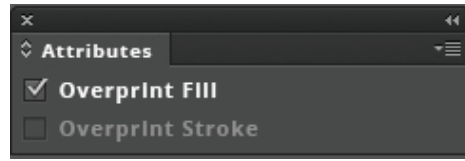


③ FILL > Finishing

Create a vector fill on the Finishing layer which corresponds to the area of the artwork to which you want to add the finish, and assign it the Finishing spot colour.



Overprint must be selected for all paths on the Finishing layer.

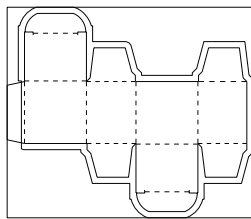


④ Save the PDF, keeping the layers separate.

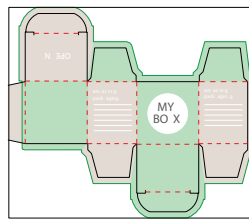
⑥ TEMPLATE

Download the template for your product from the website and use it as the basis for positioning your artwork. You will find the dimensions you gave when ordering, the bleed and other guidelines already correctly set up. Insert your artwork and delete the guidelines and fold and cut lines, leaving only the bleed margin. Finally, save the file as a high-quality PDF without crop marks. If you have selected any other options, follow the instructions given in the following paragraphs.

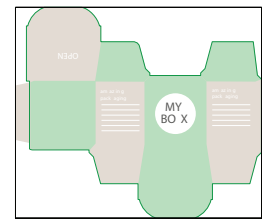
GOOD TO KNOW - Four-colour printing



DOWNLOAD THE TEMPLATE



INSERT YOUR ARTWORK on the Artwork layer



DELETE ALL GUIDELINES except the green line



SAVE THE PDF



PRINTED RESULT



PDF



250-300 dpi



CMYK

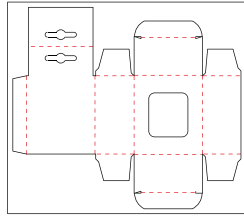


FOGRA 39

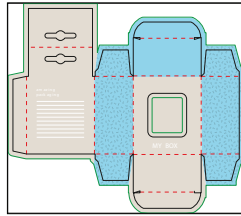
TEMPLATE WITH WINDOW

To create a print-ready file for this option, you must download the dedicated template from the website. The template will contain the area covered by the window and the bleed margin, which you should cover with your artwork to avoid misalignment during cutting.

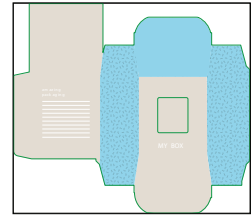
GOOD TO KNOW - Four-colour printing and window



DOWNLOAD
THE TEMPLATE



INSERT YOUR ARTWORK
on the Artwork layer



DELETE ALL GUIDELINES
except the green line



SAVE
THE PDF



PRINTED
RESULT



PDF



250-300 dpi



CMYK

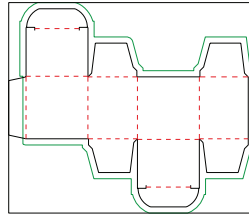


FOGRA 39

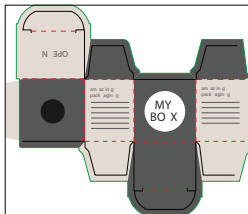
TEMPLATE WITH FINISH

If you have chosen to apply a finish, you will need to use the dedicated template, which can be downloaded from the website. The template will already include the Finishing layer and the Finishing colour swatch. Remember that fills using the Finishing swatch must not contain any transparency (100% opacity). Also, remember that fills using the Finishing swatch must have overprint selected, to avoid gaps in the artwork on the Artwork layer.

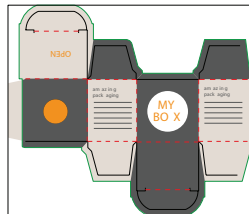
GOOD TO KNOW - Four-colour printing and finish



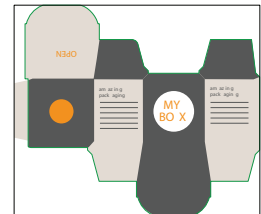
DOWNLOAD THE TEMPLATE



INSERT YOUR ARTWORK
on the Artwork layer



INSERT YOUR ARTWORK
on the Finishing layer



DELETE ALL GUIDELINES
except the green line



SAVE THE PDF



PRINTED RESULT



PDF



250-300 dpi



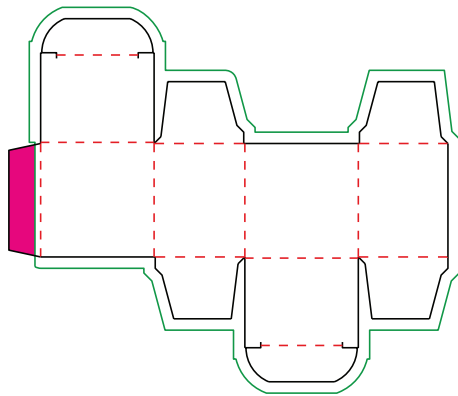
CMYK



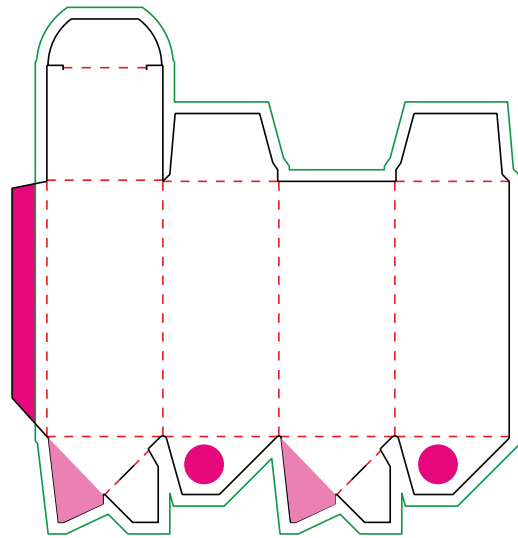
FOGRA 39

GOOD TO KNOW - Glued sections and overlaps

To ensure the best possible adhesion, we recommend not placing artwork on the specific glued sections.



PROMOTIONAL BOX



PROMOTIONAL BOX WITH CRASH LOCK
BASE



Do not alter the scale of the drawing or resize the template.



7 ADDITIONAL INFORMATION

The minimum printable line weight is 0.25 pt.