

# BOROUGH OF HARVEYS LAKE

VOLUME 25

[www.harveyslakepa.us](http://www.harveyslakepa.us)

2018

LUZERNE COUNTY  
 PO Box 60  
 4875 Memorial Hwy, suite 101  
 Harveys Lake, PA 18618  
 (570) 639-2113 Fax (570) 639-3063

**Mayor**  
 Carole Samson  
**Council President**  
 Clarence Hogan  
**Vice-President**  
 Daniel F. Blaine

**Council Members**  
 Chad Flack  
 Michell'e Boice  
 Ed Kelly  
 Thomas Kehler



**2018 Annual Lakefest  
 Dance On the Beach Aug 3  
 &  
 Fine Arts & Crafts Festival  
 August 4 & 5**

Harveys Lake Beach Club Pole 187  
 Pick up brochure at Borough Office in July  
*Sponsored by Harveys Lake Rec. Committee*

**Harveys Lake Community Yard Sale**

**June 22, 23 & 24**

Sign up at the Borough Office to be on the map.  
 The map will be available on May 29  
 Stop by the office to pick one up.

**2018 Harveys Lake Fire Co. Dance  
 Irem Country Club  
 Come and join the fun!**

**Saturday, July 28, 2018  
 7:00PM to 12 Midnight**

**Tom Slick and the Grease Slappers  
 & A.M. Radio**

Donation cost is \$25.00 per ticket includes free beer, soda, pizza  
 and hot dogs.  
*Get tickets by calling: John Martinson 570-690-0310, Joe Nardones 570-829-3603, Ed Kelly 570-639-1398, Fire Dept. at 570- 639-1919 or at the Borough Office*

*No tickets will be sold at the door and all LCB Laws apply  
 A cash bar will be available*

**Environmental Advisory Council announces:**

The Bi-Annual water testing program will be held *Saturday, July 14, 2018.*



This year there are two tiers of testing, priced at \$60 and \$100.

Kits will be available for pick up 10 days prior to July 14.

Call Denise at 570-639-1042 for more info.



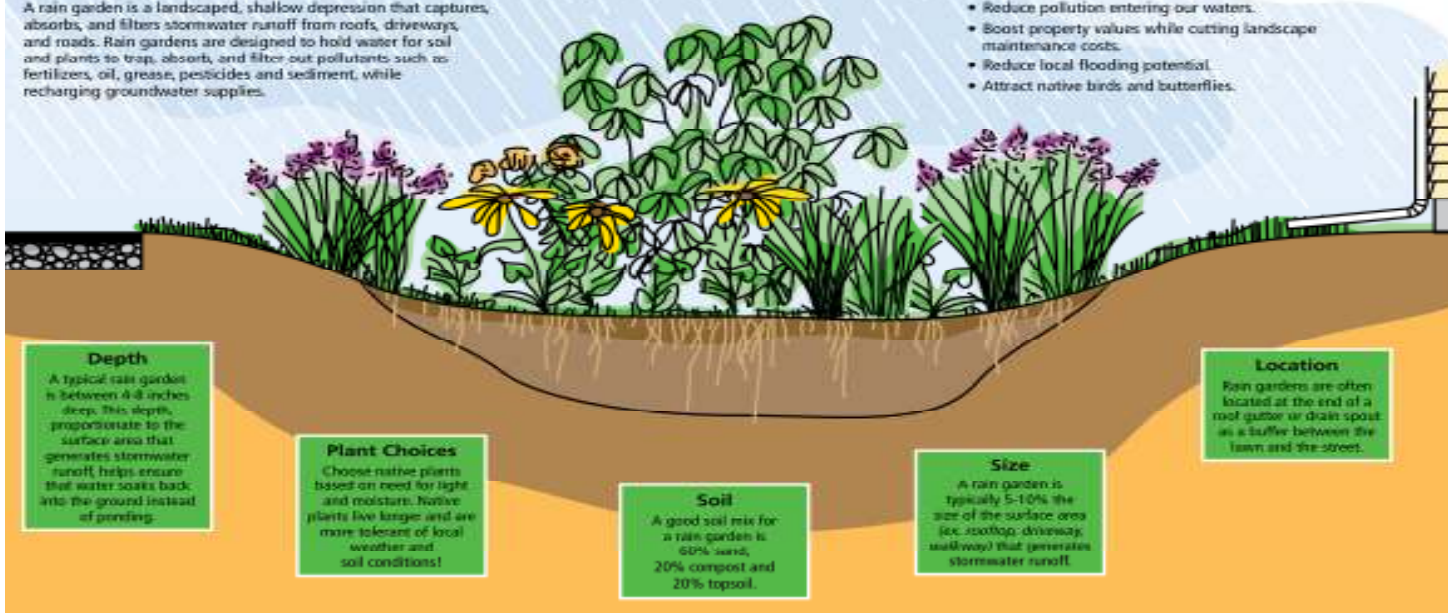
## Rain Gardens Have Many Benefits

**What is a Rain Garden?**

A rain garden is a landscaped, shallow depression that captures, absorbs, and filters stormwater runoff from roofs, driveways, and roads. Rain gardens are designed to hold water for soil and plants to trap, absorb, and filter out pollutants such as fertilizers, oil, grease, pesticides and sediment, while recharging groundwater supplies.

**Rain Gardens Help:**

- Reduce pollution entering our waters.
- Boost property values while cutting landscape maintenance costs.
- Reduce local flooding potential.
- Attract native birds and butterflies.



**Depth**  
 A typical rain garden is between 4-8 inches deep. This depth, proportionate to the surface area that generates stormwater runoff, helps ensure that water soaks back into the ground instead of ponding.

**Plant Choices**  
 Choose native plants based on need for light and moisture. Native plants live longer and are more tolerant of local weather and soil conditions!

**Soil**  
 A good soil mix for a rain garden is 60% sand, 20% compost and 20% topsoil.

**Size**  
 A rain garden is typically 5-10% the size of the surface area (ex. rooftop, driveway, walkway) that generates stormwater runoff.

**Location**  
 Rain gardens are often located at the end of a roof gutter or drain spout as a buffer between the lawn and the street.



# IMPORTANT!!!

Please use your **County Waste** provided cart for trash and recycling

- Be sure to place all waste and recyclables in the specified container for each material.
- Wheel the carts to the end of your driveway prior to 6AM on Monday
- Carts should be placed with at least **3 feet** clearance from mailboxes, poles, lampposts, vehicles and each other cart.
- Please do not put anything you do not wish to be picked up near your carts. For example, lawn chairs, portable basketball hoops, bicycles, etc.



## Yard Waste Composting

### DAMA SITE on SR 118

#### Allowed:

Leaves, grass clippings, garden residue, tree trimmings, chipped shrubbery and other vegetative material, small logs with a diameter less than 12"

#### Not Allowed:

Block, stone, pressure treated wood, construction & demolition debris, painted. Stained or coated wood.

### NO COMMERCIAL HAULERS

Please stop at the SR118 Office and sign-in prior to dropping off material or loading your vehicle. This information is required to monitor and improve the program.

Visit [damaonline.org](http://damaonline.org) for more info and hours of operation



## Save Your Sewers

To prevent damage to your sewer and the environment, the following should

### Never be Flushed!



- Dental floss
- Cotton balls, bandages, plastics
- Condoms, tampons and applicators, sanitary napkins
- Disposable napkins and Handy Wipes
- Razors and blades
- Medicines of any kind
- Syringes and needles

There are many more things that should never EVER be flushed down the toilet. And to send them to their death via the toilet drain is to risk significant sewer problems as well as environmental pollution.