



2024

ALL BREEDS CATALOGUE



2024 ALL BREEDS CATALOGUE

ANGUS

MONTANA **ELEVATION** 7108 6

QUAKER HILL **HIGH COTTON** 9U17 8

PINE VIEW **MOGUL** G241 3

HART **OUTLIER** 7033 7

MOGCK **SPECIALIST** 98 6

LVVF **TANKER** 14 5

KOOJAN HILLS **TRADESMAN** T306 5

RIVERBEND **UPGRADE** 8605 7

PINE VIEW **VEZINA** J166 4

RED ANGUS

DAHLKE **OUTCOME** 016H 8

SIX MILE **MOSSY OAK** 175H 9

RAML **PAYLOAD** 9500 9

CHAROLAIS

KS **LEVEL UP** 13H 10

CHALLAMBI **QANTAS** 12

SCR **TRIUMPH** 2135 10

TRI-N **VAN HALEN** 48H 11

SPARROWS **WHEATON** 101J 11

SIMMENTAL

WHEATLAND **AFFINITY** 8196F 14

ERIXON **ASSET** 91J 13

BILS POL **JAMIE** 31J 15

WOONALLEE **S.K.W.** 12

LLW CARD **TRUE NORTH** G71 13

GLEN ANTHONY **Y-ARTA** AY02 14

LIMOUSIN

BLCC **GRASS ROOTS** 70G 15

POLL HEREFORD

CSC 701 **BOLDER** 901 16

INJEMIRA **WILDFIRE** P021 16

SHORTHORN

MURIDALE **PHANTOM** 10F 17

SPECKLE PARK

KFC **JUDGEMENT CALL** 301J 17


ANDCHRIS **EXTREME** 23E 18

JSF TRADE **SECRET** 11A 18



Quick Facts About Semexx Sexed Semen

state-of-the-art
SORTING HEADS
at Semex Headquarters
OPERATING 24/7

 **SEMEN QUALITY**
is evaluated with cutting-edge technology and equipment

90% PURITY 
for desired gender

 **OFFICIAL SEXING TECHNOLOGY®**
machines, media and protocols are used to produce a high quality product

 highly skilled **TECHNICIANS**




Technicians train
300-900 HOURS
depending on the role


Internal quality program to assure
HIGH QUALITY & FERTILITY

Sexed semen is produced using the proprietary technology of XY LLC and Inguran LLC. January 2024

MOGUL

PINE VIEW MOGUL G241
0200AN10840

KM BROKEN BOW 002
SPRING COVE RENO 4021
SPRING COVE LIZA 021

BALDRIDGE XPAND X743
BALDRIDGE ISABEL C773
BALDRIDGE ISABEL Y69



- Mogul has been well received by breeders since his arrival, with many commenting on how versatile and flexible he can be used in a variety of different programs across Australia
- Now with yearling progeny, he has delivered on his potential with feedback from breeders being extremely positive
- A genuine calving ease to growth curve bender with the added benefit of EMA, CWT, \$A index and outstanding foot EBV's



MOGUL FOOT



MGD - BALDRIDGE ISABEL Y69

MID MAR. 2024	CE DIR %	CE DTRS %	GEST LENGTH (DAYS)	BIRTH WT (KG)	200 DAY WT (KG)	400 DAY WT (KG)	600 DAY WT (KG)	MAT COW WT (KG)	MILK KG	DAYS TO CALVING	SCROTAL SIZE	DOCILITY	NFI-F
EBV	+6.0	+9.9	-3.0	+3.7	+69	+123	+148	+101	+23	-3.2	+1.3	+10	-0.89
ACC	74%	55%	98%	97%	91%	87%	86%	82%	78%	40%	80%	75%	58%
PERC	18	1	72	43	2	2	6	51	10	81	79	87	1

MID MAR. 2024	CARCASE WEIGHT	EYE MUSCLE AREA	RIB FAT	RUMP FAT	RETAIL BEEF YIELD	IMF	CLAW SET	FOOT ANGLE	LEG ANGLE	ANGUS BREEDING INDEX	ANGUS BREEDING LOW FEED COST INDEX
EBV	+85	+12.8	-2.7	-1.2	+0.8	+1.9	+0.48	+0.70	+0.98	\$289	\$461
ACC	78%	74%	72%	70%	64%	77%	71%	71%	59%	-	-
PERC	10	4	94	65	29	58	3	4	33	1	1

Reg# 2233520

BD: 28 January, 2019

Frame: -

BW: 65 lbs

WW: 649 lbs

YW: - lbs

Scrotal: 39 cm



- We look forward to seeing the first progeny of Vezina in early 2024, breeders who have used Vezina are certainly waiting with excitement!
- Vezina was selected on his strength of pedigree, but combines this with calving ease, growth and carcase traits
- Phenotypically Vezina impresses, with outstanding structure, great foot scores, make Vezina one of the best all round options on the market today



Sire - BALDRIDGE SR GOALKEEPER



Dam - MUSGRAVE ROYAL QUEEN 359 as a heifer in 2020

MID MAR. 2024	CE DIR %	CE DTRS %	GEST LENGTH (DAYS)	BIRTH WT (KG)	200 DAY WT (KG)	400 DAY WT (KG)	600 DAY WT (KG)	MAT COW WT (KG)	MILK KG	DAYS TO CALVING	SCROTAL SIZE	DOCILITY	NFI-F
EBV	+6.6	+4.7	-4.4	+3.0	+67	+118	+147	+123	+23	-2.2	+2.4	+32	+0.01
ACC	63%	52%	81%	84%	85%	84%	83%	79%	76%	38%	80%	74%	58%
PERC	14	33	50	28	3	3	7	20	10	92	39	12	27

MID MAR. 2024	CARCASE WEIGHT	EYE MUSCLE AREA	RIB FAT	RUMP FAT	RETAIL BEEF YIELD	IMF	CLAW SET	FOOT ANGLE	LEG ANGLE	ANGUS BREEDING INDEX	ANGUS BREEDING LOW FEED COST INDEX
EBV	+84	+12.0	+0.1	-0.4	+0.4	+2.8	+0.88	+0.92	+0.94	\$252	\$429
ACC	75%	74%	71%	70%	64%	76%	71%	71%	64%	-	-
PERC	11	6	44	51	53	35	58	36	22	7	4

Reg# 20104591

BD: 25 February, 2019

Frame: -

BW: 74 lbs

WW: 744 lbs

YW: 1168 lbs

Scrotal: 39.3 cm

TRADESMAN

KOOJAN HILLS TRADESMAN T306
SBTRADESMAN

SITZ STELLAR 726D
SITZ RESILIENT 10208
SITZ MISS BURGESS 1856
SYDGEN ENHANCE
KOOJAN HILLS R43
KOOJAN HILLS M10



- New for 2024, the search for our Australian bull is over!
- Tradesman is a classy son of Resilient who has impressed many who have inspected him this Autumn
- Tradesman is a curvebender in the truest sense, whilst having the carcass merit to match
- Free moving and sound whilst maintaining himself with the massive workload he has had since arriving at Granite Ridge.
- Tradesman is a must use for those seeking the balance of performance and phenotype

Reg# WKH22T306

BD: 18 APRIL, 2022

Frame: 6.3

BW: 36 kgs

WW: 385 kgs

YW: -

Scrotal: 44 cm



TRADESMAN FOOT

MID MAR. 2024	CE DIR %	CE DTRS %	GEST LENGTH (DAYS)	BIRTH WT (KG)	200 DAY WT (KG)	400 DAY WT (KG)	600 DAY WT (KG)	MAT COW WT (KG)	MILK KG	DAYS TO CALVING	SCROTAL SIZE	DOCILITY	NFI-F
EBV	+7.8	+5.2	-8.2	+2.6	+62	+111	+147	+121	+22	-7.7	+2.3	+25	+0.08
ACC	67%	54%	83%	82%	83%	81%	81%	77%	72%	40%	79%	76%	59%
PERC	7	27	7	21	9	8	7	22	14	4	43	30	35

MID MAR. 2024	CARCASS WEIGHT	EYE MUSCLE AREA	RIB FAT	RUMP FAT	RETAIL BEEF YIELD	IMF	CLAW SET	FOOT ANGLE	LEG ANGLE	ANGUS BREEDING INDEX	ANGUS BREEDING LOW FEED COST INDEX
EBV	+83	+11.9	+1.6	+0.5	+0.4	+2.0	+0.70	+0.96	+0.92	\$280	\$474
ACC	70%	69%	69%	69%	61%	74%	70%	70%	63%	-	-
PERC	12	6	16	34	53	56	21	46	18	1	1

TANKER

LVVF TANKER
0200AN10804

KM BROKEN BOW 002
CASINO BOMBER N33
CASINO ANNIE K48
V A R LEGEND 5019
LVVF LEGEND 842
LVVF BULLSEYE 1154



- Tanker is an extremely impressive phenotype, showing great mass and dimension
- Tanker's birth to growth spread is particularly appealing, which helps that massive carcass weight
- One of the best sires in the Angus breed to improve feet ranking high for Claw, Angle and Leg EBV's
- Semen on Tanker will be limited in the first part of 2024, so if you plan on using Tanker part of 2024, don't hesitate

Reg# 20132190

BD: 7 January, 2021

Frame: -

BW: 84 lbs

WW: 842 lbs

YW: 1592 lbs

Scrotal: 42.5 cm



MID MAR. 2024	CE DIR %	CE DTRS %	GEST LENGTH (DAYS)	BIRTH WT (KG)	200 DAY WT (KG)	400 DAY WT (KG)	600 DAY WT (KG)	MAT COW WT (KG)	MILK KG	DAYS TO CALVING	SCROTAL SIZE	DOCILITY	NFI-F
EBV	+1.4	+1.5	-7.3	+3.9	+82	+139	+170	+145	+17	-2.6	+3.2	+14	+0.00
ACC	63%	51%	84%	85%	85%	83%	83%	79%	77%	39%	79%	71%	58%
PERC	58	67	12	48	1	1	1	5	49	89	17	77	26

MID MAR. 2024	CARCASS WEIGHT	EYE MUSCLE AREA	RIB FAT	RUMP FAT	RETAIL BEEF YIELD	IMF	CLAW SET	FOOT ANGLE	LEG ANGLE	ANGUS BREEDING INDEX	ANGUS BREEDING LOW FEED COST INDEX
EBV	+108	+10.7	-4.0	-7.8	+1.1	+2.3	+0.70	+0.70	+0.84	\$265	\$450
ACC	76%	75%	71%	70%	64%	77%	71%	71%	57%	-	-
PERC	1	10	99	99	16	47	21	4	6	3	2

ELEVATION

MONTANA ELEVATION 7108
0200AN10742

BALDRIDGE XPAND X743
BALDRIDGE COLONEL C251
BALDRIDGE ISABEL Y69

DEER VALLEY ALL IN
MONTANA BLACKCAP C038
RITA 12H9 OF 9067 RITO 5M2



MID MAR. 2024	CE DIR %	CE DTRS %	GEST LENGTH (DAYS)	BIRTH WT (KG)	200 DAY WT (KG)	400 DAY WT (KG)	600 DAY WT (KG)	MAT COW WT (KG)	MILK KG	DAYS TO CALVING	SCROTAL SIZE	DOCILITY	NFI-F
EBV	+1.1	+7.1	-8.4	+4.3	+69	+121	+152	+114	+25	-3.1	+2.5	+35	-0.02
ACC	75%	60%	97%	97%	95%	95%	94%	88%	82%	47%	91%	88%	64%
PERC	61	11	6	57	2	2	4	31	5	82	36	8	25

MID MAR. 2024	CARCASS WEIGHT	EYE MUSCLE AREA	RIB FAT	RUMP FAT	RETAIL BEEF YIELD	IMF	CLAW SET	FOOT ANGLE	LEG ANGLE	ANGUS BREEDING INDEX	ANGUS BREEDING LOW FEED COST INDEX
EBV	+85	+9.7	-1.1	-1.2	+0.2	+2.2	+0.88	+0.78	+0.74	\$252	\$416
ACC	84%	82%	81%	80%	74%	83%	82%	82%	73%	-	-
PERC	10	16	72	65	66	50	58	11	2	7	7

- Elevation continues to leave his mark with bulls selling well again in 2023 and his daughters calving down now are looking very impressive
- Use Elevation to add EMA and carcase weight, along with great Docility and Scrotal size make sure this proven sire gets the essentials done right
- Elevation's classy pedigree reinforces why he is delivering the goods so consistently and now with large number of progeny makes him one of the most reliable choices on the market

Reg# 2075108

BD: 1 July, 2017

Frame: 5.6

BW: 74 lbs

WW: 734 lbs

YW: 1291 lbs

Scrotal: 40 cm



Elevation son: BULL OAK WELL ELEVATION 537
Top price bull \$27,000 at Bull Oak Well Angus Bull Sale



Elevation Progeny: BULL OAK WELL ANGUS

SPECIALIST

MOGCK SPECIALIST 98
0200AN10760

EF COMMANDO 1366
BALDRIDGE 38 SPECIAL
BALDRIDGE ISABEL Y69

STYLES CASH R24
MOGCK RUTH 1686
MOGCK RUTH 264



MID MAR. 2024	CE DIR %	CE DTRS %	GEST LENGTH (DAYS)	BIRTH WT (KG)	200 DAY WT (KG)	400 DAY WT (KG)	600 DAY WT (KG)	MAT COW WT (KG)	MILK KG	DAYS TO CALVING	SCROTAL SIZE	DOCILITY	NFI-F
EBV	+6.4	+4.4	-5.0	+1.3	+62	+99	+126	+74	+20	-6.0	+0.9	+26	+0.01
ACC	73%	58%	93%	93%	88%	87%	86%	83%	79%	43%	83%	75%	61%
PERC	15	36	40	7	10	30	36	88	24	20	88	26	27

MID MAR. 2024	CARCASS WEIGHT	EYE MUSCLE AREA	RIB FAT	RUMP FAT	RETAIL BEEF YIELD	IMF	CLAW SET	FOOT ANGLE	LEG ANGLE	ANGUS BREEDING INDEX	ANGUS BREEDING LOW FEED COST INDEX
EBV	+76	+4.1	+0.3	-0.9	-0.3	+2.0	+0.74	+0.84	+1.00	\$254	\$398
ACC	79%	77%	75%	74%	67%	78%	68%	68%	63%	-	-
PERC	24	77	39	60	87	56	28	19	40	6	15

- Specialist continues his dominance as a go to heifer option, without sacrificing growth and style
- Had a dominating presence in Hamilton Weaner sales, with clients receiving the reward in a true industry marker. Steers into feedlots, heifers back to the paddock as breeders!
- His daughters that have been retained are certainly going to have a positive impact going forward

Reg# 2079512

BD: December 23, 2017

Frame: 5.8

BW: 65 lbs

WW: 839 lbs

YW: 1372 lbs

Scrotal: 40 cm



Sire - BALDRIDGE 38 SPECIAL



PGD - BALDRIDGE ISABEL Y69

OUTLIER

HART OUTLIER 7033
0200AN10109

K C F BENNETT ABSOLUTE
HAYNES OUTRIGHT 452
HAYNES ND 454 MISS 179
E&B BLACKJACK 321
HART LIBERTY BELLE 5315
HART LIBERTY BELLE 2625



MID MAR. 2024	CE DIR %	CE DTRS %	GEST LENGTH (DAYS)	BIRTH WT (KG)	200 DAY WT (KG)	400 DAY WT (KG)	600 DAY WT (KG)	MAT COW WT (KG)	MILK KG	DAYS TO CALVING	SCROTAL SIZE	DOCILITY	NFI-F
EBV	+3.8	+1.3	-5.8	+3.3	+65	+111	+138	+125	+15	-5.3	+3.7	+26	+0.16
ACC	59%	49%	84%	83%	84%	83%	82%	78%	77%	37%	79%	69%	57%
PERC	36	69	28	34	5	7	14	17	63	33	9	26	44

MID MAR. 2024	CARCASS WEIGHT	EYE MUSCLE AREA	RIB FAT	RUMP FAT	RETAIL BEEF YIELD	IMF	CLAW SET	FOOT ANGLE	LEG ANGLE	ANGUS BREEDING INDEX	ANGUS BREEDING LOW FEED COST INDEX
EBV	+82	+2.8	+0.9	+0.8	-0.7	+1.4	+1.08	+0.86	+1.18	\$213	\$388
ACC	75%	74%	70%	68%	62%	76%	69%	69%	56%	-	-
PERC	14	87	27	29	96	72	89	23	88	39	20

- Outlier is a thick, powerful, eye appealing son of Haynes Outright 452, with an outcross pedigree bringing something new to the table
- Admired for his overall mass with moderate birth weight and appealing growth, Outlier is an easy doing sire that will improve carcase weight and fats
- In addition to adding growth, Outlier will improve scrotal size, docility, foot angle and overall appeal

Reg# 2021909

BD: 27 January, 2017

Frame: 6.1

BW: 79 lbs

WW: 829 lbs

YW: 1527 lbs

Scrotal: 43 cm



Sire - HAYNES OUTRIGHT 452



PATERNAL SISTER TO DAM

UPGRADE

RIVERBEND UPGRADE 8605
0200AN10376

V A R DISCOVERY 2240
DIABLO DELUXE 1104
DIABLO ERICA DIANNA 9034
PLATTEMERE WEIGH UP K360
BLACK GOLD RITA 527
GAR/DRMCTR OBJECTIVE 9J86



MID MAR. 2024	CE DIR %	CE DTRS %	GEST LENGTH (DAYS)	BIRTH WT (KG)	200 DAY WT (KG)	400 DAY WT (KG)	600 DAY WT (KG)	MAT COW WT (KG)	MILK KG	DAYS TO CALVING	SCROTAL SIZE	DOCILITY	NFI-F
EBV	-9.1	+3.1	-4.1	+5.5	+78	+141	+172	+174	+12	-1.0	+2.2	+12	+0.35
ACC	72%	57%	95%	93%	91%	90%	89%	85%	79%	45%	85%	83%	62%
PERC	98	51	55	81	1	1	1	1	86	98	47	84	65

MID MAR. 2024	CARCASS WEIGHT	EYE MUSCLE AREA	RIB FAT	RUMP FAT	RETAIL BEEF YIELD	IMF	CLAW SET	FOOT ANGLE	LEG ANGLE	ANGUS BREEDING INDEX	ANGUS BREEDING LOW FEED COST INDEX
EBV	+103	+5.0	-3.8	-7.2	+0.4	+2.9	+0.86	+0.94	+1.06	\$189	\$362
ACC	81%	78%	76%	75%	69%	80%	72%	72%	63%	-	-
PERC	1	66	99	99	53	33	54	41	59	66	40

- First sons will sell in the early 2024, and already creating interest with outstanding structure and performance
- Upgrade will add Power and Quality being consistent in his breeding pattern. One of the highest demand sires globally adding growth, performance, and good IMF in the one package
- The most exciting part of Upgrade might be his daughters; they have some real presence and maternal attributes

Reg# 2163372

BD: 11 October, 2018

Frame: 6.2

BW: 74 lbs

WW: 569 lbs

YW: 1160 lbs

Scrotal: 37 cm



DAM: BLACK GOLD RITA 527



PROGENY AT CLAREMONT ANGUS

HIGH COTTON

QUAKER HILL HIGH COTTON 9U17
0200AN10384



SEXED

K C F BENNETT CONSENT Y75
K C F BENNETT SUMMATION
THOMAS PATRICIA 9705

R B TOUR OF DUTY 177
QUAKER HILL ERICA ELBA 5Y01
QUAKER HILL ERICA ELBA 5J11



MID MAR. 2024	CE DIR %	CE DTRS %	GEST LENGTH (DAYS)	BIRTH WT (KG)	200 DAY WT (KG)	400 DAY WT (KG)	600 DAY WT (KG)	MAT COW WT (KG)	MILK KG	DAYS TO CALVING	SCROTAL SIZE	DOCILITY	NFI-F
EBV	+4.0	-0.5	-3.5	+2.7	+63	+118	+150	+138	+20	-4.7	+1.0	+17	+0.39
ACC	63%	54%	81%	84%	85%	84%	83%	80%	78%	41%	80%	73%	61%
PERC	34	82	65	22	7	3	5	8	27	47	86	66	69

MID MAR. 2024	CARCASS WEIGHT	EYE MUSCLE AREA	RIB FAT	RUMP FAT	RETAIL BEEF YIELD	IMF	CLAW SET	FOOT ANGLE	LEG ANGLE	ANGUS BREEDING INDEX	ANGUS BREEDING LOW FEED COST INDEX
EBV	+89	+9.0	+0.0	+0.4	+0.6	+2.0	+0.74	+0.82	+1.04	\$247	\$430
ACC	76%	75%	72%	71%	65%	78%	70%	70%	53%	-	-
PERC	6	21	46	36	41	56	28	16	53	10	4

- High Cotton is a true safe calving ease bull with high-ranking calving traits along with an actual low birth with of 32kgs
- Will bring top 5% growth for 200, 400 and 600-day weights along with high ranking carcase weight, EMA and positive fats EBV's to complete his all around package
- Impressive phenotype sire showing that extra length and dimension with solid foot EBV's with the added benefit of outcross pedigree makes High Cotton an easy use sire
- Available Sexed Female and Male

Reg# 2194830

BD: 16 September, 2019

Frame: -

BW: 71 lbs

WW: -

YW: -

Scrotal: 39.5 cm



Sire - K C F BENNETT SUMMATION



MGS - R B TOUR OF DUTY 177

OUTCOME

DAHLKE OUTCOME 016H
0200AR20727

COLLIER FINAL PRODUCT B389
COLLIER FINISHED PRODUCT
COLLIER AMY B385

ANDRAS FUSION R236
DAHLKE MS. SANDY 27IC
DAHLKE TRENDY SANDI 127U



RAAA-F23	CE	BW	WW	YW
EPD	19	-6.2	59	104
ACC	0.50	0.54	0.48	0.49
RANK %	3	3	62	41

RAAA-F23	MARB	CW	REA	FAT
EPD	0.39	22	0.17	0.05
ACC	0.40	0.44	0.40	0.37
RANK %	54	53	40	93

RAAA-F23	ADG	DMI	MILK	ME
EPD	0.29	1.47	22	2
ACC	0.49	0.14	0.22	0.15
RANK %	20	48	77	38

RAAA-F23	HPG	CEM	STAY	YG
EPD	12	13	16	0.13
ACC	0.24	0.28	0.33	0.34
RANK %	41	1	45	77

- New to our lineup in 2024
- Breed leading curve-bending sire! Elite calving ease and growth with a fresh outcross pedigree
- Correct made, long bodied and easy fleshing individual with a pleasing and attractive look
- First semen sold out on arrival, be sure to get in early on Outcome for 2024 as he has high demand globally

Reg# 2201271

BD: 28 February, 2020

Frame: -

BW: 73 lbs

WW: 680 lbs

YW: 1315 lbs

Scrotal: 42 cm



Sire - COLLIER FINISHED PRODUCT



MGS - ANDRAS FUSION R236

PAYLOAD

RAML PAYLOAD 9500
0200AR20726



MAR. 2024	CE DIR %	CE DTRS %	GEST LENGTH (DAYS)	BIRTH WT (KG)	200 DAY WT (KG)	400 DAY WT (KG)	600 DAY WT (KG)	MAT COW WT (KG)	MILK KG	DAYS TO CALVING	SCROTAL SIZE	DOCILITY	NFI-F
EBV	-3.8	-	-2.2	+2.0	+38	+59	+78	+76	+12	-	+1.4	-	-
ACC	41%	-	60%	79%	71%	67%	63%	45%	48%	-	30%	-	-
PERC	85	-	20	20	10	10	10	15	40	-	5	-	-

MAR. 2024	CARCASE WEIGHT	EYE MUSCLE AREA	RIB FAT	RUMP FAT	RETAIL BEEF YIELD	IMF
EBV	+53	+5.0	+0.3	-0.1	+1.3	+0.5
ACC	54%	47%	35%	31%	30%	33%
PERC	5	1	15	35	20	20

SLGN WIDELOAD 920W
PELTON WIDELOAD 788
PELTON MISS JAYLA 05085
HXC CONQUEST 4405P
RAML CHEROKEE MAIDEN 500
WDZ SRV FASHION 1135

- Payloads first progeny area making their mark with very good reports back from breeders on his consistency and his ability to breed true to type
- Phenotypic standout! Great Body design being stout featured, smooth, attractive looking with impeccable foot structure and soundness
- Will improve udder quality and backed by cow power stemming from his majestic Conquest dam

Reg# 2141837

BD: 6 January, 2019

Frame: 6.0

BW: 80 lbs

WW: 691 lbs

YW: 1288 lbs

Scrotal: 42 cm



PGD: PELTON MISS JAYLA 0508S



PROGENY AT PUGH FARMS

MOSSY OAK

SIX MILE MOSSY OAK 175H
0200AR20729



MAR. 2024	CE DIR %	CE DTRS %	GEST LENGTH (DAYS)	BIRTH WT (KG)	200 DAY WT (KG)	400 DAY WT (KG)	600 DAY WT (KG)	MAT COW WT (KG)	MILK KG	DAYS TO CALVING	SCROTAL SIZE	DOCILITY	NFI-F
EBV	-0.6	-	-4.4	+3.5	+46	+79	+86	+87	+12	-	+0.6	-	-
ACC	40%	-	62%	79%	72%	70%	66%	49%	60%	-	53%	-	-
PERC	40	-	5	65	1	1	5	5	40	-	85	-	-

MAR. 2024	CARCASE WEIGHT	EYE MUSCLE AREA	RIB FAT	RUMP FAT	RETAIL BEEF YIELD	IMF
EBV	+58	+2.8	-0.2	-0.6	+0.9	-0.1
ACC	62%	46%	43%	36%	32%	49%
PERC	5	10	45	60	40	80

RED U-2 RECKONING 149A
RED SIX MILE JOHN WICK 882E
RED SIX MILE & CO GLORIA 29A
RUST BULL 31B
RED SIX MILE MISS LARK 225E
RED SIX MILE MISS LARK 300C

- Proven calving ease option!
- Mossy Oak's pedigree reads as a who's who from the Six Mile program, combining John Wick and the Miss Lark 225E cow who are all class
- Progeny have been moderate, thick set and easy doing

Reg# 2164370

BD: February 21, 2020

Frame: -

BW: 70 lbs

WW: 893 lbs

YW: -

Scrotal: 37 cm



SIRE: RED SIX MILE JOHN WICK 882E



DAM: RED SIX MILE LARK 225E

LEVEL UP

KS LEVEL UP 13H

0200CH50321

0777 0888 SEXED



FEB. 2024	CE DIR %	CE DTRS %	GEST LENGTH (DAYS)	BIRTH WT (KG)	200 DAY WT (KG)	400 DAY WT (KG)	600 DAY WT (KG)	MAT COW WT (KG)	MILK KG	DAYS TO CALVING	SCROTAL SIZE	DOCILITY	NFI-F
EBV	+7.2	+1.4	-3.9	-1.5	+10	+20	+23	+9	-2	-	+4.0	-	-
ACC	47%	42%	68%	70%	65%	63%	61%	57%	51%	-	62%	-	-
PERC	20	45	25	20	55	60	70	90	99	-	1	-	-

FEB. 2024	CARCASE WEIGHT	EYE MUSCLE AREA	RIB FAT	RUMP FAT	RETAIL BEEF YIELD	IMF
EBV	+17	+0.2	-0.4	-0.7	+0.8	-1.0
ACC	51%	46%	53%	52%	46%	45%
PERC	60	95	80	85	20	99

MXS VERMILLION 527R
MERIT ROUNDUP 9508W
MERIT YOLANDA 7244T

HC YACHTZEE 166Y
VMN DON'T BLINK 20D
VMN WHAT LUCK PLD 937W

- Top level actual performance data combined with high genetic predictions for carcase quality. Homozygous Polled (PP)
- Level Up offers a heavily muscled, deep bodied and structurally sound package backed by a highly maternal productive dam with great udder quality
- Available in Sexed Male and Female semen

Reg# MC798949

BD: 23 January, 2020

Frame: 6.5

BW: 90 lbs

WW: 972 lbs

YW: 1592 lbs

Scrotal: 39 cm



Dam - VMN DON'T BLINK 20D



Sire - MERIT ROUNDUP 9508W

TRIUMPH

SCR TRIUMPH 2135

0200CH50318



FEB. 2024	CE DIR %	CE DTRS %	GEST LENGTH (DAYS)	BIRTH WT (KG)	200 DAY WT (KG)	400 DAY WT (KG)	600 DAY WT (KG)	MAT COW WT (KG)	MILK KG	DAYS TO CALVING	SCROTAL SIZE	DOCILITY	NFI-F
EBV	-5.5	+1.3	-5.2	+0.9	+23	+34	+37	+50	-9	-	+1.7	-	-
ACC	61%	36%	91%	91%	81%	81%	78%	69%	42%	-	77%	-	-
PERC	90	50	15	65	5	15	30	15	99	-	20	-	-

FEB. 2024	CARCASE WEIGHT	EYE MUSCLE AREA	RIB FAT	RUMP FAT	RETAIL BEEF YIELD	IMF
EBV	+21	-0.7	+1.7	+1.3	-1.6	0.0
ACC	62%	44%	59%	58%	49%	44%
PERC	35	99	10	25	99	55

FC MARBLER 841 P
SCR TUFFY 0119
SCR MISS KING MICKY 7055

JCH MR BULL DOZER P146
SCR MS BABY DOLL 7140
SCR MISS ROYALTY 930

- Homozygous Polled (PP)
- One of the most impressive Charolais sires available. His overall body capacity and mass is extremely impressive along with impeccable foot structure and foot quality on this must use sire
- Combines great docility, marbling and growth with phenotype
- Triumph progeny in Australia have been impressive upon inspection and living up to expectations!

Reg# PMC355788

BD: 22 February, 2012

Frame: 7.0

BW: 90 lbs

WW: 647 lbs

YW: 1422 lbs

Scrotal: 46 cm



Progeny of Triumph



Progeny at Triumph - SCX JEHU 233E

WHEATON

SPARROWS WHEATON 101J

0200CH50719



FEB. 2024	CE DIR %	CE DTRS %	GEST LENGTH (DAYS)	BIRTH WT (KG)	200 DAY WT (KG)	400 DAY WT (KG)	600 DAY WT (KG)	MAT COW WT (KG)	MILK KG	DAYS TO CALVING	SCROTAL SIZE	DOCILITY	NFI-F
EBV	+10.8	-5.5	-4.6	-3.0	+13	+28	+31	+12	+9	-	+2.2	-	-
ACC	36%	34%	61%	64%	62%	59%	57%	53%	46%	-	58%	-	-
PERC	10	95	20	5	35	30	41	10	25	-	10	-	-

FEB. 2024	CARCASE WEIGHT	EYE MUSCLE AREA	RIB FAT	RUMP FAT	RETAIL BEEF YIELD	IMF
EBV	+19	-0.4	+1.7	+2.4	-2.0	+0.7
ACC	45%	42%	50%	48%	41%	41%
PERC	45	99	10	5	99	10

LT RIO BRAVO 3181 P
LT RUSHMORE 8060 PLD
LT BRENDA'S EASE 3055PLD

WINN MANS SKAGGS 663X
SPARROWS SPLENDOR 135G
SPARROWS SPENDOR 135A

- The total package!
- Wheaton is a standout in terms of body volume and internal dimension with strong performance, softness and moderation
- Wheatons Dam, Splendor 135G is a Winn Manns Skaggs daughter with great udder and foot structure

Reg# 822805

BD: 8 January, 2021

Frame: -

BW: 83 lbs

WW: 815 lbs

YW: 1421 lbs

Scrotal: 44 cm



Sire - LT RUSHMORE 8060 PLD



PGS - LT RIO BRAVO 3181 P

VAN HALEN

0200CH50322

TRI-N VAN HALEN 48H



FEB. 2024	CE DIR %	CE DTRS %	GEST LENGTH (DAYS)	BIRTH WT (KG)	200 DAY WT (KG)	400 DAY WT (KG)	600 DAY WT (KG)	MAT COW WT (KG)	MILK KG	DAYS TO CALVING	SCROTAL SIZE	DOCILITY	NFI-F
EBV	-	-	-3.6	-1.2	0	+5	+2	-8	-	-	+1.7	-	-
ACC	-	-	39%	45%	43%	36%	35%	29%	-	-	35%	-	-
PERC	-	-	30	20	99	99	99	99	-	-	20	-	-

FEB. 2024	CARCASE WEIGHT	EYE MUSCLE AREA	RIB FAT	RUMP FAT	RETAIL BEEF YIELD	IMF
EBV	-	-	+1.9	-	-	-
ACC	-	-	26%	-	-	-
PERC	-	-	10	-	-	-

HEJ CHESTER IC
HEJ EINSTEIN 28E
HEJ CATALINA SUNRISE 68C

TWN YANGSTER 27Y
TRI-N DAISY 627D
TRI-N DAISY 326A

- Homo Polled
- Offering an outcross pedigree with the ability to sire impressive phenotype and data set
- A calving ease option with growth
- Van Halen has been popular since release

Reg# PMC798048

BD: 19 February, 2020

Frame: -

BW: 90 lbs

WW: 819 lbs

YW: 1481 lbs

Scrotal: 39 cm



SIBLING TO DAM OF VAN HALEN

QANTAS

CHALLAMBI QANTAS

SBOQANTAS



FEB. 2024	CE DIR %	CE DTRS %	GEST LENGTH (DAYS)	BIRTH WT (KG)	200 DAY WT (KG)	400 DAY WT (KG)	600 DAY WT (KG)	MAT COW WT (KG)	MILK KG	DAYS TO CALVING	SCROTAL SIZE	DOCILITY	NFI-F
EBV	+5.3	-4.4	-6.2	-0.4	+22	+30	+37	+51	+8	-	+1.2	-	-
ACC	60%	49%	81%	86%	78%	76%	75%	69%	56%	-	74%	-	-
PERC	90	20	10	35	5	25	30	15	35	-	40	-	-

FEB. 2024	CARCASS WEIGHT	EYE MUSCLE AREA	RIB FAT	RUMP FAT	RETAIL BEEF YIELD	IMF
EBV	+22	+2.2	+1.2	+1.5	-0.4	+0.6
ACC	63%	55%	62%	61%	57%	54%
PERC	30	20	20	20	70	15

PALGROVE VIAGRA
PALGROVE DOVER
PALGROVE FLARE 83 PKA137E

SVY PILGRIM PLD 655S
CHALLAMBI SHOWGIRL L14
RANGAN PARK SHOWGIRL G22

- An Australian Heterozygous polled sire with a high-profile pedigree back by generations of great cows
- Smooth made, well-muscled individual that impressive on inspection and backed up with solid EBV's
- Appealing performance combining carcass traits in balanced set of EBV's across the board

Reg# CHAQBE

BD: 28 March, 2019

Frame: 5.8

BW: 45 kgs

WW: 405 kgs

YW: 665 kgs

Scrotal: 42 cm



GRAND DAM: RANGAN PARK SHOWGIRL G22

SKW

WOONALLEE S.K.W.

SBSKW



NCB COBRA 47Y
MADER WALK THIS WAY 224B
NCB MISS DREAM 22T

WOMBRAMURRA MANIFEST
WOMBRAMURRA L045
WOMBRAMURRA J227

- New for 2024
- Rated as one of the best bulls ever bred at Woonallee
- Powerfully made, free moving son of Mader Walk This Way, he has impressed all that have inspected him
- At the pointy end of the breed for Yearling Weight, Milk and Stay Ability, a bull that will certainly pack a punch in any progressive breeding programs going on in Australia, both stud and commercial

Reg# WEEPS477

BD: 16 August, 2021

Frame: 7.0

BW: 48 kgs

WW: 345 kgs

YW: 704 kgs

Scrotal: 40 cm

MAR. 24	CE	BW	WW	YW
EPD	8.2	4.3	92.9	143.5
ACC	0.49	0.47	0.47	0.47
RANK %	75	85	10	5

MAR. 24	AAPI	ATI	API	TI
EPD	64.44	55.98	139.49	86.11
ACC	-	-	-	-
RANK %	50	50	25	15

MAR. 24	MILK	MCE	MWWT	STAY	DOC
EPD	27.7	6.1	74.2	19.9	12.8
ACC	0.22	0.27	0.30	0.34	0.43
RANK %	10	45	2	10	45

MAR. 24	CW	REA	FAT	MARB	YG
EPD	32.4	0.79	-0.097	0.17	-0.40
ACC	0.40	0.40	0.34	0.38	0.33
RANK %	35	60	80	35	50

TRUE NORTH

LLW CARD TRUE NORTH G71
0200SM30344

HTF/SVF DURACELL T52
GSC GCCO DEW NORTH 102C
WELSH'S SCARLET 161Z

W/C RELENTLESS 32C
COX'S JOYS PRINCESS 711E
GCC JOYS ELEGANCE 199Y



- Homozygous Black, Homozygous Polled (PP) Purebred
- Unmistakable look and presence combined with being soft sided, square hipped and big topped
- Exciting outcross sire with impeccable structure being easy going and fluent on the move
- Tremendous cow family with many championship titles, his dam and grand dam display great udders and feet

Reg# 1361732

BD: 5 February, 2019

Frame: -

BW: 76 lbs

WW: 758 lbs

YW: -

Scrotal: 41cm



Dam - COX'S JOYS PRINCESS 711E



Daughter at Diamond M Cattle Company

BOLT 2024-03-18	CE	BW	WW	YW
EPD	13.8	0.2	76.0	103.2
ACC	0.65	0.81	0.70	0.68
RANK %	20	20	55	80

BOLT 2024-03-18	AAPI	ATI	API	TI
EPD	32.29	19.72	111.72	74.76
ACC	-	-	-	-
RANK %	100	95	80	55

BOLT 2024-03-18	MILK	MCE	MWWT	STAY	DOC
EPD	24.9	5.6	62.9	10.1	8.1
ACC	0.31	0.39	0.44	0.37	0.62
RANK %	25	55	35	95	95

BOLT 2024-03-18	CW	REA	FAT	MARB	YG
EPD	12.9	1.13	-0.069	-0.08	-0.52
ACC	0.50	0.51	0.37	0.48	0.39
RANK %	95	10	30	85	10

ASSET

ERIXON ASSET 91J
0200SM30730

KWA LAW MAKER 59C
DOUBLE BAR D LIBERATOR 412E
DOUBLE BAR D GALAXY 101X

KUNTZ SHERIFF 8A
ERIXON LADY 15D
ERIXON LADY 75B



- Asset is a Homozygous Polled (PP) sire with a commanding presence and popular safe pedigree
- Balanced performance data spread in an eye appealing package with impressive body dimension, capacity and soundness
- A calving ease option with great growth traits, docility, marbling, ribeye and API

Reg# 1348367

BD: 25 January, 2019

Frame: -

BW: 89 lbs

WW: 733 lbs

YW: 1411 lbs

Scrotal: 38.5cm



Sire - DOUBLE BAR D LIBERATOR 412E



MGD - ERIXON LADY 75B

BOLT 2024-03-18	CE	BW	WW	YW
EPD	6.8	3.9	86.7	142.7
ACC	0.49	0.56	0.50	0.51
RANK %	65	60	20	4

BOLT 2024-03-18	AAPI	ATI	API	TI
EPD	-	-	117.60	76.41
ACC	-	-	-	-
RANK %	-	-	30	20

BOLT 2024-03-18	MILK	MCE	MWWT	STAY	DOC
EPD	23.7	3.0	67.1	16.9	14.9
ACC	0.17	0.24	0.28	0.32	0.40
RANK %	60	70	40	25	10

BOLT 2024-03-18	CW	REA	FAT	MARB	YG
EPD	44.3	1.01	-0.086	-0.08	-
ACC	0.40	0.36	0.30	0.32	-
RANK %	3	20	80	60	-

AFFINITY

WHEATLAND AFFINITY 8196F
0200SM30727

WS PILGRIM H182U
CCLT ALLIANCE 91C
BROOKS SHINIA 1A

GOLDEN OPPORTUNITYHR R851
WHEATLAND LADY 913W
WHEATLAND LADY 751 T



- Homozygous Polled (PP) calving ease option being one of the most sought-after red sons of the popular black sire CCLT Alliance
- Exceptional structure with an attractive look, Affinity is producing progeny cut out of the same mold as himself across Australia
- Dam has impeccable udder quality and maternal ability
- Will have many sons hit sales in 2024, and they scream quality!

BOLT 2024-03-18	CE	BW	WW	YW
EPD	12.6	1.0	64.2	80.2
ACC	0.66	0.79	0.73	0.72
RANK %	25	30	90	100

BOLT 2024-03-18	AAPI	ATI	API	TI
EPD	29.34	15.56	119.58	70.41
ACC	-	-	-	-
RANK %	100	95	65	80

BOLT 2024-03-18	MILK	MCE	MWWT	STAY	DOC
EPD	18.9	6.9	51.0	12.8	1.9
ACC	0.34	0.40	0.47	0.36	0.55
RANK %	75	35	90	80	100

BOLT 2024-03-18	CW	REA	FAT	MARB	YG
EPD	10.1	0.60	-0.104	0.13	-0.45
ACC	0.52	0.46	0.40	0.48	0.39
RANK %	100	90	90	40	30

Reg# 1252370

BD: 16 April, 2018

Frame: 6.4

BW: 83 lbs

WW: 869 lbs

YW: 1543 lbs

Scrotal: 40 cm



Progeny Woonallee Tabasco



Progeny at Indian River Cattle Co.

Y-ARTA

GLEN ANTHONY Y-ARTA AY02

GLEN ANTHONY SGT. PEPPER
WAI-ITI HIGH RISER
WAI-ITI PAULA 5

TOKAWEKA HANDSOME
WILLOWBROOK URSULINA
WILLOWBROOK FERGIE



- Has become a breed legend with high accuracy as he continues to create great progeny
- Continues to dominate as possible the most elite calving ease sire of him time
- Outstanding docility and exceptional phenotype which is stamped into his progeny time and time again

BOLT 2024-03-18	CE	BW	WW	YW
EPD	12.7	2.8	77.5	108.3
ACC	0.64	0.82	0.73	0.73
RANK %	2	10	25	30

BOLT 2024-03-18	AAPI	ATI	API	TI
EPD	95.06	46.35	116.91	70.19
ACC	-	-	-	-
RANK %	1	35	5	20

BOLT 2024-03-18	MILK	MCE	MWWT	STAY	DOC
EPD	34.3	8.7	73.1	18.4	21.5
ACC	0.53	0.50	0.60	0.42	0.59
RANK %	10	2	10	5	1

BOLT 2024-03-18	CW	REA	FAT	MARB	YG
EPD	19.9	0.36	-0.111	-0.18	-0.35
ACC	0.55	0.48	0.38	0.52	0.39
RANK %	55	100	45	80	100

Reg# G91036901

BD: 14 February, 2010

Frame: -

BW: 93 lbs

WW: - lbs

YW: - lbs

Scrotal: -



Y-Arta Progeny

JAMIE

BILJ POL JAMIE 31J

0200SM30353

VIRGINIA MAXIMUS
ANCHOR D RAPTOR 392C

ANCHOR D ZILEY 392Z

SIBELLE SPARTACUS 8A

SIBELLE ABEL 31F

SIBELLE ARIELLE 2C



- New to our lineup in 2024
- Our search for the next breed impacting polled traditional Simmental sire led us to BILJ POL Jamie
- Easy fleshing and sound structure with tremendous thickness and performance all wrapped up in a calving ease package
- From a highly productive dam with perfect udder quality

Reg# 1390695

BD: 3 December, 2021

Frame: 5.8

BW: 83 lbs

WW: 960 lbs

YW: 1448 lbs

Scrotal: 39.5 cm



Dam - SIBELLE ABEL 31F

BOLT 2024-03-18	CE	BW	WW	YW
EPD	10.0	4.9	94.0	137.0
ACC	0.41	0.44	0.47	0.47
RANK %	30	75	5	10

BOLT 2024-03-18	AAPI	ATI	API	TI
EPD	-	-	117.97	77.86
ACC	-	-	-	-
RANK %	-	-	30	15

BOLT 2024-03-18	MILK	MCE	MWWT	STAY	DOC
EPD	35.9	5.7	82.9	19.0	14.8
ACC	0.19	0.22	0.28	0.31	0.38
RANK %	10	30	1	10	10

BOLT 2024-03-18	CW	REA	FAT	MARB	YG
EPD	44.1	0.95	-0.127	-0.20	-
ACC	0.37	0.35	0.30	0.33	-
RANK %	3	30	15	95	-

GRASS ROOTS

BLCC GRASS ROOTS 70G

0200LM60313

WULFS ZIPLOCK N922Z
LFLC BANK ACCOUNT 701B

LFLC 701X XTRA GOOD

GREENWOOD CANADIAN IMPACT ET

GREENWOOD EVELYN PYN 70E

GREENWOOD PLD BOMB SHELL



- The perfect blend of herd improving data with industry leading phenotype
- Dam and Grand dam are exceptional females with strong maternal traits from the famed Greenwood Limousin program
- Australian breeders have noted how soft fleshing and easy doing the Grass Roots progeny are and continues to get strong use

Reg# CPM4098289

BD: February 3, 2019

Frame: -

BW: 78 lbs

WW: 827 lbs

YW: 1368 lbs

Scrotal: 35 cm



MGD - GREENWOOD PLD BOMB SHELL



Progeny of Grass Roots

MARCH 2024	CE DJR %	CE DTRS %	GEST LENGTH (DAYS)	BIRTH WT (KG)	200 DAY WT (KG)	400 DAY WT (KG)	600 DAY WT (KG)	MAT COW WT (KG)	MILK KG	DAYS TO CALVING	SCROTAL SIZE	DOCILITY	NFI-F
EBV	+2.1	-0.7	-1.1	+0.8	+17	+36	+46	+42	+10	-	+1.3	+55	-
ACC	37%	28%	63%	58%	53%	51%	50%	36%	30%	-	39%	54%	-
PERC	35	85	85	25	90	60	75	80	20	-	35	30	-

MARCH 2024	CARCASS WEIGHT	EYE MUSCLE AREA	RIB FAT	RUMP FAT	RETAIL BEEF YIELD	IMF	DOMESTIC MATERNAL (\$)	EXPORT MATERNAL (\$)	NORTHERN EXPORT (\$)	YEARLING PRIME (\$)
EBV	+32	+3.5	+0.5	+0.8	+0.4	+0.3	+51	+68	+80	+45
ACC	35%	25%	30%	29%	27%	26%	-	-	-	-
PERC	60	7	8	9	80	15	35	50	60	55

WILDFIRE

INJEMIRA WILDFIRE P021 (PP)
0200HP50900

DAYS ROBIN HOOD H38
RAVENSDALE WILDFIRE L133
MERAWAH IRISH ROSE B1
REDGATE REDFORD D935
INJEMIRA HAPPY DAY L003
INJEMIRA HAPPY DAY J042



FEB. 2024	CE DIR %	CE DTRS %	GEST LENGTH (DAYS)	BIRTH WT (KG)	200 DAY WT (KG)	400 DAY WT (KG)	600 DAY WT (KG)	MAT COW WT (KG)	MILK KG	DAYS TO CALVING	SCROTAL SIZE	DOCILITY	NFI-F
EBV	+2.7	+4.3	-4.0	+5.0	+37	+58	+88	+78	+28	+0.4	+1.9	-	-
ACC	54%	43%	75%	81%	75%	72%	75%	66%	60%	38%	78%	-	-
PERC	50	30	10	60	45	55	40	40	1	99	65	-	-

FEB. 2024	CARCASE WEIGHT	EYE MUSCLE AREA	RIB FAT	RUMP FAT	RETAIL BEEF YIELD	IMF
EBV	+55	+2.9	-0.4	+0.1	+1.3	-0.7
ACC	61%	53%	55%	59%	53%	56%
PERC	50	90	90	75	55	99

- Injemira Wildfire P21 has bred as expected sire quality progeny with mass and style
- Phenotypically impressive and moves on sound feet and legs.
- 100/100 pigment and Homozygous Polled (PP)
- Wildfire progeny have excelled in both the stud and commercial parts of the industry. Bulls have sold well, steers have topped weaner sales and show progeny have dominated.
- Still looks good today being super sound as a mature bull

BD: 28 April, 2018

Frame: 6

BW: 31 kg

WW: 386 kg

YW: - kg

Scrotal: 38 cm



BOLDER

CSC 701 BOLDER 901
0200HP40317

TH 121L 63N TUNDRA 16S
TH 22R 16S LAMBEAU 17Y
TH 62N 3L KELSEY 22R
CHURCHILL SENSATION 028X
CSC 502 LADY DEW 701
CSC 10Y LADY DEW 502ET



FEB. 2024	CE DIR %	CE DTRS %	GEST LENGTH (DAYS)	BIRTH WT (KG)	200 DAY WT (KG)	400 DAY WT (KG)	600 DAY WT (KG)	MAT COW WT (KG)	MILK KG	DAYS TO CALVING	SCROTAL SIZE	DOCILITY	NFI-F
EBV	+11.1	+7.6	-2.3	+1.7	+36	+59	+75	+40	+24	-3.1	+2.8	-	-
ACC	37%	28%	65%	65%	65%	64%	64%	58%	55%	30%	63%	-	-
PERC	5	5	25	10	50	50	70	95	5	40	25	-	-

FEB. 2024	CARCASE WEIGHT	EYE MUSCLE AREA	RIB FAT	RUMP FAT	RETAIL BEEF YIELD	IMF
EBV	+52	+2.7	+2.3	+2.5	+0.1	+0.4
ACC	4%	47%	51%	52%	42%	52%
PERC	60	90	5	10	85	65

- Homozygous Polled (PP)
- Bold ribbed, big hipped and thick made calving ease specialist
- Exceptional maternal line stemming from the same cow family as breed legend NJW 88X
- Top 5% calving ease, top 10% BW, Milk, Rib and Rump fats

Reg# C03069531

BD: 20 February, 2019

Frame: 5.7

BW: 79 lbs

WW: 749 lbs

YW: 1191 lbs

Scrotal: 39 cm



Dam - CSC 502 LADY DEW 701



MGD - CSC 10Y LADY DEW 502ET

PHANTOM

MURIDALE PHANTOM 10F

0200SP00302

BONNYVIEW HERO 7Z
MURIDALE IRON MAN 4X
MURIDALE MOLINARI 8P

SASKVALLEY BONANZA 219M
MURIDALE GOOSE 76Y
MURIDALE SWAN 54N



BOLT 2024-03-18	CE	BW	WW	YW
EPD	12.2	-0.4	50.5	69.9
ACC	57%	72%	63%	62%
RANK %	15	10	65	75

BOLT 2024-03-18	AAPI	ATI	API	TI
EPD	-	-	145.95	-
ACC	-	-	-	-
RANK %	-	-	1	-

BOLT 2024-03-18	MILK	MCE	MWWT	STAY	DOC
EPD	24.6	5.7	49.9	22.8	16.4
ACC	17%	26%	32%	33%	46%
RANK %	30	50	40	1	5

BOLT 2024-03-18	CW	REA	FAT	MARB	YG
EPD	-6.1	0.13	-0.076	0.11	-0.29
ACC	45%	40%	30%	37%	33%
RANK %	60	95	30	10	90

Reg# M481278

BD: 20 March, 2018

Frame: -

BW: 90 lbs

WW: 714 lbs

YW: 1106 lbs

Scrotal: -



Dam - MURIDALE GOOSE 76Y

- Top level calving ease marbling and stayabilty with a pedigree highly regarded for maternal function
- Deep sided, easy fleshing sire with correct foot shape
- Excellent reports on early progeny in Australia makes this good shaped sire a go to for 2024

JUDGEMENT CALL

KFC JUDGEMENT CALL 301J

0200SK00702

RIVER HILL 26T WALKER 60W
RIVER HILL 60W EXCALIBUR 345E
PRARIE HILL DREAMER 88K

SPOTS N' SPROUTS ZENITH 106Z
RIVER HILL COME AWAY W/ME 9C
RIVER HILL 64S WYLD A 09W



MAR. 2024	CE DJR %	CE DTRS %	GEST LENGTH (DAYS)	BIRTH WT (KG)	200 DAY WT (KG)	400 DAY WT (KG)	600 DAY WT (KG)	MAT COW WT (KG)	MILK KG	DAYS TO CALVING	SCROTAL SIZE	DOCILITY	NFI-F
EBV	-	-	-1.9	+2.7	+32	+43	+56	+58	+4	-	+1.0	-	-
ACC	-	-	41%	67%	60%	53%	53%	39%	34%	-	40%	-	-
PERC	-	-	5	75	5	5	5	10	55	-	25	-	-

MAR. 2024	CARCASE WEIGHT	EYE MUSCLE AREA	RIB FAT	RUMP FAT	RETAIL BEEF YIELD	IMF
EBV	+36	+1.4	-1.0	-1.5	+1.1	-0.1
ACC	38%	28%	37%	36%	32%	32%
PERC	5	15	95	95	10	65

Reg# 13787

BD: 1 January, 2021

Frame: -

BW: 85 lbs

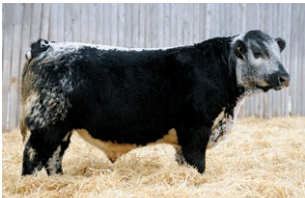
WW: 788 lbs

YW: 1425 lbs

Scrotal: -



Dam - RIVER HILL COME AWAY W/ME 9C



Sire - RIVER HILL 60W EXCALIBUR 345E

- Judgement Call sparked worldwide interest as a much sought after high selling bull in the 2022 KFC Farms sale as he ticks many boxes the breeders have been looking for
- Myostatin free, Coat colour ED/ED and Homozygous Polled (PP)
- Powerfully built with softness, soundness, and a great eye appeal
- Breeders that got in early are extremely impressed with the consistency and performance of the progeny
- High Ranking sire for Gestation Length, 200, 400 and 600 day weight, carcase weight, EMA and selection indexes

EXTREME

ANDCHRIS EXTREME 23E
0200SK00301



MAR. 2024	CE DIR %	CE DTRS %	GEST LENGTH (DAYS)	BIRTH WT (KG)	200 DAY WT (KG)	400 DAY WT (KG)	600 DAY WT (KG)	MAT COW WT (KG)	MILK KG	DAYS TO CALVING	SCROTAL SIZE	DOCILITY	NFI-F
EBV	-	-	+0.4	+4.0	+28	+46	+59	+73	+1	-	+0.9	-	-
ACC	-	-	76%	93%	89%	88%	87%	73%	59%	-	77%	-	-
PERC	-	-	65	95	5	5	5	5	10	-	10	-	-

MAR. 2024	CARCASE WEIGHT	EYE MUSCLE AREA	RIB FAT	RUMP FAT	RETAIL BEEF YIELD	IMF
EBV	+33	+1.0	+2.0	+2.7	-1.5	+1.0
ACC	75%	57%	71%	70%	67%	65%
PERC	10	25	5	5	95	5

RAVEN MEADOWS MAGNUM 10N
UPTO SPECS ULYSSES 25U
PRAIRIE HILL REBA 154F
SPOTS 'N SPROUTS UNO 102U
SECOND CHANCE ZOEY 3Z
TIA-ROSE OF SARA LEE 3T

- Breed leading sire for growth and carcase traits including selection indexes
- Progeny are proving to be consistent, easy doing, high performance and sound structure with his daughters having great maternal traits
- Backed by a solid cows family and sire by breed legend in Ulysses, Extreme 23E is one of the most complete sires in the Speckle Park breed.
- Myostatin free, Coat colour ED/ED and Homozygous Polled (PP)

Reg# 8242-PB

BD: 24 February, 2017

Frame: -

BW: 95 lbs

WW: 850 lbs

YW: 1430 lbs

Scrotal: - cm



Progeny Alinjarra Silicon S044



Progeny Battalion Eclipse T218

TRADE SECRET

JSF TRADE SECRET 11A
0200SK00701



MAR. 2024	CE DIR %	CE DTRS %	GEST LENGTH (DAYS)	BIRTH WT (KG)	200 DAY WT (KG)	400 DAY WT (KG)	600 DAY WT (KG)	MAT COW WT (KG)	MILK KG	DAYS TO CALVING	SCROTAL SIZE	DOCILITY	NFI-F
EBV	-	-	-4.7	-1.3	+19	+26	+27	+15	-1	-	0.0	-	-
ACC	-	-	88%	97%	94%	93%	93%	86%	82%	-	90%	-	-
PERC	-	-	1	5	35	40	60	85	95	-	70	-	-

MAR. 2024	CARCASE WEIGHT	EYE MUSCLE AREA	RIB FAT	RUMP FAT	RETAIL BEEF YIELD	IMF
EBV	+22	+0.7	-0.2	-0.4	+0.6	-0.5
ACC	86%	74%	84%	84%	82%	79%
PERC	40	45	70	75	20	90

REDNECK WILD WILLY 2W (AI) (P)
YOGI GOES REDNECK 7Y
ASPEN ACRES LINDA LOU 10L
RIVER HILL SHOW BIZ 93S (P)
MONNERY RIVER 7W (P)
MONNERY RIVER 7P

- Excellent calving ease sire with strong growth and shape in his progeny
- With over 450 registered progeny Trade Secret is one of the most reliable sire in the Speckle Park breed
- Daughters display strong maternal traits with great udders making outstanding brood cows

Reg# 4414-PT

BD: 9 March, 2013

Frame: -

BW: 77 lbs

WW: 810 lbs

YW: 1380 lbs

Scrotal: 36 cm



Dam - MONNERY RIVER 7W (P)



Progeny at Wolf Lake Speckle Park

OTHER SIRES AVAILABLE

ANGUS

De-Su **RENEGADE** C212
Pathfinder **MASTERPIECE** M651
Pine View **PREFERENCE** H119
RAML **HIGH GRADE** 9651
Raven **STEP UP** F447
Schiefelbein **ATTRACTIVE** 4565
Texas **NO REGRETS** N046

ANGUS - Sexxed

Quaker Hill **COLUMBUS** 6V48 (Male)

BRANGUS

DMR **CLIMAX** 30F46 (Black)
SMX **BANDIDO** 4086 (Red)
SMX **TORO ROJO** 4085 (Red)

CHAROLAIS

Dalmas **CASINO** 375C
Palgrove **HALLMARK** (AI)(P)(R&F)

DROUGHTMASTER

Glenlands D **SANDLEWOOD** (P) D5
Strathfield **XPLODE** (P) D5

GELBVIEH

DDGR **RESILENT** 275D

HEREFORD - Polled

NJW 78P **TWENTYTWELVE** 190Z

LIMOUSIN

Mandayen **GUARDIAN** A488

MURRAY GREY

Michaelong **SILVER EDWARD** L7

PINZGAUER

Ravensbrook **CAESAR** (H)

RED POLL

Balla Balla **BELLAMY**
Raedean **MAXIMUS**

SENEPOL

PHA **MILPARINKA**
ODS 5225 **HEISMAN** K2
RBS **9704G**
TT TnT's **PROSPERITY** 12L
WC 112N
WC 123
WC 950K

SHORTHORN

ARG **HECTOR** 1777

SIMMENTAL

DCR MR **MOON SHINE** X102
Ellingson **KLONDIKE** Y123 (Red)
FGAF **GUERRERO** 810Y
FSMB Pol **EDDY** 3E
Grinalta's HP **SENSATION** FF909D
JNR **GRAVITY**
WLB **BOUNTY HUNTER** 365C (Black)

SPECKLE PARK

Almarlea F160 **EXTREME** M81
Dangit **MATTERS** 22D
Maungahina **PREMIER** P203

WELSH BLACK

Silver Metal **DELM** (H)



PATHFINDER **MASTERPIECE** M651



DMR **CLIMAX** 30F46 (Black)



DALMAS **CASINO** 375C



MANDAYEN **GUARDIAN** A488



MICHAELONG **SILVER EDWARD** L7



PHA **MILPARINKA**



WLB **BOUNTY HUNTER** 365C



MAUNGAHINA **PREMIER** P203

Available while stocks last. All prices quoted are Recommended Retail Price excluding GST. Prices subject to change without notice.



Office & Warehouse: 2 Station Street, Maddingley Vic 3340 | Postal: P O Box 748, Bacchus Marsh Vic 3340
Phone: 03 4367 7841 • E: semex@semex.com.au • W: www.semex.com.au   

Tyson Shea

General Manager

Mobile: 0431 303 853

Phone: (03) 4367 7841

tysonshea@semex.com.au

Joseph Holloway

*National Key Accounts
& Solutions Manager*

Mobile: 0400 950 046

joseph.holloway@semex.com.au

Alexandra Mathews

Product Support

Mobile: 0428 819 551

amathews@semex.com.au

AREA MANAGERS

Cameron Cutler

Mobile: 0438 640 221

Beef Product Support & Area Manager Far Western Victoria & SE South Australia

ccutler@semex.com.au

Vaughn Johnston

Mobile: 0408 304 526

National Sales Manager, Area Manager South Australia & Western Australia

Ph: (08) 8388 4468 vaughnjohnston@semex.com.au

Peter Dickson

Mobile: 0428 539 040

Area Manager Western Victoria & Tasmania

peter.dickson@semex.com.au

Mitchell Clark

Mobile: 0459 335 752

Area Manager Gippsland

mclark@semex.com.au

Hayden Williamson

Mobile: 0439 150 646

Area Manager Northern Victoria & Southern NSW

hwilliamson@semex.com.au

David Ninness

Mobile: 0427 305 269

Area Manager South Coast, Far South Coast, Hunter, New England & Central West NSW

Ph: (02) 4930 5268 davidninness@semex.com.au

Karen Polson

Mobile: 0428 535 183

Area Manager Northern NSW & Queensland South East & Far North Qld

Karen_Yarnold@semex.com.au

Available while stocks last. All prices quoted are Recommended Retail Price excluding GST. Prices subject to change without notice.

Limitation of Liability: The information contained herein is from sources we believe to be reliable, nevertheless Semex Pty Ltd gives no warranty and makes no representation as to the accuracy of such information. Any person relying upon any information set out herein does so entirely at their own risk and shall not have any claim against Semex Pty Ltd for any loss or damage which they thereby sustain.