

Cover art by Addison Lanaue

73rd Annual East Middleboro 4-H Fair

4-H Grounds, 183 Thompson St. (Route 105), Middleboro, MA 02346

Saturday, August 31st, 2024 8:00 am-6:30 pm

Sunday, September 1st, 2024 8:00 am-5:30 pm

The 2024 East Middleboro 4-H Fair is dedicated to the memory of our beloved member, giving so much to our club and the entire 4-H community, George Allen



Head – Heart – Health and Service



George Allen was a lifelong 4-Her. As a child, George was a 4-H member having shown sheep and prize-winning turkeys. He was even on Romper Room, a beloved local children's TV show, talking about his turkeys! As an adult, George gave back to the community volunteering as a livestock leader at East Middleboro, teaching kids how to raise animals from sheep to cows. As well as being a club leader George was an integral part of the East Middleboro Fair, serving as the fair chairperson for many years. At fair time he could be found sitting in his truck next to the wash stands overseeing the ongoing fair. In his last days, George was asked if there was any place he would like to go one last time. He chose the East Middleboro 4-H clubhouse. The clubhouse was a favorite place of his, holding so many wonderful memories of past fairs, Community Committee meetings, 50's dinners, and lifelong friends. We are so grateful for George, his devotion to our youth, and the 4-H community of all ages. We will miss you dearly.



TABLE OF CONTENTS

General Fair Background	4
4-H Clubs and Leaders	4
Junior Leaders	5
East Middleboro 4-H Community Committee	5
The Fabulous Fifties	5
Fair Schedule	6
Dress Code.....	7
Age Classification	7
Record Requirements	7
Exhibitor Requirements.....	7
Enrollment 2019-2020	7
Project Entry Information.....	8
Award Information	8
Club Exhibits	9
Costume Parade	9
Static Entry Categories	10-18
Records	10
Arts and Crafts.....	10
4-H Poster Contest.....	11
Science and Nature	11
S.T.E.M.	12
Fleece Contest	13
Foods	14
Special Food Contests	14
Flowers	15
Indoor Plants.....	15
Outdoor Container Gardens.....	15
Special Contests	15
Vegetables	16
Handwork	17
Sewing	17
Quilting.....	17
Horse	17
Visual Presentations	17
Photography.....	18
Woodworking	19
Animal Entry Categories	21-27
General Rules and Premiums	21
Beef	22
Dairy	22
Dog	23-24
Goats	25
Sheep	25
Swine	26
Poultry	26
Rabbits and Cavy	27
Various Awards	28
Scholarships.....	28
Entry Forms	See Website: https://www.em4h.org/fair



THE 4-H PLEDGE

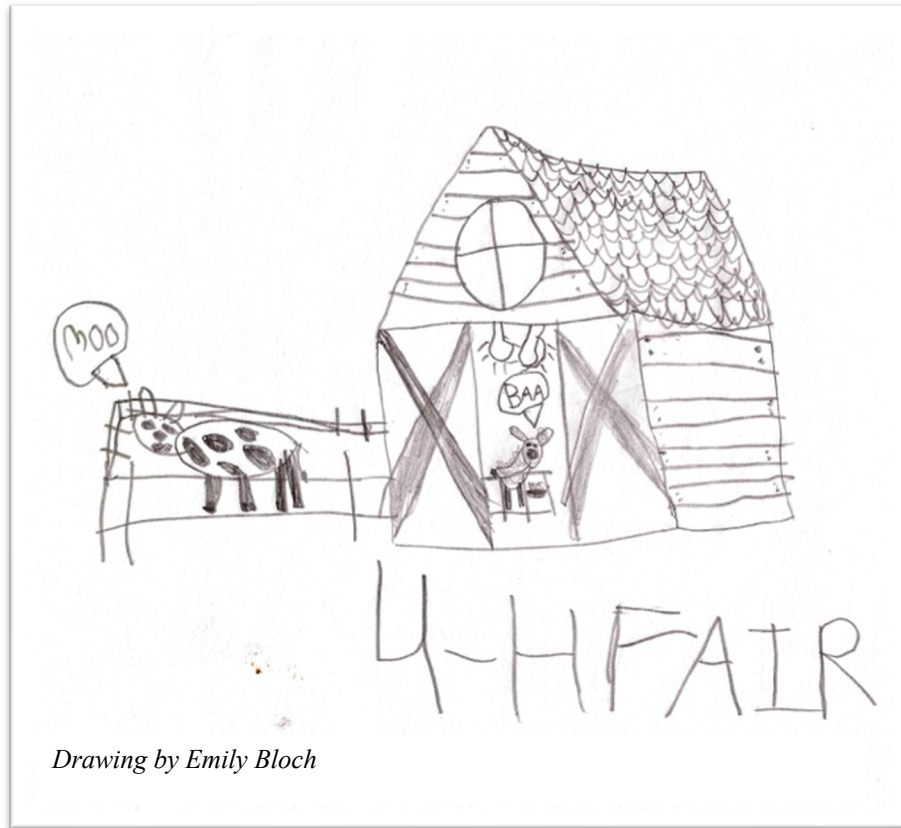
I pledge my **HEAD to clearer thinking.
My **HEART** to greater loyalty.
My **HANDS** to larger service.
My **HEALTH** to better living, for my
Club, my community, my country, and my world**

GENERAL INFORMATION

4-H is the largest out-of-school educational youth program in the world. The 4-H Youth and Family Development Program (known simply as 4-H) is a program of the United States Department of Agriculture, the University of Massachusetts, Amherst, and the County Government. At the local level the clubs are led by qualified, adult volunteer leaders. The East Middleboro 4-H organization has grown throughout its sixty years. Organized in 1950, the East Middleboro 4-H Community Committee is made up of leaders, junior leaders, and former leaders, and assists in the maintenance of the schoolhouse and grounds helps in many ways during the Fair, and sponsors a scholarship for East Middleboro 4-H youth going on to school whose family has contributed time and effort to East Middleboro 4-H.

2023-2024 East Middleboro 4-H Clubs and Leaders

Baking	Eric Easter	Livestock	Jen Duhon
Cloverbud	Brenda Easter	Poultry	Heather Finneran
Community Service	Michelle Cates	Crafts	Leigh Long Brenda Easter
		Dogs	Christine Hoyt Mellenie Lanoue Kendra Garcia Terry Gardiner
Rabbits	Mindy Menard	Science	Heather Kundzicz Carlos Fragata Sarah Norris Jennifer Tinkham Natalia Slater
Gardening	Brenda Easter Marlene Peters		



Junior Leaders

Morgan Duhon
Logan Gove
Samantha Long
Abigaile Oakman

Faith Flateau
Addison Lanoe
William Long

Cara Finneran
Leianne Lane
Zoe Norris

The East Middleboro 4-H Community Committee

Membership includes all leaders, junior leaders, and the following volunteers:

Joe & Sheryl Amaral
Stacy Leary
Bonnie & Chris Soule
Bill Strojny
Dave Davenport
Duncan Hay
Shawn and Erin Barry

Bill & Caroline LaCroix
Susan Shields
Hilda Buck
Sandra Wetteland
Jeanne Lothrop
Stephanie and ChaChi Loprete

Jackie Angers
Gwendy Blanchard
Betty Powell
Jill Hay
Charlie & Peg Chace
Ken Breen

The East Middleboro 4-H Fair

The annual Fair is sponsored and presented solely by the East Middleboro Community Committee, friends, and East Middleboro 4-H members to allow the 4-Hers to present their project work to the public, raise funds to sustain local 4-H programs, and to provide a social activity for the community. Projects to be exhibited are as follows:

Arts
Beef
Child Care
Crafts
Dairy Cattle
Dog
Fashion Review
Fishing

Foods
Gardening
Goats
Handwork
Horse & Horse Lovers
Poultry
Photography
Quilting

Rabbits and Cavies
Science and Nature
Sewing
Sheep
Spinning
S.T.E.A.M.
Swine
Tractor
Woodworking



2024 East Middleboro 4-H Fair Schedule

Wednesday	August 28th	6:00-8:30pm	Non-Perishable and Club Exhibits
Thursday	August 29th	6:00-7:30pm	Foods, Flowers & Vegetable Exhibits ONLY
Saturday	August 31st	by 7:30am	All Animal Exhibits Arrive

Insurance Animal Waiver Form must be signed and turned in

Saturday, August 31st

8:00 am	Fair Opens
	Country Store Opens
8:00 – 11:00 am	Breakfast Served
9:30 am	Rabbit Show – Rabbit Tent
9:45 am	Welcoming Ceremony
	Registration for Open Cribbage Tournament
10:00 am	Open Cribbage Tournament
10:30 am - 1:30 pm	Agility Trial
12:00 pm	Swine Show – Pole Barn
1:30 pm	Poultry Showmanship
2:45 pm	Scholarship Recognition
3:00 pm – 6:30 pm	Auction
6:30 pm	Fair Closes

Sunday, September 1st

8:00 am	Non-denominational Worship Service and Blessings of the Animals
9:00 am	Registration for Briggs Memorial Horseshoe Tournament
9:00 – 11:00 am	Breakfast Served
10:00 am	Dog Show
	Dog Rally
11:30 am	Goat Show
12:00 pm	Sheep Show
1:30 pm	Beef and Dairy Show
2:00 pm	Visual Presentations
2:30 pm	Sunflower Contest Results
3:00 pm	Open Children's and Animal Costume Parade
5:30 pm	Animals Released

Monday, September 2nd

9:00 am	Entries Released and Clean-up Commences – All Hands On Deck!
---------	---

Important General Information for Exhibitors

- **Dress Code:** It will be mandatory at this Fair that all exhibitors shall be neatly and cleanly dressed. In addition to this each member shall at ALL times while on the grounds display in some manner the 4-H emblem.
 - **Livestock Exhibitors:** It is required to wear the following during all classes and contests:
White T-Shirt or 4-H Shirt and suitable pants, slacks, skirts, and footwear required. No sneakers or sandals for safety reasons.
- Entries are limited to members enrolled and in **good standing in 4-H Clubs** and who have complied with all club requirements.
- **Age Classification** --- As of January 1st of the Current year
 - **Seniors: 14-18 years old**
 - **Juniors: 8-13 year old**
 - **Cloverbuds: Under 8 years old**
- **Records:** Keeping records is an important part of your project work.
 - When entering exhibits, **ALL LIVESTOCK** exhibitors may turn in an **UP-TO-DATE MAIN PROJECT RECORD**.
- To qualify for a **Rosette (Best of Show)** for a project taken individually (without a leader – Does NOT pertain to Livestock) a Project Record may be submitted with the entries. All entries must have been made by exhibitor during the current year.
 - Records may be submitted as an entry to the Fair. Include only this year's projects that you have carried with East Middleboro, the Mass. Summary and extra pictures and clippings. Records will be judged for accomplishment, accuracy and appearance. Blank record forms may be obtained on the website, your leader, or by calling the Plymouth County 4-H Office.
 - Cash awards of \$15, \$12, \$10, \$8, \$6, and \$4 will be given to the top six sets of records in the Senior and Junior Divisions. One rosette will be awarded to the top record. In accordance with state regulations all Cloverbuds will receive ribbons.
- **Exhibits:** All Static Exhibits and Animal Exhibits are to remain until the Fair closing.
- **Judges:** Are chosen by the Fair committee. **Judge's Decisions are Final.** All legitimate grievances may be presented by the 4-H member to the Executive Board in the 4-H office. Fair play and good sportsmanship are expected from all exhibitors and parents.
- **Premiums:** Will be presented at Achievement Night that will be held in the Fall. Family and friends of 4-Hers are invited and encouraged to attend.
- **Enrollment for 2024-2025:** Current members must fill out an enrollment card for next year. Cards are available in the School House during the Fair.

The East Middleboro 4-H Community Committee and 4-H members will not be responsible for the loss of/or damage to exhibits nor injury to animals.

Project Entries

- All items for exhibit must have been produced and/or prepared by the exhibitor since October 1st of the preceding year.
- Up-to-date project records to be judged must accompany entry forms.
- **All entries – including animals** – should be listed on the Entry Form (available for download at <https://www.em4h.org/fair>) and presented at the time of entry.
- Write a complete description of each static item so it is easily identified.
- Entry Tags may be obtained at the clubhouse – filled out and attached to each item before entry. Cloverbuds are included.
- Entries are accepted as follows:
 - Wednesday, August 28th 6-8:30pm All non-perishable and club exhibits
 - Thursday, August 29th 6-7:30pm Foods, Flowers, Vegetable exhibits **ONLY**
 - *Late Entries will be exhibited but not judged.*
 - Saturday, August 31st by 7:30am All animal exhibits
 - Sunday, September 1st **Animals** will be released at Fair end
 - Monday, September 2nd Pick-up all **Static** entries and exhibits
- **4-H members are responsible for the care and feeding of their animals during the Fair.**

Award Information

- **Judging** of livestock and static exhibits is on the **Danish System**. This means each animal, project, or article is judged on its own merit and awarded the appropriate ribbon.
 - The top three blue ribbon entries will then be judged in order of excellence and those listed as premium classes will be awarded premiums.
 - A Rosette will be awarded to the outstanding entry in each project.
- **Static Exhibits** – exhibits which are on display in the schoolhouse
 - Each department is divided into Juniors and Seniors.
 - Premiums will be awarded in each lot to the top 3 blue ribbon exhibits as follows:
 - 1st \$3, 2nd \$2, 3rd \$1 (Premiums are dependent upon the success of the Fair and may be prorated)
 - Premiums are awarded at Achievement Night in the fall.
 - *In accordance with state regulations Cloverbud exhibits will not be judged or receive premiums, but will receive rosettes.*
 - The decisions of the judges are final. Judges may disqualify any entry that does not follow the instructions for the class.
- **Sweepstakes Awards** - will be given to the Senior and Junior boys and girls who earn the most points at this Fair.
 - Club members must accumulate at least 30 points to be eligible for the Sweepstakes.
 - Points are figured as follows
 - 3 points = Blue Ribbon
 - 2 points = Red Ribbon
 - 1 point = White Ribbon
 - Maximum of 21 points per project count toward the Sweepstakes Award (Ribbon will be given on all entries)

- Any East Middleboro 4-H club member may make entries in:

Arts	Foods	Photography	Spinning
Crafts	Handwork	Quilting	Vegetables
Child Care	Horticulture	Science & Nature	Visual Presentations
Fishing	Livestock	Sewing	Woodworking

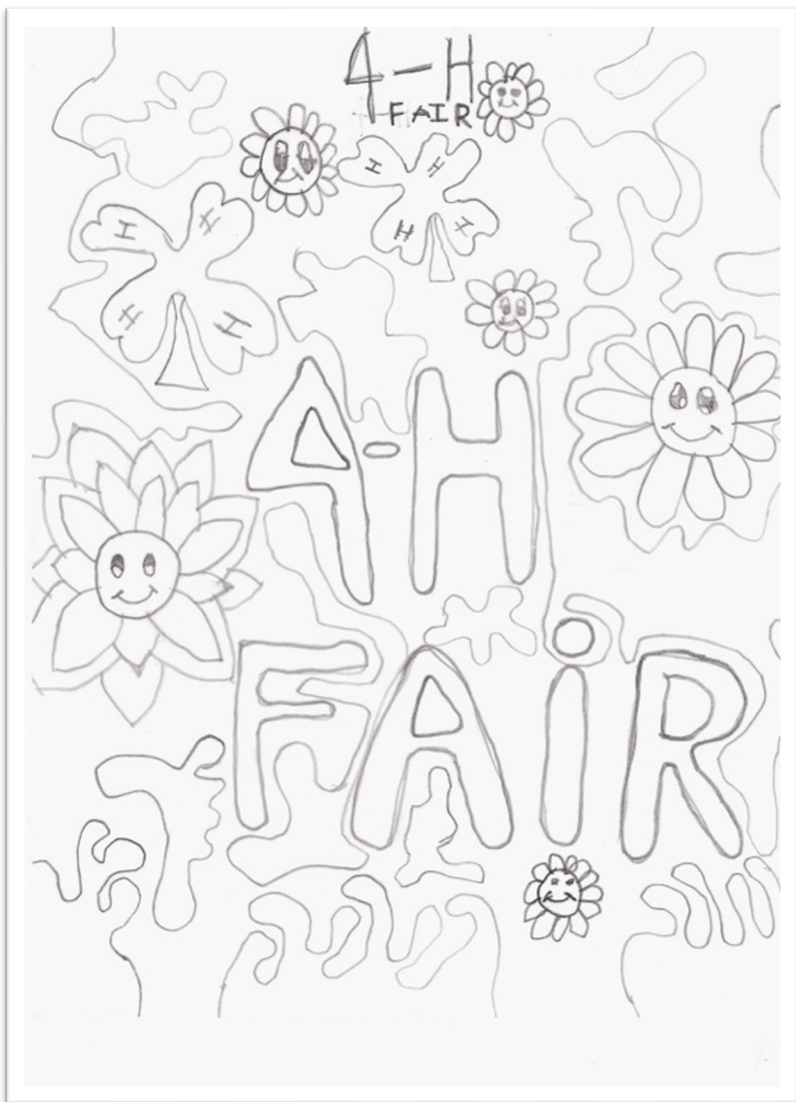
- **Club Exhibits**

- Each Club may make one exhibit or banner – contact Sarah Norris to reserve your space, electrical outlets, etc... Approximate space is 45” across
 - Set up – Wednesday, August 28th 6-8:30p
 - Pick up – Same as the rest of the Static Exhibits

- **Costume Parade**

- Includes both Children’s and the Animal Classes.
- Fun and OPEN contest (no Sweepstakes Points).
- Open to all Children and Animals (chickens, rabbits, goats, dogs, etc.) to dress up in costume.
- Ribbons will be given to all.
- Various categories – Most Original, Most Old Fashioned, Funniest, Cutest, etc..
- Contest will be held Sunday at 3pm.

Drawing by Leanna Roden



Records

100-1 Records to be judged

Arts and Crafts

All * items must be mounted and have the lot number on the back.

Art Work

101-102 Acrylic Portrait
101-103 Acrylic Landscape
101-104 Acrylic Still Life
101-105 Acrylic Waterscape
101-106 Acrylic Animal
101-107 Acrylic Abstract
101-108 Acrylic Pour Painting
101-109 Charcoal
101-110 Collage
101-111 Colored Pencil
101-112 Computer Generated
101-113 Crayon
101-114 Dot Painting on Canvas
101-115 Felt Marker
101-116 Mixed Media
101-117 Oil Portrait
101-118 Oil Landscape
101-119 Oil Still Life
101-120 Oil Waterscape
101-121 Oil Animal
101-122 Oil Abstract
101-123 Pastel
101-124 Pen and Ink
101-125 Pencil
101-126 Poster Paint
101-127 Painted Glass
101-128 Resin Art - Framed
101-129 Textile Paint
101-130 Watercolor Portrait
101-131 Watercolor Landscape
101-132 Watercolor Still Life
101-133 Watercolor Water Scape
101-134 Watercolor Animal
101-135 Watercolor Abstract
101-136 Unusual – does not fit categories listed

Pottery and Ceramics

101-137 Animals, group
101-138 Animals, single
101-139 Basket
101-140 Bowl
101-141 Charms
101-142 Figurine, group

101-143 Figurine, single
101-144 Human Figure, group
101-145 Mask
101-146 Mug
101-147 Planter
101-148 Vase
101-149 Unusual – does not fit into categories listed

Miscellaneous Crafts

101-150 Bead Work
101-151 Bead Picture
101-152 Bookmarks
101-153 Camp Crafts
101-154 Candles
101-155 Christmas Ornaments
101-156 Craft Stick Art
101-157 Decorated Boxes
101-158 Decorated Wood
101-159 Diorama
101-160 Dot Painted Crafts
101-161 Glass
101-162 Holiday Arts
101-163 Holiday Decorations
101-164 Jewelry – Bracelet
101-165 Jewelry – Earrings
101-166 Jewelry - Necklace
101-167 Leatherwork
101-168 Lego from a Kit
101-169 Lego not from a Kit
101-170 Macrame
101-171 Mask
101-172 Models from Kits
101-173 Models from Scratch
101-174 Multi Media Art
101-175 Native American Crafts
101-176 Nature Crafts
101-177 Paper Art
101-178 Patriotic Decoration
101-179 Picture Frame
101-180 Poster
101-181 Quilling
101-182 Resin Crafts
101-183 Sand Art
101-184 Scrapbooking
101-185 Seasonal Decorations
101-186 Shell Crafts
101-187 String Art
101-188 Tie Dye
101-189 Toys
101-190 Using Art for Education
101-191 Woodburning
101-192 Yarn Crafts
101-194 Unusual – does not fit in categories listed

Special Contest: 4-H Poster Contest

This is an opportunity for individuals to promote the projects in which they are enrolled. There is no limit on the number of posters that can be entered. The Danish system of judging will be used. A rosette will be awarded in each class.

101-201 Cloverbuds

101-202 Juniors

101-203 Seniors

Science & Nature

All collections must contain **at least 5 specimens**. Each specimen in the collections must be **labeled**.

103-101	Collection of Wild Flowers	103-109	Collection of Tree Bark
103-102	Collection of Edible Plants	103-110	Collection of Leaf Prints
103-103	Collection of Insects	103-111	Collection of Crystals - Homemade
103-104	Collection of Leaves	103-112	Collection of Crystals – from Nature
103-105	Collection of Seeds	103-113	Journal - Nature
103-106	Collection of Soil Samples	103-114	Recycled Item
103-107	Collection of Wood Samples	103-115	Miscellaneous
103-108	Collection of Herbs		



Drawing by Zoe Norris

S.T.E.M.

- 103-116 Posters, Models, Sketches and Drawings:
- | | |
|--------------|------------------------------------|
| A. Chemistry | D. Earth and Environmental Science |
| B. Biology | E. Astronomy and Space |
| C. Physics | F. Other |
- Poster should demonstrate scientific method and/or knowledge of subject**
- | | | | |
|---------|-------------------------------|---------|-----------------------------------|
| 103-117 | Miscellaneous Science Project | 103-121 | Math Origami |
| 103-118 | Model: Original | 103-122 | Invention, any materials |
| 103-119 | Model: from a Kit | 103-123 | Invention, from a kit |
| 103-120 | Sketches and Drawings | 103-124 | Robotics (can be Lego if robotic) |
- 103-125 Computer Programming and Technology, Digital Projects: Screen shot of digital project with Explanation of Process, mounted on 8.5 x 11 Cardstock – no frames please

Fleece Contest

All fleeces must be from sheep owned by the exhibitor and shorn in the spring of the current year. Fleeces should be in a clear plastic bag. Fleeces should be entered with the Static Exhibits on Wednesday evening. Ribbons and points will be awarded (no premiums).

Judging: cleanliness, uniformity of grade, color, crimp, staple length, fiber strength, and handle (feel). White fleeces should be free of colored fibers. "Second Cuts" result in fibers of less than full lengths are less desirable.

Lot:

White

104-101 Fine

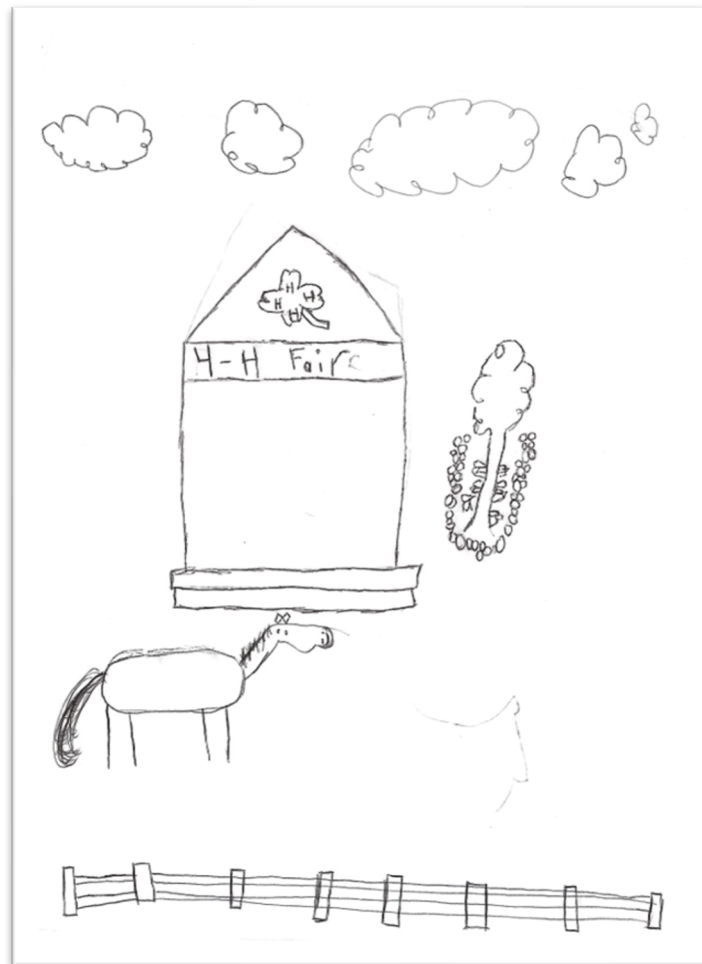
104-102 Medium

104-103 Coarse

Colored

101-104 Light Shaded

104-105 Dark Shaded



Drawing by Martin Swanson

Foods

- You may have as many entries per lot as you wish in the FOODS department only.
- All 4-Hers may exhibit any food prepared by them to be judged.
- All food exhibits will be sold in the Food Sale.
- You may exhibit as many different recipes as you wish in each lot.
- A **complete Recipe** – amount of all ingredients with mixing and cooking directions – must accompany each entry.
- Food must be entered on a paper plate and be covered securely with plastic wrap.
- Small items such as cookies, squares, muffins, rolls, etc. are judged on **plates of 6**. Any others can be wrapped separately to go to the Food Sales.
- Large items such as breads, cakes, and pies are judged as a single unit.
- No refrigerated items accepted.

105-101	Cookies	105-109	Quick Breads
105-102	Bar Cookies	105-110	Nutritious Snack
105-103	Frosted Cake (from scratch)	105-111	Cupcakes
105-104	Unfrosted Cake	105-112	Candy
105-105	Decorated Cake (may use mix)	105-113	Gluten Free from Scratch
105-106	Pies	105-114	Gluten Free from Mix
105-107	Muffins	105-115	Preserves
105-108	Sweet Breads	105-116	Brownies
		105-117	Micellaneous

Special Food Contest

These contests are open to all 4-Hers, leaders, and parents. A \$5.00 cash award will go to the winner in each contest in the Junior and Adult classes. These entries should be brought to the schoolhouse at the stated time for Food Exhibits. The products are to be sold at the Food Sale. Enclose the complete recipe. Cover securely with plastic wrap, except for preserves. 4-Hers entering this contest may use their points towards the Sweepstakes.

105-201	Cheese	105-204	Fudge, 1 pound
105-202	Apple/Fruit Pie	105-205	Preserves, 2 jars
105-203	Decorated Cake	105-206	Whoopie Pies



Horticulture Flowers

Collect the material in the evening or in the early morning. Place them for a few hours in deep water in a cool, draft free place. Blossoms should be uniform in size and in their prime. Display the number of blossoms indicated in each class. Avoid plant material with disease, insect, or spray injury.

All specimens must be raised by the exhibitor.

- | | |
|--|---|
| 106-101 Asters, 5 Blooms | 106-110 Petunias, 5 Sprays |
| 106-102 Calendulas, 5 Blooms | 106-111 Roses, Standard, 5 Stems |
| 106-103 Cosmos, 4 Sprays | 106-112 Roses, Mini, 5 Stems |
| 106-104 Dahlias, 5 Blooms | 106-113 Zinnias, 5 Blooms |
| 106-105 Gladioli, 5 Spikes | 106-114 Any Other Flowers, 5 Blooms/Stems |
| 106-106 Hydrangea, 3 Sprays | 106-115 Holiday Arrangement |
| 106-107 Marigolds, Large, 5 Stems | 106-116 Garden Flower Bouquet |
| 106-108 Marigolds, Small, 5 Stems | 106-117 Wildflower Arrangement |
| 106-109 Nasturtium, 5 Sprays | 6 different with list of names |
| 106-118 Wreath & Swag – cones, herbal, evergreen | |

Indoor Plants

- | | |
|--------------------------|--|
| 106-201 African Violet | 106-206 Hanging Flowering Plant |
| 106-202 Begonia | 106-207 Hanging Foliage Plant |
| 106-203 Cacti | 106-208 Any Other Potted Plant |
| 106-204 Christmas Cactus | 106-209 Dish Garden |
| 106-205 Hanging Plant | 106-210 Terrarium – in a fish bowl type with 2
Or more plants |

Outdoor Container Gardens

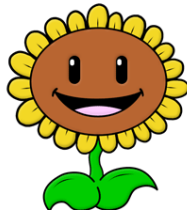
- | | |
|---|--|
| 106-301 Outdoor Flowers in a Medium Container 2 Gallons or less | |
| 106-302 Outdoor Flowers in a Large Container over 2 Gallons | |
| 106-303 Window Box Garden | |
| 106-304 Herb Garden | |
| 106-305 Edible Garden | 106-307 Miscellaneous Container Garden |

Special Contests

- | | |
|---|--|
| 106-401 Sunflower, Tallest | |
| 106-402 Sunflower, Biggest Head | |
| 106-403 Pumpkin, Largest | |
| 106-404 Squash, Longest | |
| 106-405 Squash, Heaviest | |
| 106-406 Vegetable Creation – Create your
favorite person, place, or thing put on a paper
plate and label as to whom, where, or what | |

**These 3 contests are open to all 4-Hers, leaders, and parents
Judged in 2 classes – 4-Hers and Adults**

- | |
|--|
| 106-407 Tea Time – Arrangement in a Tea Pot, Tea Cup
or Mug |
| 106-408 Kitchen Favorite - Arrangement in or including a
kitchen utensil – not over 10x10 |
| 106-409 Fairy Garden |



Vegetables

Specimens should be clean and free from blemishes. Specimens should be similar in size, shape, and color. They should not be too large or too small. They should be at their peak of perfection for eating. Display them on paper plates with the plates with the number of specimens indicated in each lot. *All specimens must be raised by the exhibitor.*

- 107-101 Beans – Green, 10 pods
- 107-102 Beans – Yellow, 10 pods
- 107-103 Beans – Purple , 10 pods
- 107-104 Beans – Pole, 10 pods
- 107-105 Beans – Shell, 10 pods
- 107-106 Beets – Remove top and leave 1 inch stem, 5 specimens
- 107-107 Cabbage – 1 Head
- 107-108 Carrots - Remove top and leave 1 inch stem, 5 specimens
- 107-109 Corn – Sweet, 5 specimens Husked
- 107-110 Corn – Indian, 5 specimens Husked
- 107-111 Cucumbers – Standard, 2 specimens
- 107-112 Cucumbers – Pickling, 2 specimens
- 107-113 Cucumbers – English, 2 specimens
- 107-114 Eggplant – Purple, 2 specimens
- 107-115 Eggplant – Miscellaneous, 2 specimens
- 107-116 Gourds, 3 specimens
- 107-117 Herbs, 3 specimens
- 107-118 Onions, 5 specimens
- 107-119 Peppers – Green, Orange, Yellow, Red Bell Type, 2 specimens
- 107-120 Peppers – Banana, Sweet Italian, 5 specimens
- 107-121 Peppers – Hot Red, 5 specimens
- 107-122 Peppers – Hot Green, 5 specimens
- 107-123 Potatoes – 5 specimens
- 107-124 Pumpkins – 2 specimens
- 107-125 Radishes – 10 specimens
- 107-126 Squash – Summer Zucchini, 2 specimens
- 107-127 Squash – Summer Yellow, 2 specimens
- 107-128 Squash – Winter, 2 specimens
- 107-129 Squash – Unusual Shape, 2 specimens
- 107-130 Tomatoes – Cherry, Green, 5 specimens
- 107-131 Tomatoes – Cherry, Red, 5 specimens
- 107-132 Tomatoes – Plum, Green, 5 specimens
- 107-133 Tomatoes – Plum, Red, 5 specimens
- 107-134 Tomatoes – Green, 5 specimens
- 107-135 Tomatoes – Red, 5 specimens
- 107-136 Tomatoes – Unusual Color, 5 specimens
- 107-137 Vegetable Arrangement – Harvest Bounty 5 or more vegetables artistically arranged in a container
- 107-138 Miscellaneous vegetable
- 107-139 Melons (whole)

Handwork

The top three blue ribbon entries in the * classes will receive premiums of \$8, \$6, and \$4.

108-101	Counted Cross Stitch	108-113	Knitted Afghan*
108-102	Crocheted Accessories	108-114	Latch Hook Item
108-103	Crocheted Afghan*	108-115	Needle Felted - Woodland Animal
108-104	Crocheted Miscellaneous	108-116	Needle Felted – Ocean Animal
108-105	Crocheted Garment*	108-117	Needle Felted – Farm Animal
108-106	Embroidered Item	108-118	Needle Felted – Plant
108-107	Handwork Miscellaneous	108-119	Needle Felted Holiday Decoration
108-108	Handspun Wool Yarn	108-120	Needle Miscellaneous
108-109	Handspun Miscellaneous Fibers	108-121	Wet Felted Item
108-110	Knitted Accessories	108-122	Woven Garment
108-111	Knitted Garment*	108-123	Woven Accessory
108-112	Knitted Miscellaneous	108-124	Woven Miscellaneous

Sewing

109-101	Shirt, Blouse	109-112	Apron
109-102	Pants	109-113	Sewed Accessories
109-103	Shorts	109-114	Hats
109-104	Skirt	109-115	Home Décor
109-105*	Suit	109-116	Flags
109-106*	Dress	109-117	Stuffed Toy
109-107	Jumper	109-118	Bag
109-108	Vest	109-119	Doll Clothes
109-109*	Party Gown	109-120	Toys
109-110*	Coat Jacket	109-121	Sewing Miscellaneous
109-111	Sleepwear	109-122	Notebook of Construction Techniques (hems, seams, etc.)

Quilting

109-123	Lap Quilt Pieced - Tied	109-128	Quilt, Pieced, Machine - Queen or King
109-124	Lap Quilt Pieced – Machine	109-129	Pillow – Machine Quilted
109-125	Quilt, Pieced, Tied – Twin or Full	109-130	Stocking – Machine Quilted
109-126	Quilt, Pieced, Tied - Queen or King	109-131	Wall Hanging - Paper Pieced
109-127	Quilt, Pieced, Machine – Twin or Full	109-132	Wall Hanging – Machine Quilted
		109-133	Unusual – Does not fit into any category

Place the following letter of the quilting techniques used next to the class number on the entry form:

N- first quilt

The top three blue ribbon entries in the * classes will receive premiums of \$8, \$6, and \$4.

Please note: Quilts and Afghans must be at least twin size or larger.

Horse

110-101 Breed Project – check with your leader for requirements

Horse Lovers

110-102 Horse Lovers Notebook – check with your leader for requirements.

Visual Presentations

Sign up when you enter Wednesday or Thursday nights or at 10am on Saturday in the schoolhouse. You will be notified when and where you will do your presentation. Ribbons awarded by the Danish System. A rosette will be awarded for each class.

112-101 Cloverbuds

112-102 Juniors

112-103 Seniors

Photography

Rules:

- Open to all members from East Middleboro. There is a Junior and Senior Divisions.
- Limited to photographs taken in the past year.
- You may enter up to 5 photographs from different categories of which a maximum of 3 may be from the color class.
- Only 1 photograph per category/class may be entered.
- All photographs must be unmounted, no smaller than 4x6".
- Each entry is to be submitted in clear sheet protector. Please put the tag in the sheet protector.
 - Include: Title of Photo as well

Objective:

- To encourage 4-H members to use photography as a meaningful communication tool in their lives.
- To be proud of their accomplishments.

Judging Criteria:

- Composition – is the pleasant arrangement of elements within a frame, which can give the most powerful ability to attract the eye.
- Lighting – the use and control of light whether manmade or natural, refers to how dimension, shape and roundness are defined in an image.
- Impact – is the sense one gets upon viewing an image where the maker wants the viewer to stop.

Black and White Photos

111-101 **Pets** - any domesticated animal in any setting or circumstances

111-102 **Farming & Gardening** - anything related to the landscape of farms and gardens including farm

111-103 **Scenic** - any outdoor scene, landscape or cityscape where there is a strong emphasis on light and composition

111-104 **4-H Activity** – any activity relating to 4-H or your 4-H project(s).

111-105 **People** – any photo that focuses on a person or persons

111-106 **Wildlife** - any animal in nature including bird, insects, reptiles, mammals

111-113 **Still life** – any arrangement of inanimate objects, emphasis on light and composition

Color Photos

111-107 **Pets** - any domesticated animal in any setting or circumstances

111-108 **Farming & Gardening** - anything related to the landscape of farms and gardens including farm

111-109 **Scenic** - any outdoor scene, landscape or cityscape where there is a strong emphasis on light and composition

111-110 **4-H Activity** – any activity relating to 4-H or your 4-H project(s).

111-111 **People** – any photo that focuses on a person or persons

111-112 **Wildlife** - any animal in nature including bird, insects, reptiles, mammals

111-114 **Still life** – any arrangement of inanimate objects, emphasis on light and composition



Woodworking

Scroll Sawing

113-101	General Fret Work	113-109	Lawn Ornament
113-102	Appliqués and Overlays	113-110	Toy
113-103	Segmentation	113-111	Puzzle
113-104	Intarsia	113-112	Clock
113-105	Incise-Carving	113-113	Relief Project
113-106	Inlay Project	113-114	Baskets
113-107	Compound-3D Project	113-115	Vases/Bowls
113-108	Silhouette	113-116	Fret Work Shelf

Carving

113-118	Bird	113-120	Caricature Carving
113-119	Relief Carving	113-121	Miscellaneous Carving

General

113-122	Bird House	113-130	Cutting Board
113-123	Stool	113-131	Bat House
113-124	Bookcase	113-132	Small Furniture Piece
113-125	Shelves	113-133	Jigsaw Puzzle
113-126	Magazine Rack	113-134	Clock Restoration
113-127	Plaques	113-135	Woodturning
113-128	Jewelry Box	113-136	Furniture - General
113-129	Storage Box	113-137	Furniture – Restoration
		113-138	Miscellaneous



Drawing by Ryan Smith

Animals

****** Animal Exhibitors must submit up-to-date PROJECT RECORD when entering animals******

Completed entry forms must be received by **August 14th**.

Livestock Entries: Brenda Easter, 501 Prospect Hill St., Raynham, MA 02767

Poultry Entries: Brenda Easter, 501 Prospect Hill St., Raynham, MA 02767

Dog Entries: Christine Hoyt, 34 Cedar Crest Dr., Bridgewater, MA 02324

Rabbit Entries: Brenda Easter, 501 Prospect Hill St., Raynham, MA 02767

General Rules

1. To show animals in East Middleboro an exhibitor must be a member in good standing of a 4-H club and **must** present a project record for the animal being shown.
2. Animal health regulations will be maintained. All animals entered at the Fair will be examined at entry time for visible evidence of infectious or contagious diseases. Evidence of disease will result in the animal's rejection for entrance. Inspector's decision is final. All required tests must be made in the name of the current owner or exhibitor. Rabies inoculations are strongly recommended for all beef, dairy, goats, and sheep. Remember to bring your health certificates. You must have all current health records even if animals are not being shown. If you have any questions – call your leader!
3. ALL animals must be pre-registered to reserve pen space by August 14th.
4. No one but exhibitors will be permitted to work on animals. Violations may result in disqualification.
5. Exhibitors are responsible for the care and feeding of their animals during the Fair.
6. All animals are to remain on the grounds until Sunday or prize money will be forfeited.
7. All animal exhibitors must be on the grounds by 8am Sunday. All animals will be released at the closing of the Fair.
8. Each club will be responsible for cleaning out its own area: pens, cages, bedding, and manure. All exhibitors and parents are asked to assist in cleaning the grounds to help take down tents.
9. All sheep and goats must comply with the Scrapie Program.
10. All Cloverbuds will receive ribbons for their participation.
11. All 4-H members are expected to abide by the Dress Code.
12. All entries must be accompanied with an up-to-date project record.
13. Entry forms must be filled out completely. Note there are separate entry forms for animals and rabbits. Livestock, rabbit, and dog entries must be received by **August 18th**.
14. **Selling of animals is allowed for 4-H youth members only.** In the teaching of proper practices and to help with the member's record keeping a Bill of Sale must be filled out. This will be provided by the East Middleboro Fair; it will be a triplicate – one for the buyer, one for the 4-Her, and one that will remain in the book so if misplaced the 4-H member can get a copy for their records. **All monies made go to the 4-H member.**

Premiums for Animal Classes:

Department	Premiums			Classes for which Premiums are Paid
Beef	\$20	\$15	\$10	Fitting, Showmanship
Cat	\$15	\$10	\$8	Fitting/Showmanship
Dairy	\$20	\$15	\$10	Fitting, Showmanship
Dog	\$15	\$10	\$8	Fitting/Showmanship, Obedience
Goat (Dairy)	\$15	\$10	\$8	Fitting, Showmanship
Goat (Other)	\$15	\$10	\$8	Fitting, Showmanship
Poultry	\$5	\$4	\$3	All Classes Listed in this Fair Book
Rabbits	\$5	\$4	\$3	All Classes Listed in this Fair Book
Cavies	\$5	\$4	\$3	All Classes Listed in this Fair Book
Sheep	\$15	\$10	\$8	Fitting, Showmanship
Swine	\$15	\$10	\$8	Fitting, Showmanship

Premiums are dependent upon the success of the Fair and may be prorated. Ribbons and Sweepstakes Points will be awarded for all classes. Premiums will be presented at Achievement Night in the fall.

BEEF: Animals must be in member's name by May 1 of the current year.

Fitting:

201-70 Cloverbud

201-71 Novice

201-72 Junior

201-73 Senior

All breed classes will be divided by breed. Age as of July 1 of the current year.

Female:

201-A Under 6 Months

201-B Over 6 Months

201-C Over 1 Year

201-D Cow and Calf, Any Age

Showmanship:

201-80 Cloverbud

201-81 Novice

201-82 Junior

201-83 Senior

Market:

201-E Under 6 Months

201-F Over 6 Months

201-G Over 1 Year

DAIRY: Animals must be in member's name by May 1 of the current year.

Fitting:

202-70 Cloverbud

202-71 Novice

202-72 Junior

202-73 Senior

All breed classes will be divided by breed. Age as of July 1 of the current year.

Female:

202-A Under 6 Months

202-B Over 6 Months

202-C Over 1 Year

202-D Cow and Calf, Any Age

Showmanship:

202-80 Cloverbud

202-81 Novice

202-82 Junior

202-83 Senior

Market:

202-E 2 Year Old

202-F 3 Year Old or Older



DOG

Send dog entries to: Christine Hoyt 34 Cedar Crest Dr., Bridgewater, MA 02346 by August 15th.

1. 4-Hers themselves must have trained the dogs for 3 months to be entered in the classes.
2. The entered dog must have been cared for by the 4-Her at least 90 days prior to the show and have up-to-date health certificates.
3. Members may enter each dog in an obedience class. There will be fitting and showmanship classes, as well as a costume class.
4. A written dog knowledge test will be given.

Obedience

203-0 Cloverbud

- 203-1 **Pre Novice A** Novice handlers and novice Dogs
Pre Novice B Open to experienced handlers who have previously finished a dog at novice or Above starting with a new dog (All on Leash)
- A. Heel on leash and figure 8 B. Stand for examination C. Recall
D. Long Sit (1 minute) E. Long Down (3 minutes)

- 203-2 **Novice A** Open to any dog ready for off-leash work, which has not yet achieved a CD
- A. Heel on leash and figure 8 B. Stand for examination C. Heel Free
D. Recall E. Long Sit (1 minute) F. Long Down (3 minutes)

- 203-3 **Novice B** For CD dogs with new handlers, or dogs shown by handlers who have finished a dog at the novice level. Same routine as Novice A.

- 203-4 **Graduate Novice**
- A. Heel on leash B. Stand for examination C. Heel Free and Figure 8
D. Drop in Recall E. Long Sit (3 min out of sight) F. Long Down (5 min out of sight)

- 203-5 **Open A**
- A. Heel on leash and Figure 8 B. Drop in Recall C. Retrieve on flat
D. Long Down (5 min out of sight) E. Retrieve over high jump F. Broad Jump

- 203-6 **Open B** For CD dogs with handlers who have previously finished a dog at the open level or new handlers working dogs, which have received a CDX

- 203-7 **Graduate Open** For dogs and handlers who have achieved a CDX but not yet working at utility level.

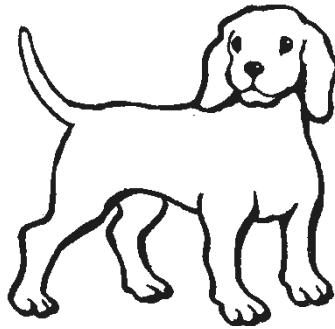
- 203-8 **Utility**
- A. Signal Exercise B. Scent Discrimination (leather and metal) C. Directed Retrieve
D. Directed Jumping E. Moving Stand and Examination

Dog Fitting and Showmanship

203-70	Cloverbud, 5-7 years	
203-71	Novice Junior, 8-13 years – First Year Exhibitor	
203-72	Novice Senior, 14-18 years – First Year Exhibitor	
203-73	Junior, 8-13 years	} 2 nd year or higher exhibitors who have not won 3 first place ribbons in 4-H or AKC
203-74	Senior, 14-18 years	
203-75	Advanced Junior, 8-13 years	} exhibitors who have won 3 first place ribbons in Junior Class or Senior Class are showing Open AKC
203-76	Advanced Senior 14-18 years	

Dog Knowledge

203-91	Cloverbud	203-92	Novice	203-93	Junior	203-94	Senior
--------	-----------	--------	--------	--------	--------	--------	--------



Dog Agility

203-96

Cloverbud

203-97

Novice – First time agility handlers who haven't competed in any agility contest. This will be done on leash with the only time the handler drops the leash is at a tunnel. Once dog wins 3 of the same game (with competition) at the novice level they must move up to the open level.

203-98

Open – For those who have done an agility course before or are off leash in obedience. This will be done either off leash or with a tab style lead. Upon winning 3 of the same game at the open level, they must move up to the advanced level.

203-99

Advanced – Is done off leash only for those who either compete in agility or have won 3 open level contests.

Dog Rally Trial

203-100

This year we are adding a rally trial. This will be a learning experience, not competitive. It will be a chance to learn new skills and enjoy a fun activity.

Cloverbud

Novice Junior

Novice Senior

GOATS: Animals must be in member's name by June 1 of the current year. All goats must comply with the Scrapie Program.

DAIRY GOATS:

Fitting:

204-70 Cloverbud
204-71 Novice
204-72 Junior
204-73 Senior

Showmanship:

204-80 Cloverbud
204-81 Novice
204-82 Junior
204-83 Senior

Breed:

204-A Kid, 1-6 Months
204-B Kid, 7-12 Months

204-C Yearling
204-D 2-5 Year Old Milker
204-E 5 Year and Over Milker

ALL OTHER GOATS: will be separated by breed

Fitting:

205-70 Cloverbud
205-71 Novice
205-72 Junior
205-73 Senior

Showmanship:

205-80 Cloverbud
205-81 Novice
205-82 Junior
205-83 Senior

Breed: *classes will be divided by breed*

204-A Kid, 1-6 Months
204-B Kid, 7-12 Months

204-C Yearling
204-D 2-5 Year Old Milker
204-E 5 Year and Older Milker

SHEEP: Animals must be in member's name by June 1 of the current year. Members will be limited to two animals per class. Rams will be brought only on Show Day. No rams will be allowed to stay on the grounds. All sheep must comply with the Scrapie Program.

Fitting:

206-70 Cloverbud
206-71 Novice
206-72 Junior
206-73 Senior

Showmanship:

206-80 Cloverbud
206-81 Novice
206-82 Junior
206-83 Senior

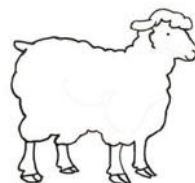
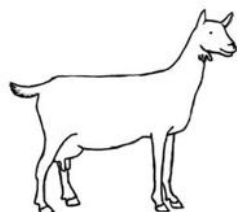
Market Lambs: *these lambs are not shown in any other Breed Class*

206-1 A. Light B. Medium C. Heavy

Breed Classes: *All breed classes will be divided by breed. All breeds accepted. Please be sure to list breed on entry form.*

206-2 Ewe Lamb
206-3 Yearling Ewe
206-4 Aged Ewe
206-5 Ram Lamb
206-6 Yearling/Aged Ram

206-7 Flock – 3 Ewes
206-8 Pairs – Ewe Lambs
206-9 Pairs – Yearling Ewes
206-10 Pairs – Ram Lambs



SWINE: Animals must be in member's name by June 1 of the current year.

FITTING:

207-70 Cloverbud
207-71 Novice
207-72 Junior
207-73 Senior

SHOWMANSHIP:

207-80 Cloverbud
207-81 Novice
207-82 Junior
207-83 Senior

GILTS:

207-1 Light, April 1 and after
207-2 Medium, Feb.15 – Mar. 31
207-3 Heavy, Jan. 1-Feb. 15

MARKET:

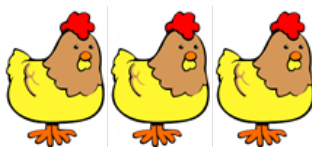
207-4 Light, April 1 and After
207-5 Medium, Feb. 15-Mar. 31
207-6 Heavy, Jan. 1 – Feb. 15



POULTRY: - : Members will be limited to 10 entries for judging. All birds must be owned by the exhibitor prior to August 1st of the current year. **ALL BIRDS WILL BE INSPECTED ON ENTRY FOR HEALTH AND CLEANLINESS.** **Poultry Entries: Brenda Easter, 501 Prospect Hill St., Raynham, MA 02767**

Serama – Table Top

- | | |
|-----------------------------|---|
| 208-1 Bantams | 208-7 Goose |
| 208-2 Standard (Exhibition) | 208-8 Turkey |
| 208-3 Standard (Production) | 208-9 1 Dozen Chicken Eggs – Uniform in Size & Color |
| 208-4 Back Yard Birds | 208-10 ½ Dozen Multi Color Chicken Eggs |
| 208-5 Duck Standard | 208-11 Chicken Painting on a Canvas – Use your imagination! |
| 208-6 Duck Bantam | 208-12 Educational Poster – “Caring for your Poultry” |
-
- | | | | | |
|--------------------|-----------|-----------------|-----------|--|
| 208-13 Showmanship | | | | |
| A. Cloverbud | B. Novice | C. Intermediate | D. Senior | |



RABBITS and CAVIES:

1. Any rabbits showing signs of disease will be removed from the Fair grounds by the Chairperson of the Rabbit/Cavy Department.
2. Members will be limited to 10 rabbits per exhibitor for judging.
3. Rabbits must be in the member's name by June 1st of the current year.
4. *All exhibitors must groom, carry, and show rabbits themselves.*
5. All rabbit exhibitors must follow the code of conduct rules throughout the Fair.

Mail Rabbit Entries: Brenda Easter, 501 Prospect Hill St, Raynham, MA 02767 by August 14th.

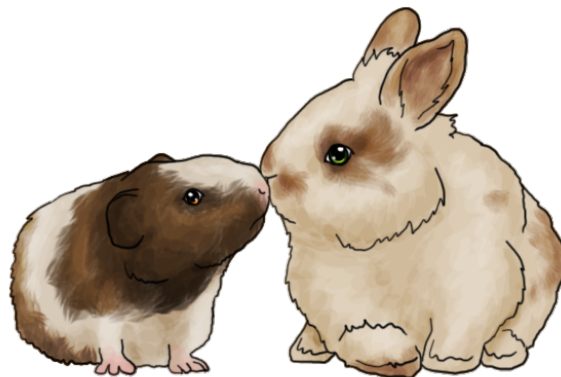
Rabbits:

209-1 Senior Buck	209-6 Junior Doe
209-2 6-8 Month Buck	209-7 Best Fur (Over All)
209-3 Junior Buck	209-8 Doe and Litter
209-4 Senior Doe	209-9 Pet Class
209-5 6-8 Month Doe	
209-10 Showmanship - Novice	
209-11 Showmanship - Intermediate	
209-12 Showmanship - Advanced	

Cavies:

210-1 Senior Boar	210-5 Junior Boar
210-2 Senior Sow	210-6 Junior Sow
210-3 Intermediate Boar	210-7 Pet Class
210-4 Intermediate Sow	
210-10 Showmanship - Novice	
210-11 Showmanship - Intermediate	
210-12 Showmanship - Advanced	

CO – Coronet	PA – Peruvian	PES – Peruvian Satin
SI – Silkie	SIS – Silkie Satin	TE – Teddy
TIS – Teddy Satin	TEX – Texel	WNC – White Crested
AB – Abyssinian	ABS – Abyssinian Satin	AM – American
AMS – American Satin		



Outstanding Community Service Award

This award is presented to an East Middleboro 4-H Club, which has been outstanding in providing services to the community and to the East Middleboro 4-H activities. The club will be presented a fifty-dollar check at the Achievement program in the fall. The club's name will be engraved on a plaque in the schoolhouse. The application includes the member's names, ages, projects carried, a description of all services provided from last October 1st to September 30th of the current year and photos, news clippings, letters of appreciation, or signed forms from the recipients. Applications must be submitted by October 1st of the current year. Forms may be obtained at the East Middleboro 4-H schoolhouse.

Outstanding Junior Leader Award

This award is to be presented to an East Middleboro 4-H junior leader who has been outstanding in providing service to his/her club, the community, and to the East Middleboro 4-H activities. The award will be presented at the Achievement program in the Fall. The Junior Leader's name will be engraved on a plaque in the schoolhouse. The nominations must be submitted by the club leader by October 1st. Forms will be available at the 4-H schoolhouse.

Arthur Standish Memorial Award

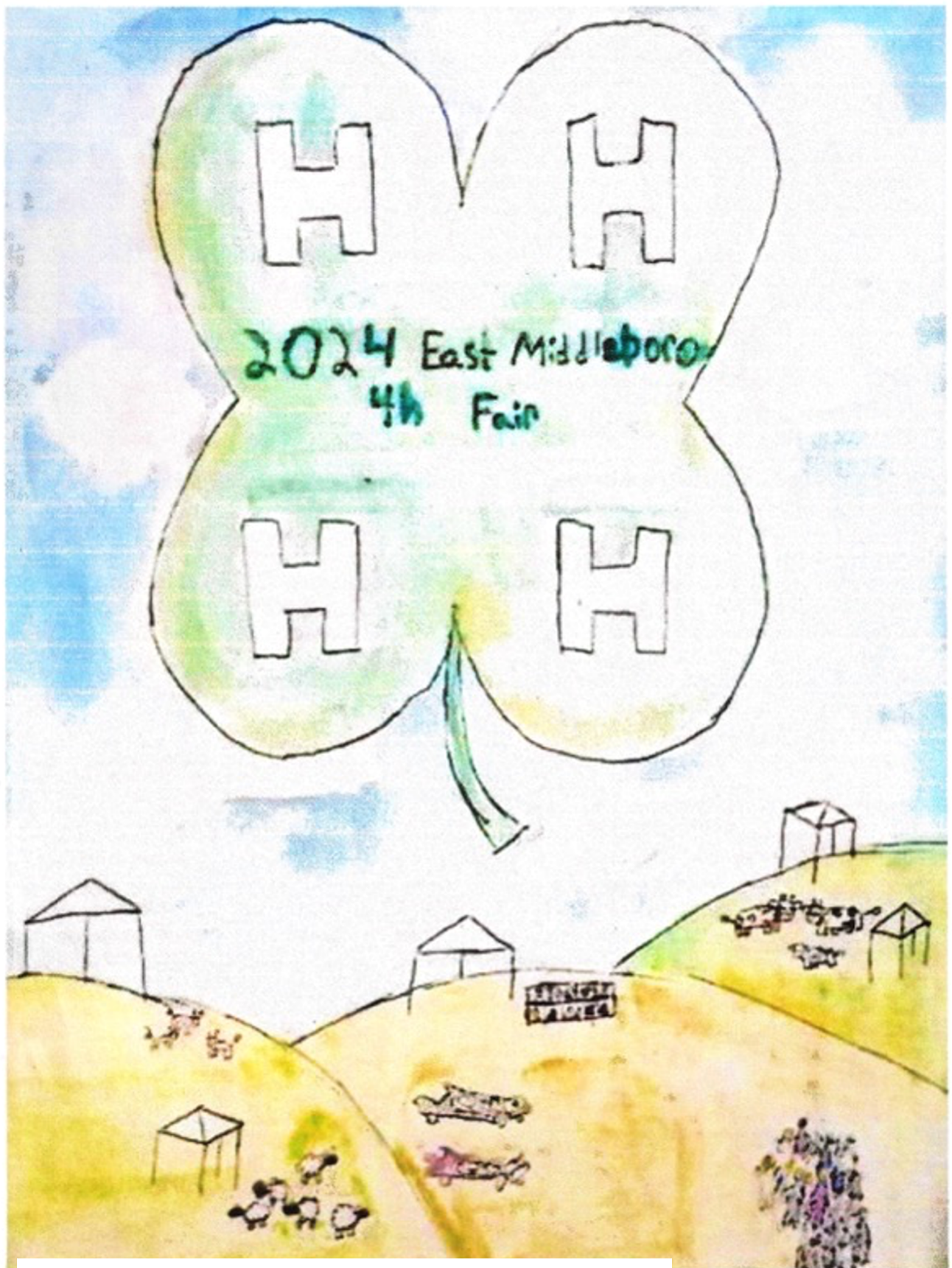
This award is open to all clubs in East Middleboro 4-H. Clubs are encouraged to decorate an area, if your club does not have a tent or area for your project, the East Middleboro Fair committee will designate an area for you to decorate and inform the public about your club. The Outstanding Club Display will receive recognition at the awards night in the Fall and their club name will be placed on the Memorial plaque in the schoolhouse.

East Middleboro 4-H Fair Book Cover Contest

This contest is open to all 4-H members in East Middleboro Clubs. The drawing must be in black ink on an 8 ½ x 11 inch piece of paper. The drawing must be an original design and incorporate 4-H and the Fair. All drawings must be received by the 3rd Tuesday in March for the Annual Meeting of the East Middleboro 4-H Community Committee.

2024 Artist submissions:

- **Addison Lenaue – Fairbook cover**
- Emily Bloch
- Allison Kesig
- Leianne Laine
- Zoe Norris
- Leana Roden
- Ryan Smith
- Martin Swanson



Drawing by Leianne Laine