

# 71st Annual East Middleboro 4-H Fair

4-H Grounds, 183 Thompson St. (Route 105), Middleboro, MA 02346

Saturday, September 3rd 2022


8am-6:30pm

Sunday, September 4th, 2022

8am-5:30pm



Check out our website: [eastmiddleboro4h.org](http://eastmiddleboro4h.org) and

Facebook  at: e middleboro 4-h

*This Fair is dedicated to the following individuals who give of themselves to help the youth of 4-H*

**In Memory of  
Nancy (Newcomb) Joy**

It is a great honor to be able to dedicate the 2021 Fair to Nancy Joy.

Let's remember Nancy (Newcomb) Joy as she was a club member, a leader, a member of the East Middleboro 4-H Community Committee and Plymouth County 4-H.

Nancy graduated from Cape Cod School of Nursing in the early 60's. She then married and built a home in Halifax, and it became her small farm.

As a horse club leader of the Pegasus Horse Club she formed a honor drill team which was the first riding team in Plymouth County. They were in many shows and parades. She then became a sheep leader and livestock leader.

Nancy was a very active member in the East Middleboro 4-H Community Committee and volunteered for many activities at our wonderful East Middleboro 4-H Fair.

Let us remember her for the years of dedication to 4-H.



Head – Heart – Health and Service



## TABLE OF CONTENTS

General Fair Background .....	4
4-H Clubs and Leaders .....	4
Junior Leaders .....	5
East Middleboro 4-H Community Committee .....	5
The Fabulous Fifties .....	5
Fair Schedule .....	6
Dress Code .....	7
Age Classification .....	7
Record Requirements .....	7
Exhibitor Requirements .....	7
Enrollment 2019-2020 .....	7
Project Entry Information .....	8
Award Information .....	8
Club Exhibits .....	9
Costume Parade .....	9
Static Entry Categories .....	10-17
Records .....	10
Arts and Crafts .....	10
4-H Poster Contest .....	10
Science and Nature .....	11
S.T.E.M. .....	11
Fleece Contest .....	11
Foods .....	12
Special Food Contests .....	12
Flowers .....	13
Indoor Plants .....	13
Outdoor Container Gardens .....	13
Special Contests .....	13
Vegetables .....	14
Handwork .....	15
Sewing .....	15
Quilting .....	15
Horse .....	15
Visual Presentations .....	15
Photography .....	16
Woodworking .....	17
Animal Entry Categories .....	18-23
General Rules and Premiums .....	18
Beef .....	19
Dairy .....	19
Cat .....	20
Dog .....	21-22
Goats .....	23
Sheep .....	23
Swine .....	24
Poultry .....	25
Rabbits and Cavy .....	25
Various Awards .....	26
Scholarships .....	27
<b>Entry Form .....</b>	<b>See Website: <a href="http://emiddleboro4h.org">emiddleboro4h.org</a></b>

## The 4-H Pledge

I pledge my **HEAD** to clearer thinking.  
My **HEART** to greater loyalty.  
My **HANDS** to larger service.  
My **HEALTH** to better living, for my  
Club, my community, my country, and my world

### GENERAL INFORMATION

4-H is the largest out-of-school educational youth program in the world. The 4-H Youth and Family Development Program (known simply as 4-H) is a program of the United States Department of Agriculture, the University of Massachusetts, Amherst, and the County Government. At the local level the clubs are led by qualified, adult volunteer leaders. The East Middleboro 4-H organization has grown throughout its sixty years. The East Middleboro 4-H Community Committee is made up of leaders, junior leaders, and former leaders; This group was organized in 1950, and assists in the maintenance of the school house and grounds, helps in many ways during the Fair and sponsors a scholarship for East Middleboro 4-H youth going on to school whose family has contributed time and effort to East Middleboro 4-H.

### 2020-2021 East Middleboro 4-H Clubs and Leaders

<b>Baking</b>	Eric Easter	<b>Livestock</b>	Individual
<b>Cloverbud</b>	Brenda Easter	<b>Poultry</b>	Jackie Freitas Dave Anderson
<b>Crafts</b>	Leigh Long Brenda Easter	<b>Quilting</b>	Janice Strojny Brenda Easter
<b>Dogs</b>	Christine Hoyt	<b>Rabbits</b>	Susan and Don Blauss
<b>Gardening</b>	Brenda Easter Marlene Peters	<b>Science</b>	Heather Kundzicz Carlos Fragata
<b>Homesteading</b>	Lori Tunewicz-Gavin Jeanne Gomes		

## **Junior Leaders**

Gwen Easter

Ty Gavin

Samantha Long

## **The East Middleboro 4-H Community Committee**

Membership includes all leaders, junior leaders, and the following volunteers:

Joe & Sheryl Amaral

Bill LaCroix

Jackie Angers

Stacy Leary

Susan Shields

Gwendy Blanchard

Bonnie Soule

Hilda Buck

Betty Powell

Bill Strojny

Sandra Wetteland

Jill Hay

Diane Phillips

Dave Davenport

Jeanne Lothrop

Charlie & Peg Chace

Laura Anderson

Mike Chapin

Stephanie and ChaChi Loprete

## **The Fabulous Fifties**

The Fabulous Fifties is an adult social/booster group dedicated to the support of East Middleboro 4-H club work. Organized in 1950, the group remains open to ANY adult with an interest in our 4-H youth and their activities. The members assist in the maintenance of the school house and help in many ways during the Annual East Middleboro 4-H Fair. A scholarship for an East Middleboro 4-H youth who is going on to higher learning is also sponsored by this group.

## **The East Middleboro 4-H Fair**

The annual Fair is sponsored and presented solely by the East Middleboro Community Committee, friends, and East Middleboro 4-H members to allow the 4-Hers to present their project work to the public, raise funds to sustain local 4-H programs and to provide a social activity for the community. Projects to be exhibited are as follows:

Arts

Foods

Rabbits and Cavies

Beef

Gardening

Science and Nature

Child Care

Goats

Sewing

Crafts

Handwork

Sheep

Dairy Cattle

Horse & Horse Lovers

Spinning

Dog

Poultry

Swine

Fashion Review

Photography

Tractor

Fishing

Quilting

Woodworking

## 2022 East Middleboro 4-H Fair Schedule

<b>Wednesday</b>	<b>August 31<sup>st</sup></b>	6:00-8:30pm	Non-Perishable and Club Exhibits
<b>Thursday</b>	<b>September 1<sup>st</sup></b>	6:00-7:30pm	Foods, Flowers & Vegetable Exhibits ONLY
<b>Saturday</b>	<b>September 3<sup>rd</sup></b>	by 7:30am	All Animal Exhibits Arrive

***Insurance Animal Waiver Form must be signed and turned in***

<b>Saturday</b>	<b>September 3<sup>rd</sup></b>		
	8am	Fair Opens	
		Country Store Opens	
	<b>8am-11am</b>	<b>Breakfast Served</b>	
	9:30am	Rabbit Show – Rabbit Tent	
	9:45am	Welcoming Ceremony	
		Registration for Open Cribbage Tournament	
	10:30a-1:30p	Agility Trial	
	10am	Open Cribbage Tournament	
	12:00pm	Swine Show – Pole Barn	
	1:30pm	Poultry Showmanship	
	2:45pm	Scholarship Recognition	
	<b>3pm-6:30pm</b>	<b>Auction</b>	
	6:30pm	Fair Closes	

<b>Sunday</b>	<b>September 4<sup>th</sup></b>		
	8am	Non-Denominational Worship Service and Blessings of the Animals	
	9:00am	Registration for Briggs Memorial Horseshoe Tournament	
	<b>9am-11am</b>	<b>Breakfast Served</b>	
	10:00am	Dog Show	
	11:30am	Goat Show	
	12pm	Sheep Show	
	1:30pm	Beef and Dairy Show	
	2pm	Visual Presentations	
	2:30pm	Sunflower Contest Results	
	3pm	Open Children's and Animal Costume Parade	
	5:30p	Animals Released	

<b>Monday</b>	<b>September 5<sup>th</sup></b>		
	9am	Entries Released and <b>Clean Up</b> Commences – <b><u>All Hands On Deck!</u></b>	

## Important General Information for Exhibitors

- **Dress Code:** It will be mandatory at this Fair that all exhibitors shall be neatly and cleanly dressed. In addition to this each member shall at ALL times while on the grounds display in some manner the 4-H emblem.
  - **Livestock Exhibitors:** It is required to wear the following during all classes and contests:  
White T-Shirt or 4-H Shirt and suitable pants, slacks, skirts, and footwear required. No sneakers or sandals for safety reasons.
- Entries are limited to members enrolled and in **good standing in 4-H Clubs** and who have complied with all club requirements.
- **Age Classification** --- As of January 1<sup>st</sup> of the Current year
  - **Seniors: 14-18 years old**
  - **Juniors: 8-13 year old**
  - **Cloverbuds: Under 8 years old**
- **Records:** Keeping records is an important part of your project work.
  - When entering exhibits, **ALL LIVESTOCK** exhibitors must turn in an **UP-TO-DATE MAIN PROJECT RECORD**.
- To qualify for a **Rosette (Best of Show)** for a project taken individually (without a leader – Does NOT pertain to Livestock) a Project Record must be submitted with the entries. All entries must have been made by exhibitor during the current year.
  - Records may be submitted as an entry to the Fair. Include only this year's projects that you have carried with East Middleboro, the Mass. Summary and extra pictures and clippings. Records will be judged for accomplishment, accuracy and appearance. Blank record forms may be obtained on the website, your leader, or by calling the Plymouth County 4-H Office.
    - Cash awards of \$15, \$12, \$10, \$8, \$6, and \$4 will be given to the top six sets of records in the Senior and Junior Divisions. One rosette will be awarded to the top record. In accordance with state regulations all Cloverbuds will receive ribbons.
- **Exhibits:** All Static Exhibits and Animal Exhibits are to remain until the Fair closing.
- **Judges:** Are chosen by the Fair committee. **Judge's Decisions are Final.** All legitimate grievances may be presented by the 4-H member to the Executive Board in the 4-H office. Fair play and good sportsmanship are expected from all exhibitors and parents.
- **Premiums:** Will be presented at Achievement Night that will be held in the Fall. Family and friends of 4-Hers are invited and encouraged to attend.
- **Enrollment for 2022-2023:** Current members must fill out an enrollment card for next year. Cards are available in the School House during the Fair.

**The East Middleboro 4-H Community Committee and 4-H members will not be responsible for the loss of/or damage to exhibits nor injury to animals.**

## Project Entries

- All items for exhibit must have been produced and/or prepared by the exhibitor since October 1<sup>st</sup> of the preceding year.
- Up-to-date project records to be judged must accompany entry forms.
- **All entries – including animals** – should be listed on the Entry Form and presented at the time of entry.
- Write a complete description of each static item so it is easily identified.
- Entry Tags may be obtained from Lori Tunewicz-Gavin (before the Fair call 508-212-6163) – filled out and attached to each item before entry. Cloverbuds are included.
- Entries are accepted as follows:
  - Wednesday, August 31<sup>st</sup> 6-8:30pm All non-perishable and club exhibits
  - Thursday, September 1<sup>st</sup> 6-7:30pm Foods, Flowers, Vegetable exhibits **ONLY**
    - **Late Entries will be exhibited but not judged.**
  - Saturday, September 3<sup>rd</sup> by 7:30am All animal exhibits
  - Sunday, September 4<sup>th</sup> **Animals** will be released at Fair end
  - Monday, September 5<sup>th</sup> Pick-up all **Static** entries and exhibits
- **4-H members are responsible for the care and feeding of their animals during the Fair.**

## Award Information

- **Judging** of livestock and static exhibits is on the **Danish System**. This means each animal, project, or article is judged on its own merit and awarded the appropriate ribbon.
  - The top three blue ribbon entries will then be judged in order of excellence and those listed as premium classes will be awarded premiums.
  - A Rosette will be awarded to the outstanding entry in each project.
- **Static Exhibits** – exhibits which are on display in the schoolhouse
  - Each department is divided into Juniors and Seniors.
  - Premiums will be awarded in each lot to the top 3 blue ribbon exhibits as follows:
    - 1<sup>st</sup> \$3, 2<sup>nd</sup> \$2, 3<sup>rd</sup> \$1 (Premiums are dependent upon the success of the Fair and may be prorated)
    - Premiums are awarded at Achievement Night in the fall.
    - *In accordance with state regulations Cloverbud exhibits will not be judged or receive premiums, but will receive rosettes.*
  - The decisions of the judges are final. Judges may disqualify any entry that does not follow the instructions for the class.
- **Sweepstakes Awards** - will be given to the Senior and Junior boys and girls who earn the most points at this Fair.
  - Club members must accumulate at least 30 points to be eligible for the Sweepstakes.
  - Points are figured as follows
    - 3 points = Blue Ribbon
    - 2 points = Red Ribbon
    - 1 point = White Ribbon
    - Maximum of 21 points per project count toward the Sweepstakes Award (Ribbon will be given on all entries)



- Any East Middleboro 4-H club member may make entries in:

Arts	Foods	Photography	Spinning
Crafts	Handwork	Quilting	Vegetables
Child Care	Horticulture	Science & Nature	Visual Presentations
Fishing	Livestock	Sewing	Woodworking

- **Club Exhibits**

- Each Club may make one exhibit or banner – contact Lori Tunewicz-Gavin (508-212-6163) to reserve your space, electrical outlets, etc... Approximate space is 45” across
  - Set up – Wednesday, September 1<sup>st</sup> 6-8:30p
  - Pick up – Same as the rest of the Static Exhibits

- **Costume Parade**

- Includes both Children’s and the Animal Classes.
- Fun and OPEN contest (no Sweepstakes Points).
- Open to all Children and Animals (chickens, rabbits, goats, dogs, etc.) to dress up in costume.
- Ribbons will be given to all.
- Various categories – Most Original, Most Old Fashioned, Funniest, Cutest, etc..
- Contest will be held Sunday at 3pm.

## Records

100-1 Records to be **judged**

## Arts and Crafts

All \* items must be mounted and have the lot number on the back.

### Art Work

101-102 Acrylic Portrait  
101-103 Acrylic Landscape  
101-104 Acrylic Still Life  
101-105 Acrylic Waterscape  
101-106 Acrylic Animal  
101-107 Acrylic Abstract  
101-108 Charcoal  
101-109 Collage  
101-110 Colored Pencil  
101-111 Computer Generated  
101-112 Crayon  
101-113 Felt Marker  
101-114 Mixed Media  
101-115 Oil Portrait  
101-116 Oil Landscape  
101-117 Oil Still Life  
101-118 Oil Waterscape  
101-119 Oil Animal  
101-120 Oil Abstract  
101-121 Pastel  
101-122 Pen and Ink  
101-123 Pencil  
101-124 Poster Paint  
101-125 Painted Glass  
101-126 Textile Paint  
101-127 Watercolor Portrait  
101-128 Watercolor Landscape  
101-129 Watercolor Still Life  
101-130 Watercolor Water Scape  
101-131 Watercolor Animal  
101-132 Watercolor Abstract  
101-133 Unusual – does not fit categories listed

### Pottery and Ceramics

101-134 Animals, group  
101-135 Animals, single  
101-136 Basket  
101-137 Bowl  
101-138 Charms  
101-139 Figurine, group  
101-140 Figurine, single  
101-141 Human Figure, group  
101-142 Human Figure, single  
101-143 Mask

101-144 Mug  
101-145 Planter  
101-146 Vase  
101-147 Unusual – does not fit into categories listed

### Miscellaneous Crafts

101-148 Bead Work  
101-149 Bead Picture  
101-150 Camp Crafts  
101-151 Candles  
101-152 Christmas Ornaments  
101-153 Craft Stick Art  
101-154 Decorated Boxes  
101-155 Decorated Wood  
101-156 Diorama  
101-157 Glass  
101-158 Holiday Arts  
101-159 Holiday Decorations  
101-160 Jewelry – Bracelet  
101-161 Jewelry – Earrings  
101-162 Jewelry - Necklace  
101-163 Leatherwork  
101-164 Lego from a Kit  
101-165 Lego not from a Kit  
101-166 Macrame  
101-167 Mask  
101-168 Models from Kits  
101-169 Models from Scratch  
101-170 Multi Media Art  
101-171 Native American Crafts  
101-172 Nature Crafts  
101-173 Paper Art  
101-174 Patriotic Decoration  
101-175 Picture Frame  
101-176 Poster  
101-177 Quilling  
101-178 Scrapbooking  
101-179 Seasonal Decorations  
101-180 String Art  
101-181 Tie Dye  
101-182 Toys  
101-183 Using Art for Education  
101-184 Woodburning  
101-185 Yarn Crafts  
101-186 Unusual – does not fit in categories listed

## Special Contest: 4-H Poster Contest

This is an opportunity for individuals to promote the projects in which they are enrolled. There is no limit on the number of posters that can be entered. The Danish system of judging will be used. A rosette will be awarded in each class.

101-201 Cloverbuds

101-202 Juniors

101-203 Seniors

## Science & Nature

All collections must contain **at least 5 specimens**. Each specimen in the collections must be **labeled**.

103-101	Collection of Wild Flowers	103-109	Collection of Tree Bark
103-102	Collection of Edible Plants	103-110	Collection of Leaf Prints
103-103	Collection of Insects	103-111	Collection of Crystals - Homemade
103-104	Collection of Leaves	103-112	Collection of Crystals – from Nature
103-105	Collection of Seeds	103-113	Journal - Nature
103-106	Collection of Soil Samples	103-114	Recycled Item
103-107	Collection of Wood Samples	103-115	Miscellaneous
103-108	Collection of Herbs		

## S.T.E.M.

103-116	Posters, Models, Sketches and Drawings:		
	A. Chemistry	D. Earth and Environmental Science	
	B. Biology	E. Astronomy and Space	
	C. Physics	F. Other	

**Poster should demonstrate scientific method and/or knowledge of subject**

103-117	Miscellaneous Science Project	103-121	Math Origami
103-118	Model: Original	103-122	Invention, any materials
103-119	Model: from a Kit	103-123	Invention, from a kit
103-120	Sketches and Drawings	103-124	Robotics (can be Lego if robotic)
103-125	Computer Programming and Technology, Digital Projects: Screen shot of digital project with Explanation of Process, mounted on 8.5 x 11 Cardstock – no frames please		

## Fleece Contest

All fleeces must be from sheep owned by the exhibitor and shorn in the spring of the current year. Fleeces should be in a clear plastic bag. Fleeces should be entered with the Static Exhibits on Wednesday evening. Ribbons and points will be awarded (no premiums).

Judging: cleanliness, uniformity of grade, color, crimp, staple length, fiber strength, and handle (feel). White fleeces should be free of colored fibers. “Second Cuts” result in fibers of less than full lengths are less desirable.

Lot:

White

104-101 Fine

104-102 Medium

104-103 Coarse

Colored

104-104 Light Shaded

104-105 Dark Shaded

## Foods

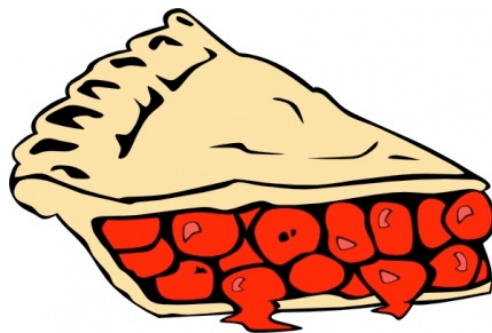
- You may have as many entries per lot as you wish in the FOODS department only.
- All 4-Hers may exhibit any food prepared by them to be judged.
- All food exhibits will be sold in the Food Sale.
- You may exhibit as many different recipes as you wish in each lot.
- A **complete Recipe** – amount of all ingredients with mixing and cooking directions – must accompany each entry.
- Food must be entered on a paper plate and be covered securely with plastic wrap.
- Small items such as cookies, squares, muffins, rolls, etc. are judged on **plates of 6**. Any others can be wrapped separately to go to the Food Sales.
- Large items such as breads, cakes, and pies are judged as a single unit.
- No refrigerated items accepted.

105-101	Cookies	105-109	Quick Breads
105-102	Bar Cookies	105-110	Nutritious Snack
105-103	Frosted Cake (from scratch)	105-111	Cupcakes
105-104	Unfrosted Cake	105-112	Candy
105-105	Decorated Cake (may use mix)	105-113	Gluten Free from Scratch
105-106	Pies	105-114	Gluten Free from Mix
105-107	Muffins	105-115	Preserves
105-108	Sweet Breads	105-116	Brownies
		105-117	Micellaneous

## Special Food Contest

These contests are open to all 4-Hers, leaders, and parents. A \$5.00 cash award will go to the winner in each contest in the Junior and Adult classes. These entries should be brought to the schoolhouse at the stated time for Food Exhibits. The products are to be sold at the Food Sale. Enclose the complete recipe. Cover securely with plastic wrap, except for preserves. 4-Hers entering this contest may use their points towards the Sweepstakes.

105-201	Cheese	105-204	Fudge, 1 pound
105-202	Apple/Fruit Pie	105-205	Preserves, 2 jars
105-203	Decorated Cake	105-206	Whoopie Pies



## Horticulture Flowers

Collect the material in the evening or in the early morning. Place them for a few hours in deep water in a cool, draft free place. Blossoms should be uniform in size and in their prime. Display the number of blossoms indicated in each class. Avoid plant material with disease, insect, or spray injury.

*All specimens must be raised by the exhibitor.*

- |  |   |
|--|---|
| 106-101 Asters, 5 Blooms                         | 106-110 Petunias, 5 Sprays                |
| 106-102 Calendulas, 5 Blooms                     | 106-111 Roses, Standard, 5 Stems          |
| 106-103 Cosmos, 4 Sprays                         | 106-112 Roses, Mini, 5 Stems              |
| 106-104 Dahlias, 5 Blooms                        | 106-113 Zinnias, 5 Blooms                 |
| 106-105 Gladioli, 5 Spikes                       | 106-114 Any Other Flowers, 5 Blooms/Stems |
| 106-106 Hydrangea, 3 Sprays                      | 106-115 Holiday Arrangement               |
| 106-107 Marigolds, Large, 5 Stems                | 106-116 Garden Flower Bouquet             |
| 106-108 Marigolds, Small, 5 Stems                | 106-117 Wildflower Arrangement            |
| 106-109 Nasturtium, 5 Sprays                     | 6 different with list of names            |
| 106-118 Wreath & Swag – cones, herbal, evergreen |   |

## Indoor Plants

- |                          |  |
|--------------------------|--|
| 106-201 African Violet   | 106-206 Hanging Flowering Plant                                  |
| 106-202 Begonia          | 106-207 Hanging Foliage Plant                                    |
| 106-203 Cacti            | 106-208 Any Other Potted Plant                                   |
| 106-204 Christmas Cactus | 106-209 Dish Garden  |
| 106-205 Hanging Plant    | 106-210 Terrarium – in a fish bowl type with 2<br>Or more plants |

## Outdoor Container Gardens

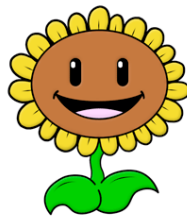
- |   |  |
|---|--|
| 106-301 Outdoor Flowers in a Medium Container 2 Gallons or less |  |
| 106-302 Outdoor Flowers in a Large Container over 2 Gallons     |  |
| 106-303 Window Box Garden                                       |  |
| 106-304 Herb Garden   |  |
| 106-305 Edible Garden   | 106-307 Miscellaneous Container Garden |

## Special Contests

- |   |  |
|---|--|
| 106-401 Sunflower, Tallest  |  |
| 106-402 Sunflower, Biggest Head   |  |
| 106-403 Pumpkin, Largest  |  |
| 106-404 Squash, Longest   |  |
| 106-405 Squash, Heaviest  |  |
| 106-406 Vegetable Creation – Create your favorite person, place, or thing put on a paper plate and label as to whom, where, or what |  |

**These 3 contests are open to all 4-Hers, leaders, and parents  
Judged in 2 classes – 4-Hers and Adults**

- |   |
|---|
| 106-407 Tea Time – Arrangement in a Tea Pot, Tea Cup or Mug                               |
| 106-408 Kitchen Favorite - Arrangement in or including a kitchen utensil – not over 10x10 |
| 106-409 Fairy Garden  |



## Vegetables

Specimens should be clean and free from blemishes. Specimens should be similar in size, shape, and color. They should not be too large or too small. They should be at their peak of perfection for eating. Display them on paper plates with the plates with the number of specimens indicated in each lot. *All specimens must be raised by the exhibitor.*

- 107-101 Beans – Green, 10 pods
- 107-102 Beans – Yellow, 10 pods
- 107-103 Beans – Purple , 10 pods
- 107-104 Beans – Pole, 10 pods
- 107-105 Beans – Shell, 10 pods
- 107-106 Beets – Remove top and leave 1 inch stem, 5 specimens
- 107-107 Cabbage – 1 Head
- 107-108 Carrots - Remove top and leave 1 inch stem, 5 specimens
- 107-109 Corn – Sweet, 5 specimens Husked
- 107-110 Corn – Indian, 5 specimens Husked
- 107-111 Cucumbers – Standard, 2 specimens
- 107-112 Cucumbers – Pickling, 2 specimens
- 107-113 Cucumbers – English, 2 specimens
- 107-114 Eggplant – Purple, 2 specimens
- 107-115 Eggplant – Miscellaneous, 2 specimens
- 107-116 Gourds, 3 specimens
- 107-117 Herbs, 3 specimens
- 107-118 Onions, 5 specimens
- 107-119 Peppers – Green, Orange, Yellow, Red Bell Type, 2 specimens
- 107-120 Peppers – Banana, Sweet Italian, 5 specimens
- 107-121 Peppers – Hot Red, 5 specimens
- 107-122 Peppers – Hot Green, 5 specimens
- 107-123 Potatoes – 5 specimens
- 107-124 Pumpkins – 2 specimens
- 107-125 Radishes – 10 specimens
- 107-126 Squash – Summer Zucchini, 2 specimens
- 107-127 Squash – Summer Yellow, 2 specimens
- 107-128 Squash – Winter, 2 specimens
- 107-129 Squash – Unusual Shape, 2 specimens
- 107-130 Tomatoes – Cherry, Green, 5 specimens
- 107-131 Tomatoes – Cherry, Red, 5 specimens
- 107-132 Tomatoes – Plum, Green, 5 specimens
- 107-133 Tomatoes – Plum, Red, 5 specimens
- 107-134 Tomatoes – Green, 5 specimens
- 107-135 Tomatoes – Red, 5 specimens
- 107-136 Tomatoes – Unusual Color, 5 specimens
- 107-137 Vegetable Arrangement – Harvest Bounty 5 or more vegetables artistically arranged in a container
- 107-138 Miscellaneous

## Handwork

The top three blue ribbon entries in the \* classes will receive premiums of \$8, \$6, and \$4.

108-101	Counted Cross Stitch	108-113	Knitted Afghan*
108-102	Crocheted Accessories	108-114	Latch Hook Item
108-103	Crocheted Afghan*	108-115	Needle Felted - Woodland Animal
108-104	Crocheted Miscellaneous	108-116	Needle Felted – Ocean Animal
108-105	Crocheted Garment*	108-117	Needle Felted – Farm Animal
108-106	Embroidered Item	108-118	Needle Felted – Plant
108-107	Handwork Miscellaneous	108-119	Needle Felted Holiday Decoration
108-108	Handspun Wool Yarn	108-120	Needle Miscellaneous
108-109	Handspun Miscellaneous Fibers	108-121	Wet Felted Item
108-110	Knitted Accessories	108-122	Woven Garment
108-111	Knitted Garment*	108-123	Woven Accessory
108-112	Knitted Miscellaneous	108-124	Woven Miscellaneous

## Sewing

109-101	Shirt, Blouse	109-112	Apron
109-102	Pants	109-113	Sewed Accessories
109-103	Shorts	109-114	Hats
109-104	Skirt	109-115	Home Décor
109-105*	Suit	109-116	Flags
109-106*	Dress	109-117	Stuffed Toy
109-107	Jumper	109-118	Bag
109-108	Vest	109-119	Doll Clothes
109-109*	Party Gown	109-120	Toys
109-110*	Coat Jacket	109-121	Sewing Miscellaneous
109-111	Sleepwear	109-122	Notebook of Construction Techniques (hems, seams, etc.)

## Quilting

109-123	Lap Quilt Pieced - Tied	109-129	Pillow – Machine Quilted
109-124	Lap Quilt Pieced – Machine	109-130	Stocking – Machine Quilted
109-125	Quilt, Pieced, Tied – Twin or Full	109-131	Wall Hanging - Paper Pieced
109-126	Quilt, Pieced, Tied - Queen or King	109-132	Wall Hanging – Machine Quilted
109-127	Quilt, Pieced, Machine – Twin or Full	109-133	Unusual – Does not fit into any category
109-128	Quilt, Pieced, Machine - Queen or King		

Place the following letter of the quilting techniques used next to the class number on the entry form:

### N- first quilt

The top three blue ribbon entries in the \* classes will receive premiums of \$8, \$6, and \$4.

Please note: Quilts and Afghans must be at least twin size or larger.

## Horse

110-101 Breed Project – check with your leader for requirements

### Horse Lovers

110-102 Horse Lovers Notebook – check with your leader for requirements.

## Visual Presentations

Sign up when you enter Wednesday or Thursday nights or at 10am on Saturday in the schoolhouse. You will be notified when and where you will do your presentation. Ribbons awarded by the Danish System. A rosette will be awarded for each class.

# Photography

## Rules:

- Open to all members from East Middleboro. There is a Junior and Senior Divisions.
- Limited to photographs taken in the past year.
- You may enter up to 5 photographs from different categories of which a maximum of 3 may be from the color class.
- Only 1 photograph per category/class may be entered.
- All photographs must be unmounted, no smaller than 4x6”.
- Each entry is to be submitted in clear sheet protector. Please put the tag in the sheet protector.
  - Include: Title of Photo as well

## Objective:

- To encourage 4-H members to use photography as a meaningful communication tool in their lives.
- To be proud of their accomplishments.

## Judging Criteria:

- Composition – is the pleasant arrangement of elements within a frame, which can give the most powerful ability to attract the eye.
- Lighting – the use and control of light whether manmade or natural, refers to how dimension, shape and roundness are defined in an image.
- Impact – is the sense one gets upon viewing an image where the maker wants the viewer to stop.

## Black and White Photos

111-101 **Pets** - any domesticated animal in any setting or circumstances

111-102 **Farming & Gardening** - anything related to the landscape of farms and gardens including farm

111-103 **Scenic** - any outdoor scene, landscape or cityscape where there is a strong emphasis on light and composition

111-104 **4-H Activity** – any activity relating to 4-H or your 4-H project(s).

111-105 **People** – any photo that focuses on a person or persons

111-106 **Wildlife** - any animal in nature including bird, insects, reptiles, mammals

## Color Photos

111-107 **Pets** - any domesticated animal in any setting or circumstances

111-108 **Farming & Gardening** - anything related to the landscape of farms and gardens including farm

111-109 **Scenic** - any outdoor scene, landscape or cityscape where there is a strong emphasis on light and composition

111-110 **4-H Activity** – any activity relating to 4-H or your 4-H project(s).

111-111 **People** – any photo that focuses on a person or persons

111-112 **Wildlife** - any animal in nature including bird, insects, reptiles, mammals





## Woodworking

### Scroll Sawing

113-101	General Fret Work	113-109	Lawn Ornament
113-102	Appliqués and Overlays	113-110	Toy
113-103	Segmentation	113-111	Puzzle
113-104	Intarsia	113-112	Clock
113-105	Incise-Carving	113-113	Relief Project
113-106	Inlay Project	113-114	Baskets
113-107	Compound-3D Project	113-115	Vases/Bowls
113-108	Silhouette	113-116	Fret Work Shelf

### Carving

113-118	Bird	113-120	Caricature Carving
113-119	Relief Carving	113-121	Miscellaneous Carving

### General

113-122	Bird House	113-130	Cutting Board
113-123	Stool	113-131	Bat House
113-124	Bookcase	113-132	Small Furniture Piece
113-125	Shelves	113-133	Jigsaw Puzzle
113-126	Magazine Rack	113-134	Clock Restoration
113-127	Plaques	113-135	Woodturning
113-128	Jewelry Box	113-136	Furniture - General
113-129	Storage Box	113-137	Furniture – Restoration
		113-138	Miscellaneous

## Animals

\*\*\*\* Animal Exhibitors must submit up-to-date PROJECT RECORD when entering animals\*\*\*\*

**Completed** entry forms must be received by **August 14th**.

**Livestock Entries:** Brenda Easter, 501 Prospect Hill St., Raynham, MA 02767

**Poultry Entries:** No Chicken Show this year

**Dog Entries:** Christine Hoyt 34 Cedar Crest Dr., Bridgewater, MA 02324

**Rabbit Entries:** Sue Blauss 8 Atwood St, Carver, MA 02330

### General Rules

1. To show animals in East Middleboro an exhibitor must be a member in good standing of a 4-H club and **must** present a project record for the animal being shown.
2. Animal health regulations will be maintained. All animals entered at the Fair will be examined at entry time for visible evidence of infectious or contagious diseases. Evidence of disease will result in the animal's rejection for entrance. Inspector's decision is final. All required tests must be made in the name of the current owner or exhibitor. Rabies inoculations are strongly recommended for all beef, dairy, goats, and sheep. Remember to bring your health certificates. You must have all current health records even if animals are not being shown. If you have any questions – call your leader!
3. ALL animals must be pre-registered to reserve pen space by August 14th.
4. No one but exhibitors will be permitted to work on animals. Violations may result in disqualification.
5. Exhibitors are responsible for the care and feeding of their animals during the Fair.
6. All animals are to remain on the grounds until Sunday or prize money will be forfeited.
7. All animal exhibitors must be on the grounds by 8am Sunday. All animals will be released at the closing of the Fair.
8. Each club will be responsible for cleaning out its own area: pens, cages, bedding, and manure. All exhibitors and parents are asked to assist in cleaning the grounds to help take down tents.
9. All sheep and goats must comply with the Scrapie Program.
10. All Cloverbuds will receive ribbons for their participation.
11. All 4-H members are expected to abide by the Dress Code.
12. All entries must be accompanied with an up-to-date project record.
13. Entry forms must be filled out completely. Note there are separate entry forms for animals and rabbits. Livestock, rabbit, and dog entries must be received by **August 14th**.
14. **Selling of animals is allowed for 4-H youth members only.** In the teaching of proper practices and to help with the member's record keeping a Bill of Sale must be filled out. This will be provided by the East Middleboro Fair; it will be a triplicate – one for the buyer, one for the 4-Her, and one that will remain in the book so if misplaced the 4-H member can get a copy for their records. **All monies made go to the 4-H member.**

**Premiums for Animal Classes:**

Department	Premiums			Classes for which Premiums are Paid
Beef	\$20	\$15	\$10	Fitting, Showmanship
Cat	\$15	\$10	\$8	Fitting/Showmanship
Dairy	\$20	\$15	\$10	Fitting, Showmanship
Dog	\$15	\$10	\$8	Fitting/Showmanship, Obedience
Goat (Dairy)	\$15	\$10	\$8	Fitting, Showmanship
Goat (Other)	\$15	\$10	\$8	Fitting, Showmanship
Poultry	\$5	\$4	\$3	All Classes Listed in this Fair Book
Rabbits	\$5	\$4	\$3	All Classes Listed in this Fair Book
Cavies	\$5	\$4	\$3	All Classes Listed in this Fair Book
Sheep	\$15	\$10	\$8	Fitting, Showmanship
Swine	\$15	\$10	\$8	Fitting, Showmanship

**Premiums are dependent upon the success of the Fair and may be prorated. Ribbons and Sweepstakes Points will be awarded for all classes. Premiums will be presented at Achievement Night in the fall.**



**BEEF:** Animals must be in member's name by May 1 of the current year.

**Fitting:**

- 201-70 Cloverbud
- 201-71 Novice
- 201-72 Junior
- 201-73 Senior

*All breed classes will be divided by breed. Age as of July 1 of the current year.*

**Female:**

- 201-A Under 6 Months
- 201-B Over 6 Months
- 201-C Over 1 Year
- 201-D Cow and Calf, Any Age

**Showmanship:**

- 201-80 Cloverbud
- 201-81 Novice
- 201-82 Junior
- 201-83 Senior

**Market:**

- 201-E Under 6 Months
- 201-F Over 6 Months
- 201-G Over 1 Year

**DAIRY:** Animals must be in member's name by May 1 of the current year.

**Fitting:**

- 202-70 Cloverbud
- 202-71 Novice
- 202-72 Junior
- 202-73 Senior

*All breed classes will be divided by breed. Age as of July 1 of the current year.*

**Female:**

- 202-A Under 6 Months
- 202-B Over 6 Months
- 202-C Over 1 Year
- 202-D Cow and Calf, Any Age

**Showmanship:**

- 202-80 Cloverbud
- 202-81 Novice
- 202-82 Junior
- 202-83 Senior

**Market:**

- 202-E 2 Year Old
- 202-F 3 Year Old or Older



**CAT: THERE WILL BE NO CAT SHOW THIS YEAR.**

**Pet Class:**

**Fitting & Showmanship**

- 211-1 Cloverbud
- 211-2 Novice
- 211-3 Junior
- 211-4 Senior

**Purebred:**

**Fitting & Showmanship**

- 211-5 Cloverbud
- 211-6 Novice
- 211-7 Junior
- 211-8 Senior

**Showmanship:**

- 211-9 Cloverbud
- 211-10 Novice
- 211-11 Junior
- 211-12 Senior



# DOG

**Send dog entries to:** Christine Hoyt 34 Cedar Crest Dr., Bridgewater, MA 02346 by **August 8th.**

1. 4-Hers themselves must have trained the dogs to be entered in the classes.
2. The entered dog must have been cared for by the 4-Her at least 90 days prior to the show and have up-to-date health certificates.
3. Members may enter each dog in an obedience class. There will be fitting and showmanship classes, as well as a costume class.
4. A written dog knowledge test will be given.

## Obedience

203-1 **Pre Novice A** Novice handlers and novice Dogs  
**Pre Novice B** Open to experienced handlers who have previously finished a dog at novice or Above starting with a new dog (All on Leash)

- A. Heel on leash and figure 8    B. Stand for examination    C. Recall  
D. Long Sit (1 minute)    E. Long Down (3 minutes)

203-2 **Novice A** Open to any dog ready for off-leash work, which has not yet achieved a CD

- A. Heel on leash and figure 8    B. Stand for examination    C. Heel Free  
D. Recall    E. Long Sit (1 minute)    F. Long Down (3 minutes)

## Dogs -- continued

203-3 **Novice B** For CD dogs with new handlers, or dogs shown by handlers who have finished a dog at the novice level. Same routine as Novice A.

203-4 **Graduate Novice**

- A. Heel on leash    B. Stand for examination    C. Heel Free and Figure 8  
D. Drop in Recall    E. Long Sit (3 min out of sight)    F. Long Down (5 min out of sight)

203-5 **Open A**

- A. Heel on leash and Figure 8    B. Drop in Recall    C. Retrieve on flat  
D. Long Down (5 min out of sight)    E. Retrieve over high jump    F. Broad Jump

203-6 **Open B** For CD dogs with handlers who have previously finished a dog at the open level or new handlers working dogs, which have received a CDX

203-7 **Graduate Open** For dogs and handlers who have achieved a CDX but not yet working at utility level.

203-8 **Utility**

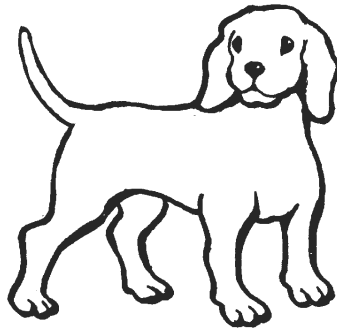
- A. Signal Exercise    B. Scent Discrimination (leather and metal)    C. Directed Retrieve  
D. Directed Jumping    E. Moving Stand and Examination

## Dog Fitting and Showmanship

- 203-70 Cloverbud, 5-7 years  
203-71 Novice Junior, 8-13 years – First Year Exhibitor  
203-72 Novice Senior, 14-18 years – First Year Exhibitor  
203-73 Junior, 8-13 years } 2<sup>nd</sup> year or higher exhibitors who have not won 3 first place  
203-74 Senior, 14-18 years } ribbons in 4-H or AKC  
203-75 Advanced Junior, 8-13 years } exhibitors who have won 3 first place ribbons in Junior Class or  
203-76 Advanced Senior 14-18 years } Senior Class are showing Open AKC

## Dog Knowledge

- 203-91 Cloverbud                      203-92 Novice                      203-93 Junior                      203-94 Senior



## Dog Agility

- Junior (ages 8-13)  
Senior (ages 14- 18)

203-97

**Novice** – First time agility handlers who haven't competed in any agility contest. This will be done on leash with the only time the handler drops the leash is at a tunnel. Once dog wins 3 of the same game (with competition) at the novice level they must move up to the open level.

203-98

**Open** – For those who have done an agility course before or are off leash in obedience. This will be done either off leash or with a tab style lead. Upon winning 3 of the same game at the open level, they must move up to the advanced level.

203-99

**Advanced** – Is done off leash only for those who either compete in agility or have won 3 open level contests.

**GOATS:** Animals must be in member's name by June 1 of the current year. All goats must comply with the Scrapie Program.

**DAIRY GOATS:**

**Fitting:**

204-70 Cloverbud  
204-71 Novice  
204-72 Junior  
204-73 Senior

**Showmanship:**

204-80 Cloverbud  
204-81 Novice  
204-82 Junior  
204-83 Senior

**Breed:**

204-A Kid, 1-6 Months  
204-B Kid, 7-12 Months

204-C Yearling  
204-D 2-5 Year Old Milker  
204-E 5 Year and Over Milker

**ALL OTHER GOATS:** will be separated by breed

**Fitting:**

205-70 Cloverbud  
205-71 Novice  
205-72 Junior  
205-73 Senior

**Showmanship:**

205-80 Cloverbud  
205-81 Novice  
205-82 Junior  
205-83 Senior

**Breed:** *classes will be divided by breed*

204-A Kid, 1-6 Months  
204-B Kid, 7-12 Months

204-C Yearling  
204-D 2-5 Year Old Milker  
204-E 5 Year and Older Milker

**SHEEP:** Animals must be in member's name by June 1 of the current year. Members will be limited to two animals per class. Rams will be brought only on Show Day. No rams will be allowed to stay on the grounds. All sheep must comply with the Scrapie Program.

**Fitting:**

206-70 Cloverbud  
206-71 Novice  
206-72 Junior  
206-73 Senior

**Showmanship:**

206-80 Cloverbud  
206-81 Novice  
206-82 Junior  
206-83 Senior

**Market Lambs:** *these lambs are not shown in any other Breed Class*

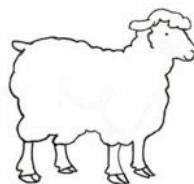
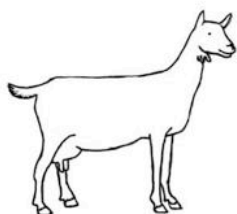
206-1 A. Light      B. Medium      C. Heavy

**Breed Classes:** *All breed classes will be divided by breed. All breeds accepted. Please be sure to list breed on entry form.*

206-2 Ewe Lamb  
206-3 Yearling Ewe  
206-4 Aged Ewe  
206-5 Ram Lamb  
206-6 Yearling/Aged Ram

206-7 Flock – 3 Ewes  
206-8 Pairs – Ewe Lambs  
206-9 Pairs – Yearling Ewes  
206-10 Pairs – Ram Lambs





**SWINE:** Animals must be in member's name by June 1 of the current year.

**FITTING:**

- 207-70 Cloverbud
- 207-71 Novice
- 207-72 Junior
- 207-73 Senior

**SHOWMANSHIP:**

- 207-80 Cloverbud
- 207-81 Novice
- 207-82 Junior
- 207-83 Senior

**GILTS:**

- 207-1 Light, April 1 and after
- 207-2 Medium, Feb.15 – Mar. 31
- 207-3 Heavy, Jan. 1-Feb. 15

**MARKET:**

- 207-4 Light, April 1 and After
- 207-5 Medium, Feb. 15-Mar. 31
- 207-6 Heavy, Jan. 1 – Feb. 15



**POULTRY:** - Unfortunately due to the Avian Flu restrictions there will be no Poultry Show. If you are interested in doing something related to chickens for the fair please contact Brenda Easter ([beaster21@gmail.com](mailto:beaster21@gmail.com) or 508-328-8767)

**Serama – Table Top**

- 208-1 Bantams
- 208-2 Standard (Exhibition)
- 208-3 Standard (Production)
- 208-4 Back Yard Birds
- 208-5 Water Fowl (Exhibition)

- 208-6 Water Fowl (Production)
- 208-7 Most Uniform Dozen of Eggs
- 208-8 ½ Dozen of Eggs
- 208-9 Most Unusual ½ Dozen of Eggs
- 208-10 Egg Art –

Turn your eggs into art. Either blown out or as is, one kind of egg or all kinds be as creative as possible...please label what kind of eggs you used and what variety (ie standard chicken; brahama or duck; muscovy)

- 208-11 Showmanship  
A. Cloverbud      B. Novice      C. Intermediate      D. Senior      E. Adult

208-12 Rooster Crowing Contest

- Bring your tested rooster (any size) and the number of his crows will be counted and recorded the most crows in the allotted time will win the contest.

208-13 Rooster Crowing Contest



## **RABBITS and CAVIES:**

1. Any rabbits showing signs of disease will be removed from the Fair grounds by the Chairperson of the Rabbit/Cavy Department.
2. Members will be limited to 10 rabbits per exhibitor for judging.
3. Rabbits must be in the member's name by June 1<sup>st</sup> of the current year.
4. *All exhibitors must groom, carry, and show rabbits themselves.*
5. All rabbit exhibitors must follow the code of conduct rules throughout the Fair.

**Mail Rabbit Entries: Sue Blauss, 8 Atwood St, Carver, MA 02330 by August 14th.**

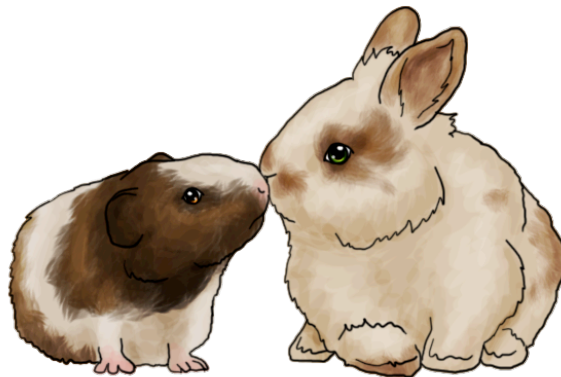
### **Rabbits:**

- |                                   |                           |
|-----------------------------------|---------------------------|
| 209-1 Senior Buck                 | 209-6 Junior Doe          |
| 209-2 6-8 Month Buck              | 209-7 Best Fur (Over All) |
| 209-3 Junior Buck                 | 209-8 Doe and Litter      |
| 209-4 Senior Doe                  | 209-9 Pet Class           |
| 209-5 6-8 Month Doe               |                           |
|                                   |                           |
| 209-10 Showmanship - Novice       |                           |
| 209-11 Showmanship - Intermediate |                           |
| 209-12 Showmanship - Advanced     |                           |

### **Cavies:**

- |                                   |                   |
|-----------------------------------|-------------------|
| 210-1 Senior Boar                 | 210-5 Junior Boar |
| 210-2 Senior Sow                  | 210-6 Junior Sow  |
| 210-3 Intermediate Boar           | 210-7 Pet Class   |
| 210-4 Intermediate Sow            |                   |
|                                   |                   |
| 210-10 Showmanship - Novice       |                   |
| 210-11 Showmanship - Intermediate |                   |
| 210-12 Showmanship - Advanced     |                   |

- |                      |                        |                      |
|----------------------|------------------------|----------------------|
| CO – Coronet         | PA – Peruvian          | PES – Peruvian Satin |
| SI – Silkie          | SIS – Silkie Satin     | TE – Teddy           |
| TIS – Teddy Satin    | TEX – Texel            | WNC – White Crested  |
| AB – Abyssinian      | ABS – Abyssinian Satin | AM – American        |
| AMS – American Satin |                        |                      |



### **Outstanding Community Service Award**

This award is presented to an East Middleboro 4-H Club, which has been outstanding in providing services to the community and to the East Middleboro 4-H activities. The club will be presented a fifty-dollar check at the Achievement program in the fall. The club's name will be engraved on a plaque in the schoolhouse. The application includes the member's names, ages, projects carried, a description of all services provided from last October 1<sup>st</sup> to September 30<sup>th</sup> of the current year and photos, news clippings, letters of appreciation, or signed forms from the recipients. Applications must be submitted by October 1<sup>st</sup> of the current year. Forms may be obtained at the East Middleboro 4-H schoolhouse.

### **Outstanding Junior Leader Award**

This award is to be presented to an East Middleboro 4-H junior leader who has been outstanding in providing service to his/her club, the community, and to the East Middleboro 4-H activities. The award will be presented at the Achievement program in the Fall. The Junior Leader's name will be engraved on a plaque in the schoolhouse. The nominations must be submitted by the club leader by October 1<sup>st</sup>. Forms will be available at the 4-H schoolhouse.

### **Arthur Standish Memorial Award**

This award is open to all clubs in East Middleboro 4-H. Clubs are encouraged to decorate an area, if your club does not have a tent or area for your project, the East Middleboro Fair committee will designate an area for you to decorate and inform the public about your club. The Outstanding Club Display will receive recognition at the awards night in the Fall and their club name will be placed on the Memorial plaque in the schoolhouse.

### **East Middleboro 4-H Fair Book Cover Contest**

This contest is open to all 4-H members in East Middleboro Clubs. The drawing must be in black ink on an 8 ½ x 11 inch piece of paper. The drawing must be an original design and incorporate 4-H and the Fair. All drawings must be received by the 3<sup>rd</sup> Tuesday in March for the Annual Meeting of the East Middleboro 4-H Community Committee.