



## Certificate of Analysis

**Customer:**  
Buffalo Skull Ranch  
407 Hwy 2392/ 2774 HWY 1223  
Corbin, KY 40701

Sample ID: **211026019**  
Order Number: **CB211026011**  
Sample Name: **Alpen Gleaux**

Collected Date:  
Received Date: **10/26/2021**  
COA Released: **10/27/2021**

External Sample ID:  
Batch Number:  
Product Type: **Flower**  
Sample Type: **Flower**

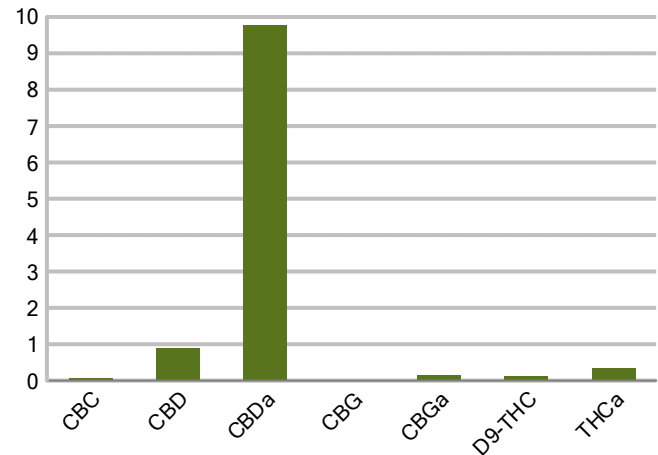
Comments:

### CANNABINOID PROFILE

Analyte	LOQ (%)	% weight	mg/g
CBC	0.01	0.065	0.651
CBD	0.01	0.892	8.916
CBDa	0.01	9.772	97.72
CBDV	0.01	ND	ND
CBG	0.01	0.024	0.238
CBGa	0.01	0.145	1.455
CBN	0.01	ND	ND
d8-THC	0.01	ND	ND
d9-THC	0.01	0.114	1.141
THCa	0.01	0.345	3.452
<b>Total Cannabinoids</b>		<b>11.36</b>	<b>113.6</b>
<b>Total Potential THC</b>		<b>0.417</b>	<b>4.168</b>
<b>Total Potential CBD</b>		<b>9.461</b>	<b>94.61</b>
<b>Total Potential CBG</b>		<b>0.152</b>	<b>1.516</b>



Cannabinoids (% weight)



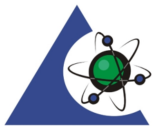
**Ratio of Total Potential CBD to Total Potential THC 22.69 : 1**

**Ratio of Total Potential CBG to Total Potential THC 0.37 : 1**

\*Total Cannabinoids refers to the sum of all cannabinoids detected.

\*Total Potential CBD = (0.877 x CBDa) + CBD. \*Total Potential THC = (0.877 x THCa) + THC. \*Total Potential CBG = (0.877 x CBGa) + CBG.

\*Total Potential THC/CBD are calculated to take into account the loss of an acid group during decarboxylation.



PJLA Testing  
Accreditation #109588

Authorized Signature

Laboratory Manager

Jamie Hobgood

10/27/2021 10:02 AM

DATE

This product has been tested by CannaBusiness Laboratories using validated testing methodologies and a quality system. Values reported relate only to the product tested. CannaBusiness Laboratories makes no claims as to the efficacy, safety or other risks associated with any detected or non-detected levels of any compounds reported herein. This Certificate shall not be reproduced except in full, without the written permission of CannaBusiness Laboratories. Uncertainty information is available on request. Photo is of sample received by the lab and may vary from final packaging. The results apply to the sample as received. ISO/IEC 17025:2017 Accredited.



Sample ID: 211026019  
Sample Name: Alpen Gleaux  
Sample Type: Flower

## Certificate of Analysis

### Customer

Buffalo Skull Ranch  
407 Hwy 2392/ 2774 HWY  
Corbin, KY 40701



Overall Batch Results	
Pesticide	Moisture Content
Potency	Water Activity
Mycotoxins	Heavy Metals
Microbial Screen	Residual Solvents
Terpenoids	

Sample Name: Alpen Gleaux  
Sample ID: 211026019  
Product Type: Flower  
Sample Type: Flower  
Collected Date:  
Received Date: 10/26/2021  
Batch Number:  
Batch Size:  
Sample Size:  
COA released: 10/27/2021 10:02 AM

### Potency (mg/g)

Date Tested: 10/26/2021 Method: CB-SOP-028  
Instrument:

<b>0.417 %</b> Total THC	<b>9.461 %</b> Total CBD	<b>11.36 %</b> Total Cannabinoids	<b>113.6 mg/g</b> Total Cannabinoids
-----------------------------	-----------------------------	--------------------------------------	---

Analyte	Result	Units	LOQ	Result	Units
CBC (Cannabichromene)	0.065	%	0.010	0.651	mg/g
CBD (Cannabidiol)	0.892	%	0.010	8.916	mg/g
CBDa (Cannabidiolic Acid)	9.772	%	0.010	97.72	mg/g
CBDV (Cannabidivarin)	ND	%	0.010	ND	mg/g
CBG (Cannabigerol)	0.024	%	0.010	0.238	mg/g
CBGa (Cannabigerolic Acid)	0.145	%	0.010	1.455	mg/g
CBN (Cannabinol)	ND	%	0.010	ND	mg/g
D8-THC (D8-Tetrahydrocannabinol)	ND	%	0.010	ND	mg/g
D9-THC (D9-Tetrahydrocannabinol)	0.114	%	0.010	1.141	mg/g
THCa (Tetrahydrocannabinolic Acid)	0.345	%	0.010	3.452	mg/g



### Authorized Signature

Laboratory Manager

Jamie Hobgood

10/27/2021 10:02 AM

Date Time

NT = Not tested, ND = Not detected; LOQ = Limit of Quantitation; <LOQ = Detected; >ULOL = Above upper limit of linearity; CFU/g = Colony forming units per 1 gram; TNTC = Too numerous to count

CannaBusiness Laboratories  
License # P-0059: (859)-514- 6999 <https://www.cannabusinesslabs.us>

This product has been tested by CannaBusiness Laboratories using validated testing methodologies and a quality system. Values reported relate only to the product tested. CannaBusiness Laboratories makes no claims as to the efficacy, safety, or other risks associated with any detected or non-detected levels of any compounds reported herein. This Certificate shall not be reproduced except in full, without the written permission of CannaBusiness Laboratories. Uncertainty information is available on request. Photo is of sample received by the lab and may vary from final packaging. The results apply to the sample as received. ISO/IEC 17025:2017 Accredited.