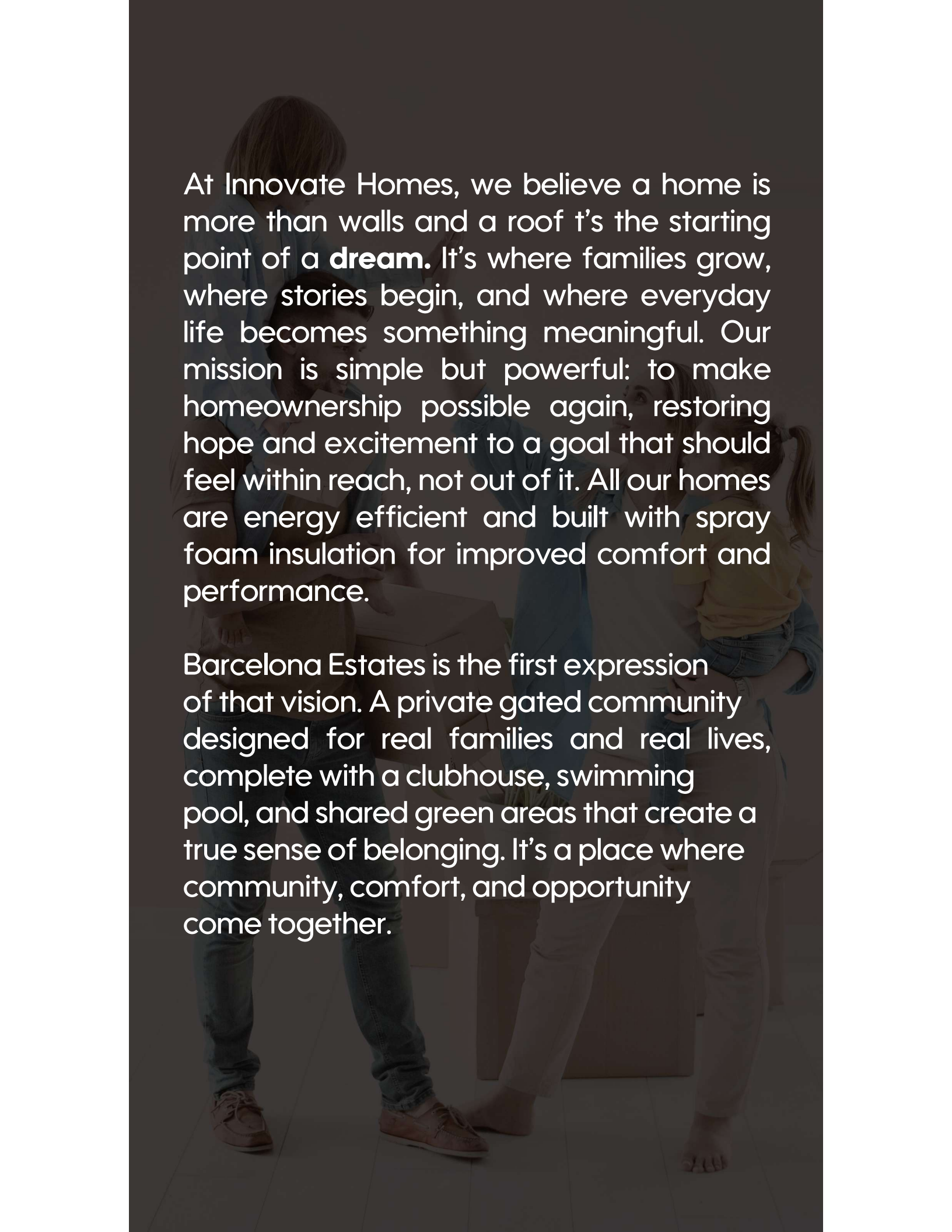


Welcome to



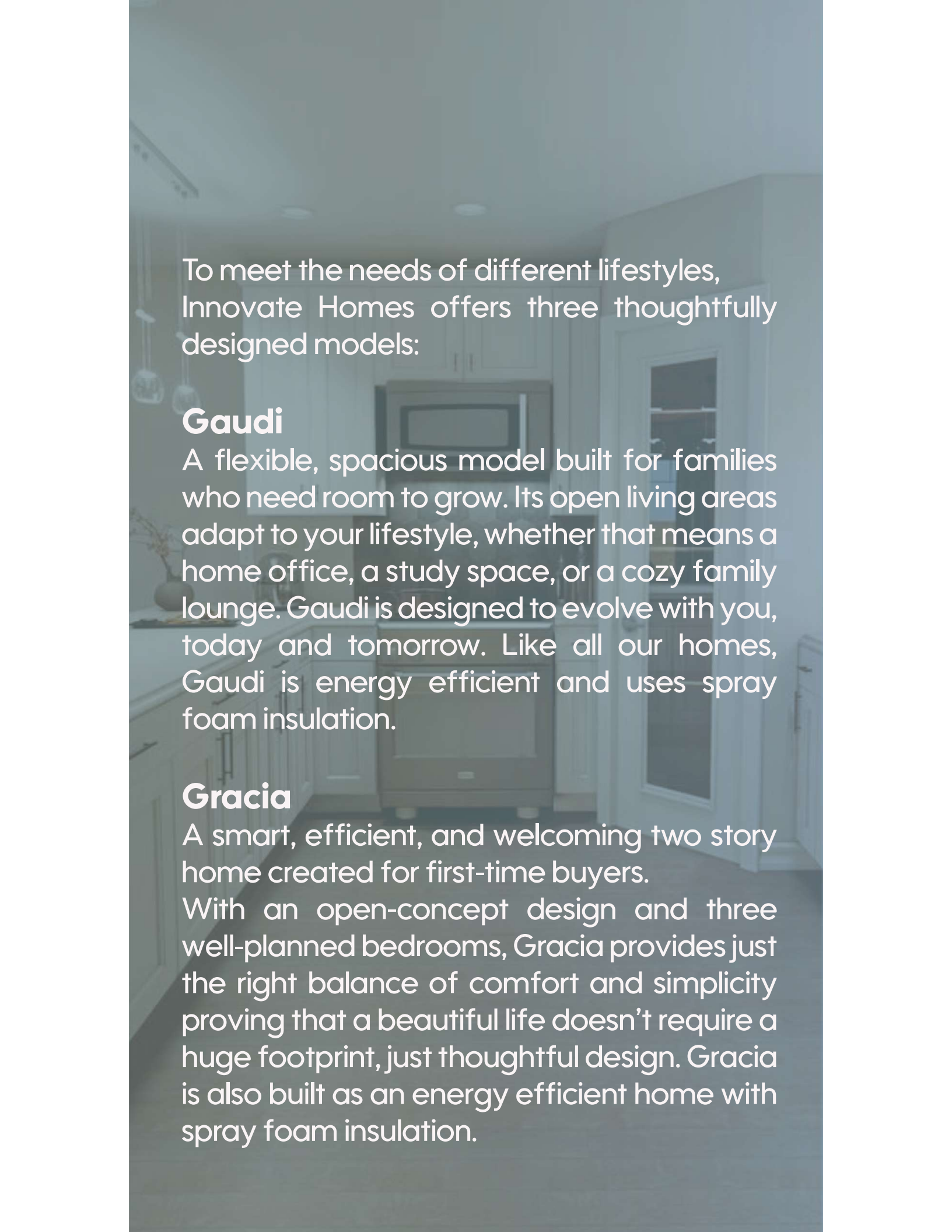
Dream it. Live it. Own it.





At Innovate Homes, we believe a home is more than walls and a roof t's the starting point of a **dream**. It's where families grow, where stories begin, and where everyday life becomes something meaningful. Our mission is simple but powerful: to make homeownership possible again, restoring hope and excitement to a goal that should feel within reach, not out of it. All our homes are energy efficient and built with spray foam insulation for improved comfort and performance.

Barcelona Estates is the first expression of that vision. A private gated community designed for real families and real lives, complete with a clubhouse, swimming pool, and shared green areas that create a true sense of belonging. It's a place where community, comfort, and opportunity come together.

A photograph of a modern kitchen with white cabinetry, a stainless steel refrigerator, and a microwave. The kitchen is well-lit and features a clean, minimalist design. The text is overlaid on the image, providing information about the Gaudi and Gracia home models.

To meet the needs of different lifestyles, Innovate Homes offers three thoughtfully designed models:

Gaudi

A flexible, spacious model built for families who need room to grow. Its open living areas adapt to your lifestyle, whether that means a home office, a study space, or a cozy family lounge. Gaudi is designed to evolve with you, today and tomorrow. Like all our homes, Gaudi is energy efficient and uses spray foam insulation.

Gracia

A smart, efficient, and welcoming two story home created for first-time buyers.

With an open-concept design and three well-planned bedrooms, Gracia provides just the right balance of comfort and simplicity proving that a beautiful life doesn't require a huge footprint, just thoughtful design. Gracia is also built as an energy efficient home with spray foam insulation.

Casa Mila

Our most spacious model, offering 1,685 sq ft of elevated living. With a luxury master suite, soaking tub, walk-in closet, and generous spaces, Casa Mila delivers comfort, elegance, and room to breathe perfect for families seeking a refined and expansive home environment. Casa Mila includes energy efficient construction and spray foam insulation throughout.

Together, these models embody our promise:

If you can dream it, you can live it and now, you can own it.

And this is only the beginning.

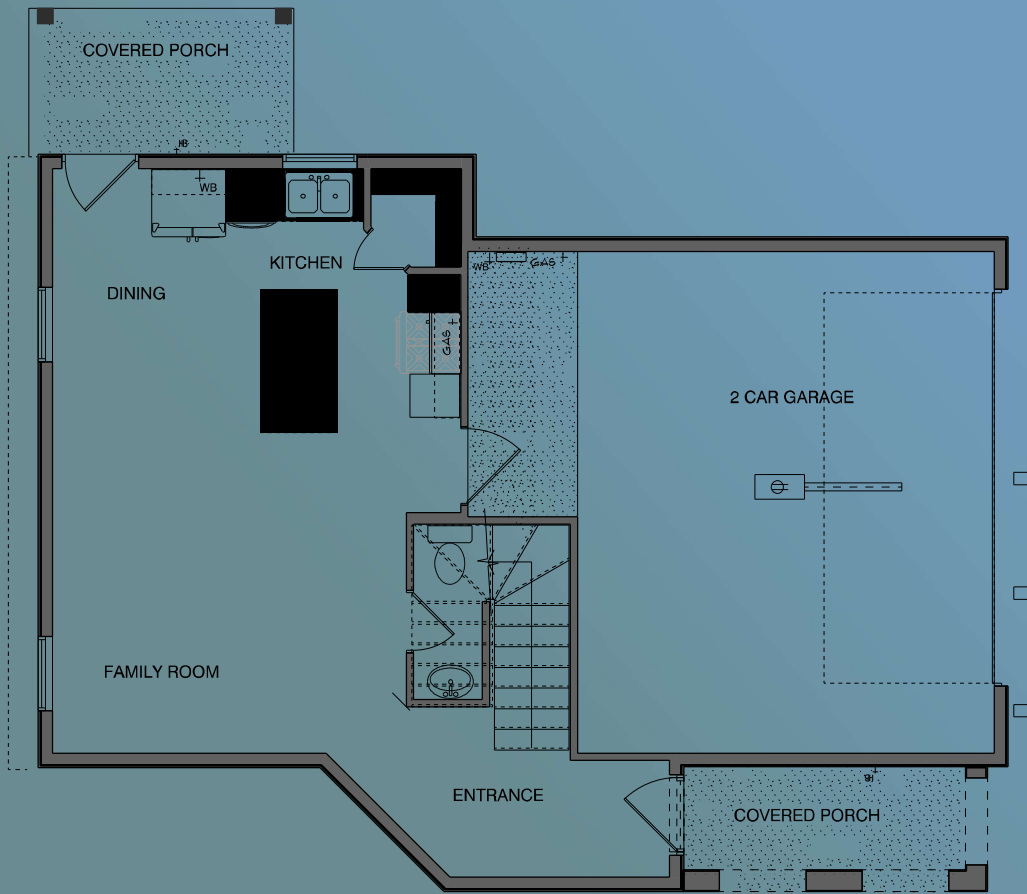
More models and options are coming soon, offering new layouts, features, and possibilities to match the way families in El Paso truly live.

Gaudi

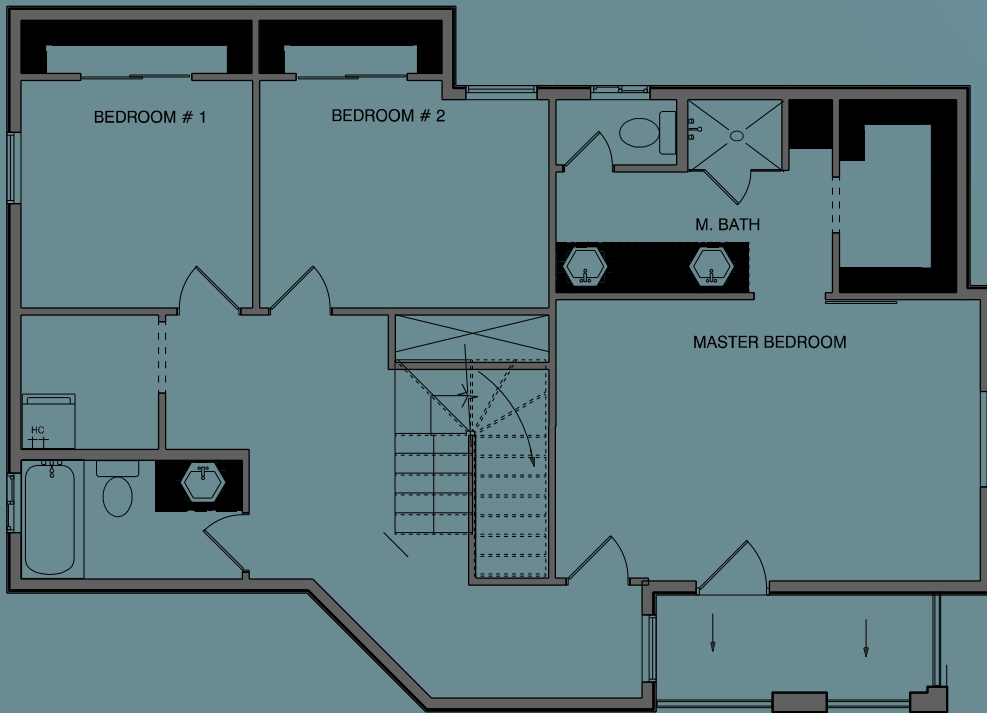
\$275,000



First Floor



Second Floor



A modern living room interior with a light-colored sofa, a dark coffee table, and a dining table with chairs. The room is bright and open-concept, with a large window in the background. The text is overlaid on the image.

A modern home designed for flexibility, comfort, and real family living.

The Gaudi offers a spacious, intelligent layout crafted for families who need versatility and comfort without sacrificing style. With a two-story design, an open social area, this model adapts to your lifestyle today and your plans for tomorrow. All Gaudi homes are energy efficient and include spray foam insulation for improved comfort and performance.

From the welcoming covered porch to the bright family room and open-concept kitchen, every space has been thoughtfully planned to enhance comfort and functionality. The upper floor provides full privacy, featuring three bedrooms and two full bathrooms.

Key Features

✓ Two-story layout

A smart division between shared spaces and private areas.

✓ 3 Bedrooms

Includes a spacious Master Bedroom with private bath, walk-in closet, and access to a front balcony.

✓ 2.5 Bathrooms

Includes a private master bathroom and a shared full bathroom for secondary bedrooms.

✓ Open-concept kitchen

Integrated with dining and living areas, featuring a central island and excellent storage.

✓ Large, bright family room

Designed for gatherings, relaxation, and daily life.

✓ Laundry room upstairs

Conveniently located near all bedrooms.

✓ Two-car garage

With direct access into the home.

Approximate Size

- Total living area: ~1,500 sq ft
- First Level: ~540 sq ft
- Second Level: ~960 sq ft
- Garage : 420 sq ft (2 car garage)

Generous, efficient spaces designed to maximize comfort and livability.

Kitchen & Social Area

Designed for functionality and everyday comfort, the kitchen features a built-in stove and overhead range hood, integrated microwave space, upper and lower cabinetry, a central work island, and an open view to family and dining rooms. Perfect for cooking, entertaining, and sharing moments with family and friends.

Bedrooms Designed for Comfort

Master Bedroom: 10 ft ceilings, spacious layout, walk-in closet, private full bathroom, and access to a beautiful front balcony.

Secondary Bedrooms: well proportioned room sizes, large windows for natural light, and shared access to a full bathroom.

Life in Barcelona Estates

This model is part of Barcelona Estates, a private and secure gated community offering controlled access, a clubhouse for gatherings and events, a community swimming pool, and green areas for recreation and outdoor living a peaceful and connected environment ideal for families.



Location

**12264 Costa Brava
El Paso, TX 79938**

Just minutes from schools, shopping,
restaurants, and main roads.

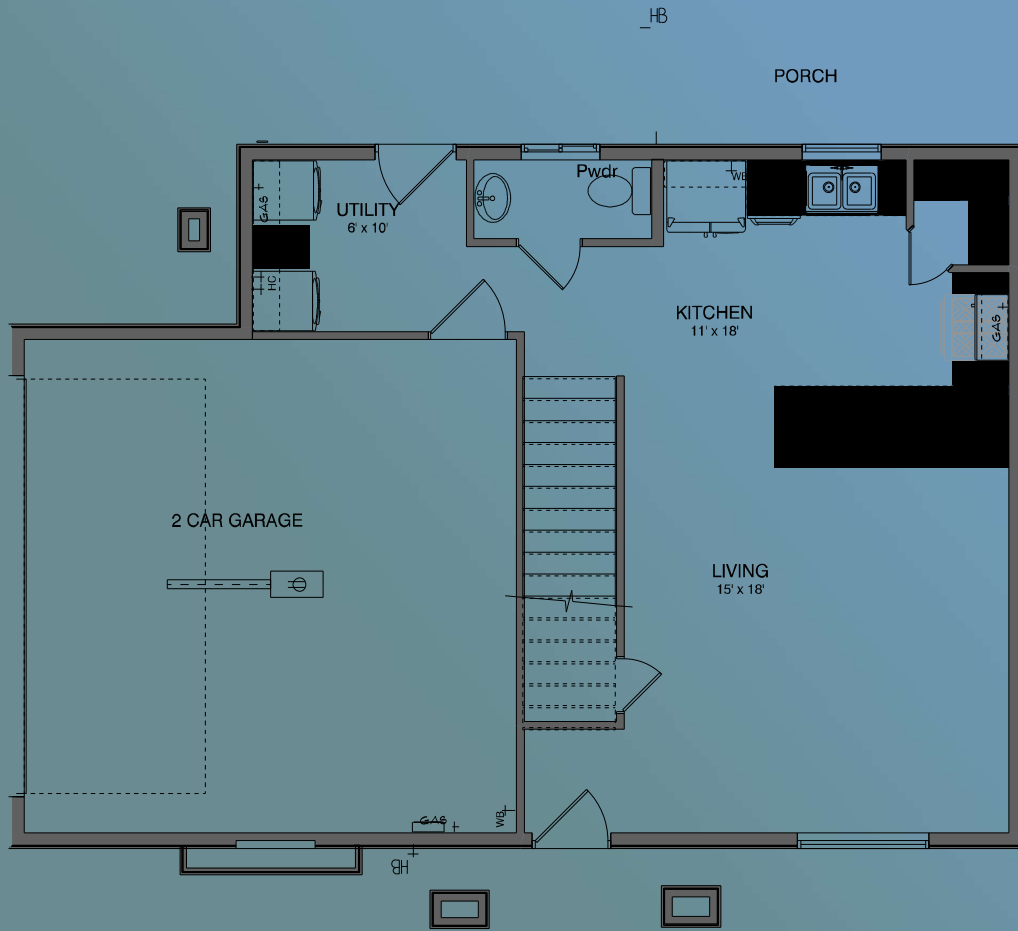


Gracia

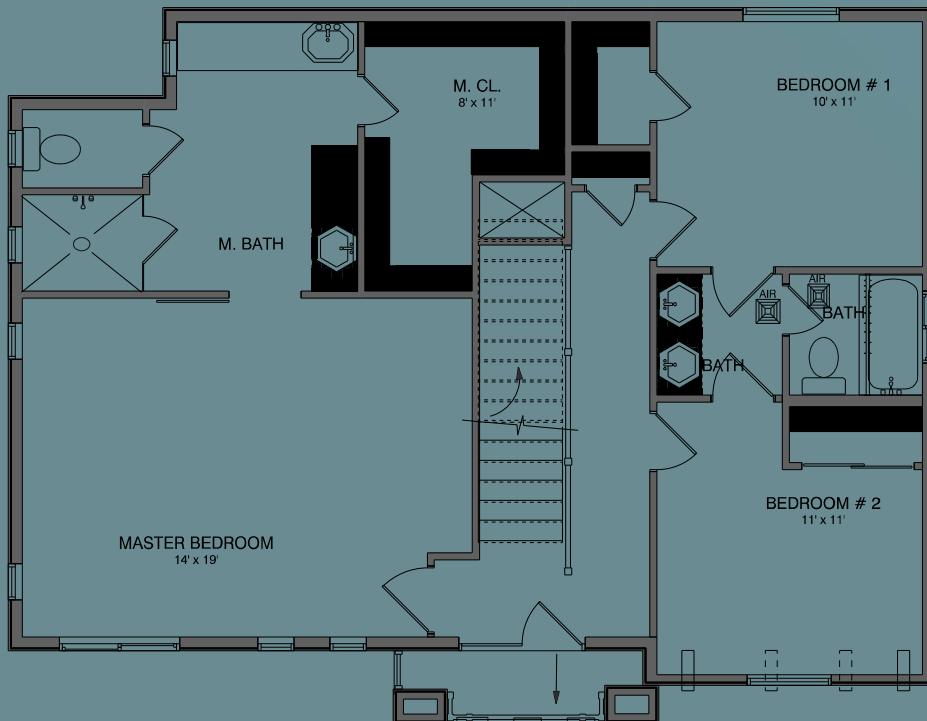
\$285,000



First Floor



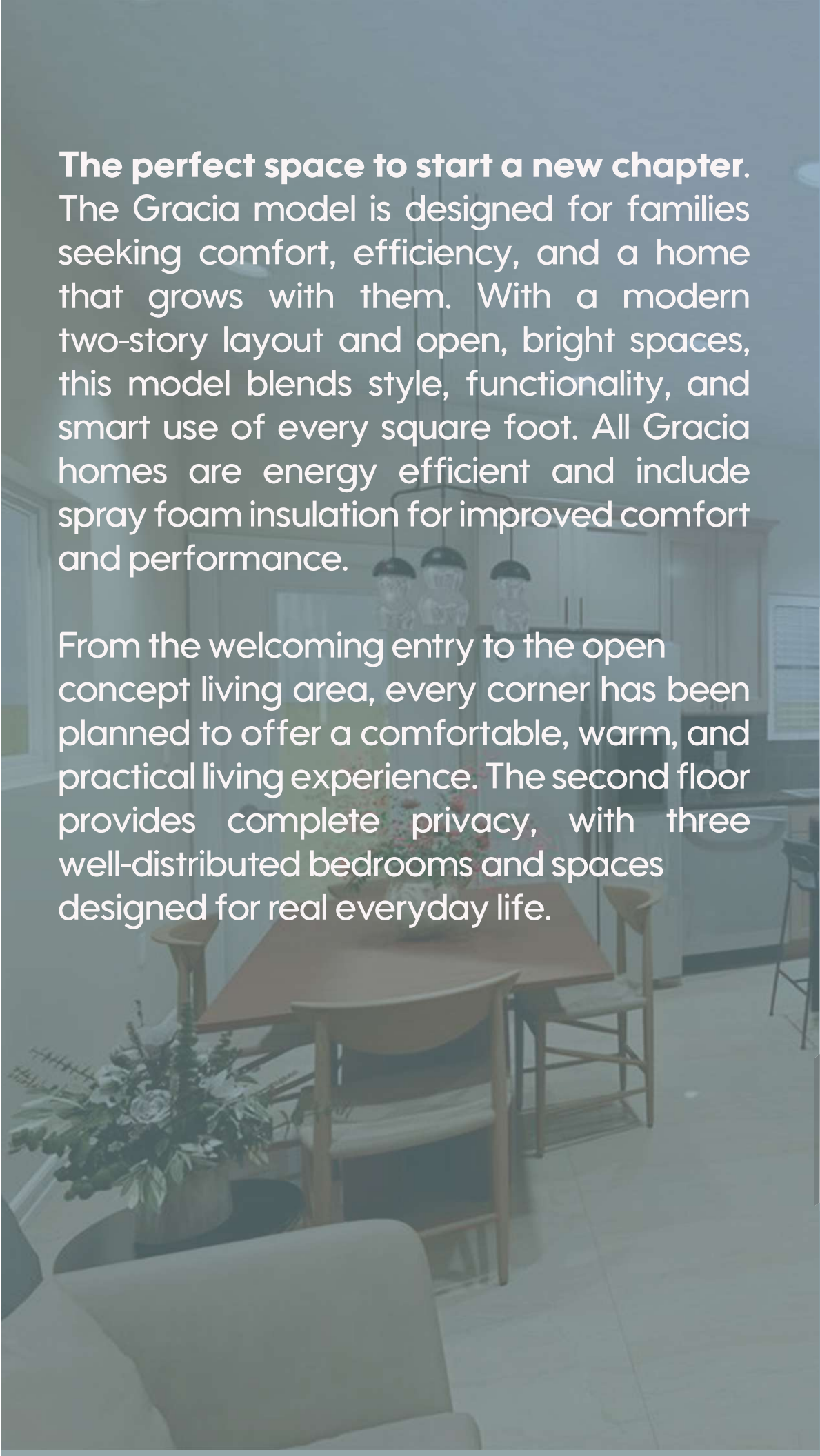
Second Floor



The perfect space to start a new chapter.

The Gracia model is designed for families seeking comfort, efficiency, and a home that grows with them. With a modern two-story layout and open, bright spaces, this model blends style, functionality, and smart use of every square foot. All Gracia homes are energy efficient and include spray foam insulation for improved comfort and performance.

From the welcoming entry to the open concept living area, every corner has been planned to offer a comfortable, warm, and practical living experience. The second floor provides complete privacy, with three well-distributed bedrooms and spaces designed for real everyday life.



Key Features

- ✓ Two-story layout

A modern and functional separation between social and private spaces.

- ✓ 3 Bedrooms

Includes a spacious Master Bedroom with private bath and walk-in closet.

- ✓ 2.5 Bathrooms

Large, functional bathrooms with durable finishes.

- ✓ Open concept kitchen

Designed with a central work area and seamless integration with the family room.

- ✓ Bright family room

A spacious, open area ideal for relaxing, gathering, and creating memories.

- ✓ Laundry room on the second floor

Conveniently located near all bedrooms.

- ✓ Two-car garage

Direct access into the main floor.





Aproximate Size

- Total living area: 1,550 Sq Ft

Every space is designed to optimize functionality and daily comfort.

Kitchen & Social Area

The Gracia kitchen is built for practical everyday cooking and family living. Features include a built-in stove and microwave, upper and lower cabinetry, central prep/work area, space for a standard refrigerator, and an open view to living and dining areas. A layout that allows you to cook, enjoy, and connect all in one place.

Bedrooms Designed for Real Life

Master Bedroom: 10 ft ceilings, spacious and private, walk-in closet, full private bathroom, and natural light through large windows.

Secondary Bedrooms: balanced layout, comfortable dimensions, and access to a shared full bathroom.

Life in Barcelona Estates

Located inside Barcelona Estates, a private residential community offering controlled access, a clubhouse for events, a community swimming pool, and green spaces for recreation.

A peaceful, connected environment designed for families.

 Location

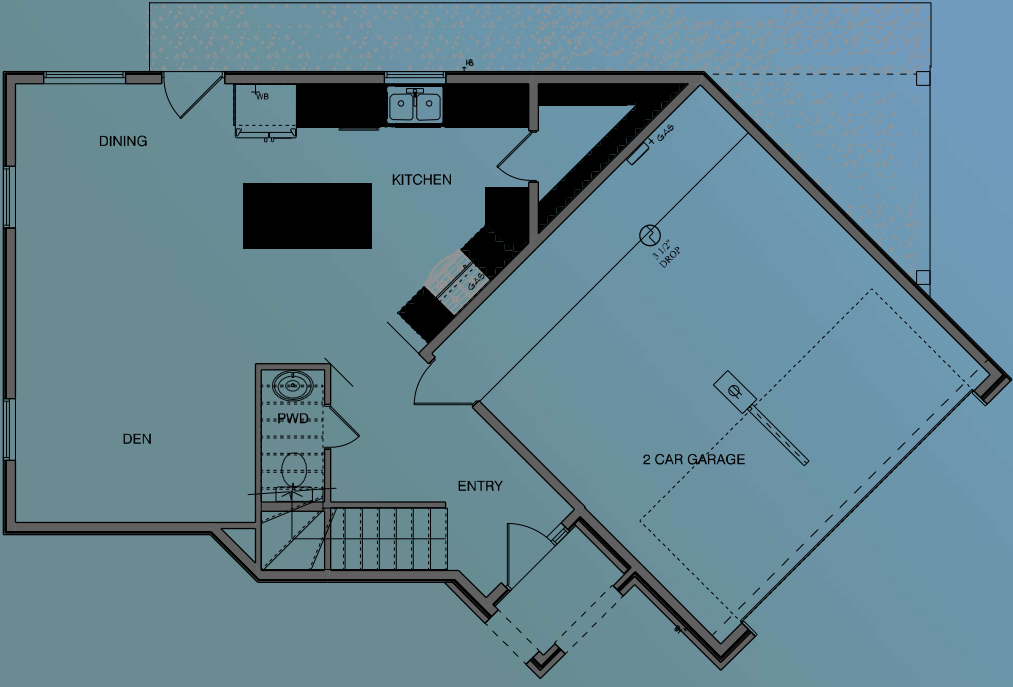
**12262 Costa Brava, El Paso,
TX 79938**

Casa Mila

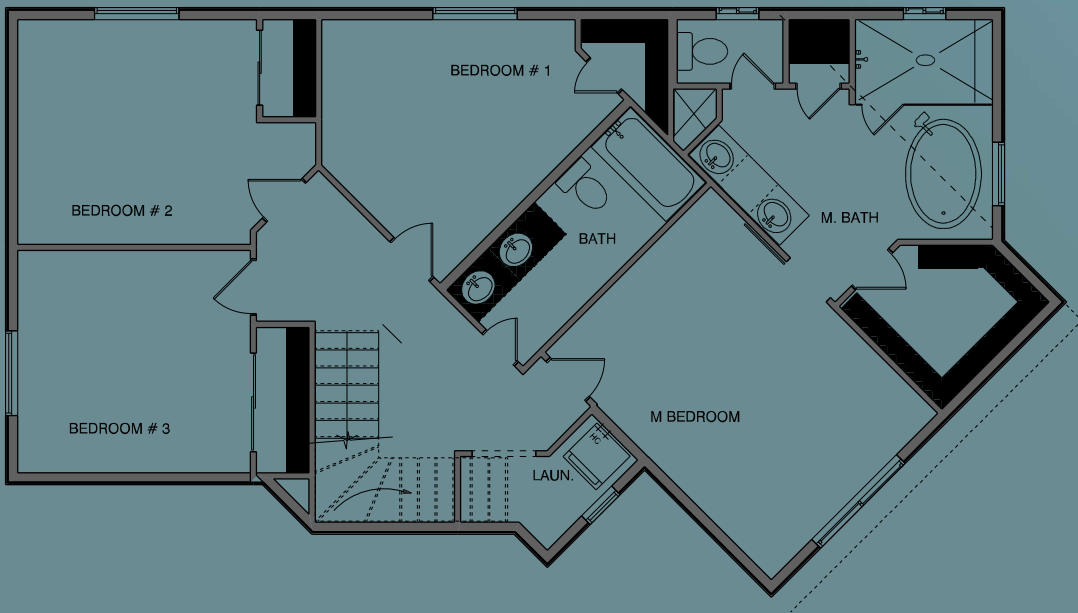
\$295,000




First Floor



Second Floor





Just minutes from schools, shopping, restaurants, and main roads. A spacious and elegant home built for comfort, flexibility, and modern living. The Casa Mila model is designed for families who want generous space, smart circulation, and elevated comfort without losing practicality. With an angled architectural layout that enhances curb appeal and a large family area, Casa Mila stands out as a premium residential option within Barcelona Estates. All Casa Mila homes are energy efficient and include spray foam insulation for improved comfort and performance.

From the unique diagonal garage design to the expansive master suite with a soaking tub and separate shower, every detail has been crafted to provide a refined living experience. The second floor offers privacy and functionality, featuring four bedrooms, two full bathrooms, and a dedicated laundry room.

Key Features

✓ Two-story layout

Thoughtfully separated social and private zones for improved comfort and functionality.

✓ 4 Bedrooms

Spacious rooms including a large Master Bedroom with a luxury bathroom and walk-in closet.

✓ 2.5 Bathrooms

Includes a half bath on the main floor, a shared full bath upstairs, and an upgraded master bath with tub and shower.

✓ Open-concept kitchen

Features a central island, dedicated pantry, and seamless integration with the dining and living areas.

✓ Expansive family room

A bright and open area for gatherings, entertainment, and everyday relaxation.

✓ Laundry room upstairs

Convenience and accessibility right next to all bedrooms.

✓ Two-car garage

Diagonal layout that enhances both curb appeal and driveway functionality.

Approximate Size

- Total living area: 1,685 sq ft
- First Level: 595 sq ft
- Second Level: 1,090 sq ft
- Porch areas included: 50 sq ft total

This makes Casa Mila the most spacious model in the Innovate Homes lineup.

Kitchen & Social Area

The Casa Mila kitchen is designed for practicality, visual flow, and storage efficiency. Key features include a large central island, built-in space for stove and microwave, ample upper and lower cabinetry, window view from the sink area, and direct connection to dining and family rooms. Perfect for cooking, hosting, and everyday family life.

Bedrooms Designed for Enhanced Living

Master Bedroom: Extra large layout, private luxury bathroom, soaking tub plus separate shower, dual-sink vanity, walk-in closet, and large windows for natural light. A private retreat crafted for comfort and relaxation.

Secondary Bedrooms:

Well-sized and evenly distributed, easy access to shared full bathroom, positioned for privacy and quiet.

Life in Barcelona Estates

The Casa Mila model is located within Barcelona Estates, a private gated community offering controlled-access entry, a clubhouse for social events, a community swimming pool, and green areas for families and outdoor activities. A safe, connected, and welcoming environment for long-term living.

Close to schools, shopping centers, dining, and key roadways.

Location

**12262 Costa Brava, El Paso,
TX 79938**



Contact

For more information:

Laura Chavez



(915) 355-2425

Call or WhatsApp



Innovate Homes



innovate.homes



innovate.homes

