

Location of Air Ambulance Resources



Whatcom County Fire Protection District No. 11 (WCFD11)

Lummi Island Fire Department

Station 38

May 3, 1960

79 Votes For
29 Votes Against

“All of Lummi Island, and all tidelands abutting said Island.”

Municipal Corporation of the State

Title 52 RCW FIRE PROTECTION DISTRICTS

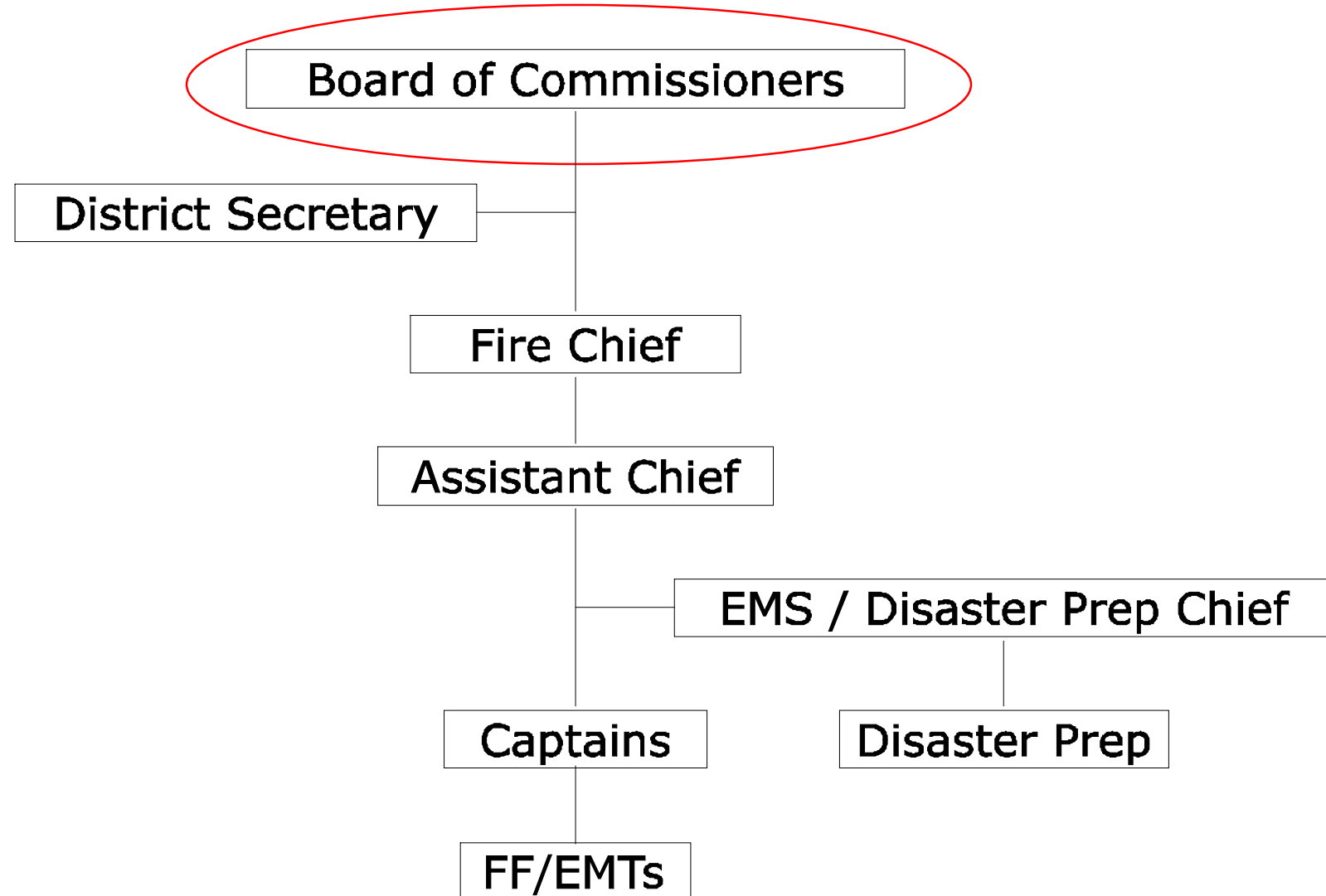
RCW 52.02.020

Districts authorized...

(1) Fire protection districts ***for the provision of fire prevention services, fire suppression services, emergency medical services, and for the protection of life and property*** are authorized to be established as provided in this title.

Chain of Command

Governing Body



Board of Commissioners

Commissioners serve 6 year terms



Bill Lee
Commissioner
Elected 2014

Term Ends 2025



Wendell Terry
Commissioner
Elected 2007

2023



Ed Scott
Commissioner
Elected 2010

2021
Commissioner Scott is resigning
April 14th

RCW 52.14.010

Number—Qualifications—Insurance—Compensation and expenses—Service as volunteer firefighter.

(1) **The affairs of the district shall be managed by a board of fire commissioners** composed initially of three registered voters residing in the district, except as provided otherwise in RCW [52.14.015](#), [52.14.020](#), and [52.14.140](#).

(2)(a) **Each member of an elected board of fire commissioners shall each receive one hundred twenty eight dollars per day or portion thereof, not to exceed twelve thousand two hundred eighty-eight dollars per year, for time spent in actual attendance at official meetings of the board or in performance of other services or duties on behalf of the district.** Members serving in an ex officio capacity on a board of fire commissioners may not receive compensation, but shall receive necessary expenses in accordance with (b) of this subsection.

(b) Each member of a board of fire commissioners shall receive necessary expenses incurred in attending meetings of the board or when otherwise engaged in district business, and shall be entitled to receive the same insurance available to all firefighters of the district: PROVIDED, That the premiums for such insurance, except liability insurance, shall be paid by the individual commissioners who elect to receive it.

(c) **Any commissioner may waive all or any portion of his or her compensation** payable under this section as to any month or months during his or her term of office, **by a written waiver filed with the secretary** as provided in this section. The waiver, to be effective, must be filed any time after the commissioner's election and prior to the date on which the compensation would otherwise be paid. The waiver shall specify the month or period of months for which it is made.

RCW 52.14.100

Meetings—Powers and duties of board.

All meetings of the board of fire commissioners shall be conducted in accordance with chapter 42.30 RCW and a majority constitutes a quorum for the transaction of business. All records of the board shall be open to inspection in accordance with chapter 42.56 RCW. The board has the power and duty to adopt a seal of the district, to manage and conduct the business affairs of the district, to make and execute all necessary contracts, to employ any necessary services, and to adopt reasonable rules to govern the district and to perform its functions, and generally to perform all such acts as may be necessary to carry out the objects of the creation of the district.

Title 42 RCW PUBLIC OFFICERS AND AGENCIES
Chapter 42.30 RCW OPEN PUBLIC MEETINGS ACT

- A ***“meeting”*** is the intent of the Board members in communicating with one another and the nature of such communications.
- If a quorum of the Board communicates on the affairs of the district, the act of communicating constitutes a ***“meeting”*** of the Board.
- A ***“meeting”*** will occur if the members communicate by telephone, radio, e-mail, fax, social media, or other methods including using a third party. (going through the Chief, Secretary or others)
- It is ***not a meeting if the affairs of the District are not communicated***. Community events, other meetings, social gatherings, ect...

Basically no communicating District affairs with other commissioners outside an open public meeting.

RCW 42.30.120

Violations—Personal liability—Civil penalty—Attorneys' fees and costs.

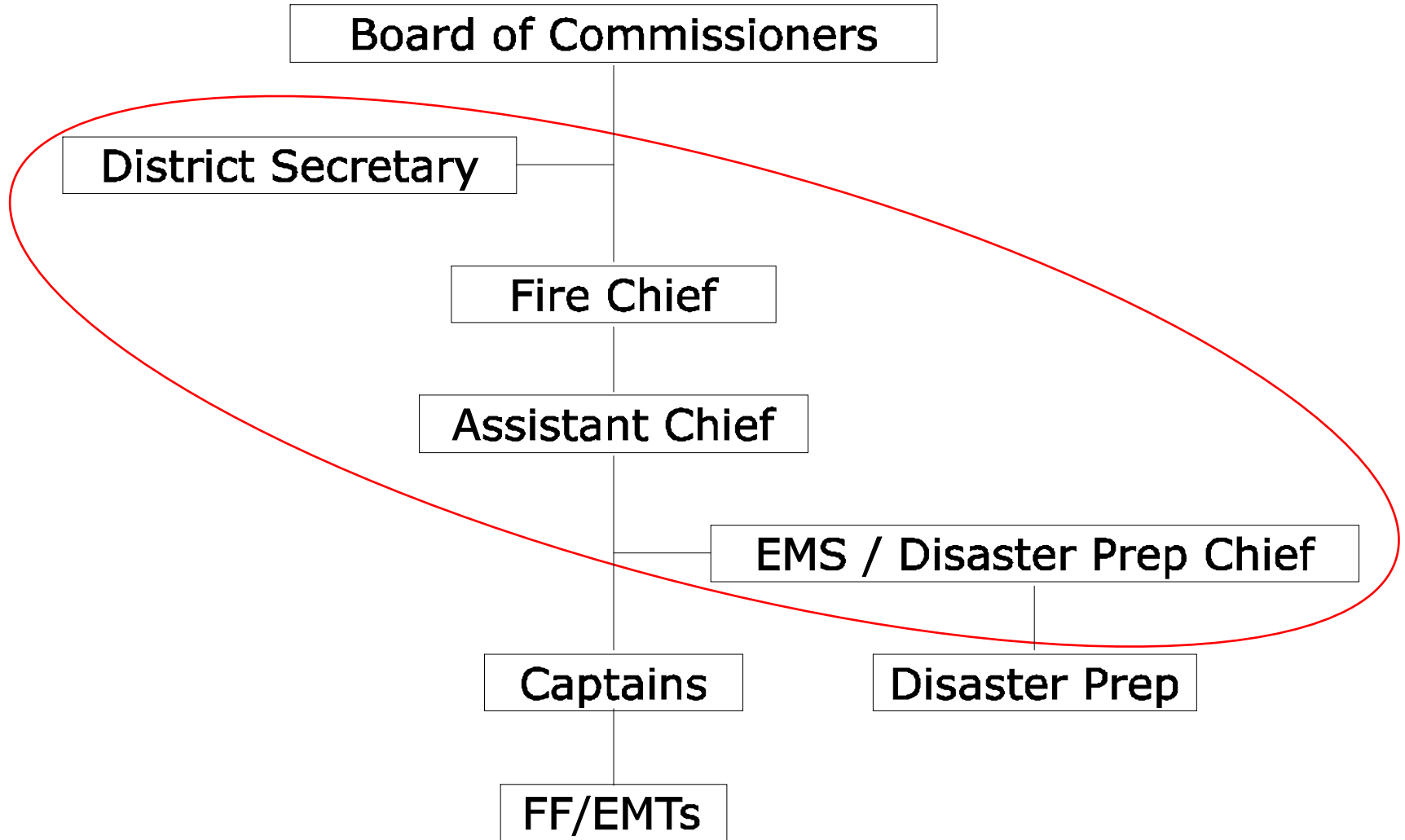
(1) Each member of the governing body who attends a meeting of such governing body where action is taken in violation of any provision of this chapter applicable to him or her, with knowledge of the fact that the meeting is in violation thereof, shall be subject to personal liability in the form of **a civil penalty in the amount of five hundred dollars for the first violation.**

(2) Each member of the governing body who attends a meeting of a governing body where action is taken in violation of any provision of this chapter applicable to him or her, with knowledge of the fact that the meeting is in violation thereof, and who was previously assessed a penalty under subsection (1) of this section in a final court judgment, shall be subject to personal liability in the form of a **civil penalty in the amount of one thousand dollars for any subsequent violation.**

(3) The civil penalty shall be assessed by a judge of the superior court and an **action to enforce this penalty may be brought by any person.** A violation of this chapter does not constitute a crime and assessment of the civil penalty by a judge shall not give rise to any disability or legal disadvantage based on conviction of a criminal offense.

(4) **Any person who prevails** against a public agency in any action in the courts for a violation of this chapter **shall be awarded all costs, including reasonable attorneys' fees,** incurred in connection with such legal action. Pursuant to RCW [4.84.185](#), any public agency which prevails in any action in the courts for a violation of this chapter may be awarded reasonable expenses and attorney fees upon final judgment and written findings by the trial judge that the action was frivolous and advanced without reasonable cause.

Chain of Command



Administration



RCW 52.14.080

Chair—Secretary—Duties and oath.

The fire commissioners shall elect a chair from their number and shall **appoint a secretary of the district**, who may or may not be a member of the board, for such term as they shall by resolution determine. The secretary, if a member of the board, shall not receive additional compensation for serving as secretary.

The secretary of the district **shall keep a record of the proceedings of the board**, shall **perform other duties as prescribed by the board or by law**, and shall **take and subscribe an official oath similar to that of the fire commissioners** which oath shall be filed in the same office as that of the commissioners.

Joined in 2007

Appointed District Secretary and Financial Officer 2012

Part Time 70 hrs month.



Duncan McLane

Fire Chief
Member since 1989

Joined in 1989
Appointed Chief in 2002
Full Time in 2012



Michael Lish

Assistant Fire Chief
Member since 2004

Joined in 2004
Full Time Training Officer 2013
Assistant Chief 2014

Pulls shifts at other districts to maintain and build skills
President Whatcom County Training Officers 18 - 20
Drill Master Whatcom County Recruit Academy 18 & 19



John Granger

EMS Division Chief
Member since 1977

Joined 1977
EMS Division Chief 2009
Disaster Prep. Founder 2005
Disaster Prep Division Chief 2019
Monthly Stipend

Labor & Industries Safety Standards For Firefighters

Chapter 296-305 WAC

- 296-305-01001 Foreword.
- 296-305-01003 Scope and application.
- 296-305-01005 Definitions.
- 296-305-01007 Variance and procedure.
- 296-305-01501 **Injury and illness** reports for firefighters.
- 296-305-01503 Accident/incident investigation.
- 296-305-01505 **Accident prevention** program.
- 296-305-01507 Fire department health and safety officer.
- 296-305-01509 Management's responsibility.
- 296-305-01511 Employee's responsibility.
- 296-305-01513 **Safe place standards.**
- 296-305-01515 First-aid training and certification.
- 296-305-01517 First-aid kits.
- 296-305-02001 **Personal protective equipment and protective clothing.**
- 296-305-02002 Structural firefighting clothing (SFF).
- 296-305-02004 Protection ensemble for structural firefighting.
- 296-305-02012 Body armor.
- 296-305-02017 Personal alert safety system (PASS) protection.
- 296-305-02019 Life safety ropes, harnesses, and hardware protection.
- 296-305-02501 Emergency medical protection.
- 296-305-03002 **Hazardous materials.**
- 296-305-04001 Respiratory equipment protection.
- 296-305-04501 **Automotive fire apparatus** design and construction.
- 296-305-04503 Automotive fire apparatus equipment.
- 296-305-04505 Automotive apparatus operational rules.
- 296-305-04507 Fire apparatus maintenance and repair.
- 296-305-04510 Aerial apparatus.
- 296-305-05000 **Incident management.**
- 296-305-05002 Fire suppression.
- 296-305-05004 Occupational exposure to heat and cold stress.
- 296-305-05013 Aircraft rescue and firefighting.
- ~~296-305-05101 Technical rescue general requirements.~~
- ~~296-305-05103 Technical rescue training.~~
- ~~296-305-05105 Technical rescue standard operating procedure.~~
- ~~296-305-05107 Technical rescue incident response planning.~~
- ~~296-305-05109 Technical rescue equipment.~~
- ~~296-305-05111 Technical rescue safety.~~
- ~~296-305-05113 Technical rescue operational specialties.~~
- 296-305-05502 **Training and member development.**
- 296-305-06001 **Fire service equipment.**
- 296-305-06003 Testing fire service equipment.
- 296-305-06006 Ground ladders.
- 296-305-06008 Electrical.
- 296-305-06501 Requirements for **fire department facilities.**
- 296-305-06503 General requirements.
- 296-305-06505 Sanitation, disinfection, cleaning, and storage areas.
- 296-305-06507 Sleeping areas.
- 296-305-06509 Apparatus areas.
- 296-305-06511 Indoor air quality.
- 296-305-06513 Refueling areas.
- 296-305-06515 Hose drying towers.
- 296-305-06517 Drill tower training facilities.
- 296-305-06519 Fire station equipment and tools.
- 296-305-07001 **Wildland fire operations.**
- 296-305-07002 Wildland fire personnel accountability.
- 296-305-07004 Heat-related illness prevention for wildland firefighters.
- 296-305-07006 Equipment for wildland firefighting.
- 296-305-07008 Aircraft operations for fighting wildland fires.
- 296-305-07010 Training for wildland firefighting.
- 296-305-07012 Personal protective clothing and equipment for wildland firefighting.
- 296-305-07014 Apparatus standards for wildland firefighting.
- 296-305-07016 Falling and equipment in forest lands.
- 296-305-07018 Occupant restraints and enclosures for wildland firefighting.

Washington State Department of Health

Emergency Medical Services (EMS) and Trauma Care System

Chapter 246-976 WAC

EMERGENCY MEDICAL SERVICES AND TRAUMA CARE SYSTEMS

246-976-001 Purpose

246-976-010 Definitions.

TRAINING

246-976-022 EMS training program requirements, approval, reapproval, discipline.

246-976-023 Initial EMS training course requirements and course approval.

246-976-024 EMS specialized training.

246-976-031 Senior EMS instructor (SEI) approval.

246-976-032 Senior EMS instructor (SEI) reapproval of recognition.

246-976-033 Denial, suspension, modification or revocation of SEI recognition.

246-976-041 To apply for training.

CERTIFICATION

246-976-141 To obtain initial EMS provider certification following the successful completion of Washington state approved EMS course.

246-976-142 To obtain reciprocal (out-of-state) EMS certification, based on a current out-of-state or national EMS certification approved by the department.

246-976-143 To obtain EMS certification by challenging the educational requirements, based on possession of a current health care providers credential.

246-976-144 EMS certification.

246-976-161 General education requirements for EMS provider recertification.

246-976-162 The CME method of recertification.

246-976-163 The OTEP method of recertification.

246-976-171 Recertification, reversion, reissuance, and reinstatement of certification.

246-976-182 Authorized care—Scope of practice.

246-976-191 Disciplinary actions.

LICENSURE AND VERIFICATION

246-976-260 Licenses required.

246-976-270 Denial, suspension, revocation.

246-976-290 Ground ambulance vehicle standards.

246-976-300 Ground ambulance and aid service—Equipment.

246-976-310 Ground ambulance and aid service—Communications equipment.

246-976-320 Air ambulance services.

246-976-330 Ambulance and aid services—Record requirements.

246-976-340 Ambulance and aid services—Inspections and investigations.

246-976-390 Trauma verification of prehospital EMS services.

246-976-395 To apply for initial verification or to change verification status as a prehospital EMS service.

246-976-400 Verification—Noncompliance with standards.

TRAUMA REGISTRY

246-976-420 Trauma registry—Department responsibilities.

246-976-430 Trauma registry—Provider responsibilities.

DESIGNATION OF TRAUMA CARE FACILITIES

246-976-580 Trauma designation process.

246-976-700 Trauma service standards.

246-976-800 Trauma rehabilitation service standards.

SYSTEM ADMINISTRATION

246-976-890 Interhospital transfer guidelines and agreements.

246-976-910 Regional quality assurance and improvement program.

246-976-920 Medical program director.

246-976-930 General responsibilities of the department.

246-976-935 Emergency medical services and trauma care system trust account.

246-976-940 Steering committee.

246-976-960 Regional emergency medical services and trauma care councils.

246-976-970 Local emergency medical services and trauma care councils

246-976-990 Fees and Fines

Washington State Department of Health

Emergency Medical Services (EMS) and Trauma Care System

Chapter 18.73 RCW

EMERGENCY MEDICAL CARE AND TRANSPORTATION SERVICES

- 18.73.010 Legislative finding.
- 18.73.020 Supersession of local regulation.
- 18.73.030 Definitions.
- 18.73.081 Duties of secretary—Minimum requirements to be prescribed.
- 18.73.101 Variance from requirements.
- 18.73.120 Certificate of advanced first aid qualification.
- 18.73.130 Ambulance services and aid services—Licensing.
- 18.73.140 Ambulance and aid vehicles—Licenses.
- 18.73.145 Ambulance and aid vehicles—Self-inspection program.
- 18.73.150 Ambulance personnel requirements.
- 18.73.155 Requirements—Military training or experience.
- 18.73.170 Aid vehicles—Personnel—Use.
- 18.73.180 Other transportation vehicles.
- 18.73.190 Violations—Penalties.
- 18.73.200 Administrative procedure act applicable.
- 18.73.240 Application of uniform disciplinary act.
- 18.73.250 Epinephrine—Availability—Administration.
- 18.73.260 Guidelines.
- 18.73.270 Disclosure of information by emergency medical personnel—Violent injuries—Immunity.
- 18.73.280 Ambulance service—Transport of patients to a nonmedical facility.
- 18.73.910 Effective dates—1973 1st ex.s. c 208.

Chapter 70.168 RCW

STATEWIDE TRAUMA CARE SYSTEM

- 70.168.010 Legislative finding.
- 70.168.015 Definitions.
- 70.168.020 Steering committee—Composition—Appointment.
- 70.168.030 Analysis of state's trauma system—Plan.
- 70.168.040 Emergency medical services and trauma care system trust account.
- 70.168.050 Emergency medical services and trauma care system—Department to establish—Rule making—Gifts.
- 70.168.060 Department duties—Timelines.
- 70.168.070 Provision of trauma care service—Designation.
- 70.168.080 Prehospital trauma care service—Verification—Compliance—Variance.
- 70.168.090 Statewide data registry—Statewide electronic emergency medical services data system—Quality assurance program—Confidentiality.
- 70.168.100 Regional emergency medical services and trauma care councils.
- 70.168.110 Planning and service regions.
- 70.168.120 Local and regional emergency medical services and trauma care councils—Power and duties.
- 70.168.130 Disbursement of funds to regional emergency medical services and trauma care councils—Grants to nonprofit agencies—Purposes.
- 70.168.135 Grant program for designated trauma care services—Rules.
- 70.168.140 Prehospital provider liability.
- 70.168.150 Emergency cardiac and stroke care system—Voluntary hospital participation.
- 70.168.160 Report to the legislature.
- 70.168.170 Ambulance services—Work group—Patient transportation—Mental health or chemical dependency services.
- 70.168.900 Short title.

Department Policies

ORGANIZATION AND ADMINISTRATION

Organizational Structure
Emergency Action Plan
Payroll
Training
Credit Card
Travel
Claims
Communications
Post Incident Analysis
Solicitation of Funds

GENERAL OPERATIONS

Incident Management
Emergency Response
Fire Ground Accountability
Rapid Intervention/Two-in Two-Out
Tactical Withdrawal
Response Time Standards
Aircraft Operations
Staging
CO Activations
Safe Haven for Newborns
Hazardous Materials
New Media
Scene Preservation
Child Abuse Reporting
Disposition of Valuables
Carrying Weapons On-Duty
Performance of Duties
Adult Abuse
Traffic Collisions
Line of Duty Death and Serious Injury
National Fire Incident Reporting System
Active Shooter and Other Violent Incidents

2013 project to replacing
30+ year old outdated policies
450 page template
Ongoing to fit District 11 Operations

TRAINING

Fire Equipment Driver/Operator
Cardiopulmonary Resuscitation (CPR)
Automatic External Defibrillator (AED)
Bloodborne Pathogen
Emergency Action Plan
Fire Prevention Plan
Hazard Communication Program
Hazardous Materials (HAZMAT)
Hearing Loss Prevention
Noise Control
Heat Illness Prevention
Health Insurance Portability and Accountability Act (HIPAA)
National Incident Management System
Respiratory Protection
Discriminatory Harassment
Wildfire Shelter Deployment
Training Records
Fire Training
Firefighter Health, Safety and Survival

EMERGENCY MEDICAL SERVICES

Patient Care Reports
Medical Supplies
Patient Refusal of Pre-Hospital Care
Advanced Health Care Directives
Latex Sensitivity
Controlled Substance

RECORDS MANAGEMENT

Records Management
Release of Records
Subpoenas
Patient Medical Record Security and Privacy

EQUIPMENT AND TECHNOLOGY

Use of District Owned and Personal Property
Personal Communication Devices
Personal Electronic Device Policy
Apparatus Inspections, Testing, Repair, and Maintenance
Use of District Vehicles
Information Technology Use
Mobile Data Terminal Use
Communications Operations
Photography and Electronic Imaging
Public Alerts
Non-Official Use of District Property
Apparatus and Specialized Equipment Standards

Department Policies cont..

SAFETY

Accident, Illness and Injury Prevention Program (AIIPP)
Division of Occupation Safety and Health (DOSH) Inspections
Washington DOSH Notification of Injury or Death
Communicable Diseases
High-Visability Vests
Apparatus/Vehicle Backing
Heat Illness Prevention Program
Respiratory Protection Program
Personal Alert Safety System (PASS) Devices
Health and Safety Officer
Vehicle Seat Belts
Fire Station Safety
Ground Ladders
Automatic External Defibrillators (AED)
Personal Protective Equipment
Hazardous Energy Control
Hazard Communication

PERSONNEL

Recruitment and Selection
Performance Evaluations
Promotions and Transfers
Position Descriptions
Classification Specifications
Career Tracks
Fire Officer Development
Educational Incentives'
Tuition Reimbursement
Reporting for Duty
Emergency Recall
Overtime Compensation Requests
Discriminatory Harassment
Conduct and Behavior
Personnel Complaints
Outside Employment
Personal Projects on Duty
Personnel Records
Commendations and Meritorious Service
Grievance Procedure
Wellness and Fitness Program
Physical Fitness
Critical Incident Stress Debriefing
Workplace Violence

FACILITIES

Facility Security
Emergency Power
Waste Water Discharge
Flag Display
Standardization of Station Files

Lactation Breaks
Smoking and Tobacco Use
Drug and Alcohol Free Workplace
Personal Appearance Standards
Uniform Regulations
Badges
Identification Cards
Work-Related Illness and Injury Reporting
Temporary Modified-Duty Assignments
Release of HIPAA-Protected Information
Return to Work
Line-of-Duty-Death
Line-of-Duty-Death and Serious Injury Notification
Family Support Liaison
Family and Medical Leave
Military Leave
Drivers License Requirements
Nepotism and Conflicting Relationships
Social Media/Imagery
Member Speech, Expression and Social
Networking
Anti-Retaliation
Sick Leave

Policies and Procedures

- Fire Commissioners have the responsibility to see that the district is properly governed and managed.
- In order for a board to fulfill this function it must establish and enforce policies and procedures
- Secretary and Chief assist the board in developing policies and in the day to day implementation of the policies.
- Federal and state laws require that fire protection districts establish written policies or procedures.
- Federal and state regulatory agencies regulations require fire districts to establish and maintain written policies.
- Washington State Auditor recommends, and in some areas requires written policies
- Insurance companies require or recommend, that districts establish and enforce written policies and procedures.
- To effectively engage in risk management and to reduce the areas of liability exposure

Volunteer Selection Process

- Attend 3 training sessions > Observation Only
- Receive Application and continue to attend training
- Application to be reviewed by Chief.
- Meeting with Chief, applicant, and applicant's Spouse/Significant other

PRE-ACCEPTED / NOT ACCEPTED

- Bunker Gear Issued to participate in Training
- Pre-Acceptance physical and instructions to obtain background check (30 – 60 days)

ACCEPTED / NOT ACCEPTED

- Post Acceptance physical and vaccinations
- Pre-response Orientation Class (60 hours + self-study + equipment locations)
- Written and practical evaluation by Chief or designee
- Pager, Plates Issued For Responding

Initial Training

FIRE

A) Whatcom County Recruit Academy

3 months

Tuesday & Thursday evenings

1 day each weekend

Britton Loop

B) In House

200+ hours in 12 months

MEDICAL

Emergency Medical Technician

3 months

Tuesday & Thursday evenings

1 day each weekend

Bellingham or Everson

Ongoing Training

(Avg 4 - 5 hours week)

Three 2 hour Thursday evenings per month

2-3 6 hour Saturdays per year

1 - 4 hour session each month

Monthly Truck and Equipment Inspections 2 hrs

What-Com 9-1-1

Fire Agency Radio System (FARS)
Chief's Association



Decreasing Reliability

- FCC requirements
- Aging infrastructure



Fire and EMS Dispatch
Prospect
Secondary 9-1-1 call takers

I am Responding



New alternate
notification system
being implemented
county wide

WCFD11



Text & App

Initial Attack 38

EQUIPMENT

- 2 Self Contained Breathing App.
- Rapid Intervention Air
- Thermal Imaging Camera
- 4 gas detector
- Portable Radios
- Air tools for Extrication
- Wildland Hand tools
- Landing zone light kit
- 2 Small ladders
- Ventilation fan
- Utility Rope



EQUIPMENT

- Portable Pump
- Chain Saw
- Battery Pole Saw
- Portable Hydraulic Pump
- Hydraulic Cutter/Spreader
- Cribbing
- 20 ton jack
- Cordless saws, impact driver and drill
- Medical and Trauma response bags
- 300 feet 3 inch hose
- 400 foot 1-3/4 hose

- 2007 4X4 Gross Vehicle Weight 19,500 pounds IN SERVICE 19,500 pounds
- 250 gallon per minute pump with Compressed Air Foam System (CAFS).
- 270 gallons of water
- First out apparatus for all fire, accidents and other hazardous responses.
- Doubles as our Command Post on medical aid calls for logistics management.

Engine 38

EQUIPMENT

- 8 Self Contained Breathing App.
- Portable Radios
- Small Haz Mat kit
- Pet resuscitation kit
- Landing Zone light kit
- Portable Pump
- Portable Scene Light
- Extrication tools
- Air powered Sawzall
- Large CO2 Extinguisher
- Large ABC Extinguisher



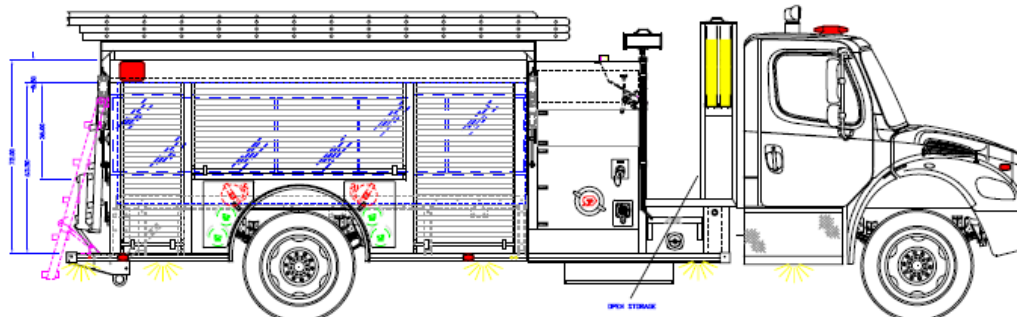
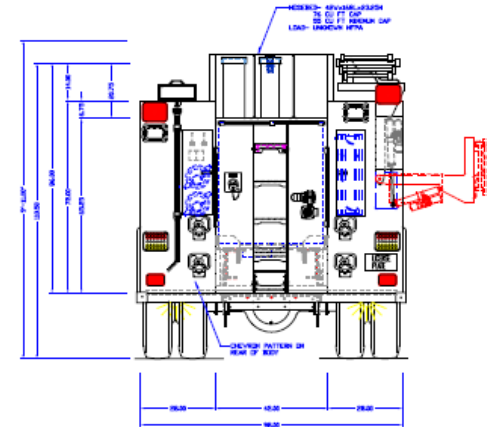
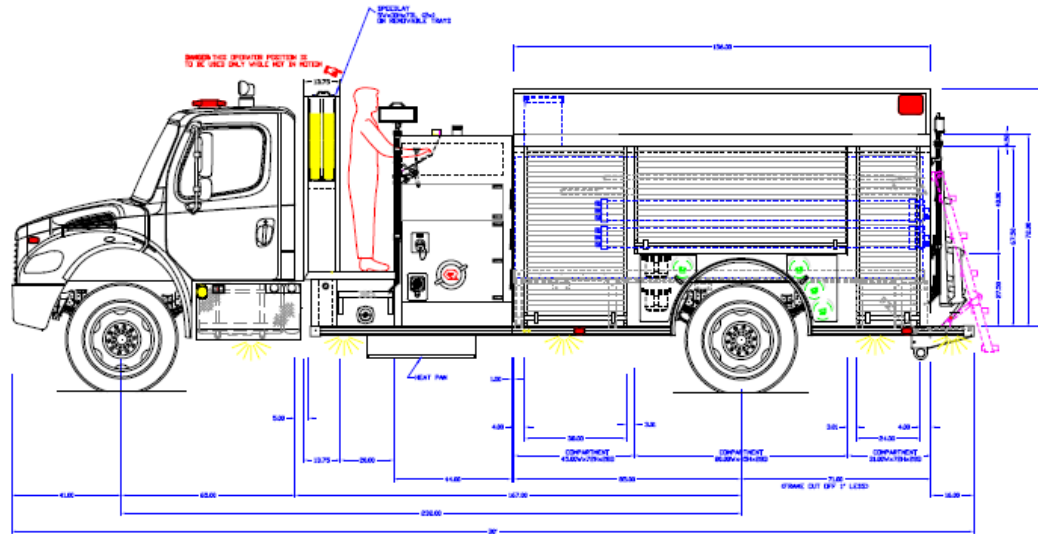
EQUIPMENT

- Wildland Hand tools
- Hylift Jacks
- Overhaul tools
- Misc. hose fittings and adapters
- 800 feet 3 inch hose
- 1,400 feet 4 inch hose
- 600 feet 1-3/4 inch hose
- 35 foot 3 section extension ladder
- 24 foot 2 section extension ladder
- 16 foot roof ladder

- 1996 Freightliner Gross Vehicle Weight 34,700 pounds IN SERVICE 28,520 pounds
- 1250 gallon per minute pump with CAFS.
- 1000 gallons of water
- Second out apparatus on all fire, accidents and other hazardous responses

Engine 38 replacement ordered April 9, 2019
 Estimated Delivery Date: May 29, 2020

\$431,926.00



- NOTES:
1. OVERALL HEIGHT IS IN LOADED CONDITION. UNLOADED HEIGHTS MAY BE 4" ABOVE HEIGHTS SHOWN.
 2. DO NOT SCALE DRAWING.
 3. ALL DIMENSIONS ARE APPROXIMATE AND SUBJECT TO ENGINEERING CHANGES.
 4. DRAWING MAY OR MAY NOT SHOW ALL ITEMS AS DESCRIBED IN THE WRITTEN DETAIL SPECIFICATIONS.
 5. INCLUSION OF AN ITEM ON THE DRAWING DOES NOT CONSTITUTE INCLUSION OF THAT ITEM WITH THE FINAL DELIVERED UNIT.
 6. THE EFFECTIVE DOOR OPENINGS WILL BE APPROX. 2" LESS THAN THE NOTED COMPARTMENT OPENING FOR ROLL UP DOORS AND UP TO APPROX. 4" LESS FOR HINGED DOORS

INITIALS: ___
 JOB NUMBER: 18053
 DATE: ___

MAIN FILE: ___
 DEPT: ___
 DEALER: ___

PRODUCTION APPROVED

APPROVED BY:

CHASSIS: FREIGHTLINER 2DR
 PUMP: WATEROUS 1250 GPM
 TANK: POLY/1000/20(FOAM)
 PANEL MATL: LINE X
 COMP INTERIOR: NATURAL

REVISED: RAN	DATE: 4/19/19
REVISED: BVZ	DATE: 4/8/19
REVISED: BVZ	DATE: 4/2/19
REVISED: BVZ	DATE: 3/19/19
REVISED: BVZ	DATE: 11/12/18
REVISED: BVZ	DATE: 10/30/18
REVISED: BVZ	DATE: 8/30/17
DRAWN: BVZ	DATE: 8/11/17

PROPRIETARY AND CONFIDENTIAL
 THE INFORMATION CONTAINED IN THIS DRAWING IS THE SOLE PROPERTY OF ROSENBAUER. ANY REPRODUCTION IN PART OR AS A WHOLE WITHOUT THE WRITTEN PERMISSION OF ROSENBAUER IS PROHIBITED.

MAXIMUM HEIGHT	10' 6"
MAXIMUM LENGTH	30' 6"
BODY WIDTH	98"

Comparing the Scrap vs. Resale vs Reserve value to the District, Board of Commissioners have decided to keep the 1996 as a 2nd Engine

WHATCOM CO. 11, WA

ROSENBAUER S.S. CT

WHATCOM CO. 11, WA4

Tender 38

EQUIPMENT

2 Self Contained Breathing App.
Portable Radios
400 feet 1-1/2 inch hose
300 feet 2-1/2 inch hose
1,050 feet 4 inch hose
3,000 gallon folding tank
16 foot roof ladder
24 foot extension ladder
Misc. hose fittings and adapters



- 2000 Freightliner Gross Vehicle Weight 56,000 pounds IN SERVICE 40,080 pounds
- 750 gallon per minute pump.
- 2000 gallons of water
- Third out apparatus on all fires.

Aid 38

EQUIPMENT

Trauma/ Medical response bag
Airway Bag
Automatic External Defibrillator
Folding Stair Chair
Immobilization devices
Landing Zone light kit
Infectious Disease suits
Mass Casualty Triage kit
Portable Suction
Mechanical Chest Compressor



EQUIPMENT

Heart Monitor
Carbon Monoxide Monitor
Carbon Dioxide Monitor
Oxygen Monitor
Portable Scene Light
BLS Medications
Assorted Bandaging
Tourniquets
Supraglottic Airways

- 2010 Dodge Ram 4x4
- Licensed for BLS transport
- First out on Trauma and Medical calls,
- Fourth out apparatus on all fires for Rehab and Firefighter injury.

Utility 38



- 2006 Ford F-150 Utility Pick-up.
- Carried signage to close roads
- Reduces Personal vehicles on scenes
- Less risk for major storm response
- Access for remote areas of district

Utility 3802



- 2011 Chevy Tahoe.
- Staff/Command Vehicle
- Battalion officer response rig
- Out of district training vehicle

Chief 38



- 2007 Ford Escape
- Off Island Commuter vehicle

ASSETS

Insured Values

➤ Vehicles	\$1,359,014
➤ Mobile Equipment	\$ 528,718
➤ Facilities	\$ 950,341
➤ <u>Contents</u>	<u>\$ 193,324</u>
➤ TOTAL	\$3,031,397

Account Values 12/31/2019

➤ Main	\$ 144,127
➤ Payroll	\$ 5,763
➤ Reserve	\$ 128,098
➤ Facilities	\$ 23,566
➤ <u>Apparatus</u>	<u>\$ 473,242</u>
➤ TOTAL	\$ 774,796

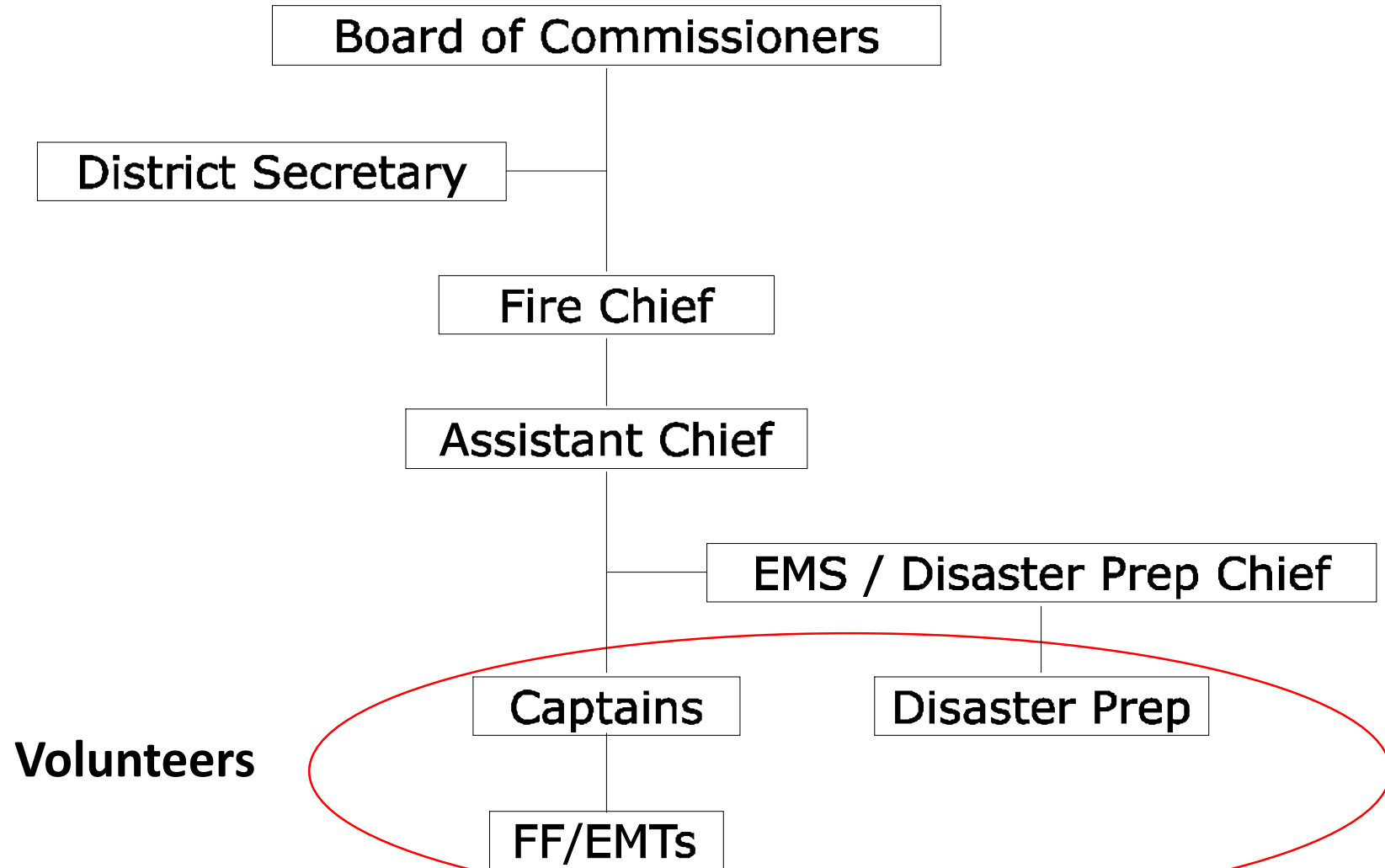
Debts:
\$0.00

Real Estate

➤ 3809 Legoe Bay	
Improvements	\$169,000
Land	\$ 80,000
➤ 3796 Legoe Bay	
Improvements	\$ 1,000
<u>Land</u>	<u>\$200,000</u>
TOTAL	\$450,000

TOTAL: \$4,256,193

Chain of Command



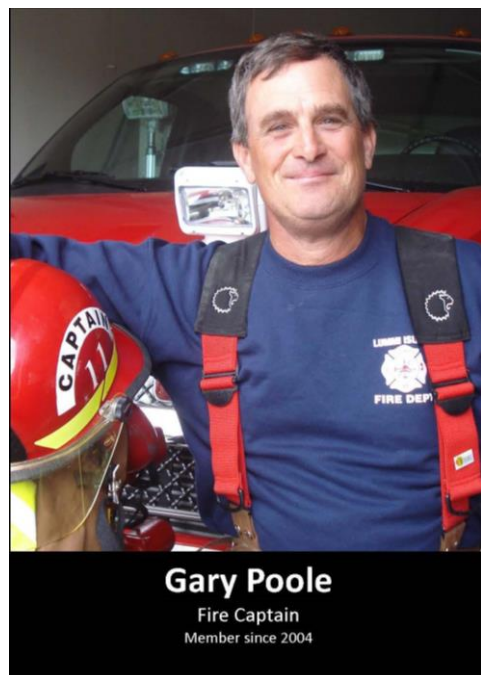
VOLUNTEER RESPONDERS

“There’s nothing stronger than the heart of a volunteer.” --Lt. Col. Jimmy Doolittle

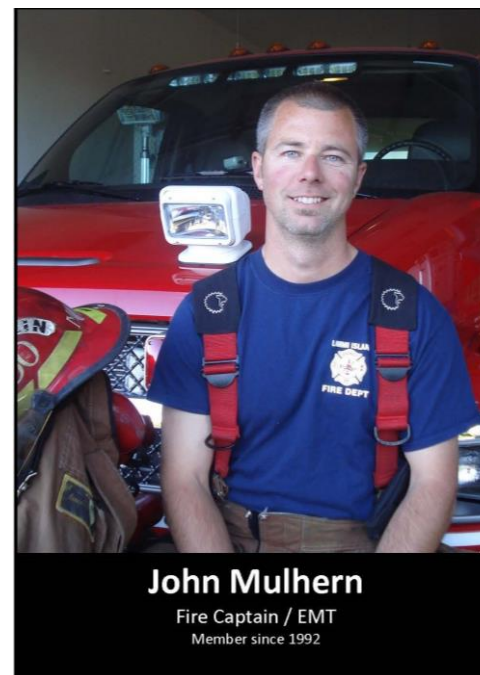
When available they drop what their doing, leave their work or families to respond to someone else's emergency.

They Make a Difference in the lives of others

- Assess The Situation: Sick/Not Sick? Big Fire Or Little Fire? More Resources? Access? Where Is The Ferry?
- Develop Action Plan: Offensive or Defensive? Minor Medical? CPR? Major Trauma? Responder Safety?
- Execute Action Plan: Strength And Weaknesses Individual? Are We Winning Or Loosing? Contingency Plan
- Get Back In Service: Patient Reports, Incident Reports, Decontamination, Pick Up Hoses, Clean And Sharpen Tools



Captains





Sam Bowman

Fire Fighter / EMT
Member since 2009



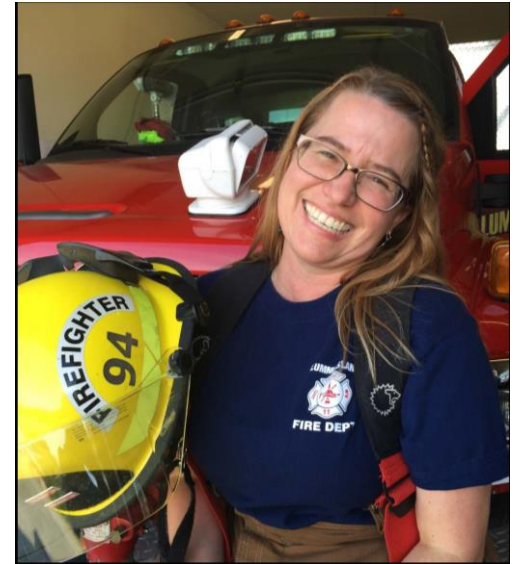
Gabel Bredy

Firefighter/EMT
Member since 2018



Doug Cash

Fire Fighter / EMT
Member since 2013



Alissa Daschbach

Firefighter/EMT
Member since 2016

Firefighter EMTs



Chris Immer

Firefighter/EMT
Member since 2008



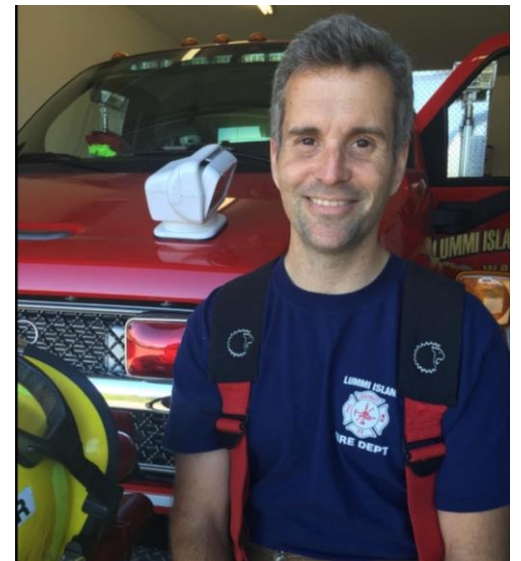
Dan Ohms

Firefighter/EMT
Member since 2013



Brittany Swaen

Firefighter/EMT
Member since 2014



Brian Thompson

Firefighter/EMT
Member since 2016

Disaster Prep Division



Leslie Demsey
Joan Moye

ALTERNATIVE MEANS OF
COMMUNICATION DURING
DISASTER



Scott Josiah
Joan Moye

Bill Lee
Tom Pawlak

Challenges Ahead!

Volunteer Responders

Facilities

Funding

VOLUNTEER RESPONDERS

Existing challenges

Increased call volume
Decreasing Volunteers
One responder pattern emerging (3 times in past 4 months)
14 on the roster (4-5 consistently responding)
Current membership is aging
Retirement community
Need 15 more!

Volunteering Challenges

Increased requirements
Available time
Both parents work
Have to do both Fire and EMS

Positive Aspects

Enjoyed 60 years of volunteers
Battalion 24/7/365 started in 2015

2019 Improvement Actions

Started Stipend Program 2019
12 Hour Shifts \$25 with 4 hrs at Station
Training \$5, Calls \$5

2020 Improvement Actions

Ensure 2 responders 24/7/365
Looking at adding higher stipend for FF/EMT
Weeknights and weekends
Significant Budget Impact
One-way road
Sustainability

Other Thoughts

Realistic for current members?
Off Island Responders?

FACILITIES CHALLENGES

Deficiencies

More apparatus (fire trucks) than bays
By-products of combustion (carcinogens) on gear
Vehicle exhaust in station (carcinogens)
One sink for food, dishes and medical decon.
One toilet not handicap accessible
No gross decon capability
Inadequate office, storage and supplies space
Current station land maxed out

Needs

More apparatus bays
Adequate office space
Adequate storage space
Gross Decon area
Design to limit carcinogen exposure
Kitchen area
Living area for off Island responders?

Cost Challenges

Prevailing Wage Laws
Commercial Code Laws
State Requirements
County Requirements
Island Factor
New station estimate \$5 – \$7 Million

Funding Challenges

Limited Tax Base
Voter Approval
Limited Grant Programs

Other Thoughts

Can it be phased in?
Low interest Loans?

Positive Aspects

Property purchased
Low call volume
Mitigating risks

FUNDING CHALLENGES

Existing Levies

District EMS Levy expires end of 2022 \$99,000 revenue with county reimbursement

District Replacement EMS Levy limited to approx. \$80,000 by Whatcom County EMS Levy

No reimbursement from County in future

Whatcom County EMS Levy expires 2023 > timing of propositions?

Equipment

SCBA's 13 years old 15 year life 12 @ \$ 7,000 \$84,000

Bunker Gear 14 years old 10 year life 15 sets @ \$ 3,000 \$45,000

Facilities

New Station \$5 – 7 Million

Can ask district voters for General Obligation Bond \$2.2 Million Max

Can ask district voters for Excess Levy M&O 4 year Capital 6 year

Positive Aspects

Healthy reserve



LUMMI
ISLAND
FIRE
CHIEF

THIS IS
GETTING
SCARY

VOLUNTEER
WELL

HANNAWAFALLSFIRE.ORG

PAUL COMBS
Fire Engineering ©2010