

# Statement of Purpose 2025-2026



*"In pursuit of Excellence in Care"*

**Registered Office:**  
**SMA House**  
**172 Birmingham Road**  
**West Bromwich**  
**West Midlands**  
**B70 6QG**

**Telephone:**  
**0121 582 4005**

**Email:**  
**[info@paramountfostercare.co.uk](mailto:info@paramountfostercare.co.uk)**

**Issue Date: December 2025**

## About us

Paramount Foster Care is an Independent Fostering Agency (IFA), registered under the Companies Act 2006 (Company Number: 10707917) and registered with Ofsted (URN: 2509967).

The agency is based at SMA House, 172 Birmingham Road, West Bromwich, West Midlands, B70 6QG.

## Statement of Purpose

This Statement of Purpose has been developed in accordance with relevant legislation and statutory guidance, including:

- The Children Act 1989
- The Care Standards Act 2000
- The Fostering Services (England) Regulations 2011 (as amended 2013)
- National Minimum Standards for Fostering Services (England) 2011
- Children Act Guidance and Regulations, Volume 4: Fostering Services (2011)
- Care Planning, Placement and Case Review and Fostering Services (Miscellaneous Amendments) Regulations 2013 and 2015
- The Equality Act 2010
- The Children (Leaving Care) Act 2000

A copy of this Statement of Purpose is available to all staff, children and young people in our care, their parents, placing authorities, prospective and approved foster carers, partner agencies, and any other individual or organisation wishing to understand our service. It is also available on our website.

The Statement of Purpose is reviewed annually and approved by the Registered Manager and Senior Management Team.

## Aims and Objectives

### **Aim:**

To positively transform the lives of children and young people placed with Paramount Foster Care by providing safe, stable, and nurturing family-based care that supports healing, development, and long-term positive outcomes.

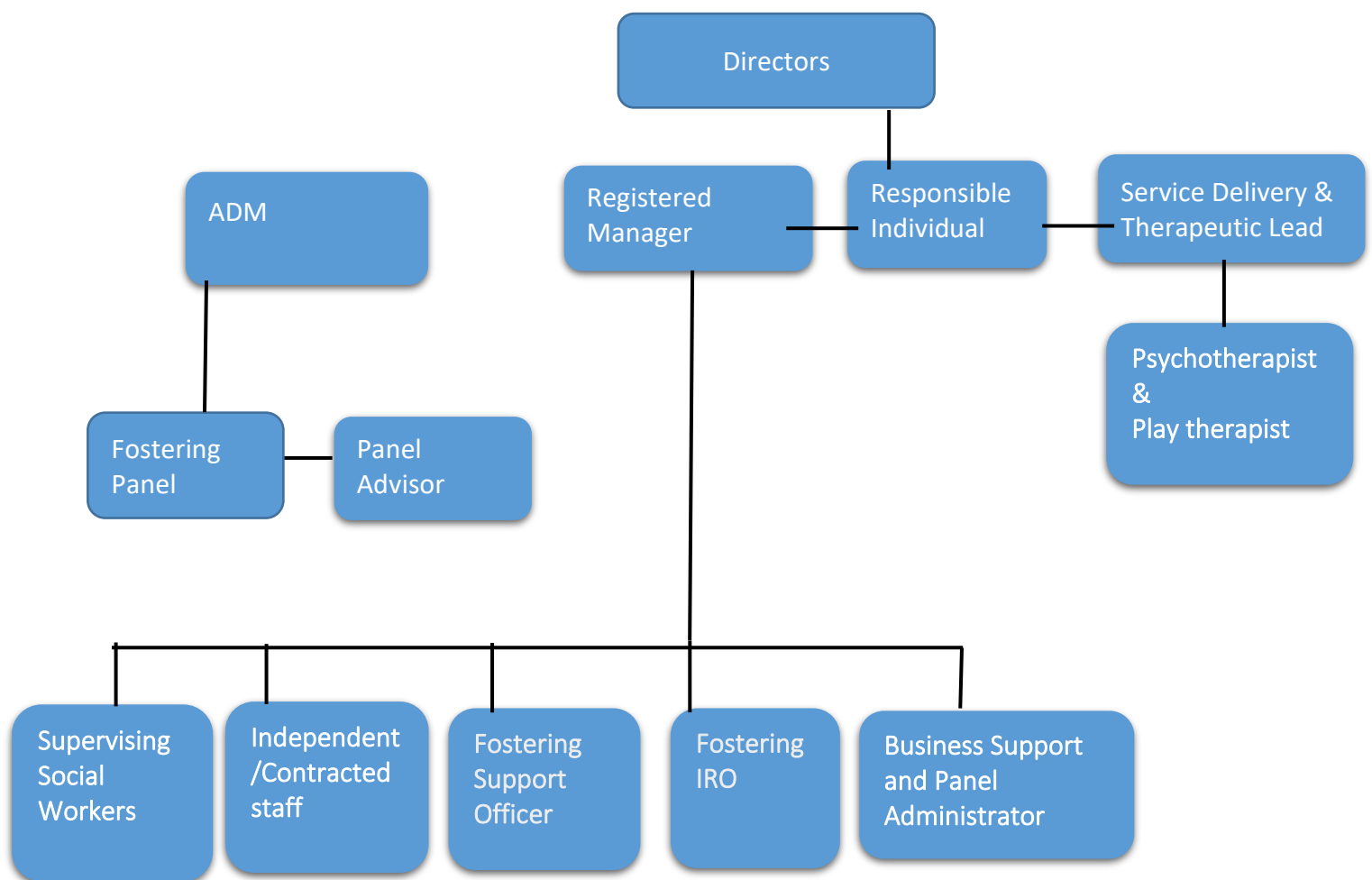
### **Objectives:**

Paramount Foster Care aims to:

- Provide stable, high-quality fostering placements for children in care
- Recruit, train, and retain foster carers from diverse backgrounds to meet a wide range of needs
- Support, supervise, and train foster carers to meet the individual needs of each child or young person
- Carefully match children and young people with suitably skilled and experienced foster carers
- Actively seek and respect the wishes and feelings of children and young people, promoting participation in their care planning

- Maximise outcomes across education, health, emotional wellbeing, and social development
- Promote sibling placements and meaningful family time where appropriate
- Promote equality, diversity, and inclusion, recognising each child's cultural, linguistic, religious, gender, sexual identity, and disability-related needs
- Consult with children, young people, and foster carers to inform service development
- Maintain a culture of continuous improvement informed by reflection, feedback, and research
- Celebrate and recognise the achievements of children, foster carers, and staff

## 4. Paramount Foster Care's Organisational Structure



## Equality and Diversity

Paramount Foster Care is committed to creating an inclusive culture where diversity is valued and respected. No child, young person, applicant, foster carer, or employee will be treated unfairly on the grounds of race, gender, age, disability, religion, belief, sexual orientation, or identity. Individual differences are recognised as strengths, and equality of opportunity is actively promoted.

## Therapeutic and Trauma-Informed

Paramount Foster Care delivers trauma-informed care underpinned by the PACE model (Playfulness, Acceptance, Curiosity, Empathy), developed by Dr Dan Hughes. This approach supports children who have experienced trauma to develop safe, trusting relationships and emotional regulation.

PACE informs:

- Foster carer training
- Supervision and reflective practice
- Behavioural understanding and responses

Carers receive training in:

- PACE principles and therapeutic parenting
- Attachment, Adverse Childhood Experiences (ACEs), and trauma
- Emotional regulation and resilience
- Trauma from the child's perspective

Supervising Social Workers reinforce this through reflective supervision and case discussions.

The agency also has access to:

- A psychotherapist
- A play therapist

These professionals provide direct therapeutic work with children and consultation for carers and staff where appropriate.

## Service Provision

Paramount Foster Care offers the following placements:

- Emergency placements (within 24 hours, 24/7, 365 days)
- Respite placements, including planned short breaks
- Short-term placements
- Long-term placements (until independence)
- Solo placements
- Staying Put arrangements (post-18)

Placements may be provided for:

- Individual children
- Sibling groups
- Children with additional needs
- Parent and child placements
- Unaccompanied children

## Recruitment and Approval of Foster Carers

Paramount Foster Care actively recruits foster carers who reflect the diversity of the communities served. Applications are welcomed regardless of gender, marital status, sexuality, race, disability, religion, culture, or employment status.

All assessments are undertaken in line with legislative and regulatory requirements. Applicants complete *Skills to Foster* training as part of the assessment process.

Following assessment, applicants attend Fostering Panel. Recommendations are considered by the Agency Decision Maker (ADM), with applicants notified in writing within seven days. Applicants have the right to appeal, including via the Independent Review Mechanism (IRM) if they are not satisfied with the outcome.,

## Review of Foster Carers

All foster carers undergo an annual review of approval in accordance with the Fostering Services Regulations 2011. Additional reviews may take place where significant changes or concerns arise.

Reviews are informed by feedback from placing authorities, professionals, carers, and children and young people. Recommendations are considered by the panel /ADM, with decisions confirmed in writing.

## Training for Foster Carers

- Mandatory Skills to Foster and TSDS completion
- Core training within the first year and refresher training every three years
- Bespoke and needs-led training
- Ongoing supervision by a Supervising Social Worker
- At least one unannounced visit annually
- 24-hour, 365-day out-of-hours support

Additional support includes:

- Support groups
- Carer mentors
- Champion carers
- Membership of The Fostering Network (including legal, counselling, and education support)

## Support for Foster Carers

Post-panel, successful applicants will join a community of foster families and will be supervised, supported, and advised on an ongoing basis by a Supervising Social Worker (SSW).

Foster families will be regularly contacted by telephone and visited by their SSW. In addition, each fostering household will receive at least one unannounced visit per year as part of safeguarding and quality assurance arrangements. These visits help to ensure the continued suitability of the fostering household and the wellbeing of children and young people living within it.

Paramount Foster Care is committed to actively promoting foster carer participation in these processes in order to strengthen service quality and continuous improvement

### **Support Out of Hours**

Paramount Foster Care provides personal, locally based out-of-hours support 24 hours a day, 365 days a year.

### **Support Group meetings**

All foster carers have access to regular support group meetings. These groups offer peer support, encourage shared learning, and provide a forum for carers to raise and discuss topics of interest and practice-related issues.

### **Carer Mentors**

Where appropriate, Paramount Foster Care will match experienced foster carers with newly approved or less experienced carers to provide additional guidance and peer support.

### **Carer Champions**

Experienced foster carers or those that have additional skills around social work, education, therapeutic work, will have the opportunity to become Champion Carers' and share their knowledge and expertise with other carers.

### **Membership to Fostering Network**

Paramount Foster Care provides membership of The Fostering Network to every fostering household registered with the agency. The Fostering Network offers independent advice and support to foster carers, including assistance in relation to allegations and complaints.

Additional benefits of membership include:

- Legal expenses insurance cover
- 24-hour legal advice
- Accountancy advice
- Counselling helpline
- Education Advisory Service

## **Quality Assurance (QA)**

Quality control measures and procedures are implemented to ensure that the service is supplied in accordance with the Fostering Service Regulations 2011, National Minimum Standards 2011 and the Children Act 1989. Examples of QA processes include: regular supervision, carrying out quality assurance audits of our processes/practice areas, obtaining wishes and feelings of children placed in our care, gaining feedback from stakeholders to improve our service provision etc.

The Registered Manager monitors in accordance with the requirements of Schedule 6 and the notification stipulations of Schedule 7. Safeguarding matters are a key priority, and the Registered Manager has lead responsibility

## **Services for Children and Young People**

Services include:

- Supervised family time

- Education and health support
- Therapeutic assessment and guidance
- Individual and group work
- Holiday activities
- Leaving care support
- 

Paramount Foster Care is committed to raising aspirations, advocating for children's rights, and ensuring their voices are heard.

## Complaints Management

Paramount Foster Care operates clear and accessible Complaints, Representations, and Whistleblowing procedures. Complaints are managed fairly, promptly, and respectfully, with independent oversight available where required.

## Essential Addresses and Contact Details

### Paramount Foster Care

Registered Manager  
Farzana Asghar  
SMA House Office  
172 Birmingham Road  
West Bromwich  
B70 6QG  
Tel: 0121 582 4005  
Email: [fasghar@paramountfostercare.co.uk](mailto:fasghar@paramountfostercare.co.uk)

### Paramount Foster Care

Responsible Individual  
Martin Rae  
SMA House Office  
172 Birmingham Road  
West Bromwich  
B70 6QG  
Tel: 0121 582 4005  
Email: [mrae@paramountfostercare.co.uk](mailto:mrae@paramountfostercare.co.uk)

### Ofsted

Piccadilly Gate  
Store Street  
Manchester  
M1 2WD  
Tel: 0300 123 1231  
Email: [enquiries@ofsted.gov.uk](mailto:enquiries@ofsted.gov.uk)

### The Office of the Children's Commissioner

Sanctuary Buildings  
20 Great Smith Street  
London  
SW1P 3BT  
Tel: 020 7783 8330  
Email: [info.request@childrenscommissioner.gsi.gov.uk](mailto:info.request@childrenscommissioner.gsi.gov.uk)

### Safeguarding Designated Officers

#### Registered Manager

Farzana Asghar

#### Responsible Individual

Martin Rae

Tel: 0121 582 4005

### For Complaints

Martin Rae  
SMA House Office  
172 Birmingham Road  
West Bromwich  
B70 6QG  
Tel: 0121 582 4005  
Email: [mrae@paramountfostercare.co.uk](mailto:mrae@paramountfostercare.co.uk)



"Where there  
is love there  
is life"

MAHATMA GANDHI

"Success  
is the  
ability  
to go  
from  
failure  
to  
success"



Paramount Foster Care

"In pursuit of Excellence in Care"