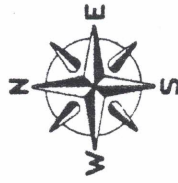
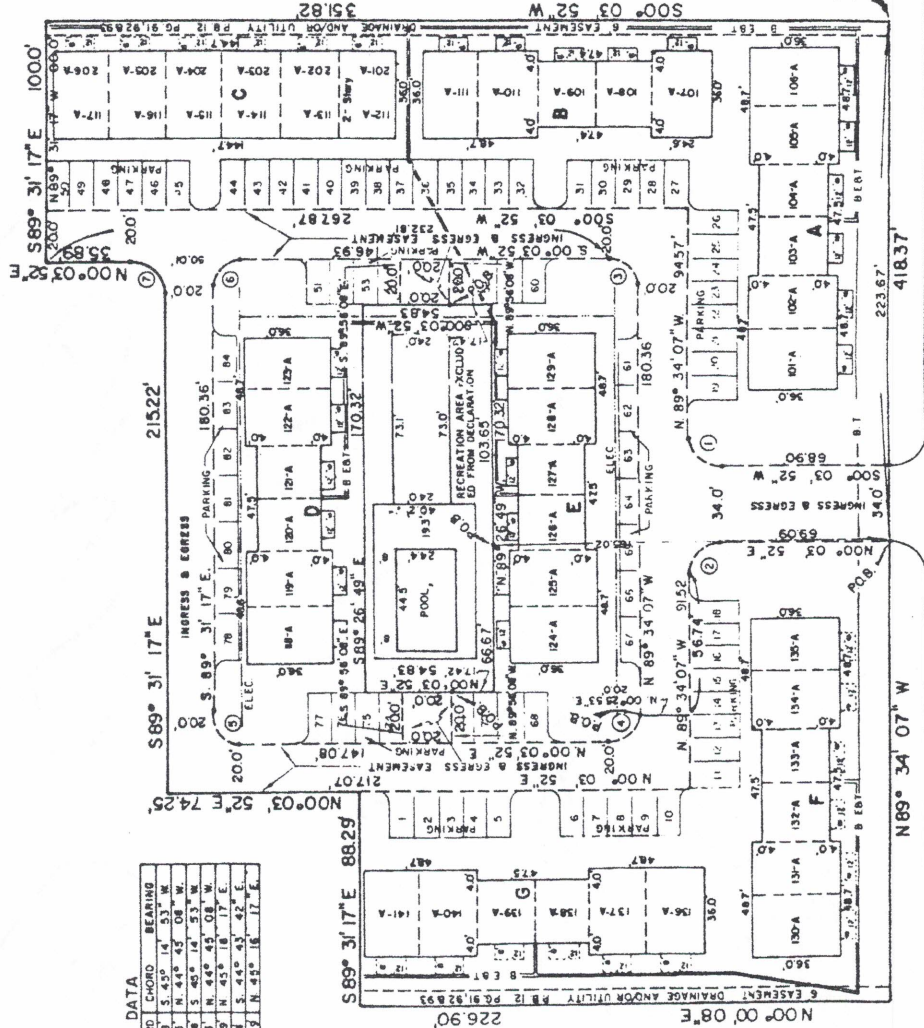


TOWNE SQUARE VILLAS "A" CONDOMINIUM



CURVE DATA			
NO.	RADIUS	ARC	CHORD
1	15.0	23.66°	21.28
2	15.0	23.66°	21.28
3	15.0	23.66°	21.28
4	15.0	23.66°	21.28
5	15.0	23.66°	21.28
6	15.0	23.66°	21.28
7	15.0	23.66°	21.28



EASEMENTS ARE SHOWN
THUS:
BEAR LOT EASEMENTS ARE
6 IN WIDTH AND ARE FOR
DRAINAGE AND/OR UTILITIES

Southwest corner Lot 1
BROWN B. WALKER
SUBD. 18036
P.B. 12, PG. 91, 92 & 93

NOTE:

LOCATION OF UNDERGROUND TELEPHONE LINES
OBTAINED FROM GENERAL TELEPHONE COMPANY
PLANS WITH TOWN SQUARE VILLAS CONDOMINIUM
MAIN ST. UNDER NO. 5321 E. 21-0003, DATED
OCTOBER 3, 1973
LOCATION OF UNDERGROUND POWER LINES OBTAINED
FROM FLORIDA POWER CORPORATION PLANS ENTITLED
"TOWN SQUARE VILLAS UNDERGROUND INSTALLATION"

DRAWING NO. 2-3247-C, DATED AUGUST 28,
1973 USE 6" X 12" CONCRETE PATIOS ADJOINING
BUILDINGS C.F.A.G. ARE NOT CONSTRUCTED AS
OF APRIL 5, 1974
OR BOOK PAGE FLORIDA POWER EASEMENT
BURIED ELECTRIC AND TELEPHONE LINES ARE

Prepared by
AMERICAN ENGINEERING INC.
U.S. Highway No. 19 S., P.O. Box 463
New Port Richey, Florida