

EXPANDING BLADE DRUM MIXER

AIR POWERED BUNG MOUNTED EXPANDING BLADE DRUM MIXER



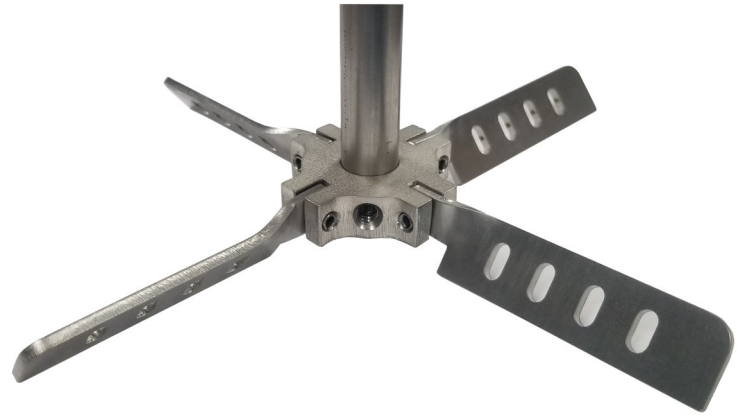
FEATURES:

- Mixing blades provide excellent shear and flow.
- Fast and easy screw in installation.
- 2" Stainless steel bung connection.
- Available in 1HP and 1.7HP
- Stainless steel construction on all wetted parts.
- 3 sets of expanding adjustable blades.
- Made in America

Specifications:

Expanding Blade Drum Mixer

Motor H.P. :	1.7 HP or 1 HP
Air Consumption:	22CFM/12CFM @ 400 RPM
Max inlet pressure:	100psi
Weight:	12.5 lbs. / 10 lbs.
Max Output speed:	1000 RPM (recommended)
Air inlet size:	1/4" NPT female
Bung Adapter:	2" NPT
Blade Size:	1-8" 2-6"
Shaft size:	5/8" x 30"
Construction:	Coupler 303SS, bung adapter 304SS, Wetted parts 304SS



Ordering information:

AGT-55XSHD-A/ AGT-55XS-A

Angled adapter for drums without center bung: 00240