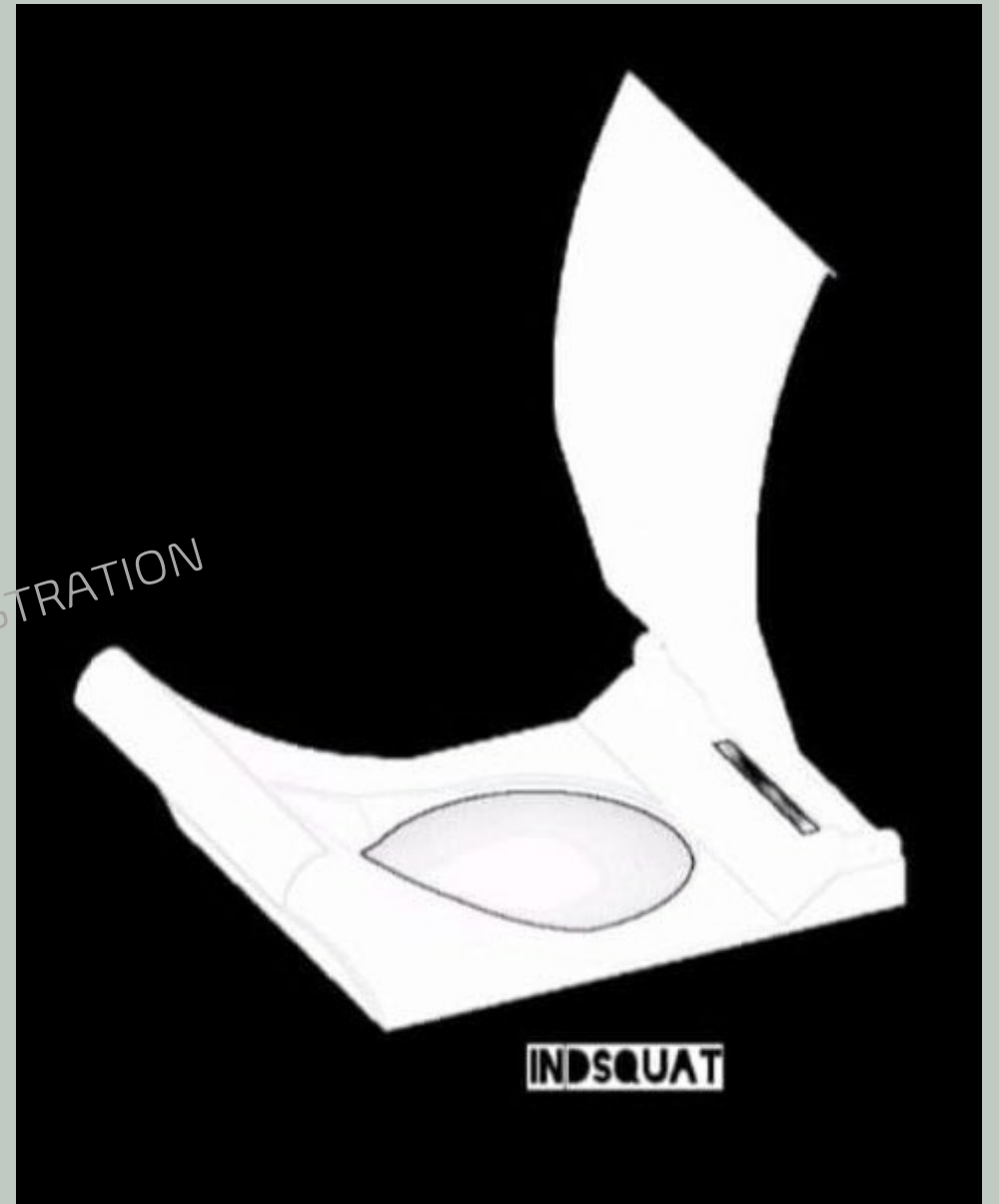

BALIBOYINA RAMANAIAH INNOVATIONS OPC PVT.LTD

PATENT PENDING - DESIGN REGISTRATION
PENDING

INDSQUAT™ - (INDIAN SQUATTING)
"INCLINED TOILET SEAT COCER"
FOR WESTERN TOILET COMMUNES
FOR FREE STOOL PASSAGE.



PROBLEM USING FLAT TOILET SEATS ON WESTERN TOILET COMMUNES

01 POSTURE DISCOMFORT - unnatural seating angle.

02 HEALTH ISSUES - increased constipation risk.

03 CULTURAL MISMATCH – discomfort for habitual squatters.

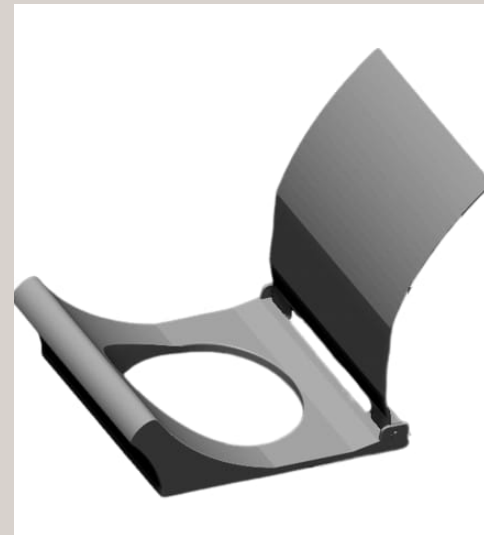
04 COLON DISEASES - due to incomplete colon opening.

— SOLUTION

INDSQUAT™ IS A FRONT INCLINED TOILET SEAT COVER USED ON WESTERN TOILET COMMODE FOR ACHIEVING NATURAL AND INDIAN SQUATTING POSTURE.

INCLINED SEAT MAKES POSTURE OF LEGS POSITION AS IN INDIAN TOILETS, SO COLON IS FULLY OPENED AND PASSAGE FOR STOOL IS EASY.

WHERE THE FLAT TOILET SEAT BLOCKS FULL OPENING OF COLON.



SEAT POSITION ON COMMODE

PATENT PENDING — DESIGN REGISTRATION PENDING





MARKET OPPORTUNITY

TARGET SEGMENTS: houses, hospitals, schools, college's, as today every one is installing western commodes.

Export potential: lot of export chances due to health-conscious markets.

-BUSINESS MODEL

ONLINE SALES
THROUGH E-
STORE



B2B BULK
SALES



DISTRIBUTOR
/DEALER
NETWORK
SALES



INSTITUTIONAL
TENDERS



OFFICES SALES



Employee opportunities



Employee opportunities

- MANUFACTURING STAFF – skilled and semi skilled workers
- R&D TEAM engineers and designer's
- Sales and marketing Executives
- Customer support representatives
- Warehouse and logistics staff
- Administration and accounts

Progress



- APPLIED TRADE MARK-

- APPLIED FOR
INDUSTRIAL
DESIGN

APPLIED FOR PATENT –

THIS DESIGN IS PATENT
PROTECTED

- INDSQUAT™

80-IAC Eligibility

Innovative patent and designed applied product eligible for 80-IAC.

NEWLY STARTED COMPANY
INCORPORATED IN MARCH 2025

EARLY-STAGE GROWTH – EXEMPTION HELPS REINVEST PROFITS INTO R&D.

ENGAGED IN INNOVATION OR
SCALABLE BUSINESS, NOT FORMED BY
SPLITTING/RECONSTRUCTING AN
EXISTING BUSINESS.

JOB CREATION POTENTIAL

BUSINESS FOCUSED ON INNOVATION