

BERBER

CUSHITIC

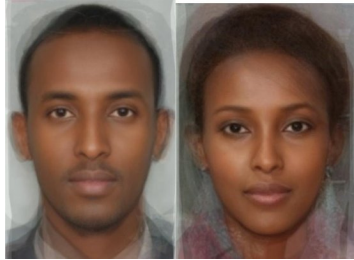
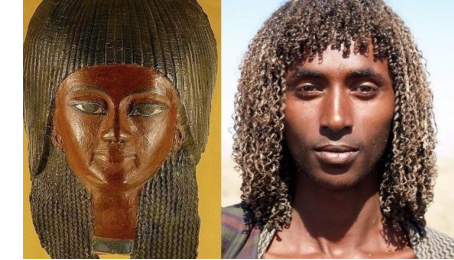
OMOTIC

CHADIC

SHEMITIC/SEMITIC

EGYPTIAN

PROTO
AFRO-ASIATIC



OROMO/SOMALI

ARBORE

HAUSA

BENEY YISRAEL
SHEMITIC AFRICAN
"BYSA"

HABESHA
"ETHIOPIA & ERITREA"

BEJA/SUDAN

6 PHYLLUMS OF AFRO-ASIATIC

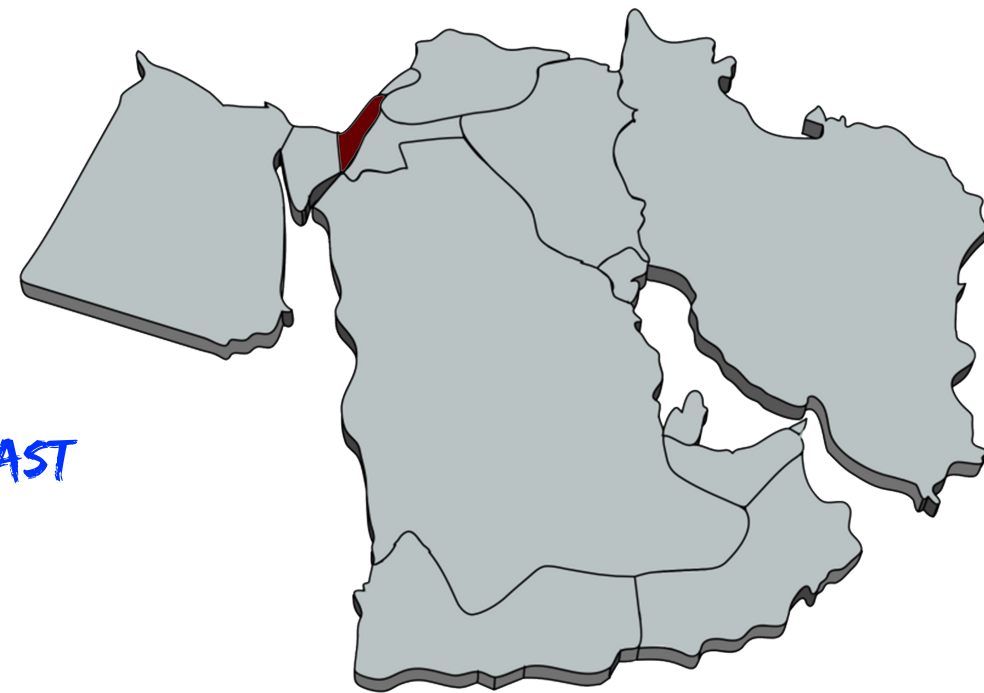
1. BERBER 2. CUSHITIC 3. OMOTIC 4. CHADIC 5. SHEMITIC/SEMITIC 6. EGYPTIAN



HAM
"AFRICA"
GEN 10:6-20



AFRO-ASIATIC
"HAM & SHEM"
AFRICA & MIDDLE-EAST



SHEM
"MIDDLE-EAST/
NORTH EAST AFRICA"
GEN 10:21-32

