



FABUNMI COMMUNITY VILLAS

A

PLAYGROUND

This space is allocated for pre-fabricated playground furniture suitable for children of a range of ages.

There will be a soft ground surface such as rubber or bark etc.

B

COMMUNAL OPEN SPACE

The open space will be mainly grass for sitting and playing, with a few ornamental plantings dotted amongst some retained existing plantings.

Crusher dust paths will connect areas.

There is an opportunity to incorporate sculptures etc for interest.

C

SEATING AREA

The central area of the main Communal Open Space provides a meeting point for congregating. It is surrounded by shade providing trees.

Pre-fabricated seating can be installed or this space could be surrounded by a low wall of seat height.

This area is to be surfaced the same as the paths (crusher dust etc) and could include a central focus such as a water feature etc.



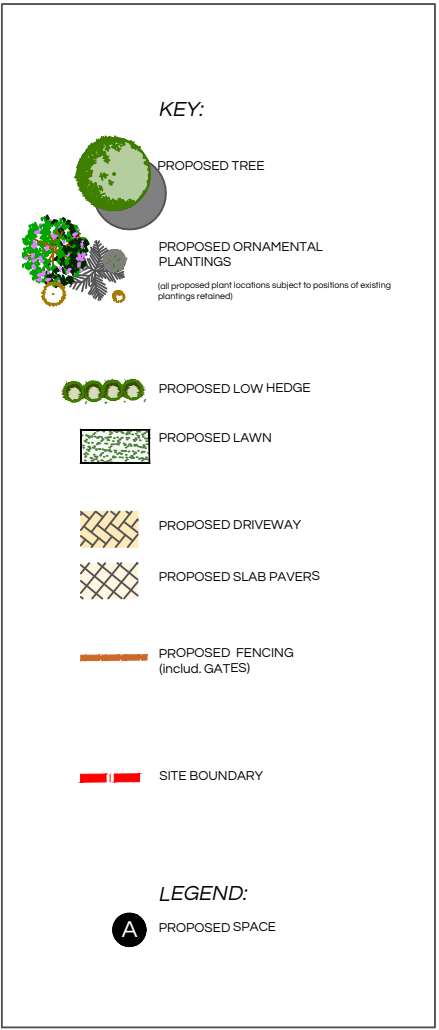
A



B

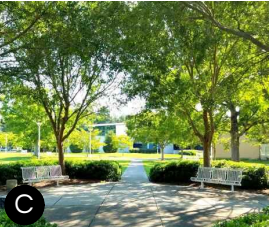


C



The copyright of this drawing is vested with Aaron Hinds. Copyright is reserved by us and the drawing is issued on the condition that it is not copied, reproduced, retained nor disclosed to any unauthorised person either wholly or in part without the consent of Aaron Hinds.

SUITABLE FOR DISCUSSION PURPOSES ONLY



drawn by	JWH	checked by	ah
title	Landscape Masterplan		
scale	NOT TO SCALE		
date	14 March 2022		
project	Fabunmi Community Villas Ibadan Nigeria		
drawing no.	1970_042_LM01		
revision			