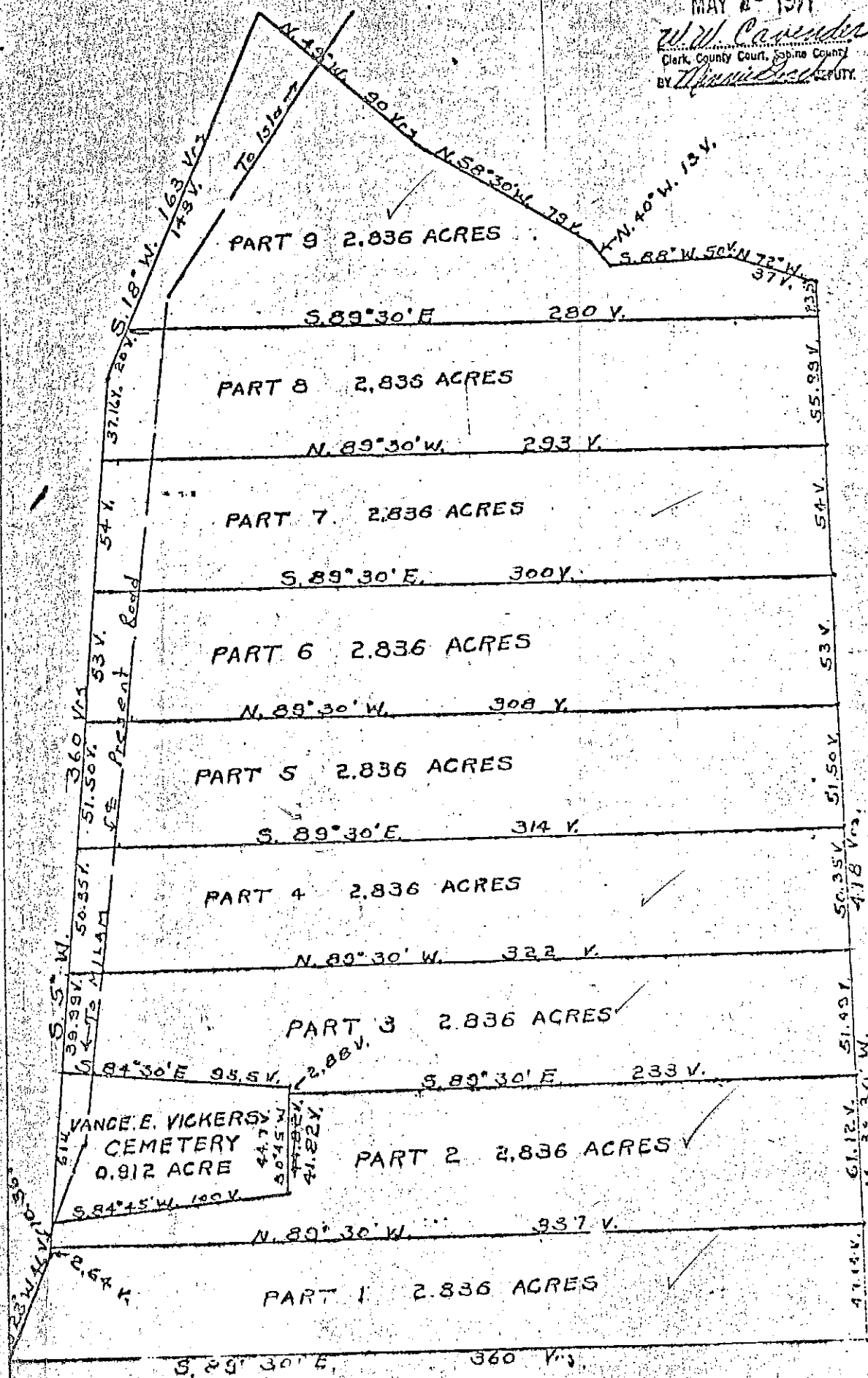


FILED FOR RECORD  
AT 9:15 O'CLOCK A.M.

MAY 2 - 1971

W.W. Cavender  
Clerk, County Court, Sabine County  
BY: *[Signature]* DEPUTY



A PLAT OF A 9 PART PARTITION SURVEY MADE FOR - SCALE: 1"=130'  
THE HEIRS OF VANCE E. VICKERS OUT OF THE JAMES MASON  
LEAGUE, ABST. NO. 190, IN SABINE COUNTY, TEXAS, SURVEYED APRIL 1971  
BY: *[Signature]*

FIELD NOTES FOR THE HEIRS OF VANCE E. VICKERS

BEING a 26.436 acre partition survey made for the Heirs of Vance E. Vickers out of a called 29.2 acre survey, and being 0.912 acres reserved for the Vance E. Vickers Cemetery, and 2.836 acres for each of the 9 heirs, being situated on the James Mason League, Abstract No. 160, in Sabine County, Texas, and each part being more fully described by metes and bounds as follows:

VANCE E. VICKERS CEMETERY

BEGINNING at an iron stake for corner, the NW corner of cemetery tract, same being the SW corner of Part No. 3, herein described, from which 5" Double Sweet Gum brs N. 12 E. 4.8 vrs. and a 4" Pine brs. S.  $66\frac{1}{2}$  W. 6.1 vrs;

THENCE S.  $84\frac{1}{2}$  E. at 95.5 vrs to an iron stake for corner in the east fence of said cemetery;

THENCE S.  $0^{\circ} 45'$  W. with the back fence of the cemetery, at 2.88 vrs. passed the most Southerly SW corner of Part No. 3, at 44.7 vrs to an iron stake for corner, at the SE fence corner of said cemetery, being the most Northerly SW corner of Part No. 2;

THENCE S.  $84\frac{3}{4}$  W. with the South fence of cemetery at 100 vrs to an iron stake in the Milam-Isla road, on the WBL of the 26.436 acre tract;

THENCE N. 5 E. with the WBL of the said 26.436 acre tract at 61 vrs the place of beginning, containing 0.912 acres of land.

PART NO. 1

BEGINNING at an iron stake for corner in the East edge of the roadway of the Milam-Isla road, from which an 8" Sweet Gum brs. N. 66 W. 9.8 vrs. and an 8" Pine brs. S.  $86\frac{1}{2}$  W. 9.5 vrs. being the SW corner of the 26.436 acre tract;

THENCE S.  $89\frac{1}{2}$  E. with the SBL of the 26.436 acre tract at 360 vrs to an iron stake in the fence corner, from which an 8" Sweet Gum brs N. 66 W. 3.4 vrs and a 5" Black Gum brs S. 69 W. 6.9 vrs;

THENCE N.  $3\frac{1}{2}$  W. with the EBL of the 26.436 acre tract at 47.14 vrs. to an iron stake for corner in the fence line, from which a 20" Sweet Gum brs. N. 88 W. 5.6 vrs and a 12" Pin Oak brs S.  $24\frac{1}{2}$  W. 7.3 vrs;

200 1

THENCE N.  $89\frac{1}{2}$  W. at 337 vrs an iron stake in the roadway of the Milam-Isa road on the WBL of the 26.436 acre tract;

THENCE S. 5 W. with the WBL of said 26.436 acre tract at 2.64 vrs. to an iron stake for corner in said roadway, from which a 5" Sweet Gum brs. N. 71 W. 8.2 vrs and a Light Pole brs. N. 48 E. 7.5 vrs;

THENCE S. 23 W. at 46.0 vrs to the place of beginning, containing 2.836 acres of land.

PART NO. 2

BEGINNING at an iron stake for corner in the roadway of the Milam-Isa road, being the NW corner of Part No. 1, herein described;

THENCE S.  $89\frac{1}{2}$  E. with the NBL of Part No. 1, at 337 vrs. to an iron stake for corner in a fence, being the NE corner of Part No. 1, from which a 20" Sweet Gum brs N. 88 W. 5.6 vrs and a 12" Pin Oak brs S.  $24\frac{1}{2}$  W. 7.3 vrs;

THENCE N.  $3\frac{1}{2}$  W. with the EBL of the 26.436 acre tract, at 61.12 vrs to an iron stake for corner, from which a 12" Hickory brs S. 19 W. 5.2 vrs and another 12" Hickory brs N. 35 W. 8.8 vrs;

THENCE N.  $89\frac{1}{2}$  W. at 233 vrs to an iron stake in the East fence of the cemetery;

THENCE S.  $0^{\circ} 45'$  W. with the East fence of said cemetery, at 41.82 vrs to the SE fence corner of said cemetery;

THENCE S.  $84\text{-}3/4$  W. with the South fence of the cemetery at 100 vrs. to an iron stake for corner in the roadway of the Milam-Isa road, from which a 12" Pine brs S. 64 W. 8.8 vrs and a 3" Pine brs S.  $89\frac{1}{2}$  W. 6.9 vrs;

THENCE S. 5 W. with the WBL of the 26.436 acre tract at 10.36 vrs to the place of beginning, containing 2.836 acres of land.

PART 3

BEGINNING at an iron stake for corner on the WBL of the 26.436 acre

210  
tract, same being the NW corner of the Cemetery tract, from which a 5" Double Sweet Gum brs. N. 12 E. 4.8 vrs and a 4" Pine brs S. 66½ W. 6.1 vrs;

THENCE S. 84½ E. with the NBL of said cemetery tract at 95.5 vrs to an iron stake for corner, the NE corner of said cemetery tract;

THENCE S. 0° 45' W. with the EBL fence of said cemetery at 2.88 vrs to an iron stake for corner in said fence, same being the most Northerly NW corner of Part No. 2, herein described;

THENCE S. 89½ E. with the NBL of Part No. 2, at 233 vrs to an iron stake for corner, same being the NE corner of Part No. 2, from which a 12" Hickory brs S. 19 W. 5.2 vrs and another 12" Hickory brs N. 35 W. 8.8 vrs;

THENCE N. 3½ W. with the EBL of the 26.436 acre tract at 51.49 vrs to an iron stake for corner, from which a 5" Red Oak brs S. 34½ E. 2.9 vrs and a 4" Pine brs S. 10 W. 2.3 vrs;

THENCE N. 89½ W. at 322 vrs to an iron stake for corner on the WBL of the 26.436 acre tract, from which a 6" Red Oak brs. N. 28½ E. 3.6 vrs and an 8" Red Oak brs S. 13 W. 8.4 vrs;

THENCE S. 5 W. with the WBL of the 26.436 acre tract at 39.99 vrs the place of beginning, containing 2.836 acres of land.

PART NO. 4

BEGINNING at an iron stake for corner on the WBL of the 26.436 acre tract, same being the NW corner of Part No. 3, from which a 6" Red Oak brs N. 28½ E. 3.6 vrs and an 8" Red Oak brs S. 13 W. 8.4 vrs;

THENCE S. 89½ E. with the NBL of Part No. 3, at 322 vrs. to an iron stake on the EBL of said 26.436 acre tract, same being the NE corner of Part No. 3, from which a 5" Red Oak brs S. 34½ E. 2.9 vrs and a 4" Pine brs S. 10 W. 2.3 vrs;

THENCE N. 3½ W. with the EBL of the said 26.436 acre tract at 50.35 vrs to an iron stake for corner, from which a 12" Red Oak brs N. 2 W. 7.5 vrs and a 5" Pine brs S. 80 W. 3.3 vrs;

211

THENCE N.  $89\frac{1}{2}$  W. at 314 vrs to an iron stake for corner on the WBL of the 26.436 acre tract, from which a 5" Pine brs S.  $1\frac{1}{2}$  E. 3.7 vrs and a 4" Pine brs S.  $22\frac{1}{2}$  W. 5.1 vrs;

THENCE S. 5 W. with the WBL of the 26.436 acre tract at 50.35 vrs to the place of beginning, containing 2.836 acres of land.

PART NO. 5

BEGINNING at an iron stake for corner on the WBL of the 26.436 acre tract, same being the NW corner of Part No. 4, from which a 5" Pine brs S.  $1\frac{1}{2}$  E. 3.7 vrs and a 4" Pine brs S.  $22\frac{1}{2}$  W. 5.1 vrs;

THENCE S.  $89\frac{1}{2}$  E. with the NBL of Part No. 4, at 314 vrs to an iron stake on the EBL of the 26.436 acre tract, same being the NE corner of Part No. 4, from which a 12" Red Oak brs. N. 2 W. 7.5 vrs and a 5" Pine brs. S. 80 W. 3.3 vrs;

THENCE N.  $3\frac{1}{2}$  W. with the EBL of the 26.436 acre tract at 51.50 vrs to an iron stake for corner, from which a 14" Hickory brs. N.  $2\frac{1}{2}$  E. 3.3 vrs and a 3" Maple brs. S. 34 W. 8.0 vrs;

THENCE N.  $89\frac{1}{2}$  W. at 308 vrs to an iron stake for corner on the WBL of the 26.436 acre tract, from which a 6" Pine brs. N.  $53\frac{1}{2}$  W. 4.4 vrs and an 8" Sweet Gum brs S.  $33\frac{1}{2}$  E. 4.7 vrs;

THENCE S. 5 W. with the WBL of the 26.436 acre tract at 51.50 vrs to the place of beginning, containing 2.836 acres of land.

PART NO. 6

BEGINNING at an iron stake for corner on the WBL of the 26.436 acre tract, same being the NW corner of Part No. 5, from which a 6" Pine brs N.  $53\frac{1}{2}$  W. 4.4 vrs and an 8" Sweet Gum brs S.  $33\frac{1}{2}$  E. 4.7 vrs;

THENCE S.  $89\frac{1}{2}$  E. with the NBL of Part No. 5, at 308 vrs to an iron stake for corner on the EBL of the 26.436 acre tract, same being the NE corner of Part No. 5, from which a 14" Hickory brs N.  $2\frac{1}{2}$  E. 3.3 vrs and a 3" Maple brs S. 34 W. 8.0 vrs;

THENCE N.  $3\frac{1}{2}$  W. with the EBL of the 26.436 acre tract at 53.00 vrs to an iron stake for corner, from which a 12" Red Oak brs. N.  $89\frac{1}{2}$  W. 5.7 vrs and a 12" Sweet Gum brs S. 5 W. 4.8 vrs;

THENCE N.  $89\frac{1}{2}$  W. at 300 vrs to an iron stake for corner on the WBL of the 26.436 acre tract, from which a 16" Black Cherry brs. N. 47 E. 5.8 vrs and a 12" Pine brs S. 72 E. 3.3 vrs;

THENCE S. 5 W. with the WBL of the 26.436 acre tract at 53.00 vrs to the place of beginning, containing 2.836 acres of land.

PART NO. 7

BEGINNING at an iron stake on the WBL of the 26.436 acre tract, same being the NW corner of Part No. 6, from which a 16" Black Cherry brs. N. 47 E. 5.8 vrs and a 12" Pine brs S. 72 E. 3.3 vrs;

THENCE S.  $89\frac{1}{2}$  E. with the NBL of Part No. 6, at 300 vrs to an iron stake for corner on the EBL of the 26.436 acre tract, same being the NE corner of Part No. 6, from which a 12" Red Oak brs N.  $89\frac{1}{2}$  W. 5.7 vrs and a 12" Sweet Gum brs S. 5 W. 4.8 vrs;

THENCE N.  $3\frac{1}{2}$  W. with the EBL of the 26.436 acre tract at 54.00 vrs to an iron stake for corner, from which a 14" Pine brs N. 32 W. 4.9 vrs and a 16" White Oak brs S. 19 W. 3.0 vrs;

THENCE N.  $89\frac{1}{2}$  W. at 293 vrs to an iron stake for corner on the WBL of the 26.436 acre tract, from which a 5" Pine brs N.  $7\frac{1}{2}$  W. 2.3 vrs and a 10" Pine brs N.  $84\frac{1}{2}$  W. 4.0 vrs;

THENCE S. 5 W with the WBL of the 26.436 acre tract at 54.00 vrs to the place of beginning, containing 2.836 acres of land;

PART NO. 8

BEGINNING at an iron stake on the WBL of the 26.436 acre tract, same being the NW corner of Part No. 7, from which a 5" Pine brs N.  $7\frac{1}{2}$  W. 2.3 vrs and a 10" Pine brs N.  $84\frac{1}{2}$  W. 4.0 vrs;

THENCE S.  $89\frac{1}{2}$  E. with the NBL of Part No. 7, at 293 vrs to an iron

stake for corner on the EBL of the 26.436 acre tract, same being the NE corner of Part No. 7, from which a 14" Pine brs. N. 32 W. 4.9 vrs and a 16" White Oak brs S. 19 W. 3.0 vrs;

THENCE N.  $3\frac{1}{2}$  W. with the EBL of the 26.436 acre tract at 55.89 vrs to an iron stake for corner, from which a 16" Pine brs S.  $71\frac{1}{2}$  E. 1.0 vr. and a 10" Red Oak brs S.  $34\frac{1}{2}$  W. 2.7 vrs;

THENCE N.  $89\frac{1}{2}$  W. at 280 vrs to an iron stake for corner on the WBL of the 26.436 acre tract, from which a 4" Sweet Gum brs S.  $22\frac{1}{2}$  E. 2.0 vrs and a 10" Pine brs N. 59 W. 0.8 vrs.;

THENCE S. 18 W. with the WBL of the 26.436 acre tract at 20 vrs to an iron stake for corner from which a 6" Sweet Gum brs S. 8 E. 6.5 vrs and an 8" Pine brs S. 48 E. 3.3 vrs;

THENCE S. 5 W. with the WBL of the 26.436 acre tract at 37.16 vrs to the place of beginning, containing 2.836 acres of land.

#### PART NO. 9

BEGINNING at an iron stake for corner on the WBL of the 26.436 acre tract same being the NW corner of Part No. 8, from which a 4" Sweet Gum brs S.  $22\frac{1}{2}$  E. 2.0 vrs and a 10" Pine brs. N. 59 W. 0.8 vrs.;

THENCE S.  $89\frac{1}{2}$  E. with the NBL of Part No. 8, at 280 vrs to an iron stake for corner on the EBL of the 26.436 acre tract, same being the NE corner of Part No. 8, from which a 16" Pine brs. S.  $71\frac{1}{2}$  E. 1.0 vr. and a 10" Red Oak brs. S.  $34\frac{1}{2}$  W. 2.7 vrs;

THENCE N.  $3\frac{1}{2}$  W. with the EBL of the 26.436 acre tract, at 23.51 vrs. to an iron stake for corner, being the NE corner of the 26.436 acre tract from which a 5" Ash brs S.  $61\frac{1}{2}$  E. 3.6 vrs and a 4" Sweet Gum brs S. 2 W. 3.7 vrs;

THENCE N. 72 W. at 37 vrs. to an iron stake for corner from which a 12" Hickory brs N. 45 W. 5.0 vrs and another 12" Hickory brs S. 12 W. 6.0 vrs;

THENCE S. 88 W. at 50 vrs to an iron stake for corner from which a 36" Pine Oak brs N. 3 W. 1.9 vrs and a 12" Pine brs S. 26 W. 5.5 vrs;

THENCE N. 40 W. at 13 vrs to iron stake for corner, from which an 8" Pine brs N. 45 W. 3.8 vrs and a 5" Pine brs S. 53 W. 5.8 vrs;

THENCE N. 58½ W. at 79 vrs an iron stake for corner from which a 10" Pine brs N. 35 W. 2.4 vrs and an 8" Pine brs S. 57 W. 4.3 vrs;

THENCE N. 49 W. at 90 vrs to an iron stake for corner, being the NW corner of the 26.436 acre tract, from which a 10" Pine brs. West 2.0 vrs and a 6" Pine brs N. 9½ W. 3.8 vrs;

THENCE S. 18 W. with the WBL of the 26.436 acre tract at 143 vrs to the place of beginning, containing 2.836 acres of land..

All witness trees Marked X. Magnetic Declination 8° 30' East

Surveyed April 1971

BY Fred Oliphint

I, W. W. Cavender, County Clerk of Sabine County, Texas, do hereby certify that the foregoing instrument was filed 5-1-71, 1971 at 8:15 o'clock A M. and duly recorded 5-28, 1971 at 1 o'clock P M.

W. W. Cavender Clerk By Minnie Groch Deputy.